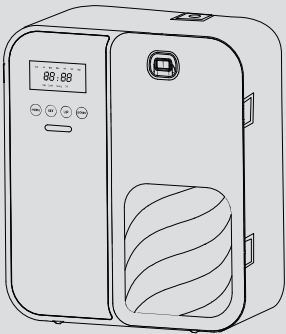


# Product Instructions

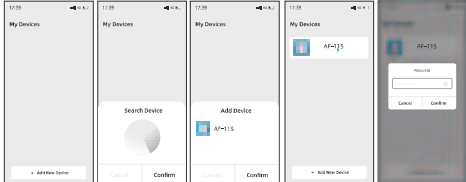


## Bluetooth Setting Steps:

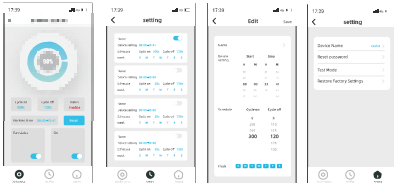
- 1.Machine connected to power supply.
- 2.Please turn on the mobile phone Bluetooth before setting machine.
- 3.Please scan the QR code below to download the App .



4.Enter the App ,click “+Add New Device ”and then search fragrance machine (Picture 1,Picture 2 and Picture 3 as below).The next step is to connect the machine and the default password is 9999 (Picture 4 and Picture 5 as below ).



5.Enter the operation interface (Picture 6),view the detailed fragrance expansion time (Picture 7),click a card then it will jump to setting (Picture 8).The first part refers to the fragrance expansion time within one day ;The middle part is the setting of fragrance spreading interval (seconds );At the bottom is the date to setting needs to spread incense every week .



6.(Picture 7)Setting can have multiple fragrance expansion periods (up to 4 periods ).The setting method is similar to the above ,and it can control the start time and end time of the each period .

7.Attention !

If the running time exceeds the same day ,the test needs to be divided into two periods of setting ,such as 18: 00-02: 00(setting needs to be the first period of 18: 00-23:59 and the second period of 00: 01-02: 00 ) . Setting can not be set as 00: 00,otherwise the machine will not working and setting session can not set duplicate working time ,otherwise it will not working.

# Product Instructions

## Product Introduction

This product is a timed automatic aroma spray machine.

## Operation Guide



## Operation Steps

### 1.Connect the equipment to an electricity supply

Plug the adapter into the diffuser, and then plug the adapter into an outlet.

### 2. Set the working time frame

This equipment allows setting up four operating time frames and provides different options for selecting the cycle of working days.

[MODE]: This button is for selecting the working day, setting the working time frame, and controlling the on-off cycle. Details are shown below. (Note: As for the set time, the setting is valid only when the end time is later than the start time.)

[SET]: This button is for entering the setting state, such as time setting and working day setting.

[UP]: This button is for moving forward the time and the working day, and increasing the length of time.

[DOWN]: This button is for moving back the time and the working day, and decreasing the length of time. (Note: Hold this button down for 5 seconds to carry out a factory reset.)

**Note: The operating time frames should not overlap.**

### 3 Set the system time:

Adjust the equipment time to make it consistent with the local time. The equipment applies the 24-hour clock system.

1st press of the [SET] button: the figure of the hour flashes. Press [UP] and [DOWN] buttons to adjust the hour.

2nd press of the [SET] button: to finish setting the hour of the time, and the figure of the minute flashes. Press[UP] and [DOWN] buttons to adjust the minute.

3rd press of the [SET] button: to finish setting the minute of the time, and the current working day flashes. Press [UP] and [DOWN] buttons to adjust the working day.

4th press of the [SET] button: to finish setting up the system time.

### 4. Set the operating time frame:

Hold the [MODE] button down for 3 seconds, the indicators of “Monday, Tuesday, Wednesday, Thursday, Friday, Saturday and Sunday” on the screen flash. Then press [UP]and [DOWN] buttons to switch the cycle of working days.

After the figure “1” appears on the screen, start setting up the first operating time frame.Press [SET] button, the screen displays “00:00” , the time indicator of the hour ( “00” )flashes, and the indicator of “Timing ON” is lit. Press [UP] and [DOWN] buttons to adjust the hour of the Start Time. Press [SET] button to finish setting up the Hour. Then the time indicator of the minute ( “00” ) flashes. Press [UP] and [DOWN] buttons to adjust the minute of the StartTime. Press [SET] button to finish setting up the Minute.

Then set up the End Time. The screen displays “00:00, the time indicator of the hour ( “00” ) flashes, and the indicator of “Timing OFF” is lit. Press [UP] and [DOWN] buttons to adjust the hour of the End Time. Press [SET] button to finish setting up the Hour. Then the time indicator of the minute ( “00” flashes. Press [UP] and [DOWN] buttons to adjust the minute of the End Time. After finishing setting by press [SET] and the [Cycle ON] appears on the LED screen. Then start setting up the duration of spraying ranging from 5 seconds to 200 seconds. Pressing [UP] or [DOWN] buttons can adjust 5 seconds each time. After finish setting up the duration of spraying, press [SET] and the [Cycle OFF] appears on the LED screen. Then start setting up the duration of interval ranging from 5 seconds to 900 seconds. Pressing [UP] or [DOWN] buttons can adjust 5 seconds each time.

Then enter the setting of the second operating time frame. The instructions are identical to those on setting up the first operating time frame. The instructions on the third and the fourth operating time frame setting are also the same. If you do not need to set up the second.,third, or fourth operating time frame, press [MODE] button to skip the setting process.

**Note 1: if you didn't set up the fragrance concentration on the 2nd**

**stage and 4th stage,it willworks with the first stage fragrance concentration**

**Note 2: The setting is valid only when the end time is later than the start time.**

### 5.Set the fragrance concentration in the space

After finishing setting each operating time frame, press [SET] repeatedly until [Cycle ON] appears on the LED screen. Then start setting up the duration of spraying ranging from 5 seconds to 200 seconds. Pressing [UP] or [DOWN] buttons can adjust 5 seconds each time.

After finish setting up the duration of spraying, press [SET] repeatedly until [Cycle OFF] appears on the LED screen. Then start setting up the duration of interval ranging from 5 seconds to 900 seconds. Pressing [UP] or [DOWN] buttons can adjust 5 seconds each time.

### 6.Caution

When the operation exceeds one day, two time periods should be set. For example, if it is to set the time period of 18:00-02:00, (it is needed to set the first time period: 00:01-02:00 first and then the second time period: 18:00-23:59). It is not allowed to set 00:00, or the machine will not operate. The time periods set should not be overlapped, or the machine will not operate, neither.

### 7.Maintenance and After-sales Service

#### I. After-sales service

1. Free technical troubleshooting and installation.
2. Free fragrance effect tracking scheme online.

#### II. Product warranty and precautions

1. The product warranty is 12 months (calculated from the date of sales).
2. Intentional damage or misuse is not covered by the warranty.
3. Use alcohol to wash the atomizing core after the service of 3-6 months.

### 8.Packing list

Name	Quantity
Fragrance equipment	1
Power cord	1
User's Manual	1
Hanging board of the machine	1

### FCC Warning

This device complies with Part 15 of the FCC Rules. Operation is subject to the following two conditions:

- (1) This device may not cause harmful interference, and
- (2) this device must accept any interference received, including interference that may cause undesired operation.

### NOTE

1: This equipment has been tested and found to comply with the limits for a Class B digital device, pursuant to part 15 of the FCC Rules. These limits are designed to provide reasonable protection against harmful interference in a residential installation. This equipment generates, uses and can radiate radio frequency energy and, if not installed and used in accordance with the instructions, may cause harmful interference to radio communications. However, there is no guarantee that interference will not occur in a particular installation. If this equipment does cause harmful interference to radio or television reception, which can be determined by turning the equipment off and on, the user is encouraged to try to correct the interference by one or more of the following measures:

- Reorient or relocate the receiving antenna.
- Increase the separation between the equipment and receiver.
- Connect the equipment into an outlet on a circuit different from that to which the receiver is connected.
- Consult the dealer or an experienced radio/TV technician for help.

**NOTE 2:** Any changes or modifications to this unit not expressly approved by the party responsible for compliance could void the user's authority to operate the equipment.

### RF Exposure Statement

To maintain compliance with FCC'S RF Exposure guidelines, This equipment should be installed and operated with minimum 20cm between the radiator and your body. This device and its antenna(s) must not be co-located or operation in conjunction with any other antenna or transmitter.