



Setup
Installation
Instalación

Logitech®
Mobile Freedom™ Headset
Mobile Freedom™ Headset

IMPORTANT SAFETY INFORMATION**CAUTION
ELECTRIC SHOCK HAZARD**

- Read these instructions.
- Keep these instructions.
- Heed all warnings.
- Follow all instructions.
- Caution: risk of electric shock. Do not open mains operated device.
- Do not use apparatus near water.
- Clean only with a dry cloth.
- Install in accordance with the manufacturer's instructions.
- Do not install near any heat sources such as radiators, heat registers, stoves, or other apparatus (including amplifiers) that produce heat.
- Do not defeat the safety purpose of the polarized plug. A polarized plug has two blades with one wider than the other. The wide blade is provided for your safety. If the provided plug does not fit into your outlet, consult an electrician for replacement of the obsolete outlet.
- Protect the power cord from being walked on or pinched particularly at plugs, convenience receptacles, and the point where they exit from the apparatus.
- Only use attachments/accessories specified by the manufacturer.
- Unplug this apparatus when unused for long periods of time or during lightning storms.
- Servicing is required when the apparatus has been damaged in any way, such as power-supply cord or plug is damaged, liquid has been spilled or objects have fallen into the apparatus, the apparatus has been exposed to rain or moisture, does not operate normally, or has been dropped.
- Refer all servicing to qualified service personnel.
- The appliance shall be disconnected from the mains by pulling the mains power plug. The socket - outlet shall be installed near the equipment and shall be easily accessible.
- Batteries built into device are NOT user replaceable. Discard used batteries according to the manufacturers instructions.

WARNING:
TO REDUCE THE RISK OF FIRE OR
ELECTRIC SHOCK, DO NOT EXPOSE THIS
APPARATUS TO RAIN OR MOISTURE.

Headset Overview

- A. WindStop™ microphone
- B. LED indicator light
- C. Volume down: lowers volume
- D. Volume up: raises volume
- E. Adjustable/reversible ear piece
- F. Multi-function button: Power on/off, answer/end calls

**Technical Specifications**

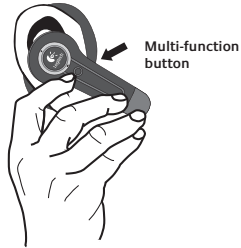
- Full duplex communication
- Rechargeable lithium-ion battery
- Adapter: 5.0 V.D.C.
- Range: up to 33 feet/10m
- Telephone voice quality sound
- Talk time: up to 7 hours
- Stand by time: up to 300 hours
- Weight: 23g
- Bluetooth profile v1.2 compliant
 - Adaptive-frequency hopping
 - Quick-connect time
 - Enhanced audio quality
- Maximum conducted output power = 2.5mW (variable adaptive power control)
- Operates in (2402MHz-2480MHz) Frequency Bands
- GFSK/FHSS Modulation

Pairing with a Bluetooth® Phone

You must pair your headset to a **Bluetooth® Mobile Phone**.

For more details, refer to your mobile phone user guide or contact the phone's manufacturer.

1. Turn on your phone. Make sure the battery is charged in both devices. Turn off the Headset.
2. Press and hold the Multi-function button until the headset indicator light flashes blue and red (about 10 seconds).
3. The Headset is now in Pairing mode. Release the button. The indicator light will continue flashing red and blue.
4. Follow the pairing instructions for your **Bluetooth®** phone. Typically, this is done by going to a 'setup' or 'connect' menu and then selecting the options to 'discover' **Bluetooth®** devices.
5. Your phone should find the '**Logitech HS02-Vxx**' headset. Confirm to pair.
6. Your phone should prompt you for a passkey or **PIN**. The PIN/passkey is: **0000**.
7. If pairing was successful, the Headset LED will flash blue.
8. If pairing fails turn the headset and phone off and repeat the process.
9. Red and blue flashing will return to stand-by mode (blue flashing LED) if not paired in 2 minutes.



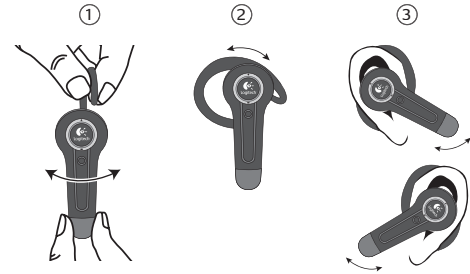
Headset Operation	Activation	LED Status	Sounds
Turning On	Press multi-function button for more than 3 seconds	5 BLUE flashes	brief low-to-high tone
Receiving incoming call	None - Automatic	3 repeating BLUE flashes	melody increases in volume
Answering call	Briefly press multi-function button	3 repeating BLUE flashes	single beep when answered
During call	None - Automatic	4 repeating BLUE flashes	no beep
Mic Mute-on during call	Press + volume button more than 2 seconds	4 repeating BLUE flashes	double-beep every 30 seconds
Ending mic mute	Press + or - volume button briefly	4 repeating BLUE flashes	single beep
Ending call	Press multi-function button briefly	3 repeating BLUE flashes	single beep
Pairing Option 1 Option 2	While off, press MFB for about 8 seconds until RED and BLUE flashes (times out after 2 minutes if no pairing)	Alternating RED and BLUE flashes Repeating BLUE flash when paired	single high-low tone beep No beep after pairing
	From Standby, press MFB for about 8 seconds until RED and BLUE flashes (times out after 2 minutes if no pairing)	Alternating RED and BLUE flashes Repeating BLUE flash when paired	single high-low tone beep No beep after pairing
Standby or connected	None	1 or 3 repeating BLUE flashes	None
Voice Dialing	In standby mode, press multifunction button, say name (stored in phone) after tone	4 repeating BLUE flashes	single beep
Low Battery (<30 minutes)	None - Automatic	RED flashes	last 30 minutes
Turning off	Press multi-function button for more than 3 seconds	5 RED flashes	high-to-low tone
Charging	Connection to power adapter charger and plugging into electrical outlet	Continuous ORANGE	

(Some functions are phone dependent)

Comfort & Fit

1. Flip the earpiece and slide the headset to fit either ear.
2. Rotate the earpiece and slide the headset over ear to your comfort.
3. Rotate the microphone boom so it is pointing toward the corner of your mouth.

Please see www.logitech.com for more information.



Using your Headset

Turning the headset on and off:

Push and hold the multi-function button for 4 seconds. A blue light will flash when on.

Answering/ending a call:

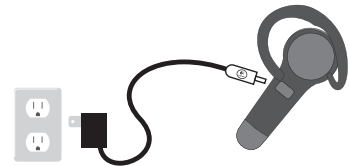
Press the multi-function button.

Muting a call:

Press and hold Volume up for 3 seconds. A repeating beep will indicate that the microphone is muted. Quick-Press of Volume up or down to discontinue mute.

Charging the Headset

1. Turn off the headset and connect the power adapter.
2. Plug the power adapter to an electrical outlet.
3. The LED will be orange when charging. If the LED is not orange, the connection is not sufficient.
4. When the LED turns off, your headset is fully charged. Charging can take up to 3 hours.



Frequently Asked Questions

- Q. Can I use my headset on a plane?**
A. No. At this time, the FAA prohibits the use of wireless/RF devices on airplanes.
- Q. How long should it take to charge my headset?**
A. It should take approximately 3 hours to charge your headset when the battery is completely discharged. The orange charger LED light will turn off when charged.
- Q. What should I do if the signal from the headset to the phone is lost?**
A. A lost signal between the headset and phone could be caused either by a low battery or if the phone is out of the headset's range. If this occurs, return the phone to within 30/10m feet of the headset. If the battery is low, re-charge the headset/and or phone.
- Q. When wearing the headset, where should I position the mini-boom?**
A. For best results, place the end of the mini-boom as close to your mouth as possible.
- Q. Is there a car adapter available?**
A. Yes. You can find it at www.logitech.com/adapter_offer.
- Q. Is there a power saving mode for my headset?**
A. Yes. Whenever a call is not active, the headset automatically goes into power-conserving standby mode.
- Q. Can I use my headset in windy conditions?**
A. Yes. WindStop technology ensures that your listener will hear you clearly in strong winds experienced when walking outside in a stiff breeze, with your car windows rolled down, air conditioning blowing in your headset, and similar conditions.

End-of-life Battery Disposal Instructions

This device uses a 4.0V, 140mAh Lithium-ion battery that should last the lifetime of the device. If you suspect your battery may be dead, try charging it. If the battery does not recharge, please contact Logitech® Customer Support for repair information. **The Logitech® Mobile Freedom™ Headset does not have a user-serviceable battery. Please do NOT attempt to change the battery yourself.** If the battery has died and you do not want Logitech® to replace your battery, you should follow the disposal instructions below. Consult local laws and regulations for proper battery disposal in your region. If there are no local regulations concerning battery disposal, please dispose of the device in a waste bin for electronic devices.



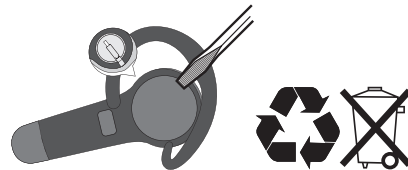
Caution The battery used in this device may present a risk of fire, explosion or chemical burn if mistreated.

Do not expose battery to heat above 100° C (212°F), or incinerate. Do not use or charge the batteries if they appear to be leaking, discolored, deformed, or in any way abnormal. Do not leave your batteries discharged or unused for extended periods of time. When batteries are misused, they may explode or leak, causing burns and personal injury. If your batteries leak, use normal precaution and discard the batteries immediately in accordance with these instructions.

Recycling Information for Lithium-ion Batteries

Battery Removal

1. Use flat screw driver to open headset as shown.
2. Disconnect battery connector from circuit board.
3. Do not place in trash. Dispose of battery according to local battery recycling laws.



Limited Warranty

Logitech® warrants that any hardware product accompanying this documentation shall be free from significant defects in material and workmanship for a period of one (1) year from the date of purchase. Logitech®'s limited warranty is nontransferable and is limited to the original purchaser. This warranty gives you specific legal rights, and you may also have other rights which vary under local laws.

Remedies. Logitech®'s entire liability and your exclusive remedy for any breach of warranty shall be, at Logitech®'s option, to: (a) repair or replace the hardware, provided that the hardware is returned to the point of purchase or such other place as Logitech® may direct, with a copy of the sales receipt, or (b) refund the price paid. Any replacement hardware will be warranted for the remainder of the original warranty period or thirty (30) days, whichever is longer. These remedies are void if failure of the hardware has resulted from accident, abuse, or misapplication, or any unauthorized repair, modification or disassembly. Upon request from Logitech®, you must prove the date of original purchase of the hardware by a dated bill of sale or dated itemized receipt.

DISCLAIMER OF WARRANTY. THE WARRANTIES EXPRESSLY SET FORTH IN THIS AGREEMENT REPLACE ALL OTHER WARRANTIES. LOGITECH® AND ITS SUPPLIERS EXPRESSLY DISCLAIM ALL OTHER WARRANTIES, INCLUDING, BUT NOT LIMITED TO, THE IMPLIED WARRANTIES OF MERCHANTABILITY AND FITNESS FOR A PARTICULAR PURPOSE AND NON-INFRINGEMENT OF THIRD-PARTY RIGHTS WITH RESPECT TO THE HARDWARE. NO LOGITECH® DEALER, AGENT, OR EMPLOYEE IS AUTHORIZED TO MAKE ANY MODIFICATION, EXTENSION, OR ADDITION TO THIS WARRANTY. Some jurisdictions do not allow limitations on how long an implied warranty lasts, so the above limitation may not apply to you.

LIMITATION OF LIABILITY. IN NO EVENT WILL LOGITECH® OR ITS SUPPLIERS BE LIABLE FOR ANY COSTS OF PROCUREMENT OF SUBSTITUTE PRODUCTS OR SERVICES, LOST PROFITS, LOSS OF INFORMATION OR DATA, OR ANY OTHER SPECIAL, INDIRECT, CONSEQUENTIAL, OR INCIDENTAL DAMAGES ARISING IN ANY WAY OUT OF THE SALE OF, USE OF, OR INABILITY TO USE ANY LOGITECH® PRODUCT OR SERVICE, EVEN IF LOGITECH® HAS BEEN ADVISED OF THE POSSIBILITY OF SUCH DAMAGES. IN NO CASE SHALL LOGITECH®'S AND ITS SUPPLIERS' TOTAL LIABILITY EXCEED THE ACTUAL MONEY PAID FOR THE LOGITECH® PRODUCT OR SERVICE GIVING RISE TO THE LIABILITY. Some jurisdictions do not allow the exclusion or limitation of incidental or consequential damages, so the above limitation or exclusion may not apply to you. The above limitations will not apply in case of personal injury where and to the extent that applicable law requires such liability.

FCC and IC Statements

This Class B digital apparatus complies with Canadian ICES-003 and part 15 of the FCC Rules. Operation is subject to the following two conditions: (1) This device may not cause harmful interference, and (2) this device must accept any interference received, including interference that may cause undesired operation. Note: The manufacturer is not responsible for ANY interference, for example RADIO OR TV interference, caused by unauthorized modifications to this equipment. Such modifications could void the user's authority to operate the equipment.

CONSIGNES DE SECURITE IMPORTANTES – POUR ALIMENTATION ELECTRIQUE UNIQUEMENT



ATTENTION: RISQUE D'ELECTROCUTION

- Veuillez lire ces instructions.
- Conservez ces instructions.
- Tenez compte de tous les avertissements.
- Suivez toutes les instructions à la lettre.
- Attention: risque d'électrocution. Cet appareil est alimenté sur secteur, ne l'ouvrez pas.
- N'utilisez pas l'appareil à proximité d'une source d'eau.
- Nettoyez-le uniquement à l'aide d'un chiffon sec.
- Procédez à l'installation en respectant les instructions du fabricant.
- N'installez pas l'appareil à proximité d'un radiateur, d'un poêle ou de toute autre source de chaleur (y compris les amplificateurs).
- Ne supprimez pas la fonction de sécurité de la fiche polarisée. Une fiche secteur polarisée possède deux broches, dont l'une est plus large que l'autre. La broche la plus large est fournie pour votre sécurité. Si la fiche fournie n'est pas adaptée à votre prise, consultez un électricien pour la remplacer.
- Évitez de marcher sur le cordon d'alimentation ou de le pincer, en particulier au niveau des prises, des socles de prises d'alimentation et du point de sortie de l'appareil.
- N'utilisez que les éléments annexes et les accessoires spécifiés par le fabricant.
- Débranchez cet appareil en cas d'orage ou si vous ne l'utilisez pas pendant des périodes prolongées.
- L'appareil doit être réparé dès qu'il a été endommagé (par exemple, au niveau du cordon d'alimentation ou de la prise), ou si un liquide a été renversé ou si des objets sont tombés dessus, s'il a été exposé à la pluie ou à l'humidité, s'il ne fonctionne pas normalement ou s'il est tombé.
- Les réparations doivent être effectuées par des techniciens qualifiés.
- Déconnectez-le de l'alimentation secteur en retirant la fiche de la prise secteur. La prise d'alimentation doit se trouver à proximité de l'équipement et doit être facilement accessible.
- Les piles intégrées au dispositif ne peuvent PAS être remplacées par l'utilisateur. Avant de vous débarrasser des piles usagées, référez-vous aux instructions du fabricant.

**AVERTISSEMENT:
POUR REDUIRE LE RISQUE D'INCENDIE OU
D'ELECTROCUTION, N'EXPOSEZ PAS CET
APPAREIL A LA PLUIE NI A L'HUMIDITE.**