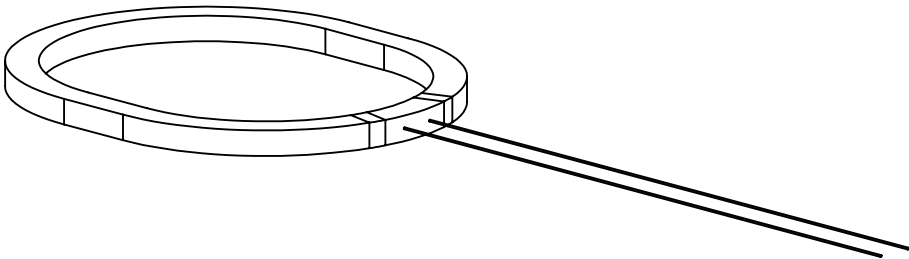
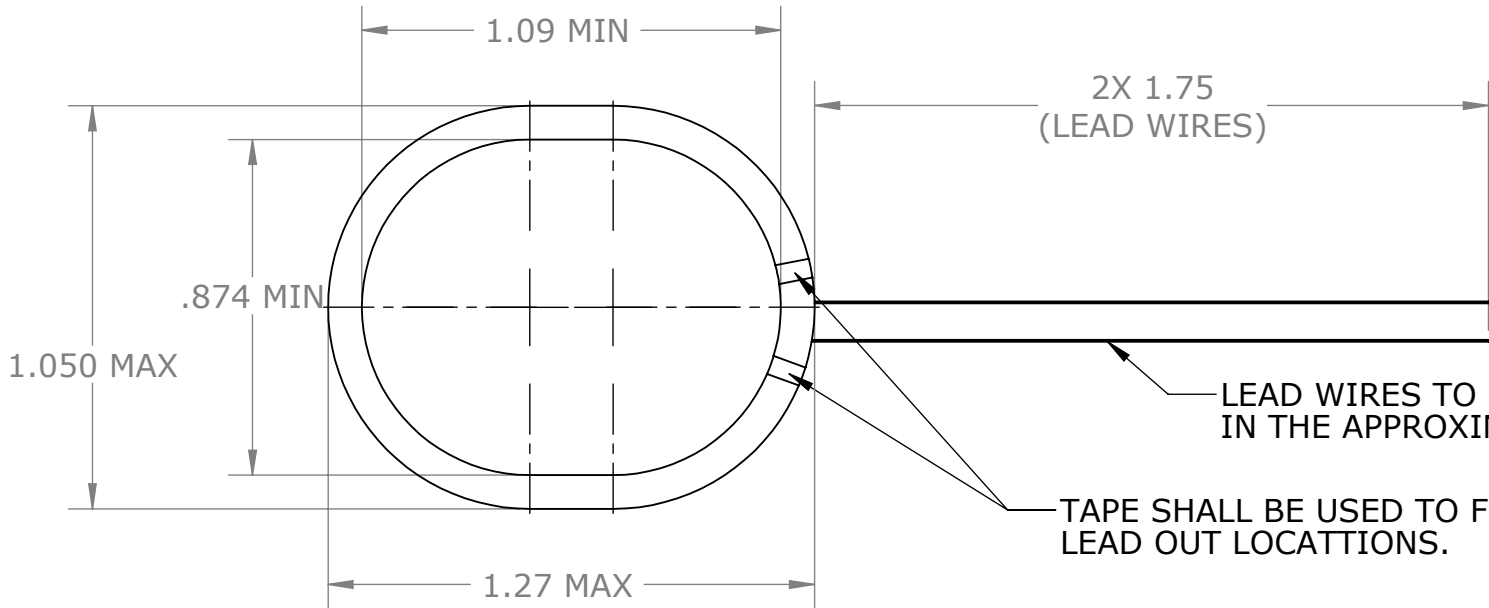


NOTES: (UNLESS OTHERWISE SPECIFIED)

1. DO NOT SCALE DRAWING.
2. COMPONENTS AND OR PARTS TO COMPLY WITH EU DIRECTIVE 2011/65/EU (RoHS). A STATEMENT OF COMPLIANCE MUST BE INCLUDED WITH EACH SHIPMENT.
3. MATERIAL AND PROCESS CERTIFICATE IS REQUIRED WITH ALL DELIVERIES.
4. MATERIAL: COPPER WIRE, AWG #38 BOND #1, ELEKTRISOLA OR EQUIV.
5. INDUCTANCE: 846uH +/- 2% @ 125 KHz OPEN-AIR.
6. ALL DIMENSION ARE FINISHED DIMENSIONS.
7. SUGGESTED SOURCE: CET TECHNOLOGY - PN: CT-7543-1

4



REVISIONS					
ZONE	REV.	CR#	DESCRIPTION	DATE	REV BY
	A	229-15	RELEASED FOR PRODUCTION.	09/17/2015	FF
	3	17-252	ADDED VIEW CONFIGURATION TO 3D MODEL.	08/25/2017	FF
	4	17-368	UPDATED NOTE 7 WITH CT-7543-1	1/23/2018	FF

NOTICE TO PERSONS RECEIVING THIS DRAWING AND/OR TECHNICAL INFORMATION
Hanchett Entry Systems, Inc. claims propriety rights to the material disclosed hereon. This drawing and/or technical information is issued in confidence for engineering information only and may not be reproduced or used to manufacture anything shown or referred to hereon without direct written permission from Hanchett Entry Systems, Inc. to the user. This drawing and/or technical information is the property of Hanchett Entry Systems, Inc. and is loaned for mutual assistance to be returned when its purpose has been served.

UNLESS OTHERWISE SPECIFIED TOLERANCES
X.X ± .03
X.XX ± .01
X.XXX ± .005
ANGLES ± 0°30'
FRACTIONS ± 1/64
SURFACE FINISH 63

ASSA ABLOY
Hanchett Entry Systems, Inc.
Phoenix, AZ

DRAWING COMPLIES WITH
ASME Y14.5 - 2009

INCH
MM

THIRD ANGLE
PROJECTION

MATERIAL
Material <not specified>

HEAT TREATMENT
N/A

SURFACE/FINISH
SEE NOTES.

MASS
0.16 lb

VOLUME
.02 in³

SURFACE AREA
1.14 in²

COIL: ANTENNA KS200 LF

DATE CREATED
10/30/2014

DRAWN BY
frfigu

DESIGNED BY
frfigu

DOCUMENT ID
D000520264-000

SCALE
2:1

SIZE
B

DRAWING NUMBER (ALT ID)
3080008.002

REV
4