



**Smart Designer  
Camera & Light**



2-Way  
Speaker



Wi-Fi®



Motion  
Detection



Secure  
App



Remote  
Viewing



340°  
View



Color  
Night Vision

**FHD**

Full HD  
3MP



Mobile  
Alert



Supports  
microSD Card

For instructional videos and FAQ's please visit  
**[icustomerservice.com](http://icustomerservice.com) to learn more.**

Distributed by Trend Makers, LLC • Fort Walton Beach, FL 32547

©2024 Trend Makers, LLC

Made in China

All Rights Reserved.



**WARNING:** Cancer and Reproductive Harm - [www.P65Warnings.ca.gov](http://www.P65Warnings.ca.gov)

By purchasing this product, you accept Trend Makers' terms and conditions including arbitration agreement.  
See enclosed for arbitration agreement. See [trendmakersinc.com/arbitration-agreement](http://trendmakersinc.com/arbitration-agreement) for details.



i\_SDCL\_IB\_ENG\_V1\_240820



**Smart Designer  
Camera & Light**

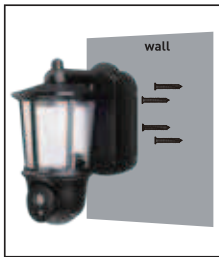


**Trend Makers®**

## 3 Simple Steps to Set-Up and Protect



Download the  
HOMEi  
App



Install Smart Designer  
Camera & Light  
onto an outside wall.



Connect your  
Smart Designer  
Camera & Light to  
the App by  
scanning QR code

**NOTE:** To ensure proper use of your Smart Designer Camera & Light please follow the instructions detailed in this set-up guide.

This device contains licence-exempt transmitter(s)/receiver(s) that comply with Innovation, Science and Economic Development Canada's licence-exempt RSS(s). Operation is subject to the following two conditions:

This device may not cause interference.

This device must accept any interference, including interference that may cause undesired operation of the device.

To maintain compliance with RF exposure guidelines, this equipment should be installed and operated with a minimum distance of 20cm between the radiator and your body.

L'émetteur/récepteur exempt de licence contenu dans le présent appareil est conforme aux CNR d'Innovation, sciences et Développement économique Canada applicables aux appareils radio exempts de licence. L'exploitation est autorisée aux deux conditions suivantes:

- 1.L' appareil ne doit pas produire de brouillage;
- 2.L' appareil doit accepter tout brouillage radioélectrique subi, même si le brouillage est susceptible d'en compromettre le fonctionnement

Pour maintenir la conformité aux directives d'exposition aux radiofréquences, cet équipement doit être installé et utilisé avec une distance minimale de 20 cm entre le radiateur et votre corps.

# Setting Up Your Smart Designer Camera & Light

This device complies with Part 15 of the FCC Rules. Operation is subject to the following two conditions:

- (1) this device may not cause harmful interference, and
- (2) this device must accept any interference received, including interference that may cause undesired operation.

## FCC RF Radiation Exposure Statement Caution:

To maintain compliance with the FCC's RF exposure guidelines, place the product at least 20cm from nearby persons.

FCC ID: 2A88H-0033052281

HVIN:IS B07

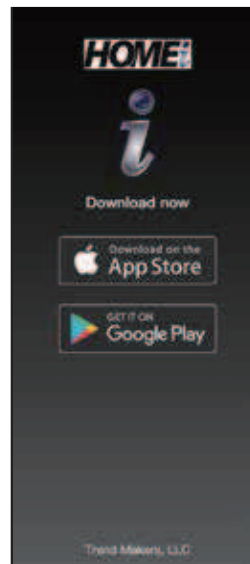
IC:32423- IS B07

# Setting Up Your Smart Designer Camera & Light

## Step 1: Download the HOMEi App

1. Download the **HOMEi** app in the Apple® App Store, Google® Play Store, or use your phone camera to scan the QR code below to open the app store of your mobile phone.

Apple® App Store or  
Google® Play Store



Scan Code



# Setting Up Your



Smart Designer  
Camera & Light

## Step 1: Download the HOMEi App

1. In order for your Smart Designer Camera & Light to work properly, select **Allow** if you see the prompt: **HOMEi** would like to find and connect to devices on your local network.
2. Create your account and select **Continue**.
3. Follow the App prompts to set up your password and register your account. Then **Log In** to your **HOMEi** app.

**Passwords must contain numbers and letters, be no less than six digits, and cannot contain special characters.**

### **FORGOT PASSWORD:**

In the App click on "Forgot Password" and follow the account retrieval process. You will receive an email with a temporary code. Enter the temporary code. You will receive a second email with your password.



# Setting Up Your



Smart Designer  
Camera & Light

**Warning:** Changes or modifications to this unit not expressly approved by the party responsible for compliance could void the user's authority to operate the equipment.

**NOTE:** This equipment has been tested and found to comply with the limits for a Class B digital device, pursuant to Part 15 of the FCC Rules. These limits are designed to provide reasonable protection against harmful interference in a residential installation. This equipment generates, uses and can radiate radio frequency energy and, if not installed and used in accordance with the instructions, may cause harmful interference to radio communications.

However, there is no guarantee that interference will not occur in a particular installation. If this equipment does cause harmful interference to radio or television reception, which can be determined by turning the equipment off and on, the user is encouraged to try to correct the interference by one or more of the following measures:

- Reorient or relocate the receiving antenna.
- Increase the separation between the equipment and receiver.
- Connect the equipment into an outlet on a circuit different from that to which the receiver is connected.
- Consult the dealer or a qualified radio/TV technician for help.

To maintain compliance with FCC's RF Exposure guidelines, This equipment should be installed and operated with minimum distance between 20cm the radiator your body. Use only the supplied antenna.

# Setting Up Your

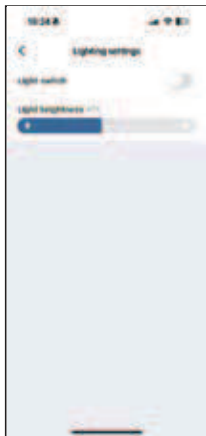
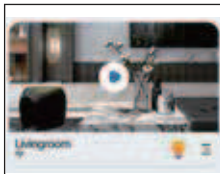


Smart Designer  
Camera & Light

## How to Use your Smart Designer Camera & Light

To get started, open your **HOMEi** app and follow these easy steps:

1. Choose the device you want to control.
2. Tap the Light icon, one-button switch control light ON or OFF.
3. Select your camera Setting :
  - Click Lighting settings
  - Adjust Light brightness
  - 0%-100%



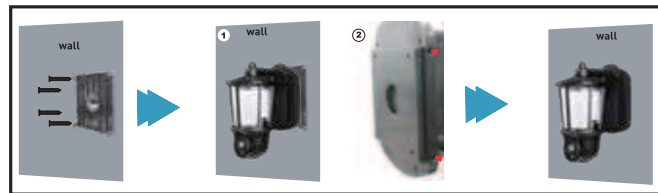
# Setting Up Your



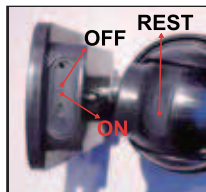
Smart Designer  
Camera & Light

## Step 2: Mounting the Smart Designer Camera & Light

1. Use the provided screws to secure the mounting plate to a wall.
2. Then use the provided screws to secure your Smart Designer Camera & Light to the mounting plate.



3. Turn on the camera switch, your Smart Designer Camera & Light indicator light will flash.
4. Press the reset button on the bottom of your Smart Designer Camera & Light for about 5 seconds, wait for the PTZ self-test to complete, until you hear a "Reset successful, restarting!" sound.



**This unit is equipped with lithium batteries. Make sure that the camera is charged prior to installation**

## Step 3: Connect Your Smart Designer Camera & Light to the App

1. Press the  sign in the App



2. You will discover the ID number of the device, select "add to"



3. Select or enter your location's Wi-Fi® name, enter the password. If your Wi-Fi® is 5GHz, please set it to be 2.4GHz by tapping Change Wi-Fi®, then press Next Step in the App.



## Step 3: Connect Your Smart Designer Camera & Light to the App

4. The App will countdown until your Smart Designer Camera & Light and mobile device are reconnected to your Wi-Fi® network.



5. Enter the name of your Smart Designer Camera & Light, then click Done.



6. Now, you are ready to start using your Smart Designer Camera & Light!

