



Wireless Display Receiver

Quick Start Guide rev 1.0

Introduction

EZCast supports multiple wireless display standards, including EZCast, Miracast, DLNA and EZAir (compatible with iOS and macOS). Ongoing firmware upgrades are provided to support latest operating systems. Please read this guide to install and setup your EZCast. Happy Casting!

Support@EZCast.com

Learn More

Visit <https://www.EZCast.com> for more information.

Visit <https://www.YouTube.com/EZCast> for video tutorials.

Software Installation

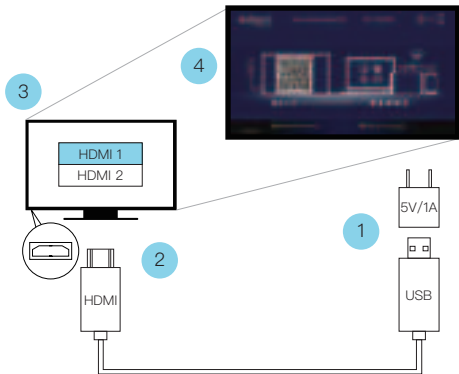
Visit <https://www.EZCast.com/app> to download platform-specific applications and User Manual.

Scan the QRCode below to download EZCast mobile App.



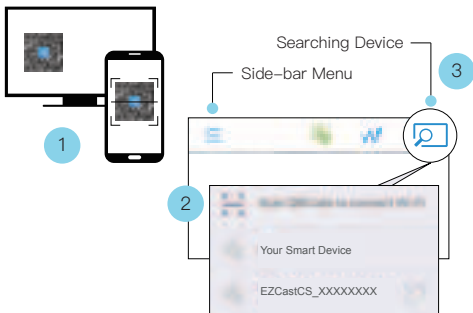
Hardware Installation

- 1 **EZCast to power:** Turn on your TV and power up EZCast dongle by connecting the USB cable to an adapter (5V1A).
- 2 **EZCast to TV:** Plug EZCast dongle into a HDMI port on TV.
- 3 **Select source:** Set your TV's source/input selection to HDMI port connected to the EZCast dongle.
- 4 **Connect successfully:** Your TV screen shall display the instructions once EZCast is connected successfully. Please follow the instructions to complete setup.



Setup for smart device (Android/ iOS)

- 1 **Download EZCast app:** Scan QRCode on TV screen or search "EZCast" on Google Play/App Store.
- 2 **Connect WiFi:**
 - (1) Launch EZCast App and click **Searching Device** icon.
 - (2) Click "Scan QRCode to connect WiFi" to scan QRcode on TV screen.
 - (3) **Setting** shall pop out (or click **Side-bar Menu** to find). Click **Internet** and connect to your WiFi.
- 3 **Connect to EZCast:** **Searching Device** shall pop out when WiFi is connected. Find and click EZCastCS_xxxxxxx in the list below).



Screen Mirroring for Android

EZCast/ Mirror

Click the Mirror icon on the top bar.

Note: For EZCast/ Mirror, it only captures the screen without sound due to limitations in Android. To mirror the sound to your TV, please use EZMirror instead.

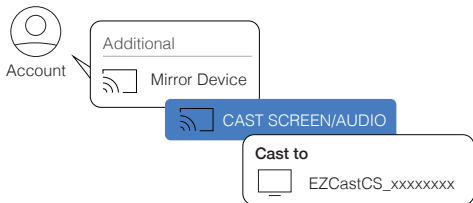


Google Home

You may download Google Home App from Google Play. Launch the Google Home App, login with Google account. Then you may mirror to EZCast using Google Home.

Note: Make sure that EZCast and your Android device are both connected to same WiFi.

Steps: Account > Mirror Device > Cast Screen/Audio > Cast to > EZCastCS_xxxxxxx



Miracast

Mirror to EZCast using Miracast if your Android devices support Smart View on Samsung, Multi-screen on Huawei, or etc.

Samsung



Smart View

Huawei



Multi-screen

OPPO



Multi-screen
Interaction

Vivo



Smart Screening



Cast to

EZCastCS_xxxxxxxx



Screen Mirroring for iOS

Airplay

Screen mirroring may be done by Airplay on iOS smart devices. Swipe to show Airplay, click Screen Mirroring, and choose EZCastCS_xxxxxxxx.



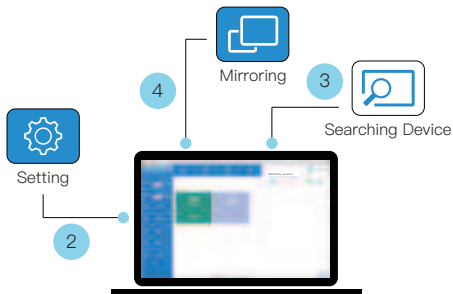
Screen Mirroring

EZCastCS_xxxxxxxx



Setup for laptop (Windows/ MacOS)

- 1 **Download and install EZCast application:** Download at <https://www.ezcast.com/app>
- 2 **Connect to WiFi:**
(1) Click WiFi list from your laptop and connect to your EZCastCS_xxxxxxx by entering PSK password on TV screen.
(2) Launch EZCast application, with your EZCast device connected automatically which shows at upper right, **Setting** shall pop out (or find from side bar). Click **Internet** and connect to your WiFi.
- 3 **Connect to EZCast:** Click **Searching Device** to find and select your EZCastCS_xxxxxxx.
- 4 **Screen Mirroring:** Click **Mirroring** in EZCast application.



EZCast Settings

Internet:

Connect EZCast to WiFi.

Device Name:

Change device name of EZCast.

WIFI Password:

Change password of EZCast hotspot.

Display:

Set display mode to game and video.

Resolution:

Change output resolution.

Language:

Change language preference.

EZAir Mode (only for iOS):

Switch mirroring mode of EZCast between "mirror only" and "mirror + streaming" for iOS devices.

Auto play:

Automatically start video streaming from Internet once your EZCast dongle is connected to WiFi.

Upgrade:

Connect EZCast to home router in advance, and the latest version of EZCast firmware shall be downloaded. Please do NOT turn off the Wifi and the power of EZCast during firmware upgrading.

Reset to default:

Reset EZCast to default settings.

Features of EZCast

EZChannel:

Create an EZCast account and bind with EZCast to have best experiences.

(1) Discover and personalize your video channels.

(2) Search videos across different sites.

(3) Auto-play: Automatically start video streaming from Internet once your EZCast dongle is connected to WiFi.

Video/ Photo/ Music: Stream and playback local media files from Android/ iOS/ Windows/ MacOs to EZCast dongle wirelessly.

Live Camera: Capture videos from local camera to EZCast dongle.

DLNA: Stream multimedia files via DLNA protocol.

Cloud Storage: Access data from Cloud server (Dropbox, Google drive, or etc.).

Voice Control:

Pair EZCastCS with any Google Home device/ Amazon Echo Dot, and stream entertainment just by asking orally.

(1) Google Home/ Assistant:

e.g. Say, "Hey Google, ask EZCast to play holiday video." to control.

User Manual please refers to website as below.

<https://support.google.com/assistant/answer/7394306?co=GENIE.Platform%3DAndroid&hl=en>

(2) Amazon Echo Dot:

e.g. Say, "Alexa, play holiday video." to control. More info see:

<https://www.amazon.com/gp/help/customer/display.html?no-deld=201994280>

©2019 Actions Microelectronics Co., Ltd. All right reserved.
EZCast are trademarks of Actions Microelectronic Co., Ltd.,
registered in US, Europe, and other countries. Other product and
company names mentioned herein may be trademarks other
respective companies.

FCC STATEMENT

1. This device complies with Part 15 of the FCC Rules. Operation is subject to the following two conditions:

(1) This device may not cause harmful interference.

(2) This device must accept any interference received, including interference that may cause undesired operation.

2. Changes or modifications not expressly approved by the party responsible for compliance could void the user's authority to operate the equipment.

NOTE: This equipment has been tested and found to comply with the limits for a Class B digital device, pursuant to Part 15 of the FCC Rules. These limits are designed to provide reasonable protection against harmful interference in a residential installation.

This equipment generates uses and can radiate radio frequency energy and, if not installed and used in accordance with the instructions, may cause harmful interference to radio communications. However, there is no guarantee that interference will not occur in a particular installation. If this equipment does cause harmful interference to radio or television reception, which can be determined by turning the equipment off and on, the user is encouraged to try to correct the interference by one or more of the following measures:

Reorient or relocate the receiving antenna.

Increase the separation between the equipment and receiver.

Connect the equipment into an outlet on a circuit different from that to which the receiver is connected.

Consult the dealer or an experienced radio/TV technician for help.

FCC Radiation Exposure Statement

This equipment complies with FCC radiation exposure limits set forth for an uncontrolled environment. This equipment should be installed and operated with minimum distance 5mm between the radiator & your body