

True Wireless Sport Earbuds

Model: OES-2110

Brand: ORAIMO TECHNOLOGY LIMITED

Declares that this True Wireless Sport Earbuds is in compliance with the essential requirements and other relevant provisions of Directive 2014/53/EU

Please read this Guide carefully
before using the product

Package Contents



Product Overview



For more information, please visit:

www.oraimo.com

@oraimo_accessories

@oraimoclub

@oraimomate

Product Overview



Basic Product Specifications

Earbuds

Range: 10m / 33ft

Music play time: Up to 5 hours on single charge, case provides additional 15 hrs

Battery capacity: 30mAh (each earbud)

Charging time: Approx. 2.5 hours

Supported call call results:

Charging Case

Battery capacity: 300mAh

Charging time: Approx. 2 hours

If the charging case is fully charged, it can recharge the earbuds about 5 times.

Using Your Earbuds



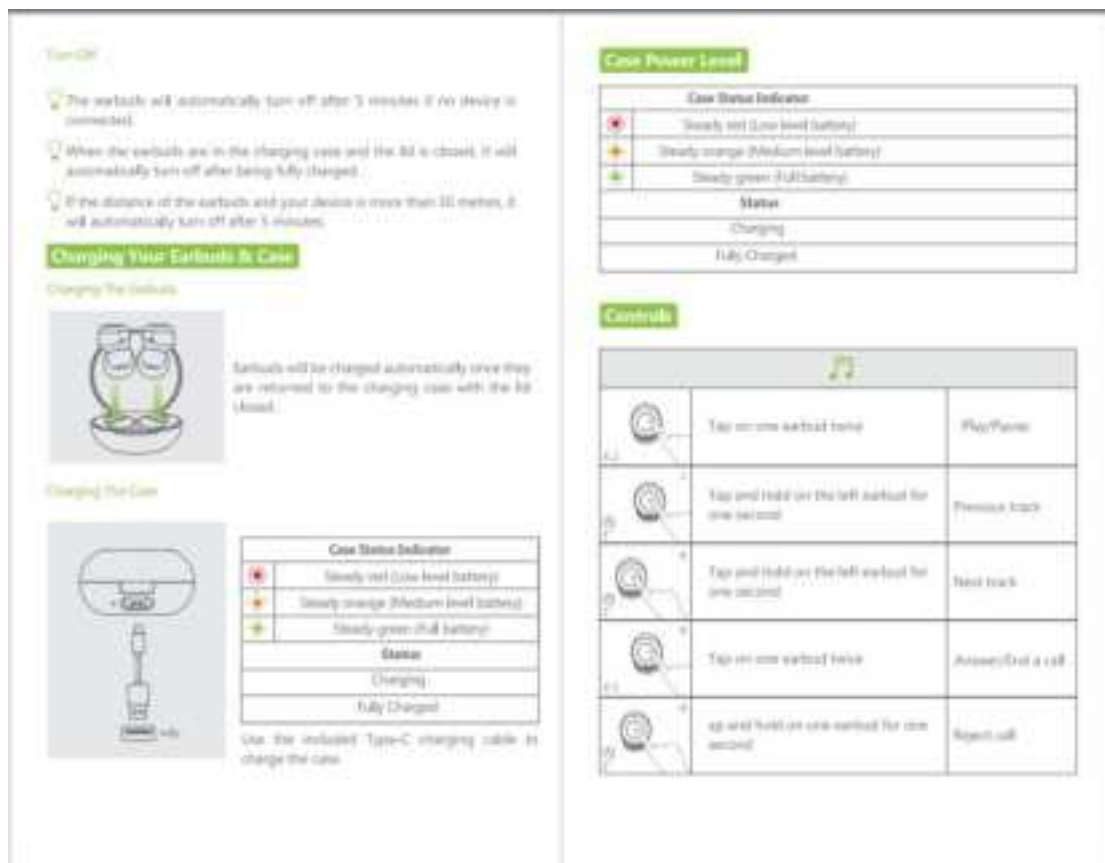
Turn On & Pairing



* Earbuds will turn on and enter pairing mode automatically when open the charging case.

Earbud Status Indicator	Status
	Flashing while in both earbuds: Bluetooth Pairing
	Light off: Connected to a device

- Make sure the distance of the earbuds and your device is less than 1 meter / 3.3 feet at the first time of connection.
- When turned on, the earbuds will automatically connect to the last connected device if available. If not, the earbuds will enter pairing mode.
- Under any abnormal condition, return the earbuds to the charging case and then take out again.



FCC Caution:

Any Changes or modifications not expressly approved by the party responsible for compliance could void the user's authority to operate the equipment.

This device complies with part 15 of the FCC Rules. Operation is subject to the following two conditions: (1) This device may not cause harmful interference, and (2) this device must accept any interference received, including interference that may cause undesired operation.

IMPORTANT NOTE:

Note: This equipment has been tested and found to comply with the limits for a Class B digital device, pursuant to part 15 of the FCC Rules. These limits are designed to provide reasonable protection against harmful interference in a residential installation. This equipment generates, uses and can radiate radio frequency energy and, if not installed and used in accordance with the instructions, may cause harmful interference to radio communications. However, there is no guarantee that interference will not occur in a particular installation. If this equipment does cause harmful interference to radio or television reception, which can be determined by turning the equipment off and on, the user is encouraged to try to correct the interference by one or more of the following measures:

—Reorient or relocate the receiving antenna.

—Increase the separation between the equipment and receiver.

—Connect the equipment into an outlet on a circuit different from that to which the receiver is connected.

—Consult the dealer or an experienced radio/TV technician for help.

FCC Radiation Exposure Statement:

This equipment complies with FCC radiation exposure limits set forth for an uncontrolled environment.

