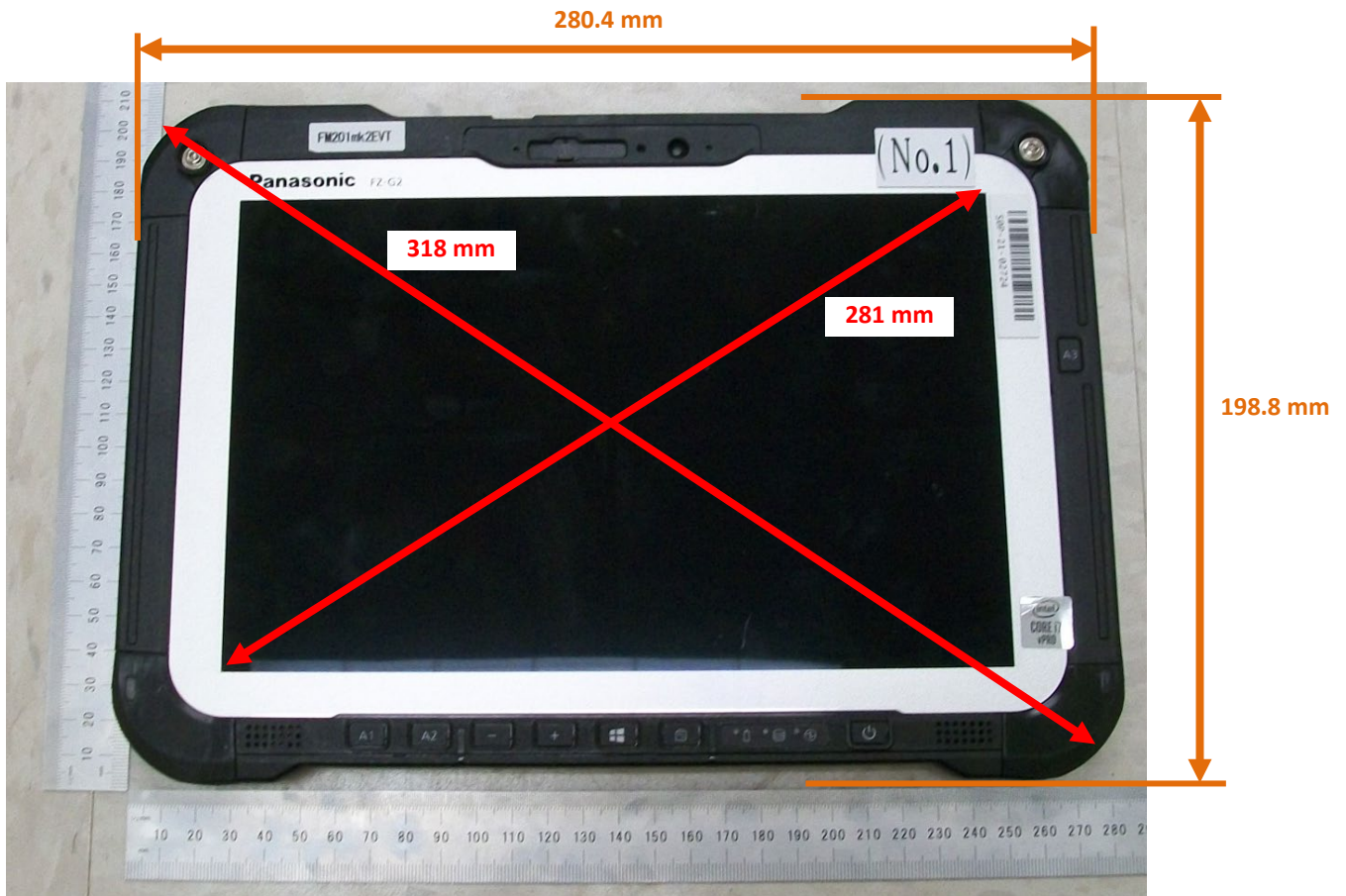


## DUT and SAR Set-up Photos

Photograph 1: Overall Dimensions - Tablet



Photograph 2: Overall Dimensions - Laptop



Photograph 3: Front View of the DUT - Tablet



Photograph 4: Rear View of the DUT - Tablet



Photograph 5: Front View of the DUT - Laptop





## Setup Photos

Photograph 6: Handset Vertical and Horizontal Reference Lines

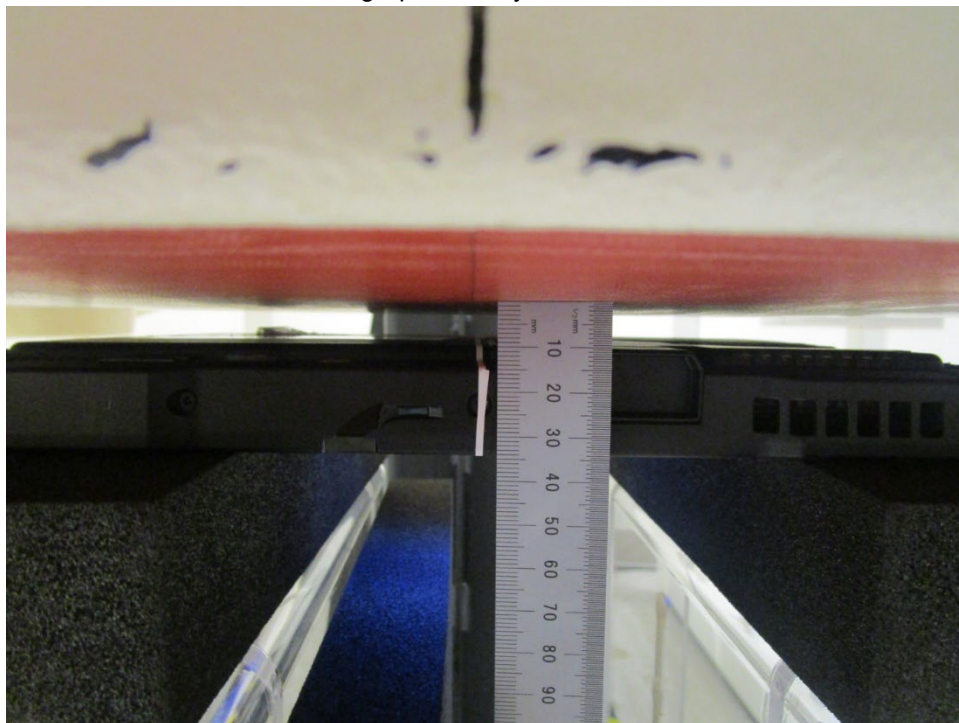


## Body Exposure Conditions

Photograph 7: Body, Rear, 0 mm



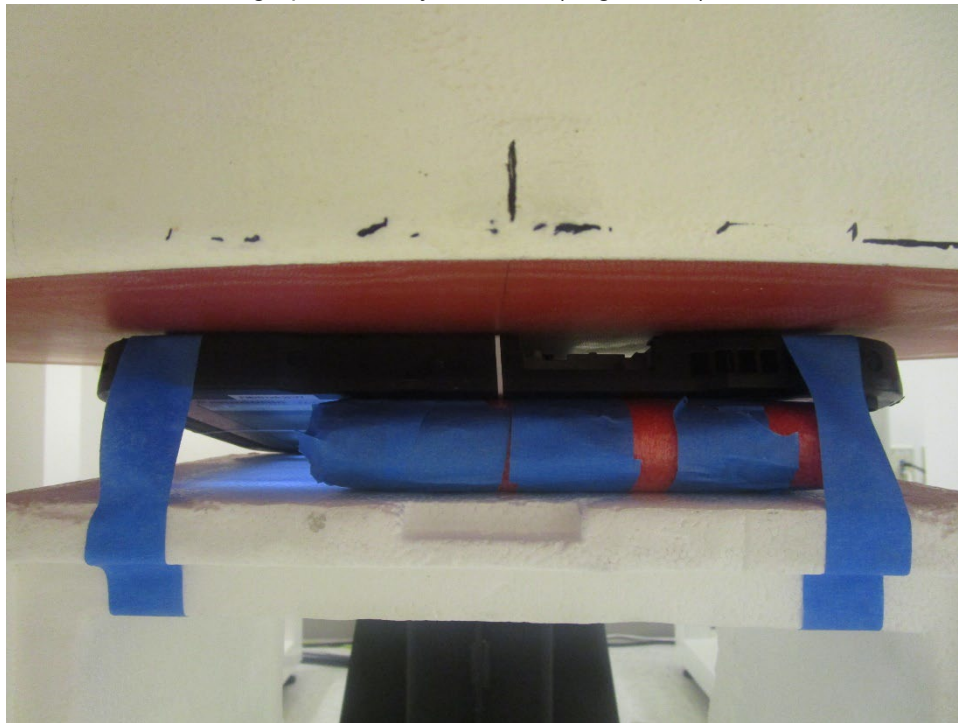
Photograph 8: Body, Rear, 9 mm



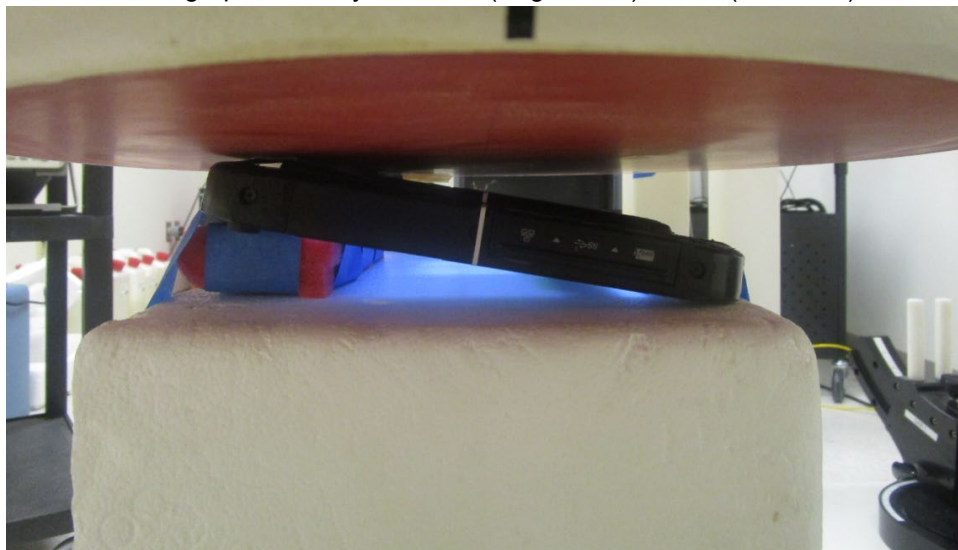
Photograph 9: Body, Edge1, 0 mm



Photograph 10: Body, Rear Tilt (Edge1 side), 0 mm



Photograph 11: Body, Rear Tilt (Edge1 side), 0 mm (side view)

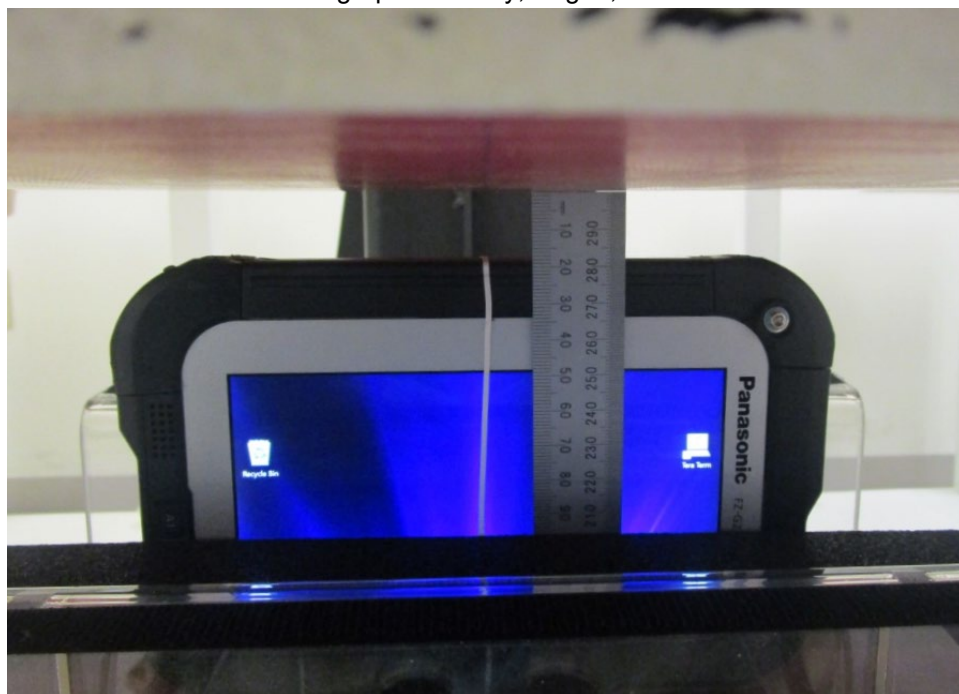




Photograph 12: Body, Edge4, 0 mm



Photograph 13: Body, Edge4, 19 mm

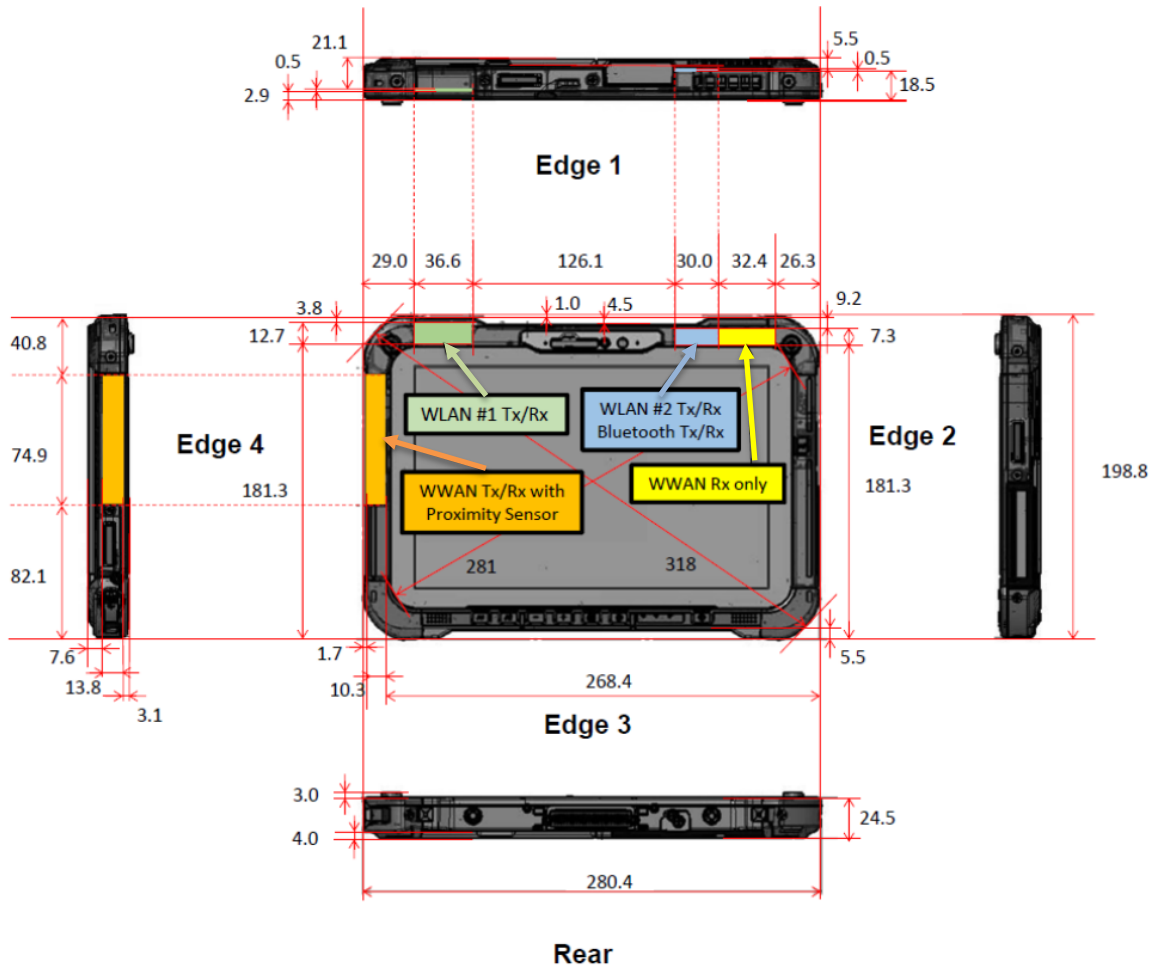


Photograph 14: Body, Rear Tilt (Edge4 side), 9 mm



## Antenna Dimensions & Separation Distances (mm)

### Tablet



### Laptop Side Views

