

<b>Test Report S/N:</b>	102604KBC-T575-E15W/E15B	Issue 1.0
<b>Test Date(s):</b>	01Nov04 - 06Dec04	
<b>Test Type(s):</b>	FCC §15.247	IC RSS-210 Issue 5
<b>Lab Registration(s):</b>	FCC #714830	IC Lab File #3874


## B.6. SETUP PHOTOS

Photograph B-1 - AC Powerline Conducted Emission Configuration



Photograph B-2 - AC Powerline Conducted Emission Cable Placement

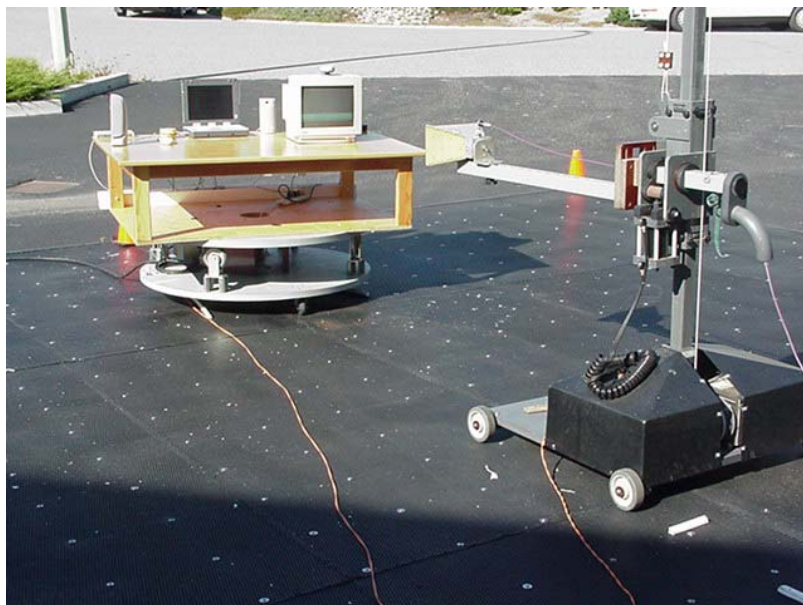


<b>Applicant:</b>	Itronix Corporation	<b>Model:</b>	IX260PNLA775BT	<b>IC ID:</b>	1943A-IX260Pe	<b>FCC ID:</b>	KBCIX260PNLA775BT
<b>Rugged Laptop PC with internal Senao NL-3054MP 802.11b/g WLAN and Cirronet BT2022 Bluetooth</b>							
2004 Celltech Labs Inc		This document is not to be reproduced in whole or in part without the written permission of Celltech Labs Inc.					17 of 45

<b>Test Report S/N:</b>	102604KBC-T575-E15W/E15B	Issue 1.0
<b>Test Date(s):</b>	01Nov04 - 06Dec04	
<b>Test Type(s):</b>	FCC §15.247	IC RSS-210 Issue 5
<b>Lab Registration(s):</b>	FCC #714830	IC Lab File #3874


## E.7. SETUP PHOTOGRAPHS

Photograph E-1 - 3115 Horn Antenna



## E.8. DUT OPERATING DESCRIPTION

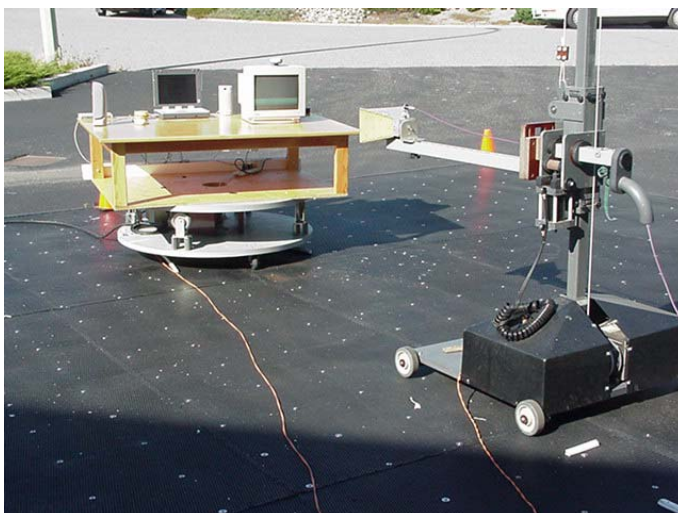
Measurements were made of the bands that may contain inter-modulation products with both the Bluetooth and WLAN radios transmitting. Measurements were made for each combination of WLAN channels and Modes (low and high, Mode b and g) with the Bluetooth transmitter hopping or on a worse case channel when defined.

<b>Applicant:</b>	Itronix Corporation	<b>Model:</b>	IX260PNLA775BT	<b>IC ID:</b>	1943A-IX260Pe	<b>FCC ID:</b>	KBCIX260PNLA775BT
<b>Rugged Laptop PC with internal Senao NL-3054MP 802.11b/g WLAN and Cirronet BT2022 Bluetooth</b>							
2004 Celltech Labs Inc		This document is not to be reproduced in whole or in part without the written permission of Celltech Labs Inc.					30 of 45

<b>Test Report S/N:</b>	102604KBC-T575-E15W/E15B	Issue 1.0
<b>Test Date(s):</b>	01Nov04 - 06Dec04	
<b>Test Type(s):</b>	FCC §15.247	IC RSS-210 Issue 5
<b>Lab Registration(s):</b>	FCC #714830	IC Lab File #3874

## F.7. SETUP PHOTOGRAPHS

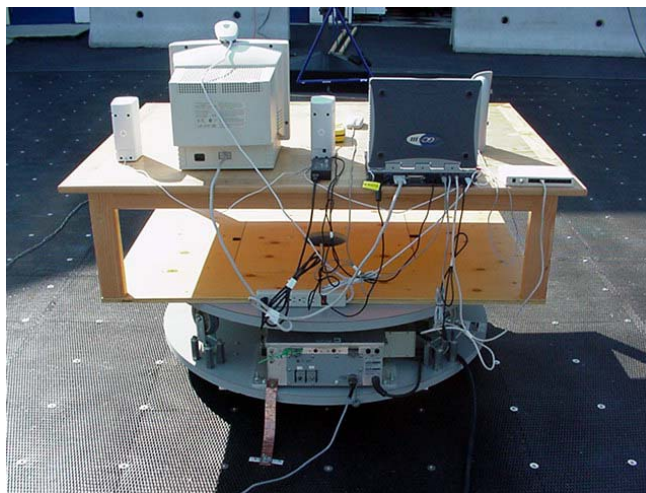
Photograph F-1 - 3115 Horn Antenna



Photograph F-2 - Front of Radiated Emission Configuration




Photograph F-3 - Back of Radiated Emission Configuration



## F.8. DUT OPERATING DESCRIPTION

Measurements were made of the bands that may contain inter-modulation products with both the Bluetooth and WLAN radios transmitting. Measurements were made for each combination of WLAN channels and Modes (low and high, Mode b and g) with the Bluetooth transmitter hopping or on a worse case channel when defined.

<b>Applicant:</b>	Itronix Corporation	<b>Model:</b>	IX260PNLA775BT	<b>IC ID:</b>	1943A-IX260Pe	<b>FCC ID:</b>	KBCIX260PNLA775BT
<b>Rugged Laptop PC with internal Senao NL-3054MP 802.11b/g WLAN and Cirronet BT2022 Bluetooth</b>							
2004 Celltech Labs Inc		This document is not to be reproduced in whole or in part without the written permission of Celltech Labs Inc.					36 of 45