

# Smart WATCH II

VOICE COMMAND CAR  
INTELLIGENT TOYS EXPERT  
DIY LED  
COLORFUL BODY



changes or modifications not expressly approved by the party responsible for compliance could void the user's authority to operate the equipment.  
This equipment has been tested and found to comply with the limits for a Class B digital device, pursuant to Part 15 of the FCC Rules. These limits are designed to provide reasonable protection against harmful interference in a residential installation. This equipment generates, uses and can radiate radio frequency energy and, if not installed and used in accordance with the instructions, may cause harmful interference to radio communications. However, there is no guarantee that interference will not occur in a particular installation.

If this equipment does cause harmful interference to radio or television reception, which can be determined by turning the equipment off and on, the user is encouraged to try to correct the interference by one or more of the following measures:

- Reorient or relocate the receiving antenna.
- Increase the separation between the equipment and receiver.
- Connect the equipment into an outlet on a circuit different from that to which the receiver is connected.
- Consult the dealer or an experienced radio/TV technician for help.

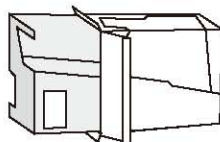


SMART WATCH VOICE COMMAND CAR

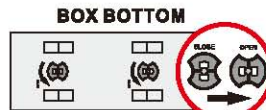
## INSTRUCTION MANUAL



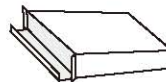
Product Accessories



1. Remove the wrapper and take out sideways the accessory bag and the inner box.



2. Turn the bottom knob of the inner box to left to open it and take out the product.



3. Take out the watchband, instruction and the USB cable.

## PARTS INCLUDED



Mini Car



Smart Watch



USB power cord



Instruction Manual



## SMART WATCH VOICE COMMAND CAR INSTRUCTION MANUAL

Smart WATCH II  
VOICE COMMAND CAR  
VERSION II  
INTELLIGENT TOYS EXPERTS



### Function 1

Default Setting of Voice Control Order in English

GO FORWARD  
TURN LEFT

GO BACK  
TURN RIGHT

CAR BRAKE  
TURBO

DEMO  
SPIN OUT

### Function 2

Manual Mode



Forward



Backward



Turn Left



Turn Right

Speedup



Demo



Stop

Spin out

### Function 3

Customized Mode



RECORD MODE

Forward

Backward

Turn Left

Turn Right

Customized Order

Customized Order

Customized Order

Customized Order

Turbo

Stop

Demo 1

Demo 2

Customized Order

Customized Order

Customized Order

Customized Order

### Function 4

Colorful Lights



DIY Light Color  
Controller



Colors to choose

Quick Instruction

## SMART WATCH VOICE COMMAND CAR INSTRUCTION MANUAL



Change the car speed with 5 levels. The default setting is Level 3, shift by pressing the "-" and "+" buttons. Each lit light indicates different speed level. Users can handle the machine better with certain speed level according to their skill. Use voice order "Speedup" to achieve the peak velocity of each speed level for 2 seconds.

Function 1: After turning on the switch **ON** **OFF** of the smartwatch and the car, press the E-switch for 2 seconds to connect the watch with the car. Connection succeeds when the car is heard, then the machine is on use.  
Function 2: In any case, press to emergency brake and block any order.



Speedup



Stop

Function 1: In the Manual Mode, press to accelerate when the car is running. The Speedup will go on for 2 seconds at the peak velocity, after that it will fall back to the normal level. When the car is not running, use Speedup order will make the car thunder.

Function 2: In the Voice Control Mode, speak "Speedup" to the microphone will be the same as Function 1.

Function 3: In the Record Mode, press and hold it for recording any voice as an speedup order. Record should be done in 3 seconds and then release the button to finish.

Function 1: In Manual Mode, press to stop the car from running. If the car is not running, the order will not have any effect.

Function 2: In Voice Control Mode, speak "Stop" to the microphone; the car will stop as indicated in Function 1.

Function 3: In the Record Mode, press and hold it for recording any voice as a stop order. Record should be done in 3 seconds and then release the button to finish.





## SMART WATCH VOICE COMMAND CAR INSTRUCTION MANUAL

VOICE COMMAND CAR  
**Smart WATCH** VERSION 1  
INTELLIGENT TOYS EXPERTS



**DEMO1**

**DEMO2**

Function 1: In Manual Mode, press to make the car running in a figure-eight pattern.

Function 2: In Voice Control Mode, speak "DEMO1" to the microphone; the car will run as indicated in Function 1.

Function 3: In the Record Mode, press and hold it for recording any voice as a DEMO1 order. Record should be done in 3 seconds and then release the button to finish.

Function 1: In Manual Mode, press to make the car drift automatically.

Function 2: In Voice Control Mode, speak "DEMO2" to the microphone; the car will run as indicated in Function 1.

Function 3: In the Record Mode, press and hold it for recording any voice as a DEMO2 order. Record should be done in 3 seconds and then release the button to finish.

Function 1: In Manual Mode, control with all directions. As seen in the Indicator 1, there are 8 directions as "Forward", "Backward", "Turn Left", "Turn Right", "Left Forward", "Right Forward", "Left backward" and "Right Backward". Each angle of 45 degrees means a direction to control the car running.

Function 2: In Voice Control Mode, speak "Forward", "Backward", "Turn Left" and "Turn Right" to control the car running in four directions.

Function 3: In Record Mode, press corresponding direction button and hold it for recording any voice as a direction order. There can be four directions as "Forward", "Backward", "Turn Left" and "Turn Right" to be recorded. Record should be done in 3 seconds and then release the button to finish. When the car is running, use the Voice Order to turn left/right, the car will turn left/right meanwhile keep running. Use the Forward Order again to make it run in straight line.

Function 4: In Color Control Mode, use the direction button to choose different light colors as you like.





**Multi-use  
Steering Wheel**






**Indicator 1**




DIY Light  
Color Controller


**Mode 1:** The 12 Colors Mode will be automatically activated when turn on the car (light color changes automatically according to the running status). Press the Color button , the light will be off. Press the button  again then the lights will go on with the 12 Colors Mode.

**Mode 2:** Press the button and hold for 2 seconds until all direction button  lit on then you can customize the color. Use the "Forward" and "Backward" buttons to change the color. If the color is chosen, press the Color button  to save and quit the setting then the car will keep the same light color. If you want to change the color, press the Color button  and hold for 2 seconds then you can choose the color again.

The colors' order: 

To record a voice order, press  and hold for 2 seconds, when see the direction buttons flickering, the controller is activated. The direction buttons will be lit clockwise to show that the system is ready for record. Press and hold the button which you want to record the voice order, then see the steering wheel lit anti-clockwise for one time in 3 seconds. The record should be done in these 3 seconds by speaking to the microphone. Release the button to finish the record. If see four direction buttons lit at the same time, means the record succeeded. If the lights go out in contrast, means the record failed, need to record again.

No matter the record succeed or not, it's necessary to wait until the direction button lit clockwise to continue the new record.

The system can record various buttons as you need, when all is done, press Record button  to save and quit the system.

Newly recorded voice order will replace the old one, those buttons which you do not record a new voice order will remain using the default voice order for the control.

Each button can only keep one voice order.

Recordable Buttons:



Speedup



Stop



DEMO1



DEMO2



Forward



Backward



Turn Left



Turn Right



## SMART WATCH VOICE COMMAND CAR INSTRUCTION MANUAL

VOICE COMMAND CAR  
**Smart WATCH** VERSION 1.1  
INTELLIGENT TOYS EXPERTS



Be cautious that press and hold the button for 3 seconds, all the information will be reset.

To turn on/off the headlights and the taillights of the car. The default setting is ON.

To control the volume of the car, press to Increase the volume. There are four volume levels as "High", "Medium", and "Low" and "Off". Press and hold the button to turn off the voice directly. The default setting is "High".

**Notes:** When giving voice orders, please speak to the smartphone with a distance approximately of 10cm – 40cm and match up with the button operations to achieve the best effect. Press the middle button or give the voice order of "Stop" can block any operation.

### **Cautions:**

1. The working voltage of the smartwatch is 3.7V; the connection will be weak and unstable when the voltage is lower than 3.2V. Please keep the watch's battery full charged before using it.
2. If the watch doesn't receive any order in 20 seconds, the sleep mode will turn on automatically and the car engine and lights will be off as well. The car will not activate until receiving new order or press the Start button.
3. Please turn off the watch when is not used. Charge the watch after a long time without using. The watch is not impermeable neither resistant to high temperature.





1. The default setting of velocity is Level 3; users can handle the machine better with certain speed level from 1 – 5 according to their skill.
2. When receives the Forward order, the headlights will keep on. When receives Backward order, the taillights will keep flickering. When receives Turn Left order, the headlight and taillight on the left side will keep flickering. When receives Turn Right order, the headlight and taillight on the right side will keep flickering.
3. When receives the Stop order, the car will stop from any actions and make a noise of braking.
4. When the Speedup order is given, the velocity of the car will achieve the peak value for 2 seconds. When the car is not running, use Speedup order will make the car thunder.
5. The color and flickering mode of the DIY LED on the top of the car can be changed by the operations of smartwatch.
6. The car is designed in a completely enclosed form and of shock absorption, in order to give a better performance in different road conditions. Please keep the car clean.
7. If the car doesn't receive any order in 30 seconds, the engine will be off automatically and the power saving mode will turn on.

Adjust the foreside spinner beneath the car to improve the performance of straight line running.

Angle Adjusting Spinner





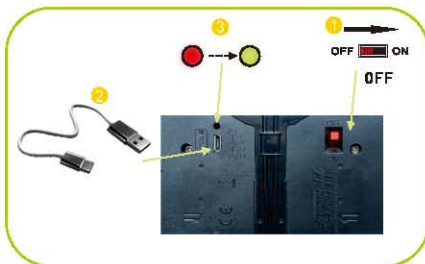


## SMART WATCH VOICE COMMAND CAR INSTRUCION MANUAL

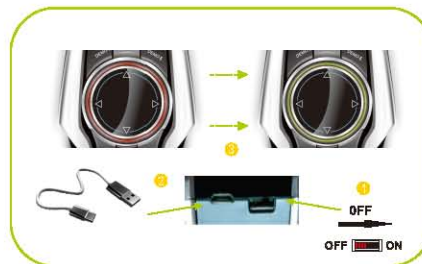
Smart WATCH II  
VOICE COMMAND CAR VERSION  
INTELLIGENT TOYS EXPERTS

Parameters	Endurance	Battery Model	Charging Time	Remote Control	Frequency
Smartwatch	100-120 mln	3.7V 100mAh lithium battery	20-25 mln	15-25 m	2.4Ghz(Competition with various cars at the same time)
Mini Car	50-60 mln	3.7V 1200mAh lithium battery	100-120 mln	15-25 m	

Charging Instructions



Mini Car



Smartwatch

1. Charger; Turn off first.
2. Connect the USB cable with the charger.
3. Start charging with the red light on; Charging done with the green light on, please pull out the charger.



**Cautions**

- ★ 1. Charge the smartwatch and the car at the first time or after a long time without use in order to activate the lithium battery.
- ★ 2. Do not change the lithium battery by yourself. If it is needed, ask for help from the professionals to avoid the short circuit.
- ★ 3. Use the original USB cable to charge. Try not to use other type of charger for the machine.
- ★ 4. Charge before adult supervision.
- ★ 5. Match the charger and the cable rightly.
- ★ 6. Turn off the car and the watch before charging. Switch off when the car will not be used for a long time.
- ★ 7. When the car slows down, means that the battery of the car is low, please charge the car.
- ★ 8. When the battery of the watch is low, the signal emitted will be weakened and it will be difficult to recognize. Please charge the watch.
- ★ 9. The car is equipped with a powerful engine, when get used to the operation of the low speed level, you can try the high speed.
- ★ 10. When using in the slippery road, it is easy to slip away or turn over. Please use the machine in other type of road.
- ★ 11. When using in a noisy circumstance, the control distance will be affected. Please use the machine in a proper circumstance.
- ★ 12. Open the box before adult guidance.
- ★ 13. Keep this manual for later reference.



## SMART WATCH VOICE COMMAND CAR INSTRUCION MANUAL

VOICE COMMAND CAR  
**Smart WATCH** VERSION 1  
INTELLIGENT TOYS EXPERTS

Shop name .....

Purchase date .....

Name .....

Mobile phone .....

Contact information .....

Address .....

Product problems .....

Warranty card

VOICE COMMAND CAR

**Smart** **II**

VERSION

**WATCH**

INTELLIGENT TOYS EXPERTS

SMART WATCH VOICE COMMAND CAR

# INSTRUCTION MANUAL