



OneCell®

Outdoor Radio Point Installation

Document Number: 913032

Document Revision: 1.04

Date: February 2016

What's in the box

The outdoor Radio Point (RP) ships with the following hardware:

- Radio Point with mounting plate and brackets attached
- Four mounting screws (M5 x 10mm)
- RJ45, IP67 connector
- Two N-type antenna couplers

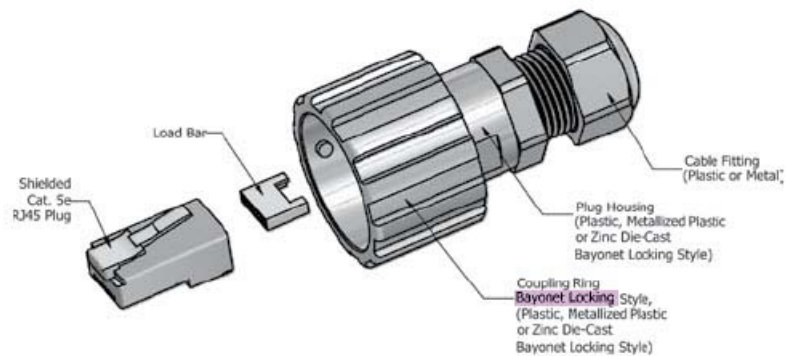
Mounting the Radio Point (RP) on a pole requires the following hardware provided by the system integrator:

- Two adjustable clamps

Mounting the Radio Point (RP) on a wall requires the following hardware provided by the system integrator:

- Four molly screws capable – 50 lb (23 kg) minimum rating

Before installing the RP on the pole, terminate the RP end of the Ethernet cable with the RJ45, IP67 connector provided in the box.



NOTE

For more information on installing Radio Points, see *OneCell Installation and Commissioning* (913025).

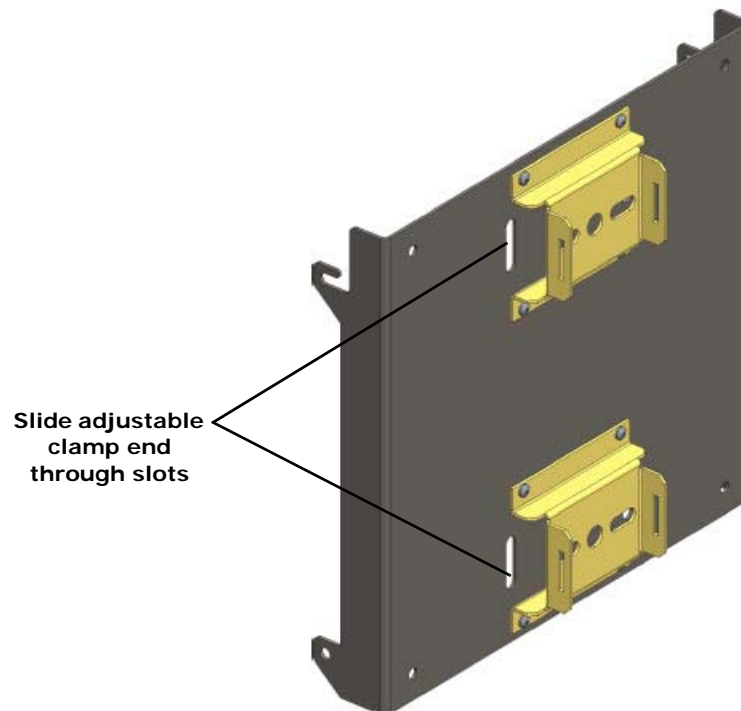
Pole mount installation



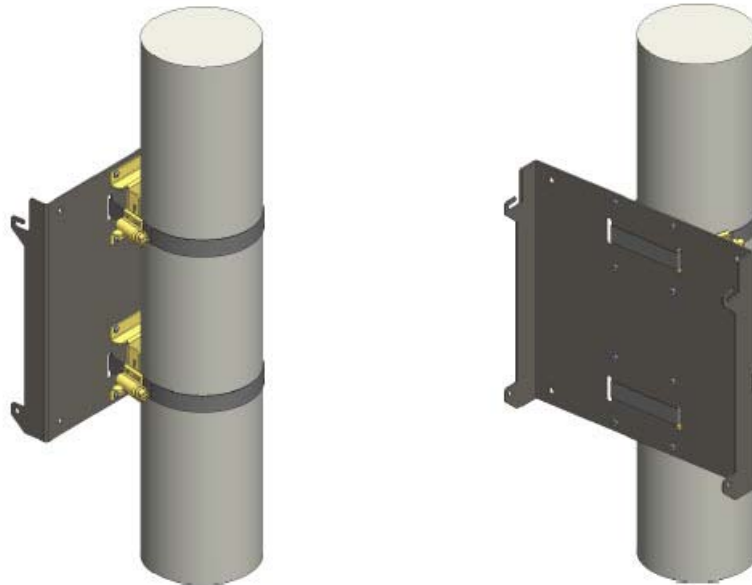
NOTE

The minimum pole diameter requirement is 4" (102mm).

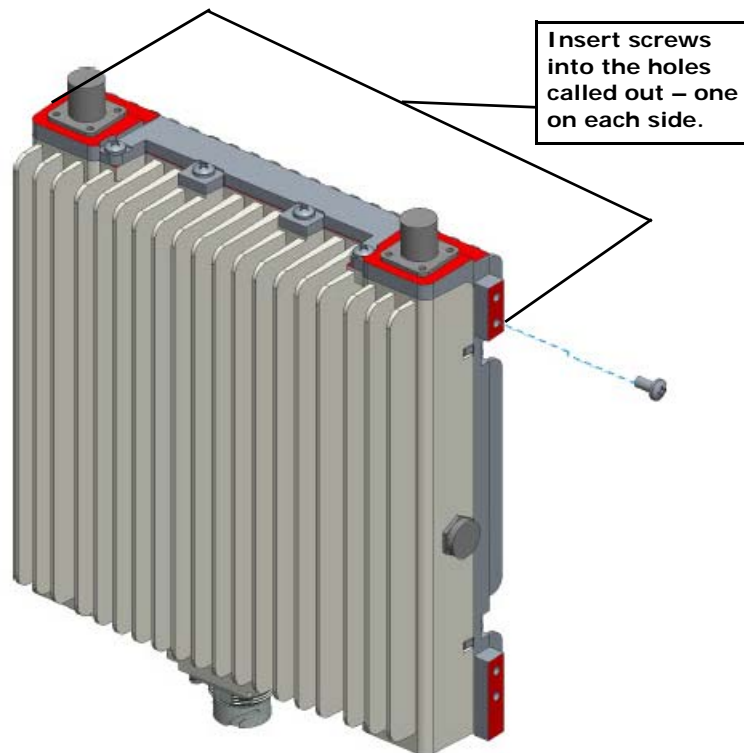
- 1 Slide the adjustable clamp through the slots on each RP mounting bracket on the RP plate.



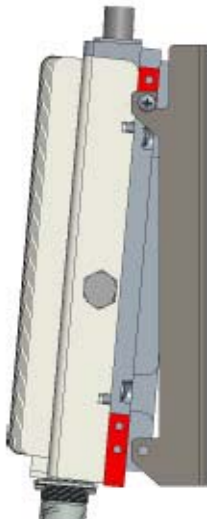
- 2** Wrap each clamp around the pole and tighten the clamp screw to secure the RP to the pole.



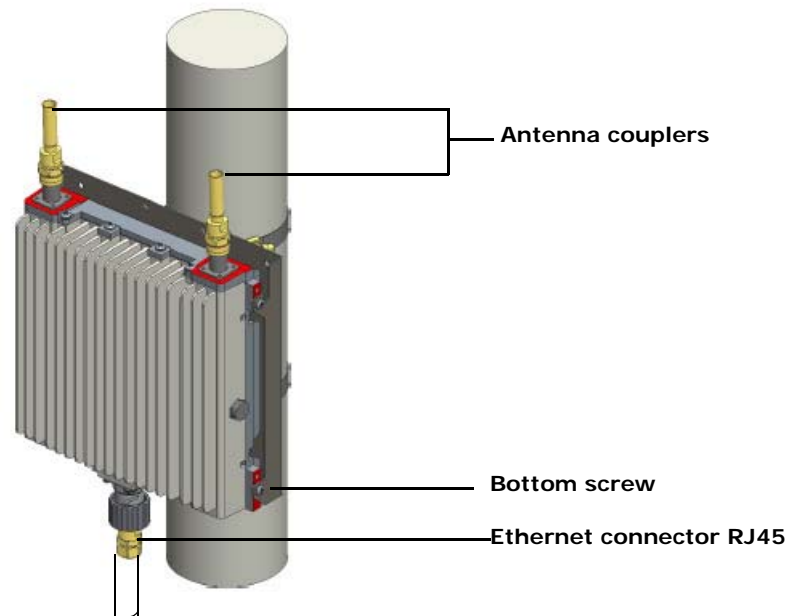
- 3** Insert two screws into the upper holes on opposite sides of the RP as shown in the drawing below.



- 4 Hang the RP to the mounting bracket using the installed screws. Align holes at bottom location of bracket and install two additional screws. Tighten all four screws.



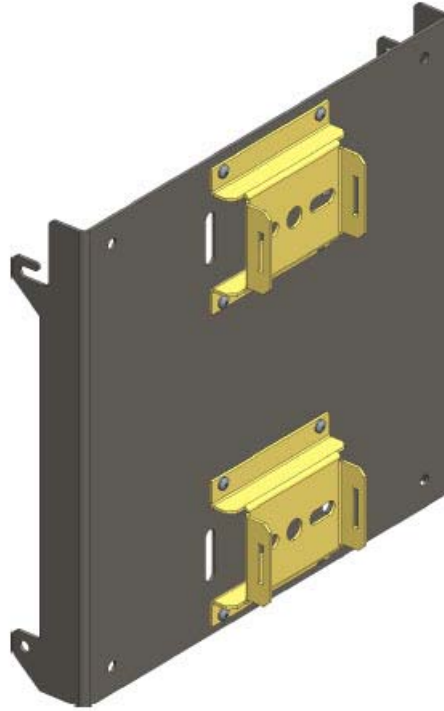
- 5** Insert and tighten the bottom screws through the plate hole into both sides of the RP.
- 6** Connect the antenna couplers on the top of the RP.
- 7** Connect the Ethernet cable RJ45 end to the bottom of the RP.



Installation complete. To configure the RP, see the commissioning procedures in *OneCell Installation and Commissioning* (913025).

Wall mount installation

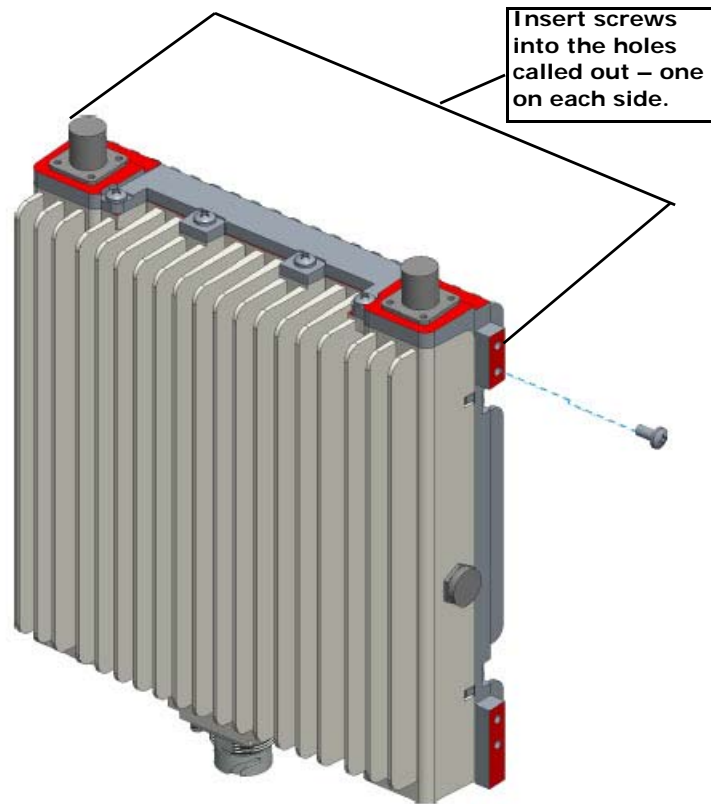
- 1 Remove the brackets from the back of the mounting plate.



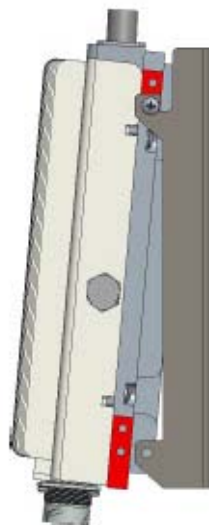
- 2** Drill four holes in the wall using the mounting plate to determine the hole locations. Mount the backplate on the wall with four molly screws.



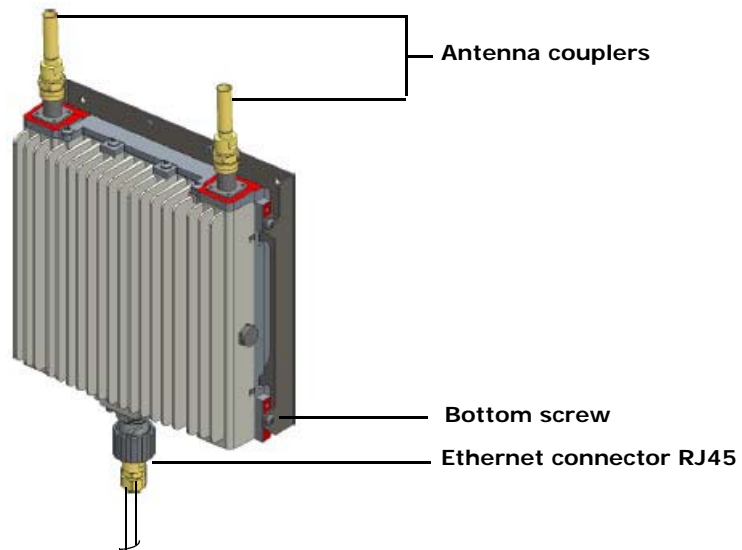
- 3** Insert two screws into the upper holes on opposite sides of the RP as shown in the drawing below.



- 4** Attach the RP to the mounting plate. Tighten the screws on the RP.



- 5 Insert and tighten the bottom screws through the plate hole into both sides of the RP.
- 6 Connect the antenna couplers on the top of the RP.
- 7 Connect the Ethernet cable RJ45 end to the bottom of the RP.



Installation complete. To configure the RP, see the commissioning procedures in *OneCell Installation and Commissioning* (913025).