

ANNEX B

PHOTOGRAPHS **(Number of photographs: 6)**

Report No.: 19950RET.101

Report No.:
19950RET.101

Date: 2004-07-05

Page: 1 of 7

Annex B

1. Equipment (external view)



Report No.:
19950RET.101

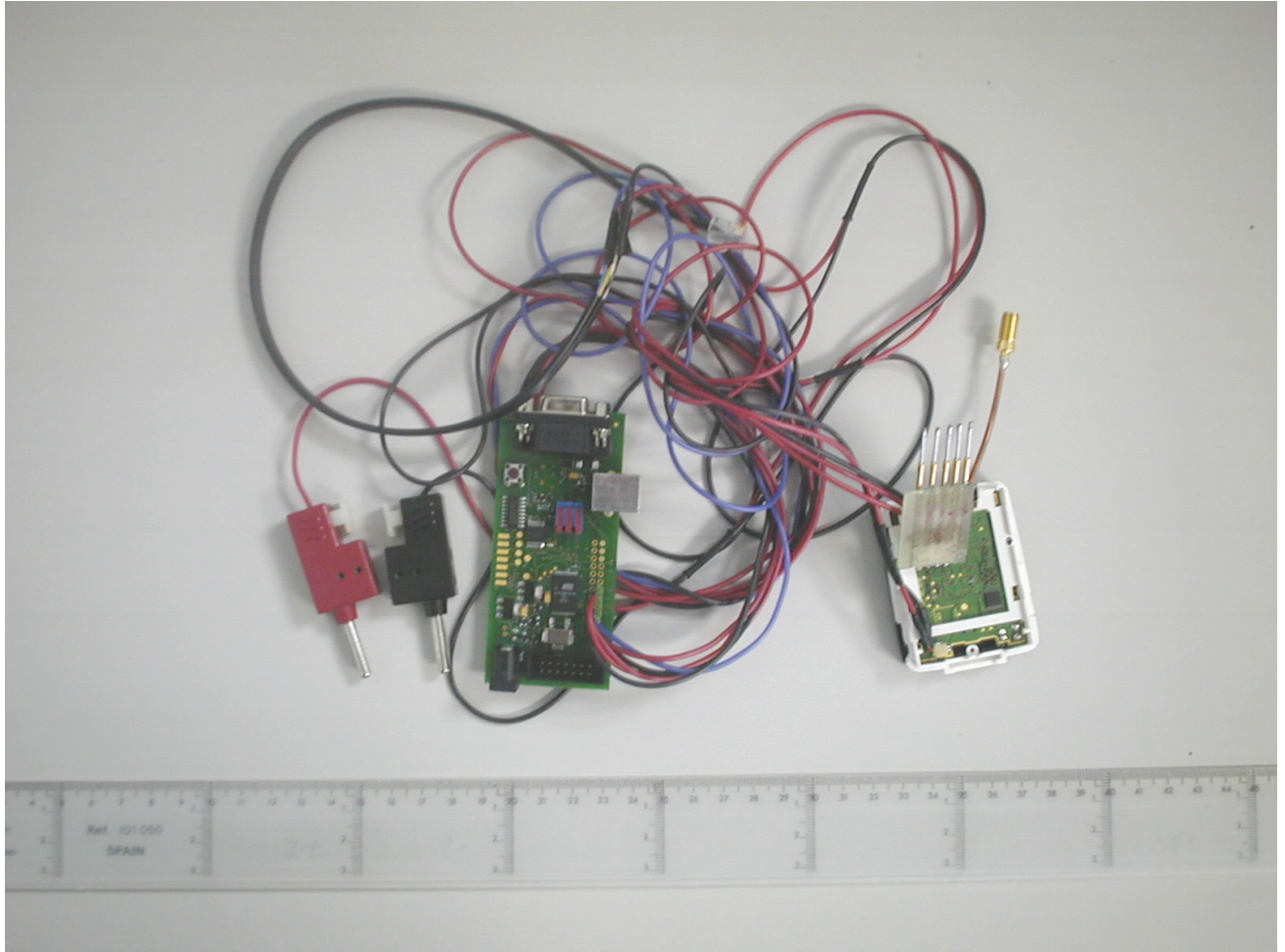
Date: 2004-07-05

FET18_00.DOC

Page: 2 of 7

Annex B

2. Equipment for conducted measurements.



Report No.:
19950RET.101

Date: 2004-07-05

FET18_00.DOC

Page: 3 of 7

Annex B

3. General test set-up for radiated measurements.



Report No.:
19950RET.101

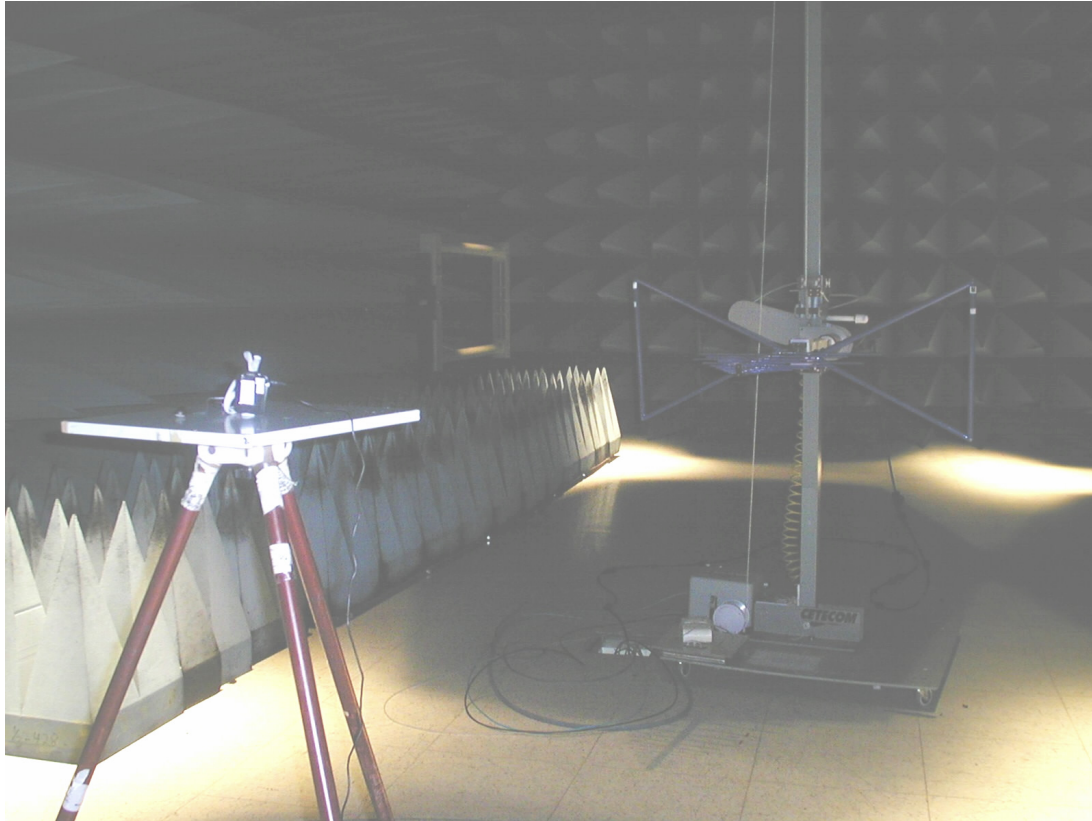
Date: 2004-07-05

FET18_00.DOC

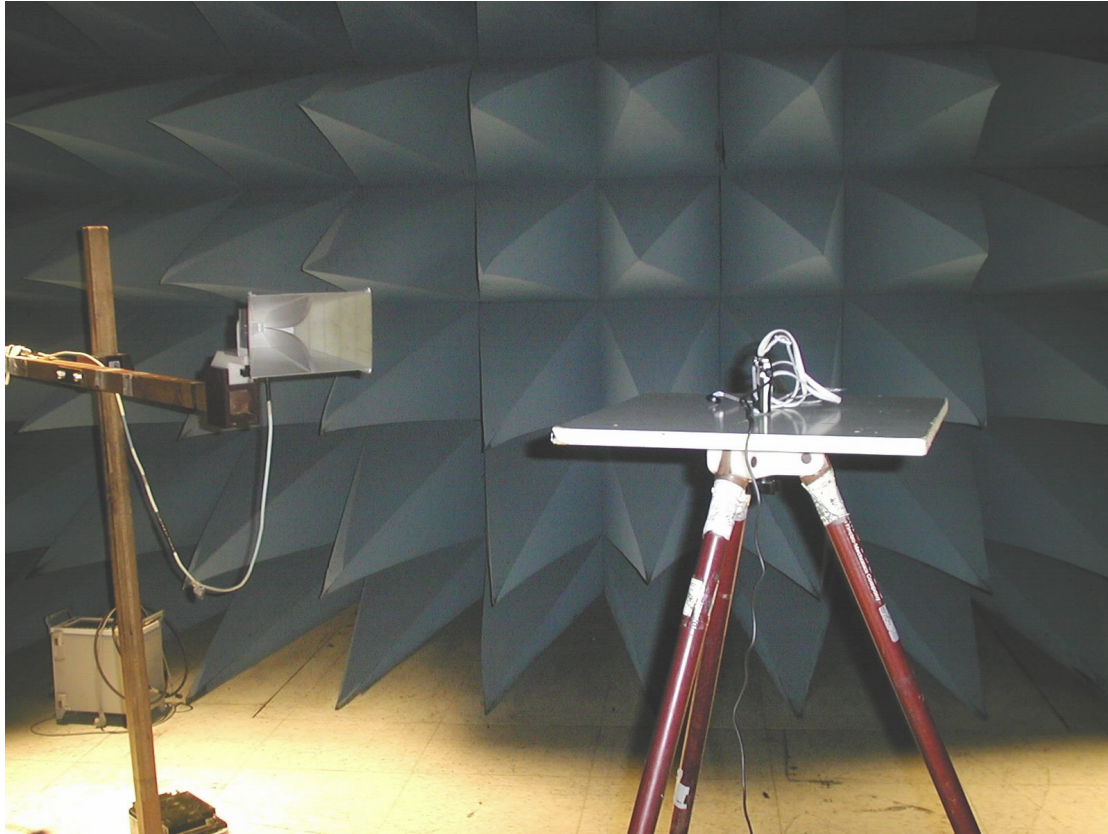
Page: 4 of 7

Annex B

4. Test set-up for radiated measurements below 1 GHz.



5. Test set-up for radiated measurements above 1 GHz.



Report No.:
19950RET.101

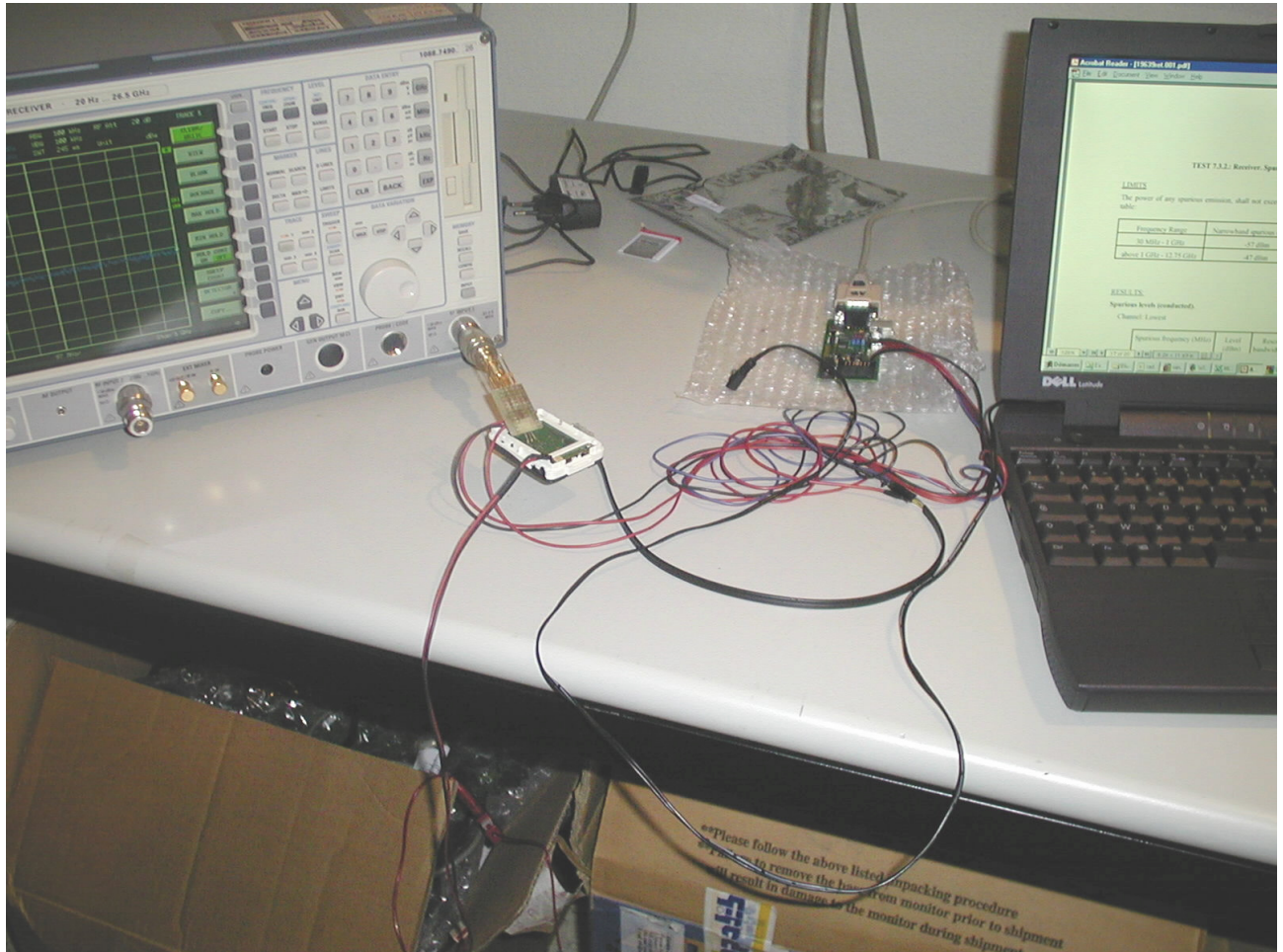
Date: 2004-07-05

FET18_00.DOC

Page: 6 of 7

Annex B

6. Test set-up for RF conducted measurements.



Report No.:
19950RET.101

Date: 2004-07-05

FET18_00.DOC

Page: 7 of 7

Annex B