

Truly Wireless Open Ear Headphones

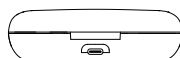
OPENEAR Lento

User Manual

Headphones



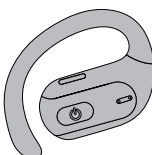
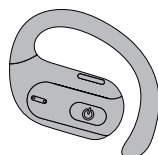
LED indicator



Type-C Charging

L

R

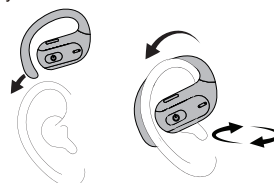


Specifications

Model: OPENEAR Lento
Type: Truly Wireless Open Ear Headphones
Version: 5.3
Connection: ≈10m
Weight: 20g (10g each earbud)
Earbud Play Time: ≈4.5H (80% volume)
Earbud Charging: 1.5H
Case Charge Earbud: 2 Times
Case Charging: 2H
Charging Voltage: DC 5V

How to Wear


Put the earhook behind the ear and rotate the headset until it fits your ear.



Operations

Power On/Off

Power On: The earbuds turn on automatically when open the lid of charging case. Prompt: power on pairing;

Power Off: The earbuds turn off when placed into the charging case and closed the lid. Or press and hold the button  on the earbuds for 5 sec. Prompt: power off.

BT Connection

Select "OPENEAR Lento" in BT menu to connect. Prompt: connected.

Answer/Hang Up/Reject A Call

Answer/Hang Up A Call: Click 1x of any earbuds.
Reject A Call: Hold on 1.5s of any earbuds.

Play/Pause Music

Click 1X of any earbuds.

Previous/Next Track

Previous Track: Click 3X of Left earbud.
Next Track: Click 3X of Right earbud.

Volume Up/Down

Volume Up: Click 2X of Right earbud.
Volume Down: Click 2X of Left earbud.

Activate Voice Command

Hold on for 2s of any earbuds to activate voice assistant.

Low Battery

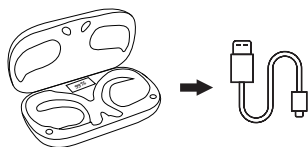
The white LED flashes when the earbud battery is lower than 10%, prompt: battery low.

Charge

Place the earbuds into the charging case. Green LED is on while charging. The LED is off when fully charged.

Charging Case LED Display

The digital display in the charging case represents the remaining battery of charging case. Please use the DC 5V adapter and Type-C charging cable to charge.



Attentions

1. Listening to loud music for a long time may cause discomfort, please use medium volume if possible. Do not use high volume for long periods of time.
2. Using headphones will affect your perception of the surrounding environment. Pay more attention when using headphones.
3. Do not remove or modify the headphone, as this may cause damage or burn out.
4. Do not throw, twist on headphones or put them into a fire.
5. Keep it away from fire, hydration and high pressure equipment.
6. Not suitable for children under 10-year-old containing small parts.
7. Do not classify it as household waste. Please send it to the local electrical equipment recycling station.

Note: The company does not assume any responsibility for the loss of personal property caused by the violation of the above warnings.

FCC Warning Statement

Changes or modifications not expressly approved by the party responsible for compliance could void the user's authority to operate the equipment. This equipment has been tested and found to comply with the limits for a Class B digital device, pursuant to Part 15 of the FCC Rules. These limits are designed to provide reasonable protection against harmful interference in a residential installation. This equipment generates uses and can radiate radio frequency energy and, if not installed and used in accordance with the instructions, may cause harmful interference to radio communications. However, there is no guarantee that interference will not occur in a particular installation. If this equipment does cause harmful interference to radio or television reception, which can be determined by turning the equipment off and on, the user is encouraged to try to correct the interference by one or more of the following measures:

- - Reorient or relocate the receiving antenna.
- - Increase the separation between the equipment and receiver.
- - Connect the equipment into an outlet on a circuit different from that to which the receiver is connected.
- - Consult the dealer or an experienced radio/TV technician for help.

FCC Radiation Exposure Statement

The device has been evaluated to meet general RF exposure requirement. The device can be used in portable exposure condition without restriction.

This device complies with Part 15 of the FCC Rules. Operation is subject to the following two conditions:
(1) This device may not cause harmful interference, and
(2) This device must accept any interference received, including interference that may cause undesired operation.