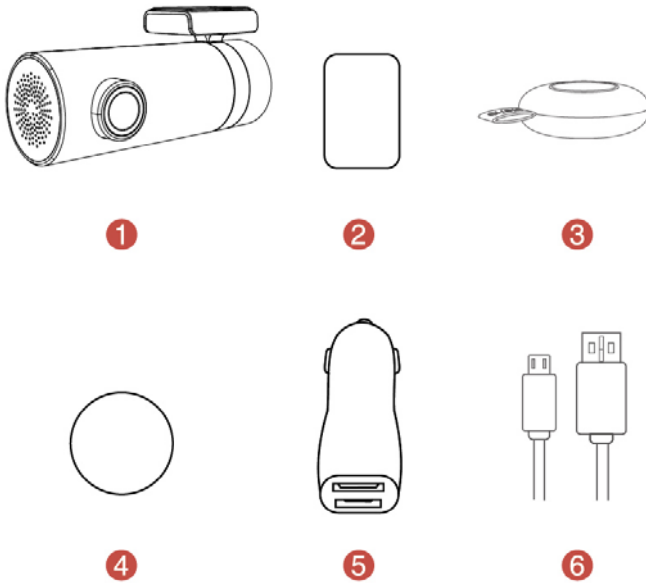




mini2

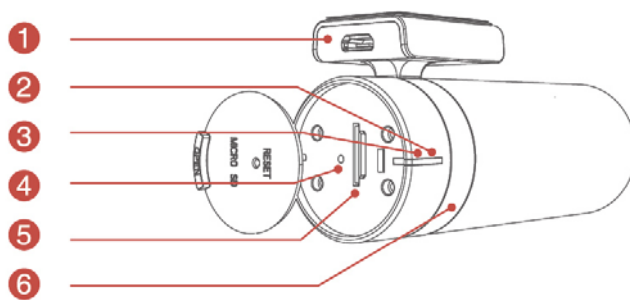
用户手册
User's Manual

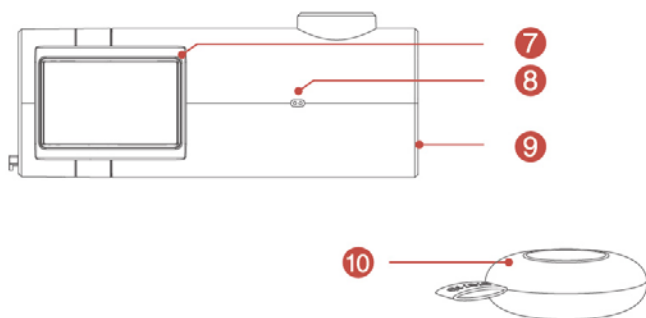
1 Package Contents



- | | |
|-------------------|------------------------|
| ① mini2 Camera ×1 | ④ Removable Sticker ×1 |
| ② 3M Sticker ×1 | ⑤ Car Power Adapter ×1 |
| ③ Remote Snap ×1 | ⑥ USB Cable ×1 |

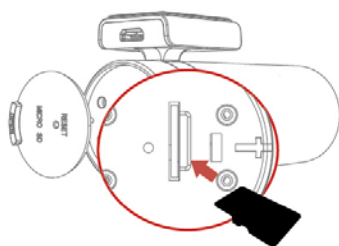
2 mini2 Camera at a Glance



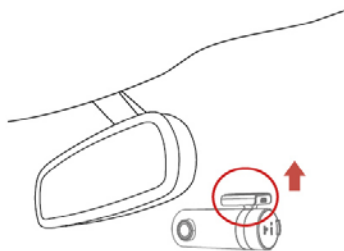


- | | |
|-----------------------------|----------------------|
| ① Micro USB Power Socket | ⑥ Shaft |
| ② Working Indicator (Red) | ⑦ Plastic stent |
| ③ Parking mode (Blue) | ⑧ Mic |
| ④ Reset Button | ⑨ Speaker |
| ⑤ TF Card Slot | ⑩ Remote Snap Button |

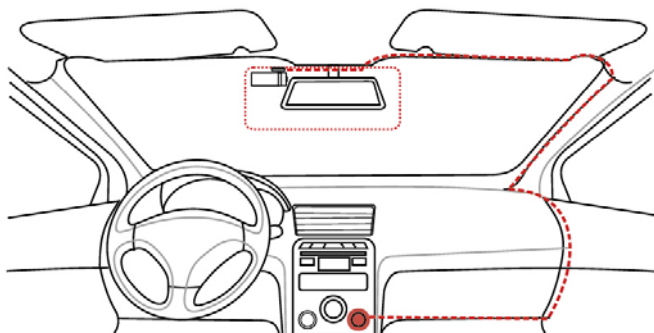
3 Getting Started



- ① Insert the TF Card into the Slot
(note the direction).



- ② Stick the plastic stent onto the windshield
(note the position).



- ③ Connect the USB cable with camera and Car adapter. When the car starts up, the camera will boot up automatically with voice prompt "Hello".

Note:

- Support up to 64GB TF Card. Class 10 is necessary. Do not plug the TF card when the Camera is working.
- Please plug the USB cable in the 2.1A output of the car adapter.
- Please do not refit the power supply.
- You can stick the remote snap button on the Console, beside the gear, or on the steering wheel. DO NOT put it on the position of Airbag.

4 Instructions for use

1. App Download

For Android/iOS Apps, Please search for **DDPai** in Google Play or App Store, download and install.

2. Connect the Camera to mobile phone

For iPhone:

iPhone Settings — WLAN — Select vyou_DDPai_mini2 — Enter the Password 1234567890 to connect the camera AP — Launch DDPai App and the camera will be displayed in the camera list.

For Android:

Launch DDPai App — Click "+" to Search the camera — Select DDPai_mini2 in the WiFi list — Enter the Password 1234567890 to connect camera.

Note: For Android, do not connect the camera WiFi in phone settings. If forgotten the password, press the reset button for a few seconds to restore factory settings. The initial password is 1234567890.

3. Live Preview ,playback and video clips download

Preview: When the mobile phone is connected to the Camera, click play button to preview the Real-time video.

Playback: In full-screen preview mode, drag the progress bar or slide the touch screen, and find the photo that you need by thumbnail images and playback.

Download video clips: In playback mode, click the scissors icon to launch download UI, and drag the progress bar and find the video clips to download.

4. Take a photo or record video

Click the remote snap button to capture a photo. Switch on the "10s video" option in the camera setting to record 10 seconds video (5 seconds before and after the click action). The photos and videos will be specially stored in the Camera TF Card and wait a few seconds to be transferred into your mobile phone.

5. Photo Album management and Share the photos

Check all the photos and videos in photo album. You can choose several photos to add to favorite, or delete, or share to social network.

6. Pair the remote button to camera

If the remote snap doesn't work, press the button to check the indicator light. If the indicator light is on, please enter the Camera Setting-Advance Settings-remote controller pairing, and take the remote snap near the camera and press the button several times to pair.

If the indicator light is not on, the battery may have run down. Please open the rear cover of the remote snap and replace a new battery cell.

7. Other settings

Enter the setting to modify the general settings. To change the camera setting, you must connect the camera and enter the camera settings. You can change the image quality, mute the mic, adjust the volume etc.

For frequently asked questions , please enter "Me-Help".

5 Attention

- Apps and Camera firmware continuously update.
- Store temperature: -20℃~70℃
- Stain on the lens would seriously reduce the image quality. Cleaning tool is very simple: the lens paper with a cloth or a fine tool, lens brush and cleaning sets. Do not use cardboard, paper towel or napkin to clean the lens.
- In case of some troubles or damage do not attempt repairing the camera by yourself. The camera must be repaired or adjusted only by specialists.
- When this product reaches its end of life, take it to a collection point designated by local authorities for the recycling of electronic equipment.
- **FCC STATEMENT :**
This device complies with Part 15 of the FCC Rules. Operation is subject to the following two conditions:
(1) This device may not cause harmful interference, and
(2) This device must accept any interference received, including interference that may cause undesired operation.

Warning: Changes or modifications not expressly approved by the party responsible for compliance could void the user's authority to operate the equipment.

NOTE: This equipment has been tested and found to comply with the limits for a Class B digital device, pursuant to Part 15 of the FCC Rules. These limits are designed to provide reasonable protection against harmful interference in a residential installation. This equipment generates uses and can radiate radio

frequency energy and, if not installed and used in accordance with the instructions, may cause harmful interference to radio communications. However, there is no guarantee that interference will not occur in a particular installation. If this equipment does cause harmful interference to radio or television reception, which can be determined by turning the equipment off and on, the user is encouraged to try to correct the interference by one or more of the following measures:

Reorient or relocate the receiving antenna.

Increase the separation between the equipment and receiver.

Connect the equipment into an outlet on a circuit different from that to which the receiver is connected.

Consult the dealer or an experienced radio/TV technician for help.

RF warning statement:

This equipment complies with FCC radiation exposure limits set forth for an uncontrolled environment. This equipment should be installed and operated with minimum distance 20cm between the radiator & your body

6 Specifications

1. Main hardware

CPU: 1440P/H.264 encoder

Image Sensor: 4 Megapixel color CMOS 1/3 inch CMOS Sensor

Lens: 6-glasses, 140°Wide Angel, F1.8

2. Technical Parameters

Wireless: WiFi & 2.4GHz

Storage: Class10 TF Card, up to 64GB

Video Output: Wireless video stream to mobile phone

G-Sensor: three axis acceleration sensor, collision latch, APP adjusting sensitivity.

Video pixel: 2560x1440

Camera pixel: 2592x1520

RAM: 256M