

EXHIBIT 1 - PRODUCT LABELING

Proposed FCC ID Label Format



Specifications: Text is Black in color and justified. Labels are printed in indelible ink on permanent adhesive silk-screened onto the EUT or shall be affixed at a conspicuous location on the EUT.

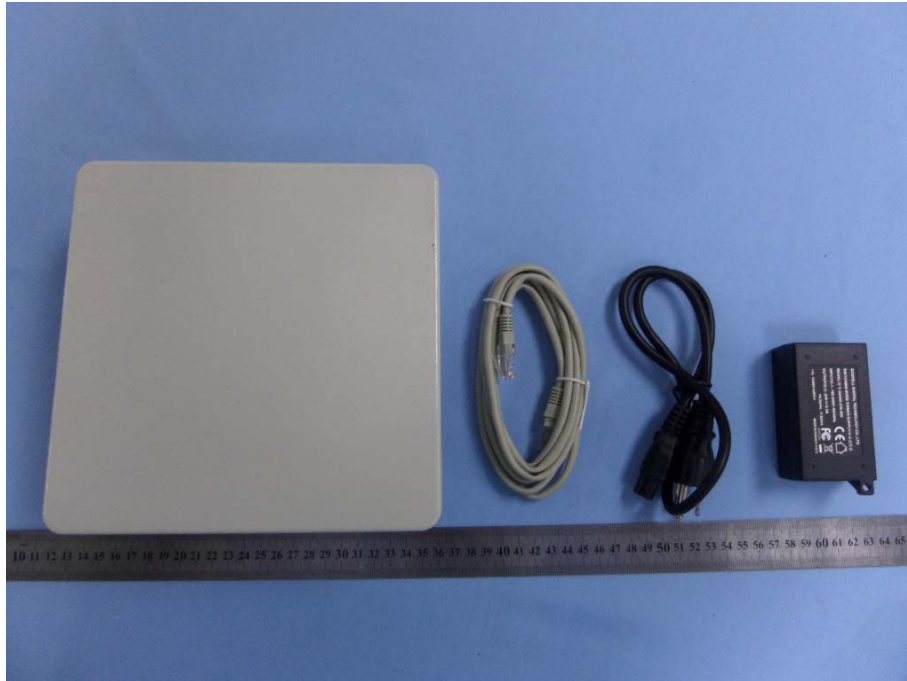
Proposed Label Location on EUT

FCC ID Label Location

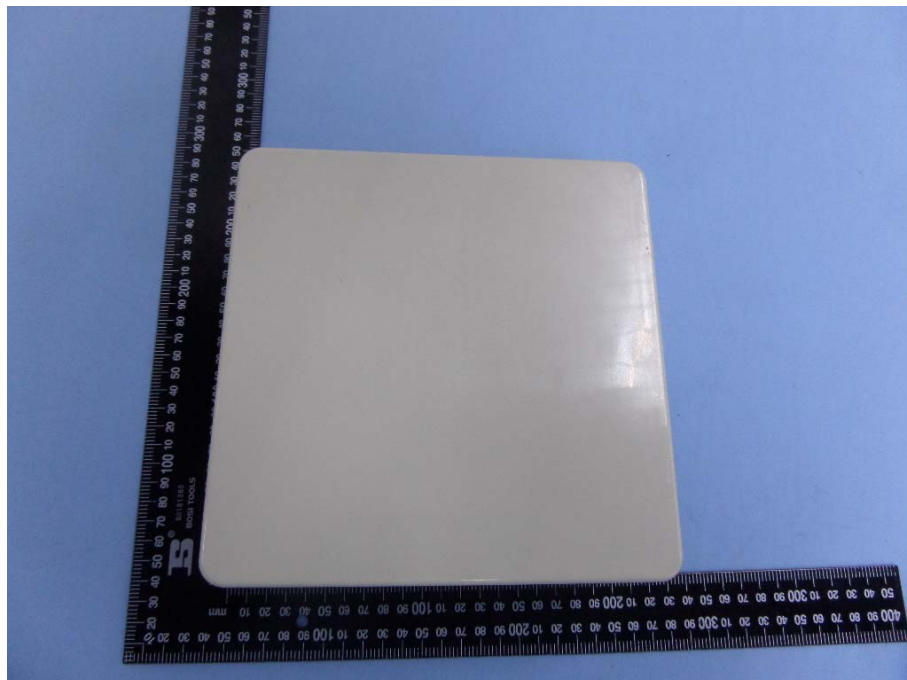


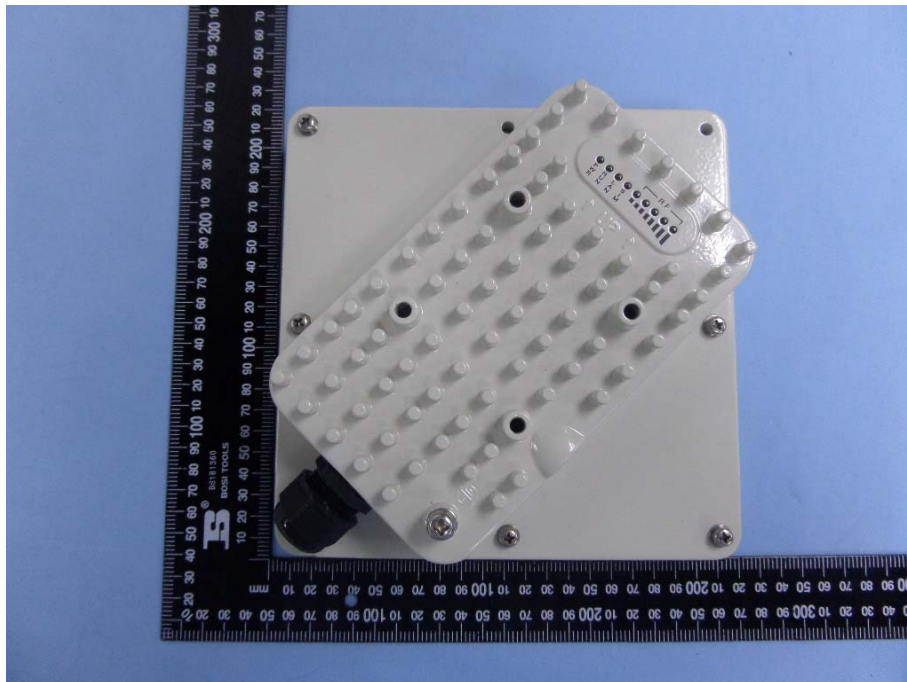
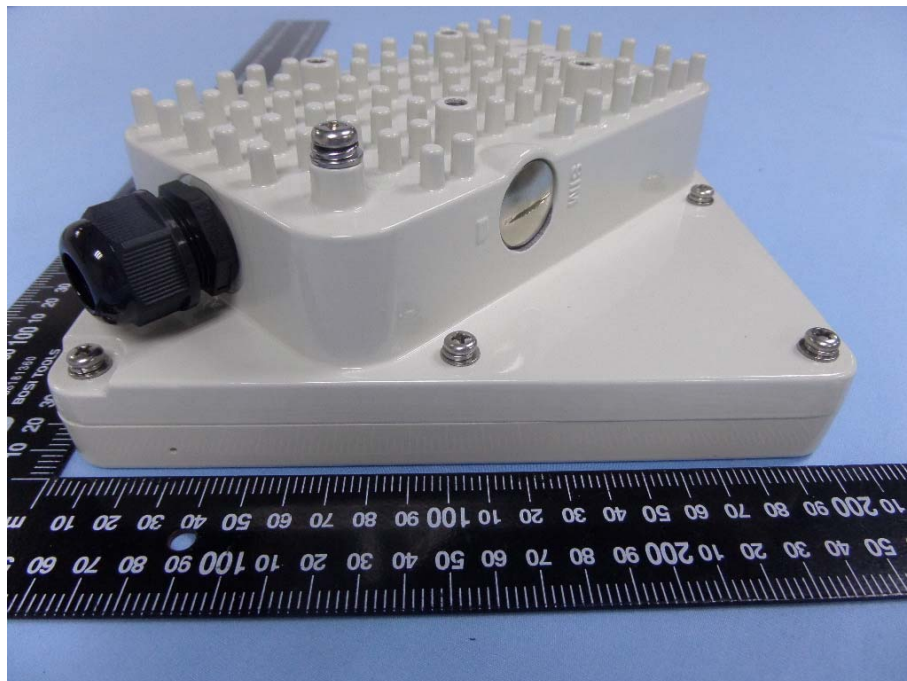
EXHIBIT 2 - EUT EXTERNAL PHOTOGRAPHS

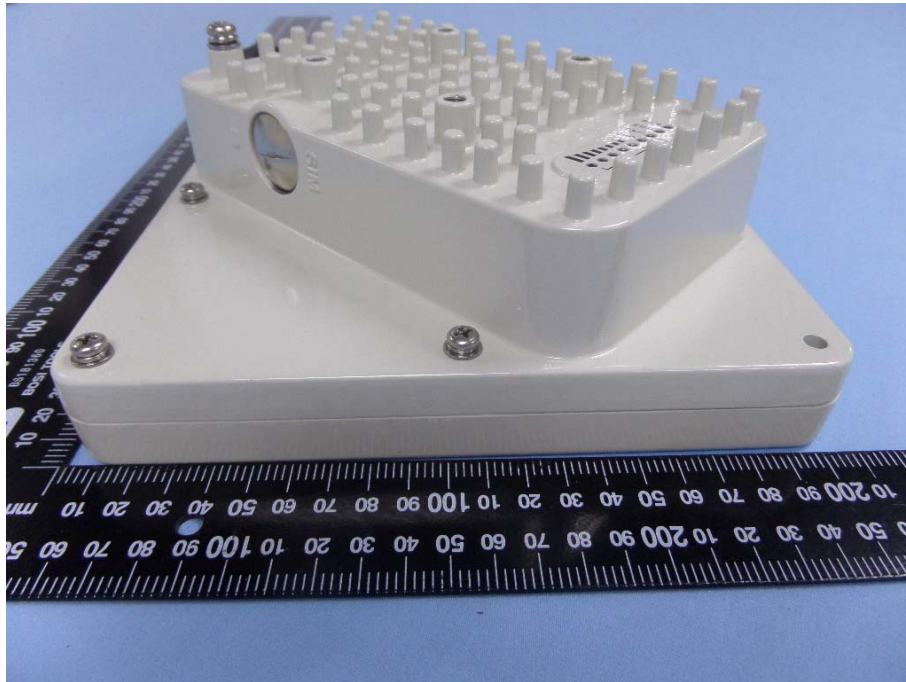
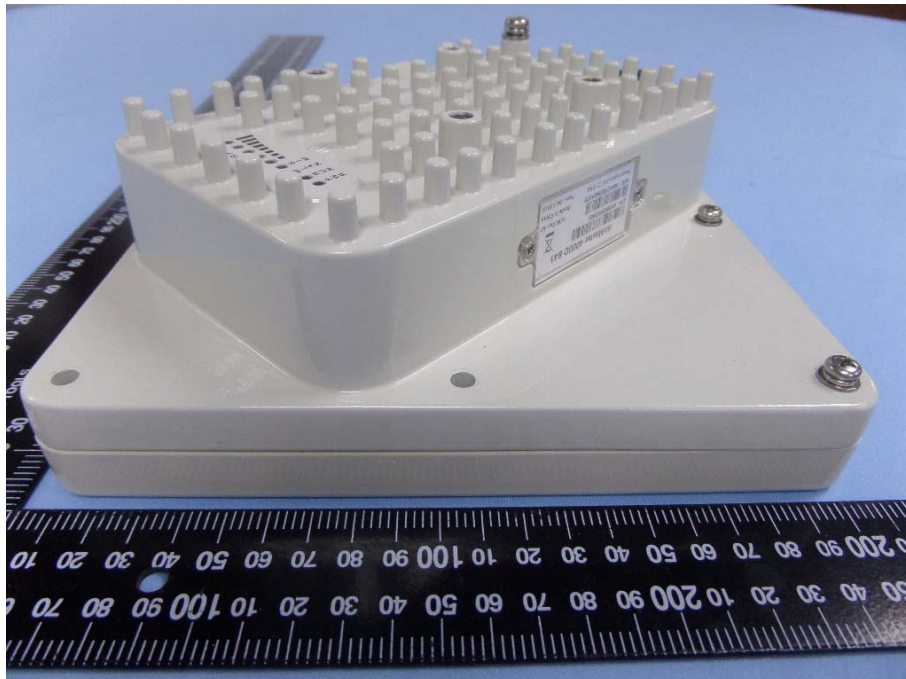
EUT View 1



EUT View 2



EUT View 3**EUT View 4**

EUT View 5**EUT View 6**

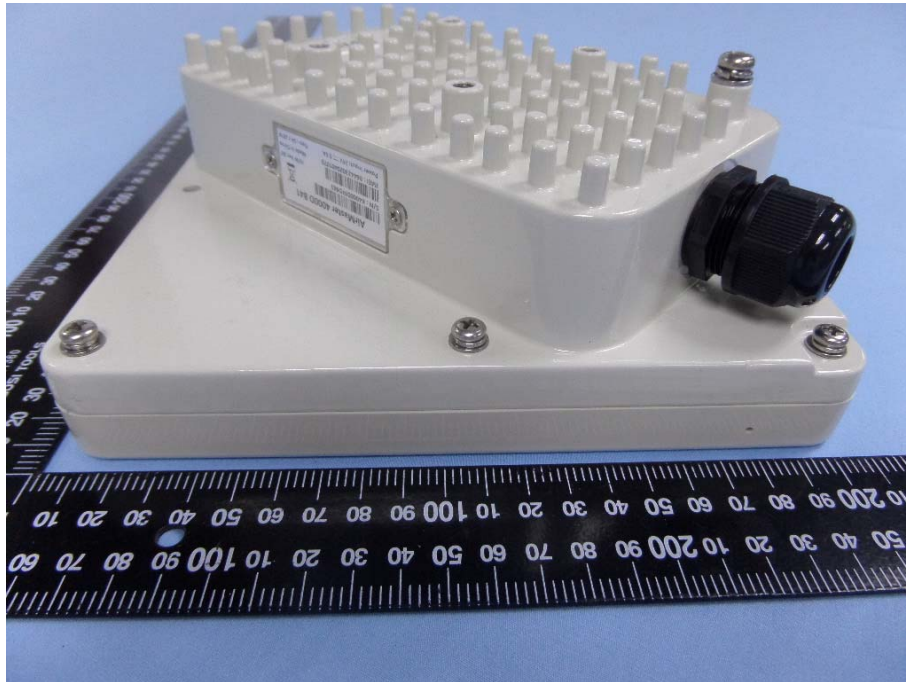
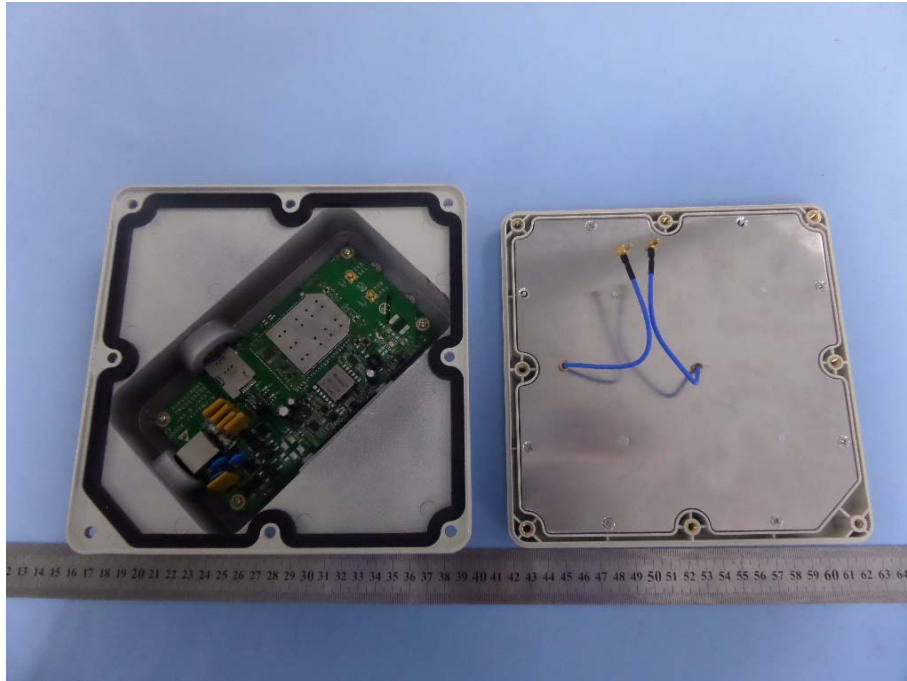
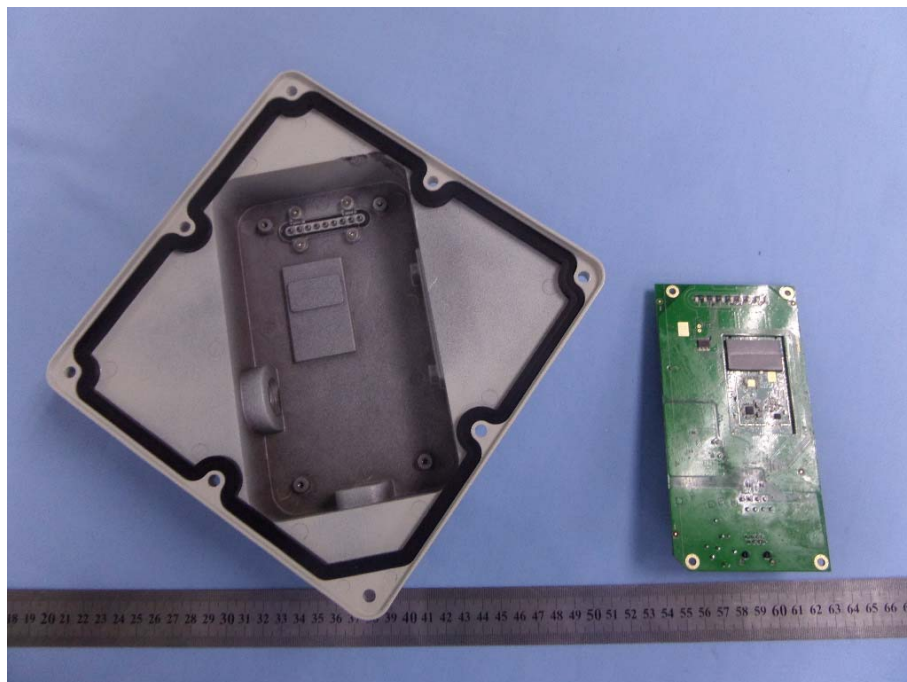
EUT View 7

EXHIBIT 3 - EUT INTERNAL PHOTOGRAPHS

EUT Housing and Board View 1



EUT Housing and Board View 2



Component View 1

LTE Ant 0 port.

LTE Ant 1 port.

AirMaster 4000D
Layer: 4, Ver: A2
0526000242
140623S506

Minerva
MD1711W
• 1546V

TX1
RX1

TX0
RX0

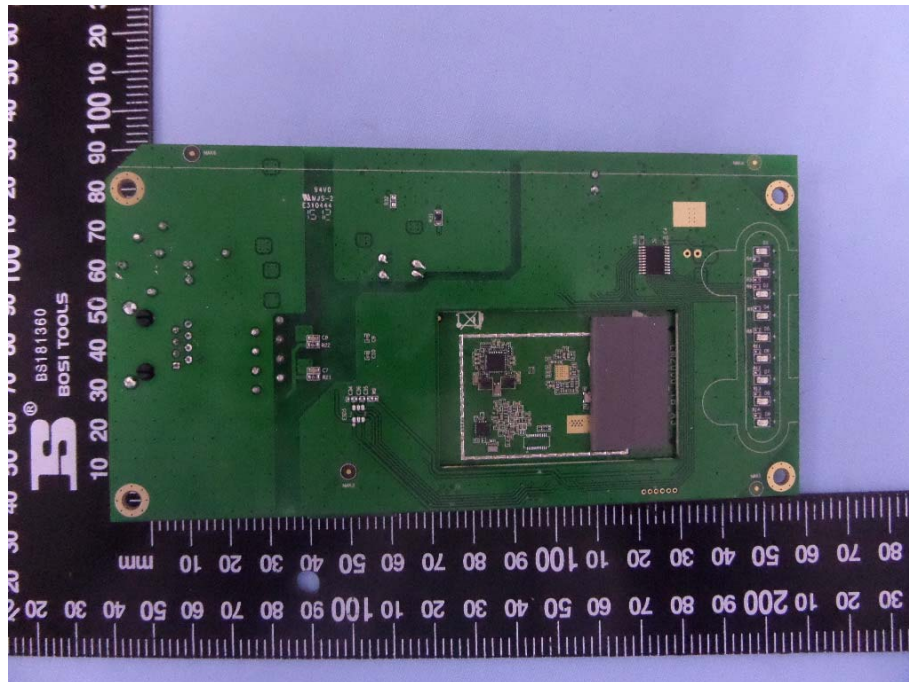
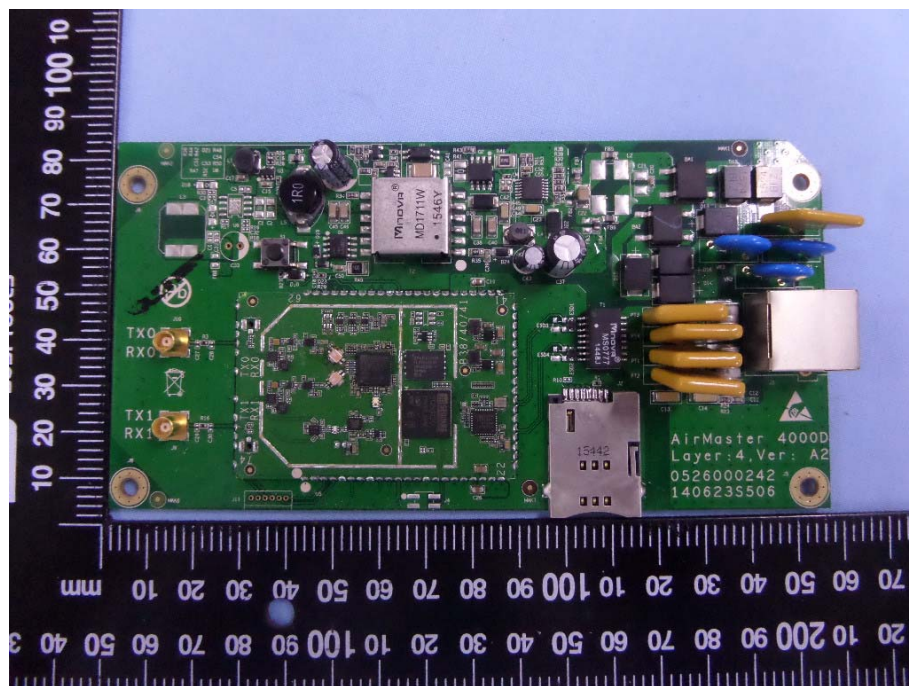
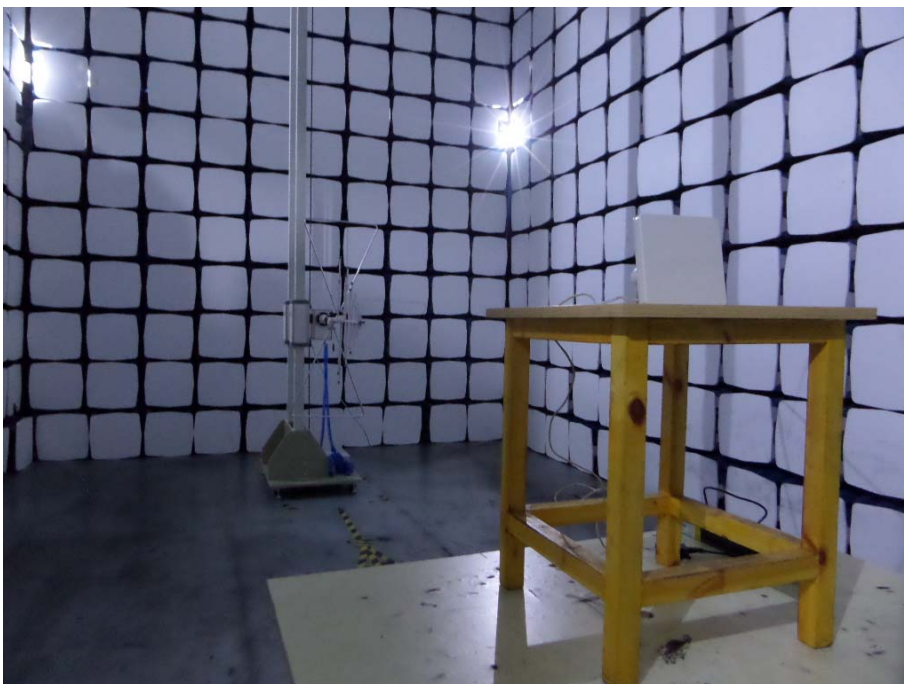
Solder Board-Component View 2**Solder Board-Component View 3**

EXHIBIT 4 - TEST SETUP PHOTOGRAPHS

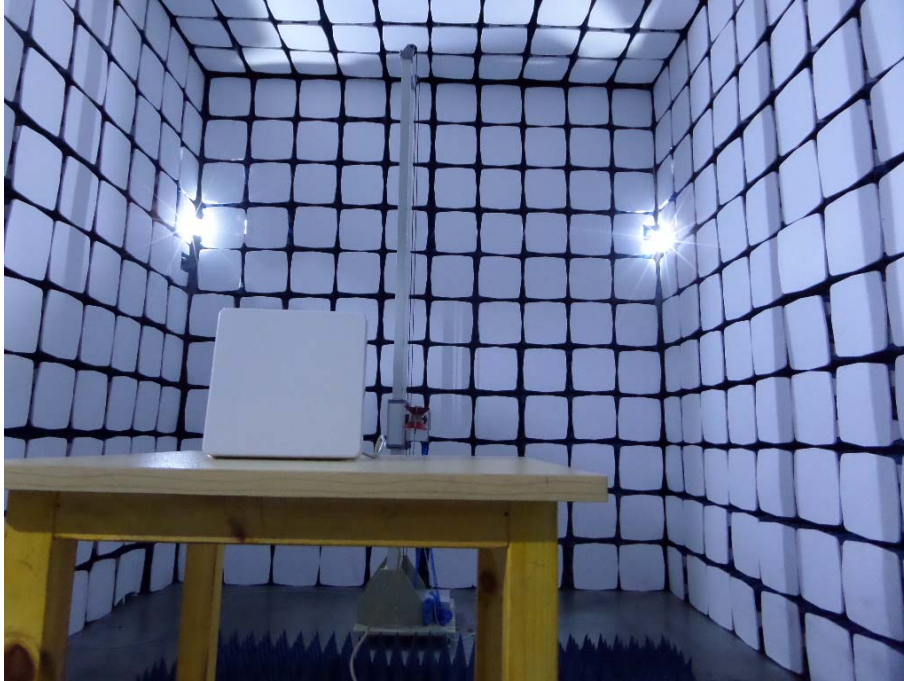
Spurious Radiation Test Setup (9kHz to 30MHz)



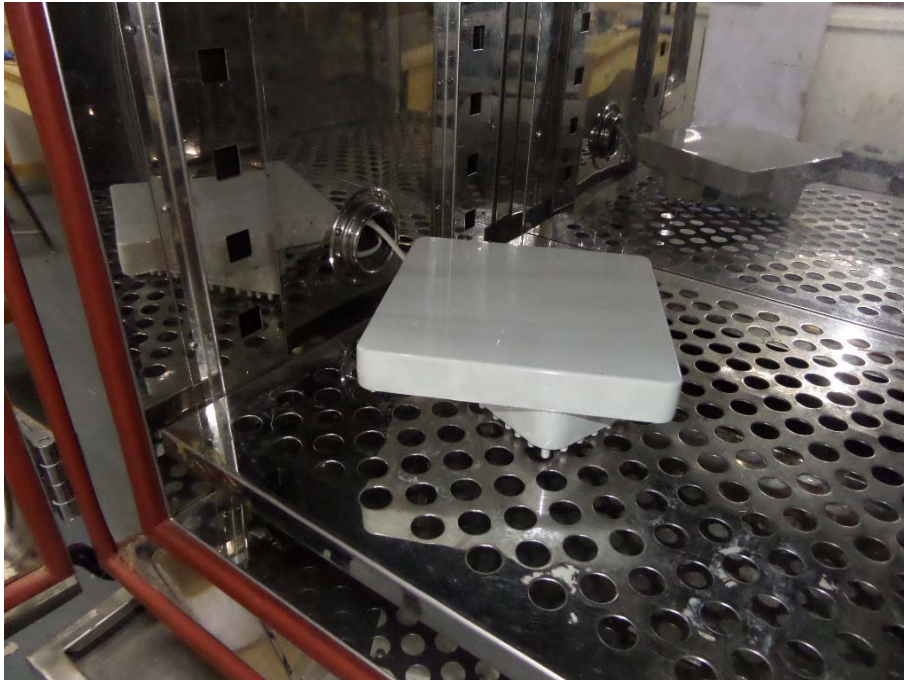
Spurious Radiation Test Setup (30MHz to 1G)



Spurious Radiation Test Setup (Above1G)



Extreme Condition Test Setup



Mobile Communication Test Setup



EXHIBIT 5 - USERS MANUAL

Information to Users

According to the FCC Part 15.19, 15.21, and 15.105 rules, for this EUT, the instructions or operation manual furnished the user shall include the following or similar statement, placed in a prominent location in the text of the manual:

FCC RF Exposure Information and Statement

The SAR limit of USA (FCC) is 1.6 W/kg averaged over one gram of tissue. Device types Tablets (FCC ID: 2AGMA-SGB1G) has also been tested against this SAR limit. The highest reported SAR values for head, body-worn accessory, and wireless router(hotspot) are 0.323W/kg, 0.814W/kg, and 1.268W/kg respectively. This device was tested for typical body-worn operations with the back of the handset kept 10mm from the body. To maintain compliance with FCC RF exposure requirements, use accessories that maintain a 10mm separation distance between the user's body and the back of the handset. The use of belt clips, holsters and similar accessories should not contain metallic components in its assembly. The use of accessories that do not satisfy these requirements may not comply with FCC RF exposure requirements, and should be avoided.

FCC Warning

This device complies with Part 15 of the FCC Rules. Operation is subject to the following two conditions:

(1) This device may not cause harmful interference, and (2) this device must accept any interference received, including interference that may cause undesired operation.

NOTE 1: This equipment has been tested and found to comply with the limits for a Class B digital device, pursuant to part 15 of the FCC Rules. These limits are designed to provide reasonable protection against harmful interference in a residential installation. This equipment generates, uses and can radiate radio frequency energy and, if not installed and used in accordance with the instructions, may cause harmful interference to radio communications. However, there is no guarantee that interference will not occur in a particular installation. If this equipment does cause harmful interference to radio or television reception, which can be determined by turning the equipment off and on, the user is encouraged to try to correct the interference by one or more of the following measures:

- Reorient or relocate the receiving antenna.
- Increase the separation between the equipment and receiver.
- Connect the equipment into an outlet on a circuit different from that to which the receiver is connected.
- Consult the dealer or an experienced radio/TV technician for help.

NOTE 2: Any changes or modifications to this unit not expressly approved by the party responsible for compliance could void the user's authority to operate the equipment.