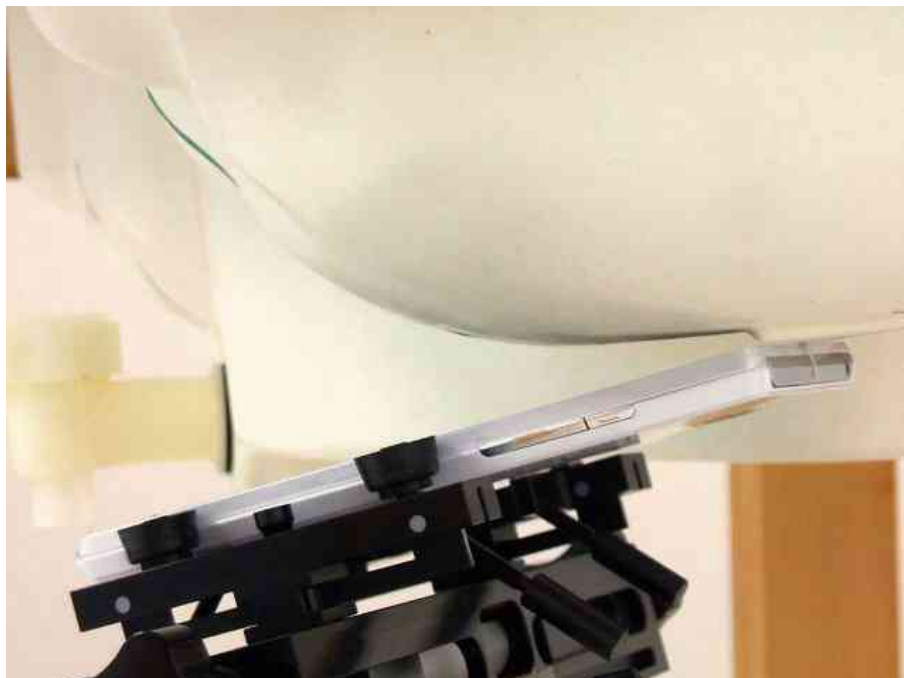


## 15 Test Setup Photographs

### 15.1 Left Head



– Cheek-Touch Position –



– Ear-Tilt Position –

## 15.2 Right Head



– Cheek-Touch Position –



– Ear-Tilt Position –

### 15.3 Body-worn Accessory and Hotspot mode



– Rear –



– Front –



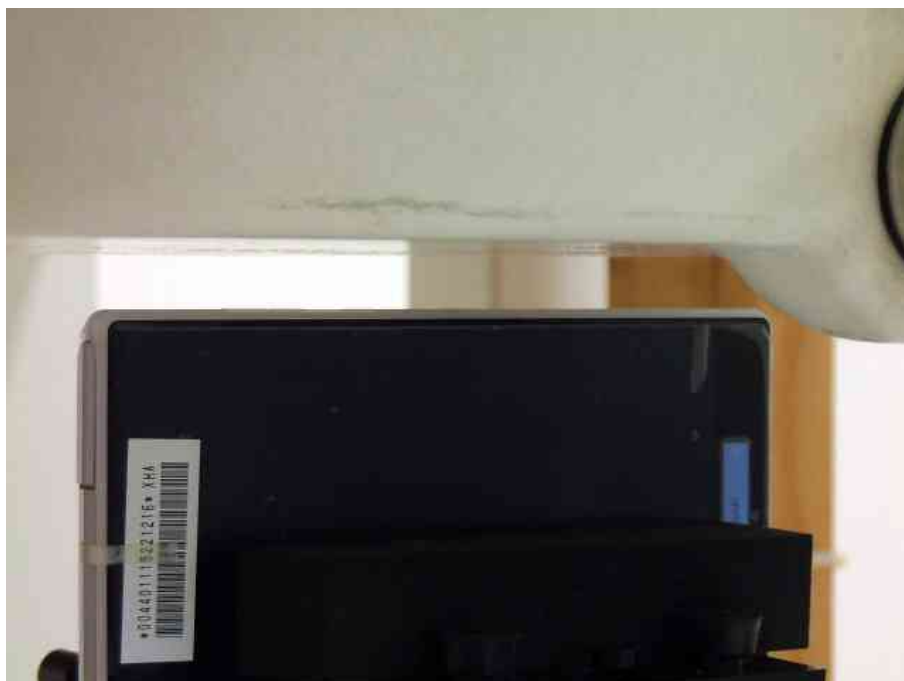
– Top Edge –



– Bottom Edge –



– Left Edge –



– Right Edge –