



Car Multimedia Player

XA-M628B

USER MANUAL

Table of contents

Precautions	2
Installation	3
General Features	3
Wiring	4
General Operation.....	5
Troubleshooting	6
Systematic Parameter	6



WARNING

1. Only connect the unit to a DC 12V power supply with negative grounding. If you connected to the car of 24V, it'll be burned. (Note: Only the panel label with 24V, then it can be used in the car of 24V power supply.)
2. When the machine is in a state of abnormal during the operation, you need to use a pointed object to press the key of "RES"(on the panel), then it will be reset and in factory state .
3. Never install the unit where the operation for safety driving is restrained.
4. Never use the video display function in the front when driving to prevent the violation of laws regulation and also to reduce the risk of traffic accident except using for rear view video camera .
5. Never expose the unit, amplifier, speakers to moisture or water to prevent electronic sparks or fires .
6. Please do not change the fuse in the power cord without professional guidance; improper fuse may cause damage to this using unit or even cause fire .
7. When the temperature is too high or too low in the car, please adjust the temperature firstly, and then use this machine .

Precautions

1. When the interior of the car is extremely cold and the unit is used soon after switching on the heater, moisture may form on the optical parts of the player and proper playback may not be possible. If moisture forms, wipe it off with a soft cloth. If moisture forms on the optical parts of the unit, do not use the unit for about one hour. The condensation will disappear naturally allowing normal operation.
2. Driving on extremely bumpy or rough roads can cause the unit to skip during playback.
3. This unit uses precision parts and components for its operation. In the event that trouble arises, never open the case, disassemble the unit, or lubricate the rotating parts. Contact your service center

FCC Warning

This device complies with part 15 of the FCC Rules. Operation is subject to the following two conditions:(1) This device may not cause harmful interference, and (2) this device must accept any interference received, including interference that may cause undesired operation.

Any Changes or modifications not expressly approved by the party responsible for compliance could void the user's authority to operate the equipment.

This equipment has been tested and found to comply with the limits for a Class B digital device, pursuant to part 15 of the FCC Rules. These limits are designed to provide reasonable protection against harmful interference in a residential installation. This equipment generates uses and can radiate radio frequency energy and, if not installed and used in accordance with the instructions, may cause harmful interference to radio communications. However, there is no guarantee that interference will not occur in a particular installation. If this equipment does cause harmful interference to radio or television reception, which can be determined by turning the equipment off and on, the user is encouraged to try to correct the interference by one or more of the following measures:

- Reorient or relocate the receiving antenna.
- Increase the separation between the equipment and receiver.
- Connect the equipment into an outlet on a circuit different from that to which the receiver is connected.
- Consult the dealer or an experienced radio/TV technician for help.

FCC RF exposure statement:

The equipment complies with FCC radiation exposure limits set forth for an uncontrolled environment. This equipment should be installed and operated with minimum distance between 20cm the radiator your body.

Installation

Please have it professionally installed and refer to the following diagram description:

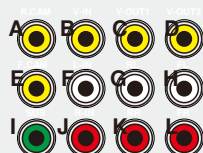
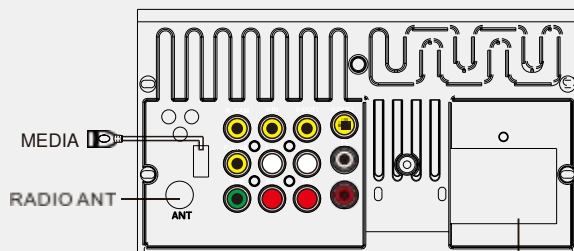
1. Please install the unit in a proper place, connect the unit and refer to the diagram, and test it to make sure it works well or not.
2. Please wrap the connection wires with insulation tape to ensure complete wiring after testing well.
3. Please bend the hook of metal 1, and insert the metal to instrument panel then install it.
4. Put the unit into metal hook unit to lock it.

General Features

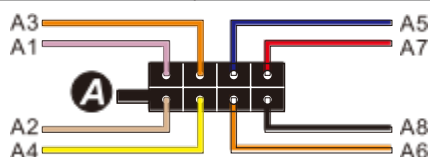
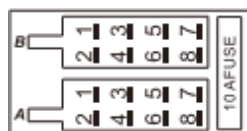
6.5" Double-Din Touch Screen Receiver

- 6.5 Inch Double din Touch Screen Receiver
- High Resolution
- 1080P Video Format
- Supports Audio in a Variety of Formats
- Supports Video in a Variety of Formats
- MOSFET Amplifier: 60 Watts X 4 MAX POWER OUTPUT
- FM Range: 87.5MHz~107.9MHz
- With Remote Control
- Power-off with auto-memory unction
- Clock Function
- Mute Function
- Wireless Streaming Functions
- Aux In Function
- Rearview Camera Function
- Video input Function

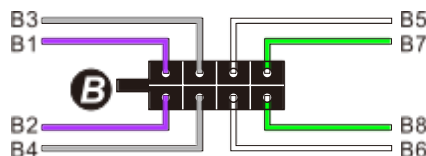
Wiring- Back Panel:



- A. REAR CAM INPUT
- B. VIDEO INPUT
- C. VIDEO OUTPUT1
- D. VIDEO OUTPUT2
- E. FRONT CAM INPUT
- F. LEFT AUDIO INPUT
- G. REAR LEFT AUDIO OUTPUT
- H. FRONT LEFT AUDIO OUTPUT
- I. SUBWOOFER OUTPUT
- J. RIGHT AUDIO INPUT
- K. REAR RIGHT AUDIO OUTPUT
- L. FRONT RIGHT AUDIO OUTPUT





A1: Parking Sensor Control Wires +12V	Pink
A2: Parking Single Check	Brown
A3: KEY	Orange/Black
A4: B+	Yellow
A5: Power Antenna/amp lifier Turn On	Blue
A6: Head Lamp	Orange
A7: ACC	Red
A8: GND	Black



B1: Right Rear Speaker+	Purple
B2: Right Rear Speaker-	Purple/Black
B3: Right Front Speaker+	Gray
B4: Right Front Speaker-	Gray/Black
B5: Left Front Speaker+	White
B6: Left Front Speaker-	White/Black
B7: Left Rear Speaker+	Green
B8: Left Rear Speaker-	Green/Black

⚠ Please check the speaker line carefully before installation. If any grounding or touching, please connection again, otherwise the unit will be burned.

General Operation

1. When use reversing rear view function, reversing video signal from the corresponding port input connection back line, when reversing will automatically switch to reversing visual state .
2. Audio / Video input (Optional)Connect Audio / Video lines, press Mode can select AUX-2 state.
3. Operation of Wireless Streaming Function
First, open the Wireless Connectivity function on your phone, and then find the name of the model and pair your device using the password "0000", after your device has been paired successfully, the symbol will turn green. When calls come in, it will automatically connect, press  to answer the phone, and press  to decline/hang up the phone.

Troubleshooting

1. If the unit couldn't boot up, please check whether the connection of the power of positive and negative is right, on the other hand, check whether the fuse is burned. It may be better to send us photos to show in order to solve the problem.
2. Black screen or shutdown automatically. It may have lost the software, so please check the date of production on the keypad. We can provide the right software to update after we know the date of production.
3. No sound. Check wiring diagram, make sure the connection is right.
4. The button doesn't work. Check whether the keys are stuck.
5. The radio doesn't work. Check whether the connection of the radio antenna is correct.
6. Search station automatically and couldn't stop. The local radio signal may be too weak. Try searching for the station manually.

systematic parameter

specifications

working voltage: direct current 12V

working voltage range: 10.8V-16V

Maximum working electronic current: 10A

Installation angle: less than 30 degree
tilted the front side and back side

Max Power output: 4X60 W

impedance 4ohm

SNR: 70dBA

Frequency Response: 20HZ-20KHZ

video

Standards: NTSC, PAL (Auto recognition)

Output: 1 Vp-p(75ohm)

Input: 1Vp-p(75ohm)

FM Radio

Frequency modulation

87.5MHZ ~ 107.9MHZ

Flexibility(-30dB): 10dBU

SNR(-50dB): 15dBU

Frequent sound range

30Hz~15KHz (+3dB)

Display

Screen type: TFT

Response time: up=30 millisecond,

Down=50 millisecond

Angle range: depression angle=65

elevation angle=40°>

Left vision=65 right vision=65

Environment temperature

Operation temperature: -20~+70°C

Maintenance temperature: -30°C~80°C

Operating humidity: 45%~+80%°C
(relative humidity)

Maintenance humidity: 30%~90%
(relative humidity)