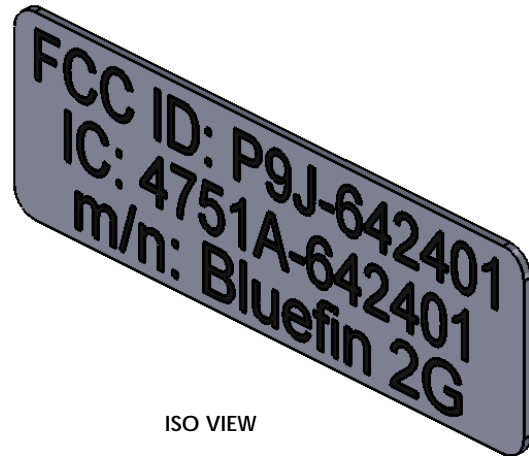


FCC ID: P9J-642401
IC: 4751A-642401
m/n: Bluefin 2G

.75 [19.05]

.25 [6.35]

R.03 [0.76]





ISO VIEW

NOTES: (UNLESS OTHERWISE SPECIFIED)

1. MATERIAL: 3M 7871GLOSS WHITE WITH CLEAR MATTE, BLACK INK FOR PRINTED TEXT, 3M 350 PERMANENT ADHESIVE ON 55#DK RELEASE LINER.
2. FINISH: NONE
3. PART NUMBER AND REVISION MUST BE PERMANENTLY APPLIED TO PACKAGING.
4. MUST BE PB FREE AND FULLY ROHS COMPLIANT TO DIRECTIVE 2002/95/EC. VENDOR MUST BE ABLE TO SUPPLY SIGNED DECLARATION OF CONFORMANCE.

PROPRIETARY AND CONFIDENTIAL
THE INFORMATION CONTAINED IN THIS
DRAWING IS THE SOLE PROPERTY OF ABB.
TROPUS WIRELESS RESEARCH CENTER. ANY
REPRODUCTION IN PART OR AS A WHOLE
WITHOUT THE WRITTEN PERMISSION OF
ABB, TROPUS WIRELESS RESEARCH CENTER,
IS PROHIBITED.

		UNLESS OTHERWISE SPECIFIED:		DRAWN		NAME	DATE	 TROPUS WIRELESS RESEARCH CENTER TITLE: LABEL, FCC ID, P9J-642401 & IC: 4751A-642401 SIZE DWG. NO. REV C 152356-01 B0 SCALE: 10:1 WEIGHT: SHEET 1 OF 2
		DIMENSIONS ARE IN INCHES TOLERANCES: FRACTIONAL: ± ANGULAR: MACH ± BEND ± TWO PLACE DECIMAL ±0.02 THREE PLACE DECIMAL ±0.005		CHECKED		REA	8/12/2014	
				ENG APPR				
				MFG APPR				
				D.A.				
		INTERPRET GEOMETRIC TOLERANCING PER:		PROJECTION: 3RD ANGLE				
		MATERIAL:						
		FINISH						
NEXT ASSY	USED ON	APPLICATION		DO NOT SCALE DRAWING				

FCC ID: P9J-642401
IC: 4751A-642401
m/n: Bluefin 2G

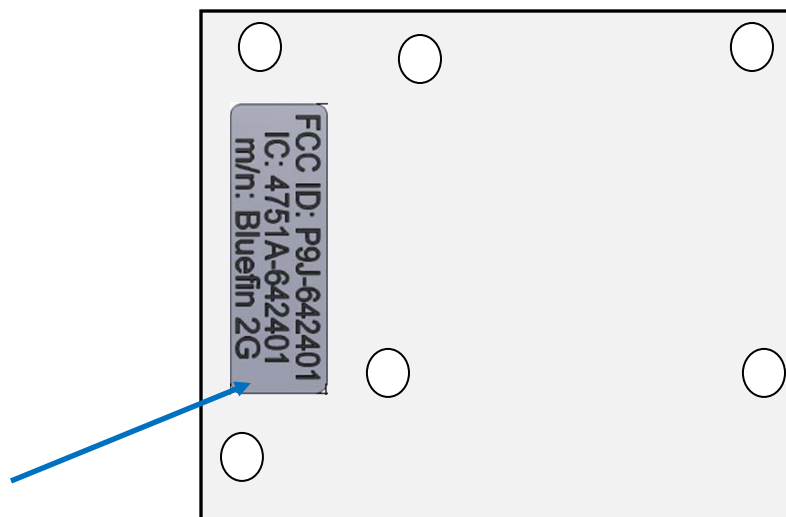
(.250[6.35])

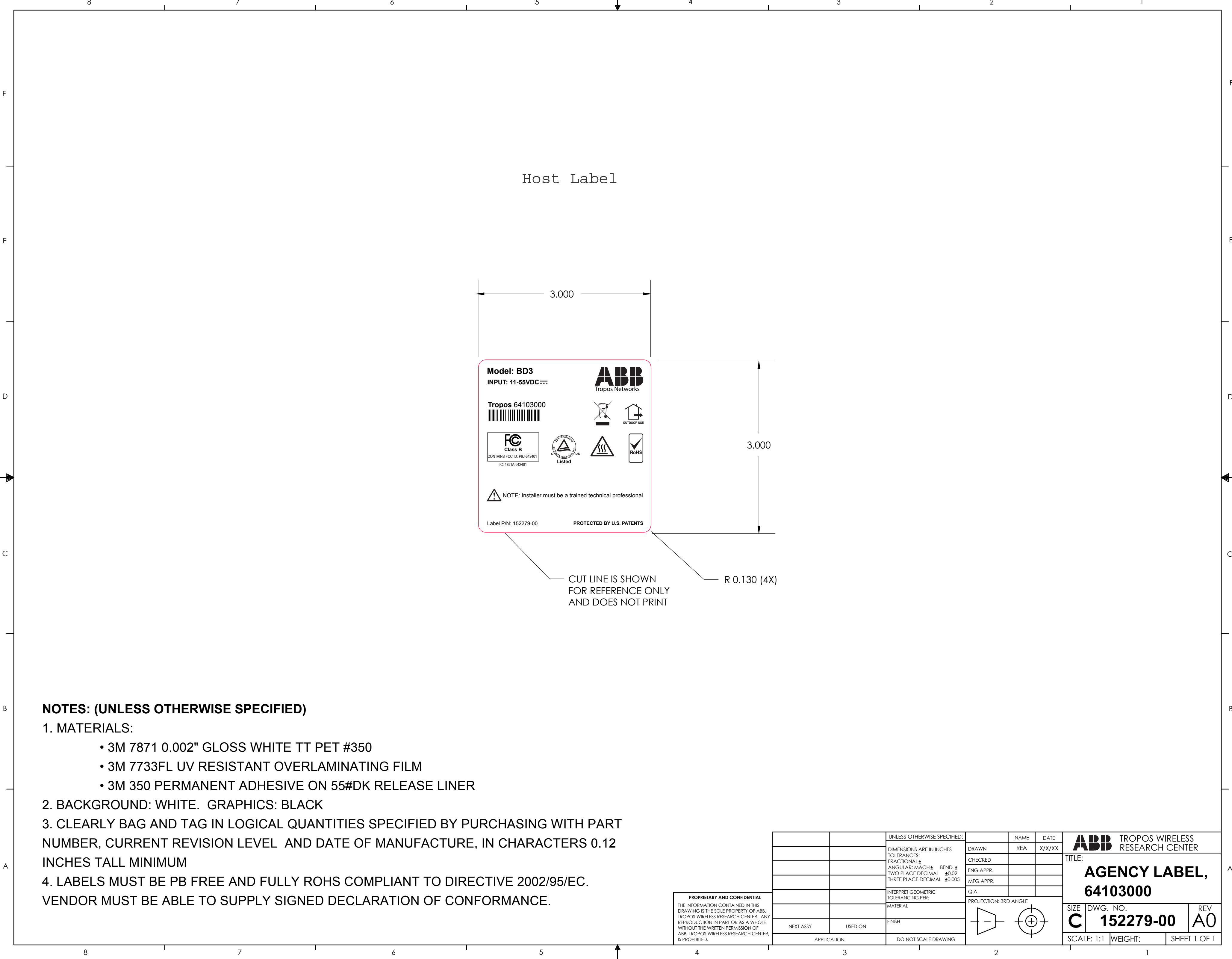
.750[19.05]
REDUCE TO DIMENSION

USE TO HELP GENERATE ARTWORK
152356-01, REV B0
CHARACTERS MUST BE FILLED SOLID, BLACK

ABB TROPOS WIRELESS
RESEARCH CENTER

Label Location





Host Label

3.000

3.000

CUT LINE IS SHOWN
FOR REFERENCE ONLY
AND DOES NOT PRINT

R 0.130 (4X)

NOTES: (UNLESS OTHERWISE SPECIFIED)

1. MATERIALS:

- 3M 7871 0.002" GLOSS WHITE TT PET #350
- 3M 7733FL UV RESISTANT OVERLAMINATING FILM
- 3M 350 PERMANENT ADHESIVE ON 55#DK RELEASE LINER

2. BACKGROUND: WHITE. GRAPHICS: BLACK

3. CLEARLY BAG AND TAG IN LOGICAL QUANTITIES SPECIFIED BY PURCHASING WITH PART NUMBER, CURRENT REVISION LEVEL AND DATE OF MANUFACTURE, IN CHARACTERS 0.12 INCHES TALL MINIMUM

4. LABELS MUST BE PB FREE AND FULLY ROHS COMPLIANT TO DIRECTIVE 2002/95/EC. VENDOR MUST BE ABLE TO SUPPLY SIGNED DECLARATION OF CONFORMANCE.

PROPRIETARY AND CONFIDENTIAL
THE INFORMATION CONTAINED IN THIS
DRAWING IS THE SOLE PROPERTY OF ABB.
TROPPOS WIRELESS RESEARCH CENTER. ANY
REPRODUCTION IN PART OR AS A WHOLE
WITHOUT THE WRITTEN PERMISSION OF
ABB, TROPPOS WIRELESS RESEARCH CENTER,
IS PROHIBITED.

		UNLESS OTHERWISE SPECIFIED:		NAME	DATE
		DIMENSIONS ARE IN INCHES	DRAWN	REA	X/X/XX
		TOLERANCES:	CHECKED		
		FRACTIONAL \pm	ENG APPR.		
		ANGULAR: MACH \pm BEND \pm	MFG APPR.		
		TWO PLACE DECIMAL ± 0.02			
		THREE PLACE DECIMAL ± 0.005			
		INTERPRET GEOMETRIC	Q.A.		
		TOLERANCING PER:	PROJECTION: 3RD ANGLE		
		MATERIAL			
		FINISH			
NEXT ASSY	USED ON				
APPLICATION		DO NOT SCALE DRAWING			

ABB TROPPOS WIRELESS RESEARCH CENTER		
TITLE:		
AGENCY LABEL, 64103000		
SIZE	DWG. NO.	REV
C	152279-00	A0
SCALE: 1:1	WEIGHT:	SHEET 1 OF 1