

answers²

EasyGuide

Pocket LOOX 400 Series

English



FUJITSU COMPUTERS
SIEMENS

Are there ...

... any technical problems or other questions which you would like to be clarified?

Please contact:

- your sales partner
- your sales outlet

Further information can be found in the "Safety and Ergonomics" and "Warranty" manuals.

The latest information on our products, tips, updates, etc., can be found on the internet under:

<http://www.fujitsu-siemens.com>

Distributed by
Fujitsu Siemens Computers GmbH

Order No.: **A26391-K150-Z120-1-7619**

AG 0304 03/04

Pocket LOOX 400 Series

Introduction

Information before you start

Software overview

Operating the Pocket PC

FSC SpeedMenu - quickly operating Pocket PC

Configuring the Pocket PC

Connecting and networking the Pocket PC with other devices

Troubleshooting and tips

Technical data

Index

March 2004 edition

Adobe and Acrobat are trademarks of Adobe systems Incorporated and may be protected in certain countries.

Intel is a registered trademark, XScale is trademark of Intel Corporation, U.S.A.

Microsoft, Windows and ActiveSync are registered trademarks of the Microsoft Corporation.

Windows Mobile is a trademark of Microsoft Corporation.

The SD Logo is a trademark of Secure Digital.

The Bluetooth trademarks are the property of Bluetooth SIG, Inc., U.S.A. licensed for Fujitsu Siemens Computers GmbH.

All other trademarks referenced are trademarks or registered trademarks of their respective owners, whose protected rights are acknowledged.

Copyright © Fujitsu Siemens Computers GmbH 2004

All rights, including rights of translation, reproduction by printing, copying or similar methods, in part or in whole, are reserved.

Offenders will be liable for damages.

All rights, including rights created by patent grant or registration of a utility model or design, are reserved.

Delivery subject to availability. Right of technical modification reserved.

Contents

Your Pocket LOOX.....	1
Information before you start	3
To make things clear	3
Important notes	4
Safety notes.....	4
Energy saving.....	5
Disposal and recycling.....	5
CE marking.....	6
European Union Notice.....	6
Battery storage	8
Cleaning Pocket PC.....	8
Software overview	9
Operating the Pocket PC.....	11
Overview of operating elements and connections	12
Initial start-up	13
Inserting battery	14
Connecting PSC11R-050 power adapter	15
Installing ActiveSync on your PC/notebook	16
First data synchronisation between the Pocket PC and the PC/notebook	17
Starting Pocket PC the first time	18
Switching Pocket PC off and on.....	19
Switching Pocket PC off and on during normal use	19
Switching on and off with soft reset (warm boot).....	20
Resetting Pocket PC to delivered state.....	21
Using standard operating elements	22
Using the pen	22
Using navigation key.....	22
Using the application buttons.....	23
Switching display lighting off and on	23
Make sound recordings	24
Inserting and removing memory cards	25
Inserting memory card	25
Removing memory card.....	26
On the road with the Pocket PC.....	26
Charging the battery	27
Optimising battery operating time	30
Monitoring battery charge level	30
Transporting Pocket PC	31
Information on travelling.....	31
Synchronising data with ActiveSync	32
Connecting Pocket PC to PC/notebook	32
Synchronising data with new PC/notebook	33
Backing up data with FSC Backup.....	33
Backup	33
Restoring.....	34
Using optional cradle	34
Selecting location for cradle.....	34
Using cradle for data synchronisation	35

FSC SpeedMenu - quickly operating Pocket PC	37
Operating FSC SpeedMenu	37
Programme structure	38
Main and quick menu	38
Editing FSC SpeedMenu	40
Tips and tricks	42
Configuring the Pocket PC	43
Optimising energy management	43
General information on energy management	43
Monitoring battery charge level	44
Using energy-saving functions	44
Adjusting menus	46
Password protection under Pocket PC 2003	46
Changing time	47
Using alarm functions	48
Connecting and networking the Pocket PC with other devices	49
Safety precautions when using radio components	49
Wireless data transfer with infrared interface	50
Wireless communication with Bluetooth (optional)	50
Selecting location for Bluetooth operation	51
Activating and deactivating Bluetooth	51
Wireless connection via Wireless LAN (optional)	51
Troubleshooting and tips	53
Installing new software	53
Date or time of the Pocket PC is incorrect	53
The display of the Pocket PC remains dark	53
The information on the display of the Pocket PC is difficult to read	54
The Pocket PC switches off	54
The Pocket PC does not start after switch on	54
The Pocket PC stops working	55
The battery discharges too quickly	55
The Suspend/Resume button does not respond properly	55
No sound or minimal volume	56
Contact with hotline/help desk	56
Technical data	57
Pocket PC	57
Battery	58
PSC11R-050 power adapter	58
Index	59

Your Pocket LOOX...

... is equipped with the Office applications *MS-Word*, *Excel* and *Outlook*. In *Outlook* you can not only receive and send e-mails, you can also manage your appointments and let me remind you of the things you have to do. You can access names, e-mail addresses and telephone numbers while you are away from your home or office. You can store notes in written form or verbally as with a dictation device. Memory cards ensure that even large amounts of data can be carried along reliably.

In the office you can then effortlessly transfer all your data and newly created documents to your notebook or PC. Install *ActiveSync* on your notebook or PC, connect the Pocket LOOX to your notebook or PC and you can synchronise your data.

Why don't you read your favourite book quite comfortably on the display or use the MP3 player while you're on the road. Insert the memory card of your digital camera in the slot and you can view the photos you just took on the display.

With Bluetooth, the infrared interface and the integrated Wireless LAN (depending on the model), you can also connect to other devices in your office and on the go without bothersome cables. For example, thanks to Bluetooth you can access the Internet without any cables with your Bluetooth-capable mobile phone. With the *Pocket Internet Explorer* you can visit both web and WAP pages.

The following documentation contains additional information on your Pocket PC and the *Windows Mobile* operating system:

- in the manuals "Safety and Ergonomics" and "Warranty"
- in the "Getting Started" manual
- in the help on your Pocket PC.

Information before you start

To make things clear

The following symbols are used in this manual:



Pay particular attention to texts marked with this symbol. Failure to observe this warning may endanger your life, destroy the system, or lead to loss of data. Failure to follow the instructions may lead to loss of data, invalidate your warranty, destroy the Pocket PC, or endanger your life.



Indicates important information which is required to use the system properly.



Text which follows this symbol describes activities that must be performed in the order shown.

This font

indicates screen outputs.

This font

indicates programme names, commands, or menu items.

"Quotation marks"

indicate names of chapters, data carriers, and terms that are being emphasised.

Important notes

This chapter contains information on the proper, safe use of your Pocket PC. Please be sure to observe the following safety precautions to prevent damage to your device, data loss or damage to your health. The information on saving energy, charging the battery and cleaning your Pocket PC are very important for proper operation of the Pocket PC. To protect the environment, we urgently ask that you observe the disposal and recycling information.

Keep this operating manual together with the device. If you pass on the device to a third party, please also pass on the operating manual.

Safety notes



Pay attention to the information provided in the "Safety and Ergonomics" manual and in the following safety notes.

- Your Pocket PC is a technical device that contains small parts. Therefore, please keep your Pocket PC out of reach of children under 36 months of age.
- During installation and before operating the device, observe the instructions on environmental conditions in the "Operating the Pocket PC" and "Technical data" chapter.
- Connect the power adapter plug to the PSC11R-050 power adapter. The power adapter plug must never be plugged into an electrical outlet without the PSC11R-050 power adapter.
- The included PSC11R-050 power adapter complies with the requirements of the country in which you purchased the Pocket PC. Make sure the PSC11R-050 power adapter is approved for the country in which it is used.
- The PSC11R-050 power adapter may only be connected to an electrical outlet when the Pocket PC or the cradle is connected to the PSC11R-050 power adapter.
- Do not use the PSC11R-050 power adapter for other devices.
- Do not use power adapters which are not specially approved for this Pocket PC.
- You may only operate the Pocket PC with the PSC11R-050 power adapter if the nominal voltage of the PSC11R-050 power adapter (100 V to 240 V) matches the local mains voltage.
- During transport and on trips, observe the safety precautions in the sections "Transporting Pocket PC" and "Information on travelling".

This Pocket PC complies with the relevant safety regulations for data processing equipment. If you have questions as to whether you can set up the optional cradle and the Pocket PC in the intended environment, please contact your sales point or our hotline/help desk.

Energy saving

Switch off your Pocket PC with the Suspend/Resume button when you don't need it. In the system settings you can specify after how many minutes the Pocket PC switches off when it is not used (see the "Configuring the Pocket PC" chapter).

While you are working, and if the ambient light conditions permit, you can reduce the display brightness or even switch off the display lighting completely. The Pocket PC is equipped with a transfective display that reflects incident light and enables you to work even under unfavourable lighting conditions.

Switching off and on of the display lighting can also be specified in the system settings of your Pocket PC (see the chapter "Configuring the Pocket PC").

If you use the energy saving functions, you can work with the Pocket PC longer before having to recharge the battery. We particularly recommend that you reduce the display brightness to effectively save energy and therefore appreciably increase the time you can work with the battery.

Disposal and recycling


Do not throw batteries or accumulators into the household waste.

Our devices are mostly produced of materials that can be turned over for proper recycling. The device may be taken back after use to be recycled, provided that it is returned in a condition that is the result of normal use. Any components not reclaimed will be disposed of in an environmentally acceptable manner. To give back a device please take advantage of your country's disposal and recycling possibilities.

Further information about country-specific disposal and recycling possibilities can be found on the following website www.fujitsu-siemens.com/recycling.

If you have any questions on disposal, please contact your local office or our Help Desk.

CE marking

 The shipped version of this device complies with the requirements of the EC Guidelines 73/23/EEC.

This equipment complies with the requirements of Directive 1999/5/EC of the European Parliament and Commission from 9 March, 1999 governing Radio and Telecommunications Equipment and mutual recognition of conformity.

Bluetooth is approved for use in Austria, Belgium, Denmark, Germany, Finland, France, Greece, Great Britain, Ireland, Iceland, Italy, Liechtenstein, Luxembourg, the Netherlands, Norway, Portugal, Sweden, Switzerland and Spain.


To all customers:

If you are not sure whether the use of Bluetooth is permitted in your country, please contact the corresponding supervisory authorities.



The user is responsible for radio interference that may occur when operating the device.

European Union Notice

 0984 

Products bearing the CE marking comply with the R&TTE Directive (1999/5/EC), EMC Directive (89/336/EEC), and the Low Voltage Directive (73/23/EEC) issued by the Commission of the European Community. CE compliance of this computer is valid only if powered with an Fujitsu Siemens Computers-provided CE marked AC Adapter.

Compliance with these directives implies conformity to the following European Norms (in parentheses are the equivalent international standards and regulations):

- EN 55022 (CISPR 22) — Electromagnetic Interference
- EN 55024 (IEC61000-4-2, 3, 4, 5, 6, 8, 11) — Electromagnetic Immunity
- EN61000-3-2 (IEC61000-3-2) — Power Line Harmonics
- EN61000-3-3 (IEC61000-3-3) — Power Line Flicker
- EN 60950 (IEC 60950) — Product Safety
- ETS 300 328-2 — Technical requirements for 2.4 GHz radio equipment
- EN 301 489-1, -17 — General EMC requirements for radio equipment

The IEEE 802.11b wireless LAN and Bluetooth functionality of this product may be used in the following EU, EU candidate, and EFTA countries: Austria, Belgium, Denmark, Estonia, Finland, Germany, Greece, Hungary, Iceland, Ireland, Italy, Liechtenstein, Lithuania, Luxembourg, Malta, Netherlands, Norway, Portugal, Slovenia, Spain, Sweden, Switzerland, and United Kingdom.

For IEEE 802.11b wireless LAN operation of this product, only a limited band is available in France (Channels 10, 11, 12, and 13 only). l'Autorité de régulation des télécommunications (ART) has special regulations for hotspots allowing other channels, too.

Please check with ART (<http://www.art-telecom.fr>) on this for local rulings and for authorization.

Federal Communications Commission Notice

This equipment has been tested and found to comply with the limits for a Class B digital device, pursuant to Part 15 of the FCC Rules. These limits are designed to provide reasonable protection against harmful interference in a residential installation. This equipment generates, uses, and can radiate radio frequency energy and, if not installed and used in accordance with the instructions, may cause harmful interference to radio communications. However, there is no guarantee that interference will not occur in a particular installation. If this equipment does cause harmful interference to radio or television reception, which can be determined by turning the equipment off and on, the user is encouraged to try to correct the interference by one or more of the following measures:

- Reorient or relocate the receiving antenna
- Increase the separation between the equipment and receiver
- Connect the equipment into an outlet on a circuit different from that to which the receiver is connected
- Consult the dealer or an experienced radio or television technician for help

Modifications

The FCC requires the user to be notified that any changes or modifications made to this device that are not expressly approved by the responsible party for compliance may void the authority to operate the equipment.

Declaration of Conformity for products marked with the FCC logo — United States only

Check whether your package is complete using the illustration on the inner cover and the following list.

This device complies with Part 15 of the FCC Rules. Operation is subject to the following two conditions: (1) this device may not cause harmful interference, and (2) this device must accept any interference received, including interference that may cause undesired operation.

- For questions regarding your product, contact:
Please find the contact information for your country on the attached warranty flyer.
- For questions regarding this FCC declaration, contact:

Fujitsu Siemens Computers Inc.
598 Gibraltar Drive
Milpitas, CA 95035-6315
U.S.A.

Bernd Schrötte-Henning
Phone No.: (408) 571-6051
Fax No.: (408) 571-6196

To identify this product, refer to the Part, Series, or Model number found on the product.

Battery storage

Store the Pocket PC in a fully charged state in a dry environment. If you store the Pocket PC for up to a month, the storage temperature should be between -20°C and +60°C. If you store the Pocket PC for up to three months, the storage temperature should be between -20°C and +45°C. The lower the temperature at which the batteries are stored, the lower is the rate of self-discharge. Avoid leaving your Pocket PC lying in direct sunlight in a car.

Please note that batteries discharge themselves over time. Therefore, recharge the battery of your Pocket PC at regular intervals during the storage period.

Cleaning Pocket PC

- ▶ Switch the Pocket PC off.
- ▶ Pull the PSC11R-050 power adapter out of the electrical outlet.



Do not use any cleaning agents that contain abrasives or may corrode plastic.

Please ensure that no liquid enters the Pocket PC.

Wipe the casing with a dry cloth.

If it is very dirty, you can clean the casing and the display with a damp cloth.

Software overview

In the following table you see which programs are already installed on your Pocket PC and where you can find information on the use and operation of these programs.

Software	Used for	Operating information
<i>PocketWord</i>	For word processing	Help file on Pocket PC
<i>PocketExcel</i>	For spread-sheet functions	Help file on Pocket PC
<i>PocketOutlook</i>	Contacts/calendar//things to do	Help file on Pocket PC
<i>ActiveSync 3,7</i>	For data synchronisation	Help file on the notebook or PC on which you installed <i>ActiveSync</i> .
<i>Pocket Internet Explorer</i>	Browser for websites and WAP sites	Help file on Pocket PC
<i>Microsoft Reader 2.0 for Windows Mobile</i>	For reading eBooks	Help file on Pocket PC
<i>Microsoft Windows Media Player 9 for Windows Mobile</i>	For playing audio and video files	Help file on Pocket PC
<i>MSN Messenger</i>	For online communication	Help file on Pocket PC
<i>FSC SpeedMenu</i>	For fast file and program management; supports one-hand operation	EasyGuide on the Microsoft Companion CD and help file on Pocket PC
Bluetooth connection software	For Bluetooth configuration and operation	Help file on Pocket PC
<i>FSC Backup</i>	Partial and full data backup on external storage modules or in LOOXstore (if available)	Help file on Pocket PC

Operating the Pocket PC

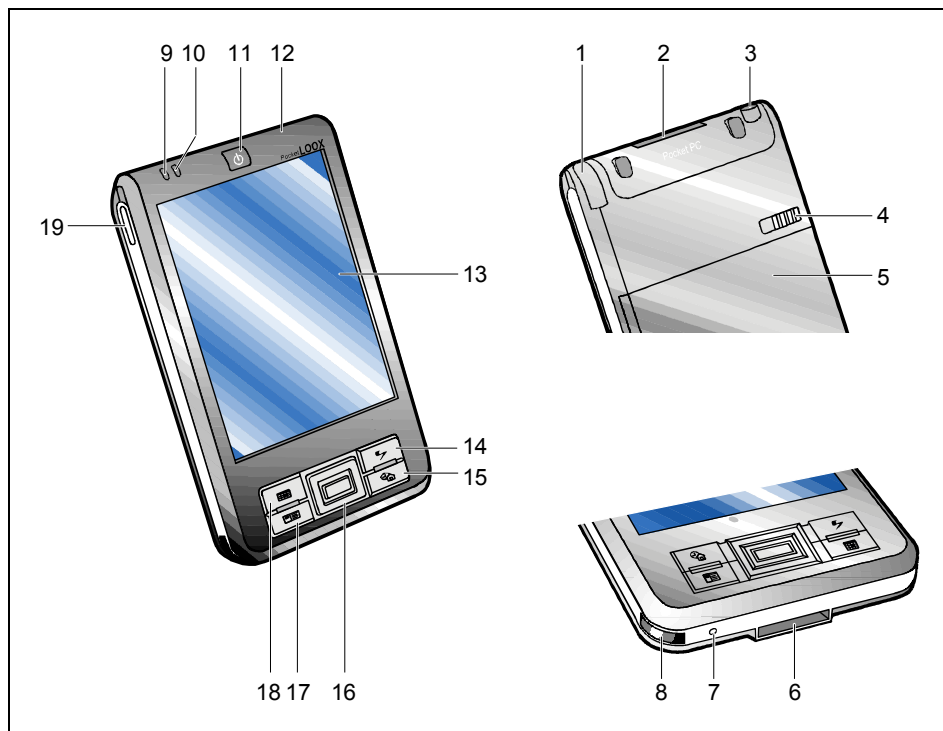
This chapter describes the operating elements of your Pocket PC and how you

- put the Pocket PC into operation the first time
- switch the Pocket PC on and off
- operate the Pocket PC with the stylus
- operate the Pocket PC with the navigation key
- switch the display lighting on and off
- make sound recordings
- use the optional cradle
- synchronise data
- use memory cards



Please take note of the information in the "Important notes" chapter.

Overview of operating elements and connections



- 1 = Stylus
- 2 = Memory card slot
- 3 = Headphones port
- 4 = Locking device
- 5 = Battery compartment cover
- 6 = ActiveSync port
- 7 = Opening for soft reset (warm boot)
- 8 = Infrared interface
- 9 = Wireless indicator
- 10 = Power-on indicator

- 11 = Suspend/Resume button
- 12 = Microphone opening
- 13 = Display
- 14 = FSC Speed button
- 15 = Today button
- 16 = Navigation key
- 17 = Contacts button
- 18 = Calendar button
- 19 = Record button

Initial start-up

In just a few steps your Pocket PC is ready to use the first time.

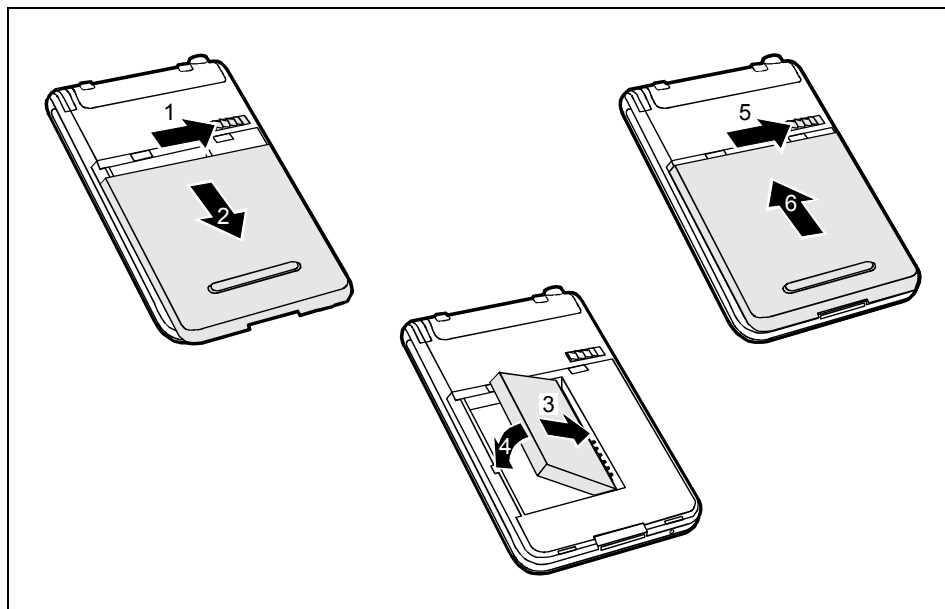


Please follow the sequence of these steps! Before the first data synchronisation between your Pocket PC and your PC/notebook, you must install the program *ActiveSync* on your PC/notebook.

- Insert battery
- Connect PSC11R-050 power adapter
- Install *ActiveSync* on PC/notebook and carry out first data synchronisation
- Start Pocket PC for the first time

You will learn more about the individual steps in the following sections. The explanations in the text refer to several positions on the illustrations of the inner cover.

Inserting battery



- ▶ Slide the locking device (1) in the direction of the arrow and hold it pressed.
- ▶ Pull the cover (2) off the Pocket PC in the direction of the arrow.
- ▶ Lay the battery in the battery compartment (3 + 4). Watch the contact connections.
- ▶ Slide the locking device (5) in the direction of the arrow and hold it pressed.
- ▶ Slide the cover (6) in the direction of the arrow as far as it will go.



The battery is not charged at the time of delivery. Therefore, charge the battery for 12 hours before the first mobile use (see "Connecting PSC11R-050 power adapter" section).

When you replace the battery, an internal backup battery prevents your data from being lost. This backup battery can buffer the data for up to 30 minutes. The buffer time is dependent on the charging level of the backup battery.

Connecting PSC11R-050 power adapter



Connect the power adapter plug to the PSC11R-050 power adapter. The power adapter plug must never be plugged into an electrical outlet without the PSC11R-050 power adapter.

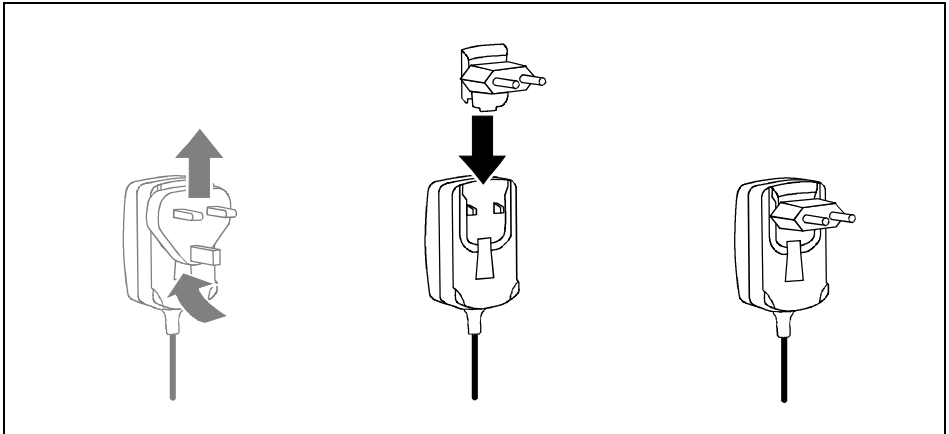
The included PSC11R-050 power adapter complies with the requirements of the country in which you purchased the Pocket PC. Make sure the PSC11R-050 power adapter is approved for the country in which it is used.

The PSC11R-050 power adapter may only be connected to an electrical outlet when the Pocket PC or the cradle is connected to the PSC11R-050 power adapter.

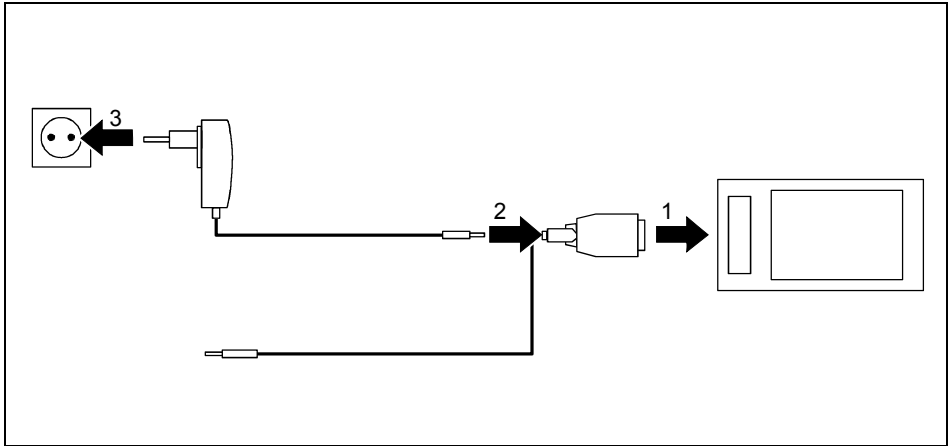
Do not use the PSC11R-050 power adapter for other devices.

Do not use power adapters which are not specially approved for this Pocket PC.

You can connect the PSC11R-050 power adapter to the Pocket PC (for instructions on how to connect the power adapter to the optional cradle, please read the section "Using optional cradle").



- Slide the suitable power adapter plug into the PSC11R-050 power adapter in the direction of the arrow until it engages.



- ▶ Connect the ActiveSync cable (1) to the ActiveSync port on the Pocket PC.
- ▶ Connect the power adapter cable (2) to the DC socket of the ActiveSync cable.
- ▶ Connect the PSC11R-050 power adapter (3) to an electrical outlet.

The installed battery will now be charged. The power-on indicator (number 10 in the section "Overview of operating elements and connections") flashes green.

The charging time is approx. 4 hours. When the battery is fully charged, the power-on indicator lights continuously green.



Please note that:

- The battery is not charged at the time of delivery. Therefore, charge the battery for 12 hours before the first mobile use.
- Do not connect your Pocket PC to your computer (PC/notebook) yet. Before the first data synchronisation between your Pocket PC and your PC/notebook, you must install the program *ActiveSync* on your PC/notebook.

Installing ActiveSync on your PC/notebook

The data synchronisation helps you always keep your data on your Pocket PC and your PC/notebook up to date when you work alternately with your PC/notebook and your Pocket PC. You can transfer data you require when you're on the go from your PC/notebook to the Pocket PC using the data synchronisation feature. In the same way, you can copy the latest results of your work from the Pocket PC to your PC/notebook.

The ActiveSync cable and the *ActiveSync* software are provided for data synchronisation. *ActiveSync* is already installed on your Pocket PC. You need only install *ActiveSync* on your PC or notebook.

The *ActiveSync* program and the required drivers are contained on the Microsoft Companion CD.

- ▶ Insert the Microsoft Companion CD in the optical drive of your PC/notebook.

The installation program of *ActiveSync* will start.

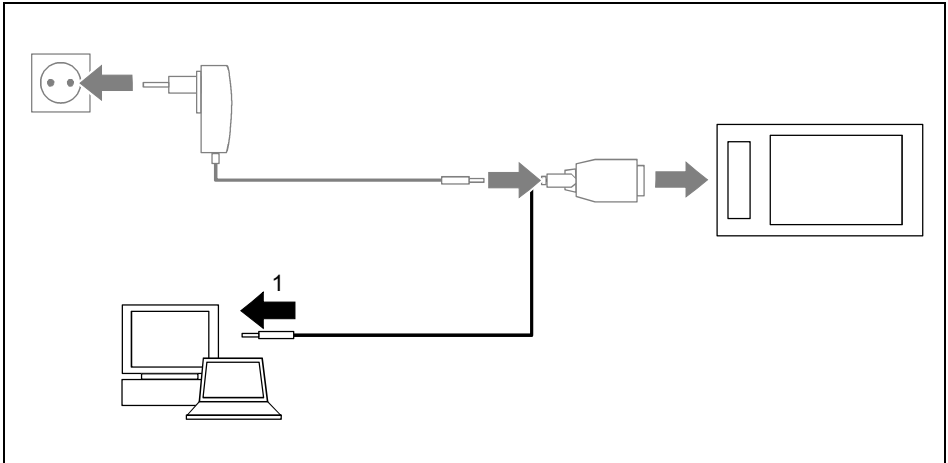
If the installation program of *ActiveSync* does not start automatically, you must double-click on the file *Setup.exe* of *ActiveSync*.

- ▶ Click on *Start here* and follow the instructions on the screen.
- ▶ Prepare the Pocket PC as described in the section "Starting Pocket PC the first time".

During the installation the software attempts to establish a connection to the Pocket PC.



If you have not yet installed *Outlook 2002* on your PC/notebook, you must install it on your PC/notebook before the first data synchronisation between your Pocket PC and your PC/notebook. *Outlook 2002* is provided on the included Microsoft Companion CD.



- ▶ Connect the ActiveSync cable to a USB port (1) of your PC/notebook.

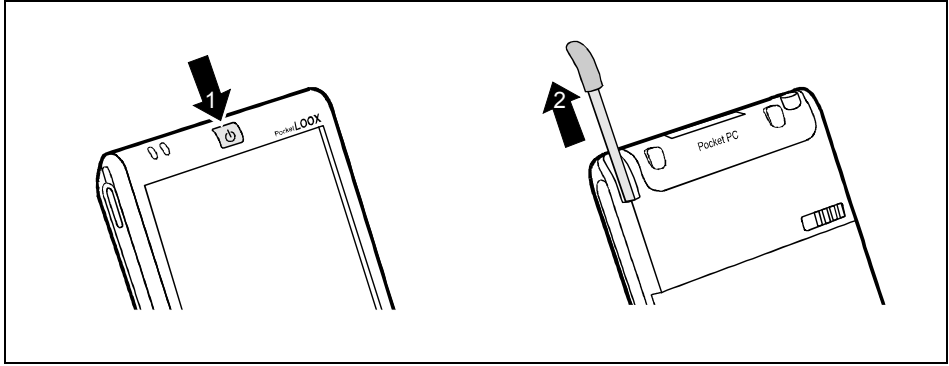
The Pocket PC is now connected to your PC/notebook. The ActiveSync partnership between your Pocket PC and your PC/notebook will be established. The *ActiveSync Setup Wizard* will help you do this.

First data synchronisation between the Pocket PC and the PC/notebook

After you have specified the desired and required settings for the synchronisation in the Wizard, the first synchronisation starts automatically.

ActiveSync is now installed on your PC/notebook and your Outlook data are synchronized with your new Pocket PC.

Starting Pocket PC the first time



- ▶ Press the Suspend/Resume button (1) to switch on the Pocket PC.
- ▶ Pull out the pen (2) in the direction of the arrow.

Adjusting touchscreen

The display of your Pocket PC is a touchscreen. To ensure that the touchscreen of your Pocket PC reacts correctly when touched with the stylus, you will be asked to align the touchscreen after the initial start-up.

Touch the centre of the cross hairs that appears on the display with the stylus. This procedure must be repeated several times, whereby the cross hairs appear at different locations on the display each time. Follow the instructions on the display.



To optimize the responsiveness of the touchscreen when touched with the stylus, you can also always realign the touchscreen (under *Start - Settings - System*).

Becoming familiar with basic operation

Next the operating system provides a brief introduction to the operation of the Pocket PC with the stylus after the initial start-up.

- ▶ Follow the instructions on the display.

Today screen

Following the introduction the Today screen appears. The Today screen always appears when you switch on the Pocket PC again after you have not used it for four or more hours. The Today screen shows all important current information at a glance. From this screen you have access to all programs and to the system settings.



Please also use the help function that is available on your Pocket PC if you want to know more about operating the programs contained in the operating system.

Switching Pocket PC off and on

You usually switch the Pocket PC into the Suspend mode with the Suspend/Resume button. After certain applications or the installation of new programs, it may be necessary to restart the Pocket PC with the soft reset. Only in seldom, isolated cases is it practical or necessary to reset the Pocket PC to the delivered state.

These three options for switching the Pocket PC off and on are explained in the following sections:

- Switching Pocket PC off and on during normal use
- Switching Pocket PC off and on with Soft Reset function
- Resetting Pocket PC to delivered state

Switching Pocket PC off and on during normal use

Switching off with Suspend/Resume button

- Briefly press the Suspend/Resume button to switch off the Pocket PC.

The Pocket PC is switched to suspend mode.



If you have specified a switch-off time with the system settings, your Pocket PC will automatically switch into the Suspend mode after this specified time.

There are two ways to switch on your Pocket PC:

Switching on with Suspend/Resume button

- Briefly press the Suspend/Resume button to switch on the Pocket PC.

The application you were working on before you switched off the Pocket PC with the Suspend/Resume button appears on the screen. The Today screen appears if you switch on your Pocket PC again with the Suspend/Resume button after more than four hours.

Switching on with application buttons

In the default configuration you can also switch on your Pocket PC by briefly pressing the application buttons (Number 14, 15, 17 and 18 in the section "Overview of operating elements and connections"). The applications assigned to the respective button appears on the screen. The applications *FSC SpeedMenu*, *Today*, *Contacts* and *Calendar* are preset. However, you can change the applications to be called up at any time according to your needs (see the "Configuring the Pocket PC" chapter) so that your preferred program opens immediately at the press of a button.



By making the appropriate setting in *FSC KeyLock* (see chapter "Configuring the Pocket PC"), you can also prevent the Pocket PC from being switched on when an application button is pressed.

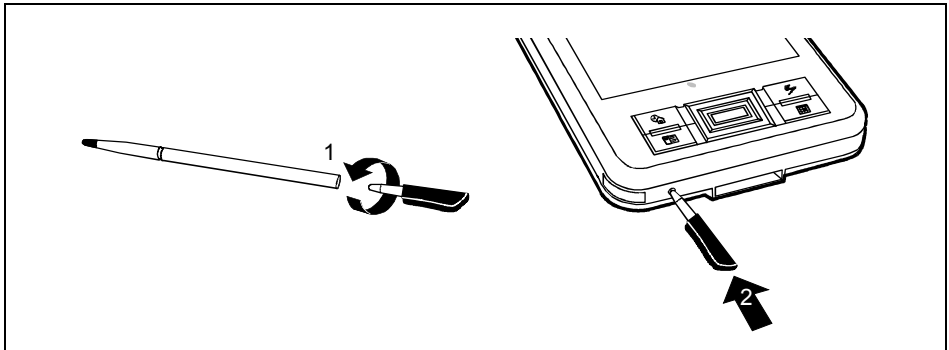
Switching on and off with soft reset (warm boot)

After certain applications or the installation of new programs, it may be necessary to restart the Pocket PC with the soft reset.



Data not yet saved in a file will be lost during this procedure. On the other hand, data in the RAM memory are retained.

- End all applications before you carry out a soft reset.



- Take the stylus and screw it apart (1).
- Briefly press the tip (2) into the soft reset opening.

The warm boot is carried out. The application you have just been working in appears on the display of your Pocket PC.

Resetting Pocket PC to delivered state

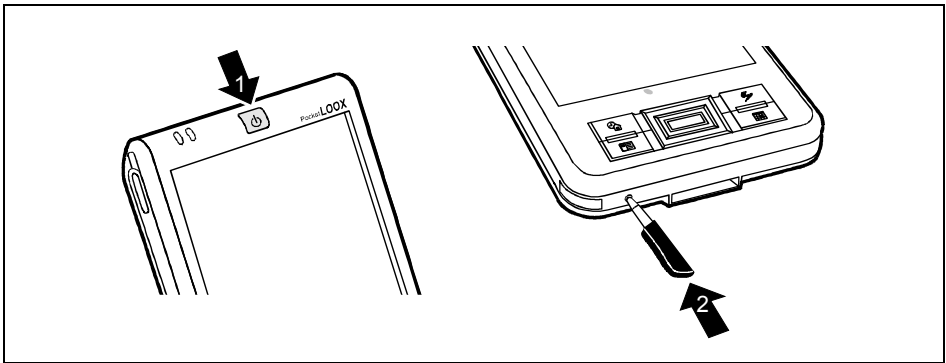
If your Pocket PC does not continue operating and switching off and on with the Suspend/Resume button and the soft reset fail to function, you can reset your Pocket PC to the delivered state.



When you reset your Pocket PC to the delivered state, the battery switches off so that the RAM content is lost. This means you lose all data (documents, additionally installed programs, personal settings) that you haven't saved elsewhere.

- ▶ Therefore, remember to make a regular data backup with synchronisation (see "Synchronising data with ActiveSync" section) or on corresponding memory cards (available as an accessory). The program is provided on your Pocket PC for completely backing up the RAM memory on memory cards (see "Backing up data with FSC Backup" section).

- ▶ Take the stylus and screw it apart.



- ▶ Simultaneously press the Suspend/Resume button (1) and the tip (2) into the soft reset opening.



After approximately 10 seconds a picture appears on the display and a tone sounds.

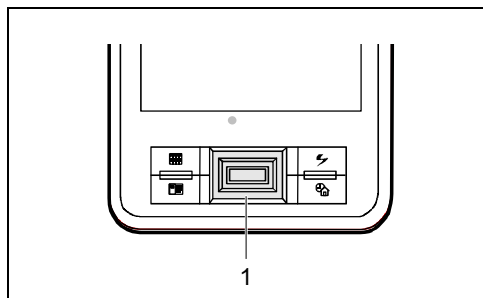
Using standard operating elements

Using the pen

You require the stylus for making entries on the touchscreen, for menu selection and for similar tasks.

- ▶ Briefly touch the desired element on the display with the stylus to trigger an action.
- ▶ To activate popup menus, also touch the desired element with the stylus, however leave the stylus on the element for a moment: the popup menu appears and you can select an element by touching it.

Using navigation key



With the navigation key (1) you scroll within the menus (up, down, to the left and right) and activate menu entries by pressing the centre of the navigation key.

The navigation key is also useful for one-hand operation with *FSC SpeedMenu*. More information on using the *FSC SpeedMenu* is contained in the "FSC SpeedMenu - quickly operating Pocket PC" chapter.

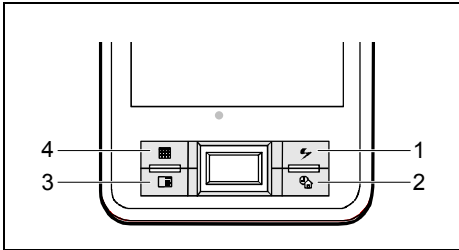
Selecting menu entry

- ▶ Press the up arrow, the down arrow, the right arrow or the left arrow if you want to select a menu entry.

Activating

- ▶ Press the centre of the navigation key to activate a selected menu entry.

Using the application buttons

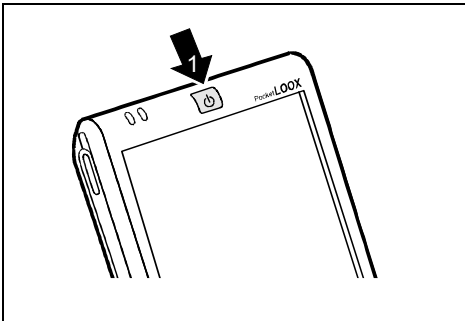


- 1 = FSC Speed button
- 2 = Today button
- 3 = Contacts button
- 4 = Calendar button

With the application buttons and the appropriate preset (see chapter "Configuring the Pocket PC"), you can open your preferred programs and applications directly from suspend mode or from within an application.

Upon delivery, the applications *FSC SpeedMenu*, *Contacts*, *Calendar* as well as *Today* are assigned to the four buttons.

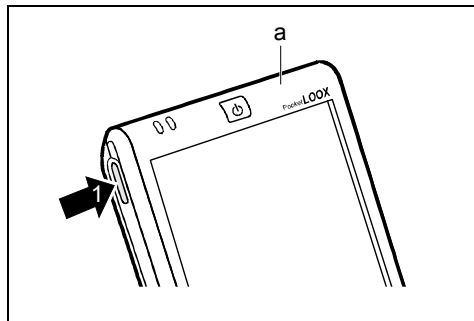
Switching display lighting off and on



If the ambient light conditions permit, you can switch the display lighting off or reduce its brightness to save energy. You can also specify the switching off and on again of the display lighting in the system settings of your Pocket PC (see the "Configuring the Pocket PC" chapter).

- Press the Suspend/Resume button (1) for longer than 1 second to switch the display lighting on or off.

Make sound recordings



A microphone (a) is integrated in your Pocket PC. You can record sound and speech in the *Notes* program.

- Press the record button (1) until an acoustic signal sounds.

The sound recording begins.

Further information on sound recording is provided in the help function of the operating system.

Inserting and removing memory cards

A slot enables the operation of a memory card of the type "Secure Digital I/O" or "MultiMediaCard".

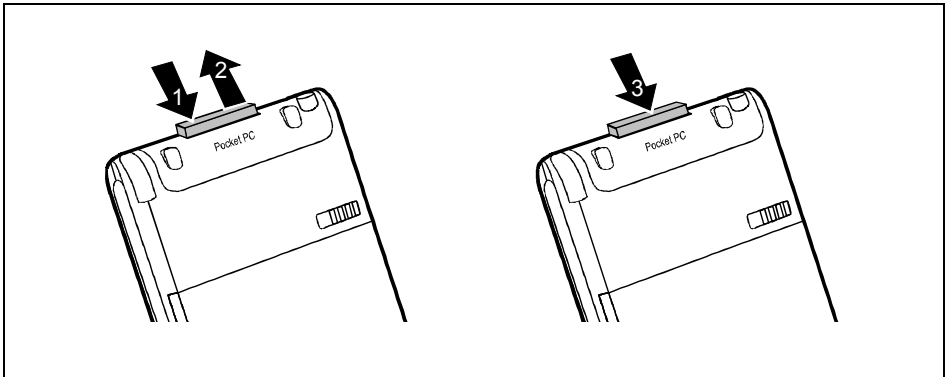


Observe the manufacturer's information when using memory cards.

Never use force when inserting or removing a memory card.

Make sure that no foreign objects enter the slot.

Inserting memory card



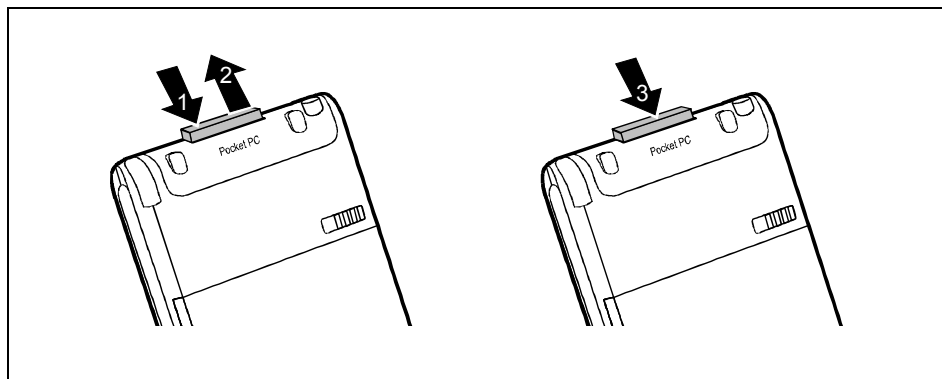
- ▶ Also press on the edge of the placeholder (1) so that the placeholder is pushed out of the slot somewhat.
- ▶ Pull the placeholder out of the Pocket PC (2).
- ▶ Carefully push the memory card (3) into the slot.

The memory card may protrude by one to several millimetres (depending on the memory card type).



Keep the placeholder for the memory card in a safe place. When you remove the memory card again, you should reinsert the memory card placeholder. This prevents foreign matter from getting into the slot.

Removing memory card



- ▶ Press on the edge of the memory card (1) so that the memory card jumps out of the slot slightly.
- ▶ Slide the memory card out of the Pocket PC (2).
- ▶ Insert the placeholder (3) again into the slot if necessary.

The placeholder protrudes one to two millimetres.

On the road with the Pocket PC

Your Pocket PC is equipped with a powerful battery. When you are away from your home or office, your Pocket PC is supplied with power by the installed battery and you can work for up to 10 hours without an electrical socket. At your home or office you can recharge the battery in the optional cradle. You can also take along the PSC11R-050 power adapter and connect your Pocket PC directly to an electrical outlet to recharge the battery when you're on the go.

In this chapter you'll learn how to charge the battery and use it most efficiently for mobile operation.

In addition, you'll find important information on transporting your Pocket PC and explanations on what you should watch when travelling with your Pocket PC in this chapter.

Charging the battery



The battery is not charged on delivery and should be charged for 12 hours prior to the first mobile use.

The battery charging time is otherwise approx. 4 hours.

You have two ways of doing this:

- You can connect the Pocket PC directly to an electrical outlet with the PSC11R-050 power adapter.
- You can connect the optional cradle to an electrical outlet with the PSC11R-050 power adapter and insert the Pocket PC in the cradle.

In both cases you can work with the Pocket PC during charging. This extends the charging time.

Charging battery directly with PSC11R-050 power adapter

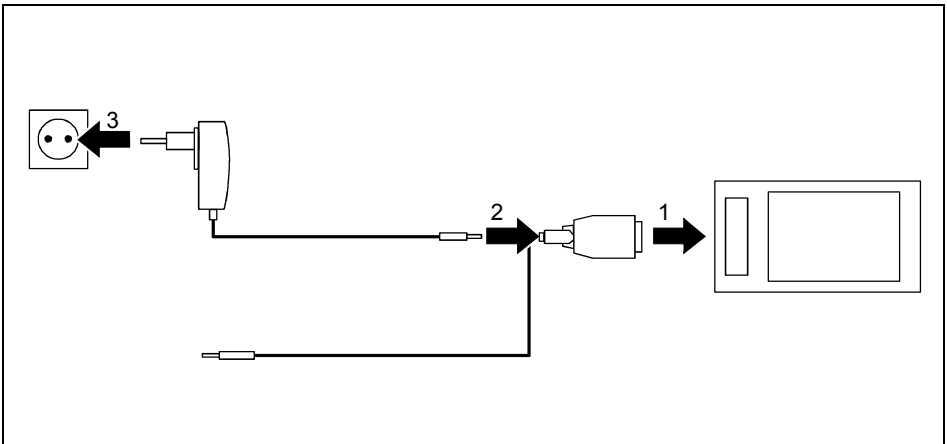
You can connect the PSC11R-050 power adapter directly to the Pocket PC. There are two ways to do this:

- You can use the ActiveSync cable..
- You can use the adapter.



Please take note of the information on the PSC11R-050 power adapter in the "Connecting PSC11R-050 power adapter" section.

Connecting PSC11R-050 power adapter to Pocket PC with ActiveSync cable

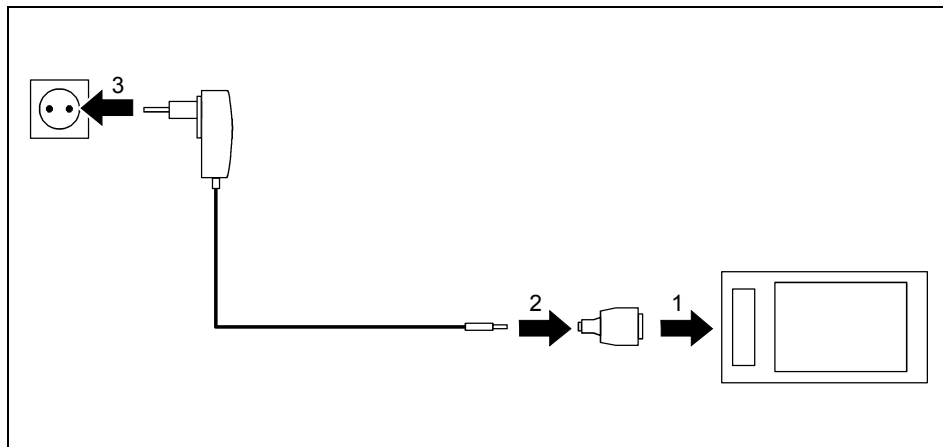


- ▶ Connect the ActiveSync cable (1) to the ActiveSync port on the Pocket PC.
- ▶ Connect the power adapter cable (2) to the DC socket of the ActiveSync cable.
- ▶ Connect the PSC11R-050 power adapter (3) to an electrical outlet.

The installed battery will now be charged. The power-on indicator (number 10 in the section "Overview of operating elements and connections") flashes green.

The charging time is approx. 4 hours. When the battery is fully charged, the power-on indicator lights continuously green.

Connecting PSC11R-050 power adapter to Pocket PC with adapter



- Connect the adapter (1) to the ActiveSync port of the Pocket PC.
- Connect the power adapter cable (2) to the adapter.
- Connect the PSC11R-050 power adapter (3) to an electrical outlet.

The installed battery will now be charged. The power-on indicator (number 10 in the section "Overview of operating elements and connections") flashes green.

The charging time is approx. 4 hours. When the battery is fully charged, the power-on indicator lights continuously green.

Charging battery with optional cradle

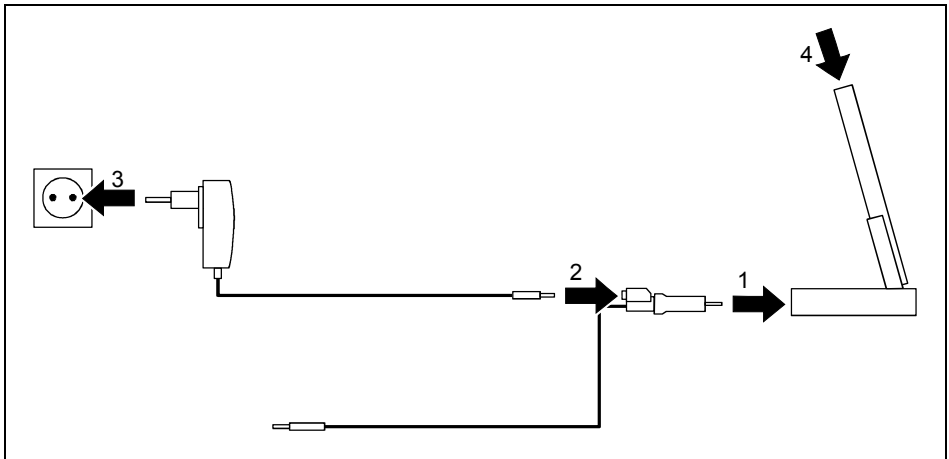
There are two ways to connect the PSC11R-050 power adapter to the optional cradle:

- You can use the ActiveSync cable..
- You can use the adapter.



Please take note of the information on the PSC11R-050 power adapter in the "Connecting PSC11R-050 power adapter" section.

Connecting PSC11R-050 power adapter to cradle with ActiveSync cable

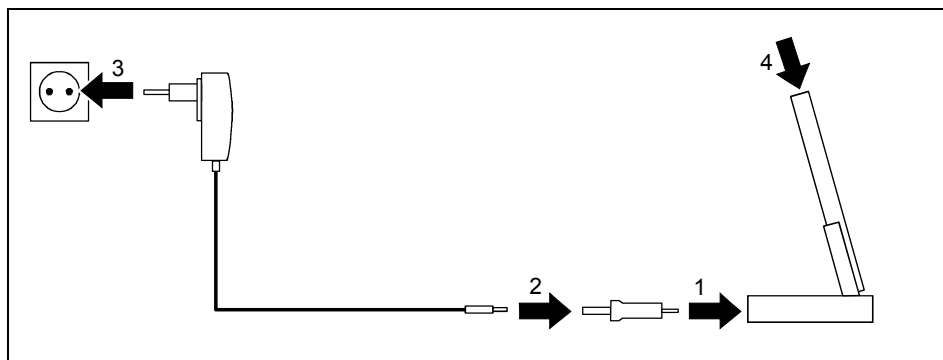


- ▶ Connect the ActiveSync cable (1) to the ActiveSync port of the cradle.
- ▶ Connect the power adapter cable (2) to the DC socket of the ActiveSync cable.
- ▶ Connect the PSC11R-050 power adapter (3) to an electrical outlet.
- ▶ Place the Pocket PC in the cradle (4).

The installed battery will now be charged. The power-on indicator (number 10 in the section "Overview of operating elements and connections") flashes green.

The charging time is approx. 4 hours. When the battery is fully charged, the power-on indicator lights continuously green.

Connecting PSC11R-050 power adapter to cradle with adapter



- ▶ Connect the adapter (1) to the ActiveSync port of the cradle.
- ▶ Connect the power adapter cable (2) to the adapter.
- ▶ Connect the PSC11R-050 power adapter (3) to an electrical outlet.
- ▶ Place the Pocket PC in the cradle (4).

The installed battery will now be charged. The power-on indicator (number 10 in the section "Overview of operating elements and connections") flashes green.

The charging time is approx. 4 hours. When the battery is fully charged, the power-on indicator lights continuously green.

Optimising battery operating time

When you have completely charged the battery, you can operate the Pocket PC for up to 10 hours without a power connection. However, it is not possible to exactly specify the maximum operating time, as different applications use more or less energy.

In the system settings you can make settings that help you save energy when using your Pocket PC. These settings enable you to use the battery operating time optimally. Please see the "Configuring the Pocket PC" chapter for information on how to save energy.



In the default setting, a setting is activated that automatically switches the Pocket PC into the Suspend mode after three minutes when working without a power connection if no entries are made during this time. You can switch on the Pocket PC again at any time by briefly pressing the Suspend/Resume button and then continue working where you left off.

Monitoring battery charge level

You can display the battery charge level under *Start - Settings - System - Power*.

Transporting Pocket PC

- Switch the Pocket PC into the Suspend mode.
- Pull the PSC11R-050 power adapter out of the electrical outlet.
- Disconnect the power adapter cable and the ActiveSync cable.
- If the device needs to be shipped, use the original packaging or other suitable packaging to protect it from damage caused by mishandling.
- Use a pouch for transporting the Pocket PC that provides protection against jolts and impacts (the protective pouch is available as an accessory).
- Protect the Pocket PC from severe shocks and extreme temperatures (e.g., direct sunlight in a car).

Information on travelling

- If you wish to use your Pocket PC during a flight, check first with the airline if this is allowed and under which conditions. Switch off Bluetooth and wireless LAN. Also observe the information in the "Wireless communication with Bluetooth" chapter and the safety precautions in the "Safety and Ergonomics" manual with regard to Bluetooth.
- In some countries the use of Bluetooth is restricted or completely prohibited. Ask about the regulations in the country you will be travelling in before starting your trip. As a precaution, switch Bluetooth off in case there is any uncertainty at your place of residence.
- If you are travelling abroad, ensure that the PSC11R-050 power adapter can be operated with the local mains voltage. Do not use any other voltage converter!



If you travel in another country, check whether the local power supply and the specifications of the PSC11R-050 power adapter are compatible.

Only use connection adapters approved for your Pocket PC.

- If you use a modem, incompatibilities with the local telecommunications system may result.

Synchronising data with ActiveSync

To also have the current version of the data you have processed on the road on your Pocket PC available on your PC/notebook, you must copy these data to your PC/notebook. This procedure is conveniently enabled with so-called data synchronisation:

In the *ActiveSync* program you can specify that the respective latest version of a file be detected and then automatically updated on the respective data carrier - regardless of whether it is the Pocket PC or a PC/notebook.

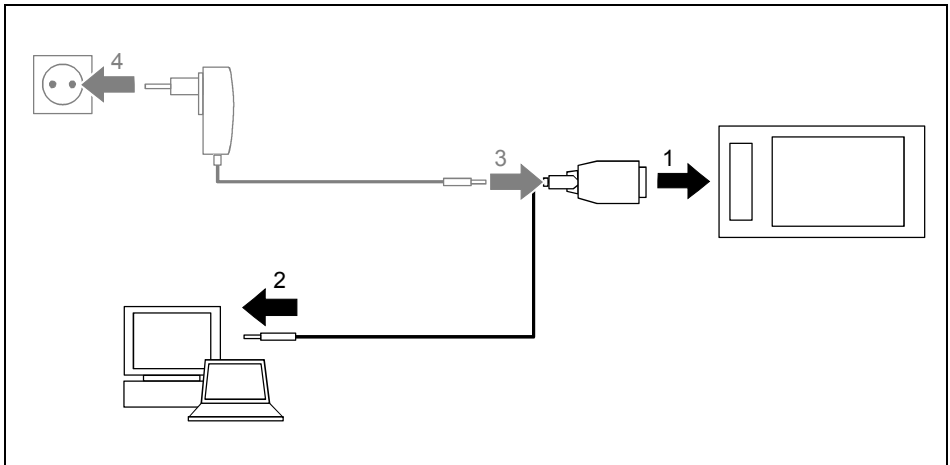
You can synchronise your data between your Pocket PC and your PC/notebook via the cradle (see the "Using optional cradle" chapter), using the ActiveSync cable or via infrared or Bluetooth.

You will find information on how you synchronise data using *ActiveSync*, in the *ActiveSync* help file on your PC/notebook.



If you have not yet installed the *ActiveSync* program on your PC/notebook, you must install it on your PC/notebook before the first data synchronisation between your Pocket PC and your PC/n (see the section "Initial start-up").

Connecting Pocket PC to PC/notebook



- Switch your PC or notebook on.
- Connect the ActiveSync cable (1) to the ActiveSync port of the cradle.
- Connect the ActiveSync cable to a USB port (2) of your PC/notebook.

The Pocket PC is now connected to your PC/notebook. The ActiveSync partnership between your Pocket PC and your PC/notebook will be established.

If the battery charge level of your Pocket PC is low, you should connect the PSC11R-050 power adapter (see the section "Connecting PSC11R-050 power adapter").

Synchronising data with new PC/notebook

If you want to synchronise data with a new PC/notebook, you must first install *ActiveSync* on this new PC/notebook and establish a new ActiveSync partnership (see the corresponding explanation in the section "Initial start-up").

Backing up data with FSC Backup

The Pocket PC saves your data such as appointments, addresses, things to do and notes, as well as all documents in the RAM memory of the device. These data are backed up to your PC during synchronisation with ActiveSync. However, to also make current data backups away from home or while on business trips, there is *FSC Backup*.

FSC Backup backs up an image of the RAM memory of your Pocket PC on a memory card ("Secure Digital I/O" or "MultiMediaCard") or in the integrated memory area, the LOOXstore (if this memory area exists). If your Pocket PC has experienced a power failure and the data from the RAM memory have been deleted, then you can restore a data backup you have made with *FSC Backup*. This provides you with the data status at the time of the backup again within just a few minutes.

As *FSC Backup* backs up and restores the entire RAM memory of your device, the registry, which contains the configuration data of your device and any programs installed in the RAM memory, is also backed up.

FSC Backup also provides you with the option of backing up and restoring single databases such as contacts, calendar or tasks as well as your connection settings. You will find information as to how you proceed for this in the *FSC Backup* help file on your Pocket PC.

Before you start a backup, make sure that sufficient memory space is available on the memory card or in the device, and that the battery holds a sufficient charge. If the battery charge level is low, connect the PSC11R-050 power adapter to charge the battery.



When you conduct a backup, you may not carry out any other operating procedure before the backup has been completed. Do not press any keys, touch the display or remove a memory card.

Backup

- ▶ Select *Start - Programs - FSC Backup*.
- ▶ When the screen of the *FSC Backup* program appears, select a destination for the backup.

Select the entry *SD-MM Card* for a memory card.

- ▶ Tap on the *Backup* button.

A message is output when the backup has been completed.

- ▶ Touch *OK* (navigation bar) to confirm your setting.

The screen of *FSC Backup* appears again on the display.

Restoring

The backup data saved on the memory card are restored in the RAM memory of the Pocket PC. All data in the RAM memory are restored as they were at the time of the backup. This also means that all data currently in the RAM memory of the Pocket PC are overwritten.

- ▶ Select *Start - Programs - FSC Backup*.
- ▶ When the screen of the *FSC Backup* appears, select the memory card from which the backup is to be restored.
FSC Backup indicates whether backup data are present on a memory card and when these were generated.
- ▶ Tap on the *Restore* button.

FSC Backup asks you whether you really want to restore the data.

- ▶ Tap on the *Yes* button if the data are to be restored and on the *No* button if this is not the case.

A message is output when the restoration has been completed.

- ▶ Touch *OK* (navigation bar) to confirm your setting.

The Pocket PC is reset and restarted.

Using optional cradle

With the optional cradle you can charge the battery in the Pocket PC and/or carry out a data synchronisation between the Pocket PC and a PC/notebook.

Selecting location for cradle

Place the cradle on a stable, flat and nonslippery surface. In view of the multitude of different finishes used on furniture, it is possible that the rubber feet of the Pocket PC will mark the surface they stand on.

The cradle and the PSC11R-050 power adapter should be at least 200 mm apart.

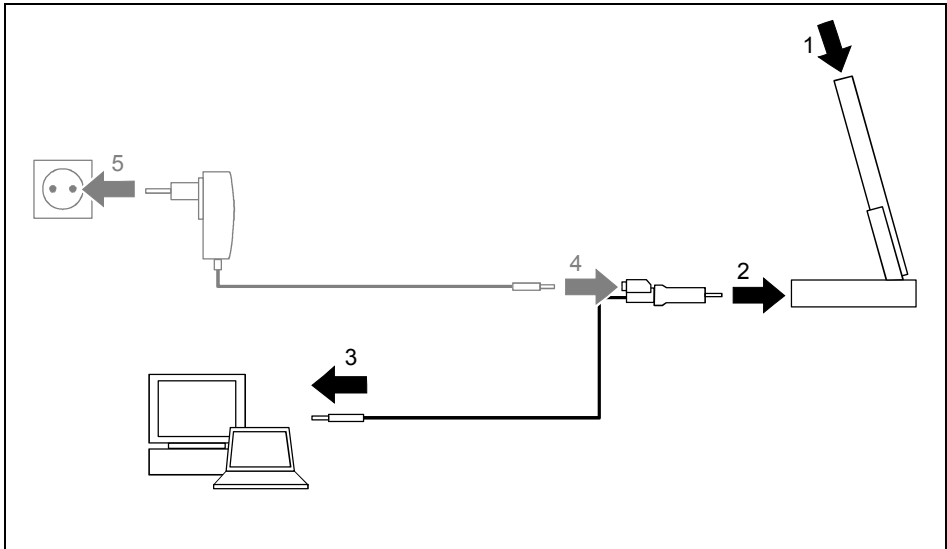
Keep other objects 100 mm away from the cradle and its PSC11R-050 power adapter to ensure adequate ventilation.

The Pocket PC and the cradle should not be subjected to extreme environmental conditions. Protect the Pocket PC and cradle from dust, moisture and heat.

Using cradle for data synchronisation



Before the first data synchronisation between the Pocket PC and the PC/notebook, you must install the program *ActiveSync* on your PC/notebook (see the section "Initial start-up").



- Switch your PC or notebook on.
- Place the Pocket PC in the cradle (1).
- Connect the ActiveSync cable (2) to the ActiveSync port of the cradle.
- Connect the ActiveSync cable to a USB port (3) of your PC/notebook.

The Pocket PC is now connected to your PC/notebook. The ActiveSync partnership between your Pocket PC and your PC/notebook will be established.

If the battery charge level of your Pocket PC is low, you should connect the PSC11R-050 power adapter (see the section "Connecting PSC11R-050 power adapter").



You can leave the connections between the cradle and PSC11R-050 power adapter, and between the cradle and your PC/notebook connected all the time. This means you only need to place your Pocket PC in the cradle to charge the battery and for data synchronisation.

You can also connect your Pocket PC directly to your PC/notebook with the ActiveSync cable.

You will find more information on data synchronisation in the "Synchronising data with ActiveSync" section and in the help file on your Pocket PC.

FSC SpeedMenu - quickly operating Pocket PC

FSC SpeedMenu simplifies the operating of your Pocket PC and speeds up everyday routines. *FSC SpeedMenu* also allows you to operate your Pocket PC with one hand: instead of using the stylus you can select and activate menu items easily by using the navigation key via the *FSC SpeedMenu*.

What advantages does the FSC SpeedMenu offer?

- It enables you to organise the documents, programmes and folders which you often use with the *FSC SpeedMenu*.
- It enables you to create submenus for a better overview.
- It enables you to open documents or folders directly from the menu.
- It enables you to start a programme directly from the menu.

In this chapter you'll learn how to use *FSC SpeedMenu* for your daily work.

Operating FSC SpeedMenu

► Press the FSC Speed button to start *FSC SpeedMenu*.

Depending on your preferences, you can operate *FSC SpeedMenu* with the navigation key or the stylus.

Operating with the navigation key

- To select an entry using the navigation key: Press the arrow up/down.
- To activate a selected entry (start the programmes, display submenus, open folders, display documents): Press the navigation key in the middle position.
- To activate a selected submenu: Press the navigation key in the middle position or the arrow right.
- To return to the superior menu: Press the arrow to the left.
If you are already in the main menu, the programme will be terminated.

Operating with the stylus

- To trigger the desired action (activate the entry, select the submenu, display help, terminate the programme): Press the corresponding menu entry or the corresponding button briefly.
- Return to a higher-level menu from a submenu: press the *Back arrow* button located in the navigation bar of the menu.
- To activate the pop-up menu: Press the desired entry a little bit longer. You can edit the menu structure in the pop-up menu. Details are contained in the "Editing FSC SpeedMenu" section.

Programme structure

The menu comprises two sections, which are either separated by a separating bar or by the arrow button.

Main and quick menu



FSC SpeedMenu default entries in Main and Quick menu. Separation of areas with bars *

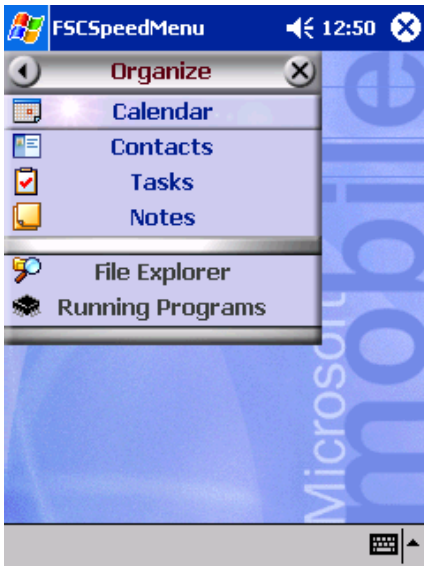
Main menu

- In the main menu you administer the documents and programmes which you often use into folders and subfolders.
- You can create up to 20 main entries and subentries.
- The menu title bar indicates which submenu is currently open.
- If there is not enough space for all of the entries on the display, move the section displayed. Touch the desired arrow button with the stylus to scroll. To scroll quickly to the top or bottom entry in the Main menu, leave the stylus on the respective arrow button for a moment.

Quick menu

- The quick menu is meant for your favourite programmes and documents i.e. the ones you use often.
- Your entries in the quick menu are always visible and can therefore be called at any time regardless of which submenu is activated in the main menu.

You can create up to five entries.

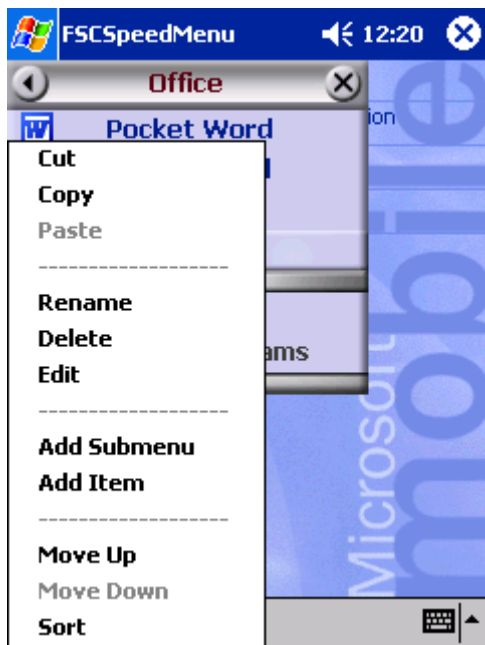


FSC SpeedMenu: default entries in *Organizer** submenu

*: The two illustrations show the default entries you will find when you start the *FSC SpeedMenu* the first time. You can leave the default entries as they are or change them at any time.

Editing FSC SpeedMenu

Within the defined program structure (see the "Programme structure" section) you can alter *FSC SpeedMenu* to meet your own needs. You can add new entries, rename entries, sort entries, create submenu entries, move the existing entries and, of course, also delete entries. In the following sections you'll learn how to proceed using the example "Adding menu entry".



FSC SpeedMenu: default entries in Organizer submenu*

1. Opening the pop-up menu
 - Press the chosen menu entry with the stylus for approx. 1 - 2 seconds.

The pop-up menu indicates the possible actions for that entry.

2. Add entry
 - Press *Add entry* in the popup menu with the stylus.
 - Enter the desired title for the entry.

The new entry appears in the menu just above the entry on which you have activated the pop-up menu.



If you have activated the pop-up menu on the arrow button, your new entry will appear at the end of the list in the main menu.

An overview of all possible actions is contained in the *FSC SpeedMenu* help on your Pocket PC.

Example of a configured *FSC SpeedMenu*



Tips and tricks

Activating an entry in Quick menu immediately after starting FSC SpeedMenu:

You need not scroll downward through all entries, but instead can use the roll-over function. Simply press the Up arrow on the navigation key following the program start and you immediately go to the bottom entry.

Inserting first entry in an empty menu:

Open the popup menu of the elements *Separating bar* or *Foot bar*. The entry is then entered in the Main menu or in the Quick menu.

Inserting entry at end of Main menu

If the list of the Main menu entries is so long that it no longer fits on the display, an arrow button appears at the lower end (also see the section "Programme structure"). To insert an entry at the end of this long menu, proceed as follows:

Touch the arrow button (down arrow) and leave the stylus on the arrow button for a moment. This scrolls down through the entries. As soon as the bottom entry is reached, the arrow button turns grey and can no longer be actuated. Briefly remove the stylus and then touch the button again. A popup menu appears and you can add your new entry.

Configuring the Pocket PC

You can already choose from a large number of programs when you use the Pocket PC for the first time. In addition, proven default settings are defined for the menu structure, energy management, memory management and security functions.

But, of course, you can add and remove programs and configure the Pocket PC as desired.

This chapter shows you how to

- optimise the energy management of your Pocket PC
- adjust the menus to your personal needs
- use the security functions
- change the time and use the alarm functions

For information on removing and adding programs, please refer to the documentation from the software manufacturer and the *ActiveSync* help file, that you can call at any time after installing *ActiveSync* on your notebook/PC.

We describe the configuration of the *FSC SpeedMenu* in the "Editing FSC SpeedMenu" chapter in this manual and in the *FSC SpeedMenu* help on your Pocket PC.

Optimising energy management

General information on energy management

The battery operating time is considerably dependent on the applications used. Please consider that a particularly large amount of energy is required to play sound files or make sound recordings. Therefore, if you want to work for up to 10 hours without a power connection, limit the use of energy-intensive applications.

Data exchange with a PC or notebook also consumes additional battery power. Therefore, always connect your Pocket PC to an electrical outlet during data exchange if possible.

We also recommend that you reduce the display brightness to effectively save energy and therefore appreciably increase the time you can work with the battery.

Monitoring battery charge level

You can display the battery charge level under *Start - Settings - System - Power*.

If the battery charge level is very low, you will be warned with a dialog window during operation. Then immediately connect your Pocket PC to an electrical outlet.

If you do not immediately connect your Pocket PC to the mains power, the Pocket PC will automatically switch itself off. The data in the RAM memory remains intact for several hours.

However, if the Pocket PC is still not connected to the mains power during this period, all data that is only in RAM (such as documents, additionally installed programs, personal settings) will be lost. In other words, your Pocket PC is reset to the delivery state.

Using energy-saving functions

You can save energy in several ways to optimally utilise the battery operating time:

- Switch the Pocket PC into the Suspend mode when you are not using it.
- Reduce the processor speed.
- Switch the display lighting off or reduce the brightness.
- Switch off the sound, reduce the volume or only allow acoustic signals for certain applications.

Switching the Pocket PC into Suspend mode

- Select the number of minutes after which the Pocket PC is to switch into the Suspend mode when it is not used under *Start - Settings - System - Power*.

The desired settings are made separately for battery operation and with a power outlet.

- Touch *OK* (navigation bar) to confirm your setting.



- Press the Suspend/Resume button to deactivate the Suspend mode.
The Pocket PC returns to the point at which you interrupted your work.

Switching off display lighting

- ▶ Select the number of minutes after which the display lighting is to be switched off in the battery mode when the Pocket PC is not used under *Start - Settings - System - Backlight*.

We advise you to keep the time until automatic switch-off very short.

- ▶ Touch *OK* (navigation bar) to confirm your setting.

Reducing brightness

- ▶ Reduce the display brightness under *Start - Settings - System - Brightness*.

The desired settings are made separately for battery operation and operation with the power adapter.

- ▶ Touch *OK* (navigation bar) to confirm your setting.

Switching off sound

- ▶ Touch the loudspeaker symbol in the navigation bar.

A popup window for the loudspeaker settings appears.

- ▶ Activate the selection field for *Off* with the stylus.
- ▶ Touch the display anywhere outside the popup window.

Adjusting volume

- ▶ Touch the loudspeaker symbol in the navigation bar.

A popup window for the loudspeaker settings appears.

- ▶ Set the desired volume on the slide control with the stylus.
- ▶ Touch the display anywhere outside the popup window.

or

- ▶ Set the desired volume under *Start - Settings - Private - Sounds & Messages*.
- ▶ Touch *OK* (navigation bar) to confirm your setting.

Permitting sound only for certain actions

- ▶ Touch the *Sounds & Messages* symbol under *Start - Settings - Private*.

Under the heading *Activate sound for* you will find a list of actions that are usually assigned acoustic signals. You can select yourself which applications or functions are to be accompanied by sounds.

- ▶ Touch *OK* (navigation bar) to confirm your setting.

Adjusting menus

Frequently used programs appear in the Start menu. You can adjust the Start menu to meet your needs.

- ▶ Touch the *Menus* symbol under *Start - Settings - Private*.

A list of programs/applications appears.

To remove programs from the Start menu, click in the checkbox of the program. The check mark is removed from the checkbox.

To add programs to the Start menu, click in the checkbox of the desired program. A check mark appears in the checkbox.

- ▶ Touch *OK* (navigation bar) to confirm your setting.

You can also create a new menu that you can display in the task bar on the Today screen.

- ▶ Select *Menu 'New'* tab under *Start - Settings - Private - Menus*.
- ▶ Touch the checkbox for the entry *Activate 'Neu' popup menu*.
- ▶ Select those applications from the list that are to appear in the new menu.
- ▶ Touch *OK* (navigation bar) to confirm your setting.

Password protection under Pocket PC 2003

You can protect your Pocket PC from unauthorised access with a password. This makes your data accessible only to persons who know the password.

- ▶ Touch the *Password* symbol under *Start - Settings - Private*.
- ▶ Select the type of password you prefer:
 - A password consisting of four numbers (simple 4-digit password).
 - A password of alphanumeric characters (a complex alphanumeric password).

Password of four numbers

- ▶ Touch the desired combination of numbers on the number field.
- ▶ Touch *OK* (navigation bar) to confirm your setting.

A dialog box appears.

- ▶ Confirm with *Yes*.

Alphanumeric password

The password must consist of at least 7 characters and a combination of uppercase and lowercase letters and numbers or punctuation marks.

- ▶ Touch the desired password on the keypad.
- ▶ Touch the lower entry field with the stylus.
- ▶ Repeat the password entry to confirm it.
- ▶ Touch *OK* (navigation bar) to confirm your setting.

A dialog box appears.

- ▶ Confirm with *Yes*.

The Pocket PC is now protected with a password.

Switch off the Pocket PC by briefly pressing the Suspend/Resume button.

The next time you switch on your Pocket PC you must first enter the password before the Today screen or the content on which you last worked appears on the display.

If you have forgotten your password, you can restart your Pocket PC by resetting it to the delivered state (see the section "Resetting Pocket PC to delivered state").



Therefore, remember to make a regular data backup with synchronisation (see "Synchronising data with ActiveSync" section) or on corresponding memory cards (available as an accessory). The program *FSC-Backup* is provided on your Pocket PC for completely backing up the RAM memory.

Changing time

During the initial start-up you entered the time zone of your location and set your system clock.

If you would like to change the time, proceed as follows:

- ▶ Touch the *Clock* symbol under *Start - Settings - System*.

Depending on your preference, you can change the time by moving the clock hands or by entering the desired time.

- ▶ Touch *OK* (navigation bar) to confirm your setting.

In addition, you can also activate a second time, for example in another time zone. This informs you of the time of day of your business partners at all times or provides you with an overview of both the time in the country you are travelling in and at home.

Using alarm functions

The alarm function of the Pocket PC is not only practical in the morning, but can also be useful before important appointments or deadlines. Have the Pocket PC "wake you": your Pocket PC will remind you in advance of upcoming appointments or deadlines with an acoustic signal. You can select from a large number of different alarm signals.

- ▶ Select the *Signal* tab under *Start - Settings - System - Clock*.
- ▶ Touch the top checkbox.
- ▶ Mark one or several days of the week.
- ▶ Touch the time.

Depending on your preference, select the alarm time by moving the clock hands or by entering the desired time.

- ▶ Touch *OK* (navigation bar) to confirm your setting.
- ▶ Touch the bell symbol.

Now you can select how you want to be woken up or notified.

If you have activated *Play sound*, you can select the desired signal in the list next to it (drop-down menu).

- ▶ Touch the small button with the down arrow next to the title *Alarm1*.

The drop-down menu appears. You can view all menu items by sliding the scroll bar.

- ▶ Touch the desired signal.

The signal is then played.

- ▶ Touch *OK* (navigation bar) to confirm your setting.

You return to the *Signal* tab, where you can enter a name or a short description for the specified alarm function.

- ▶ Touch the word *Description* with the stylus.
- ▶ Enter a name for this alarm function with the keypad.
- ▶ Touch *OK* (navigation bar) to confirm your setting.

You can enter additional wake-up times in this way.

Connecting and networking the Pocket PC with other devices

The Pocket PC offers a wide range of ways to exchange data with other devices or to work in a network.

You have already become familiar with data synchronisation via *ActiveSync* and an ActiveSync cable in the "Synchronising data with ActiveSync" section. You can connect the ActiveSync cable provided to any PC or notebook equipped with a USB port. An active ActiveSync cable for devices with a serial port is also available as an accessory.

In addition, you also have the infrared interface, Bluetooth, and Wireless LAN (optional, depending on the model) available to you for wireless communication. With various cards as accessories (LAN card, W-LAN or modem card) you can integrate your Pocket PC in networks and establish a connection to the Internet.

This chapter provides you with information on wireless data transfer

- . via infrared interface
- . via Bluetooth (depending on model)
- . via Wireless LAN (optional, depending on model)

Please see the documentation of the respective card for information on using LAN, W-LAN or modem cards.

Safety precautions when using radio components

- Switch off the radio component when you are in a hospital or near a medical electronics system, as the radio waves transmitted by the radio component may impair the operation of the medical devices.
- Do not bring the Pocket PC into an operating room with the radio component switched on, as the radio waves transmitted by the radio component may impair the operation of medical electronic systems used there.
- Keep the Pocket PC at least 20 cm from a pacemaker with the radio components switched on, as otherwise the proper functioning of the pacemaker can be interfered with by the radio waves.
- The radio waves transmitted by the radio component can cause an unpleasant humming in hearing aids.
- Switch off the radio component when you are in an aircraft or driving in a car.
- Do not bring the Pocket PC near flammable gases or into potentially explosive atmospheres with the radio component switched on. (e.g. petrol station), as the radio waves transmitted can cause an explosion or a fire.

The company Fujitsu Siemens Computers GmbH cannot be held responsible for radio or television faults arising from unauthorised changes made to this device. Fujitsu Siemens is, furthermore, not responsible for replacing and / or exchanging connector cables and devices which have not been specified by Fujitsu Siemens Computers GmbH. The user is solely responsible for repairing faults arising from such unauthorised changes made to a device and for replacing and/or exchanging devices.

Wireless data transfer with infrared interface

The infrared interface (IrDA) provides you with wireless serial data transfer of up to 4 Mbits/s. In general, Fast Infrared is the interface of choice for the fastest possible data transfer rate of 4 Mbits/s. However, should you notice difficulties when exchanging data with slower devices, please switch to the Slow Infrared setting (115 kbits).

For data transfer, you must align the infrared interface of your Pocket PC with that of the partner device. The devices must not be more than one metre apart. The infrared interface of one device must be in the range of influence (horizontally approx. 30 ° and vertically approx. 15 °) of the infrared interface of the other device.

Wireless communication with Bluetooth (optional)

With your Pocket PC with an integrated Bluetooth™ module you can communicate wirelessly with other Bluetooth devices, e.g. with another Pocket PC, a notebook or a mobile phone.

Your Pocket PC with integrated Bluetooth is a Power Class 2 device, i.e. it has a maximum range of 10 meters. The range of the communication paths is shortened depending on the user environment (e.g. walls or furniture), building structure and output power class of the partner.

Bluetooth supports many functions (*Services*), e.g. accessing the Internet and transmitting or receiving data or e-mails.

In the following sections, you will find out how to put Bluetooth into operation.

The help file for the software on your Pocket PC explains how you operate the software concerned.

Selecting location for Bluetooth operation

- We recommend that you use the Pocket PC with the Bluetooth components in a typical operating environment. Other Bluetooth devices, which you want to communicate with, should be located at a distance of up to 10 m.
- Only install a partner device within the recommended distance. Observe the output power class of the partner device when doing so. Details are contained in the operating manual of the partner device.
- Use the Pocket PC with the Bluetooth at least 2 m away from other electrical or electronic systems. If you must use the Pocket PC near a microwave cooker, then maintain a distance of at least 3 m from the microwave cooker, as the reception is subject to interference with regard to microwaves.
- Should problems result when communicating via Bluetooth because radios or radio devices are located in the vicinity, then move the Pocket PC to a different location.

Activating and deactivating Bluetooth

You can switch Bluetooth on and off just as you wish. This enables you to also use your Pocket PC wherever radio modules such as Bluetooth may not be operated, such as hospitals and aircraft (please also observe the safety precautions in the "Safety and Ergonomics" manual on this point). Switch off Bluetooth at places like this. This will interrupt the Bluetooth connection.

- Touch the Bluetooth symbol of the Today screen (the Bluetooth symbol is located on the right in the bottom bar). You can switch Bluetooth on and off here.

Wireless connection via Wireless LAN (optional)

If your Pocket PC has an integrated Wireless LAN installed, you will find information on it in the help file on your Pocket PC.

In the same way as Bluetooth, you can also activate and deactivate the integrated Wireless LAN just as you wish.

- Touch the *WLAN Power* symbol under *Start - Settings - System*. You can switch wireless LAN on and off here. Bluetooth&Wireless Lan can cwork by time division multiple access mode.

Troubleshooting and tips

If a fault occurs in your Pocket PC, try to eliminate it with the measures described in this chapter. If you fail to correct the problem, proceed as follows:

- ▶ Make a note of the steps and the circumstances that led to the fault. Also make a note of any error messages displayed.
- ▶ Switch the Pocket PC off.
- ▶ Contact your sales outlet or our hotline/help desk.

Installing new software

You will find information on installing supplementary programs in the *ActiveSync* help file that you can call up after installing *ActiveSync* on your PC/notebook.

- ▶ When installing programmes or drivers, important files may be overwritten and modified. To be able to access the original files in case of problems following installation, you should make a backup copy prior to installation (see the "Synchronising data with ActiveSync" and "Backing up data with FSC Backup" sections).

Date or time of the Pocket PC is incorrect

- ▶ Touch the *Clock* symbol under *Start - Settings - System*.

Depending on your preference, you can change the time by moving the clock hands or by entering the desired time.

- ▶ Touch *OK* (navigation bar) to confirm your setting.

or

- ▶ Connect your Pocket PC via *ActiveSync* to your PC/Notebook.
- ▶ Synchronise data between the Pocket PC and the PC/notebook. The time and date are also synchronised in the process.

The display of the Pocket PC remains dark

Display lighting is switched off

- ▶ Press the Suspend/Resume button longer than 1 second.

The information on the display of the Pocket PC is difficult to read

Reflection

- ▶ Turn the Pocket PC until you can see the information in the display again.

The Pocket PC switches off

If you operate the Pocket PC too long with only the battery, the Pocket PC switches into the Suspend mode when the battery charging level is too low.

- ▶ Connect the PSC11R-050 power adapter to charge the battery.
- ▶ Press the Suspend/Resume button.

The Pocket PC does not start after switch on

If the Pocket PC does not start after switch on, this may be due to one of the following:

The battery is dead

- ▶ Charge the battery.
- ▶ Connect the PSC11R-050 power adapter to the cradle with the Pocket PC.
- ▶ Check whether the PSC11R-050 power adapter is connected correctly to the cradle.
- ▶ Check whether the power cable is plugged properly into the power adapter and into the mains outlet. The indicator on the power adapter should illuminate.

The battery is charged. The power-on indicator flashes green.

PSC11R-050 power adapter is not properly connected

- ▶ Switch the Pocket PC off.
- ▶ Check whether the PSC11R-050 power adapter is properly connected to the Pocket PC and the electrical outlet.
- ▶ Then switch the Pocket PC on again

The Pocket PC stops working

If the Pocket PC stops working, this may have the following reasons:

An application programme has caused the malfunction

- ▶ Restart the Pocket PC (see the section "Switching on and off with soft reset (warm boot)").
- or
- ▶ If the restart does not function, reset the Pocket PC to the delivered state (see the section "Resetting Pocket PC to delivered state").



When you reset the Pocket PC to the delivered state, your data are lost!

Therefore, remember to make a regular data backup with synchronisation (see "Synchronising data with ActiveSync" section) or on corresponding memory cards (available as an accessory). The program *FSC-Backup* is provided on your Pocket PC for completely backing up the RAM memory.

The battery is dead

- ▶ Connect the PSC11R-050 power adapter to the Pocket PC to charge the battery.
- Or
- ▶ Connect the PSC11R-050 power adapter to the cradle and place the Pocket PC in the cradle for charging.

The battery discharges too quickly

The battery is either too hot or too cold.

- ▶ Bring the Pocket PC up / down to a normal temperature again.

If the operating time of the battery mode is extremely short, the battery is probably old and should be replaced. Please contact your dealer for a new battery.

The Suspend/Resume button does not respond properly

You have pressed and held the Suspend/Resume button too long to switch the Pocket PC on or off.

- ▶ Briefly press the Suspend/Resume button until the Pocket PC switches on or off.

No sound or minimal volume

Check whether the volume is set correctly.

- ▶ Touch the loudspeaker symbol in the navigation bar.

A popup window for the loudspeaker settings appears.

- ▶ Activate the selection field for *Off* with the stylus.

or

Set the desired volume on the slide control with the stylus.

or

- ▶ Set the desired volume under *Start - Settings - Private - Sounds & Messages*.

- ▶ Touch *OK* (navigation bar) to confirm your setting.

Contact with hotline/help desk

If you are unable to solve a certain problem, please contact the hotline/help desk. Additional details are contained in the "Safety and Ergonomics" and "Warranty" manuals. Please have the following information ready when you call:

- The model name and serial number of the Pocket PC. The serial number is located on a sticker on the backside of the Pocket PC.
- Notes of any messages that appear on the screen and information on acoustic signals.
- Any changes you have made to the hardware or software after receiving the Pocket PC.
- Your system configuration and all peripheral devices connected to your system (e. g. keyboard).
- Your sales contract.

Technical data

Pocket PC

Processor:	Intel PXA255 Applications Processor with Intel® XScale™ technology from 300 MHz
Main memory:	64 MB RAM, 32 MB ROM

Electrical data

Regulations complied with:	CE, FCC Part 15 Class B, EN60950, UL, cUL
Protection class:	III
Maximum power draw: (Pocket PC on with battery charging)	10 W

Display

Display diagonal:	240 x 320 transfective TFT display, resolution 65,536 colours
Dimensions: (W x H)	53.6 mm x 71.5 mm; 0.22 mm pixel spacing

Memory card slot

Supports following memory card types:	<ul style="list-style-type: none">• "Secure Digital I/O"• "MultiMediaCard"
---------------------------------------	---

Ports

Integrated microphone / loudspeaker	1 / 1
Headphones port	3.5 mm
Infrared interface:	IrDA (up to 150 kbits/s)
Bluetooth	Class 2

Supported interfaces

USB port	USB 1.1 (via ActiveSync cable)
----------	--------------------------------

Environmental conditions

Environment class 3K2, 2K2

DIN IEC 721 EN 60721

Housing class 7M2

DIN IEC 721 EN 60721

Temperature:

- Operating (3K2)
- Transport (2K2)

5 °C 40 °C

-25 °C 60 °C

Dimensions

Width/depth/height:

113,1 mm/70,6 mm/14,1 mm

Weight:

approx. 125 g

Battery

Rated capacity:

1130 mAh

Charging time (when not in operation):

Max. 4 hours

Operating time:

up to 10 hours

up to 350 hours in stand-by mode

PSC11R-050 power adapter

- Rated voltage:

100 V to 240 V (automatic)

- Frequency:

50 Hz to 60 Hz (automatic)

- Rated voltage:

5 V $\pm 5\%$

- Max. rated current:

2.0 A $\pm 5\%$

Index

A

- ActiveSync partnership, establishing 15
- ActiveSync port 10
- ActiveSync, installing 14
- Alarms 46
- Application button
 - Calendar button 10
 - Contacts button 10
 - FSC Speed button 10
 - Today button 10
- Application buttons
 - switching on 18
 - using 21

B

- Battery
 - capacity 6
 - charging 25
 - discharging 53
 - installing 12
 - operating time, optimising 28
 - storing 6
 - technical data 56
- Bluetooth 48
 - activating 49
 - deactivating 49
- Buffer battery, load 51

C

- Calendar button 10
- CE marking 6
- Cleaning 6
- Contacts button 10
- Cradle, using 32

D

- Dark display 51
- Data
 - backing up 31
 - synchronisation 30
 - technical 55
- Data transfer
 - Bluetooth 48
 - infrared 48
 - Wireless LAN 49
- Date, not correct 51
- Date/Time incorrect 51
- Delivered state 19

Display

- cleaning 6
- difficult to read 52
- reflected glare 52
- remains blank 51
- Display lighting 43
 - switching off 21
 - switching on 21
- Disposal 5

E

- Electromagnetic compatibility 6
- Energy management, optimising 41
- Energy saving 5

F

- First start 16
- FSC Backup 31
- FSC Speed button 10
- FSC SpeedMenu 35
 - editing 38
 - main menu 36
 - navigation key 35
 - operating 35
 - programme structure 36
 - Quick menu 36
 - stylus 35
 - troubleshooting and tips 40

H

- Hardware
 - overview 10
 - reset 19
- Headphone port 10
- Hotline/Help Desk 54

I

- Infrared interface 10, 48
- Initial start-up, first start 16

L

- Loudspeaker 10

M

- Memory card
 - handling 23
 - inserting 23
 - removing 24
 - slot 10
- Microphone 10, 22

- N**
 - Navigation key 10
 - using 20
 - No sound 54
 - Notational conventions 3
 - Notes
 - CE marking 6
 - cleaning 6
 - disposal 5
 - energy saving 5
 - safety 4
- O**
 - On/off time 17
 - Operating, basically 16
 - Overview
 - hardware 10
 - software 7
- P**
 - Password protection under Pocket PC 2003 44
 - Pocket PC
 - before you travel 29
 - cleaning 6
 - configuring 41
 - connecting with other devices 47
 - does not start 52
 - does not work 53
 - networking 47
 - operating 9
 - operating with one hand 35
 - switch off 17
 - switches itself off 52
 - switching on 16, 17
 - transporting 29
 - Power saving possibilities 42
 - Power-on indicator 10
 - Preparing for use, first time 11
- R**
 - Radio indicator 10
 - Recycling 5
- S**
 - Safety 4
 - Screen too bright 52
 - Signs and symbols 3
- Soft reset** 18
 - opening 10
- Software**
 - installing new software 51
 - new installation 51
 - overview 7
- Sound**
 - activating optionally 43
 - switching off 43
- Sound recording, record button** 22
- Standard operating elements, using** 20
- Storage, battery** 6
- Stylus** 10
 - removing 16
 - using 20
- Summer time** 51
- Suspend mode** 17
- Suspend/Resume button** 10
 - does not react 53
 - switching off 17
 - switching on 17
- T**
 - Technical data** 55
 - battery 56
 - Pocket PC 55
 - PSC11R-050 power adapter 56
 - Time**
 - changing 45
 - daylight savings 51
 - not correct 51
 - Tips** 51
 - Today button** 10
 - Today screen** 16
 - Touchscreen, aligning** 16
 - Transport** 29
 - Travel, Pocket PC** 29
 - Troubleshooting** 51
- V**
 - Volume** 43
 - minimal 54
- W**
 - Warm boot** 18
 - Wireless data transfer** 48, 49
 - Wireless LAN** 49