

EX7710-B0

AX11000 WiFi 6E 10G Ethernet Gateway

DRAFT

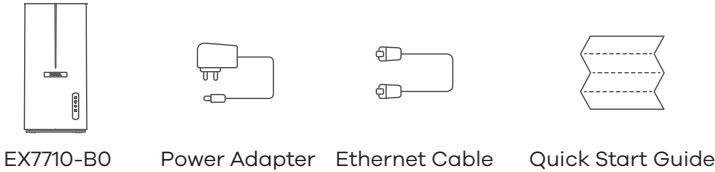
Quick Start Guide

A member of the Zyxel MPro Mesh™ PLUS solution family.
MPro Mesh™ PLUS Solution:

- EX7710-B0
- WX5610-B0
- MPro Mesh™ PLUS App

Visit www.zyxel.com/us/en for updated information.

Package Contents



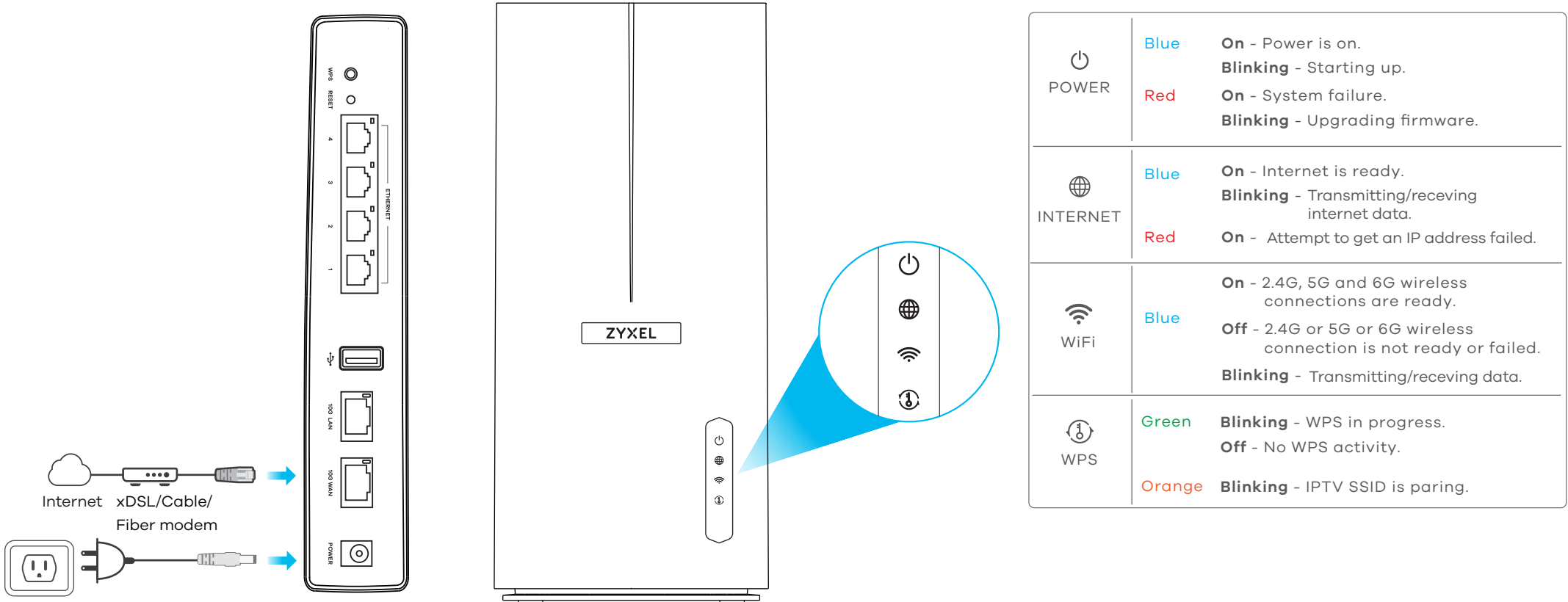
Support information
<https://service-provider.zyxel.com/global/en/tech-support>

See the User's Guide at www.zyxel.com for more information, including customer support and safety warnings.

US Importer
Zyxel Communications, Inc
1130 North Miller Street Anaheim, CA 92806-2001
<https://www.zyxel.com/us/en/>
Copyright © 2023 Zyxel and/or its affiliates. All Rights Reserved.

Step 1 Hardware Installation

- 1 Use the included Ethernet cable to connect the xDSL/cable/fiber modem's LAN port to the EX7710-B0's **10G WAN** port as illustrated.
- 2 Connect the power adapter to the EX7710-B0 and wait for 2 minutes. Check the EX7710-B0 front panel.
- 3 The **Power** / **Internet** / **WiFi** / **WPS** LEDs will light up when the setup is complete.
Note: If the lights do not turn on, please retry ① ② ③ or contact your service provider for assistance.

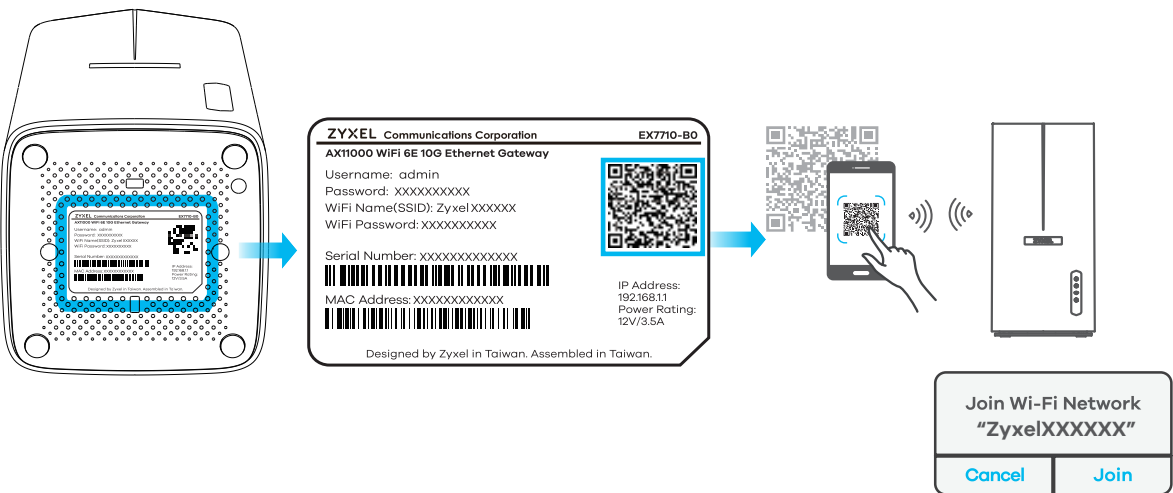


Step 2 WiFi Connection A or B

The label on the bottom of the EX7710-B0 provides 2 ways to connect your wireless device to WiFi:
Method A: Scan QR code or Method B: Using SSID

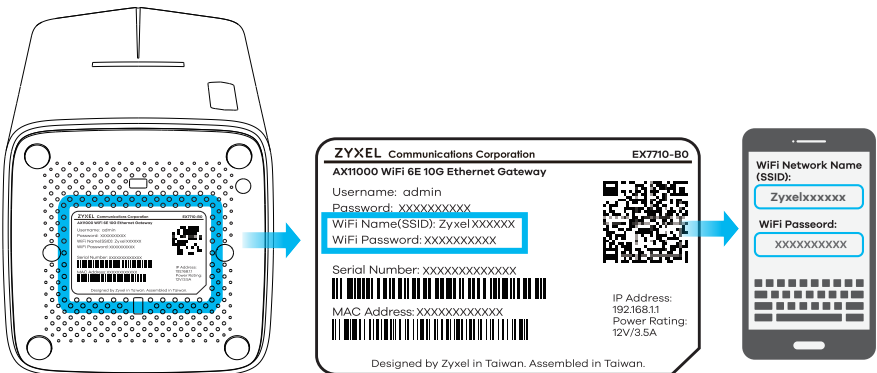
Method A: SCAN QR code to connect WiFi

- 1 Use your wireless device to scan the QR code on the EX7710-B0's bottom label.
- 2 After scanning the QR code, join this WiFi network and you can surf the internet.



B. Using the SSID method to connect WiFi

- 1 The WiFi network is on the EX7710-B0's bottom label.
- 2 On your wireless device, find this SSID and enter the WiFi Password on your wireless clients to surf the internet.

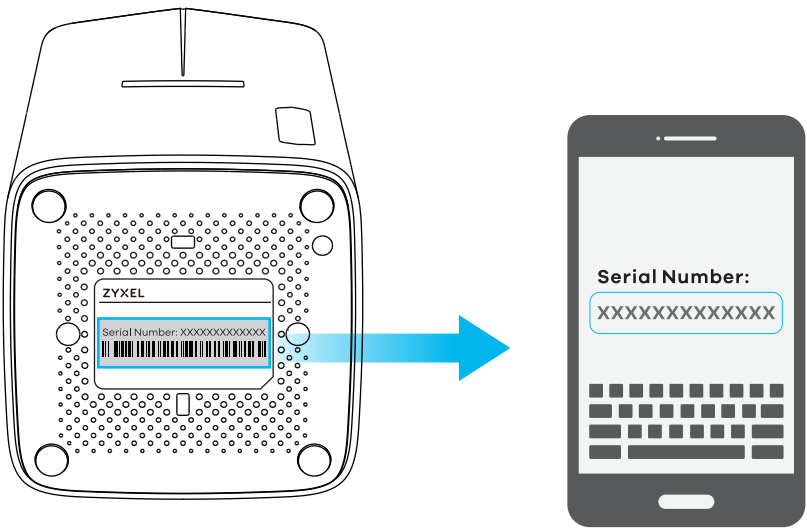


Step 3 App Management

1 After successfully surfing the internet, please download the MPro Mesh™ PLUS app to your wireless device.



2 Open this app and enter the serial number from the EX7710-B0's bottom label.

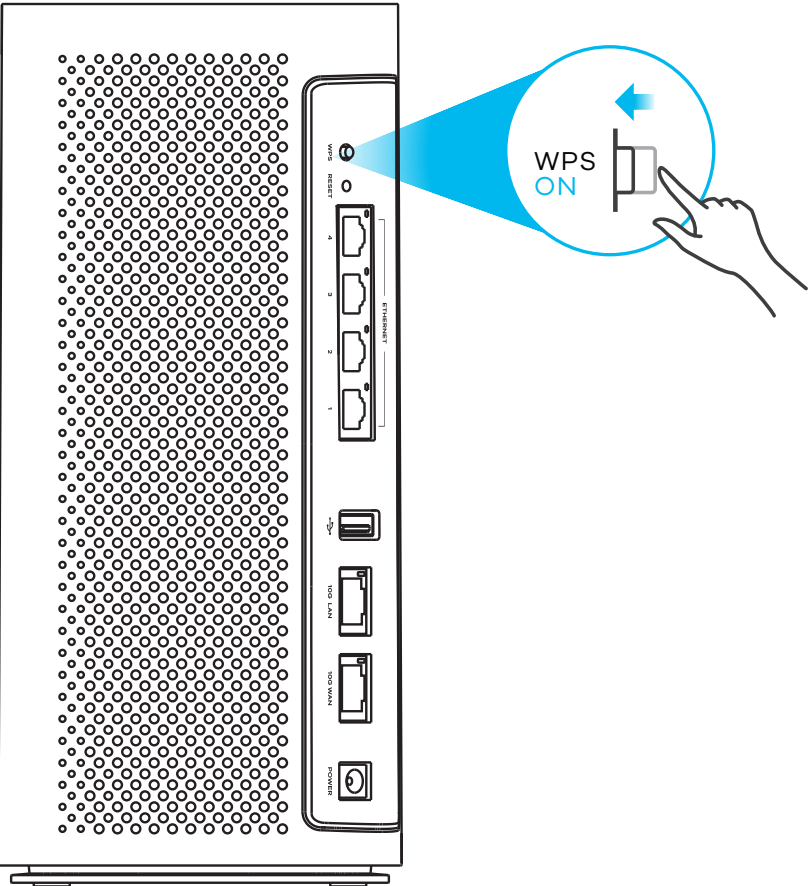


3 Use this app to enjoy the following features:

- Remote Management
- View Home Devices
- Guest Wi-Fi
- Manage Home Wi-Fi Name
- Internet Instant Block
- Add Mesh Extender
- Push Notification

Adding a Wireless Extender

WPS button: If you have a wireless extender to add to your EX7710-B0's WiFi network, press the EX7710-B0's WPS button once, and press the WPS button on your extender within 120 seconds to start the WPS process.



Safety Warning

See the following legal and regulation information at <http://192.168.1.1/legalInfo>.



Regulatory Statements

UNITED STATES of AMERICA



FCC Warning Statement

- This device complies with part 15 of the FCC Rules. Operation is subject to the following two conditions:
 - (1) This device may not cause harmful interference, and
 - (2) This device must accept any interference received, including interference that may cause undesired operation.
- Changes or modifications not expressly approved by the party responsible for compliance could void the user’s authority to operate the equipment.
- This product has been tested and complies with the specifications for a Class B digital device, pursuant to Part 15 of the FCC Rules. These limits are designed to provide reasonable protection against harmful interference in a residential installation. This equipment generates, uses, and can radiate radio frequency energy and, if not installed and used according to the instructions, may cause harmful interference to radio communications. However, there is no guarantee that interference will not occur in a particular installation.
- If this device does cause harmful interference to radio or television reception, which is found by turning the equipment off and on, the user is encouraged to try to correct the interference by one or more of the following measures:
 - Reorient or relocate the receiving antenna
 - Increase the separation between the devices
 - Connect the equipment to an outlet other than the receiver’s
 - Consult a dealer or an experienced radio/TV technician for assistance

FCC regulations restrict the operation of this device to indoor use only.
The operation of this device is prohibited on oil platforms, cars, trains, boats, and aircraft, except that operation of this device is permitted in large aircraft while flying above 10,000 feet.
Operation of transmitters in the 5.925-7.125 GHz band is prohibited for control of or communications with unmanned aircraft systems

FCC Radiation Exposure Statement

- This equipment complies with FCC RF radiation exposure limits set forth for an uncontrolled environment.
- This transmitter must be at least 20 cm from the user and must not be co-located or operating in conjunction with any other antenna or transmitter.
- For 2.4G WLAN, only channels 1-11 are operational. Selection of other channels is not possible.

CANADA

The following information applies if you use the product within Canada.

Innovation, Science and Economic Development Canada ICES statement

CAN ICES-003(B) / NMB-003(B)

Innovation, Science and Economic Development Canada RSS-GEN & RSS-247 Statement

- This device contains licence-exempt transmitter(s)/receiver(s) that comply with Innovation, Scirence and Economic Development Canada's licence-exempt RSS(s). Operation is subject to the following two conditions:
 - (1) this device may not cause interference, and (2) this device must accept any interference, including interference that may cause undesired operation of the device.
- L'émetteurur/récepteur exempt de licence contenu dans le prés ent appareil est conforme aux CNR d'Innovation, Sciences et Développement économique Canada applicables aux appareils radio ex empts de licence. L'exploitation est autorisée aux deux condi tions suivantes: (1) l'appareil ne doit pas produire de brouillage; (2) L'appareil doit accepter tout brouillage radioélectrique su bi, même si le brouillage est susc eptible d'en compromettre le fonctionnement.
- For 2.4 G WLAN, only channels 1-11 are operational. Selection of other channels is NOT possible.
- Pour le WLAN 2,4 G, seuls les canaux 1 à 11 sont opérationnels. La sélection d'autres canaux n'est PAS possible.

- The device operating in the 5150-5250 MHZ band is only for indoor use to reduce the potential for harmful interference to co-channel mobile statellite systems.
- Where applicable, antenna type(s), antenna model(s), and the worst-case tilt angle(s) necessary to remain compliant with the e.i.r.p. elevation mask requirement set force in Section 6.2.2.3 of RSS 247 shall be clearly indicated.
- Les dispositifs fonctionnant dans la bande de 5150 à 5250 MHz so nt réservés uniquement pour une utilisation à l'intérieur af in de réduire les risques de brouillage préjudiciable aux systèmes de satellites mobiles utilisant les mêmes canaux;
- Lorsq'ily a lieu, les types d'antnnes(s'il y en a plusieurs), les numéros de modèle de l'antenne et les pires angles d'inc linaison nécessaires pour rester confirme à la limite de la p.i.r.e. applicable au masque d'élévation, énoncée à la section 6.2.2.3 du CNR-247, doi vent être clairement indiqués.

- a) Operation shall be limited to indoor use only; and
- b) Operation on oil platforms, cars, trains, boats and aircraft shall be prohibited except for on large aircraft flying above 10,000 ft.

- a) Utilisation limitée à l'intérieur seulement;
- b) Utilisation interdite à bord de plateformes de forage pétrolier, de voitures, de trains, de bateaux et d'aéronefs, sauf à bord d'un gros aéronef volant à plus de 10 000 pieds d'altitude.

Industry Canada radiation exposure statement

This equipment complies with ISED radiation exposure limits set forth for an uncontrolled environment. This equipment should be installed and operated with a minimum distance of 31 cm between the radiator and your body.

Déclaration d'exposition aux radiations:

Cet équipement est conforme aux limites d'exposition aux rayonnements ISED établies pour un environnement non contrôlé.Cet équipement doit être installé et utilisé avec un minimum de 31 cm de distance entre la source de rayonnement et votre corps.

Safety Warnings

- DO NOT use this product near water, for example, in a wet basement or near a swimming pool.
- DO NOT expose your device to dampness, dust or corrosive liquids.
- DO NOT store things on the device.
- DO NOT install, use, or service this device during a thunderstorm. There is a remote risk of electric shock from lightning.
- Connect ONLY suitable accessories to the device.
- DO NOT open the device or unit. Opening or removing covers can expose you to dangerous high voltage points or other risks.
- ONLY qualified service personnel should service or disassemble this device. Please contact your vendor for further information.
- Make sure to connect the cables to the correct ports.
- Place connecting cables carefully so that no one will step on them or stumble over them.
- Always disconnect all cables from this device before servicing or disassembling.
- Please use the provided or designated connection cables/power cables/ adaptors. Connect it to the right supply voltage (for example, 110V AC in North America or 230V AC in Europe). If the power adaptor or cord is damaged, it might cause electrocution. Remove it from the device and the power source, repairing the power adapter or cord is prohibited. Contact your local vendor to order a new one.
- DO NOT remove the plug and connect it to a power outlet by itself; always attach the plug to the power adaptor first before connecting it to a power outlet.
- DO NOT allow anything to rest on the power adaptor or cord and do NOT place the product where anyone can walk on the power adaptor or cord.
- DO NOT use the device outside, and make sure all the connections are indoors. There is a remote risk of electric shock from lightning.
- CAUTION: Risk of explosion if battery (on the motherboard) is replaced by an incorrect type. Dispose of used batteries according to the instructions. Dispose of them at the applicable collection point for the recycling of electrical and electronic equipment. For detailed information about recycling of this product, please contact your local city office, your household waste disposal service or the store where you purchased the product.
- DO NOT obstruct the device ventilation slots, as insufficient airflow may harm your device. For example, do not place the device in an enclosed space such as a box or on a very soft surface such as a bed or sofa.
- The following warning statements apply, where the disconnect device is not incorporated in the equipment or where the plug on the power supply cord is intended to serve as the disconnect device,
 - for permanently connected devices, a readily accessible disconnect device shall be incorporated external to the equipment;
 - for pluggable devices, the socket-outlet shall be installed near the equipment and shall be easily accessible.
- Caution! The RJ-45 jacks are not used for telephone line connection.