

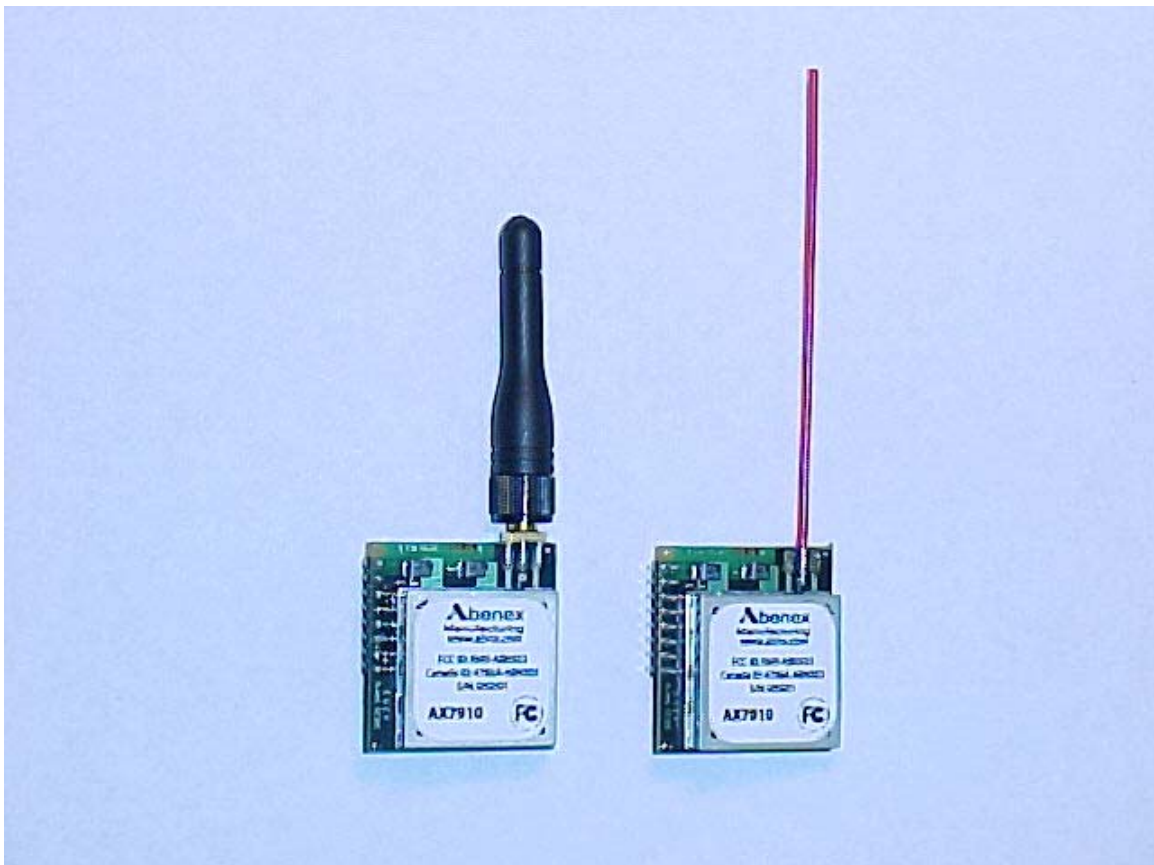
Abenex Manufacturing Division of Actall Corporation

**ALERTx Transceiver Module
902 to 928 MHz Digital Radio**

FCC ID#: RM9-ABNX03

Photo One – External

**Both Modules pictured together.
Antenna types are: Nearson “Rubber Duck” and Wire**



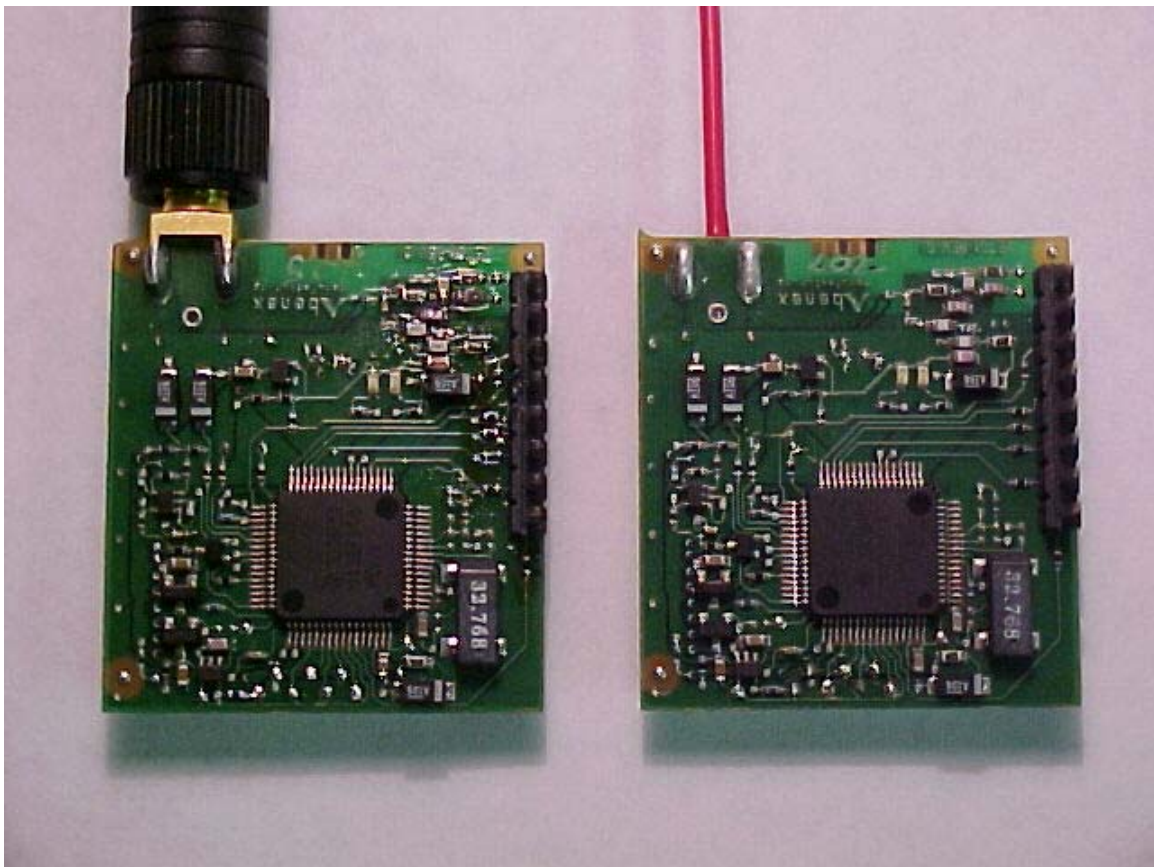
Abenex Manufacturing Division of Actall Corporation

**ALERTx Transceiver Module
902 to 928 MHz Digital Radio**

FCC ID#: RM9-ABNX03

Photo Two – External

**Both Modules pictured together.
Flip side of PCB**



Abenex Manufacturing Division of Actall Corporation

**ALERTx Transceiver Module
902 to 928 MHz Digital Radio**

FCC ID#: RM9-ABNX03

Photo Three – External

FCC ID Label Close-up



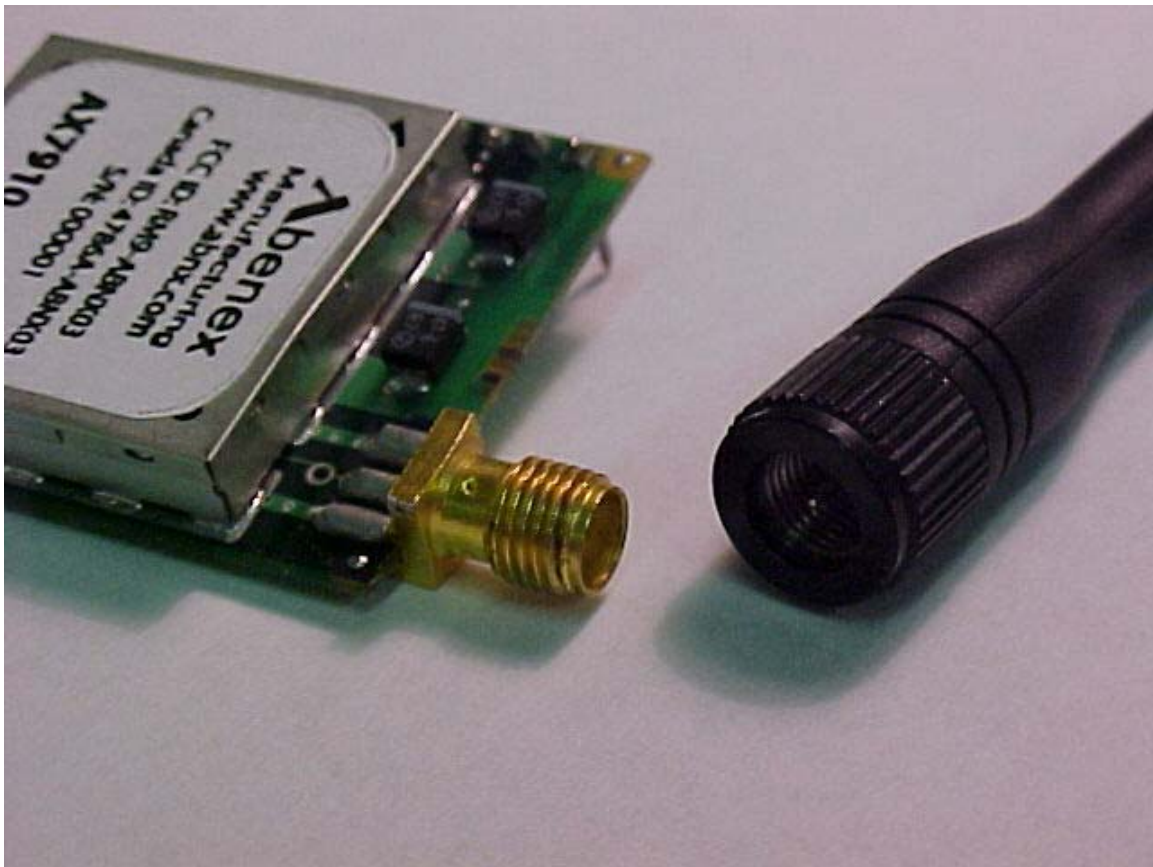
Abenex Manufacturing Division of Actall Corporation

**ALERTx Transceiver Module
902 to 928 MHz Digital Radio**

FCC ID#: RM9-ABNX03

Photo Four – External

Nearson Antenna Connection



Abenex Manufacturing Division of Actall Corporation

**ALERTx Transceiver Module
902 to 928 MHz Digital Radio**

FCC ID#: RM9-ABNX03

Photo Five – External

Wire Antenna Connection

