

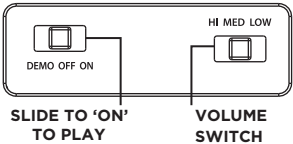


Model: WH-115  
Bluetooth Sing-Along Boombox

FRONT OF UNIT



BACK OF UNIT

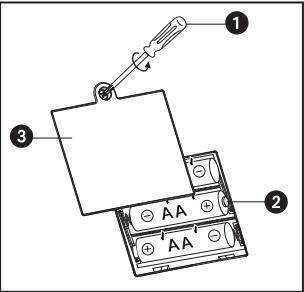


INSTALLING THE BATTERIES

Batteries should only be installed by an adult.

The unit comes with batteries already installed. These batteries are meant for in-store demonstration use only, and should be replaced with fresh batteries. To replace the batteries at home:

1. Use a Phillips screwdriver to open the battery compartment door.
2. Install 3 'AA' LR6 batteries into the compartment. Make sure the + and - polarities match the diagram printed inside.
3. Close the battery compartment door and tighten the door screw. Do not over tighten.



BLUETOOTH PAIRING

- Press the Power Button to turn the unit ON.
- Press and hold the Bluetooth Mode Button to enter pairing mode.

Select 'WH-115' on your Bluetooth-enabled device to connect. Once connected, use the controls on your device to play/pause and navigate tracks.

USING THE MICROPHONE

Press and hold the button on the microphone to amplify your voice while you sing along!

FCC ID: EMO115A  
IC: 986B-115A  
HVIN: XX-115a

FCC Information

This equipment complies with FCC RF radiation exposure limits set forth for an uncontrolled environment. **This device complies with Part 15 of the FCC Rules, operation is subject to the following two conditions: (1) This device may not cause harmful interference, and (2) this device must accept any interference received, including interference that may cause undesired operation.**

- Warning: Changes or modifications to this unit not expressly approved by the party responsible for compliance could void the user's authority to operate the equipment.
- NOTE: This equipment has been tested and found to comply with the limits for a Class B digital device, pursuant to Part 15 of the FCC Rules.

These limits are designed to provide reasonable protection against harmful interference in a residential installation. This equipment generates, uses and can radiate radio frequency energy and, if not installed and used in accordance with the instructions, may cause harmful interference to radio communications. However, there is no guarantee that interference will not occur in a particular installation. If this equipment does cause harmful interference to radio or television reception, which can be determined by turning the equipment off and on, the user is encouraged to try to correct the interference by one or more of the following measures:

- Reorient or relocate the receiving antenna.
- Increase the separation between the equipment and receiver.
- Connect the equipment into an outlet on a circuit different from that to which the receiver is connected.
- Consult the dealer or an experienced radio/TV technician for help.

CAN ICES-3 (B) / NMB-3(B)

ISED statements

This equipment complies with IC RSS-102 radiation exposure limits set forth for an uncontrolled environment. This device contains licence-exempt transmitter(s)/receiver(s) that comply with Innovation, Science and Economic Development Canada's licence-exempt RSS(s). Operation is subject to the following two conditions: (1) This device may not cause interference. (2) This device must accept any interference, including interference that may cause undesired operation of the device.

This device comply with ISED RF exposure requirement, users can obtain Canadian information on RF exposure and compliance.

Any Changes or modifications not expressly approved by the party responsible for compliance could void the user's authority to operate the equipment.

Cet équipement est conforme aux limites d'exposition aux radiations IC CNR-102 établies pour un environnement non contrôlé. L'émetteur/récepteur exempt de licence contenu dans le présent appareil est conforme aux CNR d'Innovation, Sciences et Développement économique Canada applicables aux appareils radio exempts de licence. L'exploitation est autorisée aux deux conditions suivantes :

- (1) L'appareil ne doit pas produire de brouillage;
- (2) L'appareil doit accepter tout brouillage radioélectrique subi, même si le brouillage est susceptible d'en compromettre le fonctionnement.

L'appareil est conforme aux exigences d'exposition RF ISED, les utilisateurs peuvent obtenir des informations canadiennes sur l'exposition aux RF et la conformité.

Tout changement ou modification non expressément approuvé par la partie responsable de la conformité pourrait annuler le droit de l'utilisateur à utiliser l'équipement.

ONE YEAR LIMITED WARRANTY

For product support and warranty please visit: [www.ekids.com/support](http://www.ekids.com/support)

Questions? Visit [www.ekids.com](http://www.ekids.com)