



Conducted Emission Method

Test Result

TestMode	Antenna	Frequency[MHz]	FreqRange [MHz]	RefLevel [dBm]	Result [dBm]	Limit [dBm]	Verdict
DH5	Ant1	2402	0~Reference	0.73	0.73	---	PASS
DH5	Ant1	2402	30~1000	0.73	-56.74	≤-19.27	PASS
DH5	Ant1	2402	1000~26500	0.73	-40.97	≤-19.27	PASS
DH5	Ant1	2441	0~Reference	0.20	0.20	---	PASS
DH5	Ant1	2441	30~1000	0.20	-56.76	≤-19.8	PASS
DH5	Ant1	2441	1000~26500	0.20	-40.99	≤-19.8	PASS
DH5	Ant1	2480	0~Reference	1.21	1.21	---	PASS
DH5	Ant1	2480	30~1000	1.21	-56.59	≤-18.79	PASS
DH5	Ant1	2480	1000~26500	1.21	-41.97	≤-18.79	PASS
2DH5	Ant1	2402	0~Reference	0.86	0.86	---	PASS
2DH5	Ant1	2402	30~1000	0.86	-56.59	≤-19.14	PASS
2DH5	Ant1	2402	1000~26500	0.86	-41.86	≤-19.14	PASS
2DH5	Ant1	2441	0~Reference	0.12	0.12	---	PASS
2DH5	Ant1	2441	30~1000	0.12	-56.8	≤-19.88	PASS
2DH5	Ant1	2441	1000~26500	0.12	-39.29	≤-19.88	PASS
2DH5	Ant1	2480	0~Reference	1.49	1.49	---	PASS
2DH5	Ant1	2480	30~1000	1.49	-55.61	≤-18.51	PASS
2DH5	Ant1	2480	1000~26500	1.49	-40.97	≤-18.51	PASS
3DH5	Ant1	2402	0~Reference	1.46	1.46	---	PASS
3DH5	Ant1	2402	30~1000	1.46	-56.22	≤-18.54	PASS
3DH5	Ant1	2441	0~Reference	-2.51	-2.51	---	PASS
3DH5	Ant1	2441	30~1000	-2.51	-56.72	≤-22.51	PASS
3DH5	Ant1	2441	1000~26500	-2.51	-40.33	≤-22.51	PASS
3DH5	Ant1	2480	0~Reference	-1.01	-1.01	---	PASS
3DH5	Ant1	2480	30~1000	-1.01	-57.08	≤-21.01	PASS
3DH5	Ant1	2480	1000~26500	-1.01	-40.49	≤-21.01	PASS
3DH5	Ant1	2402	1000~26500	1.46	-40.43	≤-18.54	PASS



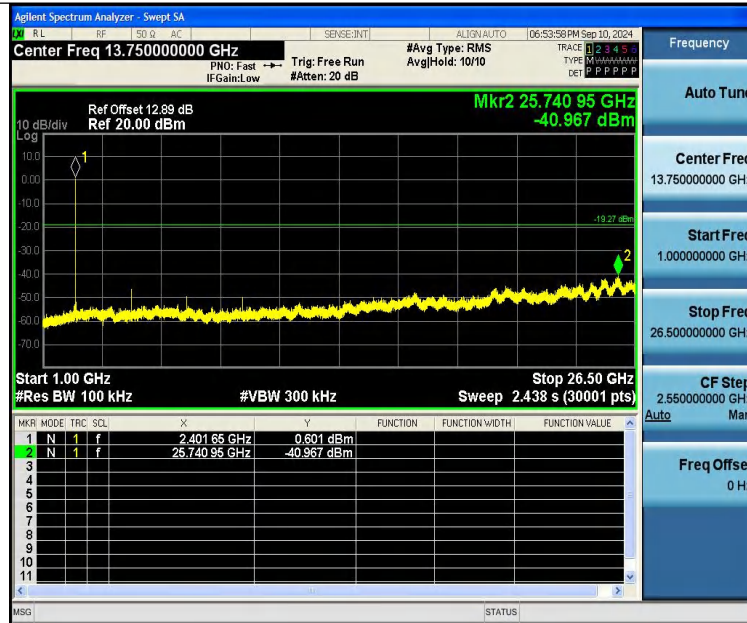
Test Graphs:



DH5-Ant1-2402-0~Reference-PASS



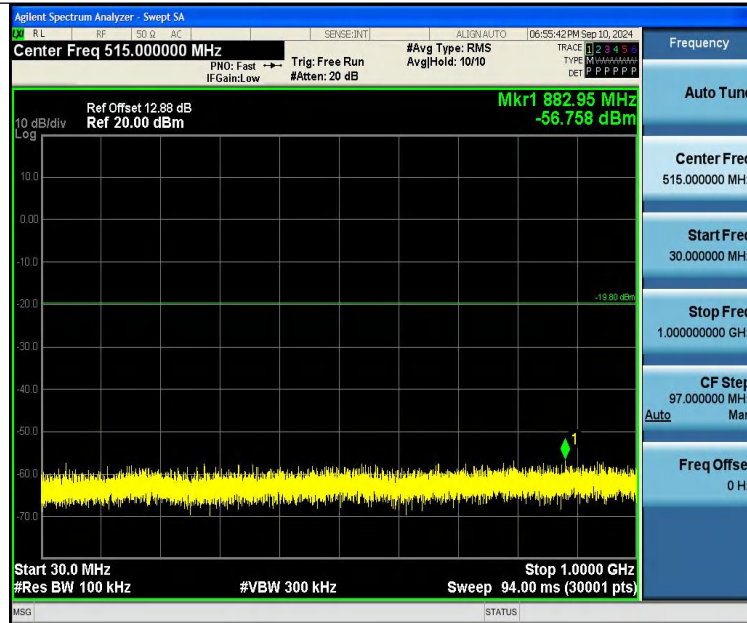
DH5-Ant1-2402-30~1000-PASS



DH5-Ant1-2402-1000~26500-PASS



DH5-Ant1-2441-0~Reference-PASS



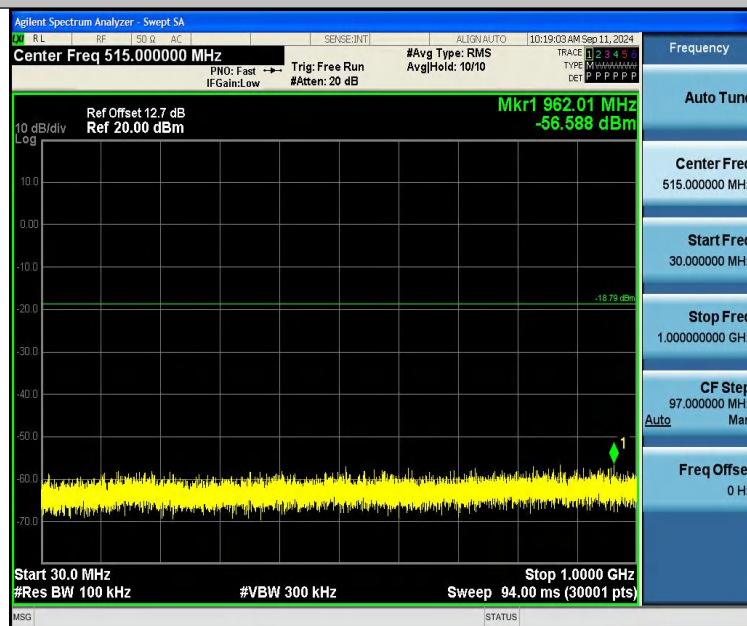
DH5-Ant1-2441-30~1000-PASS



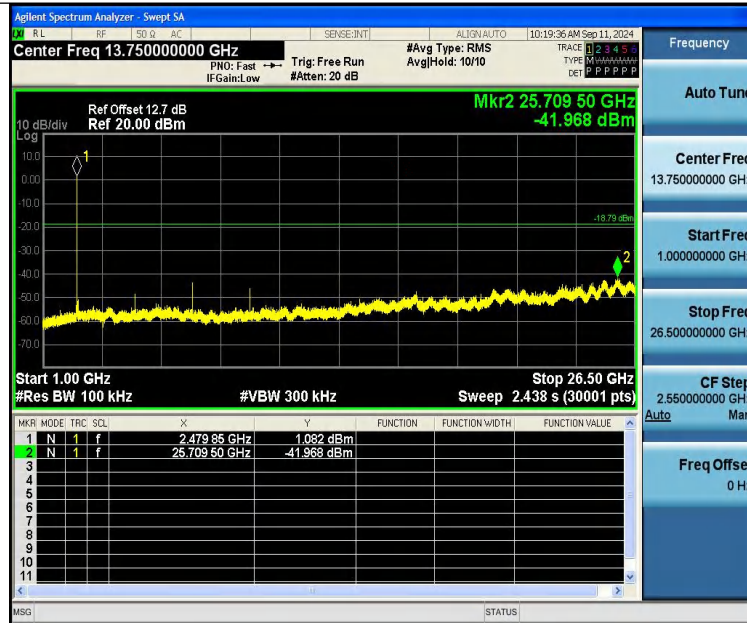
DH5-Ant1-2441-1000~26500-PASS



DH5-Ant1-2480-0~Reference-PASS



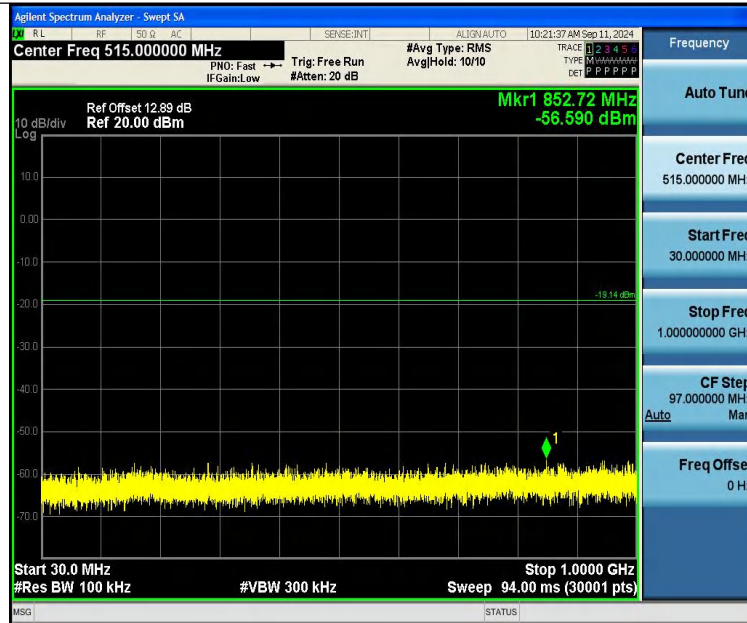
DH5-Ant1-2480-30~1000-PASS



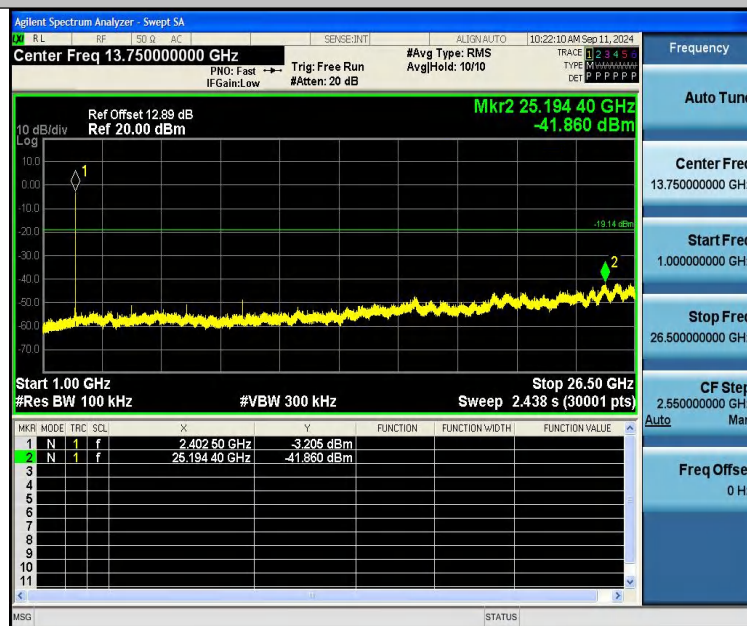
DH5-Ant1-2480-1000~26500-PASS



2DH5-Ant1-2402-0~Reference-PASS



2DH5-Ant1-2402-30~1000-PASS



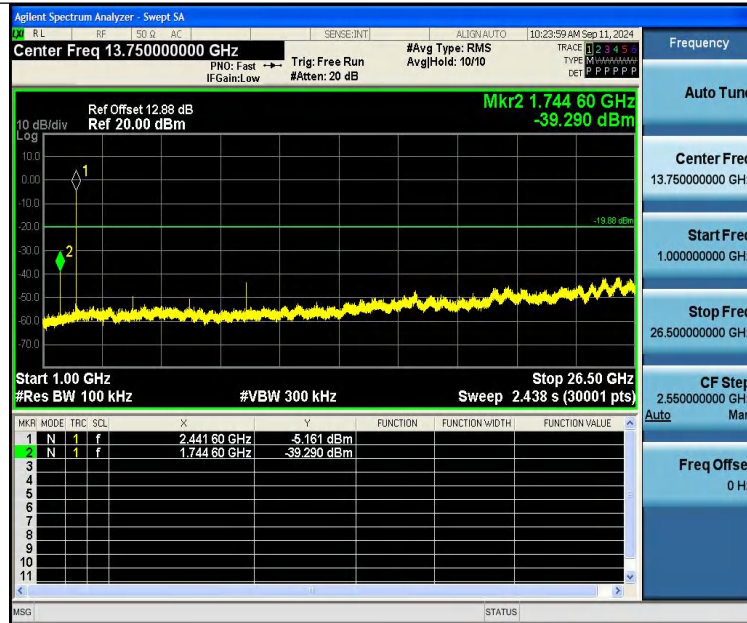
2DH5-Ant1-2402-1000~26500-PASS



2DH5-Ant1-2441-0~Reference-PASS



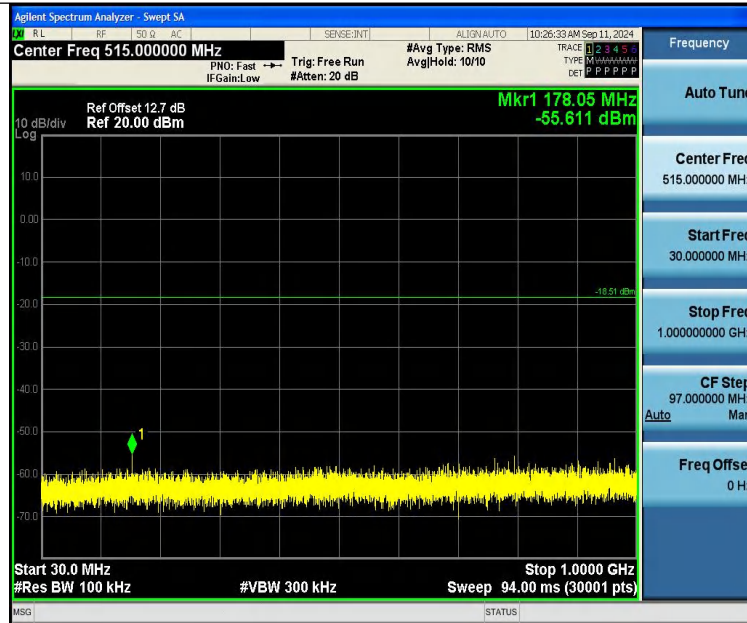
2DH5-Ant1-2441-30~1000-PASS



2DH5-Ant1-2441-1000~26500-PASS



2DH5-Ant1-2480-0~Reference-PASS



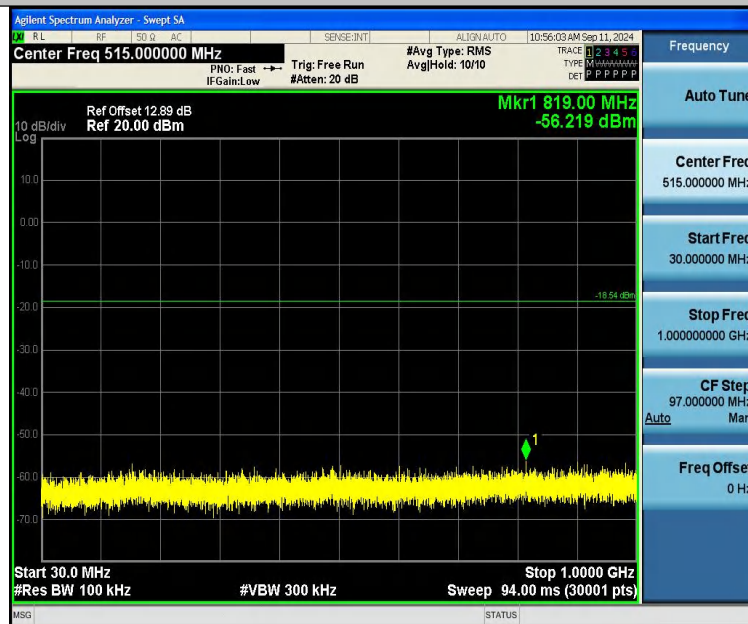
2DH5-Ant1-2480-30~1000-PASS



2DH5-Ant1-2480-1000~26500-PASS



3DH5-Ant1-2402-0~Reference-PASS



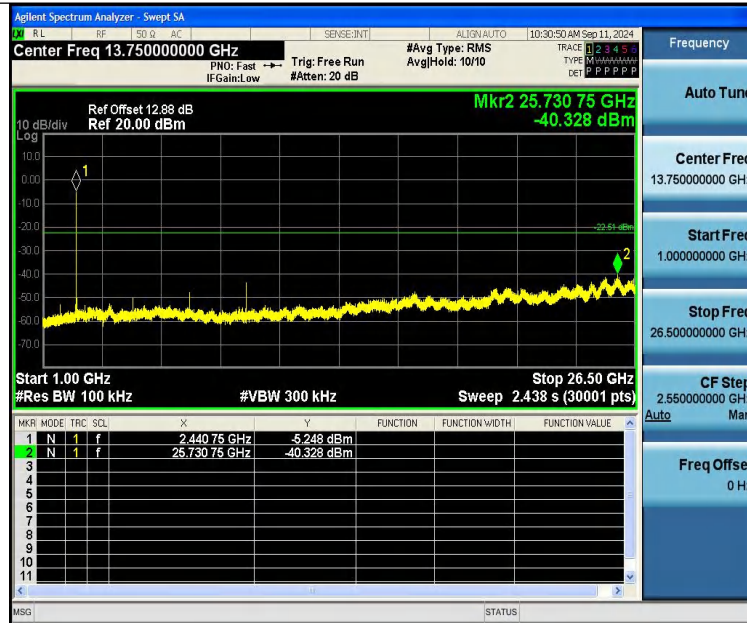
3DH5-Ant1-2402-30~1000-PASS



3DH5-Ant1-2441-0~Reference-PASS



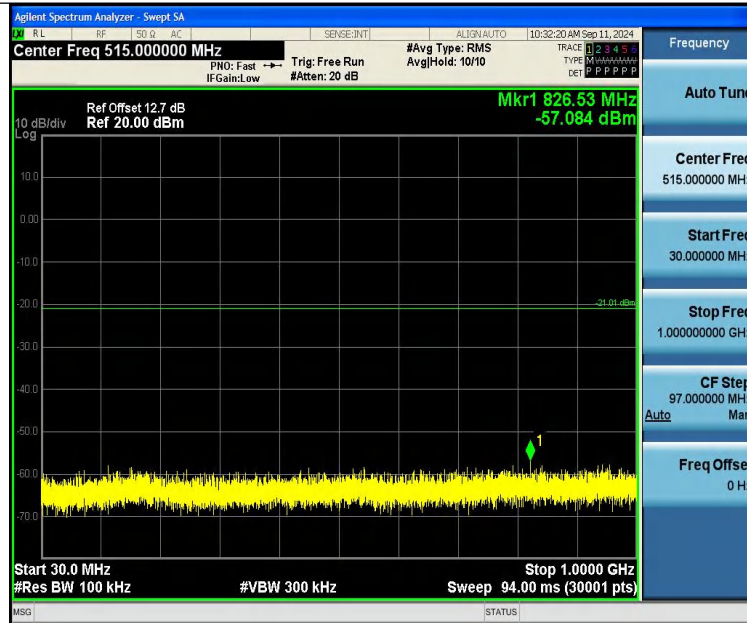
3DH5-Ant1-2441-30~1000-PASS



3DH5-Ant1-2441-1000~26500-PASS



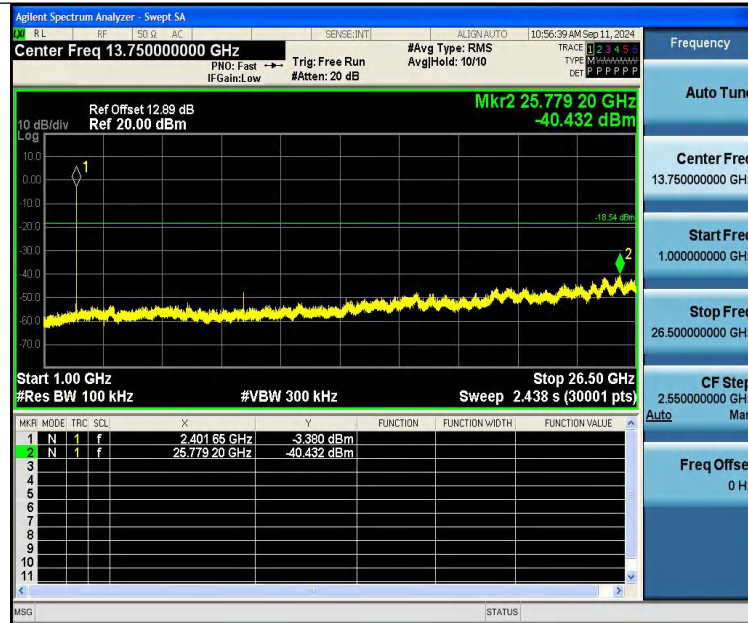
3DH5-Ant1-2480-0~Reference-PASS



3DH5-Ant1-2480-30~1000-PASS



3DH5-Ant1-2480-1000~26500-PASS



3DH5-Ant1-2402-1000~26500-PASS



14 Antenna Requirement

14.1 Test Standard and Requirement

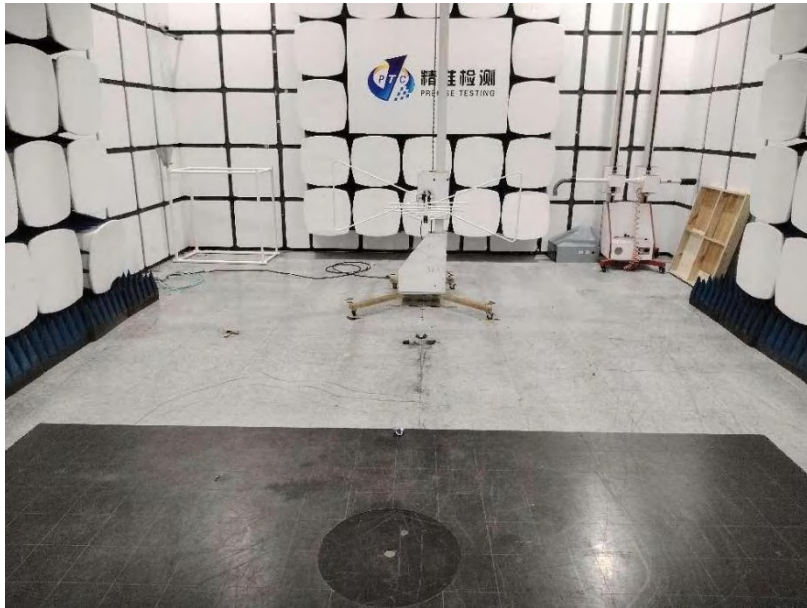
Test Standard	FCC Part15 Section 15.203 /247(c)
Requirement	<p>1) 15.203 requirement:</p> <p>An intentional radiator shall be designed to ensure that no antenna other than that furnished by the responsible party shall be used with the device. The use of a permanently attached antenna or of an antenna that uses a unique coupling to the intentional radiator, the manufacturer may design the unit so that a broken antenna can be replaced by the user, but the use of a standard antenna jack or electrical connector is prohibited.</p> <p>2) 15.247(c) (1)(i) requirement:</p> <p>Systems operating in the 2400-2483.5 MHz band that is used exclusively for fixed. Point-to-point operations may employ transmitting antennas with directional gain greater than 6dBi provided the maximum conducted output power of the intentional radiator is reduced by 1 dB for every 3 dB that the directional gain of the antenna exceeds 6 dBi.</p>

14.2 Antenna Connected Construction

The antenna is Ceramic Antenna which permanently attached, and the best case gain of the antenna is 2.78 dBi. It complies with the standard requirement.

15 APPENDIX I -- TEST SETUP PHOTOGRAPH

Radiated Emissions
From 30M-1GHz



Above 1GHz



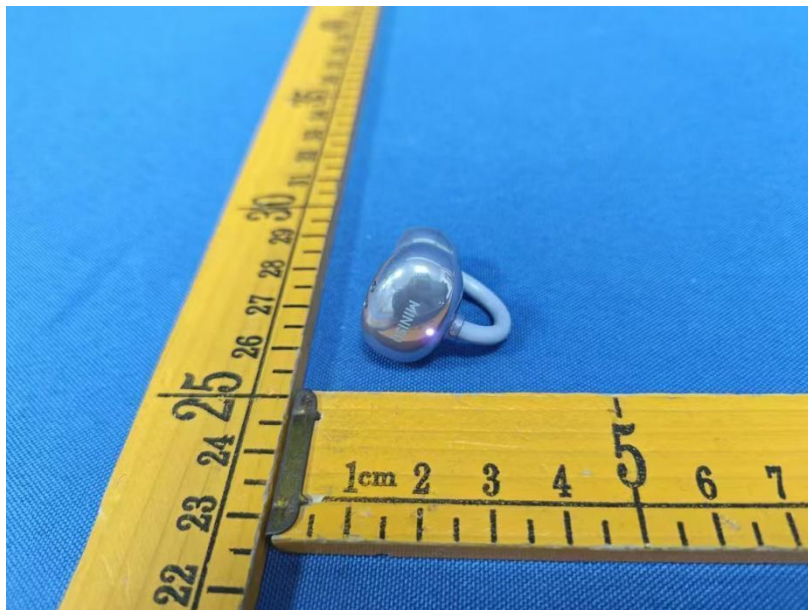
16 APPENDIX II -- EUT PHOTOGRAPH

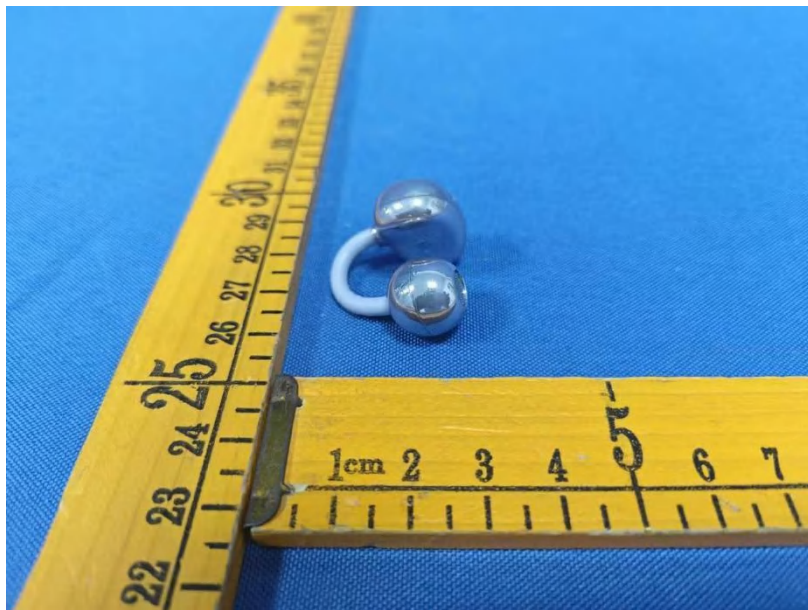


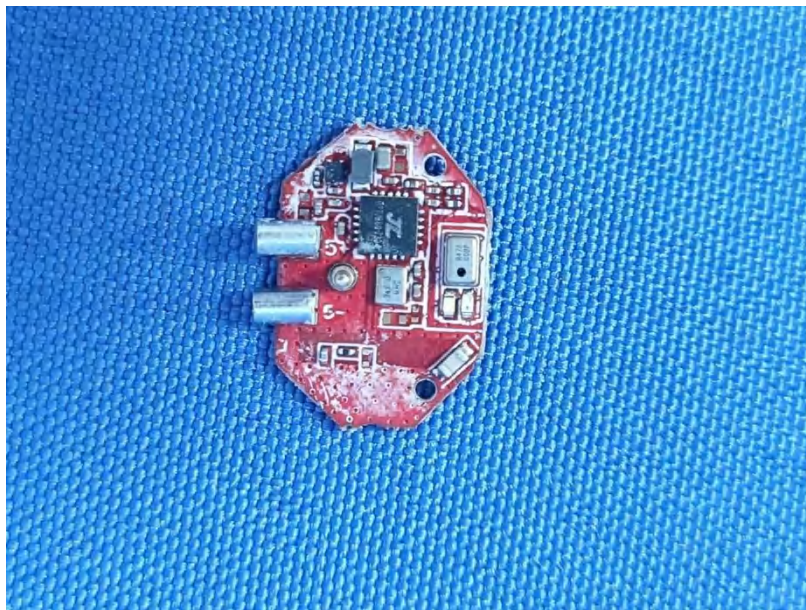
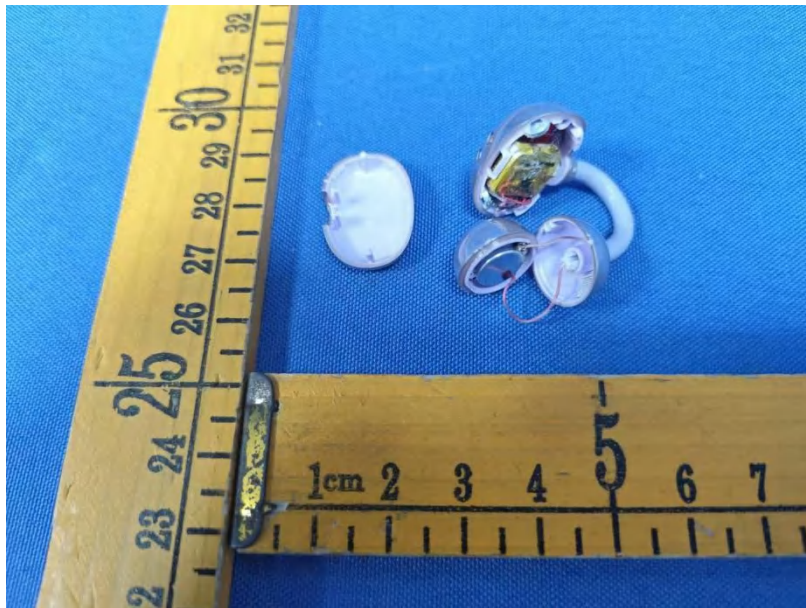


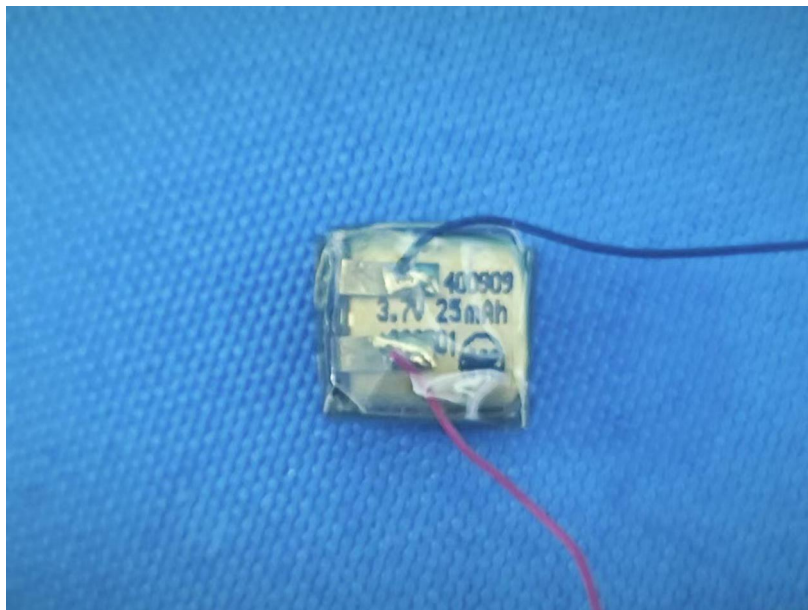
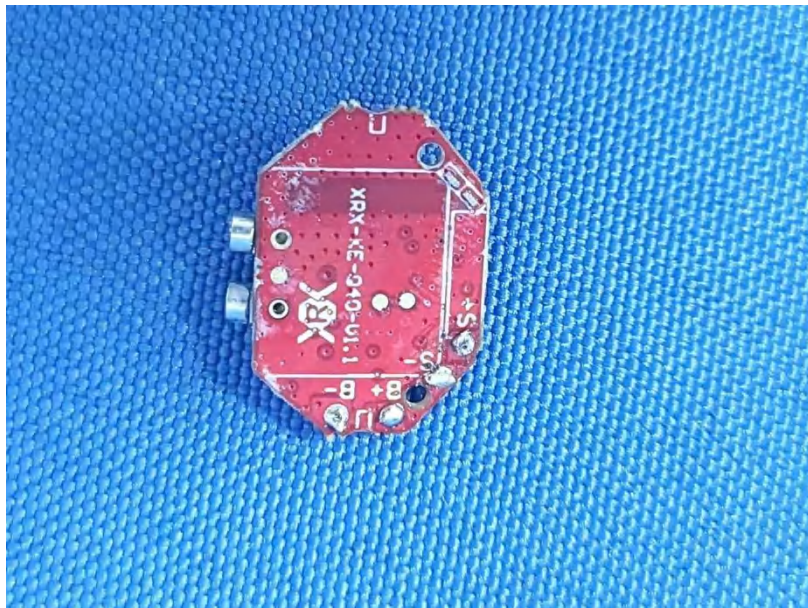
L:

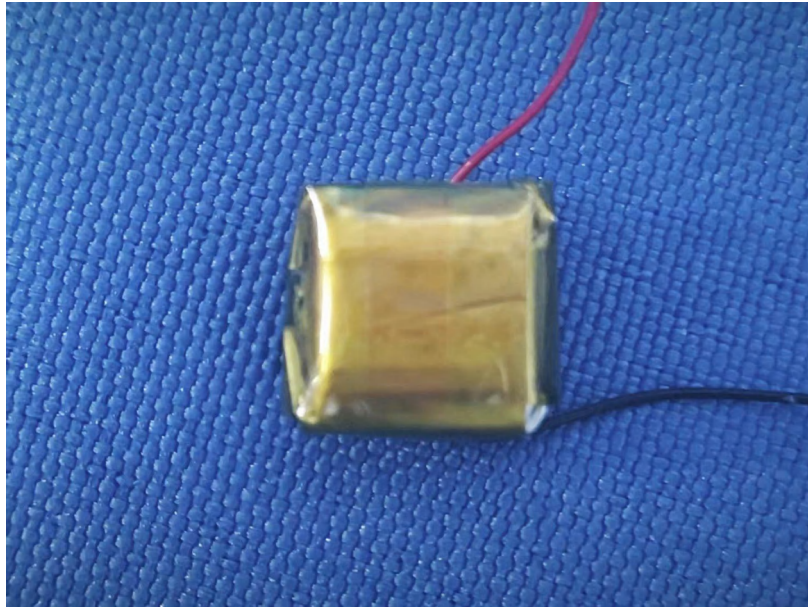








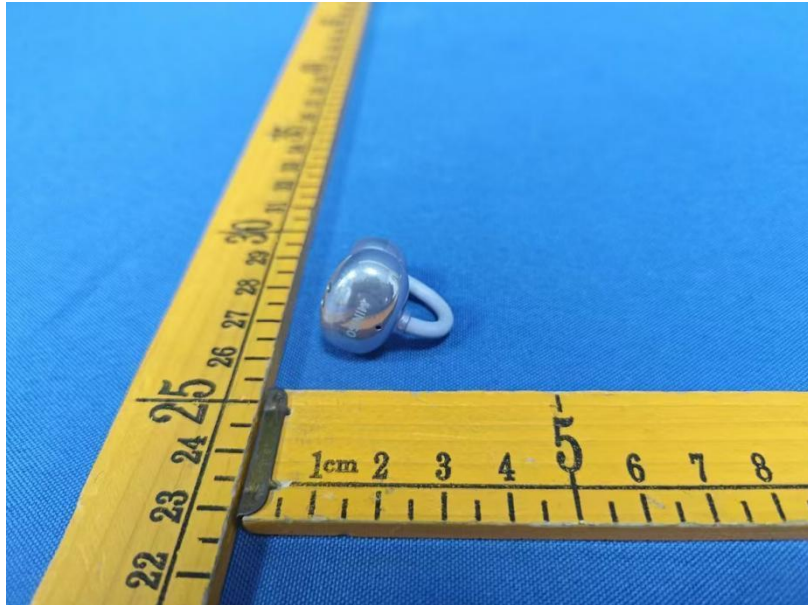


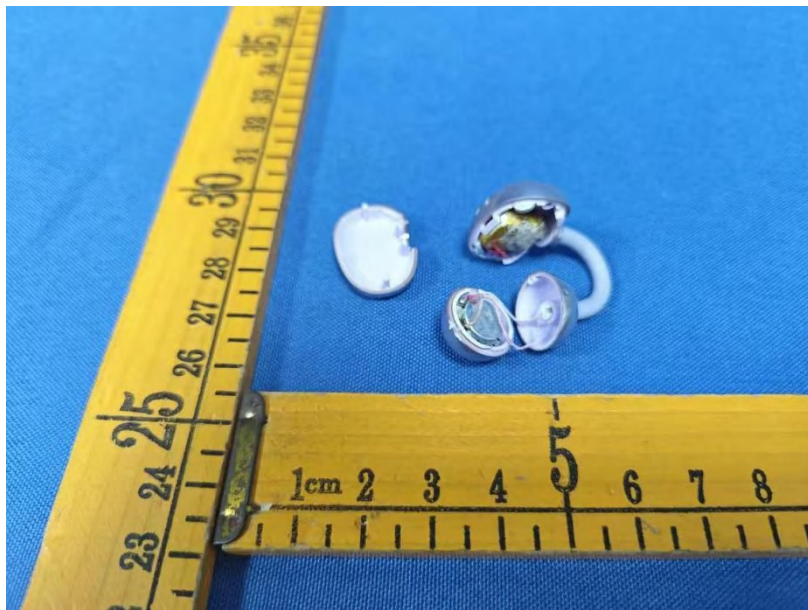
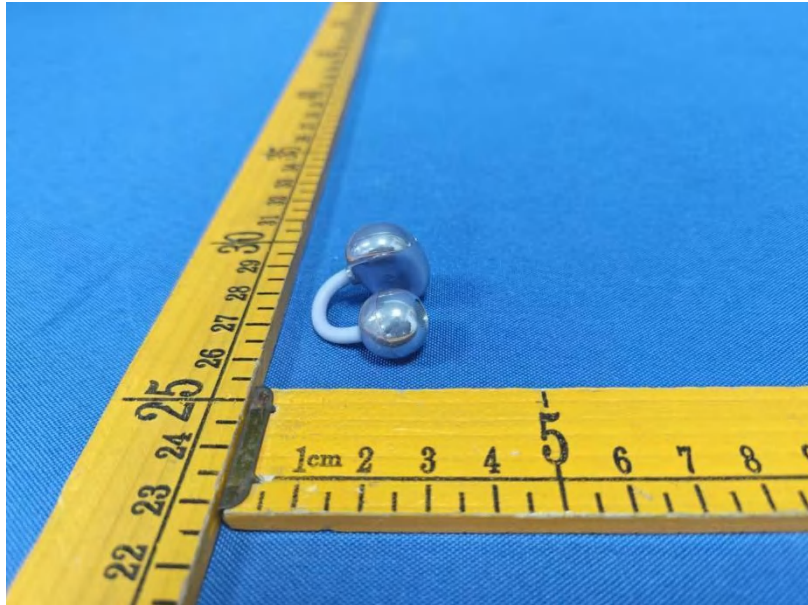


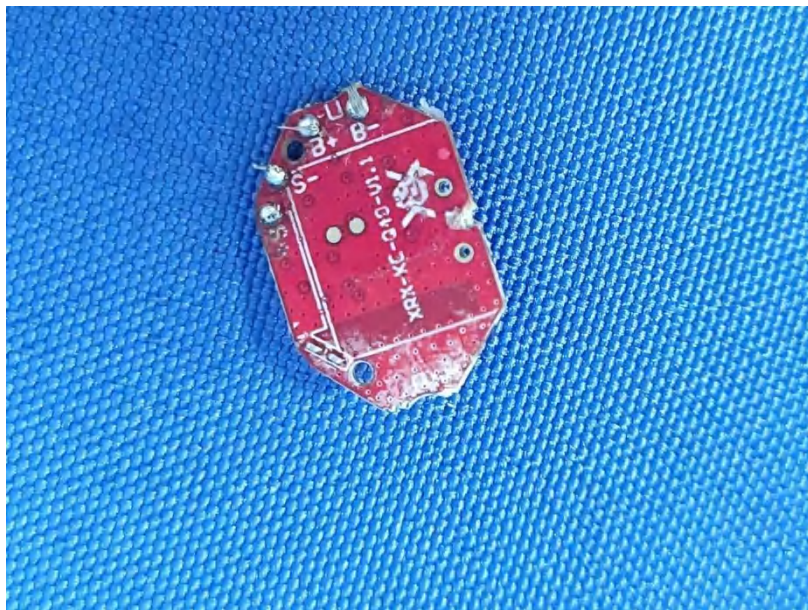
R:

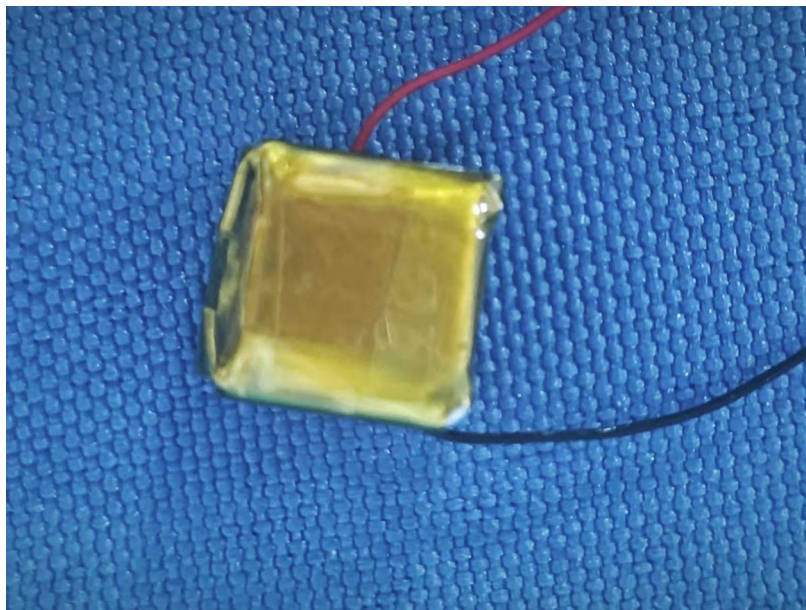
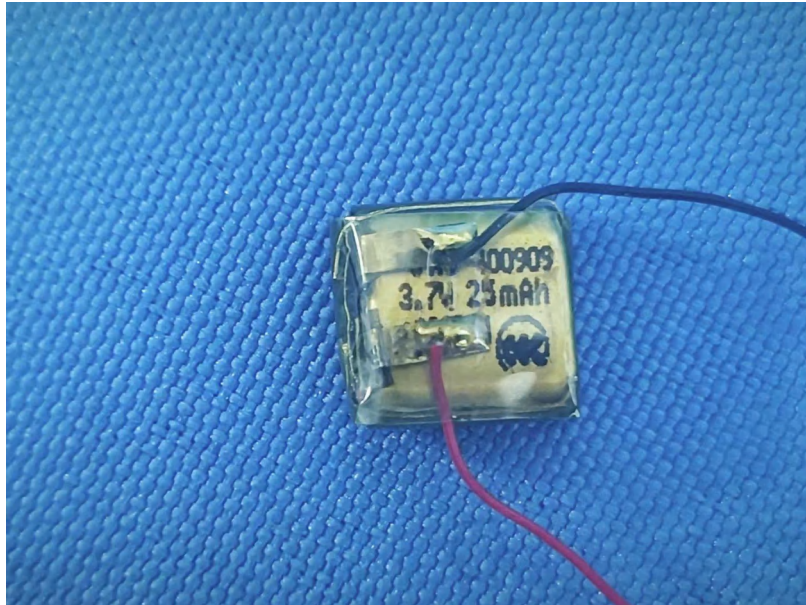












*****THE END REPORT*****