



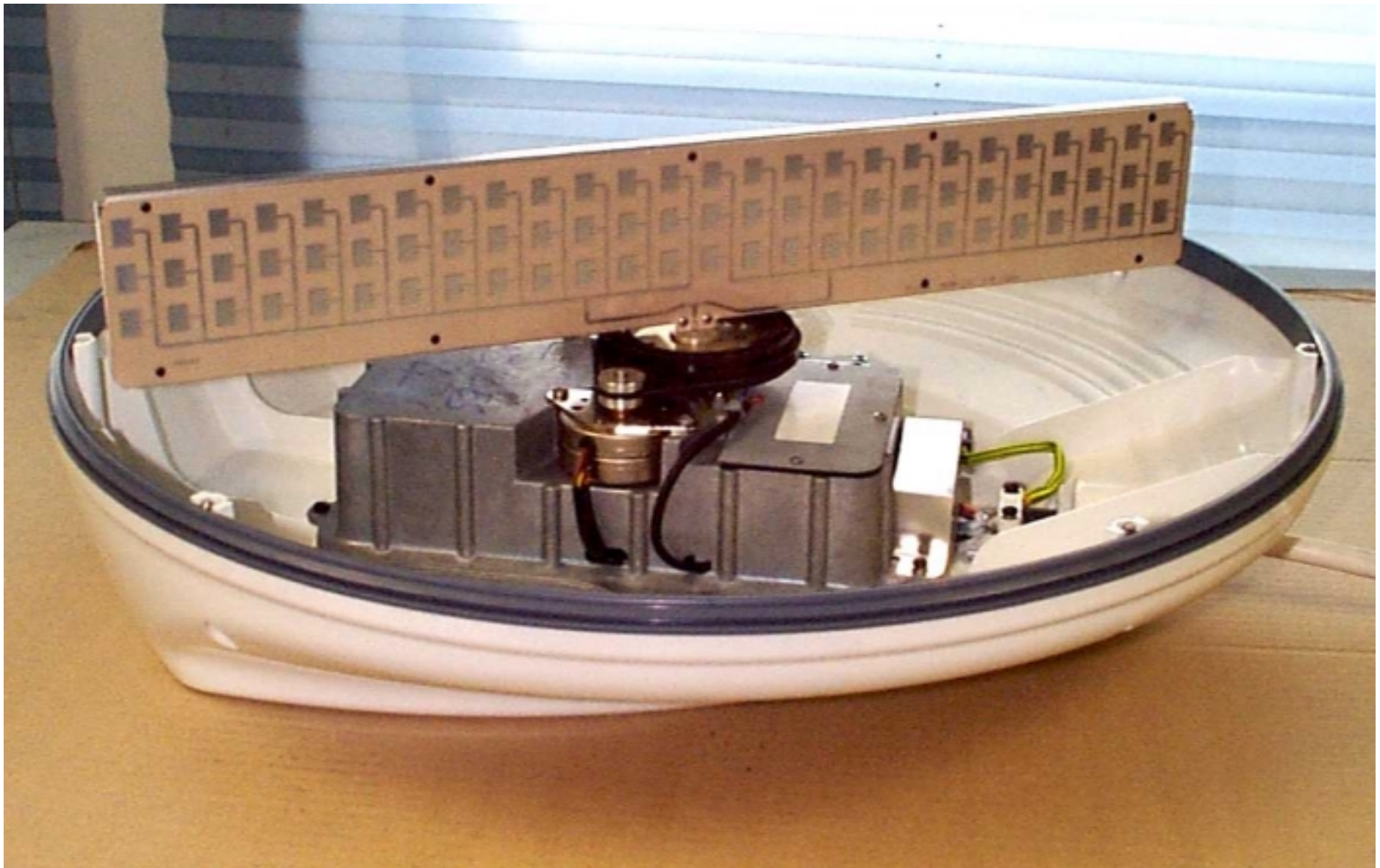
**Raymarine Limited**

**Raytheon Pathfinder  
Series Radar**

Photographs –Internal

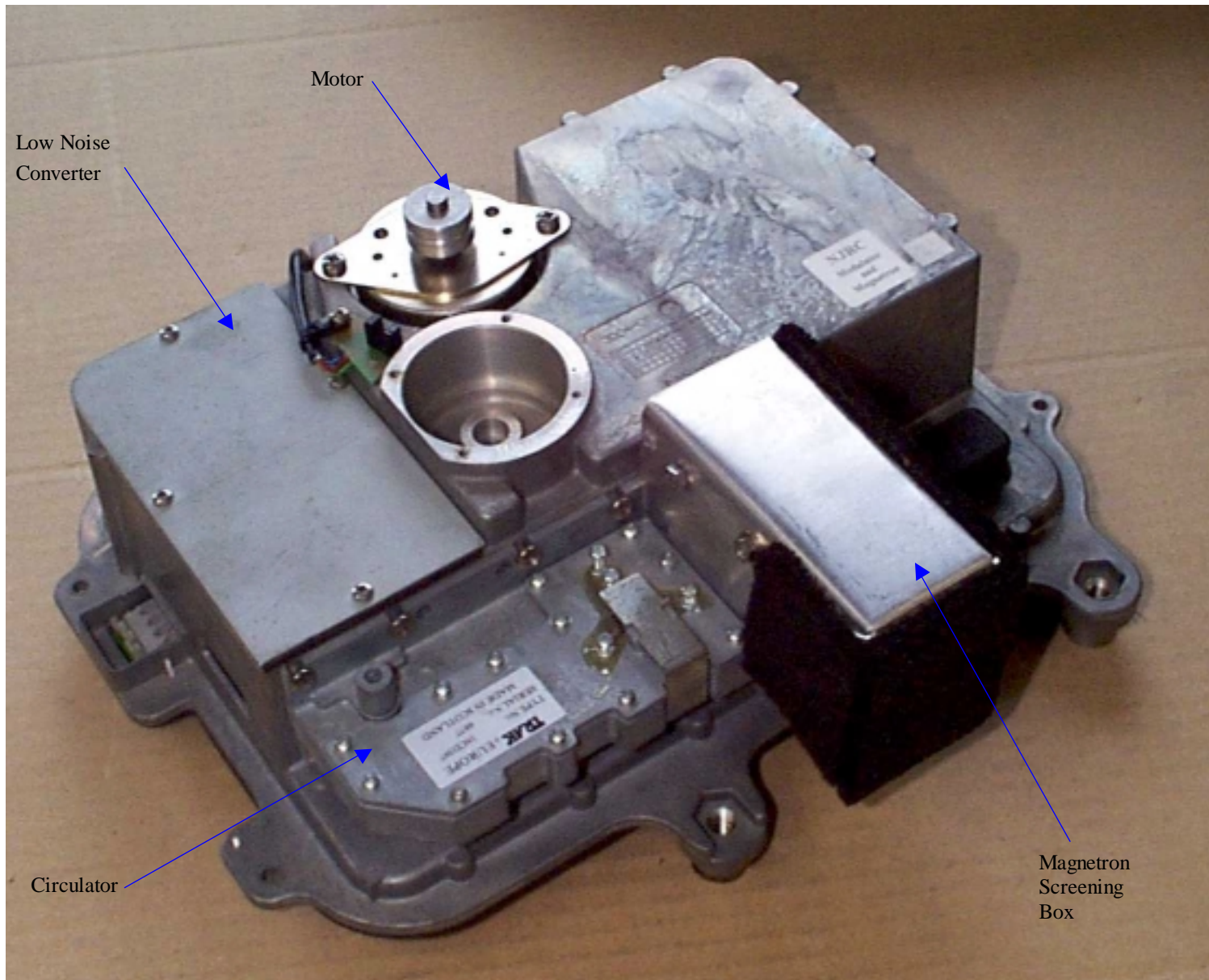
FCC ID: PJ5MTX4-8P

4kW 8-Pulse Width Radome Scanner Unit



**4D – 4Kw (8-Pulse width), 24" Radome Scanner Unit**

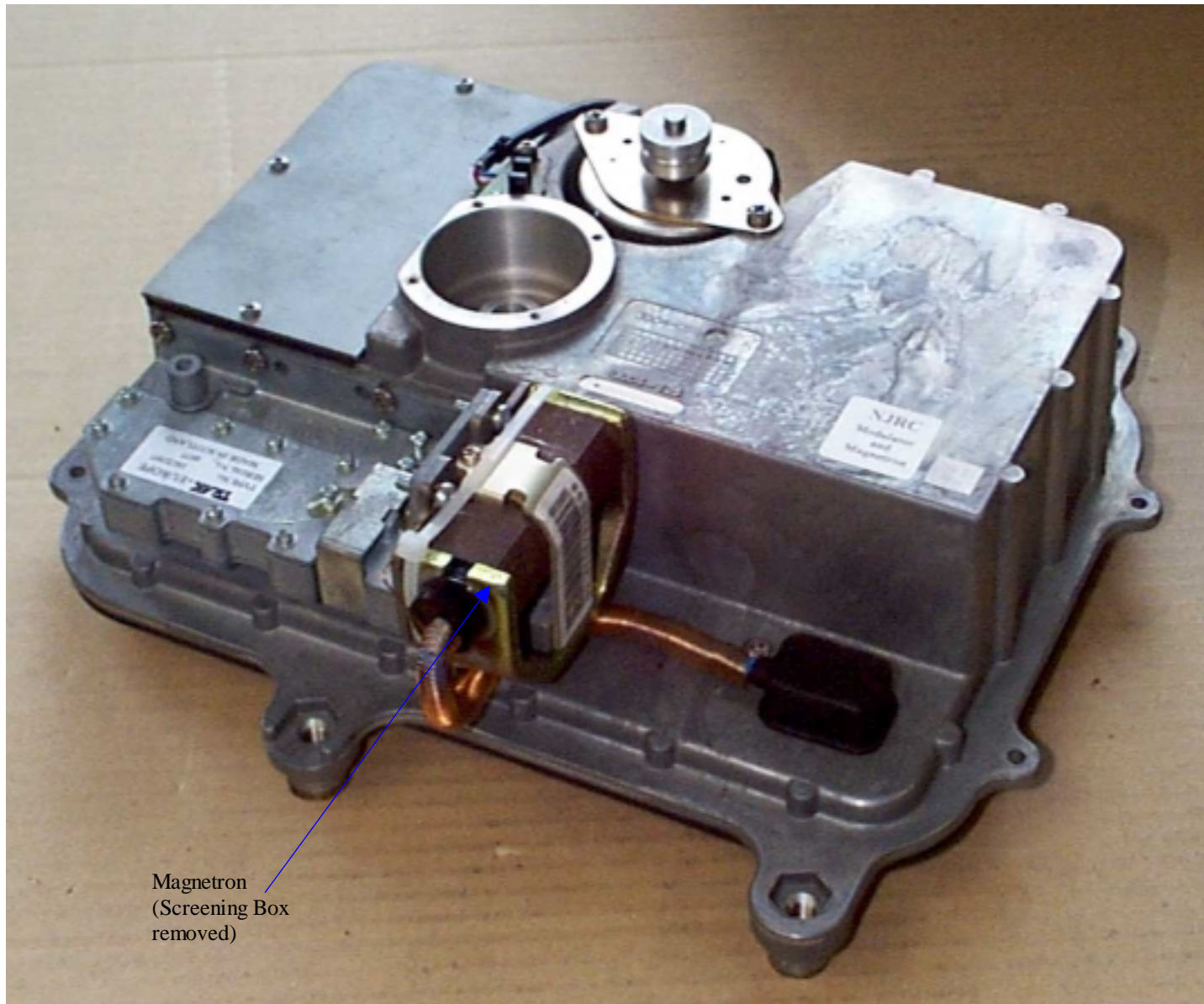
Raymarine Limited, Anchorage Park, Portsmouth, England



**4D – 4kW (8-Pulse Width), 24" Radome Scanner Unit**

Top view of Core





Magnetron  
(Screening Box  
removed)

**4D – 4kW (8-Pulse Width), 24'' Radome Scanner Unit**

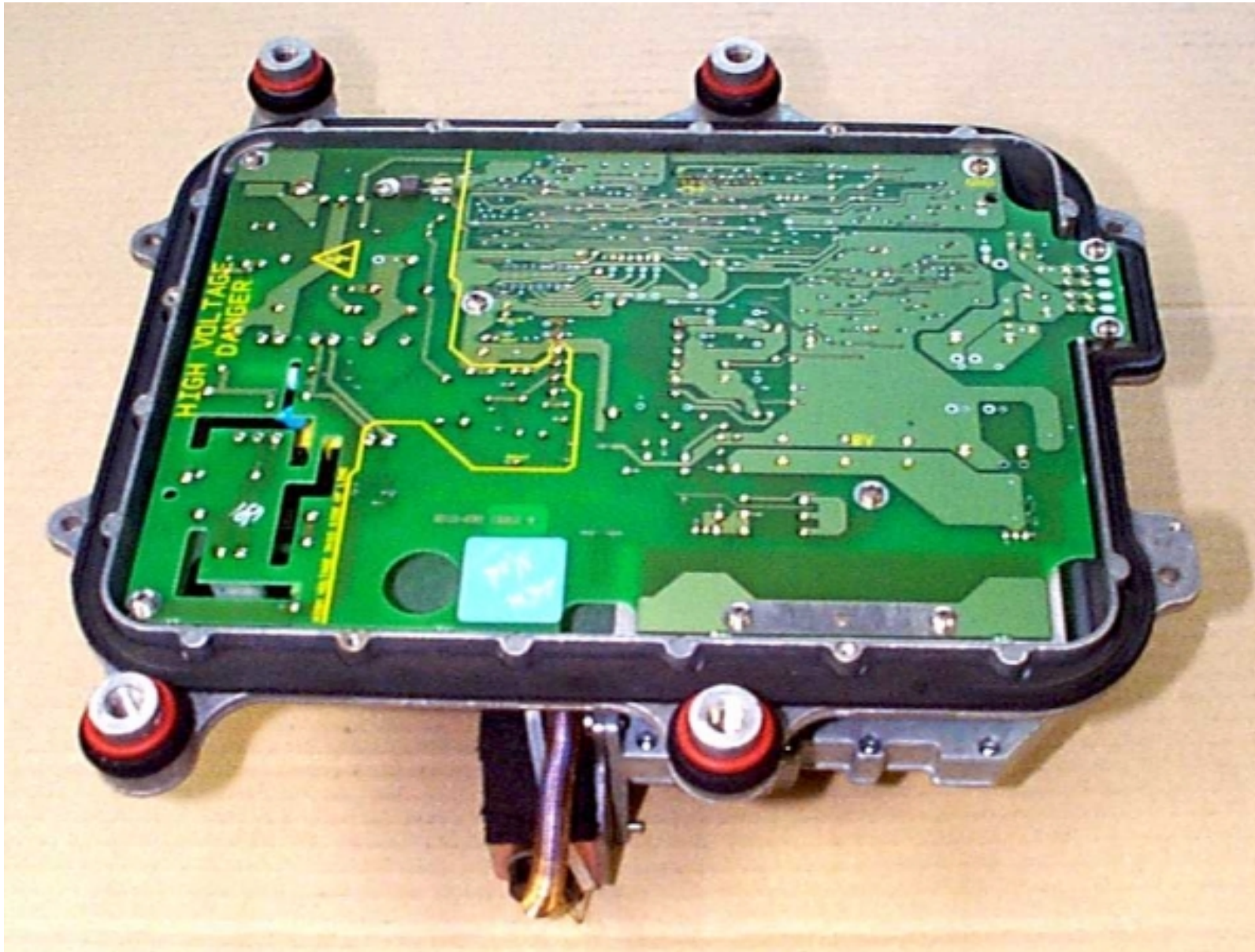
Top view of Core



**4D – 4kW (8-Pulse Width), 24" Radome Scanner Unit**

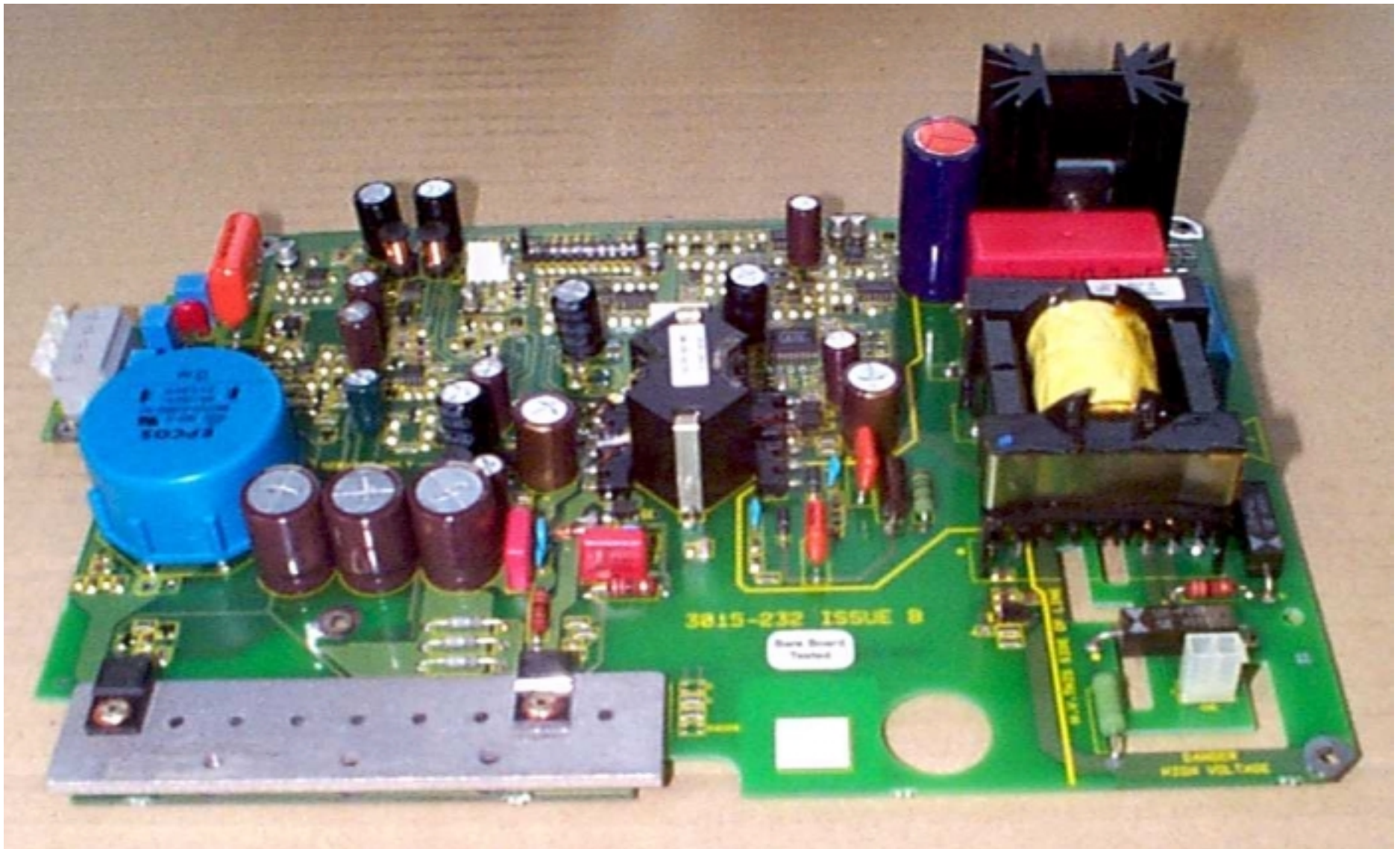
Under view of core





**4D – 4kW (8Pulse Width), 24" Radome Scanner Unit**

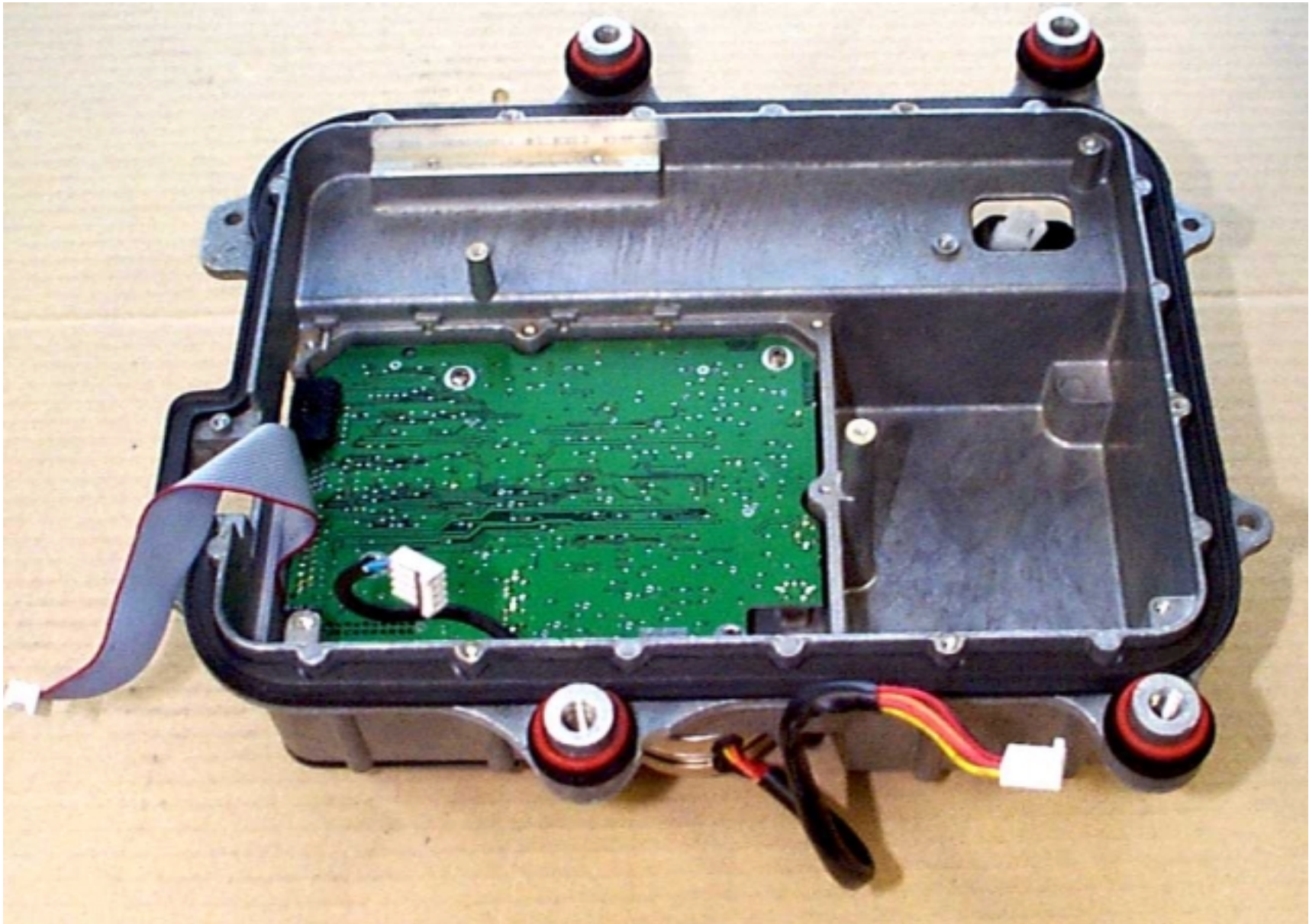
Underside of Modulator PCB, with screening plate removed



**4D – 4kW (8-Pulse Width), 24" Radome Scanner Unit**

**Modulator PCB**





**4D – 4kW (8-Pulse Width), 24" Radome Scanner Unit**

Underside of IF PCB, with screening plate removed

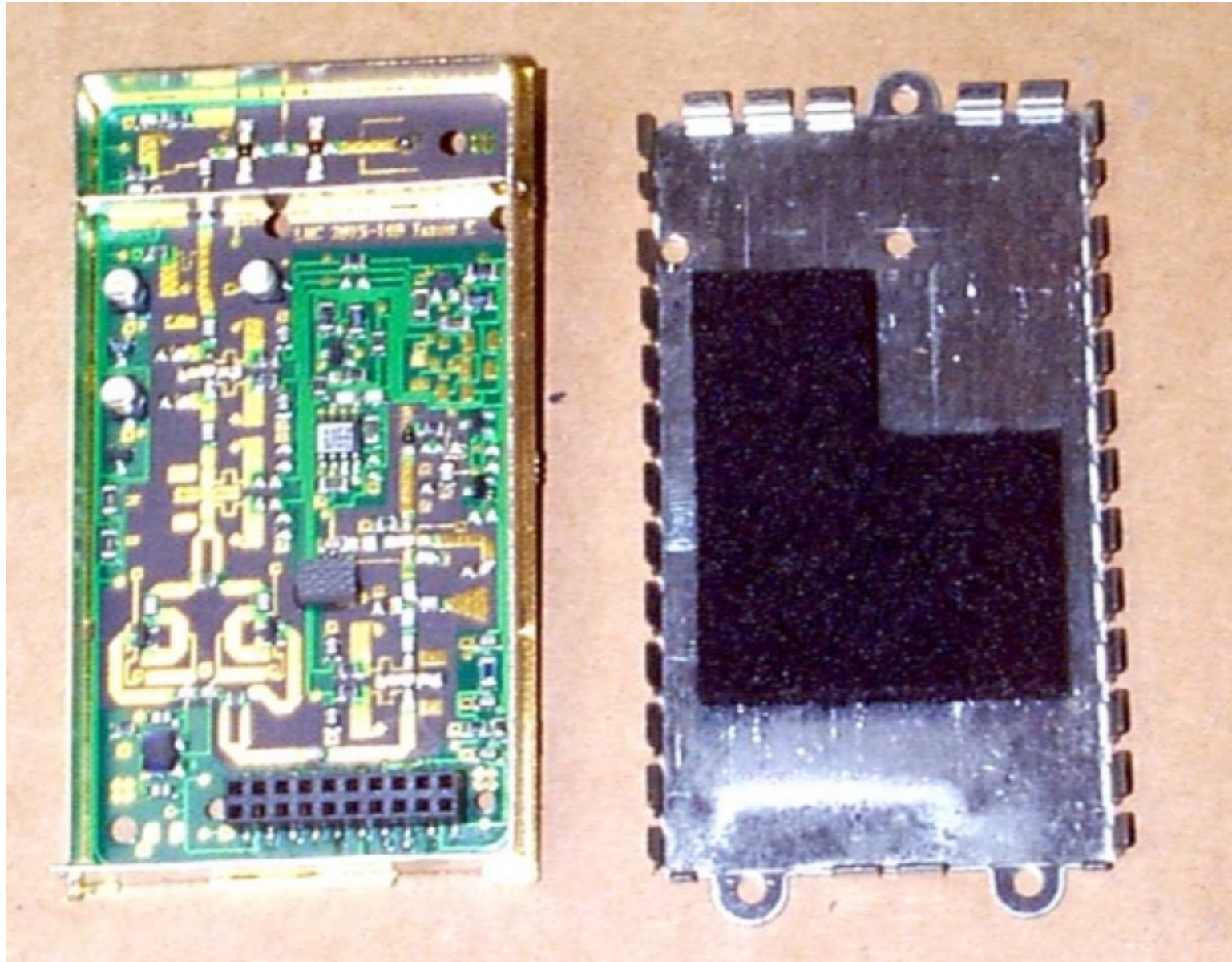




**2D and 4D (8-Pulse Width) Radome Scanner Unit**

IF PCB





**'Pathfinder' Scanner Unit**

**Low Noise Converter (LNC) and cover**