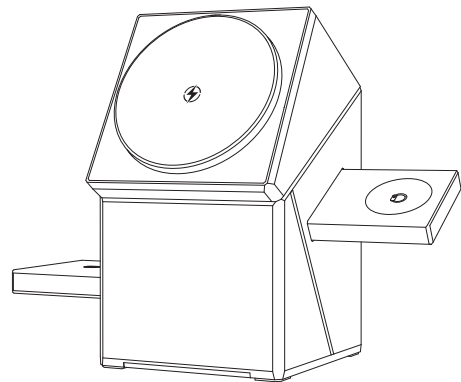


User Manual

Wireless Charger



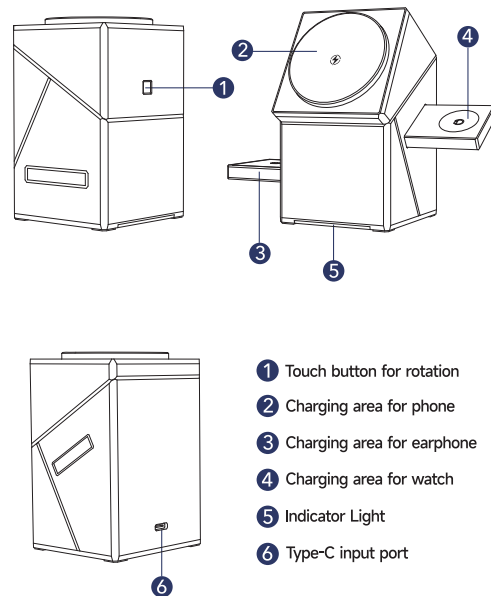
Product Introduction

This is a multifunctional desktop magnetic 3 in 1 auto rotation wireless charger, which can wirelessly charge mobile phones, headphones, and watches at the same time by power supply. Bid farewell wired shackles and start wireless experience.

Product Usage Guide

1. Please connect the product through the Type-C quick charging cable to the QC or PD above power adapter, to ensure that it supports fast wireless charging.
2. Built-in stepper motor and touch button to support wireless charger automatic rotation function, to compatible with different size of qi-enabled smartphones.
3. Press and popup the iWatch charging stand, place the Apple Watch to start wireless charging with 2.5W output.
4. Press and popup the earphone charging stand, place the earphone case to start wireless charging with 2.5W output.
5. Touch-sensitive design that allows for the automatic rotation of your smartphone with different viewing angle. (Please do not rotate it by hands to avoid of damage the product. Please reconnect the power supply and touch button to adjust it to the correct position .)

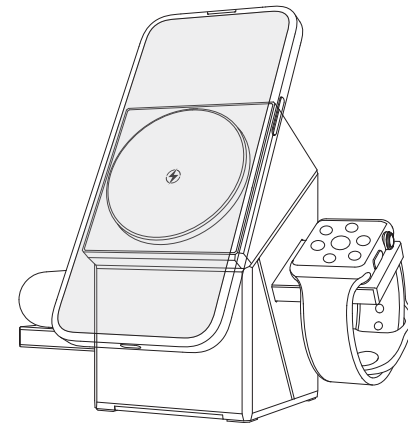
Product Parts Description



Specifications

Input: DC 5V/3A, 9V/3A
 Phone Output: 5W, 10W, 15W
 Product Standard: Qi
 Earphone Output: 2.5W
 Watch Output: 2.5W

Charging Distance: ≤10mm
 Charging Efficiency: ≤80%
 Product Dimension: 66*66*105mm
 Product Material: ABS+Tempered Glass
 Input interface: Type-C port



Indicators and Protection

1. Standby mode: the white LED light keeps on.
2. Charging mode: the ice blue LED light keeps on.
3. FOD function: when put metal or magnet objects on the charger, the ice blue LED light will flashes 6 times and stops charging.
4. Perfect protective function based on over-voltage, over-current, over-temperature and short-circuit protection.

Attention

1. Please do not vigorously extrude or collide.
2. Please do not dismantle or put it into fire or water when the product is power on, to avoid short circuit or leakage.
3. Please do not use it in severely high temperature, high humidity or corrosive environment, to avoid damage to the circuit leakage.
4. Please do not put the magnetic strip or chip card (Such as ID card, bankcard etc.) on the charging pad to avoid to cause magnetic card lose efficacy.
5. Please do not put the metal (Such as coin etc.) on the charging pad when charging, to avoid damage from heating.

Fast Wireless Charging requires PD30W or above adapter.

FCC Warning

This device complies with part 15 of the FCC Rules. Operation is subject to the following two conditions:

(1) This device may not cause harmful interference, and (2) this device must accept any interference received, including interference that may cause undesired operation.

Any Changes or modifications not expressly approved by the party responsible for compliance could void the user's authority to operate the equipment.

Note: This equipment has been tested and found to comply with the limits for a Class B digital device, pursuant to part 15 of the FCC Rules. These limits are designed to provide reasonable protection against harmful interference in a residential installation. This equipment generates uses and can radiate radiofrequency energy and, if not installed and used in accordance with the instructions, may cause harmful interference to radio communications. However, there is no guarantee that interference will not occur in a particular installation. If this equipment does cause harmful interference to radio or television reception, which can be determined by turning the equipment off and on, the user is encouraged to try to correct the interference by one or more of the following measures:

- Reorient or relocate the receiving antenna.
- Increase the separation between the equipment and receiver.
- Connect the equipment into an outlet on a circuit different from that to which the receiver is connected.
- Consult the dealer or an experienced radio/TV technician for help.

The FCC certification of this device refers to RF exposure testing performed in typical operating conditions, where a person is no closer than 20 centimeters from the device surface at all times, except for non-repetitive patterns with transient time intervals in the order of a second. Only in the stated conditions, the device is shown to fully comply with the FCC RF Exposure requirements of KDB 447498.