

## SAR EVALUATION REPORT

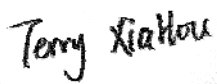
For

**Autel Robotics Co., Ltd.**

9th Floor, Bldg.B1, Zhiyuan, 1001 Xueyuan Rd., Xili, Nanshan, Shenzhen, China

**FCC ID: 2AGNTEF7RC2400A**

**IC: 20910-EF7RC2400A**

<b>Report Type:</b> Original Report	<b>Product Type:</b> EF7
<b>Report Number:</b> <u>RSZ180925005-SA</u>	
<b>Report Date:</b> <u>2018-11-19</u>	
Terry XiaHou 	
<b>Reviewed By:</b> <u>SAR Engineer</u>	
<b>Prepared By:</b> Bay Area Compliance Laboratories Corp. (Shenzhen) 6/F., West Wing, Third Phase of Wanli Industrial Building, Shihua Road, Futian Free Trade Zone, Shenzhen, Guangdong, China Tel: +86-755-33320018 Fax: +86-755-33320008 <a href="http://www.baclcorp.com.cn">www.baclcorp.com.cn</a>	

**Note:** This report must not be used by the customer to claim product certification, approval, or endorsement by A2LA\* or any agency of the Federal Government. \* This report may contain data that are not covered by the A2LA accreditation and are marked with an asterisk “\*”.

Attestation of Test Results			
EUT Information	EUT Description	EF7	
	Tested Model	EF7-1	
	FCC ID	2AGNTEF7RC2400A	
	IC	20910-EF7RC2400A	
	Serial Number	180925005	
	Test Date	2018/11/07 and 2018/11/08	
MODE		Max. SAR Level(s) Reported(W/kg)	Limit (W/kg)
SDR 2.4G	10g Extremity SAR	1.11	4.0
SDR 2.4G	1g Body SAR	0.73	1.6
Applicable Standards	FCC 47 CFR part 2.1093 Radiofrequency radiation exposure evaluation: portable devices		
	RSS-102 Issue 5 March 2015 Radio Frequency (RF) Exposure Compliance of Radio communication Apparatus (All Frequency Bands).		
	IEEE1528:2013 IEEE Recommended Practice for Determining the Peak Spatial-Average Specific Absorption Rate (SAR) in the Human Head from Wireless Communications Devices: Measurement Techniques		
	IEC 62209-2:2010 Human exposure to radio frequency fields from hand-held and body-mounted wireless communication devices-Human models, instrumentation, and procedures-Part 2: Procedure to determine the specific absorption rate (SAR) for wireless communication devices used in close proximity to the human body (frequency range of 30 MHz to 6 GHz)		
	KDB procedures KDB 447498 D01 General RF Exposure Guidance v06. KDB 865664 D01 SAR measurement 100 MHz to 6 GHz v01r04 KDB 865664 D02 RF Exposure Reporting v01r02 KDB 941225 D07 UMPC Mini Tablet v01r02		
<b>Note:</b> This wireless device has been shown to be capable of compliance for localized specific absorption rate (SAR) for General Population/Uncontrolled Exposure limits specified in <b>FCC 47 CFR part 2.1093</b> and has been tested in accordance with the measurement procedures specified in IEEE 1528-2013 and RF exposure KDB procedures. <b>The results and statements contained in this report pertain only to the device(s) evaluated.</b>			

## **TABLE OF CONTENTS**

<b>DOCUMENT REVISION HISTORY.....</b>	<b>4</b>
<b>EUT DESCRIPTION .....</b>	<b>5</b>
TECHNICAL SPECIFICATION.....	5
<b>REFERENCE, STANDARDS, AND GUIDELINES .....</b>	<b>6</b>
SAR LIMITS .....	7
<b>FACILITIES .....</b>	<b>8</b>
<b>DESCRIPTION OF TEST SYSTEM.....</b>	<b>9</b>
<b>EQUIPMENT LIST AND CALIBRATION.....</b>	<b>15</b>
EQUIPMENTS LIST & CALIBRATION INFORMATION .....	15
<b>SAR MEASUREMENT SYSTEM VERIFICATION .....</b>	<b>16</b>
LIQUID VERIFICATION.....	16
SYSTEM ACCURACY VERIFICATION .....	17
SAR SYSTEM VALIDATION DATA .....	18
<b>EUT TEST STRATEGY AND METHODOLOGY.....</b>	<b>20</b>
TEST POSITIONS FOR HAND-HELD DEVICE .....	20
TEST POSITIONS FOR BODY-WORN AND OTHER CONFIGURATIONS .....	20
TEST DISTANCE FOR SAR EVALUATION .....	21
SAR EVALUATION PROCEDURE .....	21
<b>CONDUCTED OUTPUT POWER MEASUREMENT .....</b>	<b>22</b>
PROVISION APPLICABLE.....	22
TEST PROCEDURE.....	22
MAXIMUM TARGET OUTPUT POWER.....	22
TEST RESULTS:.....	22
<b>STANDALONE SAR TEST EXCLUSION CONSIDERATIONS.....</b>	<b>23</b>
ANTENNAS LOCATION: .....	23
ANTENNA DISTANCE TO EDGE.....	23
ADDITION RESUME .....	24
<b>SAR MEASUREMENT RESULTS .....</b>	<b>25</b>
SAR TEST DATA .....	25
CORRECTED SAR EVALUATION .....	29
<b>SAR MEASUREMENT VARIABILITY.....</b>	<b>31</b>
<b>SAR SIMULTANEOUS TRANSMISSION DESCRIPTION.....</b>	<b>32</b>
<b>SAR PLOTS .....</b>	<b>33</b>
<b>APPENDIX A MEASUREMENT UNCERTAINTY .....</b>	<b>34</b>
<b>APPENDIX B EUT TEST POSITION PHOTOS.....</b>	<b>36</b>
<b>APPENDIX C PROBE CALIBRATION CERTIFICATES .....</b>	<b>37</b>
<b>APPENDIX D DIPOLE CALIBRATION CERTIFICATES .....</b>	<b>38</b>

## DOCUMENT REVISION HISTORY

---

Revision Number	Report Number	Description of Revision	Date of Revision
1.0	RSZ180925005-SA	Original Report	2018-11-19

## EUT DESCRIPTION

This report has been prepared on behalf of **Autel Robotics Co., Ltd.** and their product **EF7**, Model: **EF7-1**, **FCC ID: 2AGNTEF7RC2400A**, **IC: 20910-EF7RC2400A** or the EUT (Equipment under Test) as referred to in the rest of this report.

*\*All measurement and test data in this report was gathered from production sample serial number: 180925005 (Assigned by BACL, Shenzhen). The EUT supplied by the applicant was received on 2018-09-25.*

### Technical Specification

<b>Device Type:</b>	Portable
<b>Exposure Category:</b>	Population / Uncontrolled
<b>Antenna Type(s):</b>	External Antenna
<b>Accessories:</b>	None
<b>Operation Mode:</b>	SDR 2.4G
<b>Frequency Band:</b>	SDR 2.4G: 2403.5-2473.5 MHz
<b>Conducted RF Power:</b>	SDR 2.4G: 18.96 dBm
<b>Power Source:</b>	3.7 VDC Rechargeable Battery
<b>Normal Operation:</b>	Handheld and Close to Body (Body for short)

## REFERENCE, STANDARDS, AND GUIDELINES

---

### **FCC:**

The Report and Order requires routine SAR evaluation prior to equipment authorization of portable transmitter devices, including portable telephones. For consumer products, the applicable limit is 1.6 mW/g as recommended by the ANSI/IEEE standard C95.1-1992 [6] for an uncontrolled environment (Paragraph 65). According to the Supplement C of OET Bulletin 65 "Evaluating Compliance with FCC Guide-lines for Human Exposure to Radio frequency Electromagnetic Fields", released on Jun 29, 2001 by the FCC, the device should be evaluated at maximum output power (radiated from the antenna) under "worst-case" conditions for normal or intended use, incorporating normal antenna operating positions, device peak performance frequencies and positions for maximum RF energy coupling.

This report describes the methodology and results of experiments performed on wireless data terminal. The objective was to determine if there is RF radiation and if radiation is found, what is the extent of radiation with respect to safety limits. SAR (Specific Absorption Rate) is the measure of RF exposure determined by the amount of RF energy absorbed by human body (or its parts) – to determine how the RF energy couples to the body or head which is a primary health concern for body worn devices. The limit below which the exposure to RF is considered safe by regulatory bodies in North America is 1.6 mW/g average over 1 gram of tissue mass.

### **CE:**

The order requires routine SAR evaluation prior to equipment authorization of portable transmitter devices, including portable telephones. For consumer products, the applicable limit is 2 mW/g as recommended by EN62209-1 for an uncontrolled environment. According to the Standard, the device should be evaluated at maximum output power (radiated from the antenna) under "worst-case" conditions for normal or intended use, incorporating normal antenna operating positions, device peak performance frequencies and positions for maximum RF energy coupling.

This report describes the methodology and results of experiments performed on wireless data terminal. The objective was to determine if there is RF radiation and if radiation is found, what is the extent of radiation with respect to safety limits. SAR (Specific Absorption Rate) is the measure of RF exposure determined by the amount of RF energy absorbed by human body (or its parts) – to determine how the RF energy couples to the body or head which is a primary health concern for body worn devices. The limit below which the exposure to RF is considered safe by regulatory bodies in Europe is 2 mW/g average over 10 gram of tissue mass.

The test configurations were laid out on a specially designed test fixture to ensure the reproducibility of measurements. Each configuration was scanned for SAR. Analysis of each scan was carried out to characterize the above effects in the device.

**SAR Limits****FCC Limit**

EXPOSURE LIMITS	SAR (W/kg)	
	(General Population / Uncontrolled Exposure Environment)	(Occupational / Controlled Exposure Environment)
Spatial Average (averaged over the whole body)	0.08	0.4
Spatial Peak (averaged over any 1 g of tissue)	<b>1.60</b>	8.0
Spatial Peak (hands/wrists/feet/ankles averaged over 10 g)	4.0	20.0

**CE Limit**

EXPOSURE LIMITS	SAR (W/kg)	
	(General Population / Uncontrolled Exposure Environment)	(Occupational / Controlled Exposure Environment)
Spatial Average (averaged over the whole body)	0.08	0.4
Spatial Peak (averaged over any 10 g of tissue)	2.0	10
Spatial Peak (hands/wrists/feet/ankles averaged over 10 g)	4.0	20.0

Population/Uncontrolled Environments are defined as locations where there is the exposure of individual who have no knowledge or control of their exposure.

Occupational/Controlled Environments are defined as locations where there is exposure that may be incurred by people who are aware of the potential for exposure (i.e. as a result of employment or occupation).

General Population/Uncontrolled environments Spatial Peak limit 1.6W/kg (FCC) & 2 W/kg (CE) applied to the EUT.

## **FACILITIES**

---

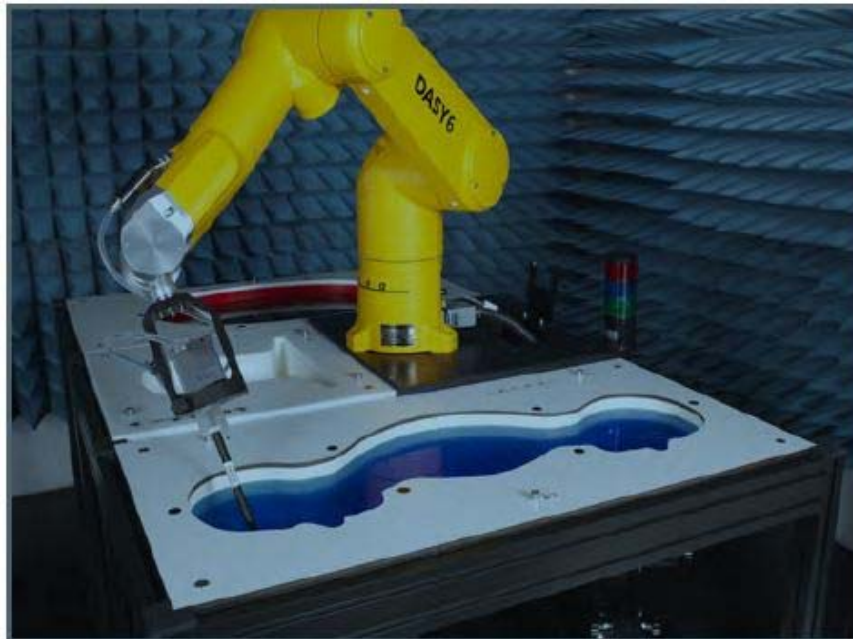
The test site used by Bay Area Compliance Laboratories Corp. (Shenzhen) to collect data is located at 6/F., West Wing, Third Phase of Wanli Industrial Building, Shihua Road, Futian Free Trade Zone, Shenzhen, Guangdong, China.

The test site has been approved by the FCC under the KDB 974614 D01 and is listed in the FCC Public Access Link (PAL) database, FCC Registration No.: 342867, the FCC Designation No.: CN1221.

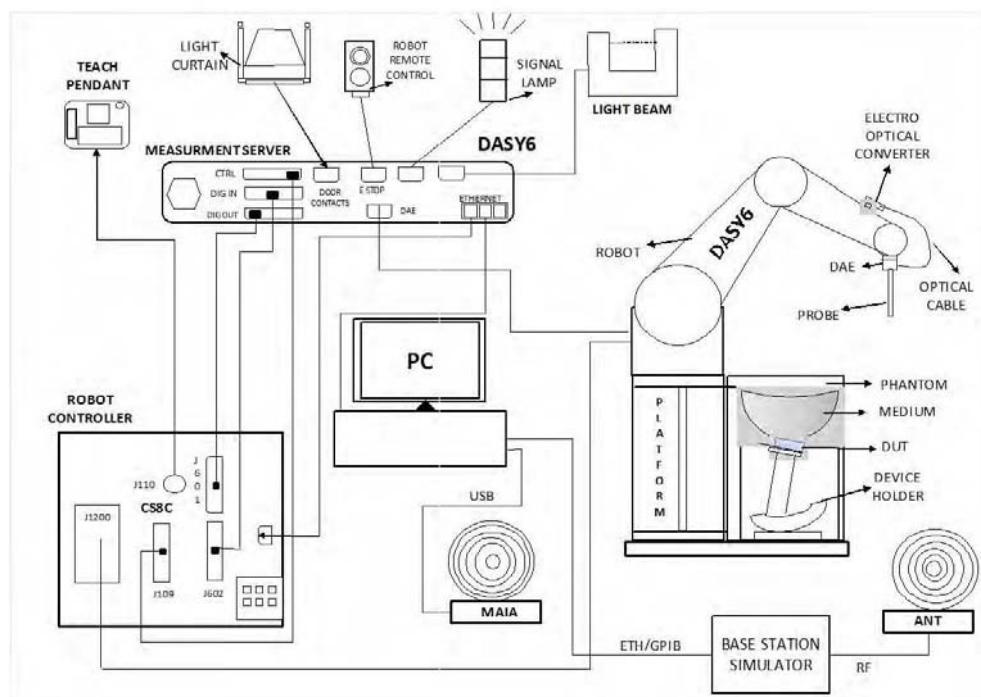
The test site has been registered with ISED Canada under ISED Canada Registration Number 3062B.



These measurements were performed with the automated near-field scanning system DASY6 from Schmid & Partner Engineering AG (SPEAG) which is the Fifth generation of the system shown in the figure hereinafter:



The DASY6 system for performing compliance tests consists of the following items:



- A standard high precision 6-axis robot (Staubli TX=RX family) with controller, teach pendant and software. An arm extension for accommodating the data acquisition electronics (DAE).
- An isotropic field probe optimized and calibrated for the targeted measurement.
- A data acquisition electronics (DAE) which performs the signal application, signal multiplexing, AD-conversion, offset measurements, mechanical surface detection, collision detection, etc. The unit is battery powered with standard or rechargeable batteries. The signal is optically transmitted to the EOC.
- The Electro-optical converter (EOC) performs the conversion from optical to electrical signals for the digital communication to the DAE. To use optical surface detection, a special version of the EOC is required. The EOC signal is transmitted to the measurement server.
- The function of the measurement server is to perform the time critical tasks such as signal filtering, control of the robot operation and fast movement interrupts.
- The Light Beam used is for probe alignment. This improves the (absolute) accuracy of the probe positioning.
- A computer running Win7 professional operating system and the DASY52 software.
- Remote control and teach pendant as well as additional circuitry for robot safety such as warning lamps, etc.
- The phantom, the device holder and other accessories according to the targeted measurement.

### DASY6 Measurement Server

The DASY6 measurement server is based on a PC/104 CPU board with a 400 MHz Intel ULV Celeron, 128 MB chip-disk and 128 MB RAM. The necessary circuits for communication with the DAE4 (or DAE3) electronics box, as well as the 16-bit AD converter system for optical detection and digital I/O interface are contained on the DASY6 I/O board, which is directly connected to the PC/104 bus of the CPU board.



The measurement server performs all real-time data evaluations of field measurements and surface detection, controls robot movements, and handles safety operations. The PC operating system cannot interfere with these time-critical processes. All connections are supervised by a watchdog, and disconnection of any of the cables to the measurement server will automatically disarm the robot and disable all program-controlled robot movements. Furthermore, the measurement server is equipped with an expansion port, which is reserved for future applications. Please note that this expansion port does not have a standardized pinout, and therefore only devices provided by SPEAG can be connected. Connection of devices from any other supplier could seriously damage the measurement server.

### Data Acquisition Electronics

The data acquisition electronics (DAE4) consist of a highly sensitive electrometer-grade preamplifier with auto-zeroing, a channel and gain-switching multiplexer, a fast 16 bit AD-converter and a command decoder with a control logic unit. Transmission to the measurement server is accomplished through an optical downlink for data and status information, as well as an optical uplink for commands and the clock.

The mechanical probe mounting device includes two different sensor systems for frontal and sideways probe contacts. They are used for mechanical surface detection and probe collision detection.

The input impedance of both the DAE4 as well as of the DAE3 box is 200M $\Omega$ ; the inputs are symmetrical and floating. Common mode rejection is above 80 dB.

**EX3DV4 E-Field Probes**

<b>Frequency</b>	10 MHz to > 6 GHz Linearity: $\pm 0.2$ dB (30 MHz to 6 GHz)
<b>Directivity</b>	$\pm 0.3$ dB in TSL (rotation around probe axis) $\pm 0.5$ dB in TSL (rotation normal to probe axis)
<b>Dynamic Range</b>	10 $\mu$ W/g to > 100 mW/g Linearity: $\pm 0.2$ dB (noise: typically < 1 $\mu$ W/g)
<b>Dimensions</b>	Overall length: 337 mm (Tip: 20 mm) Tip diameter: 2.5 mm (Body: 12 mm) Typical distance from probe tip to dipole centers: 1 mm
<b>Application</b>	High precision dosimetric measurements in any exposure scenario (e.g., very strong gradient fields); the only probe that enables compliance testing for frequencies up to 6 GHz with precision of better 30%.
<b>Compatibility</b>	DASY3, DASY4, DASY52 SAR and higher, EASY4/MRI

**SAM Twin Phantom**

The SAM Twin Phantom (shown in front of DASY6) is a fiberglass shell phantom with shell thickness 2 mm, except in the ear region where the thickness is increased to 6 mm. The phantom has three measurement areas: 1) Left Head, 2) Right Head, and 3) Flat Section. For larger devices, the use of the ELI-Phantom (shown behind DASY6) is required. For devices such as glasses with a wireless link, the Face Down Phantom is the most suitable (between the SAM Twin and ELI phantoms).

When the phantom is mounted inside allocated slot of the DASY6 platform, phantom reference points can be taught directly in the DASY5 V5.2 software. When the DASY6 platform is used to mount the

Phantom, some of the phantom teaching points cannot be reached by the robot in DASY5 V5.2. A special tool called P1a-P2aX-Former is provided to transform two of the three points, P1 and P2, to reachable locations. To use these new teaching points, a revised phantom configuration file is required.

In addition to our standard broadband liquids, the phantom can be used with the following tissue simulating liquids:

Sugar-water-based liquids can be left permanently in the phantom. Always cover the liquid when the system is not in use to prevent changes in liquid parameters due to water evaporation.

DGBE-based liquids should be used with care. As DGBE is a softener for most plastics, the liquid should be taken out of the phantom, and the phantom should be dried when the system is not in use (desirable at least once a week).

Do not use other organic solvents without previously testing the solvent resistivity of the phantom. Approximately 25 liters of liquid is required to fill the SAM Twin phantom.



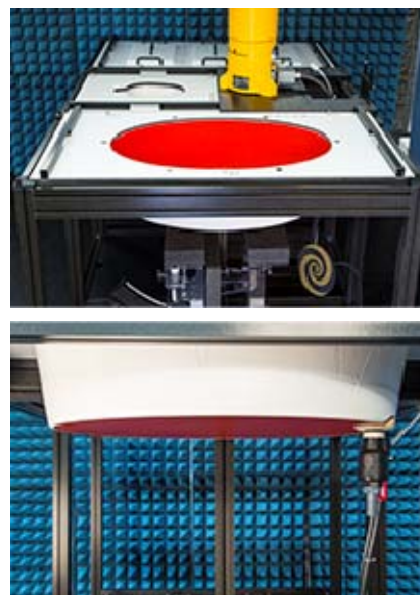
## ELI Phantom

The ELI phantom is intended for compliance testing of handheld and body-mounted wireless devices in the frequency range of 30MHz to 6 GHz. ELI is fully compatible with the latest draft of the standard IEC 62209-2 and the use of all known tissue simulating liquids. ELI has been optimized for performance and can be integrated into a SPEAG standard phantom table. A cover is provided to prevent evaporation of water and changes in liquid parameters. Reference markings on the phantom allow installation of the complete setup, including all predefined phantom positions and measurement grids, by teaching three points.

The phantom can be used with the following tissue simulating liquids:

- Sugar-water-based liquids can be left permanently in the phantom. Always cover the liquid when the system is not in use to prevent changes in liquid parameters due to water evaporation.
- DGBE-based liquids should be used with care. As DGBE is a softener for most plastics, the liquid should be taken out of the phantom, and the phantom should be dried when the system is not in use (desirable at least once a week).
- Do not use other organic solvents without previously testing the solvent resistivity of the phantom.

Approximately 25 liters of liquid is required to fill the ELI phantom.



## Robots

The DASY6 system uses the high-precision industrial robots TX60L, TX90XL, and RX160L from Staubli SA (France). The TX robot family - the successor of the well-known RX robot family - continues to offer the features important for DASY6 applications:

- High precision (repeatability 0.02mm)
- High reliability (industrial design)
- Low maintenance costs (virtually maintenance free due to direct drive gears; no belt drives)
- Jerk-free straight movements (brushless synchrony motors; no stepper motors)
- Low ELF interference (motor control fields shielded via the closed metallic construction shields)

The robots are controlled by the Staubli CS8c robot controllers. All information regarding the use and maintenance of the robot arm and the robot controller is provided

**Calibration Frequency Points for EX3DV4 E-Field Probes SN: 3820 Calibrated: 2018/06/26**

Calibration Frequency Point(MHz)	Frequency Range(MHz)		Conversion Factor		
	From	To	X	Y	Z
750 Head	650	810	9.72	9.72	9.72
750 Body	650	810	9.60	9.60	9.60
835 Head	810	860	9.40	9.40	9.40
835 Body	810	860	9.32	9.32	9.32
900 Head	860	1000	9.22	9.22	9.22
900 Body	860	1000	9.28	9.28	9.28
1450 Head	1350	1540	8.31	8.31	8.31
1450 Body	1350	1540	7.92	7.92	7.92
1640 Head	1540	1700	7.78	7.78	7.78
1640 Body	1540	1700	8.03	8.03	8.03
1750 Head	1700	1790	7.80	7.80	7.80
1750 Body	1700	1790	7.55	7.55	7.55
1810 Head	1790	1850	7.58	7.58	7.58
1810 Body	1790	1850	7.42	7.42	7.42
1900 Head	1850	1920	7.57	7.57	7.57
1900 Body	1850	1920	7.36	7.36	7.36
2000 Head	1920	2100	7.55	7.55	7.55
2000 Body	1920	2100	7.31	7.31	7.31
2450 Head	2350	2500	6.79	6.79	6.79
2450 Body	2350	2500	6.84	6.84	6.84
2600 Head	2500	2700	6.61	6.61	6.61
2600 Body	2500	2700	6.75	6.75	6.75
3500 Head	3400	3600	6.66	6.66	6.66
3500 Body	3400	3600	6.62	6.62	6.62
5200 Head	5090	5250	4.82	4.82	4.82
5200 Body	5090	5250	4.40	4.40	4.40
5300 Head	5250	5400	4.60	4.60	4.60
5300 Body	5250	5400	4.23	4.23	4.23
5500 Head	5400	5550	4.61	4.61	4.61
5500 Body	5400	5550	3.99	3.99	3.99
5600 Head	5550	5700	4.50	4.50	4.50
5600 Body	5550	5700	3.84	3.84	3.84
5800 Head	5700	5910	4.53	4.53	4.53
5800 Body	5700	5910	3.94	3.94	3.94

**Area Scans**

Area scans are defined prior to the measurement process being executed with a user defined variable spacing between each measurement point (integral) allowing low uncertainty measurements to be conducted. Scans defined for FCC applications utilize a 15mm 2 step integral, with 1.5mm interpolation used to locate the peak SAR area used for zoom scan assessments.

Where the system identifies multiple SAR peaks (which are within 25% of peak value) the system will provide the user with the option of assessing each peak location individually for zoom scan averaging.



### Zoom Scan (Cube Scan Averaging)

The averaging zoom scan volume utilized in the DASY5 software is in the shape of a cube and the side dimension of a 1 g or 10 g mass is dependent on the density of the liquid representing the simulated tissue. A density of  $1000 \text{ kg/m}^3$  is used to represent the head and body tissue density and not the phantom liquid density, in order to be consistent with the definition of the liquid dielectric properties, i.e. the side length of the 1g cube is 10mm, with the side length of the 10g cube is 21.5mm.

When the cube intersects with the surface of the phantom, it is oriented so that 3 vertices touch the surface of the shell or the center of a face is tangent to the surface. The face of the cube closest to the surface is modified in order to conform to the tangent surface.

The zoom scan integer steps can be user defined so as to reduce uncertainty, but normal practice for typical test applications (including FCC) utilize a physical step of  $7 \times 7 \times 7$  (5mmx5mmx5mm) providing a volume of 30 mm in the X & Y & Z axis.

### Tissue Dielectric Parameters for Head and Body Phantoms

The head tissue dielectric parameters recommended by the IEEE SCC-34/SC-2 in P1528 have been incorporated in the following table. These head parameters are derived from planar layer models simulating the highest expected SAR for the dielectric properties and tissue thickness variations in a human head. Other head and body tissue parameters that have not been specified in P1528 are derived from the tissue dielectric parameters computed from the 4-Cole-Cole equations described in Reference [12] and extrapolated according to the head parameters specified in P1528.

#### Recommended Tissue Dielectric Parameters for Head and Body

Frequency (MHz)	Head Tissue		Body Tissue	
	$\epsilon_r$	$\sigma$ (S/m)	$\epsilon_r$	$\sigma$ (S/m)
150	52.3	0.76	61.9	0.80
300	45.3	0.87	58.2	0.92
450	43.5	0.87	56.7	0.94
835	41.5	0.90	55.2	0.97
900	41.5	0.97	55.0	1.05
915	41.5	0.98	55.0	1.06
1450	40.5	1.20	54.0	1.30
1610	40.3	1.29	53.8	1.40
1800-2000	40.0	1.40	53.3	1.52
2450	39.2	1.80	52.7	1.95
3000	38.5	2.40	52.0	2.73
5800	35.3	5.27	48.2	6.00

## EQUIPMENT LIST AND CALIBRATION

### Equipments List & Calibration Information

Equipment	Model	S/N	Calibration Date	Calibration Due Date
DASY5 Test Software	DASY52 52.10.2	N/A	NCR	NCR
DASY6 Measurement Server	DASY6 6.0.31	N/A	NCR	NCR
Data Acquisition Electronics	DAE4	913	2018/5/11	2019/5/11
E-Field Probe	EX3DV4	3820	2018/6/26	2019/06/26
Mounting Device	MD4HHTV5	SD 000 H01 KA	NCR	NCR
SAM Twin Phantom	SAM-Twin V8.0	1962	NCR	NCR
ELI Phantom	ELI V8.0	2092	NCR	NCR
Dipole, 2450MHz	D2450V2	751	2017/10/12	2020/10/12
Simulated Tissue Liquid Head	HBBL600-10000V6	180622-2	Each Time	/
Simulated Tissue Liquid Body	MBBL600-6000V6	180611-1	Each Time	/
Network Analyzer	8753D	3410A08288	2018/4/25	2019/4/25
Dielectric Assessment Kit	DAK-3.5	1248	NCR	NCR
Anritsu Signal Generator	68369B	4114	2017/12/24	2018/12/24
Power Meter	E4419B	GB39511341	2018/6/23	2019/6/23
Power Amplifier	5S1G4	71377	NCR	NCR
Directional Coupler	4242-10	3307	NCR	NCR
Attenuator	3dB	5402	NCR	NCR
Attenuator	10dB	AU 3842	NCR	NCR
R&S, universal Radio Communication Tester	CMU200	115500	2018/6/23	2019/6/23
Wireless communication tester	8960	MY50266471	2018/4/25	2019/4/25

## SAR MEASUREMENT SYSTEM VERIFICATION

### Liquid Verification



Liquid Verification Setup Block Diagram

### Liquid Verification Results

Frequency (MHz)	Liquid Type	Liquid Parameter		Target Value		Delta (%)		Tolerance (%)
		$\epsilon_r$	$\sigma$ (S/m)	$\epsilon_r$	$\sigma$ (S/m)	$\Delta\epsilon_r$	$\Delta\sigma$	
2450	Simulated Tissue Liquid Body	53.268	1.967	52.70	1.95	1.08	0.87	$\pm 5$
2403.5	Simulated Tissue Liquid Body	53.637	1.931	52.76	1.91	1.66	1.1	$\pm 5$
2407.5	Simulated Tissue Liquid Body	53.525	1.943	52.76	1.91	1.45	1.73	$\pm 5$
2439.5	Simulated Tissue Liquid Body	53.446	1.956	52.71	1.94	1.4	0.82	$\pm 5$
2471.5	Simulated Tissue Liquid Body	52.866	1.993	52.67	1.98	0.37	0.66	$\pm 5$
2473.5	Simulated Tissue Liquid Body	52.73	2.014	52.67	1.98	0.11	1.72	$\pm 5$

\*Liquid Verification above was performed on 2018/11/07.

Frequency (MHz)	Liquid Type	Liquid Parameter		Target Value		Delta (%)		Tolerance (%)
		$\epsilon_r$	$\sigma$ (S/m)	$\epsilon_r$	$\sigma$ (S/m)	$\Delta\epsilon_r$	$\Delta\sigma$	
2450	Simulated Tissue Liquid Body	53.024	1.97	52.70	1.95	0.61	1.03	$\pm 5$
2403.5	Simulated Tissue Liquid Body	53.498	1.93	52.76	1.91	1.4	1.05	$\pm 5$
2407.5	Simulated Tissue Liquid Body	53.487	1.943	52.76	1.91	1.38	1.73	$\pm 5$
2439.5	Simulated Tissue Liquid Body	53.665	1.961	52.71	1.94	1.81	1.08	$\pm 5$
2471.5	Simulated Tissue Liquid Body	52.675	1.986	52.67	1.98	0.01	0.3	$\pm 5$
2473.5	Simulated Tissue Liquid Body	52.659	2.021	52.67	1.98	-0.02	2.07	$\pm 5$

\*Liquid Verification above was performed on 2018/11/08.



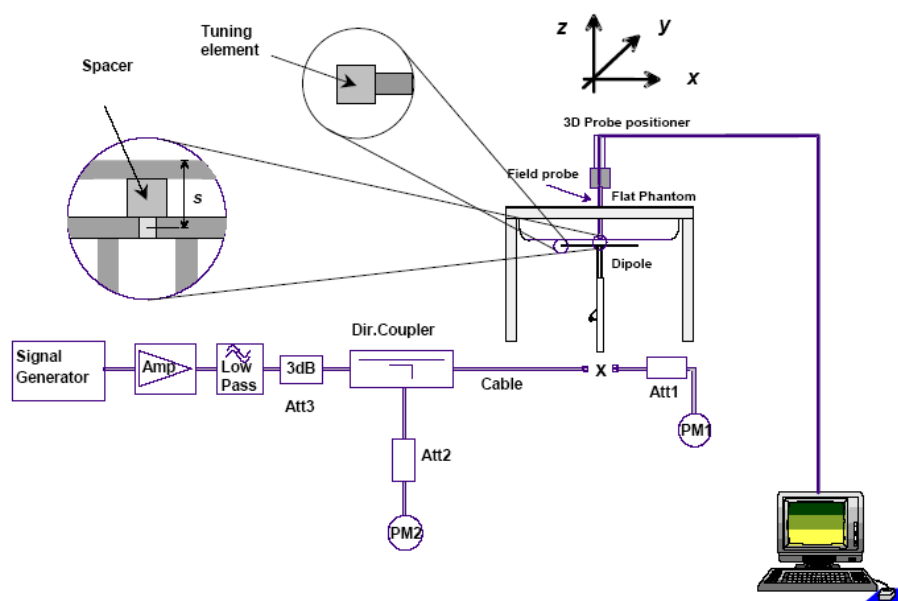
## System Accuracy Verification

Prior to the assessment, the system validation kit was used to test whether the system was operating within its specifications of  $\pm 10\%$ . The validation results are tabulated below. And also the corresponding SAR plot is attached as well in the SAR plots files.

The spacing distances in the **System Verification Setup Block Diagram** is given by the following:

- $s = 15 \text{ mm} \pm 0,2 \text{ mm}$  for  $300 \text{ MHz} \leq f \leq 1\,000 \text{ MHz}$ ;
- $s = 10 \text{ mm} \pm 0,2 \text{ mm}$  for  $1\,000 \text{ MHz} < f \leq 3\,000 \text{ MHz}$ ;
- $s = 10 \text{ mm} \pm 0,2 \text{ mm}$  for  $3\,000 \text{ MHz} < f \leq 6\,000 \text{ MHz}$ .

## System Verification Setup Block Diagram



## System Accuracy Check Results

Date	Frequency Band (MHz)	Liquid Type	Input Power (mW)	Measured SAR (W/kg)		Normalized to 1W (W/kg)	Target Value (W/Kg)	Delta (%)	Tolerance (%)
2018/11/07	2450	Body	100	1g	5.02	50.2	51.7	-2.901	±10
				10g	2.44	24.4	24.2	0.826	±10
2018/11/08	2450	Body	100	1g	5.43	54.3	51.7	5.029	±10
				10g	2.56	25.6	24.2	5.785	±10

\*The SAR values above are normalized to 1 Watt forward power.

## SAR SYSTEM VALIDATION DATA

### System Performance 2450 MHz Body

**DUT: Dipole 2450MHz; Type: D2450V2; Serial: 751**

Communication System: UID 0, CW (0); Frequency: 2450 MHz; Duty Cycle: 1:1

Medium parameters used:  $f = 2450$  MHz;  $\sigma = 1.967$  S/m;  $\epsilon_r = 53.268$ ;  $\rho = 1000$  kg/m<sup>3</sup>

Phantom section: Flat Section

DASY Configuration:

- Probe: EX3DV4 - SN3820; ConvF(6.84, 6.84, 6.84) @ 2450 MHz; Calibrated: 6/26/2018
- Sensor-Surface: 4mm (Mechanical Surface Detection)
- Electronics: DAE4 Sn913; Calibrated: 5/11/2018
- Phantom: ELI V8.0 P1aP2a; Type: QD OVA 004 AA; Serial: 2092
- DASY52 52.10.2(1495); SEMCAD X 14.6.12(7450)

**Body 2450MHz Pin=100mW/Area Scan (81x121x1):** Interpolated grid: dx=1.000 mm, dy=1.000 mm

Maximum value of SAR (interpolated) = 5.66 W/kg

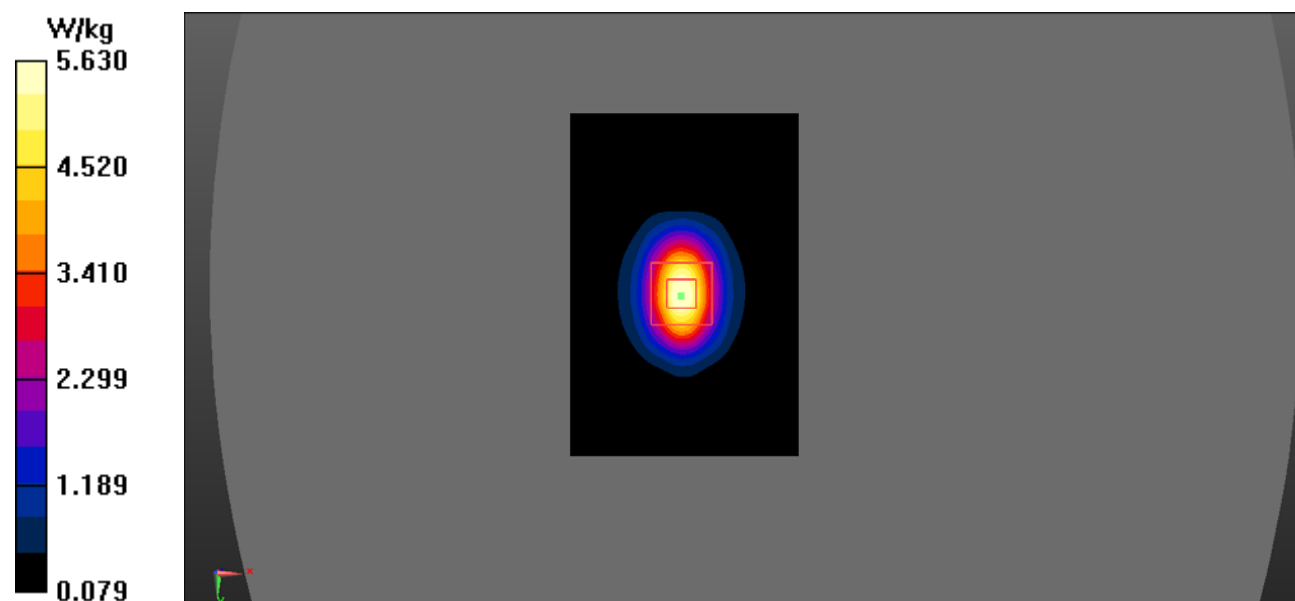
**Body 2450MHz Pin=100mW/Zoom Scan (7x7x7)/Cube 0:** Measurement grid: dx=5mm, dy=5mm, dz=5mm

Reference Value = 53.98 V/m; Power Drift = -0.14 dB

Peak SAR (extrapolated) = 10.7 W/kg

**SAR(1 g) = 5.02 W/kg; SAR(10 g) = 2.44 W/kg**

Maximum value of SAR (measured) = 5.63 W/kg



**System Performance 2450 MHz Body****DUT: Dipole 2450MHz; Type: D2450V2; Serial: 751**

Communication System: UID 0, CW (0); Frequency: 2450 MHz; Duty Cycle: 1:1

Medium parameters used:  $f = 2450$  MHz;  $\sigma = 1.97$  S/m;  $\epsilon_r = 53.024$ ;  $\rho = 1000$  kg/m<sup>3</sup>

Phantom section: Flat Section

DASY Configuration:

- Probe: EX3DV4 - SN3820; ConvF(6.84, 6.84, 6.84) @ 2450 MHz; Calibrated: 6/26/2018
- Sensor-Surface: 4mm (Mechanical Surface Detection)
- Electronics: DAE4 Sn913; Calibrated: 5/11/2018
- Phantom: ELI V8.0 P1aP2a; Type: QD OVA 004 AA; Serial: 2092
- DASY52 52.10.2(1495); SEMCAD X 14.6.12(7450)

**Body 2450MHz Pin=100mW/Area Scan (81x121x1):** Interpolated grid: dx=1.000 mm, dy=1.000 mm

Maximum value of SAR (interpolated) = 6.27 W/kg

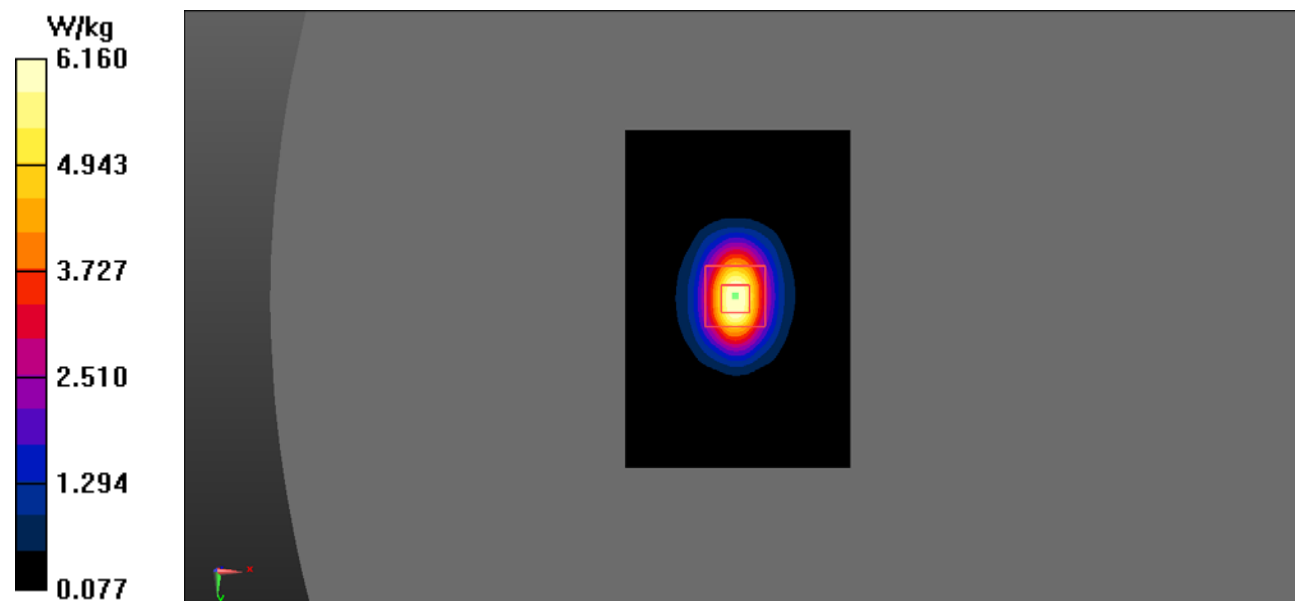
**Body 2450MHz Pin=100mW/Zoom Scan (7x7x7)/Cube 0:** Measurement grid: dx=5mm, dy=5mm, dz=5mm

Reference Value = 57.98 V/m; Power Drift = -0.20 dB

Peak SAR (extrapolated) = 11.1 W/kg

**SAR(1 g) = 5.43 W/kg; SAR(10 g) = 2.56 W/kg**

Maximum value of SAR (measured) = 6.16 W/kg



## EUT TEST STRATEGY AND METHODOLOGY

### Test positions for Hand-held device

Hand-held device means a portable device which is located in a user's hand during its intended use. Hand-held usage of the device, not at the head or torso. The device shall be placed directly against the flat phantom as shown in Figure J.1, for those sides of the device that are in contact with the hand during intended use.

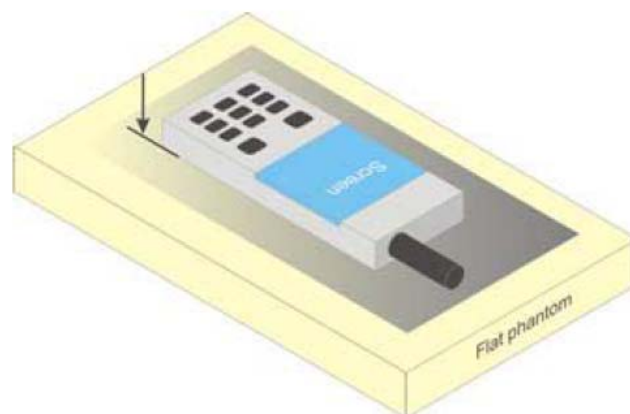


Figure J.1 – Test position for hand-held devices, not used at the head or torso

### Test positions for body-worn and other configurations

Body-worn operating configurations should be tested with the belt-clips and holsters attached to the device and positioned against a flat phantom in normal use configurations. Devices with a headset output should be tested with a headset connected to the device. When multiple accessories that do not contain metallic components are supplied with the device, the device may be tested with only the accessory that dictates the closest spacing to the body. When multiple accessories that contain metallic components are supplied with the device, the device must be tested with each accessory that contains a unique metallic component. If multiple accessories share an identical metallic component (e.g., the same metallic belt-clip used with different holsters with no other metallic components), only the accessory that dictates the closest spacing to the body must be tested.

Body-worn accessories may not always be supplied or available as options for some devices that are intended to be authorized for body-worn use. A separation distance of 1.5 cm between the back of the device and a flat phantom is recommended for testing body-worn SAR compliance under such circumstances. Other separation distances may be used, but they should not exceed 2.5 cm. In these cases, the device may use body-worn accessories that provide a separation distance greater than that tested for the device provided however that the accessory contains no metallic components.

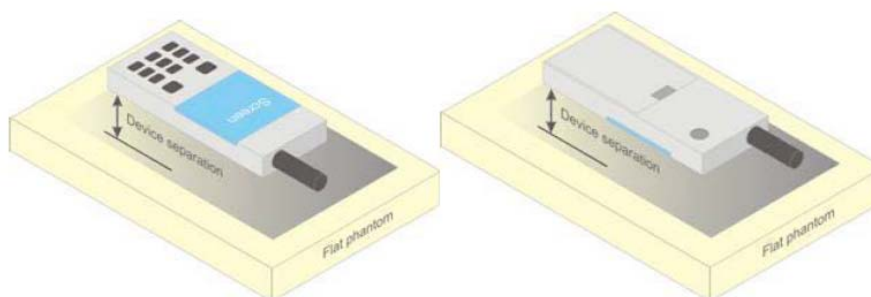


Figure 5 – Test positions for body-worn devices

## Test Distance for SAR Evaluation

For Handheld mode (10g Extremity SAR) the EUT is set directly against the phantom, the distance is 0mm; For Close to Body mode (1g Body SAR) the EUT is set 10mm away from the phantom, the test distance is 10mm.

## SAR Evaluation Procedure

The evaluation was performed with the following procedure:

Step 1: Measurement of the SAR value at a fixed location above the ear point or central position was used as a reference value for assessing the power drop. The SAR at this point is measured at the start of the test and then again at the end of the testing.

Step 2: The SAR distribution at the exposed side of the head was measured at a distance of 4 mm from the inner surface of the shell. The area covered the entire dimension of the head or radiating structures of the EUT, the horizontal grid spacing was 15 mm x 15 mm, and the SAR distribution was determined by integrated grid of 1.5mm x 1.5mm. Based on these data, the area of the maximum absorption was determined by spline interpolation. The first Area Scan covers the entire dimension of the EUT to ensure that the hotspot was correctly identified.

Step 3: Around this point, a volume of 30 mm x 30 mm x 30 mm was assessed by measuring 7x 7 x 7 points. On the basis of this data set, the spatial peak SAR value was evaluated under the following procedure:

- 1) The data at the surface were extrapolated, since the center of the dipoles is 1.2 mm away from the tip of the probe and the distance between the surface and the lowest measuring point is 1.3 mm. The extrapolation was based on a least square algorithm. A polynomial of the fourth order was calculated through the points in z-axes. This polynomial was then used to evaluate the points between the surface and the probe tip.

- 2) The maximum interpolated value was searched with a straightforward algorithm. Around this maximum the SAR values averaged over the spatial volumes (1 g or 10 g) were computed by the 3D-Spline interpolation algorithm. The 3D-Spline is composed of three one dimensional splines with the "Not a knot"-condition (in x, y and z-directions). The volume was integrated with the trapezoidal-algorithm. One thousand points (10 x 10 x 10) were interpolated to calculate the averages.

All neighboring volumes were evaluated until no neighboring volume with a higher average value was found.

Step 4: Re-measurement of the SAR value at the same location as in Step 1. If the value changed by more than 5%, the evaluation was repeated.

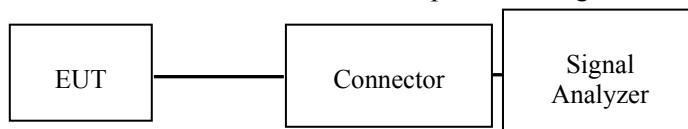
## CONDUCTED OUTPUT POWER MEASUREMENT

### Provision Applicable

The measured peak output power should be greater and within 5% than EMI measurement.

### Test Procedure

The RF output of the transmitter was connected to the input of the Signal Analyzer through Connector.



**SDR 2.4G**

### Maximum Target Output Power

Max Target Power(dBm)					
Mode/Band		Bandwidth	Channel		
			Low	Middle	High
SDR 2.4G	Chain0	1.4MHz	19.0	19.0	19.0
		3MHz	19.0	19.0	19.0
		10MHz	19.0	19.0	19.0
	Chain1	1.4MHz	19.0	19.0	19.0
		3MHz	19.0	19.0	19.0
		10MHz	19.0	19.0	19.0

### Test Results:

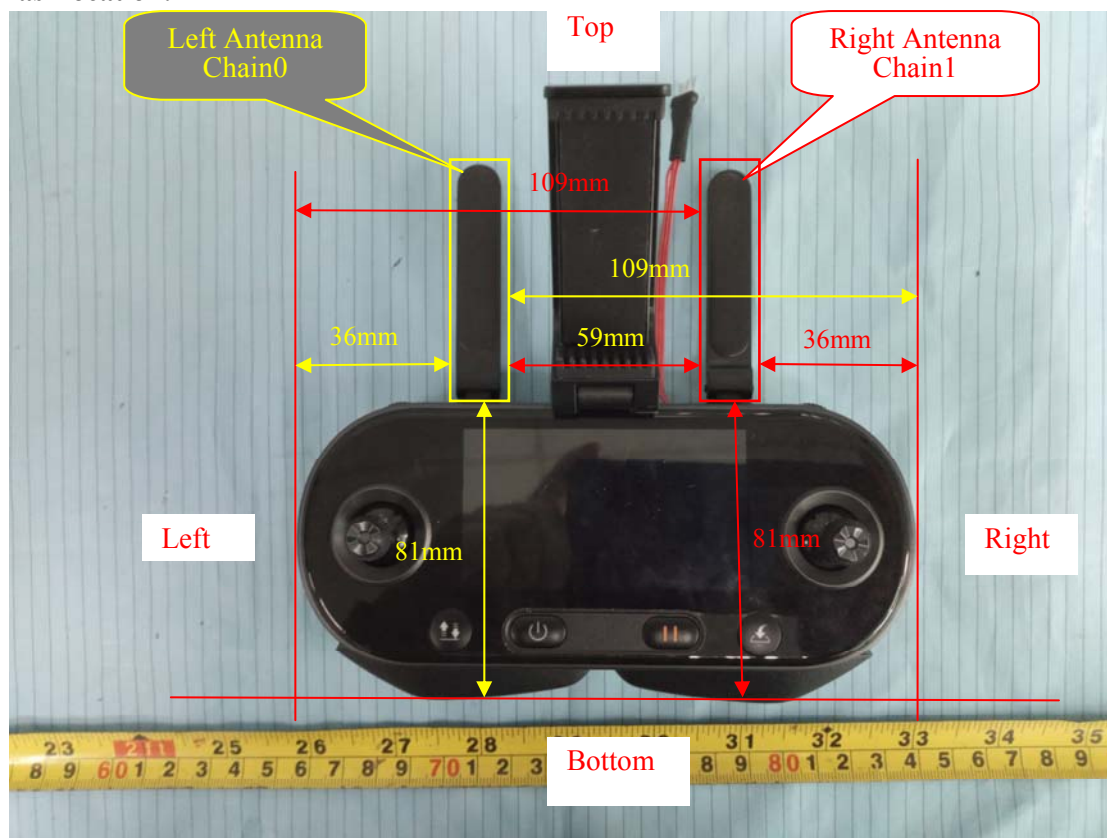
#### SDR 2.4G:

Frequency Band	Bandwidth	Channel	Frequency (MHz)	Max Conducted Peak Output Power	Max Conducted Peak Output Power
				Chain0 (dBm)	Chain1 (dBm)
SDR 2.4G	1.4MHz	Low	2403.5	18.04	18.15
		Middle	2439.5	17.81	18.57
		High	2473.5	18.40	18.31
	3MHz	Low	2407.5	18.28	18.42
		Middle	2439.5	18.05	<b>18.96</b>
		High	2471.5	18.81	18.74
	10MHz	Low	2407.5	18.41	18.73
		Middle	2439.5	18.25	18.85
		High	2471.5	18.86	18.73

**Note:** The duty cycle of SDR 2.4G is 80%.

## Standalone SAR test exclusion considerations

### Antennas Location:



### Antenna Distance To Edge

Antenna Distance To Edge(mm)						
Antenna	Left	Right	Front	Back	Top	Bottom
SDR 2.4G Chain0	36	109	21	8	0	81
SDR 2.4G Chain1	109	36	21	8	0	81

### Standalone SAR test exclusion for the EUT Edge considerations (KDB)

Test exclusion result						
Antenna	Left	Right	Front	Back	Top	Bottom
SDR 2.4G Chain0	Exclusion	Exclusion	Required	Required	Required	Exclusion
SDR 2.4G Chain1	Exclusion	Exclusion	Required	Required	Required	Exclusion

#### Note:

**Required:** Per KDB 941225 D07: The distance to Edge is less than 25mm, test is required.

**Exclusion:** Per KDB 941225 D07: The distance to Edge is more than 25mm, test is not required.



**Standalone SAR test exclusion for the EUT Edge considerations (RSS-102 issue 5)**

Antenna	Frequency (MHz)	Conducted $P_{avg}$ (dBm)	Gain (dBi)	EIRP $P_{avg}$ (dBm)	EIRP $P_{avg}$ (mW)	Test Exclusion Distance(mm)
SDR 2.4G Chain0	2473.5	19.0	2.0	21.0	126	36
SDR 2.4G Chain1	2473.5	19.0	2.0	21.0	126	36

**Note:**

1. When the operating frequency of the device is between two frequencies located in Table 1 of RSS-102 issue 5, linear interpolation shall be applied for the applicable separation distance.
2. When the Test Exclusion Distance is farther than 50mm and less than 200mm, testing for each edge is required.

Test exclusion result						
Antenna	Left	Right	Front	Back	Top	Bottom
SDR 2.4G Chain0	<b>Required</b>	Exclusion	<b>Required</b>	<b>Required</b>	<b>Required</b>	Exclusion
SDR 2.4G Chain1	Exclusion	<b>Required</b>	<b>Required</b>	<b>Required</b>	<b>Required</b>	Exclusion

**Note:**

**Required:** Per RSS-102 issue 5: The distance to Edge is less than **Test Exclusion Distance**, test is required.

**Exclusion:** Per RSS-102 issue 5: The distance to Edge is more than **Test Exclusion Distance**, test is not required.

**Addition Resume**

In order to simply test, the mobile holder device and controller hand shank are removed as below:





## SAR MEASUREMENT RESULTS

This page summarizes the results of the performed dosimetric evaluation.

### SAR Test Data

#### Environmental Conditions

Temperature:	21.5-22.7 °C	21.1-22.6 °C
Relative Humidity:	53 %	46 %
ATM Pressure:	101.7 kPa	102.1 kPa
Test Date:	2018/11/07	2018/11/08

Testing was performed by Huan Li, Sandy Zhang.

#### SDR 2.4G Mode:

Antenna	EUT Position	Bandwidth (MHz)	Frequency (MHz)	Max. Meas. Power (dBm)	Max. Rated Power (dBm)	10g SAR (W/Kg), Limited=4.0W/kg				
						Scaled Factor	Meas.	Scaled SAR	Correct SAR	Plot
<b>Chain0</b>	Handheld Left (0mm)	1.4	2403.5	/	/	/	/	/	/	/
			2439.5	17.81	19.0	1.315	0.018	0.02	0.02	1#
			2473.5	/	/	/	/	/	/	/
	Handheld Front (0mm)	1.4	2403.5	/	/	/	/	/	/	/
			2439.5	17.81	19.0	1.315	0.032	0.04	0.04	2#
			2473.5	/	/	/	/	/	/	/
	Handheld Back (0mm)	1.4	2403.5	/	/	/	/	/	/	/
			2439.5	17.81	19.0	1.315	0.046	0.06	0.06	3#
			2473.5	/	/	/	/	/	/	/
	Handheld Back Antenna Fold (0mm)	1.4	2403.5	/	/	/	/	/	/	/
			2439.5	17.81	19.0	1.315	<0.01	0.01	0.01	/
			2473.5	/	/	/	/	/	/	/
	Handheld Top (0mm)	1.4	2403.5	18.04	19.0	1.247	0.733	0.91	<b>0.91</b>	4#
			2439.5	17.81	19.0	1.315	0.478	0.63	0.63	5#
			2473.5	18.40	19.0	1.148	0.388	0.45	0.45	6#
		3	2407.5	18.28	19.0	1.180	0.460	0.54	0.54	7#
			2439.5	18.05	19.0	1.245	0.561	0.70	0.70	8#
			2471.5	18.81	19.0	1.045	0.457	0.48	0.48	9#
		10	2407.5	18.41	19.0	1.146	0.631	0.72	0.72	10#
			2439.5	18.25	19.0	1.189	0.633	0.75	0.75	11#
			2471.5	18.86	19.0	1.033	0.377	0.39	0.39	12#

Test on 2018/11/07

Antenna	EUT Position	Bandwidth (MHz)	Frequency (MHz)	Max. Meas. Power (dBm)	Max. Rated Power (dBm)	1g SAR (W/Kg), Limited=1.6W/kg				
						Scaled Factor	Meas.	Scaled SAR	Correct SAR	Plot
<b>Chain0</b>	Body Left (10mm)	1.4	2403.5	/	/	/	/	/	/	/
			2439.5	17.81	19.0	1.315	0.041	0.05	0.05	13#
			2473.5	/	/	/	/	/	/	/
	Body Front (10mm)	1.4	2403.5	/	/	/	/	/	/	/
			2439.5	17.81	19.0	1.315	0.038	0.05	0.05	14#
			2473.5	/	/	/	/	/	/	/
	Body Back (10mm)	1.4	2403.5	/	/	/	/	/	/	/
			2439.5	17.81	19.0	1.315	0.081	0.11	0.11	15#
			2473.5	/	/	/	/	/	/	/
	Body Back Antenna Fold (10mm)	1.4	2403.5	/	/	/	/	/	/	/
			2439.5	17.81	19.0	1.315	<0.01	0.01	0.01	/
			2473.5	/	/	/	/	/	/	/
	Body Top (10mm)	1.4	2403.5	18.04	19.0	1.247	0.325	0.41	0.41	16#
			2439.5	17.81	19.0	1.315	0.230	0.30	0.30	17#
			2473.5	18.40	19.0	1.148	0.209	0.24	0.24	18#
		3	2407.5	18.28	19.0	1.180	0.346	0.41	0.41	19#
			2439.5	18.05	19.0	1.245	0.320	0.40	0.40	20#
			2471.5	18.81	19.0	1.045	0.274	0.29	0.29	21#
		10	2407.5	18.41	19.0	1.146	0.413	0.47	<b>0.47</b>	22#
			2439.5	18.25	19.0	1.189	0.298	0.35	0.35	23#
			2471.5	18.86	19.0	1.033	0.247	0.26	0.26	24#

Test on 2018/11/07

Antenna	EUT Position	Bandwidth (MHz)	Frequency (MHz)	Max. Meas. Power (dBm)	Max. Rated Power (dBm)	10g SAR (W/Kg), Limited=4.0W/kg				
						Scaled Factor	Meas.	Scaled SAR	Correct SAR	Plot
<b>Chain1</b>	Handheld Right (0mm)	1.4	2403.5	/	/	/	/	/	/	/
			2439.5	18.57	19.0	1.104	0.031	0.03	0.03	25#
			2473.5	/	/	/	/	/	/	/
	Handheld Front (0mm)	1.4	2403.5	/	/	/	/	/	/	/
			2439.5	18.57	19.0	1.104	0.044	0.05	0.05	26#
			2473.5	/	/	/	/	/	/	/
	Handheld Back (0mm)	1.4	2403.5	/	/	/	/	/	/	/
			2439.5	18.57	19.0	1.104	0.049	0.05	0.05	27#
			2473.5	/	/	/	/	/	/	/
	Handheld Back Antenna Fold (0mm)	1.4	2403.5	/	/	/	/	/	/	/
			2439.5	18.57	19.0	1.104	<0.01	0.01	0.01	/
			2473.5	/	/	/	/	/	/	/
	Handheld Top (0mm)	1.4	2403.5	18.15	19.0	1.216	0.433	0.53	0.53	28#
			2439.5	18.57	19.0	1.104	0.311	0.34	0.34	29#
			2473.5	18.31	19.0	1.172	0.217	0.25	0.25	30#
		3	2407.5	18.42	19.0	1.143	0.413	0.47	0.47	31#
			2439.5	18.96	19.0	1.009	0.534	0.54	0.54	32#
			2471.5	18.74	19.0	1.062	0.283	0.30	0.30	33#
		10	2407.5	18.73	19.0	1.064	0.202	0.21	0.21	34#
			2439.5	18.85	19.0	1.035	0.335	0.35	0.35	35#
			2471.5	18.73	19.0	1.064	1.04	1.11	<b>1.11</b>	36#

Test on 2018/11/08

Antenna	EUT Position	Bandwidth (MHz)	Frequency (MHz)	Max. Meas. Power (dBm)	Max. Rated Power (dBm)	1g SAR (W/Kg), Limited=0.8W/kg				
						Scaled Factor	Meas.	Scaled SAR	Correct SAR	Plot
<b>Chain1</b>	Body Right (10mm)	1.4	2403.5	/	/	/	/	/	/	/
			2439.5	18.57	19.0	1.104	0.027	0.03	0.03	37#
			2473.5	/	/	/	/	/	/	/
	Body Front (10mm)	1.4	2403.5	/	/	/	/	/	/	/
			2439.5	18.57	19.0	1.104	0.054	0.06	0.06	38#
			2473.5	/	/	/	/	/	/	/
	Body Back (10mm)	1.4	2403.5	/	/	/	/	/	/	/
			2439.5	18.57	19.0	1.104	0.066	0.07	0.07	39#
			2473.5	/	/	/	/	/	/	/
	Body Back Antenna Fold (10mm)	1.4	2403.5	/	/	/	/	/	/	/
			2439.5	18.57	19.0	1.104	<0.01	0.01	0.01	/
			2473.5	/	/	/	/	/	/	/
	Body Top (10mm)	1.4	2403.5	18.15	19.0	1.216	0.598	0.73	<b>0.73</b>	40#
			2439.5	18.57	19.0	1.104	0.330	0.36	0.36	41#
			2473.5	18.31	19.0	1.172	0.265	0.31	0.31	42#
		3	2407.5	18.42	19.0	1.143	0.538	0.61	0.61	43#
			2439.5	18.96	19.0	1.009	0.719	0.73	<b>0.73</b>	44#
			2471.5	18.74	19.0	1.062	0.501	0.53	0.53	45#
		10	2407.5	18.73	19.0	1.064	0.226	0.24	0.24	46#
			2439.5	18.85	19.0	1.035	0.471	0.49	0.49	47#
			2471.5	18.73	19.0	1.064	0.579	0.62	0.62	48#

Test on 2018/11/08

**Note:**

1. When the SAR value is less than half of the limit, testing for other channels are optional.
2. When SAR or MPE is not measured at the maximum power level allowed for production to the individual channels tested to determine compliance.
3. For modes that peak SAR is too low to evaluate, a SAR value 0.01 W/kg is considered as their Scaled SAR.
4. According to Notice 2016-DRS001: Based on the IEEE 1528 and IEC 62209 requirements, the high, mid and low channels for the configuration with the highest SAR value must be tested regardless of the SAR value measured
5. According to Notice 2012-DRS0529, if the correction  $\Delta$ SAR has a negative sign, the measured SAR result should be corrected, and has a positive sign, the measured SAR result shall not be corrected.

**Corrected SAR Evaluation**

62209-2 © IEC:2010

– 89 –

**Annex F**  
(normative)**SAR correction for deviations of complex permittivity from targets****F.2 SAR correction formula**

From [13] and [14], a linear relationship was found between the percent change in SAR (denoted  $\Delta SAR$ ) and the percent change in the permittivity and conductivity from the target values in Table 1 (denoted  $\Delta \epsilon_r$  and  $\Delta \sigma$ , respectively). This linear relationship agrees with the results of Kuster and Balzano [48] and Bit-Babik et al. [2]. The relationship is given by:

$$\Delta SAR = c_\epsilon \Delta \epsilon_r + c_\sigma \Delta \sigma \quad (F.1)$$

where

$c_\epsilon = \partial(\Delta SAR)/\partial(\Delta \epsilon)$  is the coefficients representing the sensitivity of SAR to permittivity where SAR is normalized to output power;

$c_\sigma = \partial(\Delta SAR)/\partial(\Delta \sigma)$  is the coefficients representing the sensitivity of SAR to conductivity, where SAR is normalized to output power.

The values of  $c_\epsilon$  and  $c_\sigma$  have a simple relationship with frequency that can be described using polynomial equations. For the 1 g averaged SAR  $c_\epsilon$  and  $c_\sigma$  are given by

$$c_\epsilon = -7,854 \times 10^{-4} f^3 + 9,402 \times 10^{-3} f^2 - 2,742 \times 10^{-2} f - 0,202 \ 6 \quad (F.2)$$

$$c_\sigma = 9,804 \times 10^{-3} f^3 - 8,661 \times 10^{-2} f^2 + 2,981 \times 10^{-2} f + 0,782 \ 9 \quad (F.3)$$

where

$f$  is the frequency in GHz.

For the 10 g averaged SAR, the variables  $c_\epsilon$  and  $c_\sigma$  are given by:

$$c_\epsilon = 3,456 \times 10^{-3} f^3 - 3,531 \times 10^{-2} f^2 + 7,675 \times 10^{-2} f - 0,186 \ 0 \quad (F.4)$$

$$c_\sigma = 4,479 \times 10^{-3} f^3 - 1,586 \times 10^{-2} f^2 - 0,197 \ 2 f + 0,771 \ 7 \quad (F.5)$$

Calibrate Date	Type	Frequency (MHz)	$C_{\varepsilon}$	$\Delta\varepsilon_r$	$C_{\delta}$	$\Delta\delta$	$\Delta SAR$
2018/11/07	10g SAR	2450	-0.159	1.08	0.260	0.87	0.054
		2403.5	-0.158	1.66	0.269	1.1	0.034
		2407.5	-0.158	1.45	0.269	1.73	0.236
		2439.5	-0.159	1.4	0.262	0.82	-0.008
		2471.5	-0.160	0.37	0.256	0.66	0.11
		2473.5	-0.160	0.11	0.256	1.72	0.423
	1g SAR	2450	-0.225	1.08	0.480	0.87	0.175
		2403.5	-0.225	1.66	0.490	1.1	0.166
		2407.5	-0.225	1.45	0.489	1.73	0.52
		2439.5	-0.225	1.4	0.483	0.82	0.081
		2471.5	-0.225	0.37	0.476	0.66	0.231
		2473.5	-0.225	0.11	0.475	1.72	0.792

Calibrate Date	Type	Frequency (MHz)	$C_{\varepsilon}$	$\Delta\varepsilon_r$	$C_{\delta}$	$\Delta\delta$	$\Delta SAR$
2018/11/08	10g SAR	2450	-0.159	0.61	0.260	1.03	0.171
		2403.5	-0.158	1.4	0.269	1.05	0.061
		2407.5	-0.158	1.38	0.269	1.73	0.247
		2439.5	-0.159	1.81	0.262	1.08	-0.005
		2471.5	-0.160	0.01	0.256	0.3	0.075
		2473.5	-0.160	-0.02	0.256	2.07	0.533
	1g SAR	2450	-0.225	0.61	0.480	1.03	0.357
		2403.5	-0.225	1.4	0.490	1.05	0.2
		2407.5	-0.225	1.38	0.489	1.73	0.535
		2439.5	-0.225	1.81	0.483	1.08	0.114
		2471.5	-0.225	0.01	0.476	0.3	0.141
		2473.5	-0.225	-0.02	0.475	2.07	0.988

## SAR Measurement Variability

In accordance with published RF Exposure KDB procedure 865664 D01 SAR measurement 100 MHz to 6 GHz v01. These additional measurements are repeated after the completion of all measurements requiring the same head or body tissue-equivalent medium in a frequency band. The test device should be returned to ambient conditions (normal room temperature) with the battery fully charged before it is re-mounted on the device holder for the repeated measurement(s) to minimize any unexpected variations in the repeated results

- 1) Repeated measurement is not required when the original highest measured SAR is  $< 0.80$  W/kg; steps 2) through 4) do not apply.
- 2) When the original highest measured SAR is  $\geq 0.80$  W/kg, repeat that measurement once.
- 3) Perform a second repeated measurement only if the ratio of largest to smallest SAR for the original and first repeated measurements is  $> 1.20$  or when the original or repeated measurement is  $\geq 1.45$  W/kg ( $\sim 10\%$  from the 1-g SAR limit).
- 4) Perform a third repeated measurement only if the original, first or second repeated measurement is  $\geq 1.5$  W/kg and the ratio of largest to smallest SAR for the original, first and second repeated measurements is  $> 1.20$ .

*Note: The same procedures should be adapted for measurements according to extremity and occupational exposure limits by applying a factor of 2.5 for extremity exposure and a factor of 5 for occupational exposure to the corresponding SAR thresholds.*

### The Highest Measured SAR Configuration in Each Frequency Band

#### Head

SAR probe calibration point	Frequency Band	Freq.(MHz)	EUT Position	Meas. SAR (W/kg)		Largest to Smallest SAR Ratio
				Original	Repeated	
/	/	/	/	/	/	/

#### Body

SAR probe calibration point	Frequency Band	Freq.(MHz)	EUT Position	Meas. SAR (W/kg)		Largest to Smallest SAR Ratio
				Original	Repeated	
/	/	/	/	/	/	/

#### Note:

1. Second Repeated Measurement is not required since the ratio of the largest to smallest SAR for the original and first repeated measurement is not  $> 1.20$ .
2. The measured SAR results **do not** have to be scaled to the maximum tune-up tolerance to determine if repeated measurements are required.
3. SAR measurement variability must be assessed for each frequency band, which is determined by the **SAR probe calibration point and tissue-equivalent medium** used for the device measurements..

## SAR SIMULTANEOUS TRANSMISSION DESCRIPTION

### Simultaneous Transmission:

Description of Simultaneous Transmit Capabilities		
Transmitter Combination	Simultaneous?	Hotspot?
Chain0 + Chain1	×	×

### Note:

1. Chain0 and Chain1 cannot transmit simultaneously but can receive simultaneously.



## SAR Plots

---

**Please Refer to the Attachment.**

## APPENDIX A MEASUREMENT UNCERTAINTY

The uncertainty budget has been determined for the measurement system and is given in the following Table.

### Measurement uncertainty evaluation for IEEE1528-2013 SAR test

Source of uncertainty	Tolerance/ uncertainty ± %	Probability distribution	Divisor	ci (1 g)	ci (10 g)	Standard uncertainty ± %, (1 g)	Standard uncertainty ± %, (10 g)
<b>Measurement system</b>							
Probe calibration	6.55	N	1	1	1	6.6	6.6
Axial Isotropy	4.7	R	$\sqrt{3}$	1	1	2.7	2.7
Hemispherical Isotropy	9.6	R	$\sqrt{3}$	0	0	0.0	0.0
Boundary effect	1.0	R	$\sqrt{3}$	1	1	0.6	0.6
Linearity	4.7	R	$\sqrt{3}$	1	1	2.7	2.7
Detection limits	1.0	R	$\sqrt{3}$	1	1	0.6	0.6
Readout electronics	0.3	N	1	1	1	0.3	0.3
Response time	0.0	R	$\sqrt{3}$	1	1	0.0	0.0
Integration time	0.0	R	$\sqrt{3}$	1	1	0.0	0.0
RF ambient conditions – noise	1.0	R	$\sqrt{3}$	1	1	0.6	0.6
RF ambient conditions–reflections	1.0	R	$\sqrt{3}$	1	1	0.6	0.6
Probe positioner mech. Restrictions	0.8	R	$\sqrt{3}$	1	1	0.5	0.5
Probe positioning with respect to phantom shell	6.7	R	$\sqrt{3}$	1	1	3.9	3.9
Post-processing	2.0	R	$\sqrt{3}$	1	1	1.2	1.2
<b>Test sample related</b>							
Test sample positioning	2.8	N	1	1	1	2.8	2.8
Device holder uncertainty	6.3	N	1	1	1	6.3	6.3
Drift of output power	5.0	R	$\sqrt{3}$	1	1	2.9	2.9
<b>Phantom and set-up</b>							
Phantom uncertainty (shape and thickness tolerances)	4.0	R	$\sqrt{3}$	1	1	2.3	2.3
Liquid conductivity target)	5.0	R	$\sqrt{3}$	0.64	0.43	1.8	1.2
Liquid conductivity meas.)	2.5	N	1	0.64	0.43	1.6	1.1
Liquid permittivity target)	5.0	R	$\sqrt{3}$	0.6	0.49	1.7	1.4
Liquid permittivity meas.)	2.5	N	1	0.6	0.49	1.5	1.2
Combined standard uncertainty		RSS				12.2	12.0
Expanded uncertainty 95 % confidence interval)						24.3	23.9

## Measurement uncertainty evaluation for IEC62209-2 SAR test

Source of uncertainty	Tolerance/ uncertainty ± %	Probability distribution	Divisor	ci (1 g)	ci (10 g)	Standard uncertainty ± %, (1 g)	Standard uncertainty ± %, (10 g)
<b>Measurement system</b>							
Probe calibration	6.55	N	1	1	1	6.6	6.6
Axial Isotropy	4.7	R	$\sqrt{3}$	1	1	2.7	2.7
Hemispherical Isotropy	9.6	R	$\sqrt{3}$	0	0	0.0	0.0
Linearity	4.7	R	$\sqrt{3}$	1	1	2.7	2.7
Modulation Response	0.0	R	$\sqrt{3}$	1	1	0.0	0.0
Detection limits	1.0	R	$\sqrt{3}$	1	1	0.6	0.6
Boundary effect	1.0	R	$\sqrt{3}$	1	1	0.6	0.6
Readout electronics	0.3	N	1	1	1	0.3	0.3
Response time	0.0	R	$\sqrt{3}$	1	1	0.0	0.0
Integration time	0.0	R	$\sqrt{3}$	1	1	0.0	0.0
RF ambient conditions – noise	1.0	R	$\sqrt{3}$	1	1	0.6	0.6
RF ambient conditions–reflections	1.0	R	$\sqrt{3}$	1	1	0.6	0.6
Probe positioner mech. Restrictions	0.8	R	$\sqrt{3}$	1	1	0.5	0.5
Probe positioning with respect to phantom shell	6.7	R	$\sqrt{3}$	1	1	3.9	3.9
Post-processing	2.0	R	$\sqrt{3}$	1	1	1.2	1.2
<b>Test sample related</b>							
Device holder Uncertainty	6.3	N	1	1	1	6.3	6.3
Test sample positioning	2.8	N	1	1	1	2.8	2.8
Power scaling	4.5	R	$\sqrt{3}$	1	1	2.6	2.6
Drift of output power	5.0	R	$\sqrt{3}$	1	1	2.9	2.9
<b>Phantom and set-up</b>							
Phantom uncertainty (shape and thickness tolerances)	4.0	R	$\sqrt{3}$	1	1	2.3	2.3
Algorithm for correcting SAR for deviations in permittivity and conductivity	1.9	N	1	1	0.84	1.1	0.9
Liquid conductivity (meas.)	2.5	N	1	0.64	0.43	1.6	1.1
Liquid permittivity (meas.)	2.5	N	1	0.6	0.49	1.5	1.2
Temp. unc. - Conductivity	1.7	R	$\sqrt{3}$	0.78	0.71	0.8	0.7
Temp. unc. - Permittivity	0.3	R	$\sqrt{3}$	0.23	0.26	0.0	0.0
Combined standard uncertainty		RSS				12.2	12.1
Expanded uncertainty 95 % confidence interval)						24.5	24.2

## APPENDIX B EUT TEST POSITION PHOTOS

---

**Please Refer to the Attachment.**

## APPENDIX C PROBE CALIBRATION CERTIFICATES

---

**Please Refer to the Attachment.**

## APPENDIX D DIPOLE CALIBRATION CERTIFICATES

---

**Please Refer to the Attachment.**

**\*\*\*\*\* END OF REPORT \*\*\*\*\***