

Lumi United Technology Co., Ltd
B1, Chongwen Park, Nanshan iPark, Liuxian Avenue, Taoyuan Residential District, Nanshan District, Shenzhen
518000, China

Date: 2024-11-29

FEDERAL COMMUNICATIONS COMMISSION
AUTHORIZATION AND EVALUATION DIVISION
7435 OAKLAND MILLS ROAD
COLUMBIA, MD 21046

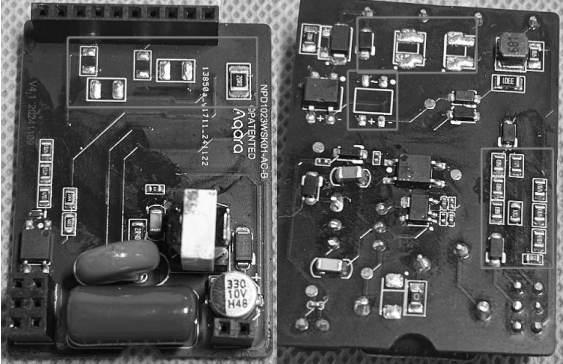
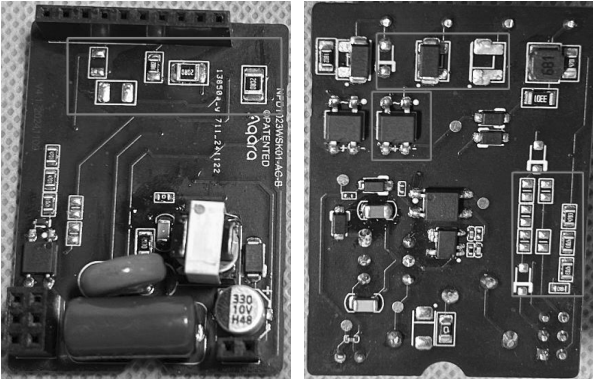
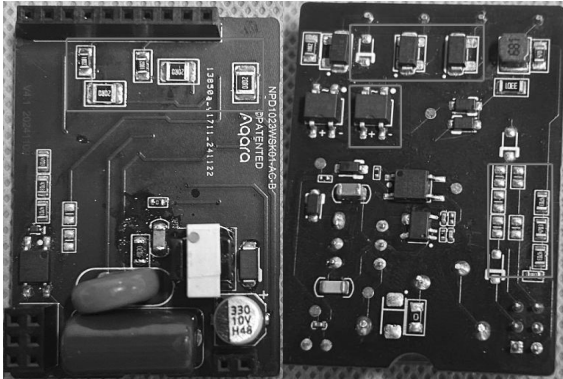
Product Name: Light Switch H2 US (4 Buttons, 3 Channels), Light Switch H2 US (2 Buttons, 2 Channels), Light Switch H2 US (2 Buttons, 1 Channel)
FCC ID: 2AKIT-WSK02E
Model No.: WS-K04E, WS-K02E, WS-K03E

Model Declaration Letter

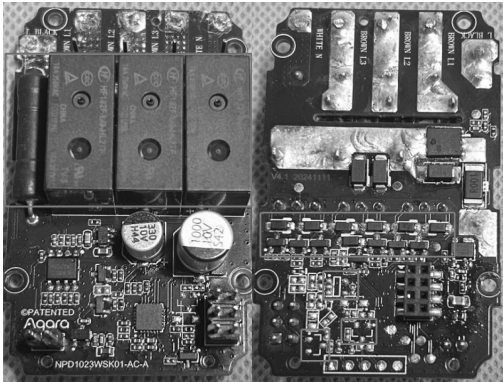
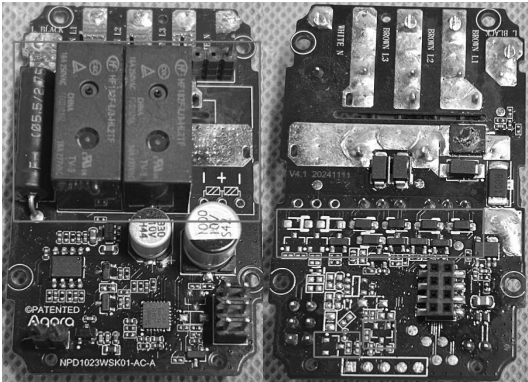
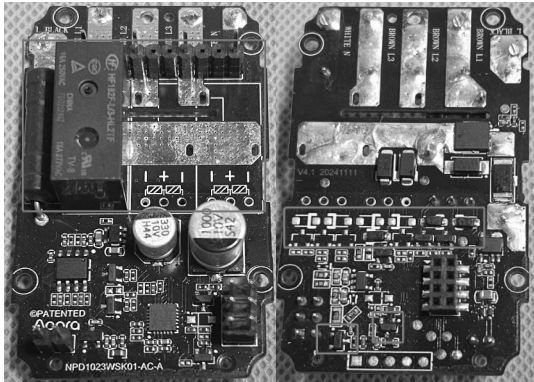
Dear Regulatory Authority,

The equipment (Model: WS-K02E, WS-K03E) is electronically/electrically identical to the EUT (Model: WS-K04E) and that the results of the Spurious Emissions test continue to be representative of and applicable to it.

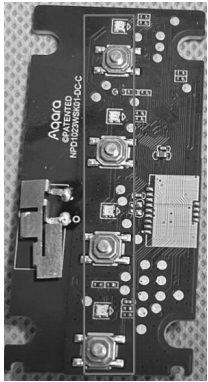
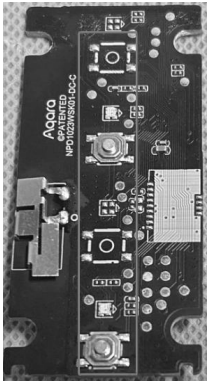
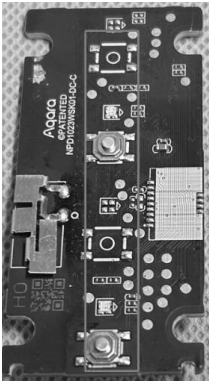
The differences list as below




Location	Model: WS-K02E	Model: WS-K03E	Model: WS-K04E
AC-B board			

AC-A board



DC-C board



Externa IPhotos			
	<div><div>1. The WS-K02E and WS-K03E have 2 Buttons, and the WS-K04E has 4 Buttons.</div><div>2. Some circuits of AC-B board and AC-A board are different. WS-K02E is 1 Channel 2 Buttons, WS-K03E is 2 Channel 2 Buttons, and WS-KO4E 4 Channel 3 Buttons.</div><div>3. The DC-C board buttons are different, but the circuit is the same.</div></div>		

Sincerely,

Signatory
[Heidi He, Manager]

Heidi. he.