

Shenzhen Monster Creative Technology Co., Ltd

Add: Room 1602, Building A, Fencheng Zhigu Building, Xixiang Street, Bao 'an District,
Shenzhen, Guangdong, China

Date: 2025-4-9

FCC ID: 2AVD2-MH22241

Dear Sir/Madam,

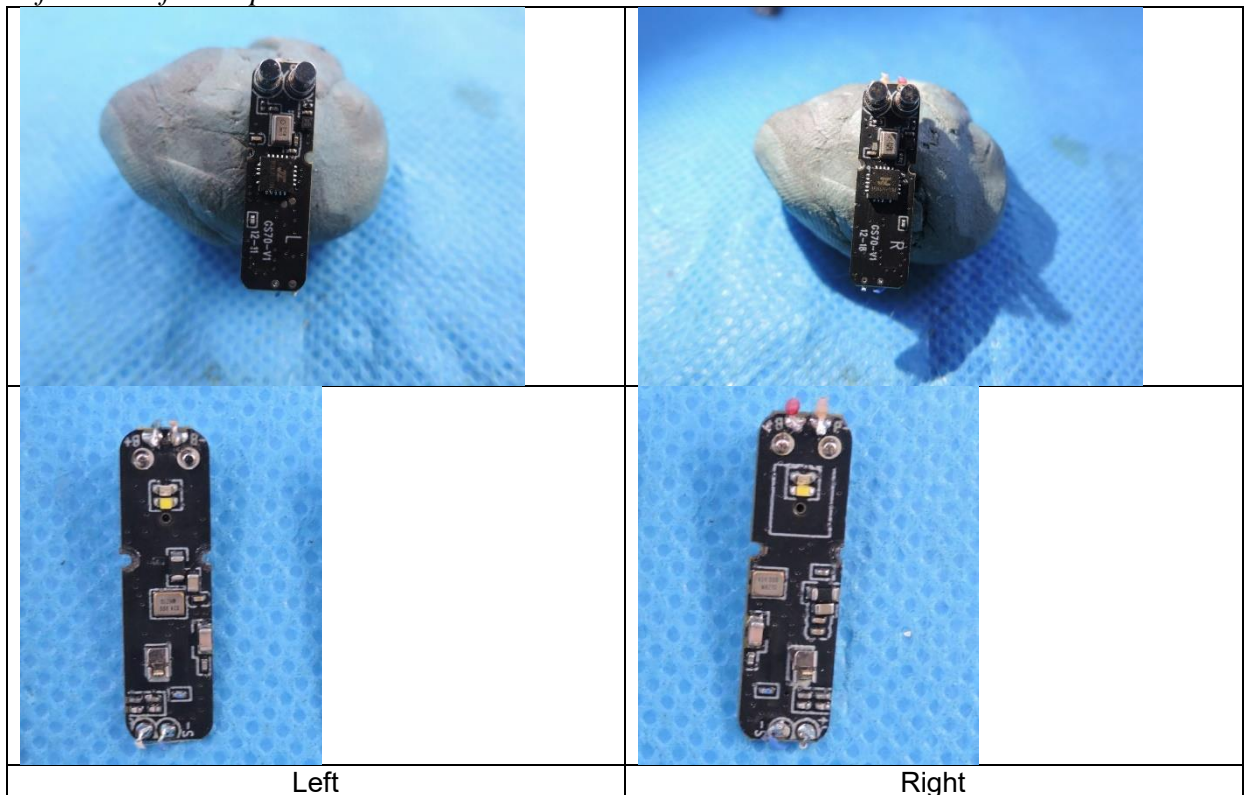
We, **Shenzhen Monster Creative Technology Co., Ltd** Hereby declares the following statement for Federal Communications Commission, PCB board, circuit, structure and internal of these models are same, Only model number is different for these models:

Product name: BLUETOOTH HEADPHONE

Model no.: MH22241, E99

Additionally, for each model above, the left&right earphones are the same schematic circuits, but the locations of components are different.

Refer to the follow photos:



Shenzhen Monster Creative Technology Co., Ltd

*Add: Room 1602, Building A, Fencheng Zhigu Building, Xixiang Street, Bao 'an District,
Shenzhen, Guangdong, China*

Sincerely,

Wang run long

Name/Title : Wang run long/R & D Manager
Company: Shenzhen Monster Creative Technology Co., Ltd
Address: Room 1602, Building A, Fencheng Zhigu Building, Xixiang Street, Bao
'an District, Shenzhen, Guangdong, China
Phone: 86-0755-27364448
Fax: 86-0755-27364448
E-Mail: msbuyer_lbh@monster-china.com