

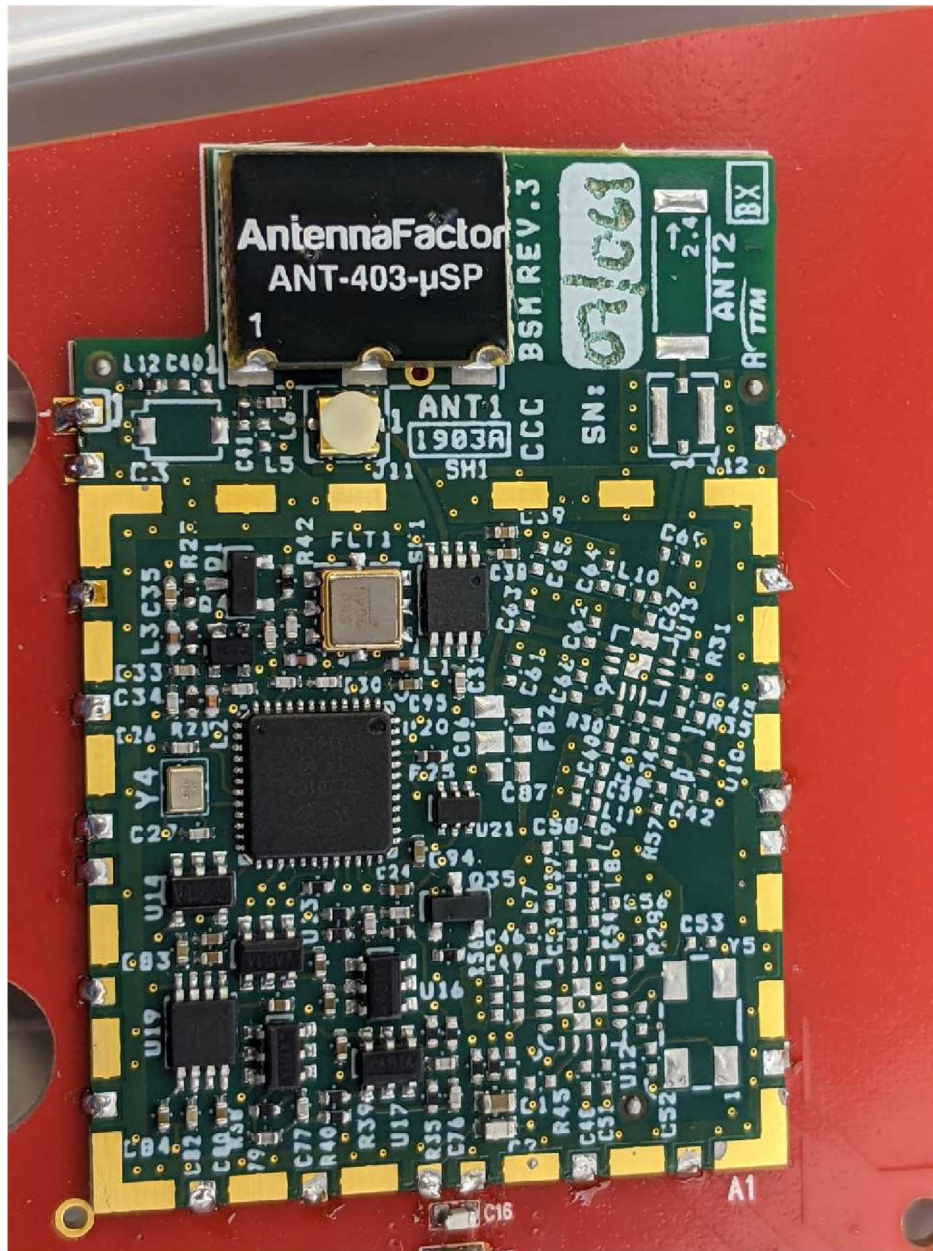


Internal Picture 1: Bottom PCB layout of the Intelio Programming Wand. 13.56MHz antenna is a PCB trace 2-turn coil.

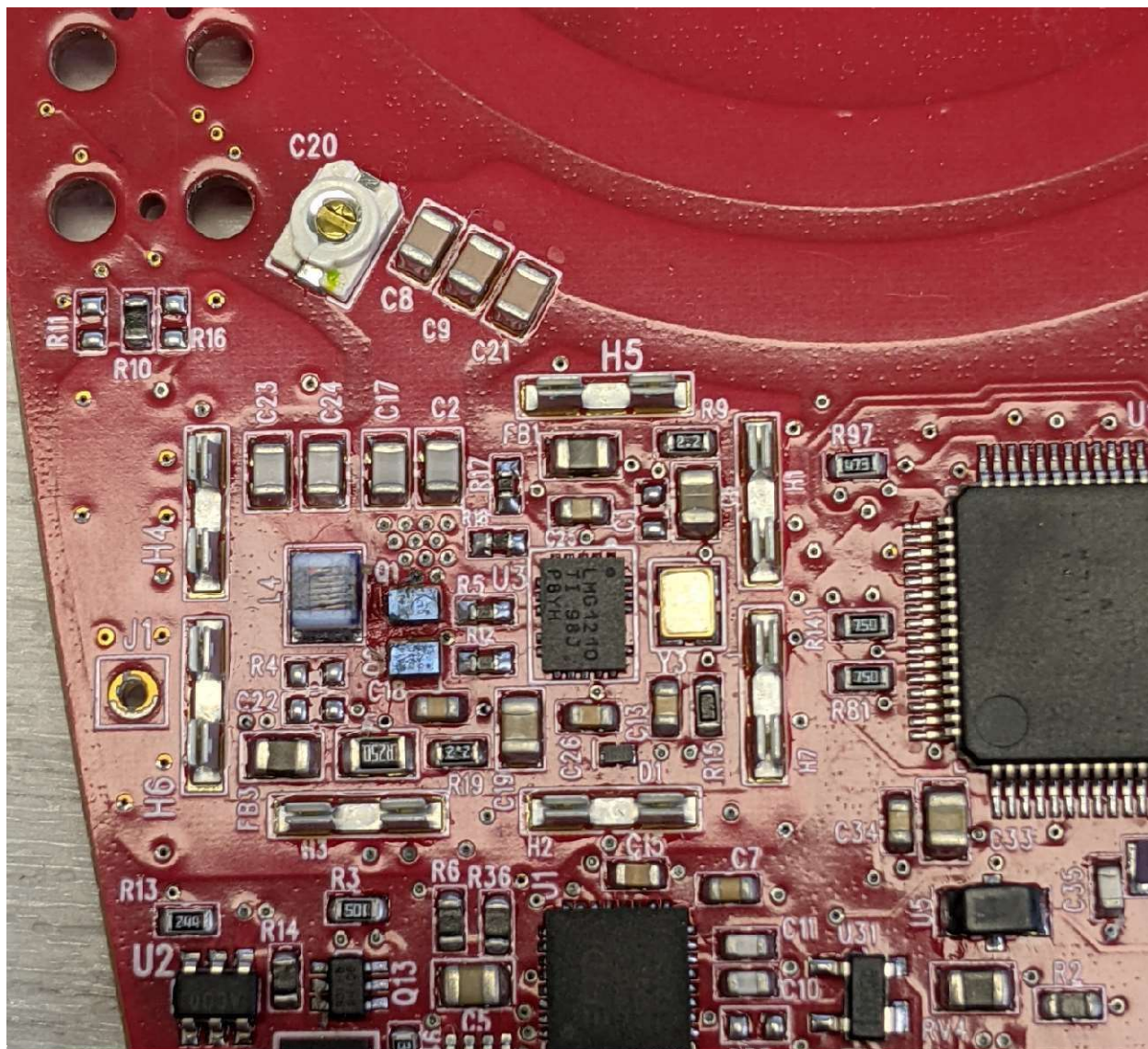


Internal Picture 2: Top PCB layout of the Intelio Programming Wand, with attached BSM07 RF Communication module for MICS operation.





Internal Picture 3: Feedthrough lines connecting epoxy header with antenna and standard lead connections to Smart Mini PCB and cannister. MICs antenna is Linx Technologies ANT-403-uSP.



Internal Picture 4: Shielded circuitry on PCB bottom.





Internal Picture 5: Bottom PCB with shield over amplifier circuitry.