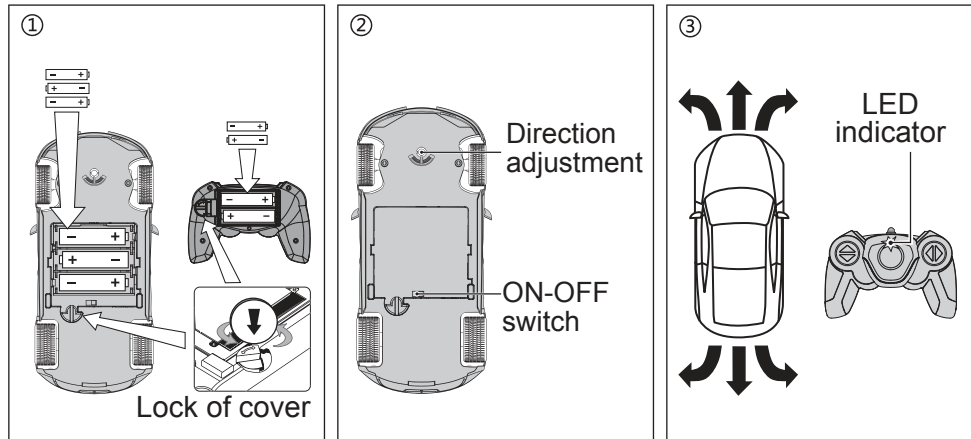




# INSTRUCTIONS

This manual is applicable to the following types of product:  
92900, 80445B308D8.

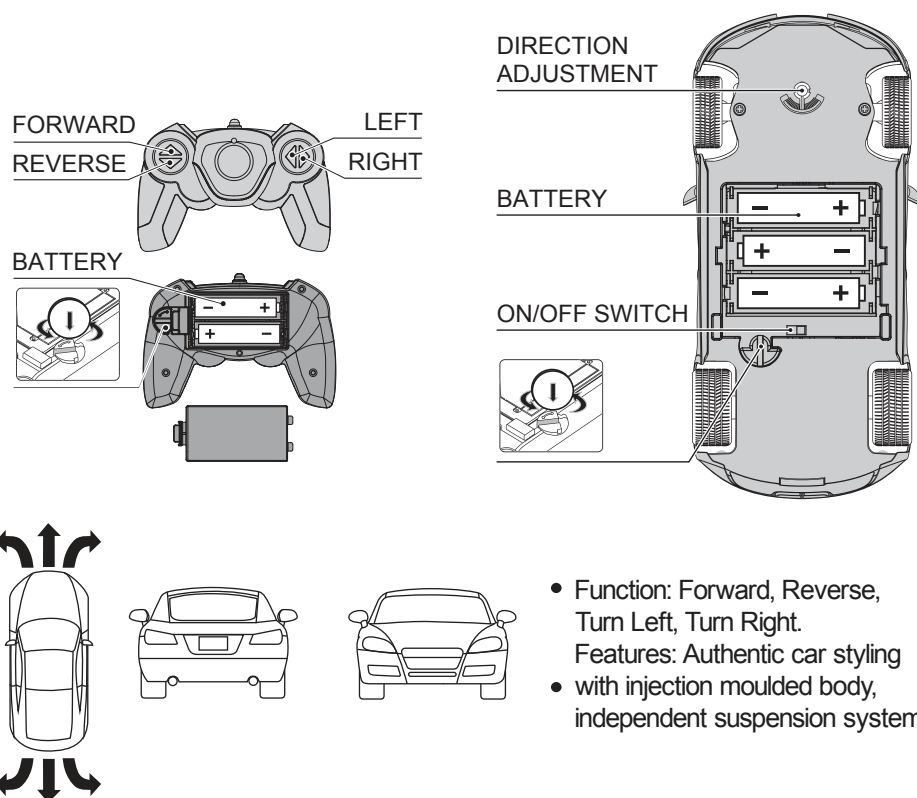
## OPERATION GUIDE



- The fixing piece for chassis can be used to twist the lock of the battery cover, please see the picture on the right. See picture 1.
- Please open the lid and put 3 X 1.5V “AA” batteries into the car according to its polarity, then close the lid and rotate the knob to lock the battery cover. See picture 1.
- Please open the lid and put the 2 X 1.5V “AA” batteries into the controller according to its polarity, then close the lid and twist the chassis piece to lock the battery cover. See picture 1.
- Every time before playing, the transmitter needs to pair with the model car as follows:
  - ◆ The LED indicator on the transmitter will blink and ready for pairing. Switch on the model car, the LED on the transmitter will go out. This means the pairing process is completed. Then the model car can be fully controlled by the transmitter. See picture 3.
- Adjust the direction adjustment switch to control the car running in a straight line.
- Please replace battery when LED indicator becomes dark which means low battery.
- The speed of model car will slow down when battery is low. Please replace then.
- 2.4GHz transmitters are compatible to control several model cars at same time without interference, provided that the pairing process is orderly done one by one following above steps. That is, first transmitter finishes pairing with first model car and keep their power on, then second transmitter can begin to pair with second model car...
- Please turn off the model car after playing.

## FEATURES & FUNCTION

This product uses 2.4GHz communication technology, which is compatible for multi-device and multi-user, with fast response speed, high response precision, and strong anti-interference capability.



## CAUTION

- Different types of batteries or new and used batteries are not to be mixed. Exhausted batteries are to be removed from the toy.
- Replace the batteries under adult supervision. Batteries are to be inserted with the correct polarity. The supply terminals are not to be short-circuited.
- Non-rechargeable batteries are not to be recharged. Rechargeable batteries are to be removed from the toy before being charged. Batteries are to be charged by an adult, leaked or broken batteries are not to be charged.
- Rechargeable batteries are only to be charged under adult supervision.
- Only batteries of the same or equivalent type are recommended to be used.

- Never put the batteries near fire or any source of heat, water or direct sunlight.
- Skin or clothing is to be washed immediately if you make contact with leaked liquid from the battery.
- For better preservation of rechargeable batteries, please regularly recharge them. Only a charger of the same or equivalent type is recommended to be used.
- Batteries must be regularly checked for damage.
- Dispose of batteries responsibly, do not dispose of in fire.

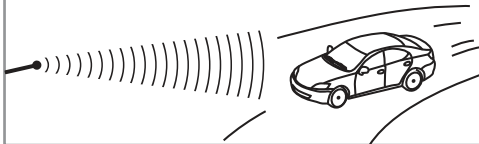
- When your vehicle starts to lose power, it may lose its functions or performance. This indicates that it's time to refresh your batteries or recharge them.



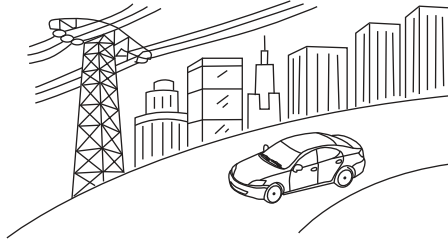
- Don't drive your vehicle in sand, through water or snow.



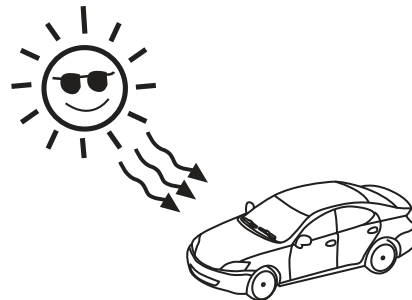
- Point your transmitter antenna up not down toward your vehicle. If your vehicle gets too far away, it won't work properly. If your transmitter has an antenna carry-loop feature, make sure the antenna is removed from the holder and straightened before operating.



- Do not operate your car on the streets where people gather or under high voltage wires. Stay safe!



- Don't put your vehicle near heat or in direct sunlight. Always turn switches OFF after operating.



Car pictures demonstrated above may vary from the toys.

## MAINTENANCE AND REPAIR

- Remove the batteries when the unit is not in use for long periods of time.
- Clean the vehicle with a soft cloth.
- Avoid being heated or being exposed to strong sunlight.
- Keep dry.
- Batteries must be regularly checked for damage.

NOTE: This equipment has been tested and found to comply with the limits for a Class B digital device, pursuant to part 15 of the FCC Rules.

These limits are designed to provide reasonable protection against harmful interference in a residential installation.

This equipment generates, uses and can radiate radio frequency energy and, if not installed and used in accordance with the instructions, may cause harmful interference to radio communications.

However, there is no guarantee that interference will not occur in a particular installation. If this equipment does cause harmful interference to radio or television reception, which can be determined by turning the equipment off and on, the user is encouraged to try to correct the interference by one or more of the following measures:

- Reorient or relocate the receiving antenna.
- Increase the separation between the equipment and receiver.
- Connect the equipment into an outlet on a circuit different from that to which the receiver is connected.
- Consult the dealer or an experienced radio/TV technician for help.

This device complies with Part 15 of the FCC Rules.

Operation is subject to the following two conditions:

- (1) this device may not cause harmful interference, and
- (2) this device must accept any interference received, including interference that may cause undesired operation.

Warning: Changes or modifications to this unit not expressly approved by the party responsible for compliance could void the user's authority to operate the equipment.

Frequency bands:  
2400MHz to 2483.5MHz

Maximum Transmitting Power (EIRP) :  
Not more than 10mW.



**WARNING:**

CHOKING HAZARD-Small parts.  
Not for children under 3 years.

The instruction has to be kept since it contains important information.

**RASTAR GROUP**

Add: Xinghui Industrial Park, Xiadao Road, Shanghua,  
Chenghai, Shantou, Guangdong, China.

[Http://www.rastar.com](http://www.rastar.com)