

Measurement Report for WLAN 2.4GHz, BACK

Exposure Conditions

Band	WLAN 2.4GHz	TSL Permittivity	38.0
Frequency [MHz] Channel Number	2437.000 6	TSL Conductivity [S/m]	1.76
Group UID	WLAN 10415-AAA	Phantom Section TSL	Flat HSL
Conversion Factor	8.28	Test Distance [mm]	0.00
Communication Configuration	IEEE 802.11b WiFi 2.4 GHz (DSSS, 1 Mbps, 99pc duty cycle)		

Hardware Setup

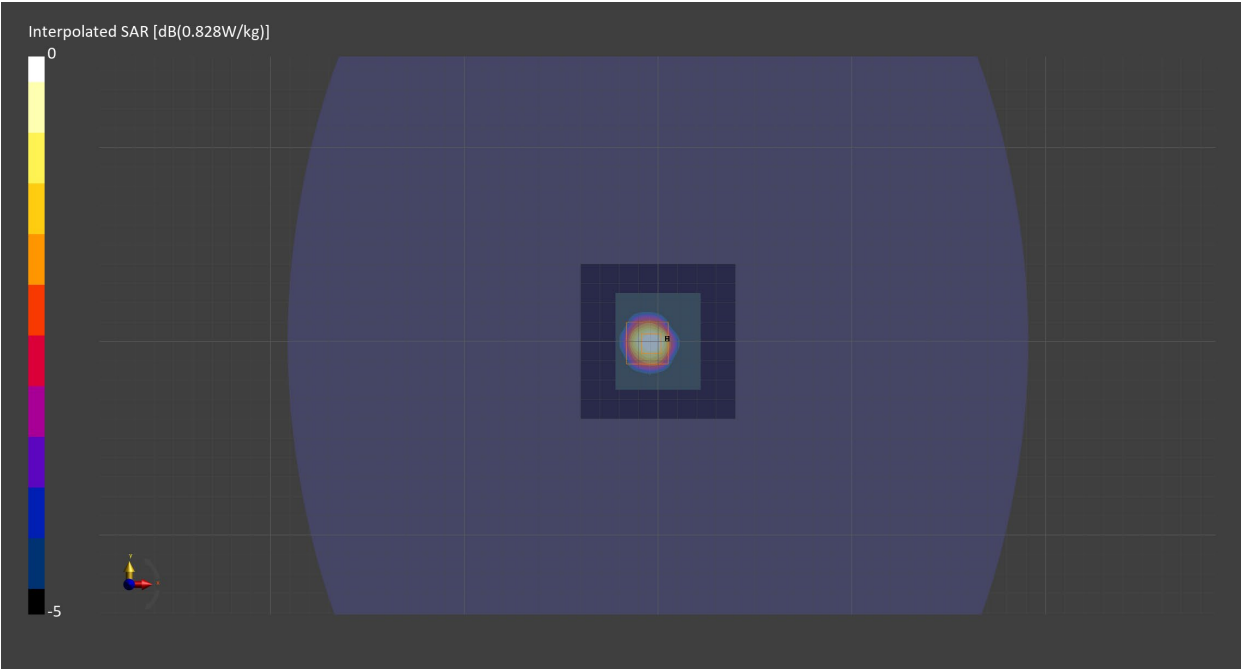
Probe Calibration Date	EX3DV4 - SN7711 2024-03-15	Phantom	ELI V8.0 (20deg probe tilt) - SN2160
DAE Calibration Date	DAE4 Sn1716 2024-03-13	TSL	HBBL-600-10000

Scans Setup

	Area Scan	Zoom Scan
Grid Extents [mm]	80.0 x 80.0	30.0 x 30.0 x 30.0
Grid Steps [mm]	10.0 x 10.0	5.0 x 5.0 x 1.5
Sensor Surface [mm]	3.0	1.4
Graded Grid	N/A	Yes
M2/M1 [%]		83.0
Dist 3dB Peak [mm]		11.7

Measurement Results

	Area Scan	Zoom Scan
psSAR1g [W/Kg]	0.444	0.460
psSAR10g [W/Kg]	0.212	0.225
Power Drift [dB]	-0.05	0.00



Measurement Report for ISM 2.4 GHz Band, BACK

Exposure Conditions

Band	ISM 2.4 GHz Band	TSL Permittivity	38.0
Frequency [MHz] Channel Number	2480.000 78	TSL Conductivity [S/m]	1.79
Group UID	Bluetooth 10032-CAA	Phantom Section TSL	Flat HSL
Conversion Factor	8.28	Test Distance [mm]	0.00
Communication Configuration	IEEE 802.15.1 Bluetooth (GFSK, DH5)		

Hardware Setup

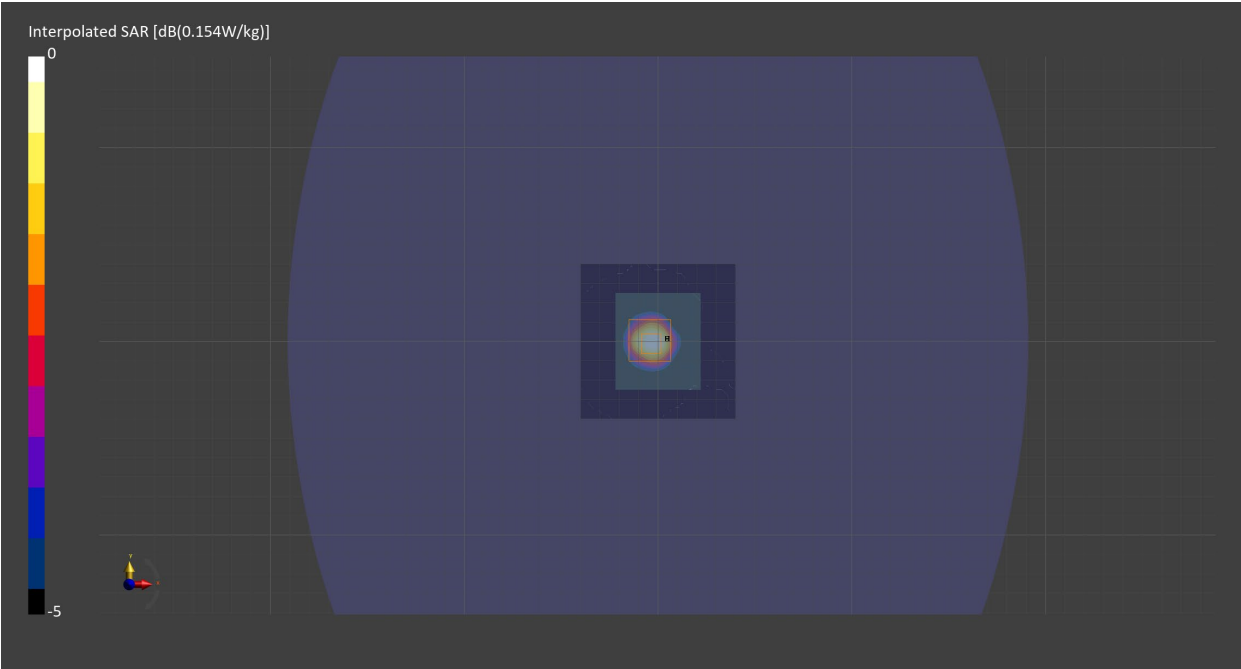
Probe Calibration Date	EX3DV4 - SN7711 2024-03-15	Phantom	ELI V8.0 (20deg probe tilt) - SN2160
DAE Calibration Date	DAE4 Sn1716 2024-03-13	TSL	HBBL-600-10000

Scans Setup

	Area Scan	Zoom Scan
Grid Extents [mm]	80.0 x 80.0	30.0 x 30.0 x 30.0
Grid Steps [mm]	10.0 x 10.0	5.0 x 5.0 x 1.5
Sensor Surface [mm]	3.0	1.4
Graded Grid	N/A	Yes
M2/M1 [%]		82.0
Dist 3dB Peak [mm]		10.0

Measurement Results

	Area Scan	Zoom Scan
psSAR1g [W/Kg]	0.082	0.084
psSAR10g [W/Kg]	0.038	0.039
Power Drift [dB]	-0.01	-0.01



Measurement Report for Custom Band, BACK

Exposure Conditions

Band	Custom Band	TSL Permittivity	52.6
Frequency [MHz] Channel Number	13.600 13600	TSL Conductivity [S/m]	0.717
Group UID	CW 0--	Phantom Section TSL	Flat HSL
Conversion Factor	16.02	Test Distance [mm]	0.00
Communication Configuration	CW		

Hardware Setup

Probe Calibration Date	EX3DV4 - SN7710 2024-01-16	Phantom	ELI V8.0 (20deg probe tilt) - SN2081
DAE Calibration Date	DAE4 Sn1715 2024-02-12	TSL Meas. Date	HBBL4-250V3 2024-Aug-22

Scans Setup

	Area Scan
Grid Extents [mm]	60.0 x 60.0
Grid Steps [mm]	15.0 x 15.0
Sensor Surface [mm]	3.0
Graded Grid	N/A
M2/M1 [%]	
Dist 3dB Peak [mm]	

Measurement Results

	Area Scan	Zoom Scan
psSAR1g [W/Kg]	0	-
psSAR10g [W/Kg]	0	-
Power Drift [dB]	N/A	N/A

