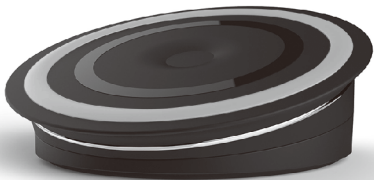


KINTEC
DIGITAL



KQI-S12

Fast Wireless Charging Pad

User Manual

This is a wireless charging pad that will charge any device that supports the Qi standard, Please read the user manual before using and keep it for future reference.

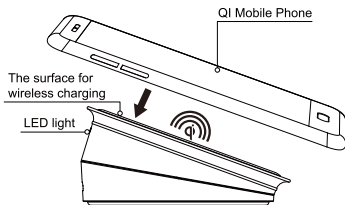
Standard Accessories:

- User Manual
- Wireless Charging Pad

Specifications:

- Input: 9V 1.67A
- Wireless Charger Output: 9V 1A
- Transmission Power: 9W
- Wireless Distance: $\leq 6\text{mm}$
- Efficiency: $\geq 75\%$
- Dimensions: 88 x 88 x 25mm
- Weight: 80g

Get to know your charging pad



- Single-Coil Qi Wireless Charger
- Soft charging pad prevents scratching and slipping
- Inductive Charging
- Charging Indicator LED
- Designed for Qi Compliance
- Includes micro-USB-to-USB cable

FCC Statement:

This device complies with part 15 of the FCC Rules. Operation is subject to the following two conditions:

- (1) This device may not cause harmful interference, and
- (2) this device must accept any interference received, including interference that may cause undesired operation.

This equipment has been tested and found to comply with the limits for a Class B digital device, pursuant to part 15 of the FCC Rules. These limits are designed to provide reasonable protection against harmful interference in a residential installation. This equipment generates, uses and can radiate radio frequency energy and, if not installed and used in accordance with the instructions, may cause harmful interference to radio communications. However, there is no guarantee that interference will not occur in a particular installation. If this equipment does cause harmful interference to radio or television reception, which can be determined by turning the equipment off and on, the user is encouraged to try to correct the interference by one or more of the following measures:

- Reorient or relocate the receiving antenna.
- Increase the separation between the equipment and receiver.
- Connect the equipment into an outlet on a circuit different from that to which the receiver is connected.
- Consult the dealer or an experienced radio/TV technician for help.

Caution: Any changes or modifications not expressly approved by the party responsible for compliance could void the user's authority to operate the equipment.



Address : 10F., No.191, Fuxing N. Rd., Songshan Dist.
Taipei City 105, Taiwan (R.O.C.)

Telephone : +886-2-2717-3538

Fax : +886-2-2547-1699

Website : www.kintecdigital.com

E-mail : sales@kintecdigital.com

Kintec Digital Co., Ltd.