

SMARTONE™ C USER MANUAL





This guide is based on the production version of the Globalstar SmartOne C™. Software changes may have occurred after this printing.

Globalstar reserves the right to make changes in technical and product specifications without prior notice.

Globalstar Inc.

1351 Holiday Square Blvd.

Covington, LA 70433

Copyright© 2021 Globalstar® Incorporated.

All rights reserved.

Globalstar® is a registered trademark of Globalstar Incorporated.

All other trademarks and registered trademarks are properties of their respective owners.

Printed in the United States of America

TABLE OF CONTENTS

SMARTONE C BASICS	1
OVERVIEW	1
MODES OF OPERATION	1
STANDARD MESSAGING	1
REDUCED MESSAGING.....	2
THEFT ALERT.....	2
INPUTS	3
SERIAL COMMANDS.....	3
SATELLITE COMMUNICATIONS	4
GLOBALSTAR SATELLITE NETWORK	5
GETTING STARTED	6
THE SMARTONE DEVICE.....	6
TURNING ON AND OFF.....	6
MOUNTING	6
PROGRAMMING OVERVIEW	7
INPUTS	7
INSTALLATION OF CONFIGURATION SOFTWARE	7
INSTALLATION OF WINDOWS USB DRIVER.....	7
CONNECTING DEVICES.....	7
SMARTONE CONFIGURATION SOFTWARE OVERVIEW	8
USER DATA ENTRY PANE.....	9
STATUS PANE	9
ELECTRONIC SERIAL NUMBER (ESN) STATUS DISPLAY TABLE	9
LIST ESN(S) BUTTON	10
VIEW SUMMARY BUTTON	10
PROGRAM BUTTON	10
MENU BAR	11
FILE MENU	11
TOOLS MENU.....	13
HELP MENU	16
USER DATA ENTRY PANE	17
GETTING STARTED TAB	17
STANDARD MESSAGING	17
STANDARD MESSAGING MODE - WITH MOTION	18
SMARTONE SOLAR ONLY – SPEED AND HEADING	18
REDUCED MESSAGING MODE	18
THEFT ALERT MODE	19
STANDARD MESSAGING - WITHOUT MOTION.....	20
LOCATION MESSAGES TAB	20
TIME(S) OF DAY MESSAGING.....	21
INPUT SETTINGS TABS	22
TYPE OF INPUT.....	23
OPTIONS TAB.....	23

STANDARD MESSAGING MODE - WITH MOTION	24
MOTION SETTINGS TAB.....	24
LOCATION MESSAGES TAB	25
TIME(S) OF DAY MESSAGING.....	26
INPUT SETTING TABS	27
STATUS CHANGED MESSAGE.....	27
UNDESIREd STATE MESSAGE.....	28
ACCUMULATE/COUNT MESSAGE.....	28
TYPE OF INPUT.....	29
OPTIONS TAB.....	30
REDUCED MESSAGING MODE	31
CHANGE LOCATION TAB	31
INPUT SETTINGS TABS	33
STATUS CHANGED MESSAGE.....	33
UNDESIREd STATE MESSAGE.....	34
ACCUMULATE/COUNT MESSAGE.....	34
TYPE OF INPUT.....	35
OPTIONS TAB.....	36
THEFT ALERT MODE.....	37
CHANGE LOCATION TAB	37
INPUT SETTINGS TAB	39
STATUS CHANGED MESSAGE.....	39
UNDESIREd STATE MESSAGE.....	40
ACCUMULATE/COUNT MESSAGE.....	40
TYPE OF INPUT.....	41
OPTIONS TAB.....	42
CONTINUOUS GPS MODE	43
CHANGE LOCATION TAB	43
ENABLING CONTINUOUS GPS MODE	43
MESSAGES.....	46
GLOBAL MESSAGE TYPE	46
TYPE 0 MESSAGE CLASS.....	46
LOCATION MESSAGE	47
DEVICE TURNED ON MESSAGE.....	47
CHANGE OF LOCATION AREA ALERT MESSAGE	48
INPUT STATUS CHANGED MESSAGE	48
UNDESIREd INPUT STATE MESSAGE	49
RE-CENTER MESSAGE.....	49
TYPE 1 MESSAGE CLASS	50
TRUNCATED MESSAGE TYPE – SINGLE PACKET	50
TRUNCATED MESSAGE TYPE – MULTIPLE PACKET VERSION.....	51
TYPE 2 MESSAGE CLASS	52
RAW MESSAGE TYPE – SINGLE PACKET VERSION	52
RAW MESSAGE TYPE – MULTIPLE PACKET VERSION	52
TYPE 3 MESSAGE CLASS.....	53

DIAGNOSTIC MESSAGE	53
REPLACE BATTERY MESSAGE.....	53
CONTACT SERVICE PROVIDER MESSAGE	54
ACCUMULATE/COUNT MESSAGE.....	54
MESSAGING PRIORITY.....	55
PRIORITIZATION OF PERIODIC STANDARD MESSAGE REPORT RATES	55
MESSAGE PRIORITIES.....	55
SERIAL COMMANDS	56
SERIAL PACKET FORMAT (COMMANDS AND RESPONSES)	56
SERIAL PACKET FIELDS	56
CRC ALGORITHM.....	57
SERIAL PACKET TYPES	57
SEND TRUNCATED MESSAGE (SERIAL MESSAGE TYPE 0X26)	58
SEND RAW MESSAGE (SERIAL MESSAGE TYPE 0X27)	59
THE HANDSHAKE LINE	60
CONNECTING SERIAL DEVICES TO THE SMARTONE	61
APPENDIX A - GLOSSARY OF TERMS	62
APPENDIX B - TECHNICAL SUPPORT	65
APPENDIX C - RF RADIATION EXPOSURE STATEMENT	66
APPENDIX D - REGULATORY NOTICES	67
FCC/IC NOTICES.....	67
CAN ICES-3(A)/NMB-3(A)	67
AVIS DE LA FCC/IC.....	67
CAN ICES-3(A)/NMB-3(A)1	67
CE NOTICES.....	68
APPENDIX E – GENERAL WARNINGS	69
APPENDIX F – SPECIFICATIONS & STANDARDS	70
APPENDIX G – LATITUDE/LONGITUDE DECODING	71
APPENDIX H – STANDARD MESSAGE DECODING	72
APPENDIX I - DIAGNOSTIC MESSAGE DECODING.....	73
APPENDIX J - ACCUMULATE/COUNT MESSAGE DECODING.....	74
APPENDIX K - EXTERNAL INPUT CABLES	75
APPENDIX L – BATTERY LIFE ESTIMATE.....	76

SMARTONE C BASICS

OVERVIEW

The SmartOne C is designed to track the positions of trailers, cargo containers, heavy construction equipment, generators, boats/barges and any other mobile assets. The SmartOne C also has 2 dry contact inputs, to manage run time of engines and/or other alarm inputs, and one serial port for passive and smart sensors.

The SmartOne C processes GPS satellite signals to obtain its position in terms of longitude and latitude and transmits this information over Globalstar's Satellite Network. In addition to position information, the SmartOne C transmits other message types that include battery status, input alarm status and diagnostic information. The SmartOne C is configured using a computer and USB configuration cable to communicate these messages at certain times and/or under certain conditions.



NOTE: Unless specifically called out otherwise, SmartOne in this manual refers to a SmartOne C unit. Also, Globalstar is only responsible for ensuring that the SmartOne C meets the published manufacturing specifications described herein.

MODES OF OPERATION

The SmartOne can be configured to operate in three different Modes:

- Standard Messaging Mode
- Reduced Messaging Mode
- Theft Alert Mode

STANDARD MESSAGING

In Standard Messaging Mode, the SmartOne reports its position based on the choices programmed during the configuration process. Location messages can be programmed to be sent at a constant interval or at specific Times of Day. Up to 12 different Time(s) of Day (TOD) may be utilized, but there must be at least 35 minutes between each chosen TOD.

With Motion: Standard Messaging Mode can also be configured to utilize the SmartOne's internal motion sensor. If enabled, the SmartOne will transmit its position at independently configured regular time intervals when the device is In Motion.

- **Example of Message Interval:** The SmartOne is configured to report once every 24 hours when not In Motion and every 2 hours when In Motion. When the SmartOne meets the programmed criteria to be In Motion, Normal Location messages will be sent every 2 hours until it meets the programmed criteria to be At Rest. (See the Motion Settings Tab section for selecting In Motion criteria.)
- **Example of Message-Time(s) of Day:** The SmartOne is configured with a message time of day of 9:00am, a second message time of day of 12:00 noon, a third message time of day of 8:00pm and once per hour when In Motion. The SmartOne would transmit Normal Location messages at the configured times every day when At Rest. When the SmartOne meets the programmed criteria to be In Motion, it will transmit its location message every hour until it meets the programmed criteria to be At Rest.

- **Usage Example:** A Company is required to report the GPS locations of their hazardous chemical containers twice a day. Based on this requirement the Company has 2 options:
 - Interval Messaging - Set a message interval of every 12 hours; the 12-hour interval begins when the device is powered up.
 - Time(s) of Day Messaging – Set two Times of Day that best fit with the workday (e.g., 7:00 am and 6:00 pm or 12:00 noon and 12:00 midnight).

REDUCED MESSAGING

Reduced Messaging Mode extends the battery life associated with transmitting messages over Globalstar's satellite network by sending messages at a minimal message interval when the asset is in a defined area and transmits at a higher message interval when the asset is changing locations. These message intervals are set as part of the configuration process based on the concept that repeated reporting information of the same location, when an asset has not moved from its defined area, is redundant and doesn't provide additional usable information about its current location.

By comparing current and prior position information, the SmartOne determines if its location is changing. The definable area in which the device should remain in Reduced Messaging Mode is a square called the Change of Location Area. When the SmartOne goes outside of the square, its location is considered to be changing or relocating.

Usage Example: A fleet operator owns 1,000 trailers. When the trailer(s) are sitting at a depot they want a location message once a day. They also want a message notification within 1 hour when a trailer has left a depot. Lastly, they want a location message every 3 hours when a trailer is moving between depots. Based on this requirement, the fleet operator will need to set the Change of Location Area (size of the depots where the trailers will visit), the message interval while the trailers are inside the Change of Location Area (1 per day), the interval at which the SmartOne will check its location while in a State of Vibration and inside the Change of Location Area (1 per hour), and the In Motion message interval while the trailers are in transit between depots (every 3 hours).

THEFT ALERT

When the SmartOne is configured to operate in the Theft Alert Mode, it differentiates between authorized and unauthorized movement of an asset. While the power to the SmartOne is turned off, all movement of the asset is considered authorized. When power is turned on, the SmartOne obtains a position from GPS satellites. The position is used to set the center of the defined Change of Location Area in Theft Alert Mode. While in the Change of Location Area, the SmartOne obtains position fixes at an interval set during configuration. As long as the SmartOne remains within the Change of Location Area all movement is considered to be authorized.

Once the SmartOne's position is outside of the Change of Location Area, it alerts the SmartOne to an unauthorized movement and immediately sends a location message (Change of Location Alert Message). The SmartOne continues to send location messages at a message interval set during the configuration process until the power is turned off or the battery is dead.

Usage Example: A construction company is working on a job site for 1 year and wants to ensure that their generators and other heavy equipment on site aren't stolen. The company wants to check the location of their equipment 12 times a day, every 2 hours, to confirm the asset hasn't been stolen, but only wants a transmitted location message once per day. Based on this requirement, the construction company will need to set the Change of Location Area (size of the job site), the message interval while inside the Change of Location Area (1 per day), the interval at which the SmartOne will check its location while in a State of Vibration and within the Change of Location Area (every 2 hours) and the message interval if the asset is outside the Change of Location Area.

INPUTS

The SmartOne has a multi-functional user interface that provides ground, two dry contact inputs, power and soft-power down, and serial communication lines.

The SmartOne allows sending Input Status Changed Messages for both Input 1 and Input 2. The Inputs must be asserted for at least 5 seconds in order to be acknowledged.

Usage Example: A construction company needs to document, per their contract, when they begin their work day and when they end their work day. Based on this requirement, the SmartOne would be connected to the ignition switch and configured to send a transmission with location when the input changes state.

The SmartOne also allows the user to define the Message Interval while the Inputs are in an Undesired State, either Opened or Closed.

Usage Example: A company has remote containers at job sites and would like to know if a door is ajar. If a door is left ajar the company would like a notification every 2 hours. Based on this requirement, the SmartOne would be connected to an open door sensor with the Undesired Input State Message enabled and set as Opened with a Message Interval of 2 hours.

NOTE: By default, the SmartOne uses a 5 minute "hysteresis" window to prevent sending false alarms. This means that only one status change message can be sent during any 5 minute time window. Any subsequent status changes will be detected but not reported. Multiple status changes during any 5 minute window will result in the transmission of incorrect trigger bits. Refer to the section for Input Status Changed Message. The Hysteresis may be changed to 0 minutes using the Configuration Software Program; refer to the Tools Menu Section for details.

The SmartOne has the ability to send an Accumulate/Count Message at a regular configurable interval and/or based on configurable multiples of accumulated hours and/or number of counted events or hours of vibration.

Usage Example 1: A construction company needs weekly engine run times for their heavy equipment to manage their maintenance scheduling. Based on this requirement, the company would schedule a weekly Accumulate/Count Message.

Usage Example 2: A construction company wants to ensure that no equipment is ever operated beyond 400 hours without maintenance. Based on this requirement, the company would schedule an Accumulate/Count Message for every 400 hours of use.

The SmartOne has the ability to send both Status Change and Undesired State messages based on vibration.

SERIAL COMMANDS

The SmartOne uses the multi-functional user interface for unit configuration as well as interface to remote passive and smart sensors. Two commands are provided in the unit interface to support smart sensors. External sensors or instruments, that can format and communicate with the SmartOne, can send user data through the SmartOne by using these two commands.

The SmartOne connects to smart sensors via the SmartOne External Input Cable (see Appendix K – External Input Cable)

SATELLITE COMMUNICATIONS

The SmartOne communicates with both the GPS satellite network and the Globalstar Satellite Network. All GPS locations are pulled from the GPS network and all transmissions are sent via the Globalstar Satellite Network.



The SmartOne has the unique ability to check its GPS coordinates at a programmable rate while it is inside of the Change of Location Area without actually sending a message over the Globalstar Satellite Network.

For a Location Message, the SmartOne will wake up at a scheduled interval or time of day and begin to acquire a GPS fix. Once it receives its GPS fix, the SmartOne will transmit its location to the Globalstar Satellite Network.

GLOBALSTAR SATELLITE NETWORK

The network is a Low Earth Orbit (LEO) satellite constellation with the satellites constantly orbiting the earth and completing their respective orbit in less than 2 hours. Because of this, the SmartOne will be in contact with at least one of the satellites during each scheduled transmission. In LEO communication networks, the satellites are constantly changing their positions in the sky relative to the transmitter on earth. This minimized the shading effects seen in geostationary satellite systems where the mobile device must be pointed toward a specific direction in the sky. Geostationary satellites also orbit at a much higher altitude and move along the equator.



Messages are transmitted from the SmartOne via the Globalstar Satellite Network using an uplink-only connection (one-way data transmission) and received by a Globalstar Ground Station. The messages are then sent via an HTTP or FTP server to the Internet and received by the VAR or end customer's back office application and converted into actionable data.

The SmartOne will send each message 3 times to ensure that the message has been received by the Globalstar Satellite Constellation. Once Globalstar receives the message, any remaining duplicate messages are ignored and discarded (VAR or end user account is only charged for 1 transmission).

GETTING STARTED

THE SMARTONE DEVICE

INSTALLING BATTERIES

The SmartOne is powered by, and comes with, four 1.5V Lithium AAA batteries. The battery compartment is accessible from the bottom of the device by removing the four Philips head screws. Remove the water-tight cover and insert the batteries to align with the positive and negative markers.

NOTE: When the batteries are removed and replaced the device will retain its configuration.

CAUTION: Replaceable Batteries: Risk of explosion of battery if replaced by an incorrect type. Dispose of used batteries according to the manufacturer's instructions.

CAUTION: Upon replacing the Battery Compartment Cover, tighten the screws according to specification (36 inch-ounces); otherwise the unit may no longer retain its water-tight capability. Ensure the cover is reinstalled and tightened to specification (36 inch-ounces).

TURNING ON AND OFF

To turn the device ON or OFF, remove the connector cover from the end of the device. Then slide the switch actuator towards the desired direction of the ON or OFF markings.

MOUNTING

The SmartOne C is designed to be mounted to an asset using double-sided adhesive tape and/or the included mounting bracket. The mounting bracket includes 4 threaded pem nuts and 4 screws which allow easy attachment to the SmartOne. The bracket also has four additional through-holes, used for mounting to assets (screws for asset mounting not included). The included mounting options allow for various secure mounting methods while providing proper orientation of the device for reliable communication with Globalstar's satellite constellation.

NOTE: The antenna is located under the product's cover where the statement **"THIS SIDE TOWARDS SKY DO NOT PAINT"** is seen.

PHILLIPS HEAD SCREWS



PHILLIPS HEAD SCREWS

ON-OFF SWITCH



MOUNTING BRACKET SCREWS



MOUNTING BRACKET SCREWS

PROGRAMMING OVERVIEW

The SmartOne comes ready to use with a factory configuration loaded in the device. The factory configuration, Standard Messaging without Motion and Interval Messaging of 12 hours, may be changed using the SmartOne Configuration Software, the USB Configuration Cable and a (Windows) PC.

INPUTS

The SmartOne has two dry contact inputs that can be accessed by using the SmartOne External Input Cable, which is sold as an accessory to the device.

INSTALLATION OF CONFIGURATION SOFTWARE

The SmartOne Configuration Software can be downloaded from the Globalstar website at <http://var.globalstar.com>. Log into your VAR account using your username and password. The Configuration Software is located in the software downloads section and is supported by Windows 10, Windows 7, Windows Vista, Windows XP Service Pack 2, Windows 2000 and Windows 98.

INSTALLATION OF WINDOWS USB DRIVER

In order to properly connect to the SmartOne unit using the USB Configuration Cable, the required USB device driver must be installed on the PC running the Windows Operating System. In particular, the device driver for using the USB Configuration Cable is supplied by Prolific (PL2303_Prolific_DriverInstaller_v1.18.0B.zip) and may be downloaded at the following link:

http://www.prolific.com.tw/US/ShowProduct.aspx?p_id=225&pcid=41.

Download the ZIP file, unpack it, then run the DriverInstaller executable. It will seamlessly install the correct USB device driver for use with the SmartOne USB Configuration Cable.

CONNECTING DEVICES

The SmartOne, with batteries installed and battery cover screwed down, connects to a PC using a USB Configuration Cable. Since the Windows Operating System needs to install the driver for the SmartOne USB Configuration Cable, first connect the cable to the PC, then to the SmartOne unit. The USB Configuration Cable plugs into the SmartOne when the connector cover is removed. The SmartOne Configuration Software may be used without being connected to devices to prepare configurations but must be connected to a device using the USB Configuration Cable to program it. Once the Program button has been depressed the USB Configuration Cable should not be disconnected, if already connected, from the device and/or the computer.

Caution: Upon replacing the Configuration Cable Cover, tighten the screws according to specification; otherwise the unit may no longer retain its water-tight capability.



USB Configuration Cable

SMARTONE CONFIGURATION SOFTWARE OVERVIEW

Once installed on a PC, the SmartOne Configuration Software is used to configure a SmartOne unit. The configuration has a tab-based, context-switched user data entry pane on the top screen of the window and a static status pane on the bottom.



USER DATA ENTRY PANE

The user data entry pane contains a context-switched user entry area for displaying and inputting configuration data. The information is organized in pages with page manipulation provided through tabs along the top of the pane. Selecting a tab will change the context of the upper pane. The tabs are named to group similar functions on the same page. The tabs will change according to the operation Mode selected. The Back and Next buttons allow the user to move from tab to tab without clicking on the tab name.



STATUS PANE

The Status Pane contains a table with a list of devices connected to the PC, their ESN(s), firmware version and COMM port assigned to each device as well as the execution buttons for configuring connected SmartOne(s).



ELECTRONIC SERIAL NUMBER (ESN) STATUS DISPLAY TABLE

- **ESN** - This column displays a list of the Electronic Serial Numbers for SmartOne(s) connected to the PC.
- **FW Ver** - This column displays a list of firmware version for the main processor for each SmartOne in the list.
- **COM** - This column displays a list of the assigned communication ports for each SmartOne.
- **Status** – This column displays the baud of the S1C connected to the PC.

LIST ESN(S) BUTTON

The **List ESNs** button shall cause the Configuration Software to search for any valid devices that are connected to the PC via Serial Port. The search status bar indicates progress while this search is being performed.

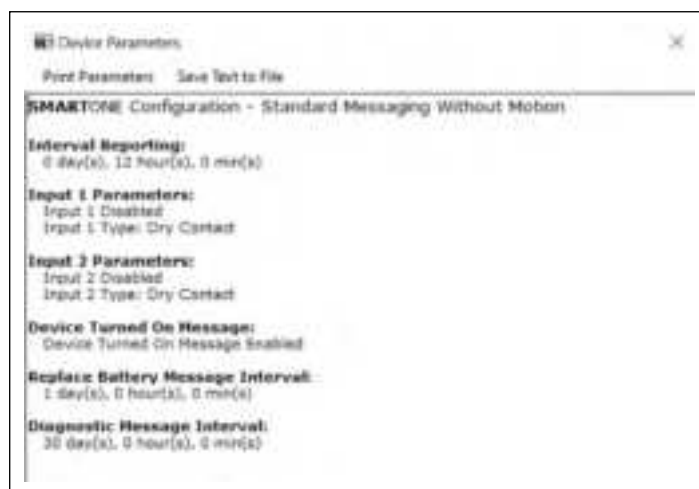


NOTE: Bluetooth is only available for SmartOne Solar devices.

VIEW SUMMARY BUTTON

The View Summary button displays a plain text readout of the current configuration set up in the program.

The Menu Bar in the View Summary Window allows the user to either print the parameters or save the configuration parameters to a text file.



PROGRAM BUTTON

The **PROGRAM** button in the Status Pane is used to send the configuration to the connected SmartOne unit(s). The user must confirm the Units to Program before execution of the function. (A status bar informs the user that the SmartOne device is being programmed.)



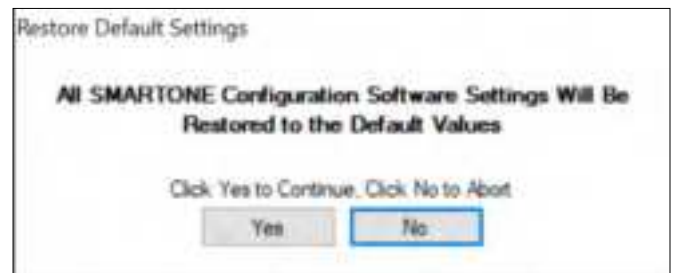
MENU BAR

The Menu Bar is listed at the top left of the Configuration Software program window. It contains three useful drop-down menus to navigate various functions of the program. The following paragraphs explain the functions included in the Menu Bar.

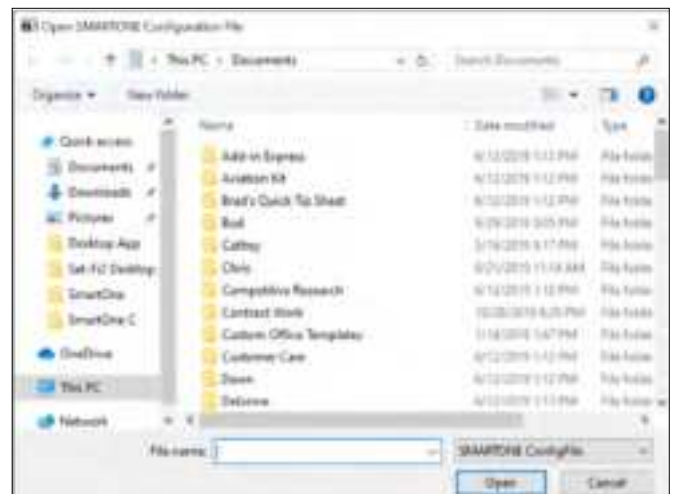


FILE MENU

- **New Configuration** - This will reset the values for all configurable parameters to default. Standard Messaging without Motion with a transmission every 12 hours is the default Mode of operation.
- This selection opens a prompt window asking for confirmation to restore all settings to their default. This will not affect the settings stored inside the connected SmartOne(s). The settings will only reset in the software display. The **PROGRAM** button must be clicked to download the configuration to any connected devices.

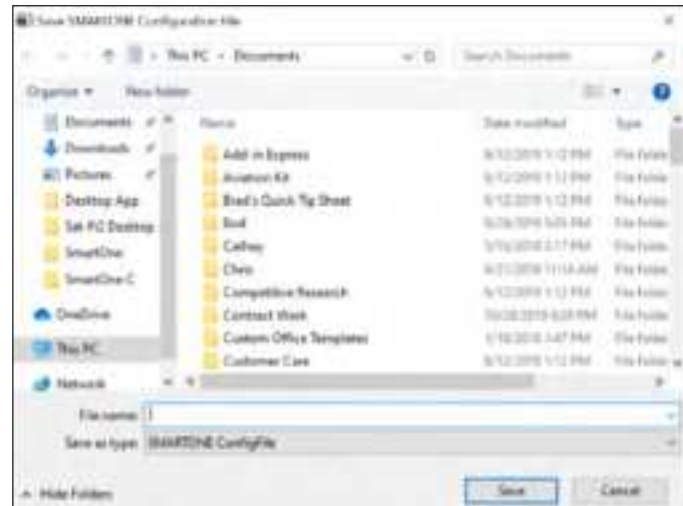


- **Open Configuration from File.** This opens a window allowing the user to browse for a valid configuration file that has previously been saved. Selecting a file will cause the settings contained in the file to be loaded into the software display only. The **PROGRAM** button must be clicked to download the configuration to any connected devices.



- **Read Configuration from SmartOne.** This will query the configurable parameters saved in a device connected to the PC. The values for each configurable parameter in the device will be displayed in the User Data Entry Pane.

- **Save Configuration.** This will open a window that allows the user to browse to a location and save the configuration settings.



- **Open Configuration from History.** Every time a device is successfully programmed, the configuration will save that occurrence to a text log file. The information stored is the ESN of the device, the local time at which it was programmed, and the actual configuration of the device.

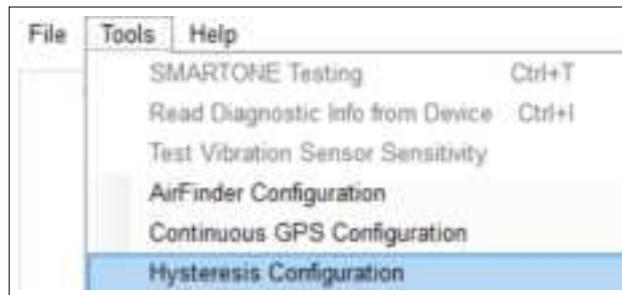
When selected, a window opens where the user can sort by ESN or date/time of programming and select a configuration. This loads the selected configuration settings into the User Data Entry Pane but not into any device(s) connected to the PC.



- **Exit.** This causes the configuration software program to close.

TOOLS MENU

NOTE: To effectively use the SmartOne Software Tools' testing and diagnostic features, connect to the SmartOne device while it has a good view of the sky to successfully transmit over the satellite network.



- **SmartOne Testing** - This command opens a window with the following options:
 - **SMARTONE(s)** - Displays a drop-down list of connected SmartOne units listed by ESN.
 - **Send Location Message Button** - Causes the SmartOne connected to the COM port to obtain a GPS fix and send a Location Message.
 - **Send Diagnostic Message Button** - Causes the SmartOne connected to send diagnostic information including battery status, GPS average search time, GPS fails and number of transmissions since last diagnostic message.
 - **Send Truncated Message Button** - Causes the SmartOne to seek a GPS location, and then send a Truncated SmartOne message (type 1). The hex-character data in the text box below the command will be appended to the GPS data and sent.
 - **Send Raw Message Button** - Causes the SmartOne to send the first 8 bytes of data in the text box below the command as the payload for the Raw Payload Message (type 2). The hex-character data in the text box below the command will be sent instead of the normal SmartOne position data.
 - **Close Button** - Causes the pop-up window to close.



- **Read Diagnostic Information from Device** - This command line causes the Configuration Software to query the diagnostic information from the SmartOne and display the information in a pop-up window in a text format.
- There are two menu options available in the pop-up window:
 - **Print Diagnostic** – Prints the diagnostic information.
 - **Save Text to File** – Opens a window, which allows the user to browse for a location and save the diagnostic information in a text file.



- **Test Vibration Sensor Sensitivity** - Is used to find the minimum, maximum and average vibration sensitivity detected by the sensor. This information helps to determine the appropriate Level of Sensitivity for the motion sensor. This window will update real time while connected to the SmartOne.

NOTE: Contact your Globalstar Regional Sales Manager for additional guidance in using this feature.

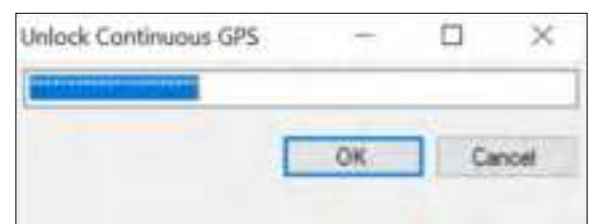


- **AirFinder Configuration**

NOTE: This feature is for use with SmartOne Solar only. Contact your Globalstar Regional Sales Manager for additional guidance in using this feature.

- **Continuous GPS Configuration** - This command opens an Unlock Continuous GPS Window to enable the ability to configure SmartOne C for continuous GPS.

NOTE: Use only with SmartOne C: See Continuous GPS Mode Section.



- **Hysteresis Configuration**



The SmartOne C device can be configured with a custom hysteresis value. The configuration software program can set the SmartOne C with a hysteresis value for either 0 or 5 minutes. Setting hysteresis to 0 minutes may result in aborting configured input status change or undesired state messages.

HELP MENU

- **Product Specification.** This opens a PDF displaying the selected SmartOne's technical specification document.
- **SmartOne Website.** This opens the selected SmartOne landing page located on the Globalstar website, displaying the specified SmartOne's features, accessories and purchasing information.



- **Mixed Products Welcome.** This opens a dialog box stating that the SmartOne Configuration Software has been updated for use with the newer versions of SmartOne. When moving from older to newer file configurations, simply follow the steps outlined in this popup.



- **About.** This pops up a window with the SmartOne Configuration version number.



USER DATA ENTRY PANE

GETTING STARTED TAB

The Getting Started Tab allows the user to select the Mode of operation for the SmartOne. The Modes include:

- Standard Messaging with or without motion
- Reduced Messaging
- Theft Alert Mode



STANDARD MESSAGING

STANDARD MESSAGING MODE - WITHOUT MOTION

The Standard Messaging without Motion Mode is selected for basic location functionality on the SmartOne. The SmartOne will automatically report its position at regular time intervals. The messages sent in this Mode are called Location Messages. These messages include the GPS coordinates of the actual location of the SmartOne.

In this Mode, the motion sensor is OFF.



STANDARD MESSAGING MODE - WITH MOTION

The Standard Messaging with Motion Mode is selected for basic tracking functionality with motion detection capabilities. The user defines the motion parameters for each application including the Level of Sensitivity of the motion sensor, Time to be in a State of Vibration and Time to be in a State of Lacking Vibration. The SmartOne can be set to report at a different rate, Message Interval while In Motion, compared to the Location Message Interval.



SMARTONE SOLAR ONLY – SPEED AND HEADING

Speed and Heading cannot be used for SmartOne C devices. This feature is for use with SmartOne Solar only. Contact your Globalstar Regional Sales Manager for additional guidance in using this feature.

REDUCED MESSAGING MODE

The Reduced Messaging Mode is ideal for asset management with reduced messaging capability of the SmartOne. The SmartOne creates a Change of Location Area of a configurable size around the device. If the SmartOne stays within its Change of Location Area, the number of transmissions will be reduced.

When the SmartOne leaves the Change of Location Area and returns to a State of Lacking Vibration, a new Change of Location Area is created around the SmartOne.



THEFT ALERT MODE

The Theft Alert Mode is ideal for assets that are high-risk for theft. In this Mode, the SmartOne creates a Change of Location Area around its location when powered. The size of the Change of Location Area is a configurable parameter equal to the distance the device must move to be considered outside the Change of Location Area. If outside the Change of Location Area, the SmartOne goes into alert mode, transmitting frequent messages until the asset is recovered. The message interval in alert mode is a configurable parameter with a default value of 30 minutes.



STANDARD MESSAGING - WITHOUT MOTION

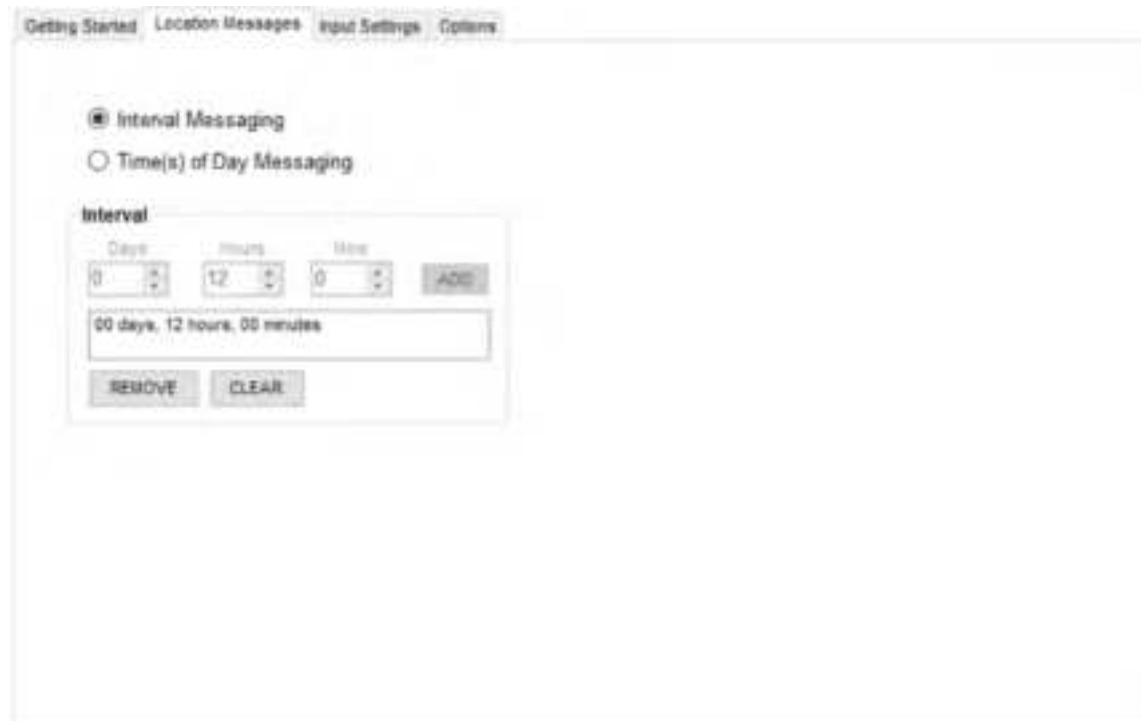
LOCATION MESSAGES TAB

INTERVAL MESSAGING

The SmartOne can be configured to report at a specific message interval specified by days, hours and minutes. The SmartOne accepts a single interval only. Initially, the default value of 12 hours will be entered for the Interval.

To enter a different Interval:

- Click the **REMOVE** or **CLEAR** button to delete the selected interval from the message Interval box.
- Click the **ADD** button to accept the Interval and add it to the message Interval box.



Getting Started Location Messages Input Settings Options

☒ Interval Messaging
☐ Time(s) of Day Messaging

Interval

Days: 0 Hours: 12 Minutes: 0 **ADD**

00 days, 12 hours, 00 minutes

REMOVE **CLEAR**

TIME(S) OF DAY MESSAGING

When selecting Time(s) of Day from Interval Messaging, the following informational warning message will be displayed:



The SmartOne can be configured to report at specific time(s) of day. The message interval box allows up to 12 times of day to send Location Messages. The minimal interval between Time of Day settings is 35 minutes. Initially, there will be no Time(s) of Day entered in the message interval box.

Create a Time of Day interval by selecting Hours and/or Minutes then:

- Click the **ADD** button to accept the interval and add it to the message interval box.
- Click the **REMOVE** button to delete the selected time of day from the message interval box.
- Click the **CLEAR** button to delete all the Time(s) of Day in the message interval box.



NOTE: Even in Time of Day Messaging mode, the dithering of messages is observed so, the first attempt of a message scheduled for 10:00 am could be sent at any time between 9:50 am and 10:10 am.

INPUT SETTINGS TABS

The Input Settings Tab allows a user to select either a Status Changed Message or an Undesired State Message for each SmartOne Input. The program will not allow a user to select both types for each Input.



- **Status Changed Message** - The SmartOne has two inputs that can be configured to send a Status Changed Message once the selected input Opens, Closes, or Both. The Message sent can either contain or not contain the GPS coordinates of the device at the time the status of the input(s) changed.
- **Undesired State Message** - The SmartOne can be configured to send messages throughout the time the input is in the undesired state, either to the Open or Closed position. The message interval while the input is active can be configured in Days, Hours, and Minutes. Once the input exits the Undesired State, the SmartOne will return to the message interval or Time (s) of Day for Location Messages.
- **Accumulate/Count Message** - The SmartOne can accumulate hours or count events based on the state of the inputs.
- **Message Interval** – If a Status Changed Message or an Undesired State Message was selected for either Input, the following message will be displayed:



If Time(s) of Day Messaging was selected, user must specify the times in the Location Message Tab (refer to Time(s) of Day Messaging on Page 18).

TYPE OF INPUT

NOTE: The Type of Inputs section is applicable for SmartOne Solar only.

For Input State Capture using SmartOne C devices, refer to description in the Input Status Changed Message Section and Undesired Input State Message Sections.

OPTIONS TAB



- **Device Turned On Message** - The SmartOne is configured to send a Device Turned On Message on Power-up by default.
- **Interval for Replace Battery Message** - The SmartOne can be configured to transmit a Replace Battery message based on a low battery condition.
 - To turn this feature on, select the Enabled checkbox.
 - Configuration range extends from 0 to 45 days in steps of a day. The default is 1 day.
 - The SmartOne will detect low battery conditions while at least 100 more messages can still be transmitted.
- **Interval for Diagnostic Message** - The SmartOne can send a diagnostic message with information on the diagnostic status of the device.
 - To turn this feature on, select the Enabled checkbox.
 - The diagnostic message includes battery status, GPS average search time, GPS fails and number of transmissions since last diagnostic message.
 - Transmit interval of diagnostic messages with a transmission rate from 1 to 45 days. The default is 30 days.
- **SmartOne Solar Only** - This section is applicable to configuring SmartOne Solar devices only; refer to the SmartOne Solar User Manual for details.

STANDARD MESSAGING MODE - WITH MOTION

MOTION SETTINGS TAB

The Motion Settings Tab of the Configuration Software is used to define the Message Interval while In Motion. This tab also contains the Vibration Detection Settings, which defines the sensitivity of the vibration sensor and how it determines the device is In Motion.

NOTE: To be In Motion, the SmartOne device has to meet the In Vibration criteria as well as move outside of the 200 meter geofence.



- **Message Interval while In Motion** - This parameter defines the transmission interval of location messages while SmartOne is In Motion with a transmission rate between 5 minutes to 45 Days. The default is 10 minutes. To turn on this feature, select the Enabled checkbox.
- **Vibration Detection Settings Button** - This button activates the Vibration Detection Settings window which contains settings to define how the motion sensor determines that the SmartOne is in a state of vibration. These parameters include Accelerometer Sensitivity, Vibration Sensor Sensitivity, Time to be in a State of Vibration and the Time to be in a State of Lacking Vibration.



- **SmartOne C/Solar: Accelerometer Sensitivity** - The vibration sensor has a range of sensitivity from 2 to 7 (2 being most sensitive and 7 being least sensitive). The smaller the sensitivity level, the more sensitive the motion sensor would be to movement.
- **SmartOne B: Vibration Sensor Sensitivity** - The vibration sensor has a range of sensitivity from 4 to 31 (4 being most sensitive and 31 being least sensitive). The smaller the sensitivity level, the more sensitive the motion sensor would be to movement.
- **Time to be in a State of Vibration** - Time the motion sensor must be above the sensitivity level before entering a State of Vibration.
- **Time to be in a State of Lacking Vibration** - Time the vibration sensor must be below the sensitivity level before entering a State of Lacking Vibration.
- **Abort Save/Save Settings buttons** - Perform requested function of settings.

LOCATION MESSAGES TAB

The SmartOne can be configured to report at a specific message interval specified by days, hours and minutes. The SmartOne accepts a single interval only. Initially, the default value of 12 hours will be entered for the Interval; to enter a different Interval:

- Click the **REMOVE** or **CLEAR** button to delete the selected interval from the message Interval box.
- Click the **ADD** button to accept the Interval and add it to the message Interval box.



The screenshot shows a web-based configuration interface for the 'Location Messages' tab. At the top, there are navigation links: 'Getting Started', 'Station Settings', 'Location Messages' (which is highlighted), 'Input Settings', and 'Options'. Below the navigation bar, there are two radio buttons: 'Interval Messaging' (which is selected) and 'Time(s) of Day Messaging'. To the right of these buttons, the 'Current GMT Time' is displayed as '10:02' and the 'Current Local Time' is displayed as '11:02'. Below the radio buttons, there is an 'Interval' section. This section contains three input fields for 'Days', 'Hours', and 'Minutes'. The 'Days' field is set to '0', the 'Hours' field is set to '12', and the 'Minutes' field is set to '00'. To the right of these fields is an 'ADD' button. Below the input fields, there is a text box that displays '00 days, 12 hours, 00 minutes'. At the bottom of the 'Interval' section, there are two buttons: 'REMOVE' and 'CLEAR'.

TIME(S) OF DAY MESSAGING

When selecting Time(s) of Day from Interval Messaging, the following informational warning message will be displayed:



The SmartOne can be configured to report at specific time(s) of day. The message interval box allows up to 12 times of day to send Location Messages. The minimal interval between Time of Day settings is 35 minutes. Initially, there will be no Time(s) of Day entered in the message interval box. Create a Time of Day interval by selecting Hours and/or Minutes then:

- Click the **ADD** button to accept the interval and add it to the message interval box.
- Click the **REMOVE** button to delete the selected time of day from the message interval box.
- Click the **CLEAR** button to delete all the time of day(s) in the message interval box.



INPUT SETTING TABS

The Input Settings Tab allows a user to select either a Status Changed Message or an Undesired State Message for each SmartOne Input. The program will not allow a user to select both types for each Input.



STATUS CHANGED MESSAGE

- **Input 1/Input 2** - The SmartOne has two inputs that can be configured to send a Status Changed Message once the selected input Opens, Closes, or Both. The Message sent can either contain or not contain the GPS coordinates of the device at the time the status of the input(s) changed.



- **Vibration** - If Vibration is Enabled, the SmartOne can be configured to send a Status Changed Message once the device enters vibration, exits vibration, or both. The Message sent can either contain or not contain the GPS coordinates of the device at the time the status of the input(s) changed.



UNDESIRE STATE MESSAGE

- **Input 1/Input 2** - The SmartOne can be configured to send messages throughout the time the input is in the undesired state, either to the Open or Closed position. The message interval while the input is active can be configured in Days, Hours, and Minutes. Once the input exits the undesired state, the SmartOne will return to the message interval or time (s) of day for Location Messages.



- **Vibration** - If Vibration is Enabled, the SmartOne can be configured to send a Undesired State Message once the device is in a state of vibration or in a state of lacking vibration. The message interval, while selected undesired state is active, can be configured in Days, Hours, and Minutes.



ACCUMULATE/COUNT MESSAGE

- **Input 1/Input 2** - The SmartOne can accumulate hours and/or count events while input 1 or input 2 is enabled. The SmartOne can send an accumulate/count message once the configurable intervals are specified in days, hours, and minutes.



- **Vibration** - If Vibration is Enabled, the SmartOne can accumulate hours once the device enters a state of vibration or lacks a state of vibration. The SmartOne can send an accumulate message once the configurable intervals are specified in days, hours, and minutes.



NOTE: SOV = State Of Vibration; SOLV = State Of Leaving Vibration

- **Message Interval** - If a Status Changed Message or an Undesired State Message was selected for either Input, the following message will be displayed:



If Time(s) of Day Messaging was selected, user will specify the times in the Location Message Tab (refer to Time(s) of Day Messaging section).

TYPE OF INPUT

NOTE: The Type of Inputs section is applicable for SmartOne Solar only.

For Input State Capture using SmartOne C devices, refer to description in the Input Status Changed Message Section and Undesired Input State Message Sections.

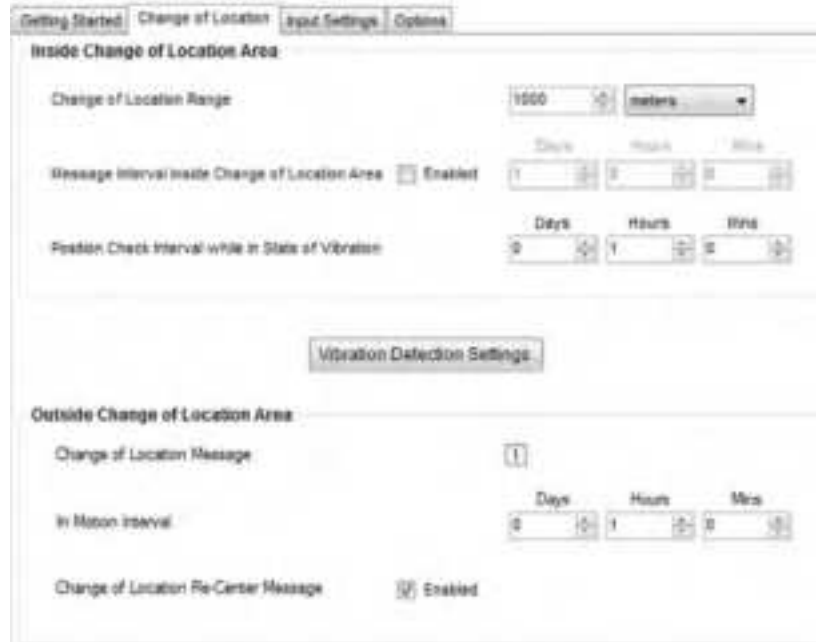
OPTIONS TAB



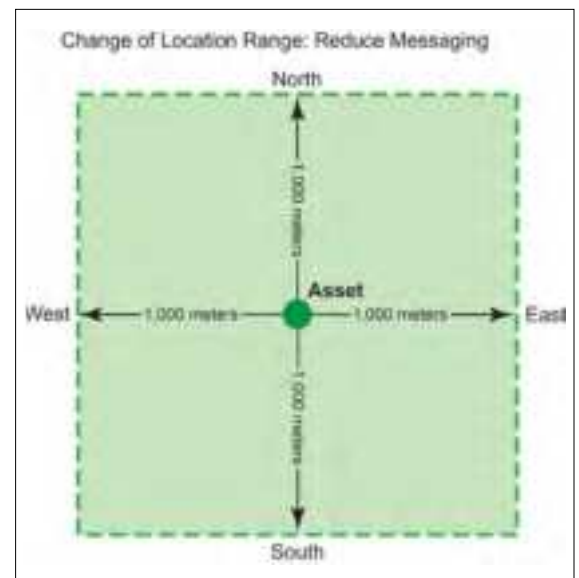
- **Device Turned On Message** - The SmartOne is configured to send a Device Turned On Message on Power-up by default.
- **Interval for Replace Battery Message** - The SmartOne can be configured to transmit a Replace Battery message based on a low battery condition.
 - To turn this feature on, select the Enabled checkbox.
 - Configuration range extends from 0 to 45 days in steps of a day. The default is 1 day.
 - The SmartOne will detect low battery conditions while at least 100 more messages can still be transmitted.
- **Interval for Diagnostic Message** - The SmartOne can send a diagnostic message with information on the diagnostic status of the device.
 - To turn this feature on, select the Enabled checkbox.
 - The diagnostic message includes battery status, GPS average search time, GPS fails and number of transmissions since last diagnostic message.
 - Transmit interval of diagnostic messages with a transmission rate from 1 to 45 days. The default is 30 days.
- **SmartOne Solar Only** - This section is applicable to configuring SmartOne Solar devices only; refer to the SmartOne Solar User Manual for details.

REDUCED MESSAGING MODE

CHANGE LOCATION TAB



- **Inside Change of Location Area** The parameters in this section define the functionality of the device while inside its Change of Location Area while in Reduced Messaging Mode.
- **Change of Location Range** - Specifies the length (in meters, kilometers, yards, or miles) from the center of the Change of Location Area.
- **Message Interval inside the Change of Location Area** - The SmartOne can be configured to transmit messages while inside the Change of Location Area. This parameter allows you to configure the message interval inside the Change of Location Area in days, hours and minutes. In the Reduced Messaging Mode, the asset will send infrequent messages if asset is in its Change of Location Area.
- **Position Check Interval while in State of Vibration** - The SmartOne can be configured to check GPS coordinates at a rate different from the transmission rate. This interval will determine the accuracy in time on how quickly the device will sense that it has left its Change of Location Area.



- **Vibration Detection Settings Button** - This button displays the Vibration Detection Settings window. This window contains settings to define how the motion sensor determines that the SmartOne is in a state of vibration. These parameters include Accelerometer Sensitivity, Vibration Sensor Sensitivity, Time to be in a State of Vibration and the Time to be in a State of Lacking Vibration.
 - **SmartOne C/Solar: Accelerometer Sensitivity.**
The vibration sensor has a range of sensitivity from 2 to 7 (2 being most sensitive and 7 being least sensitive). The smaller the sensitivity level, the more sensitive the motion sensor would be to movement.
 - **SmartOne B: Vibration Sensor Sensitivity.**
The vibration sensor has a range of sensitivity from 4 to 31 (4 being most sensitive and 31 being least sensitive). The smaller the sensitivity level, the more sensitive the motion sensor would be to movement.
 - **Time to be in a State of Vibration.** Time the motion sensor must be above the sensitivity level before being in a State of Vibration. If the device senses continuous vibration for a period of time less than the specified in this parameter, the device will ignore the vibration and will not enter into a State of Vibration.
 - **Time to be in a State of Lacking Vibration.** Time the vibration sensor must be below the sensitivity level before in a State of Lacking Vibration.
 - **Abort Save/Save Settings buttons.** Perform requested function of settings.
- **Outside Change of Location Area** - The parameters in this section define the functionality of the device while outside its Change of Location Area.
 - **Change of Location Alert Message** - The SmartOne can be configured to send a Change of Location Area Alert message when the device leaves the Change of Location Area. This special message can be processed by the back office application to send a notification to a cellular phone or to an email account that the asset has left the **Change of Location Area**. The number of Change of Location Area Alert messages sent by the device is set to 1 and cannot be altered by the user.
 - **In Motion Interval** - This parameter determines the message interval once the SmartOne device is outside the Change of Location Area and In Motion.
 - **Change of Location Re-Center Message** - If Enabled, once the SmartOne creates a new Change of Location Area after entering the At Rest State, it will send a Change of Location Re-Center Message.



INPUT SETTINGS TABS

The Input Settings Tab allows a user to select either a Status Changed Message or an Undesired State Message for each SmartOne Input. The program will not allow a user to select both types for each Input.



STATUS CHANGED MESSAGE

- **Input 1/Input 2** - The SmartOne has two inputs that can be configured to send a Status Changed Message once the selected input Opens, Closes, or Both. The Message sent can either contain or not contain the GPS coordinates of the device at the time the status of the input(s) changed.



- **Vibration** - If Vibration is Enabled, the SmartOne can be configured to send a Status Changed Message once the device enters vibration, exits vibration, or both. The Message sent can either contain or not contain the GPS coordinates of the device at the time the status of vibration changed.



UNDESIRE STATE MESSAGE

- **Input 1/Input 2** - The SmartOne can be configured to send messages throughout the time the input is in the undesired state, either to the Open or Closed position. The message interval while the input is active can be configured in Days, Hours, and Minutes. Once the input exits the undesired state, the SmartOne will return to the message interval or time (s) of day for Location Messages.

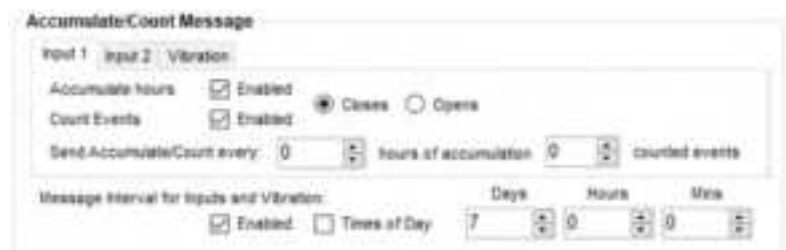


- **Vibration** - If Vibration is Enabled, the SmartOne can be configured to send an Undesired State Message once the device is in a state of vibration or in a state of lacking vibration. The message interval, while selected undesired state is active, can be configured in Days, Hours, and Minutes.

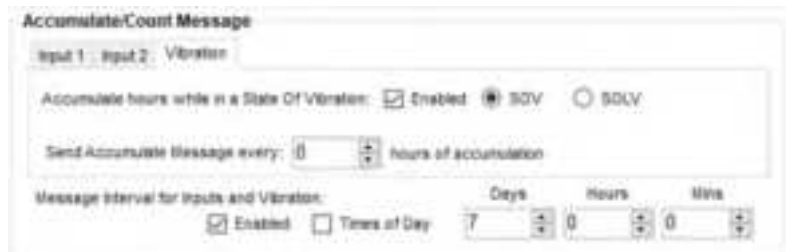


ACCUMULATE/COUNT MESSAGE

- **Input 1/Input 2** - The SmartOne can accumulate hours and/or count events while input 1 or input 2 is enabled. The SmartOne can send an accumulate/count message once the configurable intervals are specified in days, hours, and minutes.



- **Vibration** - If Vibration is Enabled, the SmartOne can accumulate hours once the device see my change before in the same Vibration section. The SmartOne can send an accumulate message once the configurable intervals are specified in days, hours, and minutes.



NOTE: SOV = State Of Vibration; SOLV = State Of Leaving Vibration

Message Interval - If a Status Changed Message or an Undesired State Message was selected for either Input, the following message will be displayed:



If Time(s) of Day Messaging was selected, user must specify the times in the Location Message Tab (refer to Time(s) of Day Messaging section earlier in document).

TYPE OF INPUT

NOTE: The Type of Inputs section is applicable for SmartOne Solar only.

For Input State Capture using SmartOne C devices, refer to description in the Input Status Changed Message Section and Undesired Input State Message Sections.

OPTIONS TAB



Getting Started | Location Messages | Input Settings | **Options**

Device Turned On Message Always Enabled

Interval for Replace Battery Message ☒ Enabled Days: 1, Hours: 0, Mins: 0

Interval for Diagnostic Message ☒ Enabled Days: 30, Hours: 0, Mins: 0

SmartOne Solar Only

Pin 1 Power ☐ Enabled

Beaconsing Mode ☐ Enabled

Bluetooth Sensor ☒ Enabled

String ID Default value ESH [String ID Config](#)

String ID verification with ESH ☐ Enabled

Development sensor key ☐ Enabled

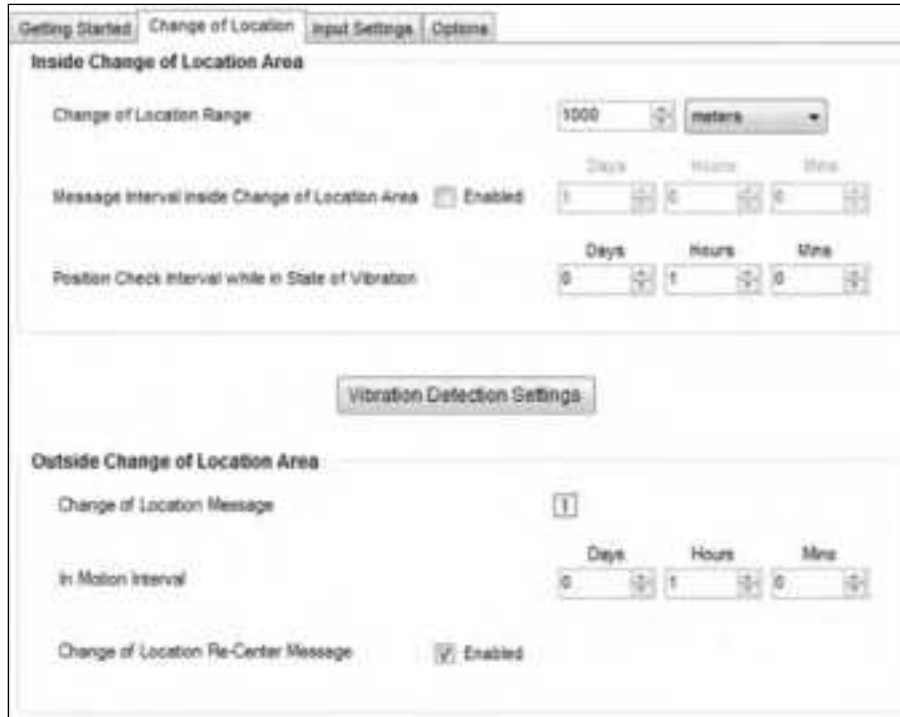
Beaconsing + GPRS Beaconsing

Beaconsing Interval: 30 OK

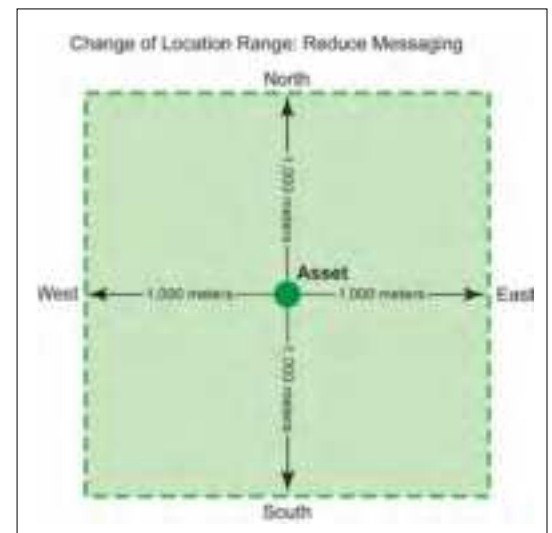
- **Device Turned On Message** - The SmartOne is configured to send a Device Turned On Message on Power-up by default.
- **Interval for Replace Battery Message** - The SmartOne can be configured to transmit a Replace Battery message based on a low battery condition.
 - To turn this feature on, select the Enabled checkbox.
 - Configuration range extends from 0 to 45 days in steps of a day. The default is 1 day.
 - The SmartOne will detect low battery conditions while at least 100 more messages can still be transmitted.
- **Interval for Diagnostic Message** - The SmartOne can send a diagnostic message with information on the diagnostic status of the device.
 - To turn this feature on, select the Enabled checkbox.
 - The diagnostic message includes battery status, GPS average search time, GPS fails and number of transmissions since last diagnostic message.
 - Transmit interval of diagnostic messages with a transmission rate from 1 to 45 days. The default is 30 days.
- **SmartOne Solar Only** - This section is applicable to configuring SmartOne Solar devices only; refer to the SmartOne Solar User Manual for details.

THEFT ALERT MODE

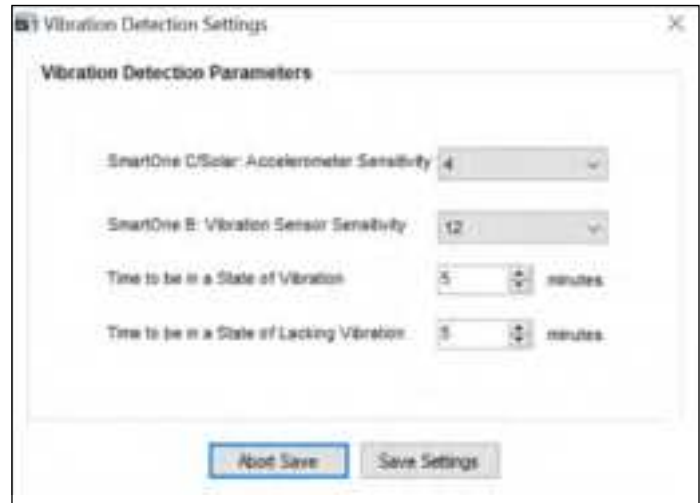
CHANGE LOCATION TAB



- **Inside Change of Location Area** - The parameters in this section define the functionality of the device while inside its Change of Location Area while in Reduced Messaging Mode.
- **Change of Location Range** - Change of Location Range - Specifies the length (in meters, kilometers, yards, or miles) from the center of the Change of Location Area.
- **Message Interval inside the Change of Location Area** - The SmartOne can be configured to transmit messages while inside the Change of Location Area. This parameter allows you to configure the message interval inside the Change of Location Area in days, hours and minutes. In the Reduced Messaging Mode, the asset will send infrequent messages if asset is in its Change of Location Area.
- **Position Check Interval while in State of Vibration** - The SmartOne can be configured to check GPS coordinates at a rate different from the transmission rate. This interval will determine the accuracy in time on how quickly the device will sense that it has left its Change of Location Area.



- **Vibration Detection Settings Button** - This button displays the Vibration Detection Settings window. This window contains settings to define how the motion sensor determines that the SmartOne is in a state of vibration. These parameters include Accelerometer Sensitivity, Vibration Sensor Sensitivity, Time to be in a State of Vibration and the Time to be in a State of Lacking Vibration.
 - **SmartOne C/Solar: Accelerometer Sensitivity.** The vibration sensor has a range of sensitivity from 2 to 7 (2 being most sensitive and 7 being least sensitive). The smaller the sensitivity level, the more sensitive the motion sensor would be to movement.
 - **SmartOne B: Vibration Sensor Sensitivity.** The vibration sensor has a range of sensitivity from 4 to 31 (4 being most sensitive and 31 being least sensitive). The smaller the sensitivity level, the more sensitive the motion sensor would be to movement.
 - **Time to be in a State of Vibration.** Time the motion sensor must be above the sensitivity level before being in a State of Vibration. If the device senses continuous vibration for a period of time less than the specified in this parameter, the device will ignore the vibration and will not enter into a State of Vibration.
 - **Time to be in a State of Lacking Vibration.** Time the vibration sensor must be below the sensitivity level before in a State of Lacking Vibration.
 - **Abort Save/Save Settings buttons.** Perform requested function of settings.
- **Outside Change of Location Area** - The parameters in this section define the functionality of the device while outside its Change of Location Area.
 - **Change of Location Alert Message** - The SmartOne can be configured to send a Change of Location Area Alert message when the device leaves the Change of Location Area. This special message can be processed by the back office application to send a notification to a cellular phone or to an email account that the asset has left the Change of Location Area. The number of Change of Location Area Alert messages sent by the device is set to 1 and cannot be altered by the user.
 - **In Motion Interval** - This parameter determines the message interval once the SmartOne device is outside the Change of Location Area and In Motion.
 - **Change of Location Re-Center Message** - If Enabled, once the SmartOne creates a new Change of Location Area after entering the At Rest State, it will send a Change of Location Re-Center Message.



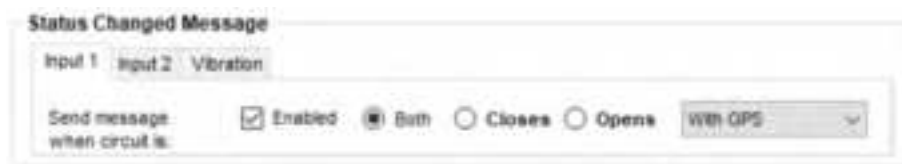
INPUT SETTINGS TAB

The Input Settings Tab allows a user to select either a Status Changed Message or an Undesired State Message for each SmartOne Input. The program will not allow a user to select both types for each Input.



STATUS CHANGED MESSAGE

- **Input 1/Input 2** - The SmartOne has two inputs that can be configured to send a Status Changed Message once the selected input Opens, Closes, or Both. The Message sent can either contain or not contain the GPS coordinates of the device at the time the status of the input(s) changed.



- **Vibration** - If Vibration is Enabled, the SmartOne can be configured to send a Status Changed Message once the device enters vibration, exit vibration, or both. The Message sent can either contain or not contain the GPS coordinates of the device at the time the status of the input(s) changed.



UNDESIRE STATE MESSAGE

- **Input 1/Input 2** - The SmartOne can be configured to send messages throughout the time the input is in the undesired state, either to the Open or Closed position. The message interval while the input is active can be configured in Days, Hours, and Minutes. Once the input is disabled, the SmartOne will return to the message interval or time (s) of day for Location Messages.

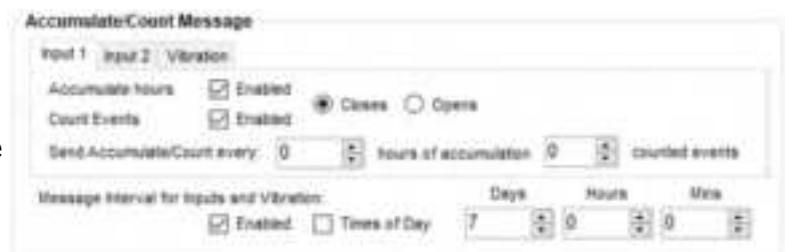


- **Vibration** - If Vibration is Enabled, the SmartOne can be configured to send a Status Changed Message once the device enters a state of vibration, lacks a state of vibration, or both. The message interval, while selected undesired state is active, can be configured in Days, Hours, and Minutes.

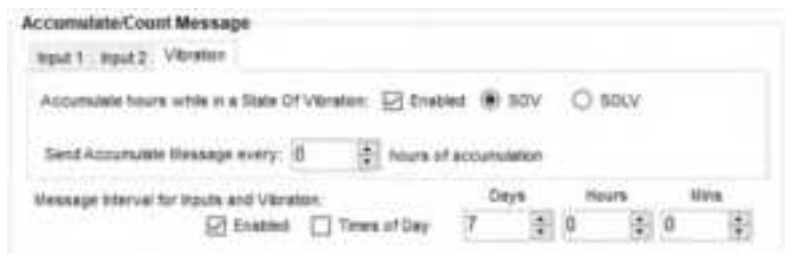


ACCUMULATE/COUNT MESSAGE

- **Input 1/Input 2** - The SmartOne can accumulate hours and/or count events while input 1 or input 2 is enabled. The SmartOne can send an accumulate/count message once the configurable intervals are specified in days, hours, and minutes.



- **Vibration** - If Vibration is Enabled, the SmartOne can accumulate hours once the device enters a state of vibration or lacks a state of vibration. The SmartOne can send an accumulate message once the configurable intervals are specified in days, hours, and minutes.



NOTE: SOV = State Of Vibration; SOLV = State Of Leaving Vibration

- **Message Interval** - If a Status Changed Message or an Undesired State Message was selected for either Input, the following message will be displayed:



If Time(s) of Day Messaging was selected, user will specify the times in the Location Message Tab (refer to Time(s) of Day Messaging section).

TYPE OF INPUT

NOTE: The Type of Inputs section is applicable for SmartOne Solar only.

For Input State Capture using SmartOne C devices, refer to description in the Input Status Changed Message and Undesired Input State Message Sections.

OPTIONS TAB



- **Device Turned On Message** - The SmartOne is configured to send a Device Turned On Message on Power-up by default.
- **Interval for Replace Battery Message** - The SmartOne can be configured to transmit a Replace Battery message based on a low battery condition.
 - To turn this feature on, select the Enabled checkbox.
 - Configuration range extends from 0 to 45 days in steps of a day. The default is 1 day.
 - The SmartOne will detect low battery conditions while at least 100 more messages can still be transmitted.
- **Interval for Diagnostic Message** - The SmartOne can send a diagnostic message with information on the diagnostic status of the device.
 - To turn this feature on, select the Enabled checkbox.
 - The diagnostic message includes battery status, GPS average search time, GPS fails and number of transmissions since last diagnostic message.
 - Transmit interval of diagnostic messages with a transmission rate from 1 to 45 days. The default is 30 days.
- **SmartOne Solar Only** - This section is applicable to configuring SmartOne Solar devices only; refer to the SmartOne Solar User Manual for details.

CONTINUOUS GPS MODE

CHANGE LOCATION TAB

Continuous GPS Mode improves the reliability of the SmartOne C's GPS location by achieving a GPS accuracy of $\leq 60\text{ft}$ 2DRMS. When Continuous GPS Mode is enabled, the SmartOne C's GPS will remain always on and active.

NOTE: Using Continuous GPS Mode requires the SmartOne C to be line powered. **Failure to use line power will fully drain the batteries within 2-3 days.**

Contact your Globalstar Sales Representative for additional guidance in using this feature and how to purchase the SmartOne C Line Power Cable.

ENABLING CONTINUOUS GPS MODE

Perform the following steps to enable Continuous GPS Mode:

- On the Menu Bar, select Tools > Continuous GPS Configuration and the Unlock Continuous GPS dialog will be displayed.
- Enter the Unlock Code and select the OK button.



NOTE: Contact your Globalstar Sales Representative for the Unlock Code.

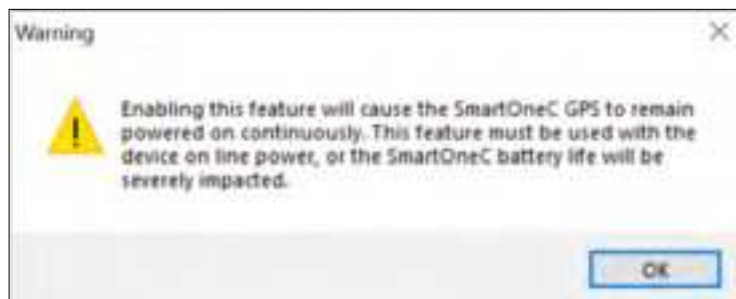
- An Activation Success message will be displayed. Select the OK button.



- A **SmartOne C Only** section will display on all Options tabs as illustrated below:



- To enable Continuous GPS Mode, Select the **Enabled** box.
- A Warning message will be displayed as shown below. Read and understand the warning, ensure the SmartOne C is line powered, and select the **OK** button.



- The Enabled checkbox will be checked and Continuous GPS Mode will be enabled when the SmartOne C is programmed.

Getting Started | Location Messages | Input Settings | **Options**

Device Turned On Message: Always Enabled

Interval for Replace Battery Message: ☒ Enabled Days: 1 Hours: 0 Mins: 0

Interval for Diagnostic Message: ☒ Enabled Days: 30 Hours: 0 Mins: 0

SmartOne Solar Only

Pin T Power: ☐ Enabled

Beaconing Mode: ☐ Enabled

Bluetooth Sensor: ☐ Enabled

Strong ID: ☐ Enabled

Strong ID Verification with EEM: ☐ Enabled

Development Sensor Key: ☐ Enabled

SmartOne C Only

Continuous GPS Mode: ☒ Enabled

Beaconing + BLE Sensor

Beaconing Interval: 60 Sec

MESSAGES

The SmartOne produces on-air messages conforming to the Globalstar proprietary format. See Appendix G through J for detailed examples of various message decoding. The data being communicated to the end user is contained entirely in the 72 bit (9 byte) field. This section will describe the use of the 9 byte user information segment for communicating the range of information that the SmartOne is able to convey to the user.

NOTE: User information is also referred to as the Message Payload.

GLOBAL MESSAGE TYPE

Bits 0 and 1 in the first byte of the user data define the Global Message Type; there are four total global types. Types 0 and 3 are applicable to the function and features of the SmartOne, type 1 and 2 are user defined message types.

- **Type 0** - Standard Message: All of the various message types that contain Latitude and Longitude data that are transmitted by the SmartOne will be of this type.
- **Type 1** - Truncated Message: This message type provides for up to 2 bytes plus 6 bits of user data to be appended to the status byte and GPS location information.
- **Type 2** - Raw Message: This message type provides for up to 8 bytes plus 6 bits of user data.
- **Type 3** - Non Standard Message: This is the message type that covers the category “none of the above”. The SmartOne will use this message type for messages that do not contain Latitude and Longitude data. Smart One message types which fall into this category include Accumulate/Count messages, Diagnostic messages, Contact Service Provider messages and Low Battery messages.

TYPE 0 MESSAGE CLASS

The below table displays the format of all standard messages. Specific variants of the message will be shown individually in the following subsections.

BYTE #	VARIABLE	BITS	DESCRIPTION
0	TYPE FIELD	2	Bit (1:0) = 0 = message type:
0	BATTERY STATE	1	Bit (2) 0 = Good battery. 1 = Replace battery.
0	GPS DATA VALID	1	Bit (3) 0 = GPS Data valid in this message. 1 = GPS failed in this message cycle, ignore Latitude and Longitude fields.
0	MISSED INPUT STATE CHANGE	2	Bit (4) Missed Input 1. A value of 1 in this bit means that an input state change of Input 1 was missed due to the transmission of a higher priority message. Bit (5) = Missed Input 2. A value of 1 in this bit means that an input state change of Input 2 was missed due to the transmission of a higher priority message.
0	GPS FAIL COUNTER	2	Bit (7:6) = GPS fail counter. Counts up to a maximum value of 3 upon GPS failure.
1,2,3,4,5,6	LATITUDE/LONGITUDE	48	Byte 1 = Latitude MSByte Byte 2 = Latitude Byte 3 = Latitude LSByte Byte 4 = Longitude MSByte Byte 5 = Longitude Byte 6 = Longitude LSByte

			360 degrees of Longitude coded in signed binary with 3 bytes and 180 degrees of Latitude coded in signed binary with 3 bytes. Positive Longitudes correspond to East Longitudes Positive Latitudes correspond to North Latitudes See Appendix G for an Lat/Long decoding example
7	INPUT STATUS	4	These bits reflect the state of the Inputs and indicate which one, if any, triggered an Input Status Changed message. Bit 0: Input 1 change: 0 = Did not trigger message, 1 = Triggered message. Bit 1: Input 1 state: 0 = Closed, 1 = Open Bit 2: Input 2 change: 0 = Did not trigger message, 1 = Triggered message Bit 3: Input 2 state: 0 = Closed, 1 = Open
7	MESSAGE SUB-TYPE	4	Bits (7:4) message sub-type code. See subtypes below: Value is 0 in the location message. Value is 1 in the Device Turned On message. Value is 2 in the Change of Location Area alert message. Value is 3 in the Input Status Changed message. Value is 4 in the Undesired Input State message. Value is 5 in the Re-Centering message.
8	RESERVED	3	Bits (2:0) RESERVED in SmartOne
8	VIBRATION TRIGGERED MESSAGE	1	Bit (3) – Value 1 = This message is being sent because Transmit on Change of Vibration State is selected and the vibration just changed state, or Undesired Vibration State is selected and the vibration is in the undesired state. Value 0 = This message is being transmitted for a reason other than the above reasons.
8	VIBRATION BIT.	1	Bit (4) – Value 1 = Unit is in a state of vibration. Value 0 = Unit is not in a state of vibration.
8	2D	1	Bit (5) – Value 1 = GPS data reported is from a 2D fix. (Only 3 satellites were used in the fix.) Value 0 = GPS data reported is from a 3D fix.
8	MOTION	1	Bit (6) – Value 1 = Device was In-Motion when the message was transmitted. Value 0 = Device was At Rest when the message was transmitted.
8	FIX CONFIDENCE BIT.	1	Bit (7) 0=High confidence in GPS fix accuracy, 1=Reduced confidence in GPS fix accuracy.

LOCATION MESSAGE

This is the message that is transmitted on an interval. When this message is received, it indicates that the transmission is due to a scheduled interval at either the At Rest rate or In Motion rate. Whether the device is At Rest or In Motion can be determined by the Motion bit (Byte 8 , bit 6).

The Location Message Subtype field of this message is contained in byte 7; bits 4-7 have a value of zero 0.

DEVICE TURNED ON MESSAGE

This is the message transmitted at power on.

The Standard Message Subtype field of this message, contained in byte 7; bits 4-7, has a value of 1.

CHANGE OF LOCATION AREA ALERT MESSAGE

This is the message transmitted when the SmartOne detects that it has left its Change of Location Area.

The Standard Message Subtype field of this message, contained in byte 7; bits 4-7, has a value of 2.

INPUT STATUS CHANGED MESSAGE

This is the message that will be transmitted upon the change of state of the inputs if it is enabled and as selected by the user:

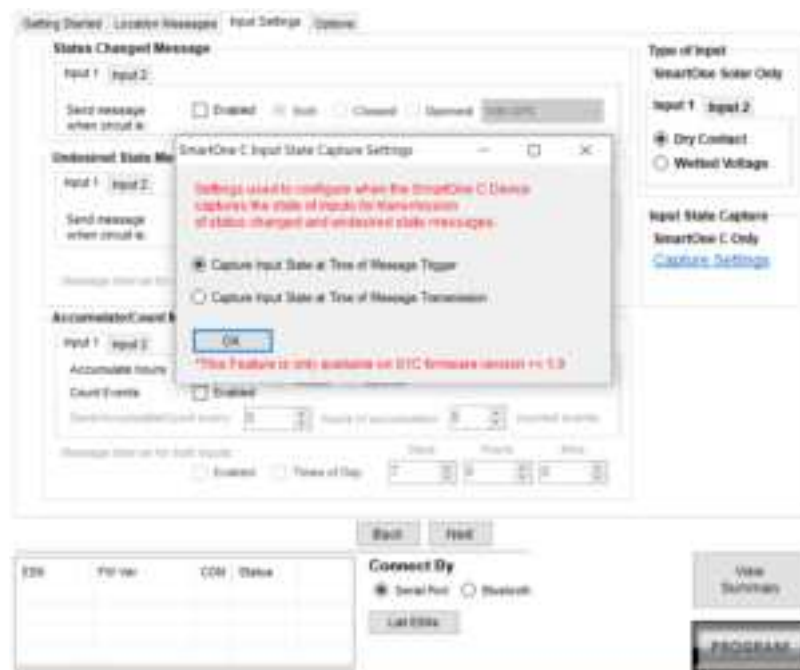
- Input 1 open, Input 1 closed, or Input 1 both(open or closed)
- Input 2 open, Input 2 closed, or Input 2 both(open or closed)

The Standard Message Subtype field of this message, contained in byte 7; bits 4-7, has a value of 3.

The Input Status Value of byte 7; bits 0-3 in the Standard message indicates the type of Input change (Input 1 or Input 2) that triggers the message and the status of inputs (open or closed).

The reporting of the inputs status may be configured in 2 different ways:

1. The status of inputs captured when the input state message is actually triggered.
 - This option will indicate the input states closed or open when message was triggered by the S1C.
2. The status of inputs captured while building the Standard Message and is ready to transmit.
 - This option will be helpful when Input Status Changed Message is configured with GPS.
 - This option will give flexibility to capture Missed Input State Change status while obtaining a GPS fix.
 - This option will give flexibility to capture status of Inputs after GPS fix is obtained since the GPS fix could take up to a maximum of 4 minutes.



UNDESIRE INPUT STATE MESSAGE

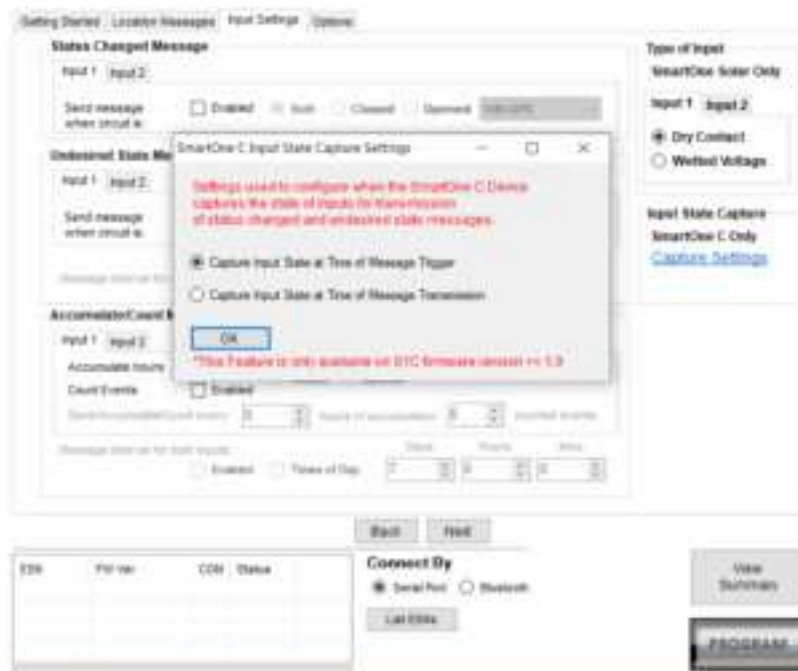
This is the message that is transmitted when the user has selected an undesired input state to cause a different report rate. When this Mode is enabled, the user defined Undesired Input State report rate supersedes the At Rest and In Motion report rates when the Input(s) is (are) in an undesired state.

The Standard Message Subtype field of this message, contained in byte 7; bits 4-7, has a value of 4.

The Input Status Value of byte 7; bits 0-3 in the Standard message indicates which Inputs (Input 1 or Input 2) are in an undesired state and trigger the Undesired Input State report rate along with indicating the status of inputs (open or closed).

The reporting of the inputs status may be configured in 2 different ways:

1. The status of inputs captured when the Undesired Input State message is triggered.
 - This option will indicate the input states closed or open when Undesired Input State message was triggered by the SIC.
2. The status of inputs captured while building the Standard Message and is ready to transmit.
 - This option will be helpful since Undesired Input State Message always needs a GPS fix preceding a transmission.
 - This option will give flexibility to capture Missed Undesired State Inputs Status while attaining GPS fix.
 - This option will give flexibility to capture status of Inputs after GPS fix is obtained since the GPS fix could take up to a maximum of 4 minutes.



RE-CENTER MESSAGE

The Re-Center message is transmitted when Reduced Messaging Mode is selected and the SmartOne re-centers (automatically sets a new Change of Location Area).

The Standard Message Subtype field of this message, contained in byte 7; bits 4-7, has a value of 5.

TYPE 1 MESSAGE CLASS

TRUNCATED MESSAGE TYPE – SINGLE PACKET

This message type provides for up to 2 bytes plus 6 bits of user data to be appended to the status byte and GPS location information. The input and status bits data of the standard message are replaced with user data from the configuration port. The Truncated message will follow the following on-air format:

VARIABLE	BITS	DESCRIPTION
STATUS BYTE	8	Bit (1:0) = 1 Truncated message type Bit (7:2) = submask data from Truncated user data
LATITUDE/LONGITUDE	48	Byte 1 = Latitude MSByte Byte 2 = Latitude Byte 3 = Latitude LSByte Byte 4 = Longitude MSByte Byte 5 = Longitude Byte 6 = Longitude LSByte 360 degrees of longitude coded in signed binary with 3 bytes and 180 degrees of latitude coded in signed binary with 3 bytes Positive longitude corresponds to East longitudes Positive Latitude corresponds to North latitudes See Appendix G for an Lat/Long decoding example
USER DATA	16	Byte 1 = User data byte 1 Byte 2 = User data byte 2

TRUNCATED MESSAGE TYPE – MULTIPLE PACKET VERSION

The Globalstar Commercial IoT messaging protocol provides for single and multiple packet messaging. In the event that the user application requests a user data length exceeding 9 bytes, the SmartOne (running firmware version 2.1 or later) will automatically “packetize” the message, that is, transmit it as multiple 9 byte packets. The ground station appliqué will reverse the process, “de-packetizing” the message back into a single (“long”) message. From the user application point of view, this eliminates the 9 byte limitation allowing the user to compose longer messages transparently. They are presented to the user by the Globalstar back office as complete messages of a length longer than 9 bytes. The SmartOne supports user-defined messages (Class 1 and 2) of up to 54 bytes.

This message type provides for up to 47 bytes plus 6 bits of user data to be appended to the status byte and GPS location information. The input and status bits data of the standard message are replaced with user data from the configuration port. Note: Total message length will be a minimum of 9 bytes in length, and a maximum of 54 bytes in length, and the length sent to the user will always be divisible by 9. The Truncated message will follow the following on-air format:

VARIABLE	BITS	DESCRIPTION
STATUS BYTE	8	Bit (1:0) = 1 = Truncated message type Bit (7:2) = submask data from Truncated user data
LATITUDE/LONGITUDE	48	Byte1 = Latitude MSByte Byte 2 = Latitude Byte 3 = Latitude LSByte Byte 4 = Longitude MSByte Byte 5 = Longitude Byte 6 = Longitude LSByte 360 degrees of longitude coded in signed binary with 3 bytes and 180 degrees of latitude coded in signed binary with 3 bytes Positive longitude corresponds to East longitudes Positive Latitude corresponds to North latitudes See Appendix G for an Lat/Long decoding example
USER DATA	VARIABLE	Byte 1 = User data byte 1 Byte 2 = User data byte 2 Byte 3 = User data byte 3 Byte 47 = User data byte 47

TYPE 2 MESSAGE CLASS

RAW MESSAGE TYPE – SINGLE PACKET VERSION

Message type 2 shall be a Raw Payload message. This message type provides for up to 8 bytes plus 6 bits of user data. This mode is provided to enable the user to directly send a single data burst through the network. The only bits not accessible to the user are the message type bits needed by the receiving data processor to delineate message type associated to the transmit ID. User data less than the full payload will be zero padded as necessary.

The Raw Payload message will follow the following on-air format:

VARIABLE	BITS	DESCRIPTION
STATUS BYTE	8	Bit (1:0) = 2 = Raw message type Bit (7:2) = submask data from Raw Payload user data
USER DATA	VARIABLE	Byte 1 = User data byte 1 Byte 2 = User data byte 2 Byte 3 = User data byte 3 Byte 4 = User data byte 4 Byte 5 = User data byte 5 Byte 6 = User data byte 6 Byte 7 = User data byte 7 Byte 8 = User data byte 8

RAW MESSAGE TYPE – MULTIPLE PACKET VERSION

The Globalstar Commercial IoT messaging protocol provides for single and multiple packet messaging. In the event that the user application requests a user data length exceeding 9 bytes, the SmartOne (running firmware version 2.1 or later) will automatically “packetize” the message, that is, transmit it as multiple 9 byte packets. The ground station appliqué will reverse the process, “de-packetizing” the message back into a single (“long”) message. From the user application point of view, this eliminates the 9 byte limitation allowing the user to compose longer messages transparently. They are presented to the user by the Globalstar back office as complete messages of a length longer than 9 bytes. The SmartOne supports user-defined messages (Class 1 and 2) of up to 54 bytes.

Message type 2 shall be a Raw Payload message. This message type provides for up to 53 bytes plus 6 bits of user data. This mode is provided to enable the user to directly send a single data burst through the network. The only bits not accessible to the user are the message type bits needed by the receiving data processor to delineate message type associated to the transmit ID. User data less than the full payload will be zero padded as necessary.

NOTE: Total message length will be a minimum of 9 bytes in length, and a maximum of 54 bytes in length, and the length sent to the user will always be divisible by 9

The Raw Payload message will follow the following on-air format:

VARIABLE	BITS	DESCRIPTION
STATUS BYTE	8	Bit (1:0) = 2 = Raw message type Bit (7:2) = submask data from Raw Payload user data
USER DATA	VARIABLE	Byte 1 = User data byte 1 Byte 2 = User data byte 2 Byte 3 = User data byte 3 Byte 53 = User data byte 53

TYPE 3 MESSAGE CLASS

The SmartOne will use the Type 3 message class for the following message types:

- Diagnostic Message – Subtype 21.
- Replace Battery Message – Subtype 22.
- Contact Service Provider Message – Subtype 23.

DIAGNOSTIC MESSAGE

The Diagnostic Message includes battery status, GPS average acquisition time, GPS fails and number of transmissions since the last Diagnostic Message.

Appendix I has an example of a decoded Diagnostic Message.

The format and fields of the SmartOne Diagnostic Message is shown in table 8 below.

BYTE #	VARIABLE	BITS	DESCRIPTION
0	TYPE FIELD	2	Bit (1:0) = 3 Non Standard message type:
0	SUBTYPE	6	Bit (7:2) = 21 for Diagnostic Message. Bit (7:2) = 22 for Replace Battery Message. Bit (7:2) = 23 Contact Service Provider Message..
1	NUMBER OF TRANSMISSIONS PER BURST.	4	Bits(3:0) = Number of Transmissions (1 to 15 Transmissions)
1	BATTERY CONDITION	1	Bit 4: 0 = Good battery. 1 = Replace Battery
1	GPS SUBSYSTEM FAULT	1	Bit 5: 0 = GPS system OK. 1 = Fault
1	TRANSMITTER SUBSYSTEM FAULT	1	Bit 6: 0 = Transmitter OK. 1 = Fault.
1	SCHEDULER SUBSYSTEM FAULT	1	Bit 7: 0 = OK. 1 = Fault
2	MIN INTERVAL	8	Minimum Interval between transmission attempts (5 second resolution) Default is 300 seconds
3	MAX INTERVAL	8	Maximum Interval between transmission attempts. Default is 600 seconds
4	GPS MEAN SEARCH TIME	8	Unsigned binary count in seconds for mean GPS search to acquire
5,6	# GPS FAILS	16	Unsigned binary count of failed GPS attempts since last Diagnostic Message
7,8	# TRANSMISSIONS	16	# of transmissions since last Diagnostic message

REPLACE BATTERY MESSAGE

The Replace Battery message has a format almost identical to the Diagnostic message. If enabled by the user, the Replace Battery message will be sent by the SmartOne when the battery charge level is at or below the replace battery advisement level. The message will be repeated at an interval configurable by the user for as long as the battery remains below the advisement level. The default configuration is for the Replace Battery message to be enabled and to be transmitted once per day when the battery is low.

CONTACT SERVICE PROVIDER MESSAGE

The SmartOne will send a Contact Service Provider message when an internal fault is detected. The SmartOne will send one such message upon the detection of an internal fault. It will then attempt to continue to operate normally. The SmartOne will not send another Contact Service Provider message unless the fault is determined to have cleared, and then determined to have come back again.

ACCUMULATE/COUNT MESSAGE

The Accumulate/Count message is used to report the accumulation of time that an input is in a specified state as defined by the user, the accumulation of time that the device is in a State of Vibration, and/or the total transitions of the Inputs, as configured by the user. The message is transmitted either at a pre-set interval, at a point where any of the accumulation or count registers reach multiples as programmed by the user, just before rollover of any count/accumulate register, or all of the above. Appendix J has an example of a decoded Accumulate/Count message.

BYTE #	VARIABLE	BITS	DESCRIPTION
0	TYPE FIELD	2	Bit (1:0) = 3 Non Standard message type:
0	SUBTYPE	6	Bit (7:2) = 24 Accumulate/Count message..
1, 2	ACCUMULATED INPUT 1	16	Accumulated time that Input 1 has been in its undesired state with a resolution of 10 minutes. For example: 1 hour would be represented as a value of 6, 2 hours as a value of 12, etc. This resolution results in a rollover rate of a total time accumulation of approximately 1.25 years. (OxFFFF means that Input 1 Accumulate has been turned off)
3, 4	ACCUMULATED INPUT 2	16	Accumulated time that Input 2 has been in its undesired state with a resolution of 10 minutes. For example: 1 hour would be represented as a value of 6, 2 hours as a value of 12, etc. This resolution results in a rollover rate of a total time accumulation of approximately 1.25 years. (OxFFFF means that Input 2 Accumulate has been turned off)
5, 6	ACCUMULATED VIBRATION	16	Accumulated time that the SmartOne has been in a State of Vibration with a resolution of 10 minutes. For example: 1 hour would be represented as a value of 6, 2 hours as a value of 12, etc. This resolution results in a rollover rate of a total time accumulation of approximately 1.25 years. (OxFFFF means that Accumulated Vibration has been turned off)
7	INPUT 1 COUNT	8	The total number of openings or closings of input 1 as selected by the user. (OxFF means that Input 1 Accumulate has been turned off)
8	INPUT 2 COUNT	8	The total number of openings or closings of input 2 as selected by the user. (OxFF means that Input 2 Accumulate has been turned off)

MESSAGING PRIORITY

PRIORITIZATION OF PERIODIC STANDARD MESSAGE REPORT RATES

The SmartOne supports several rates at which it will send a Periodic standard message. Periodic versus Scheduled standard message rates are mutually exclusive. This is the priority of the different rates at which the SmartOne will send a standard message (Highest is listed first):

- Rate specified by Undesired Input State.
- Rate specified for when the SmartOne is inside its Change of Location Area.
- Rate specified for when device is In Motion. (Note, when inside the Change of Location Area, this rate affects sampling, but not reporting, as indicated by a higher priority for inside Change of Location Area.)
- Rate specified for when the device is At Rest.

MESSAGE PRIORITIES

It is possible that message types may collide. Whenever feasible, the SmartOne will examine its known schedule and reschedule lower priority messages to occur after higher priority ones. If there is not enough time in the known schedule for all scheduled messages to be transmitted in a reasonable time, or there is insufficient memory to queue them, the lowest priority message(s) could be dropped. In any case, unscheduled messages (for example, Input Status Changed) shall cancel pending messages of lower priority and not cancel pending messages of higher priority. The following list shows the priority of message types, with the highest priority being listed first.

- Contact Service Provider
- User Defined Raw message*
- User Defined Truncated message*
- Change of Location Area
- Replace Battery
- Undesired Input State
- Re-Center
- Diagnostics
- Accumulate/Count
- Input Status Changed
- Device Turned On
- Normal Location (In-Motion or At-Rest).

***NOTE:** The two user defined message types actually have equal priority. Either one will cancel the other one. If, for example, the user interface commands the device to send a Truncated message, and then, before it has time to obtain a fix and send the message, the user commands a Raw message, the Raw message will be sent.

SERIAL COMMANDS

The SmartOne uses the multi-functional user interface for unit configuration as well as interface to remote passive and smart sensors. Two commands are provided in the unit interface to support smart sensors. External sensors that can format and communicate to the SmartOne can send user data through the SmartOne by using these two commands. The rate is specified by the Undesired Input State message interval.

This section describes the serial interface between the SmartOne and a computer or other programming device. SmartOne will respond to any invalid command with a NAK response (payload field set to 0xFF).

SERIAL PACKET FORMAT (COMMANDS AND RESPONSES)

Communication to the SmartOne will follow the following specific format:

PREAMBLE	LENGTH	CMD	DATA	CRC
1 BYTE	1 BYTE	1 BYTE	Variable length 0 – 54 bytes	2 bytes

Total length range permitted: 5 bytes (Data field length 0) to 59 bytes (Data field length 54).

SERIAL PACKET FIELDS

The different fields are defined as:

PREAMBLE	FIXED PATTERN 0XAA
LENGTH	Total number of bytes in the serial packet including the preamble
CMD	Command type (See table below). Responses to commands carry the same command type as the command that initiated the answer
DATA	Data associated with the command or answer
CRC LOW	Least significant byte of the 16-bit CRC
CRC HIGH	Most significant byte of the 16-bit CRC

CRC ALGORITHM

The Security Field is a 16-bit CRC of all of the previous fields including the preamble, length, and command bytes. The remainder is initialized to all 1's (0xFFFF) and the CRC is inverted before being sent. Following is a sample C routine that implements the algorithm using the reversed technique:

```
WORD crc16_lsb(BYTE *pData, WORD length)
{
    BYTE i;
    WORD data, crc;
    crc = 0xFFFF;
    if (length == 0)
        return 0;

    do
    {
        data = (WORD)0x00FF & *pData++;
        crc = crc ^ data;
        for (i = 8; i > 0; i--)
        {
            if (crc & 0x0001)
                crc = (crc >> 1) ^ 0x8408;
            else
                crc >>= 1;
        }
    } while (--length);

    crc = ~crc;
    return (crc);
}
```

As an example, for a type (0x01) “Get ID” message made up of the following bytes: **AA 05 01**

The following 2 byte CRC would be calculated: **D5 50**

The complete message sent by the host to the SmartOne is: **AA 05 01 50 D5**

SERIAL PACKET TYPES

CMD	DESCRIPTION/USAGE/	COMMAND DATA BYTES	ACKNOWLEDGE DATA BYTES
0X01	User requests the SmartOne to reply with integral ESN (Electronic Serial Number). This is the ID used by Globalstar to identify the unit	NONE	Four data bytes, which contain the unit ID as an unsigned integer. The MSByte is sent first. Only the 27 LSbits are non-zero
0X26	SEND TRUNCATED MESSAGE	See Truncated Message section below	None
0X27	SEND RAW MESSAGE	See Raw Message section below	None

SEND TRUNCATED MESSAGE (SERIAL MESSAGE TYPE 0X26)

The SmartOne will perform a GPS location and append user data passed to the unit via the Truncated Message command 0x26.

47 bytes plus 6 bits of user data may be sent with the standard GPS location information in a messaging burst. Two bits are set in the on-air message by the SmartOne informing the recipient that the message is the Truncated type. The following table defines the message structure of the “data” portion of the command used to send a Truncated message.

Communication to the SmartOne will follow the following specific format:

BYTE	BIT	PARAMETER	DESCRIPTION	DEFAULT VALUE
0	7.2	SUBMASK BITS	User data bits. Bits 1:0 are reserved and will be masked by SmartOne	0X00
VARIABLE		USER DATA	Supports a maximum of 47 total bytes in this field. User application (smart sensor) should transmit only as many bytes as needed (don't pad the message) in order to keep on air packets to a minimum	

Example 1 - Sending a “Truncated” User Message

The host sends:

AA 08 26 10 22 33 <CRC-low> <CRC-High>

The SmartOne would respond:

AA 05 26 <CRC-Low> <CRC-High>

What would go out over the air is:

11 Lat-3 Lat-2 Lat-1 Lon-3 Lon-2 Lon-1 22 33

NOTE: The least two significant bits of the first byte are always “01” for a truncated message, the remaining 6 bits make up the top 6 bits of the first byte sent in the serial command, in this example 000100xx (with the “xx” representing the two bits that the SmartOne forces to “01”).

The 22 and the 33 that the user sent are appended after the 6 bytes of latitude and longitude.

Example 2 - Using a Longer Message

The host sends:

AA 0D 26 10 22 33 44 55 66 77 88 <CRC-low> <CRC-High>

NOTE: The length field: 0D – 0D is the number 13 in hexadecimal, the length of the total serial command.

The SmartOne would respond:

AA 05 26 <CRC-Low> <CRC-High>

What would go out over the air is:

11 Lat-3 Lat-2 Lat-1 Lon-3 Lon-2 Lon-1 22 33 44 55 66 77 88 00 00 00 00

NOTE: All on air messages are padded to a multiple of 9 bytes. This is the reason for the trailing zeros in this example.

SEND RAW MESSAGE (SERIAL MESSAGE TYPE 0X27)

The SmartOne will send raw user data using the Raw Payload command 0x27.

53 bytes plus 6 bits of user data may be sent. Two bits are set in the on-air message by the SmartOne informing the recipient that the message is Raw.

The following table defines the message structure used to send a Raw message.

BYTE	BIT	PARAMETER	DESCRIPTION	DEFAULT VALUE
0	7.2	SUBMASK BITS	User data bits. Bits 1:0 are reserved and will be masked by SmartOne	0X00
VARIABLE		USER DATA	Any user data Supports a maximum of 53 total bytes in this field. User application (smart sensor) should transmit only as many bytes as needed (don't pad the message) in order to keep on air packets to a minimum	

Example 1 - Sending a Raw User Message:

The Host sends:

AA 0E 27 10 22 33 44 55 66 77 88 99 <CRC-low> <CRC-high>

The SmartOne Responds:

AA 05 27 <CRC-low> <CRC-high>

What actually goes out over the air is:

12 22 33 44 55 66 77 88 99

NOTE: The least two significant bits of the first byte are always “10” for a raw message (a HEX or decimal value of “2”, the remaining 6 bits make up the top 6 bits of the first byte sent in the serial command, in this example 000100xx (with the “xx” representing the two bits that the SmartOne forces to “10”).

Example 2 - Using a Longer Message:

The Host sends:

AA 21 27 10 22 33 44 55 66 77 88 99 AA BB CC DD EE FF 11 22 33 44 55 66 77 88 99 AA 44 56 78 <CRC-low> <CRC-high>

NOTE: The length field, the command contains a total of 33 bytes. The length is 21 Hexadecimal, which is equal to 33 decimal.

The SmartOne Responds:

AA 05 27 <CRC-low> <CRC-high>

What actually goes out over the air is:

12 22 33 44 55 66 77 88 99 AA BB CC DD EE FF 11 22 33 44 55 66 77 88 99 AA 44 56 78 00 00 00 00 00 00 00

NOTE: All on air messages are padded to a multiple of 9 bytes. This is the reason for the trailing zeros in this example.

A simple ACK or NAK from the SmartOne Device to the host (smart sensor):

ACKs.

AA 05 26 <crc crc> (for the Truncated message)

AA 05 27 <crc crc> (for the Raw message)

NAK:

AA 05 FF <crc crc> (NAK).

NOTE: As the SmartOne operates, some debugging traces come out of the serial port. Those traces should simply be ignored. Once the handshake line is pulled low, the unit is in “command mode” and debugging traces will stop.

NOTE: User commands will ALWAYS be responded to immediately with either an acknowledgement or a NAK (as shown in the examples above). Once an acknowledgement (or NAK) is received, the host should simply ignore the serial port until the next time it sends a command.

NOTE: The most common reasons for a NAK are incorrect CRC, incorrect length field, or incorrect command field (i.e. not 0x26 or 0x27 for truncated and raw respectively).

THE HANDSHAKE LINE

The handshake line should be pulled low before sending each serial message. The recommended use of the handshake line is:

1. Pull handshake low.
2. Wait 2-3 milliseconds.
3. Send command
4. Receive response.
5. Raise handshake high.

CONNECTING SERIAL DEVICES TO THE SMARTONE

The SmartOne accepts a serial connection at 3 volt levels (Max), at 9600 baud. The relevant pins are TX, RX, Handshake and ground. The SmartOne can connect with devices that contain an asynchronous UART at 3 volt levels. (High State: 2.7-3 Volts, Low State: 0 Volts. Please contact Globalstar Support for more information).

CAUTION: NEVER attempt to connect the SmartOne directly to the pins on a computer's RS232 or USB port. The voltages in RS232/USB are too high and can damage the SmartOne.

Any deviations from the above guidelines will violate all RMA requirements and prevent any no-cost replacement.

NOTE: See Appendix K for information on the External Input Cables for the SmartOne.

APPENDIX A - GLOSSARY OF TERMS

A

Accelerometer – A sensor used for detecting and measuring vibration.

Accumulate Hours – The activity time accumulated in the Inputs of the device while the Input is in the user defined state.

Activation – The activation of an ESN (electronic serial number) on the Globalstar satellite network. The process consists of programming a start and an end date for the use of the ESN and the payment of certain fees to Globalstar. Sometimes referred to as “provisioning.”

At Rest – A tracker is considered to be at rest when the comparison of a new GPS reading to a previous GPS reading indicates that the tracker has not changed location by more than a specified minimum distance. The specified minimum time and the specified minimum distance are both configuration parameters.

C

Configuration – The collection of variables that control the operating performance of a device.

Configure (configuring) – Programming (setting) the variables that control the operation performance of a tracker.

Count Events – The accumulated number of state changes in the Inputs of the device.

D

Delay To Start – Specific delay in time following the programming of the device to commence operation.

Desired State – The state of the Input in normal condition defined by the user.

E

ESN – Electronic Serial Number is a unique number assigned to each SmartOne device. The ESN is used by the Globalstar Satellite Network to identify messages from the devices in the field.

F

Failed GPS reading – A GPS reading could not be processed from available GPS satellite signals.

FW Ver – Firmware version is the existing software loaded in the device main processor

G

GPS – The GPS (Global Positioning System) is a "constellation" of 24 well-spaced satellites that orbit the Earth and make it possible for people with ground receivers to pinpoint their geographic location.

GPS reading – The longitude, latitude, time, and date information obtained from processing the signals from the GPS satellites.

I

In Motion – The unit is considered to be In Motion when there is a State of Vibration – and – when a comparison of a new GPS reading to a previous GPS reading indicates the device has changed location by at least a specified minimum distance (100 meters by default).

Inaccurate GPS reading – The longitude and latitude information obtained from processing the signals from the GPS satellites when a tracker cannot observe an adequate number of satellites; the GPS signals were jammed by electronic interference; the GPS signals were reflected from objects creating multi-path conditions; or weather conditions distorted the GPS signals. An inaccurate GPS reading may have longitude and latitude errors of a mile or more.

Input – A digital channel in the device that allows the detection of switch stage changes. The inputs are dry contact inputs, ON/OFF.

M

Message – A collection of information that is transmitted in a group over the satellite network.

Message Interval – The amount of time specified by the user between Location Messages. The SmartOne transmits a Location Message once the Message Interval has elapsed. The internal clock on the device is reset to the interval time after each transmission. The SmartOne is in low power consumption Mode during the interval to preserve battery life.

Message Time(s) of Day – The specific time of day in military format for the SmartOne to transmit Location Messages. The SmartOne is in low power consumption Mode between the specific times of day to preserve battery life.

Message Transmission – The process of sending a message over the satellite network. The process includes sending a message multiple times to improve the transmission success rate.

N

Number of message repeats – The number of times a message is sent in a message transmission with the same Unique Message Number(UMN). The number of message repeats is configurable during the tracker set up process. Globalstar only counts repeated messages as one message if it is received three times or less. If the same message is received more than three times, Globalstar may count the message as more than one message for billing purposes

S

Self Test – An internal unit test that is performed by the processor, checking for the proper operation of functions.

State of Lacking Vibration – The motion sensor is indicating a cease of vibration when the number of vibration pulses per minute is lower than the Level of Sensitivity for Vibration Sensor number for the time required to determine if a State of Vibration has ceased.

SOLV – State of leaving vibration.

SOV – State of vibration.

T

Time to be in a State of Lacking Vibration – a configurable parameter that sets the period of time vibration has to be absent to determine if a State of Vibration has ceased.

Time to be in a State of Vibration – a configurable parameter that sets the period of time used to determine if a State of Vibration exists.

U

Undesired State Message – The SmartOne sends this message at a user defined interval while any of its Inputs are in the undesired state selected by the user, either closed or opened.

APPENDIX B - TECHNICAL SUPPORT

We suggest VARs reference our online content at our Globalstar VAR Support Website <http://var.globalstar.com/> prior to contacting our VAR Support. The content located there should address most activation/provisioning inquiries and minor frequently asked questions concerning business account management functions. Please create an account by accessing this site and clicking below the Login button where it states: [Sign Up for Access Here](#)

For all other support issues, please contact Globalstar, Inc. at our corporate headquarters:

Email: varsupport@globalstar.com.

Phone: +1 (985) 335-1590

APPENDIX C - RF RADIATION EXPOSURE STATEMENT

This equipment complies with radiation exposure limits set forth for an uncontrolled environment. End users must follow the specific operating instructions for satisfying RF exposure compliance. The antenna(s) used for this transmitter must be installed to provide a separation distance of at least 20 cm from all persons and must not be co-located or operating in conjunction with any other antenna or transmitter. NOTE: The SmartOne C antenna is located under the embossed label that states "This side towards sky".

RAPPORT D'EXPOSITION DE RAYONNEMENT DE LA FCC RF: Cet appareil est conforme aux limites d'exposition de rayonnement de la RF déterminées pour un environnement non contrôlé. Les utilisateurs doivent suivre les instructions d'opération pour respecter ces limites d'exposition. Les antennes de cet émetteur doivent être installées à une distance d'au moins 20cm du corps humain et ne doivent point être placées au même endroit ni mises en fonctionnement en commun avec d'autres antennes ou émetteurs. NOTE : L'antenne SmartOne C est située sous l'étiquette gaufrée, "This side towards sky".

APPENDIX D - REGULATORY NOTICES

FCC/IC NOTICES

This device complies with Part 15 of the FCC Rules. Operation is subject to the following two conditions:

(1) this device may not cause harmful interference, and (2) this device must accept any interference received, including interference that may cause undesired operation.

Modifications: Any modifications made to this device that are not approved by Globalstar, Inc. may void the authority granted to the user by the FCC to operate this equipment.

NOTE: This equipment has been tested and found to comply with the limits for a Class A digital device, pursuant to part 15 of the FCC Rules. These limits are designed to provide reasonable protection against [harmful interference](#) in a residential installation. This equipment generates, uses and can radiate [radio frequency energy](#) and, if not installed and used in accordance with the instructions, may cause [harmful interference](#) to radio communications. However, there is no guarantee that interference will not occur in a particular installation. If this equipment does cause harmful interference to radio or television reception, which can be determined by turning the equipment off and on, the user is encouraged to try to correct the interference by one or more of the following measures:

- Reorient or relocate the receiving antenna.
- Increase the separation between the equipment and receiver.
- Connect the equipment into an outlet on a circuit different from that to which the receiver is connected.
- Consult the dealer or an experienced radio/TV technician for help.

This device complies with Industry Canada's license-exempt RSSs. Operation is subject to the following two conditions:

(1) This device may not cause interference; and (2) This device must accept any interference, including interference that may cause undesired operation of the device.

CAN ICES-3 (A)/NMB-3(A) – This Class A Digital Apparatus Complies with Canadian ICES-003.

This device complies with the requirements for Radio Astronomy Site avoidance as specified by the Globalstar National Science Foundation agreement of 2001. It is compliant with CFR25.213

This device automatically adjusts its transmission frequency according to its location and is compliant with international regulatory requirements.

AVIS DE LA FCC/IC

Cet équipement a été testé et respecte les limitations d'un dispositif numérique de Classe A, conformément à la Partie 15 du Règlement FCC. Ces limitations sont conçues afin de fournir une protection raisonnable contre les interférences nuisibles lorsque l'équipement est utilisé dans un environnement commercial. Cet équipement génère, utilise et peut émettre rayonnement de fréquence radio, et s'il n'est pas installé et utilisé en conformité avec le manuel d'instructions, il peut causer des interférences nuisibles aux communications radio. L'utilisation de cet équipement dans une zone résidentielle est susceptible de causer des interférences nuisibles, auquel cas l'utilisateur sera tenu de corriger les interférences à ses frais.

Modifications: Toutes modifications apportées à ce dispositif qui n'ont pas été approuvées par Globalstar, Inc., peut annuler le droit accordé à l'utilisateur par la FCC d'opérer cet équipement.

Le présent appareil est conforme aux CNR d'Industrie Canada applicables aux appareils radio exempts de licence. L'exploitation est autorisée aux deux conditions suivantes :

(1) l'appareil ne doit pas produire de brouillage, et (2) l'utilisateur de l'appareil doit accepter tout brouillage radioélectrique subi, même si le brouillage est susceptible d'en compromettre le fonctionnement.

Cet Appareil numérique de la classe (A) est conforme à la norme NMB-003 du Canada.

Ce dispositif est conforme aux exigences relatives à l'évitement des Sites de Radioastronomie tel que spécifié par l'accord de la Fondation Nationale Scientifique Globalstar de 2001. Il est conforme avec le Règlement CFR 25.213.

Ce dispositif ajuste automatiquement sa fréquence de transmission en fonction de sa position et est conforme avec les exigences réglementaires internationales.

CE NOTICES

DECLARATION OF CONFORMITY FOR EUROPEAN CUSTOMERS

Hereby, Globalstar declares that this SmartOne C is in compliance with the essential requirements and other relevant provisions of Directive 2014/53/EU. The declaration of conformity may be consulted at www.Globalstar.com/Regulatory.

SmartOne C Transmit Frequencies: 1611.25 Mhz - 1618.75 Mhz (4 Channels)









SmartOne C Max Power Out: 23.46 dBm EIRP

The SmartOne C has been so constructed that the product complies with the requirement of Article 10(2) as it can be operated in at least one Member State as examined and the product is compliant with Article 10(10) as it has no restrictions on being put into service in all of the EU except Ireland. The SmartOne C cannot be marketed in Ireland.



IE. Not to be Marketed in the Republic of Ireland

APPENDIX E – GENERAL WARNINGS

-  **Warning - Modifications:** Changes or modifications not expressly approved by the party responsible for compliance could void the user's authority to operate the equipment.
-  **Warning - Replaceable Batteries - Caution:** Risk of explosion of battery if replaced by an incorrect type. Dispose of used batteries according to the manufacturer's instructions.
-  **Warning – Blasting Area:** To avoid interference with blasting operations, turn your SmartOne C off when in a “Blasting Area” or in areas posted “Turn off two-way radio.” Obey all signs and instructions.
-  **Warning – Potential Explosive Atmosphere:** Turn off the SmartOne C when in any area with a potentially explosive atmosphere and obey all signs and instructions.
-  **Warning – Driving:** Always follow safe driving practices and local rules and regulations regarding the use of wireless devices while driving. Always park safely prior to using the SmartOne C.
-  **Warning - Installation and Service:** Allow only authorized personnel to install or service the SmartOne C and accessories. Faulty installation or service can be dangerous and can invalidate the warranty.
-  **Warning – External Power:** When connecting external power to the SmartOne C, make sure that the supply voltage to the unit is at the rated voltage(See Appendix K). If the supply voltage to the SmartOne C is not at the rated voltage, the unit may not operate correctly and damage to the unit may occur. Also, it will void the warranty if an invalid voltage is supplied via external input and the SmartOne C is damaged.
-  **Warning – Tightening Cover Screws:** Upon replacing the Battery Compartment Cover or the Configuration Cable Cover, tighten the screws according to specification; otherwise the unit may no longer retain its water-tight capability.

APPENDIX F – SPECIFICATIONS & STANDARDS

SPECIFICATIONS	
DIMENSIONS	2.7" (h) x 3.25" (w) x 1" (d)
	6.86 cm (h) x 8.26 cm (w) x 2.53 cm (d)
WEIGHT	3.6 oz (with 4 batteries and mounting hardware)
	102g (with 4 batteries and mounting hardware)
TEMPERATURE	-22°F to +140°F (The unit shall remain operational over the -40°F to +185°F range - may experience battery life and RF signal degradation)
	-30°C to +60°C (The unit shall remain operational over the -40°C to +85°C range - may experience battery life and RF signal degradation)
LINE POWER	5 VDC or 8-22 VDC Regulator Cable
BATTERY TYPE	4 AAA 1.5V Lithium

STANDARDS		
WATERPROOF	IP67	Intrusion Protection
	IP68	Freeze – Thaw
	IP69K	High Pressure Washing
MIL STANDARDS	MIL-STD-810F	95% to 100% Condensing (Humidity)
	MIL-STD-810E	Method 509.3 – 5% NaCl, 95% Distilled Water (Salt Fog)
SAE	SAE J1455	Random 20 Hz to 2000 Hz, 0.40 g ² /hz, One hour per axis (Vibration)
		Thermal Shock Test

APPENDIX G – LATITUDE/LONGITUDE DECODING

Example Message = 0x002B5372BFF12F0A02

0x 00 2B 53 72 BF F1 2F 0A 02

Signed integer (MSB..LSB)			Lat2	Lat1	Lat0	Long2	Long1	Long0
---------------------------	--	--	------	------	------	-------	-------	-------

Calculating Latitude

Negative Latitude corresponds to Latitude in the SOUTHERN Hemisphere.
Positive Latitude corresponds to Latitude in the NORTHERN Hemisphere.

$\text{Degree_per_count_lat} = (90.0/2^{23})$

Hex Lat = 0X2B5372 ; Conversion to Decimal = 2,839,410

Latitude = Decimal Lat bytes * Degree_per_count_lat
 = 2,839,410 * (90.0/2²³)
 = 30.463564 degrees NORTH

Note: If greater than 90 degrees, 180 must be subtracted from result

Calculating Longitude

Negative Longitude corresponds to Longitude in the WESTERN Hemisphere.
Positive Longitude corresponds to Longitude in the EASTERN Hemisphere.

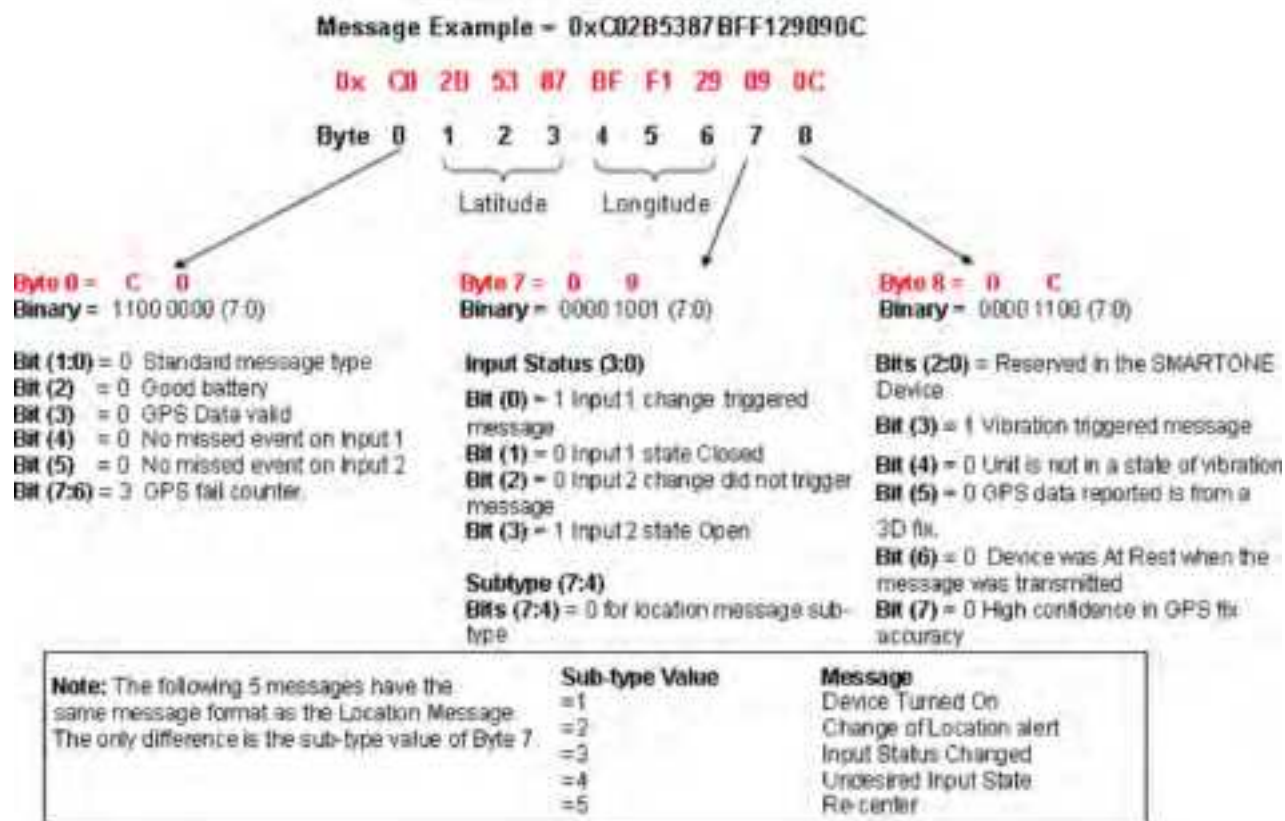
$\text{Degree_per_count_long} = (180.0/2^{23})$

Hex Long = 0XBFF12F ; Conversion to Decimal = 12,579,119

Longitude = Decimal Long bytes * Degree_per_count_long
 = 12,579,119 * (180.0/2²³)
 = 269.918611

Note: If greater than 180 degrees, 360 must be subtracted from result. Therefore, 269.918611 degrees - 360 degrees
 = -90.081388 degrees
 = 90.081388 degrees WEST

APPENDIX H – STANDARD MESSAGE DECODING



APPENDIX I - DIAGNOSTIC MESSAGE DECODING

Message Example = 0x 57033C784F00000009

0x 57 03 3C 78 4F 00 00 00 09
Byte 0 1 2 3 4 5 6 7 8

Byte 0 = 5 7

Binary = 0101 0111 (7:0)

Bits (1:0) = 3 Non Standard message-type

Bits (7:2) = 21 for Diagnostic Message

Byte 2 = 3 C

Decimal = 60

Minimum interval between
transmission attempts
(5 second resolution, 300)

Byte 4 = 4 F

Decimal = 79

Unsigned binary count in
seconds for mean GPS
search to acquire

Byte 1 = 0 3

Binary = 0000 0011 (7:0)

Bits(3:0) = 3 Number of Transmissions

Bit (4) = 0 Good battery

Bit (5) = 0 GPS system OK

Bit (6) = 0 Transmitter OK

Bit (7) = 0 Scheduler Subsystem OK

Byte 3 = 7 8

Decimal = 120

Maximum interval between
transmission attempts
(5 second resolution, 600)

Byte 5 & 6 = 00 00

Decimal = 0

Unsigned binary count of
failed GPS attempts since
last Diagnostic Message

Byte 7 & 8 = 00 09

Decimal = 9

of transmissions since last
Diagnostic message

Note: The following 2 messages have the same message format as the Diagnostic Message. The only difference is the value of Bits(7:2) of Byte 0

Bits (7:2) Value

Message

=22

Replace Battery

=23

Contact Service Provider

APPENDIX J - ACCUMULATE/COUNT MESSAGE DECODING

Message Example = 0x63FFFFFFFFFFFF7DFF

0x 63 FF FF FF FF FF FF 7D FF

Byte 0 1 2 3 4 5 6 7 8

Byte 0 = 6 3

Binary = 0110 0011 (7:0)

Bits (1:0) = 3 Non Standard message type

Bits (7:2) = 24 for Accumulate/Count Message

Byte 1 & 2 = FFFF

Accumulated time that Input 1 has been in its undesired state with a resolution of 10 minutes.

0xFFFF means that Input 1

Accumulate has been turned off

Byte 3 & 4 = FFFF

0xFFFF means that Input 2

Accumulate has been turned off

Byte 5 & 6 = FFFF

Accumulated time that the SMARTONE has been in a State of Vibration with a resolution of 10 minutes.

0xFFFF means that accumulate time of vibration been turned off

Byte 7 = 7D

Decimal = 125

The total number of openings or closings of Input 1

Byte 8 = FF

0xFF means that Input 2

Accumulate count has been turned off

APPENDIX K - EXTERNAL INPUT CABLES

INSTRUCTIONS AND WIRING DIAGRAM FOR SMARTONE C EXTERNAL INPUT CABLES

5v Cable (PN# 2030-0305-01)

&

22v Cable (PN# 2030-0307-01)

COLOR	FUNCTION
BROWN	Setup (Handshake from Serial Device)
RED	RX
ORANGE	TX (to Serial Device RX)
LIGHT BLUE	Dry Contact 2
WHITE	Dry Contact 1
YELLOW	Soft Power Down (Normally Open)
GREEN	Ground
BLUE	Ground
VIOLET	Line Power +

NOTES

1. When using the 5V external input cable (PN# 2030-0305-01), the supply voltage applied to the Line Power + wire must be 5.0 +/- 0.25 VDC. Applying a different voltage will either damage the SmartOne C or cause it to function improperly/shutdown.
2. When using the 8-22 VDC external input cable (PN# 2030-0307-01), the supply voltage applied to the Line Power + wire must be between 8.0 VDC and 22 VDC. If less than 8 VDC is applied, the regulator will not function properly. If more than 22 VDC is applied, there is a strong possibility that the regulator inside the cable will be damaged.
3. If directly connecting your source to Line Power +, the voltage must be 5.0 VDC.
4. This cable is designed to only work with 3.3 VDC logic. Do not use with 5 VDC logic devices.
5. Be certain that unused wires do not short to each other.
6. All ground wires are common; therefore, any ground can be used with any function.
7. Battery voltage is regulated differently internal to the SmartOne unit than Line Power voltage.

APPENDIX L – BATTERY LIFE ESTIMATE

Battery life is dependent on several factors:

- View of the sky
- How often the device is transmitting
- Requesting GPS fixes
- Temperature
- Sleep Current

The more often that the SmartOne transmits data, the shorter the battery life.

The below table is an example of clear sky transmissions

MSGs/DAY	ESTIMATED BATTERY LIFE (DAYS)
1	750 Days
2	500 Days
3	400 Days
6	200 Days
24	80 Days

