

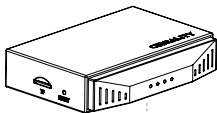


CREALITY BOX 2.0 User Manual

Shenzhen Creality Technology Co., Ltd



Parts list



CREALITY BOX 2.0 *1



Converter *1



USB line*2



Instruction manual*1



Certificate of approval *1



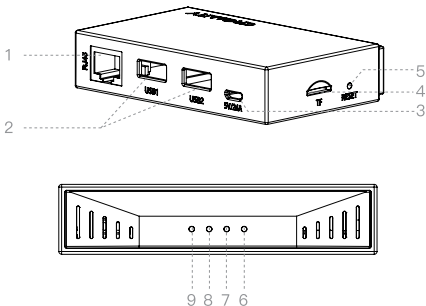
TF card*1 (Match)

Parts list

CREALITY BOX 2.0 x1 USB line*2 Converter *1 Instruction manual*1
Certificate of approval *1 TF card*1 (Match)

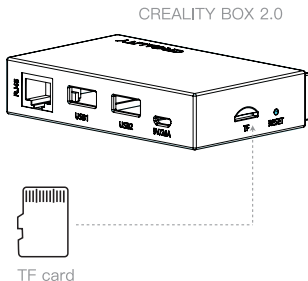
Machine introduction

CREALITY BOX 2.0



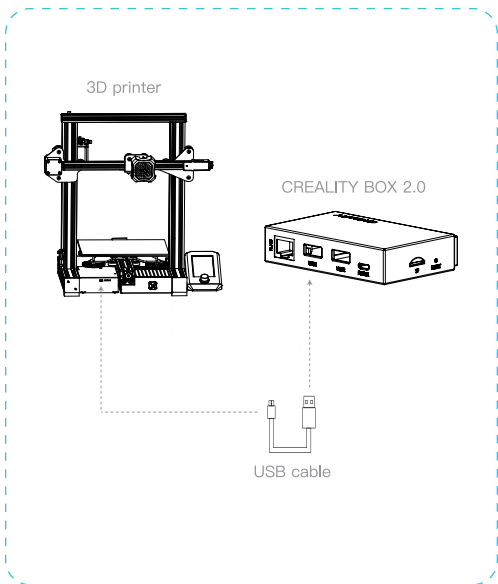
- | | |
|-----------------------------|---|
| 1 RJ45 network port | 6 Yellow light:
WIFI working status |
| 2 Connect printer/camera | 7 Blue light:
Ethernet indicator |
| 3 Micro USB power interface | 8 Green light:
Cloud/distribution
network indicator |
| 4 TF card connector | 9 Red light:
TF card indicator |
| 5 Reset button | |

Assembly procedure



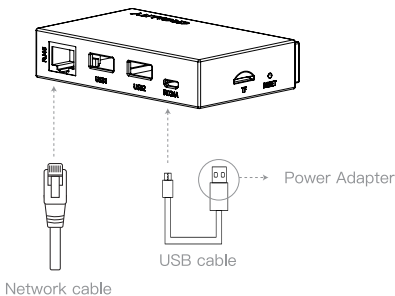
1. When the yellow light flashes, it means the box has started to work.
2. When the green light flashes, it means that the mobile phone network configuration information has been received, and the steady light means it is not connected to the cloud.
3. When the red light is always on, it means that the TF card is not inserted.

1. Insert the TF card (FAT32/exFAT format) into the TF card connector of the box.



2.Connect the printer's MINI/MicroUSB port and the box's USB1/USB2 port with the USB communication cable equipped with the printer, turn on the printer's power switch to power on the machine.

CREALITY BOX 2.0



Note: The output specification of the power adapter is 5V 2.4A ($\geq 2A$); after power on, if the box cannot be used normally due to the wrong configuration, press and hold the reset button for more than 5 seconds until the factory settings are restored and the network is reconfigured through the "Creative Cloud" APP.

3.Plug one end of the USB cable into the 5V/2.4A connector of the box, connect the other end to the power adapter and turn on the power to power up the box, then connect to the network via wired or wireless.

Download Creality Cloud APP



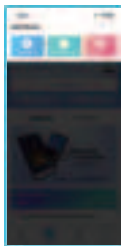
①Scan and download



②Register



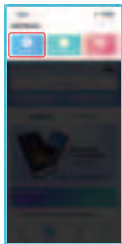
③Log in



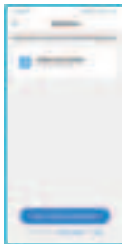
④New equipment

Find “Creality Cloud” in your mobile app store or scan QR code on the packing box to download the “Creality Cloud” APP, sign up and log in, click “Add Device” then “Bluetooth Networking” or “Scan Code to Add” to select your printer model.

Network Configuration



①Select bluetooth

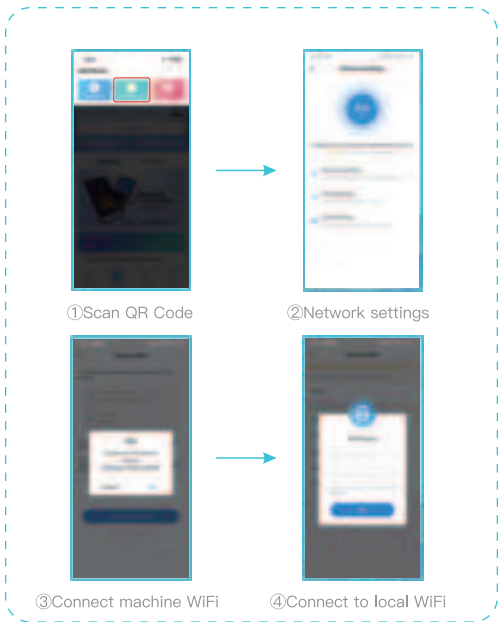


②Add equipment



③Connect to local WiFi

Method 1: Click “Add Device” → “Bluetooth Network Configuration” to select your printer model.

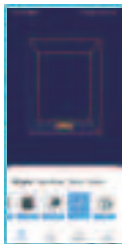


Method 2: Click “Add Device” → “Scan Code to Add” to to select your printer model.

Model Printing



①Select model



②Select machine



③Printing



④Start printing

Connect the Crealitiy Box to your Wi-Fi. Then you can select printing model, machine model and equipment, then use APP to print model.



SHENZHEN CREALITY 3D TECHNOLOGY CO.,LTD.

Add : 18F, JinXiuHongDu Building, Meilong Blvd.,
Longhua Dist., Shenzhen, China 518131

Official Website: www.creality.com Tel: +86 755-8523 4565

E-mail: info@creality.com cs@creality.com



FCC WARNING

This device complies with part 15 of the FCC Rules. Operation is subject to the following two conditions: (1) this device may not cause harmful interference, and (2) this device must accept any interference received, including interference that may cause undesired operation.

Any changes or modifications not expressly approved by the party responsible for compliance could void the user's authority to operate the equipment.

NOTE: This equipment has been tested and found to comply with the limits for a Class B digital device, pursuant to Part 15 of the FCC Rules. These limits are designed to provide reasonable protection against harmful interference in a residential installation. This equipment generates, uses and can radiate radio frequency energy and, if not installed and used in accordance with the instructions, may cause harmful interference to radio communications. However, there is no guarantee that interference will not occur in a particular installation.

If this equipment does cause harmful interference to radio or television reception, which can be determined by turning the equipment off and on, the user is encouraged to try to correct the interference by one or more of the following measures:

- Reorient or relocate the receiving antenna.
- Increase the separation between the equipment and receiver.
- Connect the equipment into an outlet on a circuit different from that to which the receiver is connected.
- Consult the dealer or an experienced radio/TV technician for help.

To maintain compliance with FCC's RF Exposure guidelines, This equipment should be installed and operated with minimum distance between 20cm the radiator your body: Use only the supplied antenna.