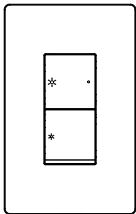




# Smart Dimmer Switch

## Operation Manual



Works  
with

AiDot



matter

## WARNING

- This product is to be installed or used in accordance with electrical codes and regulations.
- For indoor use only. Do not use in wet locations.
- If you are unsure about any part of these instructions, please consult an electrician.
- Keep this instructions sheet. It contains important technical data along with testing and troubleshooting information which will be useful after installation is completed.
- This dimmer is not compatible with standard 3-way or 4-way.
- Do not disassemble the product, or make repairs yourself. You run the risk of electric shock and voiding the limited warranty. If you need help, please contact the after-sales services.
- The maximum rated power of the device is listed in the below Specification Sheet. Do not exceed the limit.

## Product Description

### DIM-UP

- Short press to turn on
- Long press to dim-up
- Double-click to turn on the preset scene. Preset scene can be set by app. (default: brightest)

### STATUS LED

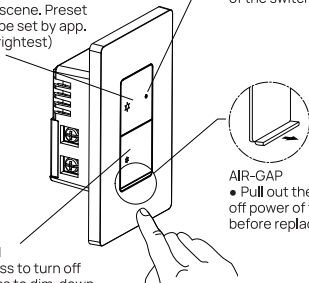
- Indicates the status of the switch

### DIM-DOWN

- Short press to turn off
- Long press to dim-down
- Double-click to delay off. Delay time can be set by app. (default: delay for 5min)

### AIR-GAP

- Pull out the tab to cut off power of the lamp before replacing the lamp



## Specification

Power supply	120V~, 60Hz
Maximum Load	Incandescent 200W, CFL/LED 100W
Operational Temperature	0~40°C (32~104°F)
Storage Temperature Range	-20~60°C (-4~140°F)
Humidity	0-85%, non condensing
Protocol	Wi-Fi (2.4GHz only), Bluetooth
Range	About 40m (131ft) indoors (depending on building materials)

## Feature list

**Preset:** Double-click the dim-up button (interval is less than 500ms) to enter preset scene. It is brightest light at default.  
(User can set the scene via App)

**Remote Control:** Turn your light on and off from anywhere using the mobile app.

**Schedule:** Set specific times for your light to turn on/off like setting connected lighting to turn on at 19:00 every Monday, or to come on at dusk or turn off at sunrise.

**Countdown:** Set a countdown timer to have switch to turn on/off automatically, eg, setting it to turn off automatically 30 minutes later.

**Delay Off:** Double-click the "Dim-down" button (interval is less than 500ms), delay off the lamp. The delay time can be set in the App. If it is not set, the factory default is to delay the switch off for 5min.

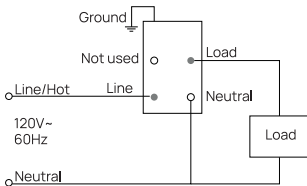
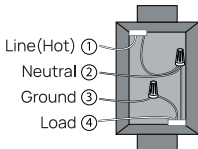
Take the latest user operation as the highest priority, and close the delay-off function at the same time.

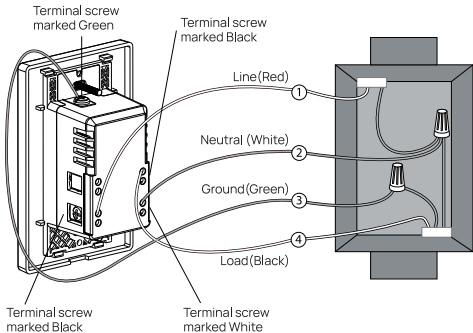
**Timer:** Set a timer to have switch to turn on or off automatically, eg, setting it to turn on automatically 30 minutes later.

**Power Memory:** Re-Power, switch restores the state that before power off.

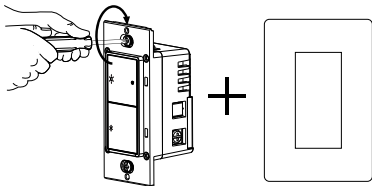
## Product Installation

1. Turn power off at the circuit breaker.
2. Remove the existing switch and connect the new switch as follow.





3. Mount the switch with the screws and attach faceplate.



4. Turn power ON at circuit breaker.

## 5. Quick start guide

**Step 1:** Download the Airdot App on App Store or Google Play.

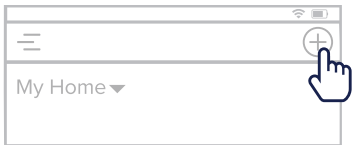


**Step 2:** Create an account and sign in.



### Step 3:

- Ensure the switch is properly wired and power is applied.
- Upon initial power-up the LED indicator will blink green and orange scrolling to show the accessory is ready to be configured.
- If the LED indicator is no longer blinking green and orange scrolling when you are ready to add the accessory, press "Dim-up" and "Dim-down" buttons for 5 seconds until the LED indicator keeps blinking red and release the buttons.
- Press '+' button to add the device.



**Step 4:** Follow the instructions on App.

Follow the instructions on the App.

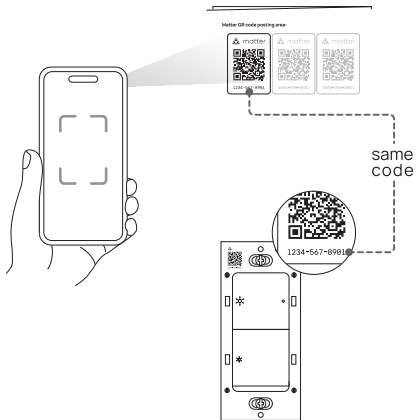
( **Note:**Please turn on Bluetooth and location. )

For more information about the usage guidelines and FAQs, Please scan the QR code below or visit the website: <https://www.aidot.com/s/000021>



**Network configuration guide for other apps. Note that other apps must support the matter protocol before using this scheme for network distribution**

- 1.Ensure the switch is properly wired and power is applied.
- 2.Upon initial power-up the LED indicator will blink green and orange scrolling to show the accessory is ready to be configured.
- 3.If the LED indicator is no longer blinking green and orange scrolling when you are ready to add the accessory, press "Dim-up" and "Dim-down" buttons for 5 seconds until the LED indicator keeps blinking red and release the buttons.
4. Scan the QR code on the base (as shown in the picture on the right). The QR code must be consistent with the matter code on the current device.
5. Follow the instructions on App.



**Matter QR code posting area:**

--	--	--

## LED Indicator

Under normal working state:

LED indicator is solid green— turn on or dimming; LED indicator is off —turn off.

Status	Behavior
Green and Orange scrolling blinking	To be configured status
Quick Blinking Orange	Connecting to the network
Solid Green	Connected to the network
	The smart switch is turned on or dimming
Solid Red	Connected failed
Off	The smart switch is turned off
	The smart switch is not configured

## **Connect to the network**

### **To be configured status:**

LED indicator blinks green and orange scrolling.

Remark: Powering on switch, is ready to start network configuration.

### **Connecting to the network:**

LED indicator quick blinking orange.

### **Connected to the network:**

LED indicator keeps in green status for 3s and then turns off.  
If switch is not turned on.

### **Connected failed:**

LED indicator keeps in red status for 3s and then turns off.  
Remark: If connection fails and led indicator turns off, please reset the smart switch to factory settings.

### **Factory default (reset):**

Hold "Dim-up" and "Dim-down" buttons for 5 seconds, and LED indicator keeps in red status, release the buttons and the resetting is done. After 5 seconds, switch gets into to be configured status.

## Troubleshooting

### Problems 1:

**LED lamp do not dim, have poor dimming range, or they flicker/buzz.**

1. Lamp is not compatible with the dimmer.
2. Please check from the official website to see if the load is an officially declared compatible lamp.

### Problems 2:

#### **Lights Flickering**

1. Lamp has a bad connection.
2. Wires not secured firmly under terminal screws of switch.

### Problems 3:

**Light does not turn ON and LED indicator does not turn ON**

1. Circuit breaker or fuse has tripped.
2. Lamp is burned out.
3. Lamp Neutral connection is not wired.

#### **Problems 4:**

##### **Light can be powered ON but LED indicator does not turn ON**

The switch hasn't been configured. Please reset the switch and connect into network.

#### **Problems 5:**

##### **Unable to remote control the lights**

1. Confirm switch is connected to the network.
2. Ensure wiring is correct.

### **FCC Statement**

This device complies with Part 15 of the FCC Rules. Operation is subject to the following two conditions:

- (1) This device may not cause harmful interference.
- (2) This device must accept any interference received, including interference that may cause undesired operation.

**Note:** The grantee is not responsible for any changes or modifications not expressly approved by the party



responsible for compliance. Such modifications could void the user's authority to operate the equipment.

**Note:** This equipment has been tested and found to comply with the limits for a Class B digital device, pursuant to part 15 of the FCC Rules. These limits are designed to provide reasonable protection against harmful interference in a residential installation.

This equipment generates uses and can radiate radio frequency energy and, if not installed and used in accordance with the instructions, may cause harmful interference to radio communications. However, there is no guarantee that interference will not occur in a particular installation. If this equipment does cause harmful interference to radio or television reception, which can be determined by turning the equipment off and on, the user is encouraged to try to correct the interference by one or more of the following measures:

- Reorient or relocate the receiving antenna.

- Increase the separation between the equipment and receiver.
- Connect the equipment into an outlet on a circuit different from that to which the receiver is connected.
- Consult the dealer or an experienced radio/TV technician for help.

### **RF Exposure Statement**

This equipment complies with FCC radiation exposure limits set forth for an uncontrolled environment. This equipment should be installed and operated with minimum distance of 20 cm between the radiator and your body.

## Contact Us

SPRING SUNSHINE TECHNOLOGY CO., LIMITED  
FLAT/RM 01-04.24/F, FU FAI COMMERCIAL  
CENTRE, 27 HILLIER STREET, SHEUNG WAN, HK  
Phone: +1 (877) 770-5727  
[www.linkind.com](http://www.linkind.com)  
[service@linkind.com](mailto:service@linkind.com)

To protect our environment, this manual is made brief.  
For detailed version, please download it from Amazon  
product page or on our website.

材质：70g双胶纸

折叠尺寸：70\*70mm

印刷方式：单黑双面印刷

\*红字部分不印刷