



Figure 1: NP10 PAB opened two halves



Figure 2: NP10 SAB opened two halves

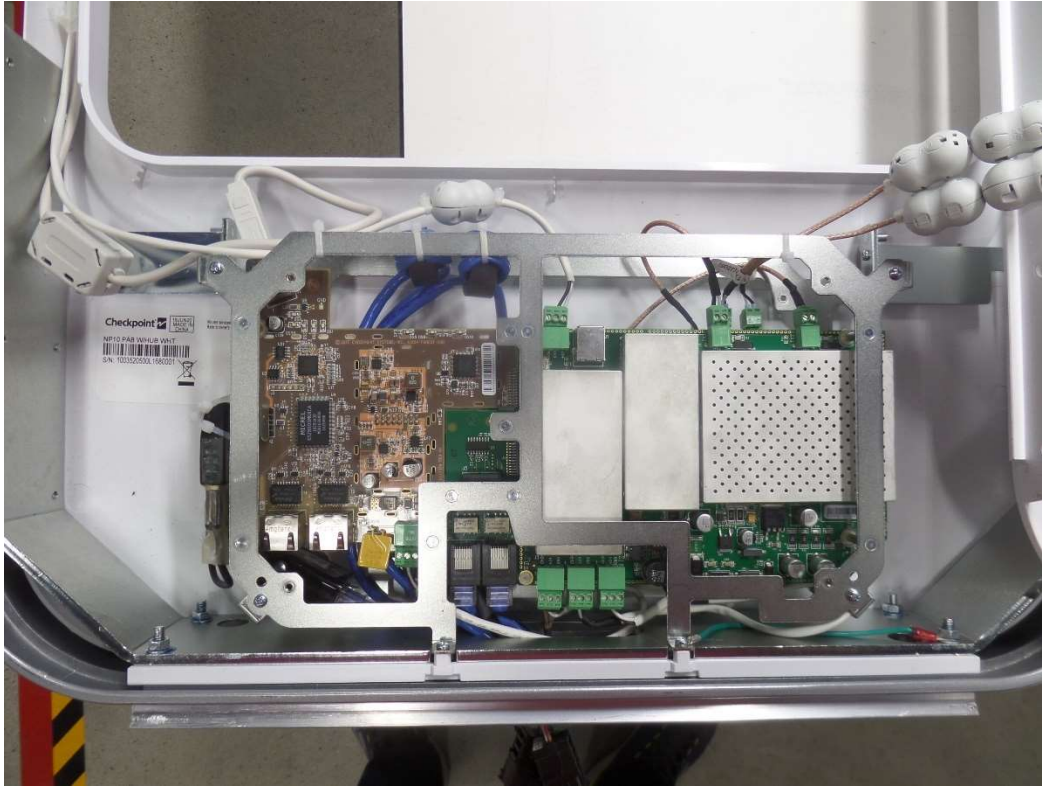


Figure 3: NP10 PAB w/HUB lower bay top side

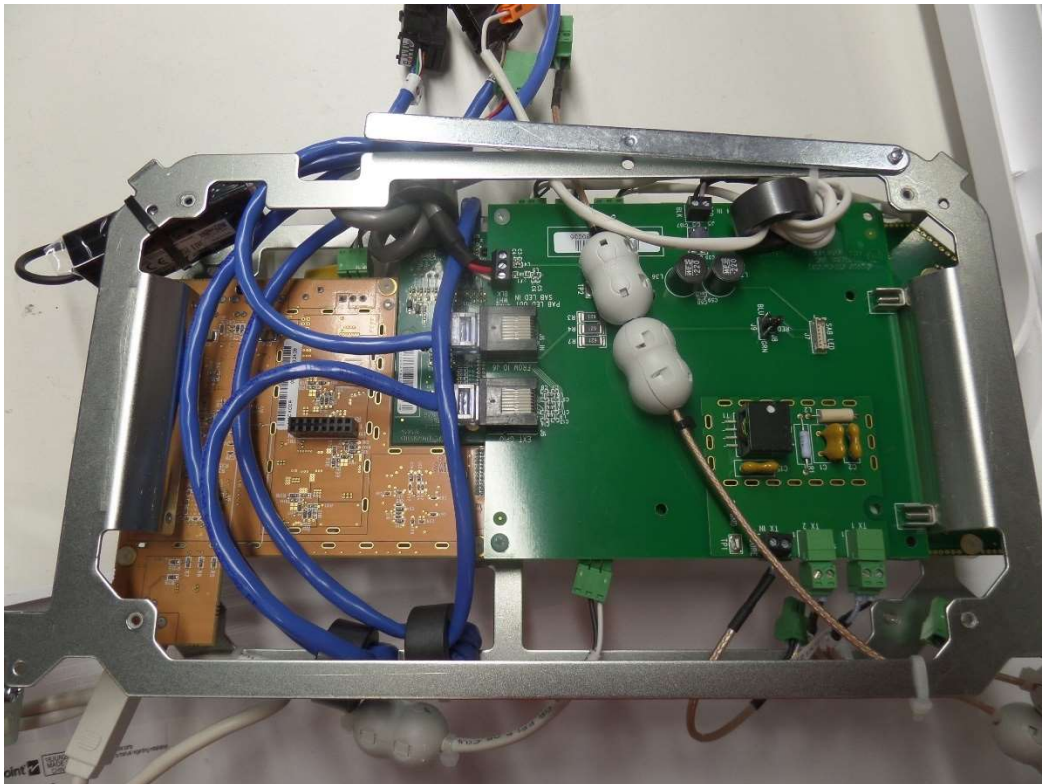


Figure 4: NP10 PAB w/HUB lower bay bottom side





Figure 5: NP10 SAB lower bay

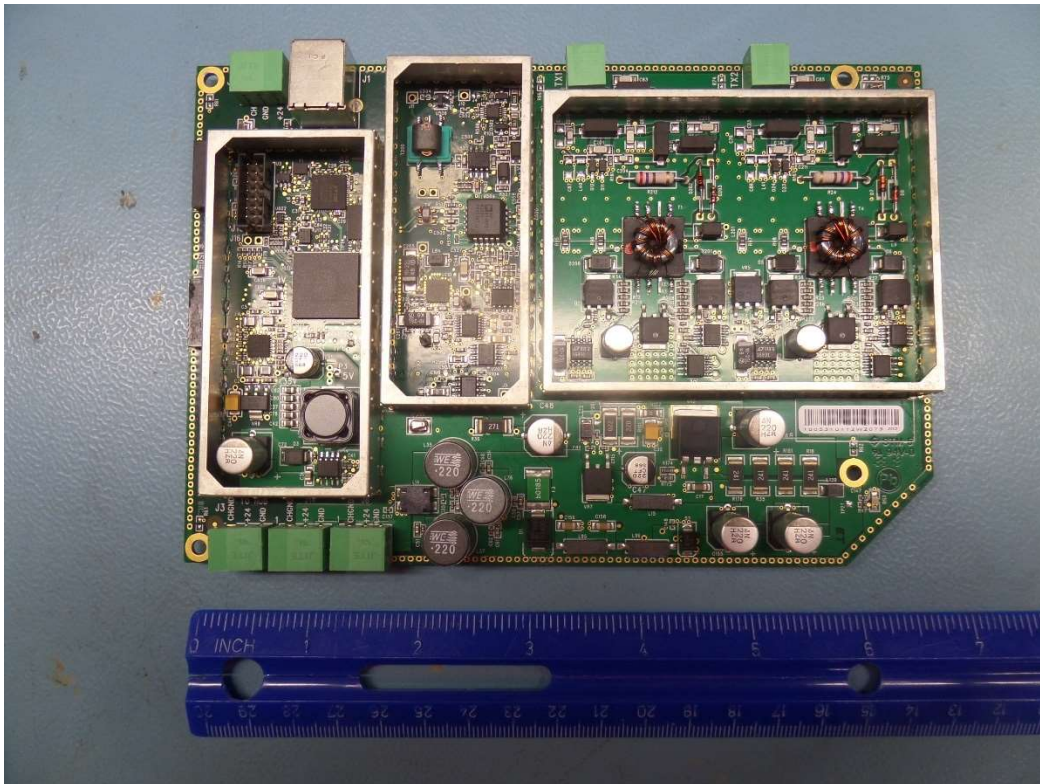


Figure 6: NP10 PAB w/HUB EAS RF board top side without shields

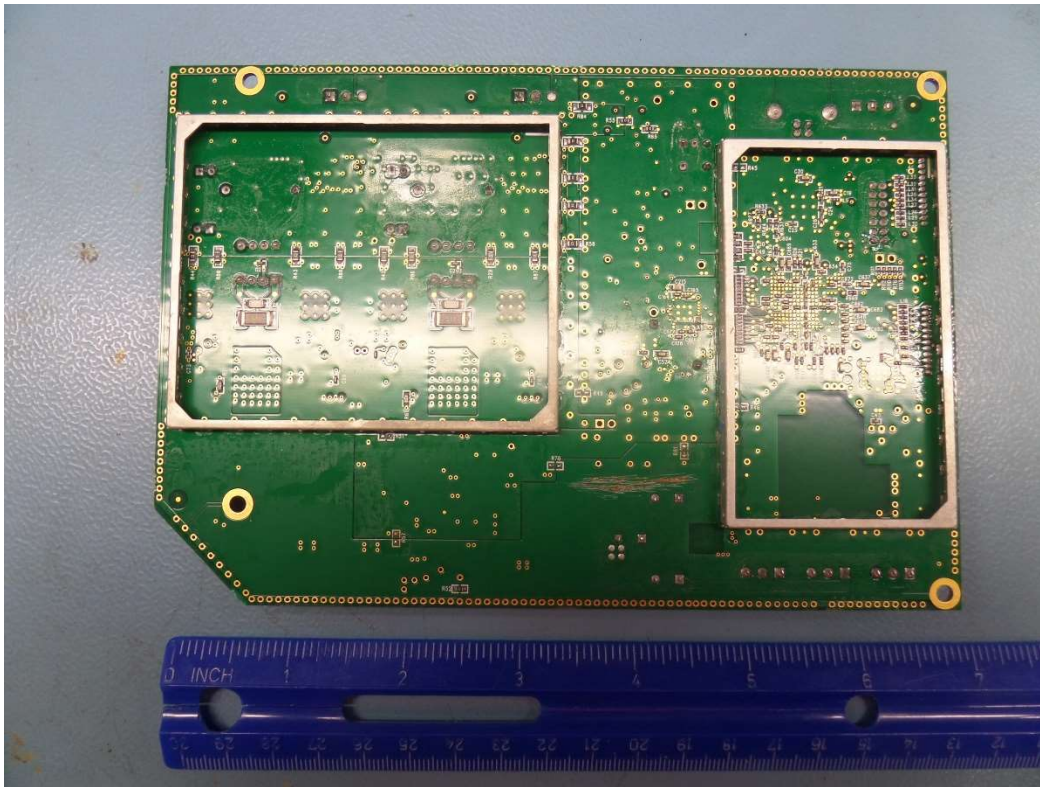


Figure 7: NP10 PAB w/HUB EAS RF board bottom side without shields

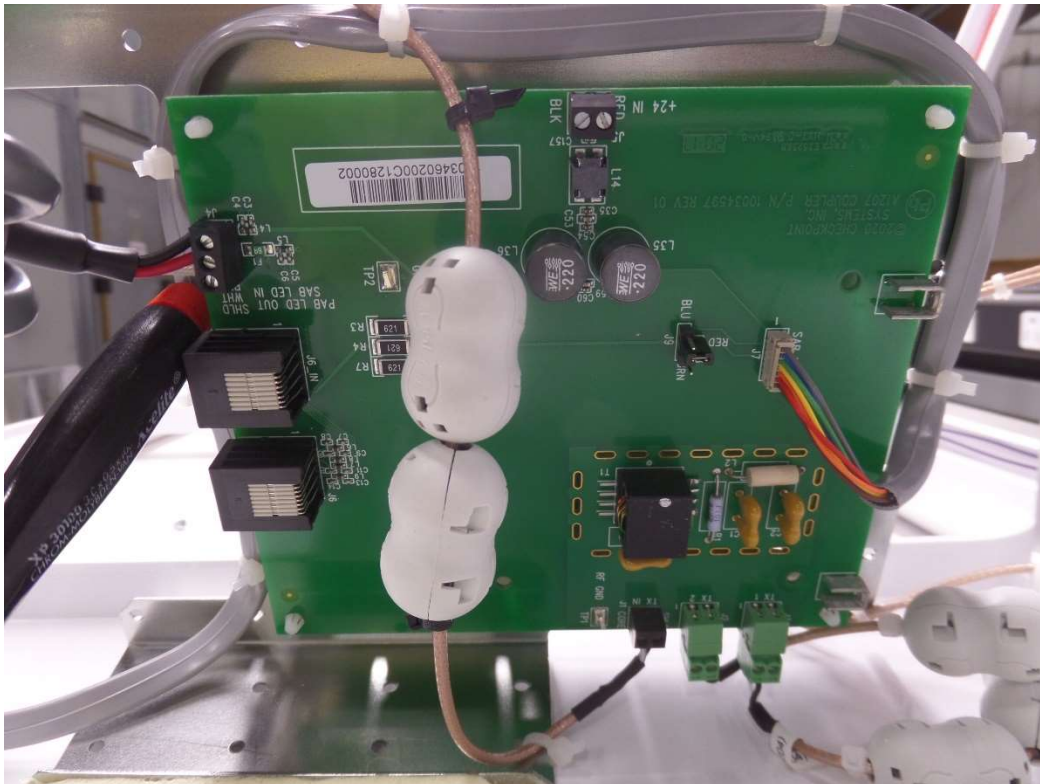


Figure 8: NP10 PAB w/HUB, NP10 SAB RF splitter board top side



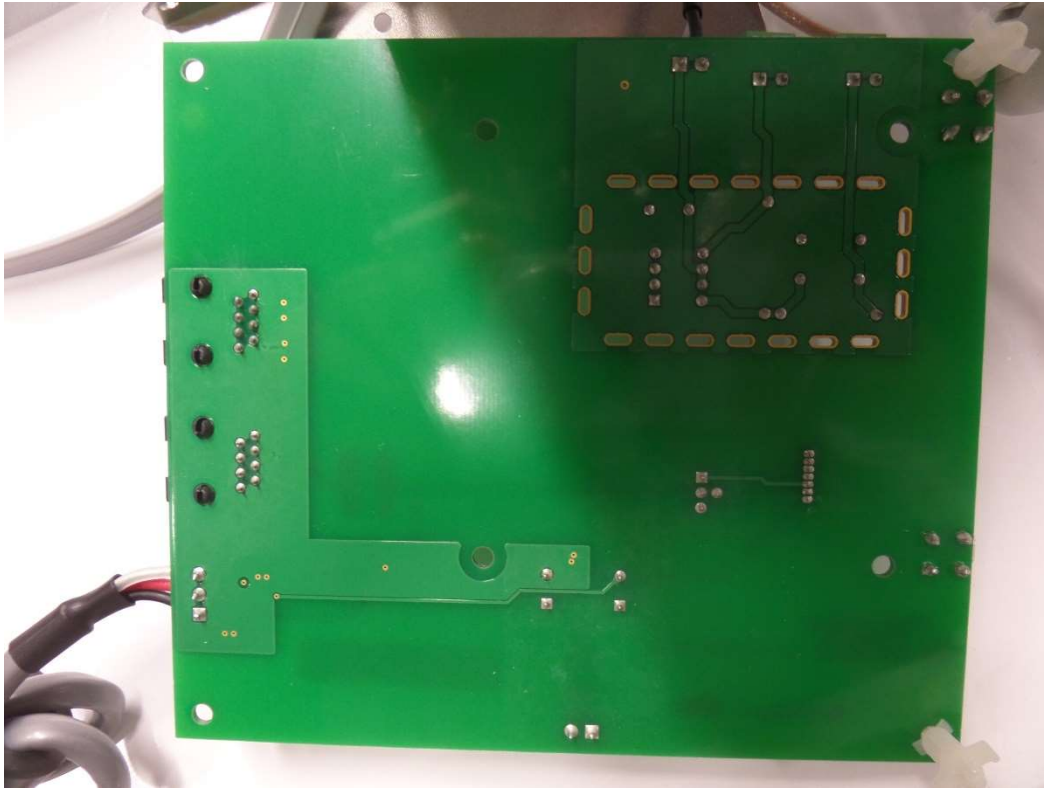


Figure 9: NP10 PAB w/HUB, NP10 SAB RF splitter board bottom side

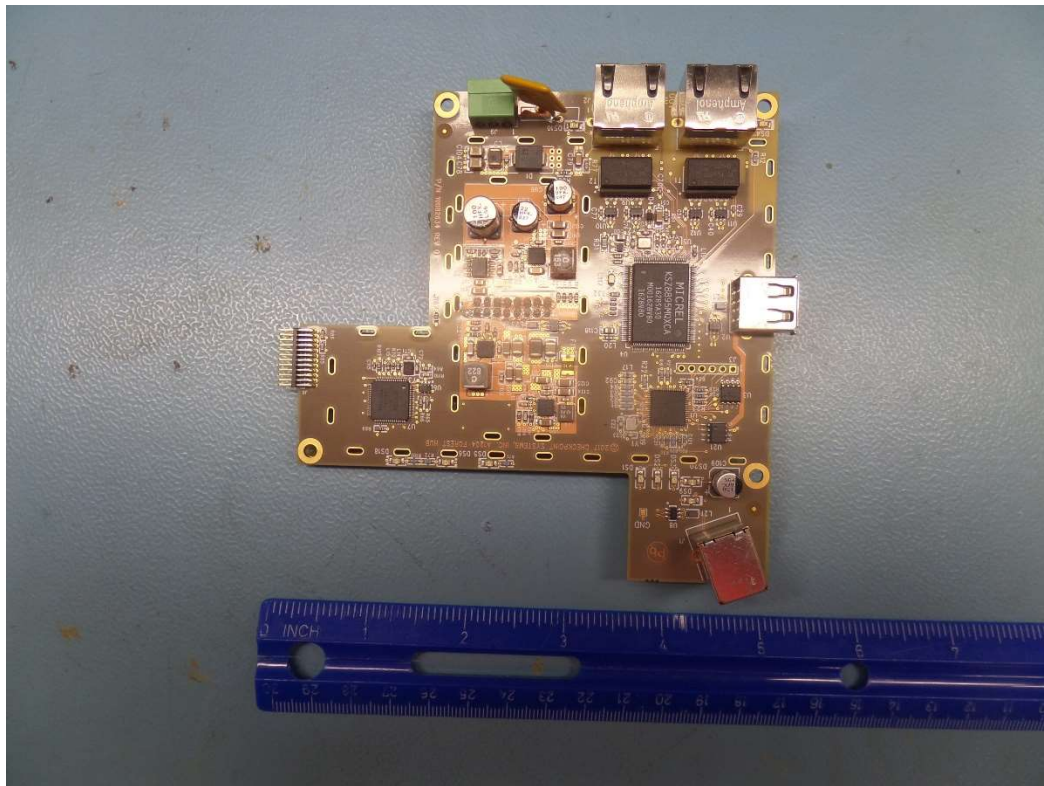


Figure 10: NP10 PAB w/HUB HUB board top side

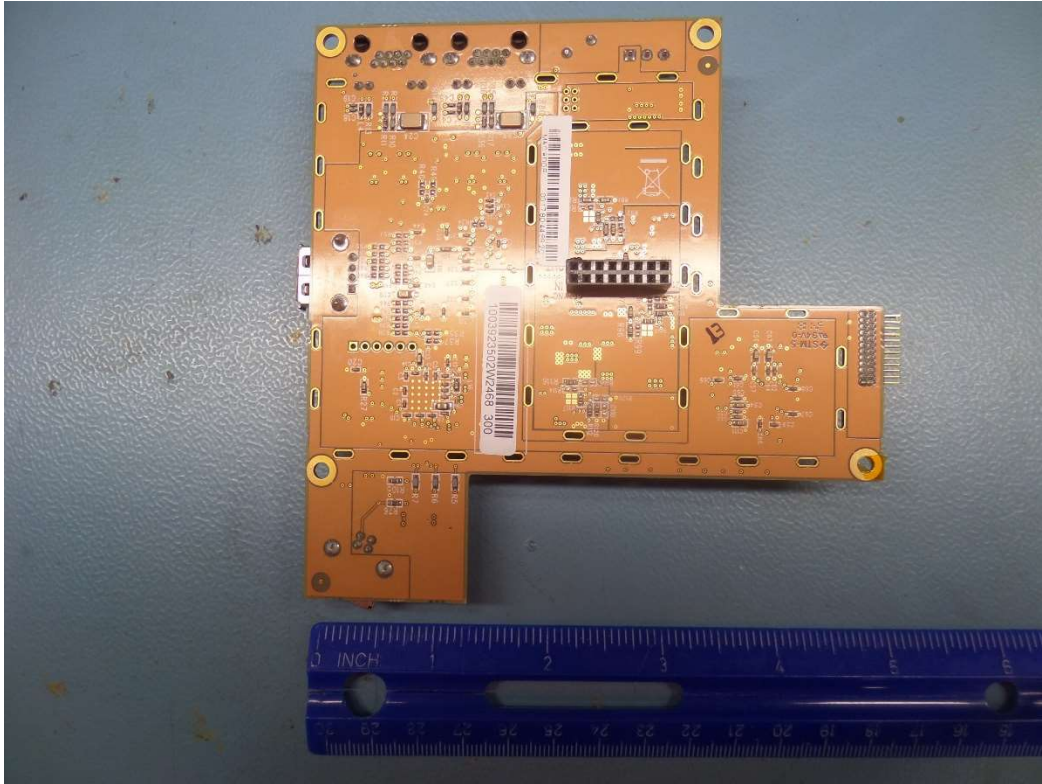


Figure 11: NP10 PAB w/HUB board bottom side

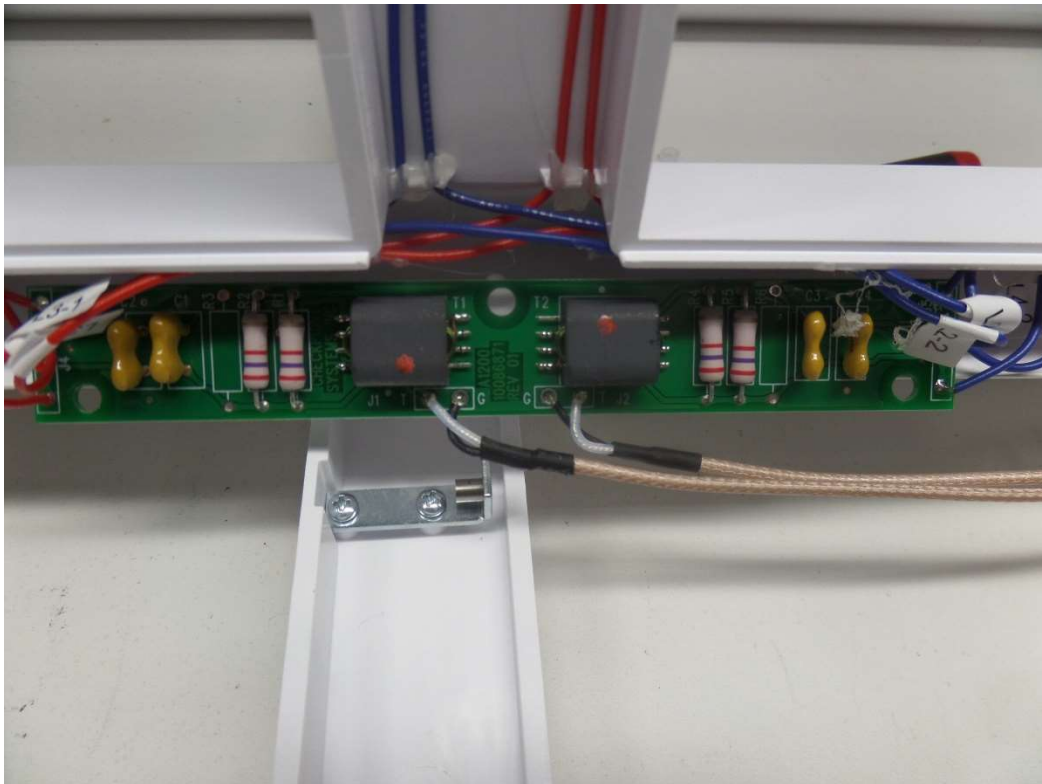


Figure 12: NP10 PAB w/HUB, NP10 SAB matching board top side

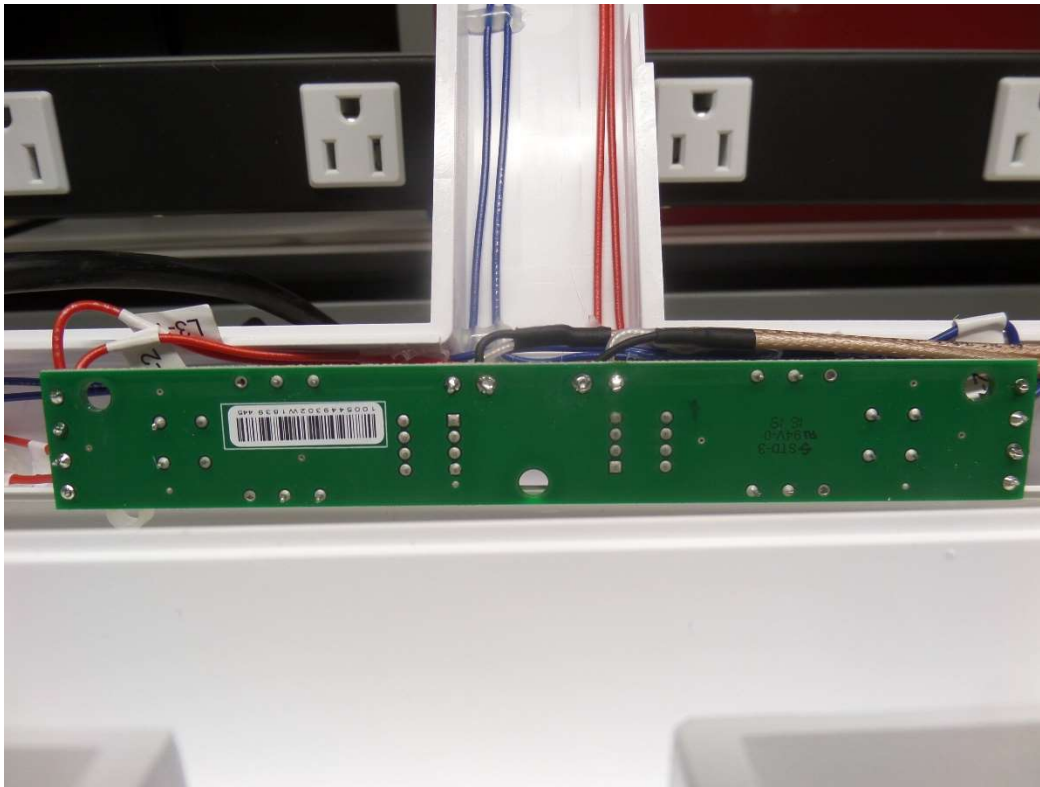


Figure 13: NP10 PAB w/HUB, NP10 SAB matching board bottom side

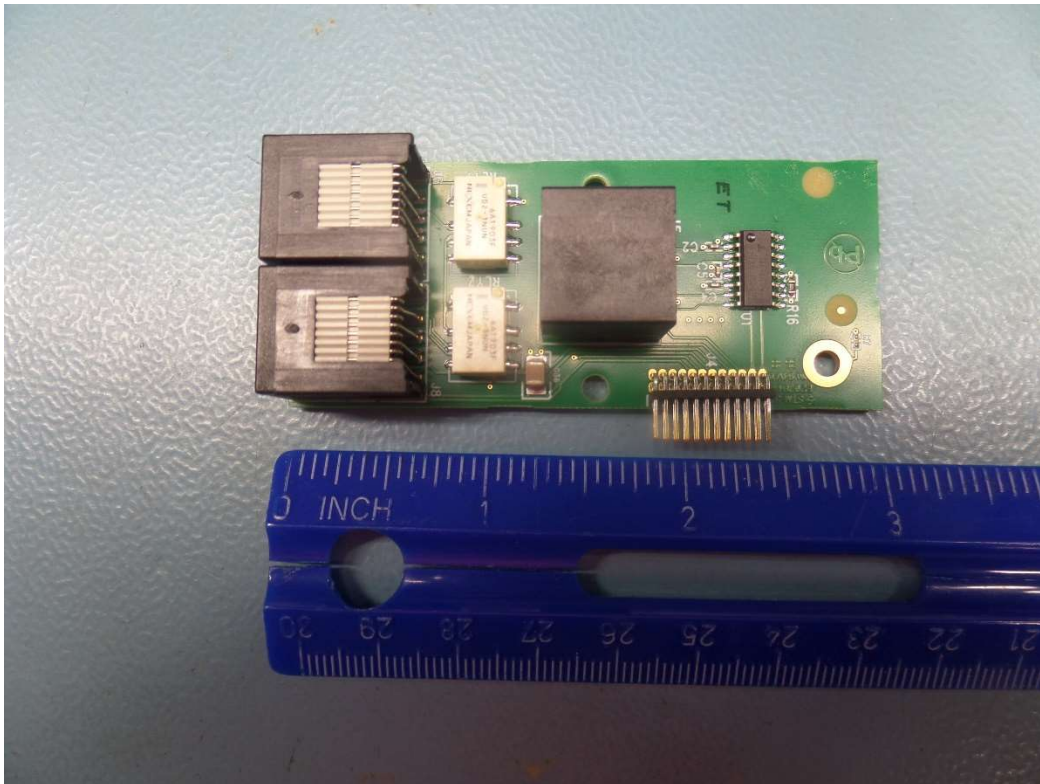


Figure 14: NP10 PAB w/HUB I/O module top side



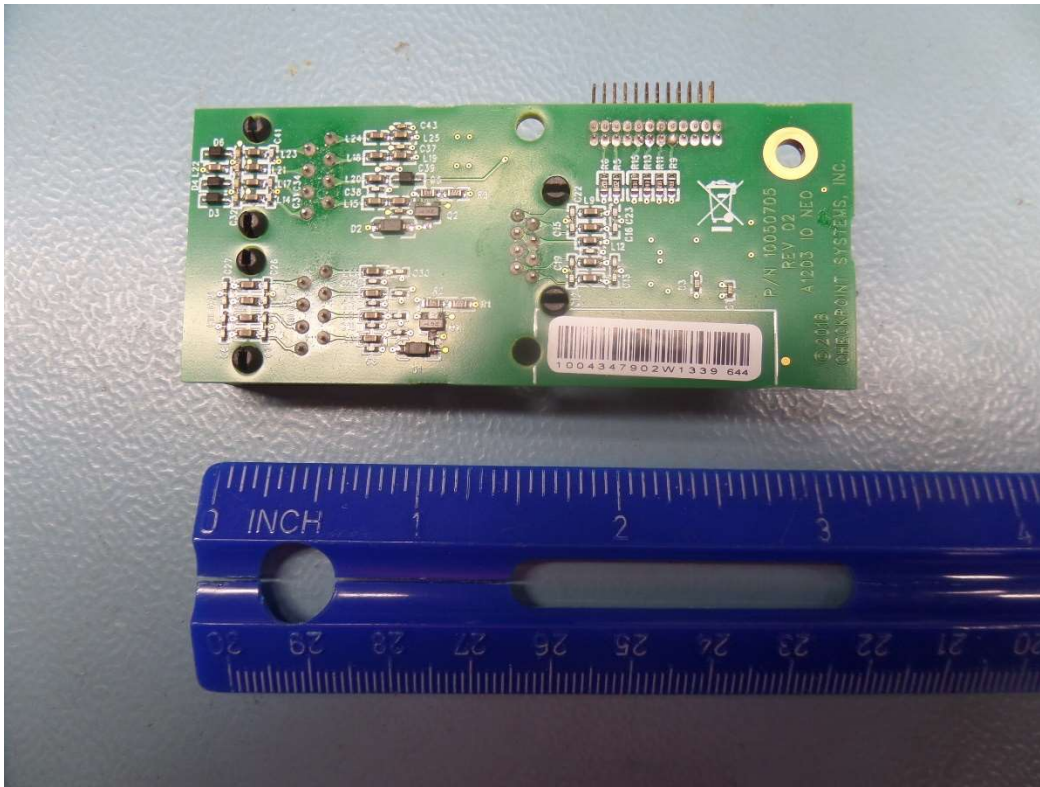


Figure 15: NP10 PAB w/HUB I/O module bottom side



Figure 16: NP10 PAB w/HUB SOM module Rock 64 & Light and sounder board top side



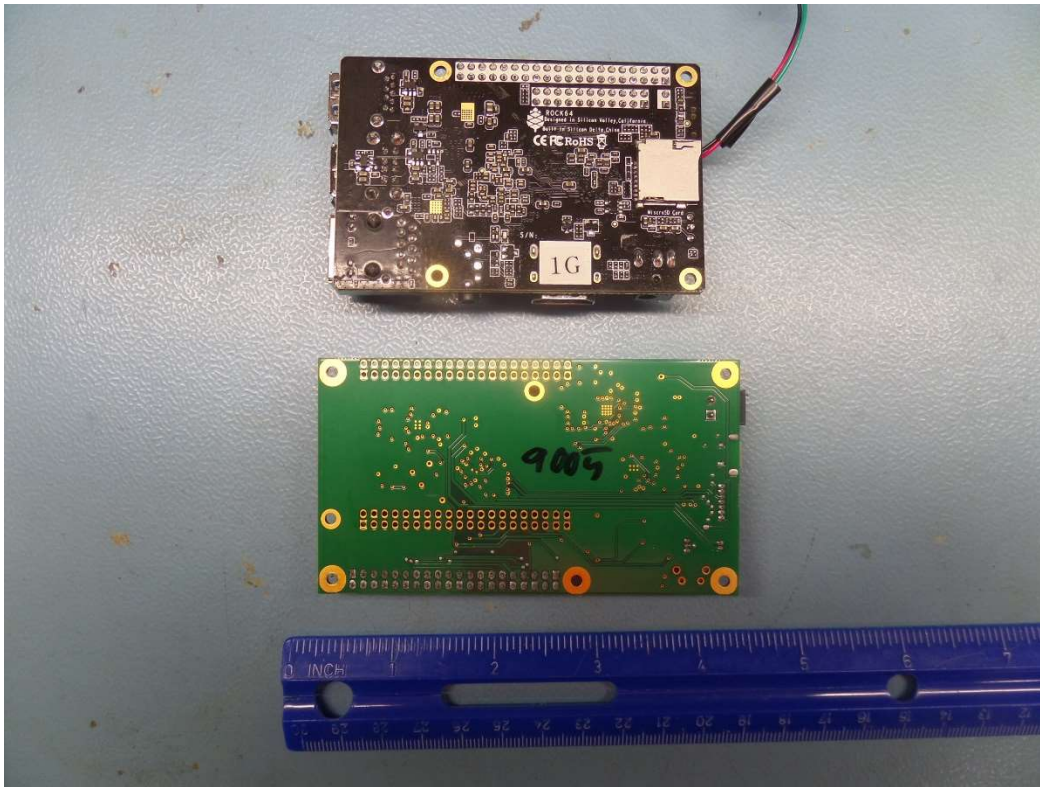


Figure 17: NP10 PAB w/HUB SOM module Rock 64 & Light and sounder board bottom side

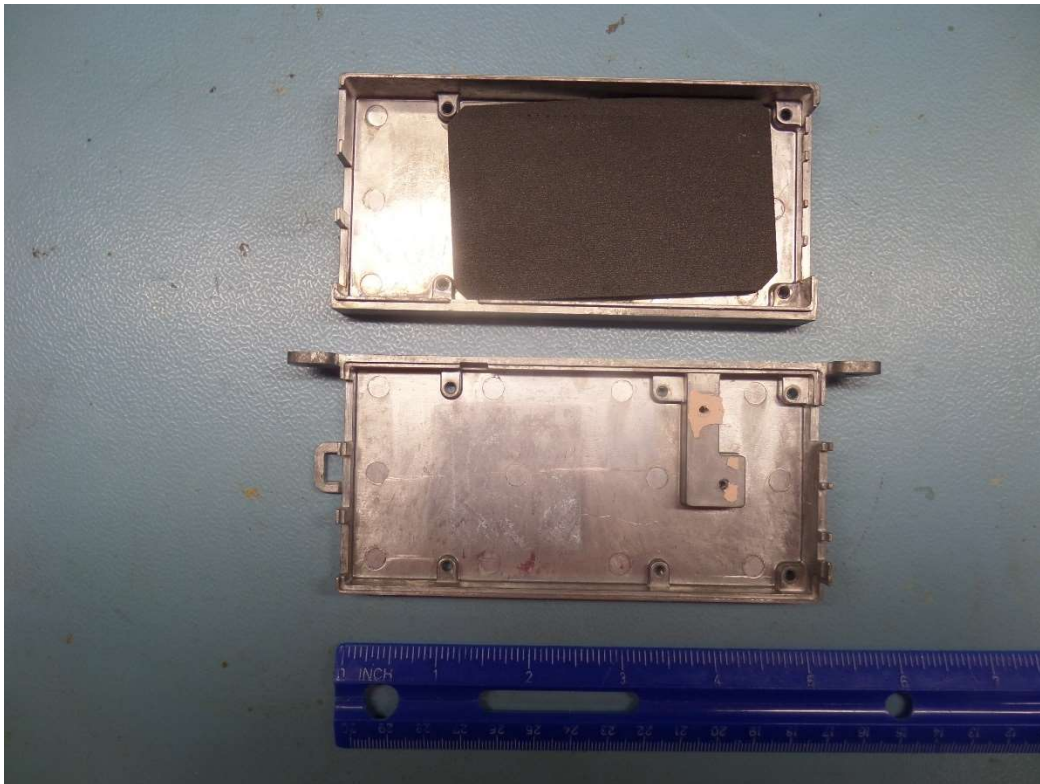


Figure 18: NP10 PAB w/HUB SOM Module top and bottom shields

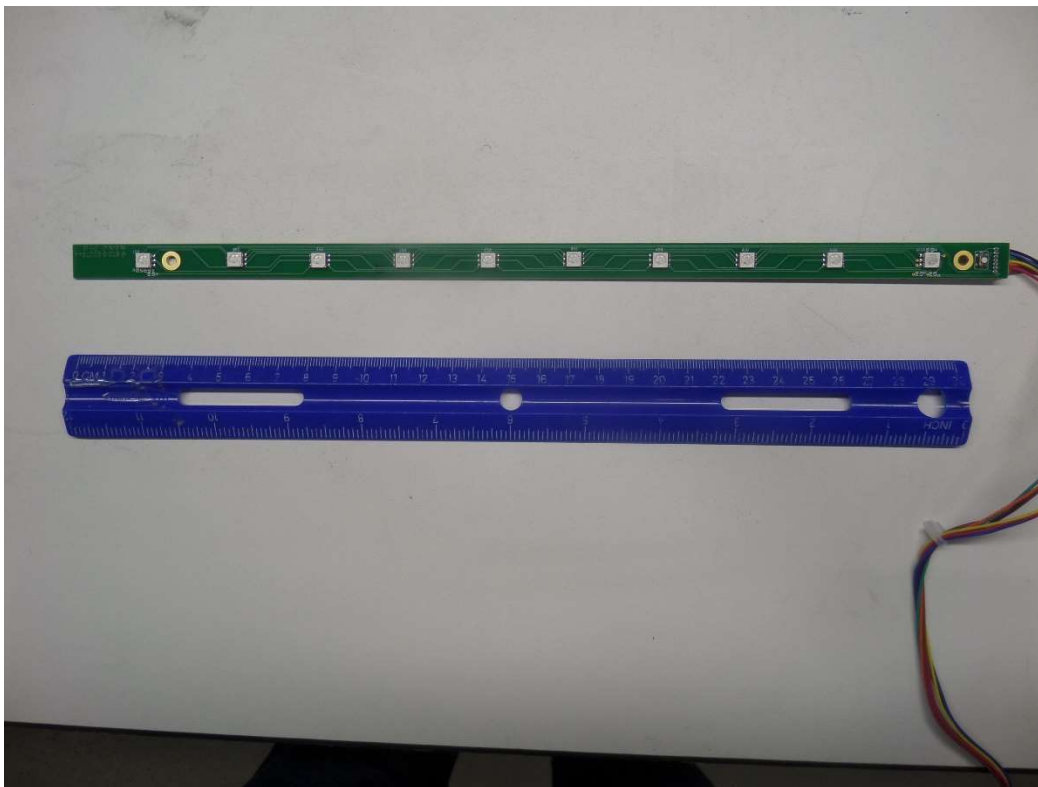


Figure 19: NP10 PAB w/HUB, NP10 SAB LED board top side



Figure 20: NP10 PAB w/HUB, NP10 SAB LED board bottom side