

PCS 1900 RF Interference Potential Test Report

Hardware Setup

Probe   Calibration Date	EF3DV3 - SN4028   September 04, 2023
DAE   Calibration Date	DAE4 Sn1546   March 11, 2024
Software Version	1.2.0.1713

Communication Systems

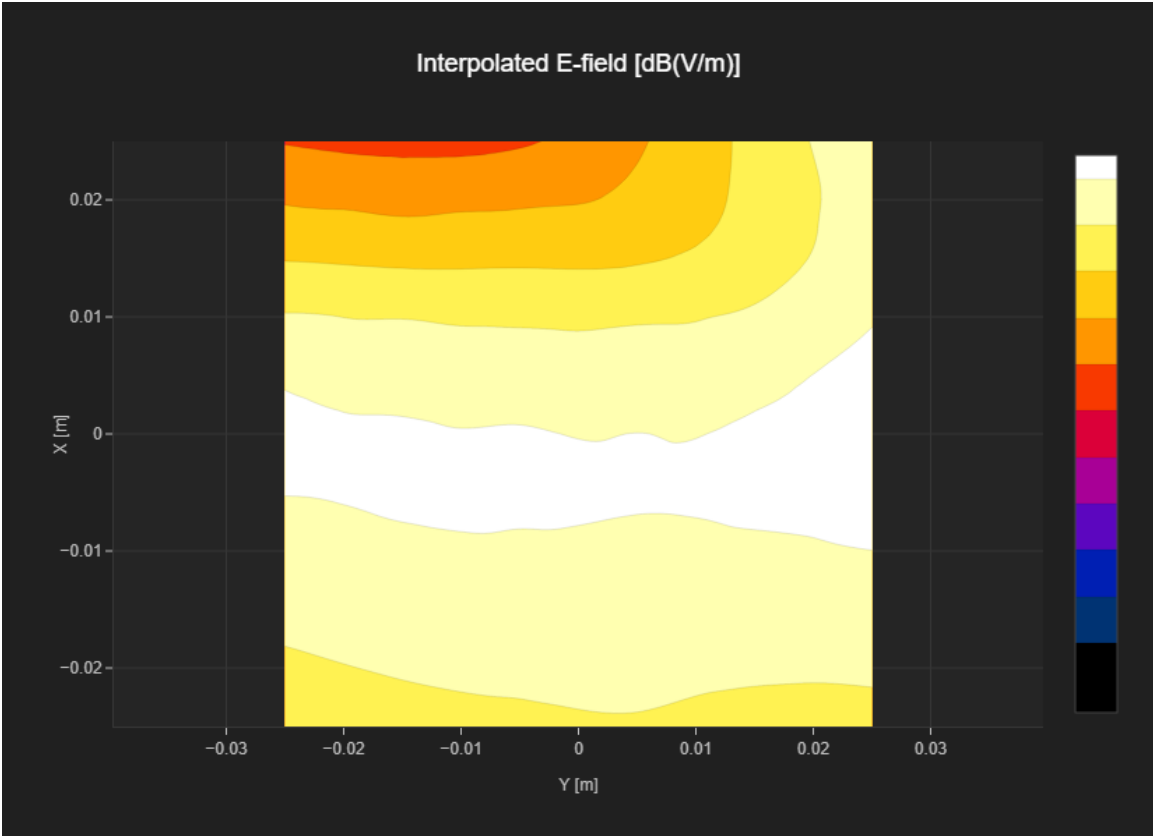
MIF	3.8
Channel   Frequency [MHz]	512   1850.2
Communication Systems' Name	GPRS-FDD (TDMA, GMSK, TN 0)

Grid Settings

Extent X [mm]	50.0	Step X [mm]	10.0
Extent Y [mm]	50.0	Step Y [mm]	10.0
Distance [mm]	15.0		

Results

Emax [dBV/m]	21.28	Eavg 50x50 Max [dBV/m]	19.67
Drift [dB]	-0.05	RFail [dBV/m]	23.47



PCS 1900 RF Interference Potential Test Report

Hardware Setup

Probe   Calibration Date	EF3DV3 - SN4028   September 04, 2023
DAE   Calibration Date	DAE4 Sn1546   March 11, 2024
Software Version	1.2.0.1713

Communication Systems

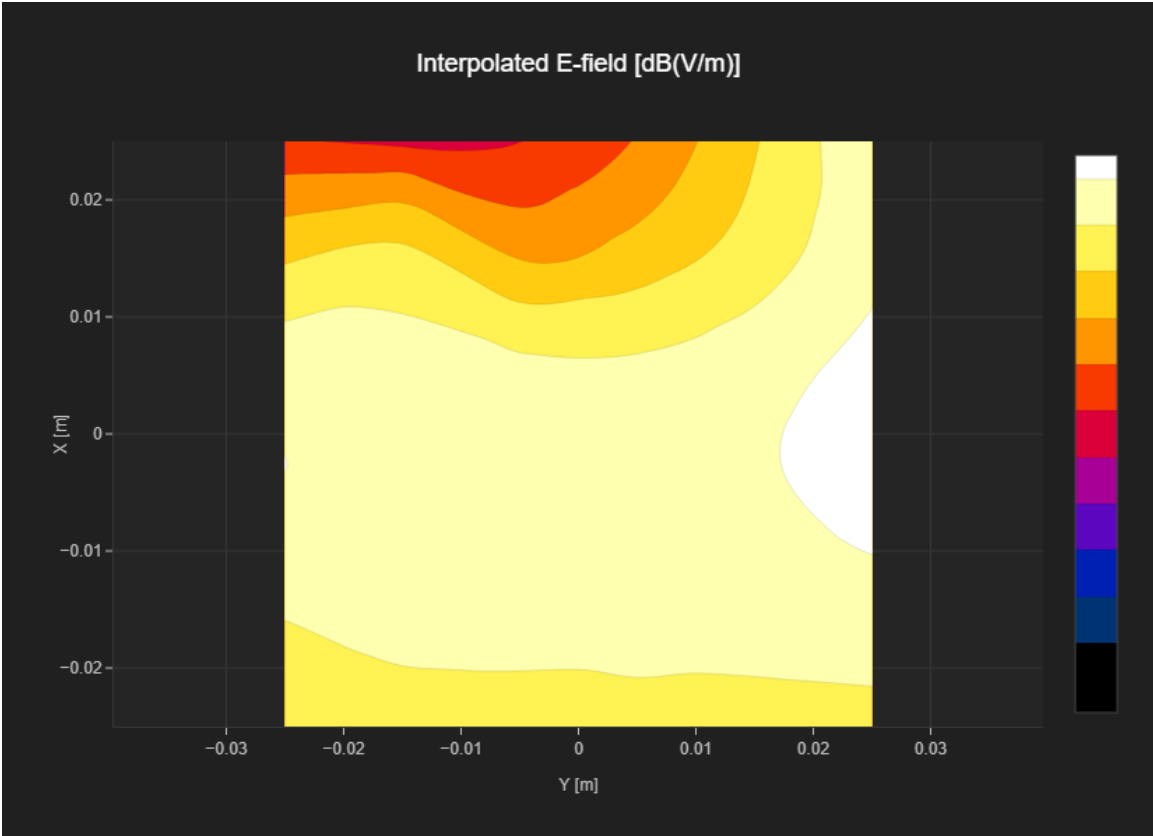
MIF	3.8
Channel   Frequency [MHz]	661   1880.0
Communication Systems' Name	GPRS-FDD (TDMA, GMSK, TN 0)

Grid Settings

Extent X [mm]	50.0	Step X [mm]	10.0
Extent Y [mm]	50.0	Step Y [mm]	10.0
Distance [mm]	15.0		

Results

Emax [dBV/m]	21.35	Eavg 50x50 Max [dBV/m]	19.67
Drift [dB]	-0.01	RFail [dBV/m]	23.47



PCS 1900 RF Interference Potential Test Report

Hardware Setup

Probe   Calibration Date	EF3DV3 - SN4028   September 04, 2023
DAE   Calibration Date	DAE4 Sn1546   March 11, 2024
Software Version	1.2.0.1713

Communication Systems

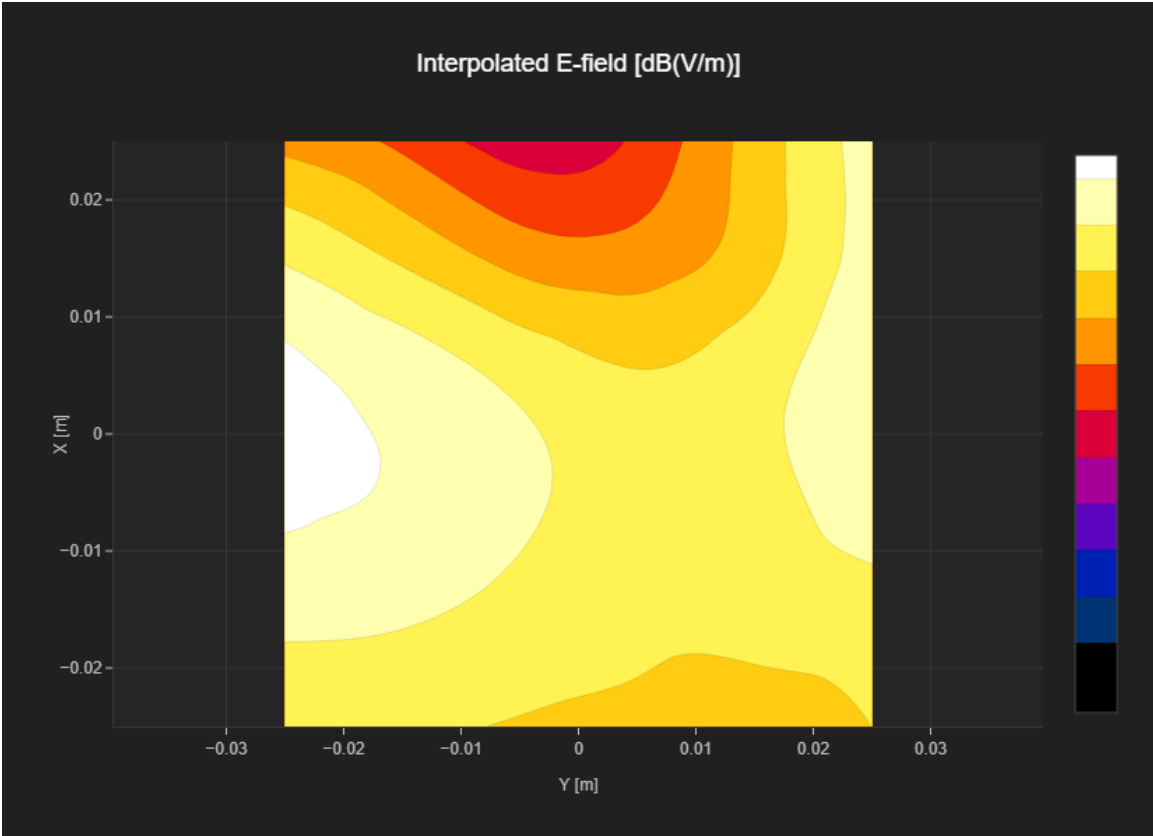
MIF	3.8
Channel   Frequency [MHz]	810   1909.8
Communication Systems' Name	GPRS-FDD (TDMA, GMSK, TN 0)

Grid Settings

Extent X [mm]	50.0	Step X [mm]	10.0
Extent Y [mm]	50.0	Step Y [mm]	10.0
Distance [mm]	15.0		

Results

Emax [dBV/m]	22.63	Eavg 50x50 Max [dBV/m]	19.18
Drift [dB]	0.2	RFail [dBV/m]	22.98



PCS 1900 RF Interference Potential Test Report

Hardware Setup

Probe   Calibration Date	EF3DV3 - SN4028   September 04, 2023
DAE   Calibration Date	DAE4 Sn1546   March 11, 2024
Software Version	1.2.0.1713

Communication Systems

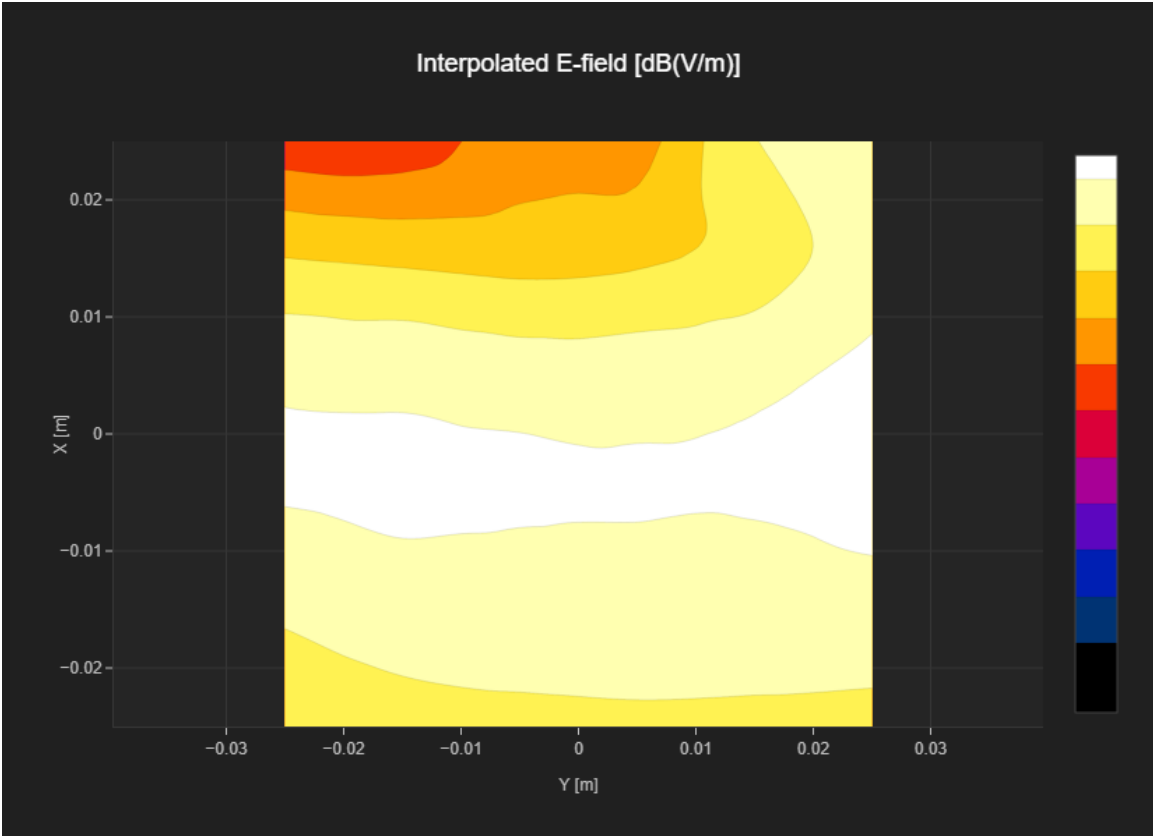
MIF	1.15
Channel   Frequency [MHz]	512   1850.2
Communication Systems' Name	GPRS-FDD (TDMA, GMSK, TN 0-1)

Grid Settings

Extent X [mm]	50.0	Step X [mm]	10.0
Extent Y [mm]	50.0	Step Y [mm]	10.0
Distance [mm]	15.0		

Results

Emax [dBV/m]	24.03	Eavg 50x50 Max [dBV/m]	22.35
Drift [dB]	-0.02	RFail [dBV/m]	23.5



PCS 1900 RF Interference Potential Test Report

Hardware Setup

Probe   Calibration Date	EF3DV3 - SN4028   September 04, 2023
DAE   Calibration Date	DAE4 Sn1546   March 11, 2024
Software Version	1.2.0.1713

Communication Systems

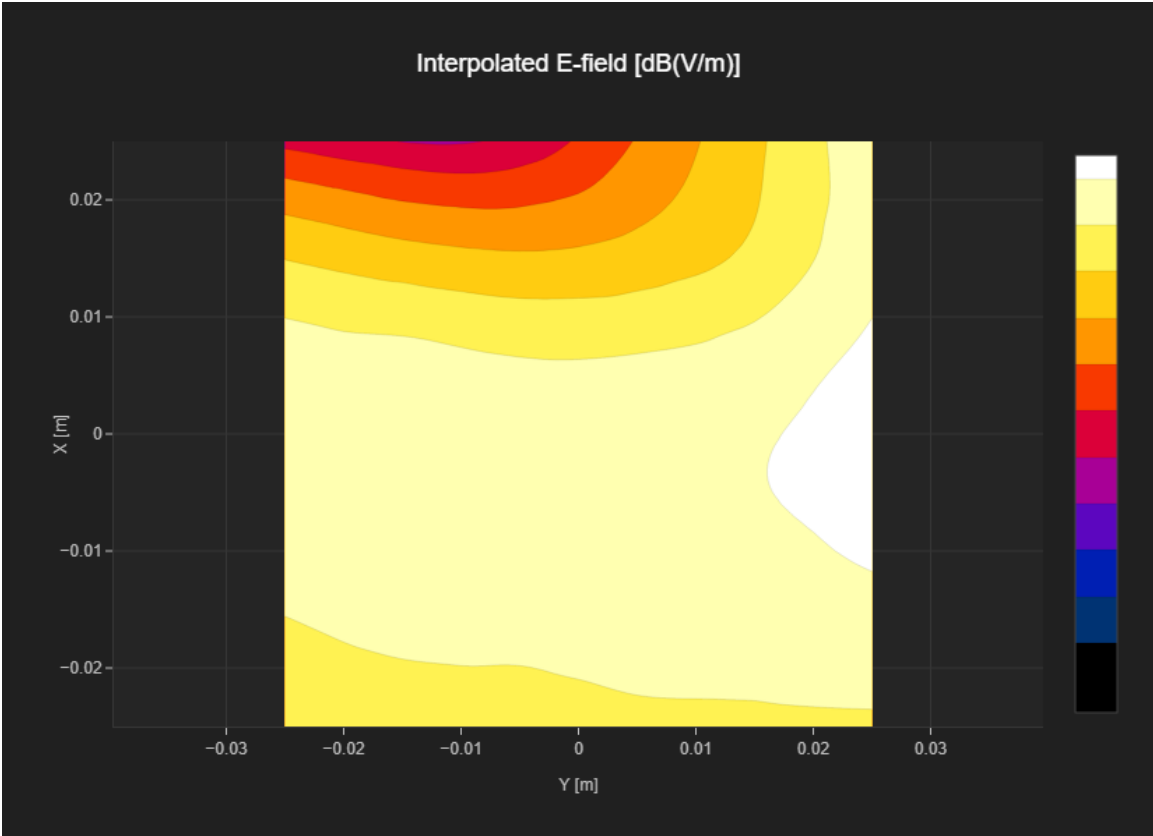
MIF	1.15
Channel   Frequency [MHz]	661   1880.0
Communication Systems' Name	GPRS-FDD (TDMA, GMSK, TN 0-1)

Grid Settings

Extent X [mm]	50.0	Step X [mm]	10.0
Extent Y [mm]	50.0	Step Y [mm]	10.0
Distance [mm]	15.0		

Results

Emax [dBV/m]	23.38	Eavg 50x50 Max [dBV/m]	21.71
Drift [dB]	-0.19	RFail [dBV/m]	22.86



PCS 1900 RF Interference Potential Test Report

Hardware Setup

Probe   Calibration Date	EF3DV3 - SN4028   September 04, 2023
DAE   Calibration Date	DAE4 Sn1546   March 11, 2024
Software Version	1.2.0.1713

Communication Systems

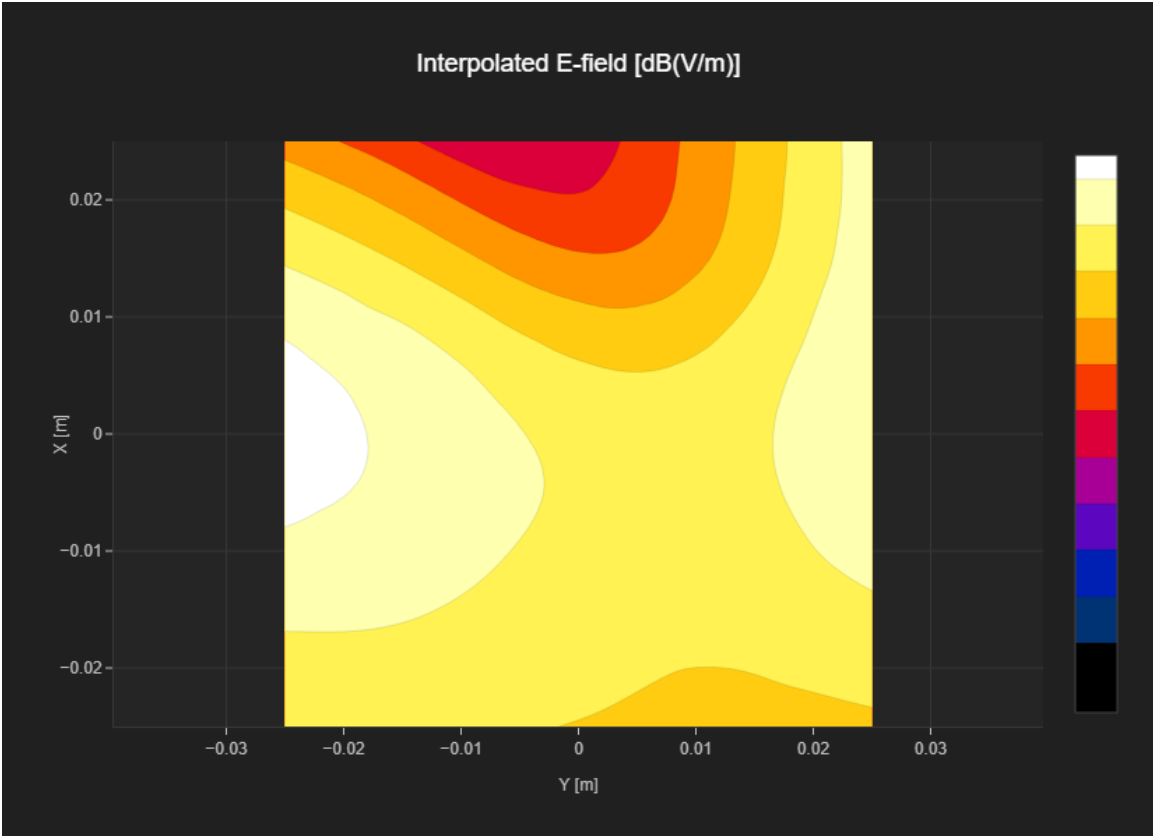
MIF	1.15
Channel   Frequency [MHz]	810   1909.8
Communication Systems' Name	GPRS-FDD (TDMA, GMSK, TN 0-1)

Grid Settings

Extent X [mm]	50.0	Step X [mm]	10.0
Extent Y [mm]	50.0	Step Y [mm]	10.0
Distance [mm]	15.0		

Results

Emax [dBV/m]	24.32	Eavg 50x50 Max [dBV/m]	20.86
Drift [dB]	-0.07	RFail [dBV/m]	22.01



PCS 1900 RF Interference Potential Test Report

Hardware Setup

Probe   Calibration Date	EF3DV3 - SN4028   September 04, 2023
DAE   Calibration Date	DAE4 Sn1546   March 11, 2024
Software Version	1.2.0.1713

Communication Systems

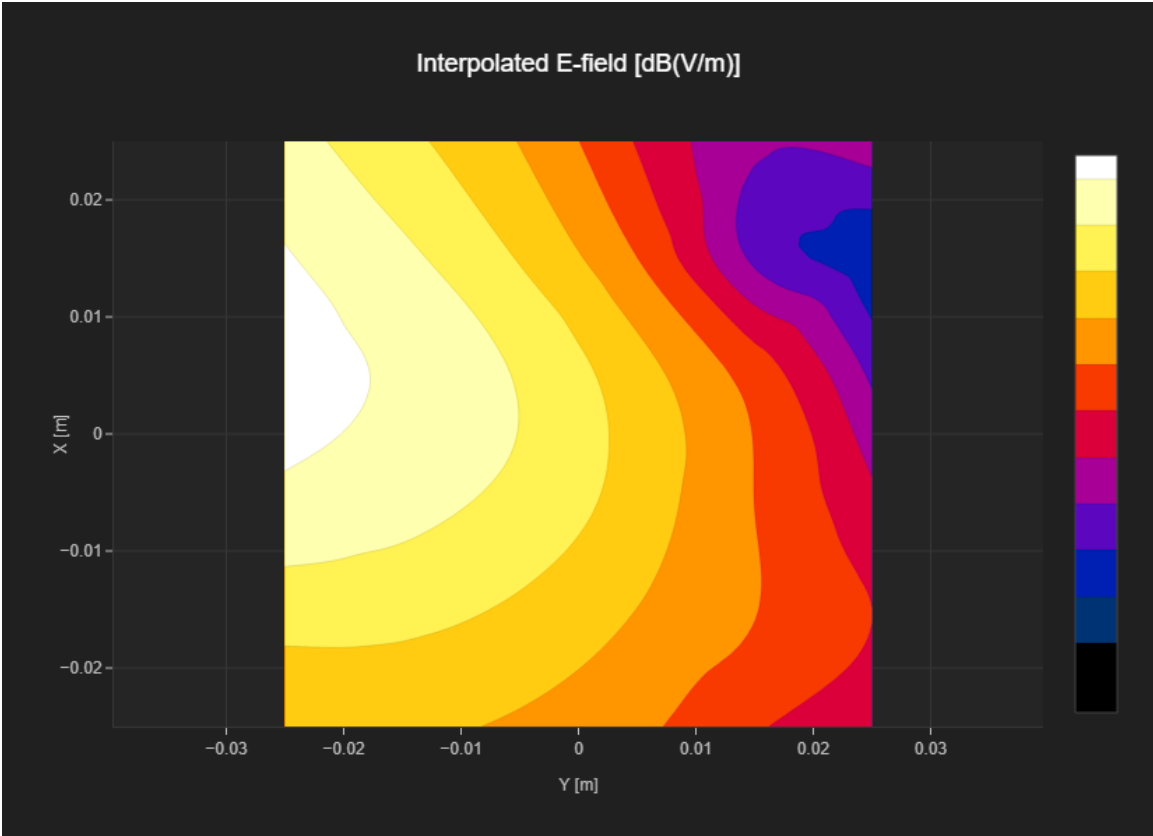
MIF	3.8
Channel   Frequency [MHz]	512   1850.2
Communication Systems' Name	GPRS-FDD (TDMA, GMSK, TN 0)

Grid Settings

Extent X [mm]	50.0	Step X [mm]	10.0
Extent Y [mm]	50.0	Step Y [mm]	10.0
Distance [mm]	15.0		

Results

Emax [dBV/m]	26.38	Eavg 50x50 Max [dBV/m]	21.27
Drift [dB]	-0.13	RFail [dBV/m]	25.07



PCS 1900 RF Interference Potential Test Report

Hardware Setup

Probe   Calibration Date	EF3DV3 - SN4028   September 04, 2023
DAE   Calibration Date	DAE4 Sn1546   March 11, 2024
Software Version	1.2.0.1713

Communication Systems

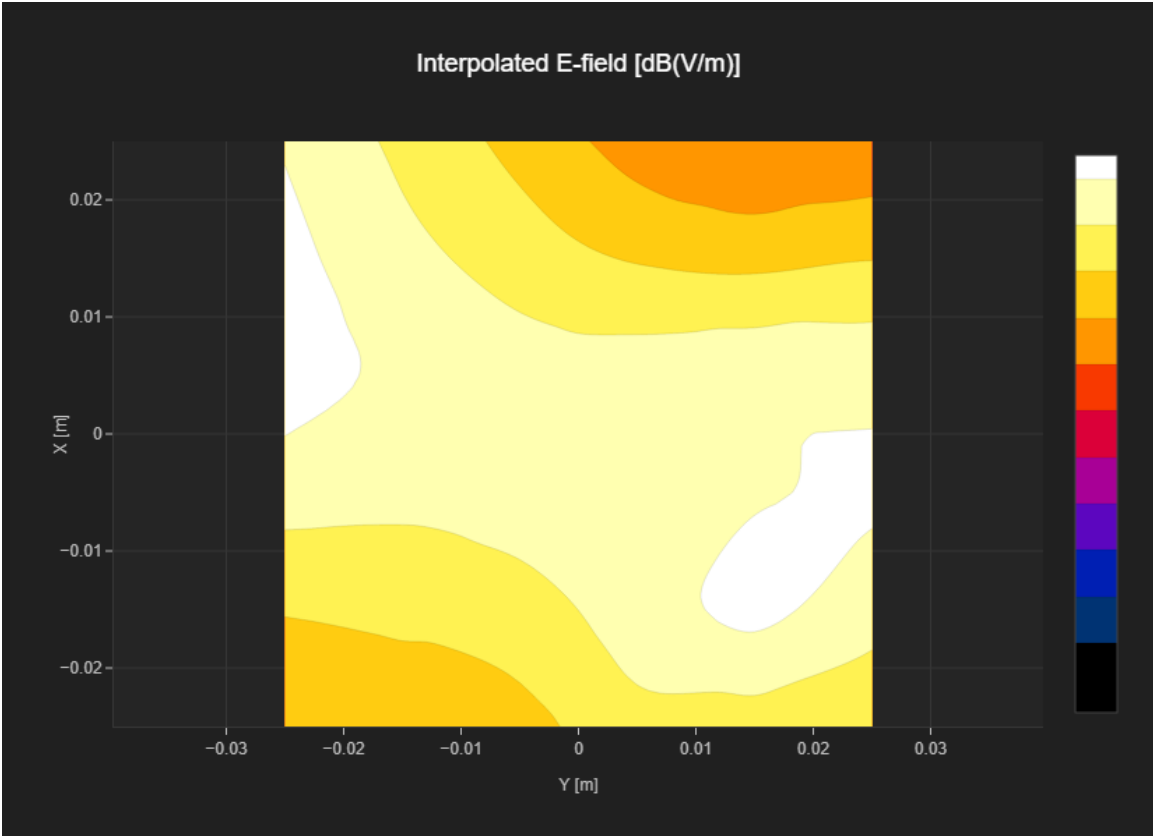
MIF	3.8
Channel   Frequency [MHz]	661   1880.0
Communication Systems' Name	GPRS-FDD (TDMA, GMSK, TN 0)

Grid Settings

Extent X [mm]	50.0	Step X [mm]	10.0
Extent Y [mm]	50.0	Step Y [mm]	10.0
Distance [mm]	15.0		

Results

Emax [dBV/m]	26.63	Eavg 50x50 Max [dBV/m]	22.91
Drift [dB]	0.03	RFail [dBV/m]	26.71





PCS 1900 RF Interference Potential Test Report

Hardware Setup

Probe   Calibration Date	EF3DV3 - SN4028   September 04, 2023
DAE   Calibration Date	DAE4 Sn1546   March 11, 2024
Software Version	1.2.0.1713

Communication Systems

MIF	3.8
Channel   Frequency [MHz]	810   1909.8
Communication Systems' Name	GPRS-FDD (TDMA, GMSK, TN 0)

Grid Settings

Extent X [mm]	50.0	Step X [mm]	10.0
Extent Y [mm]	50.0	Step Y [mm]	10.0
Distance [mm]	15.0		

Results

Emax [dBV/m]	23.25	Eavg 50x50 Max [dBV/m]	21.18
Drift [dB]	-0.06	RFail [dBV/m]	24.98

