



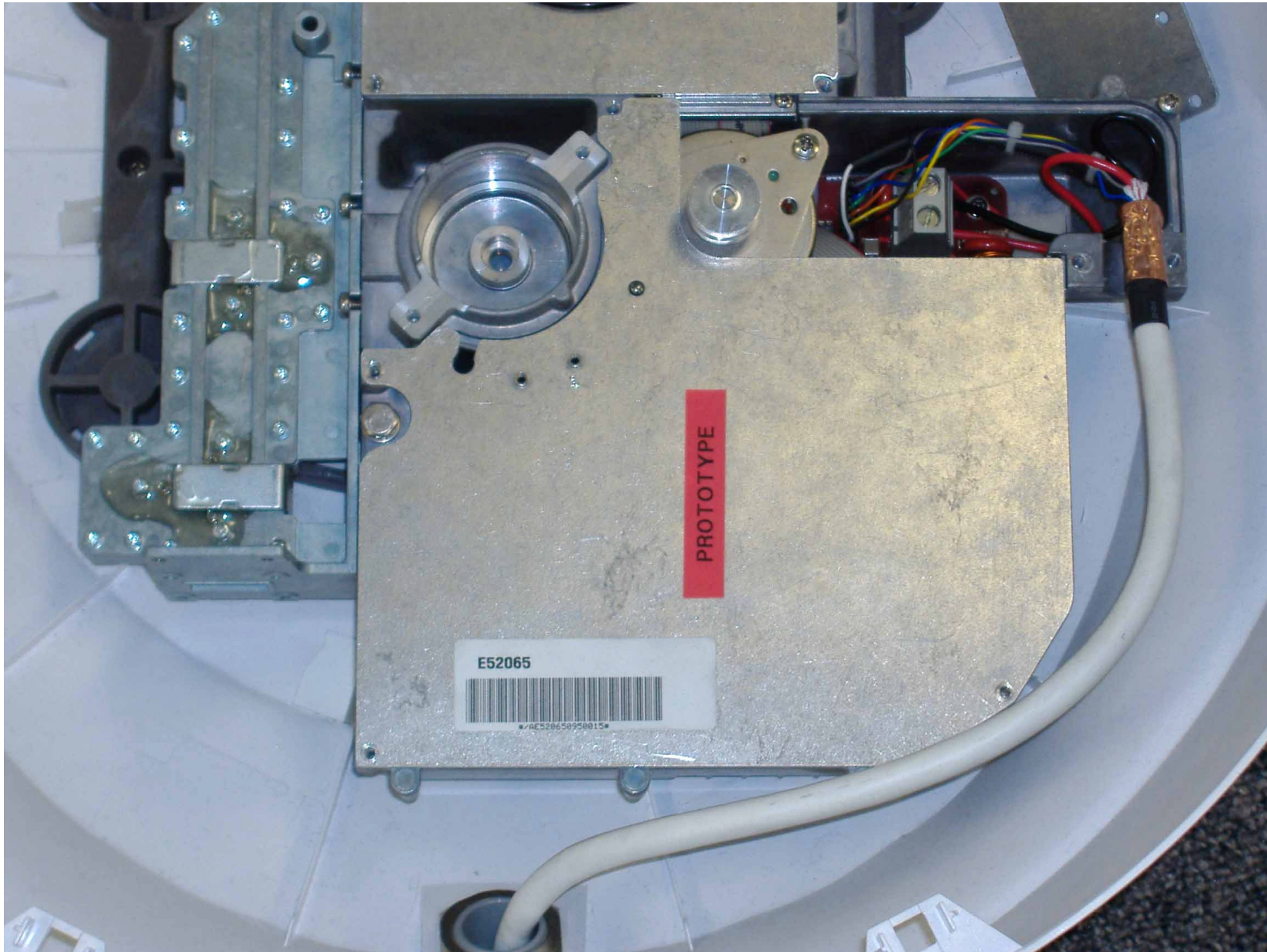
RD424 4kW 24" Radome Scanner

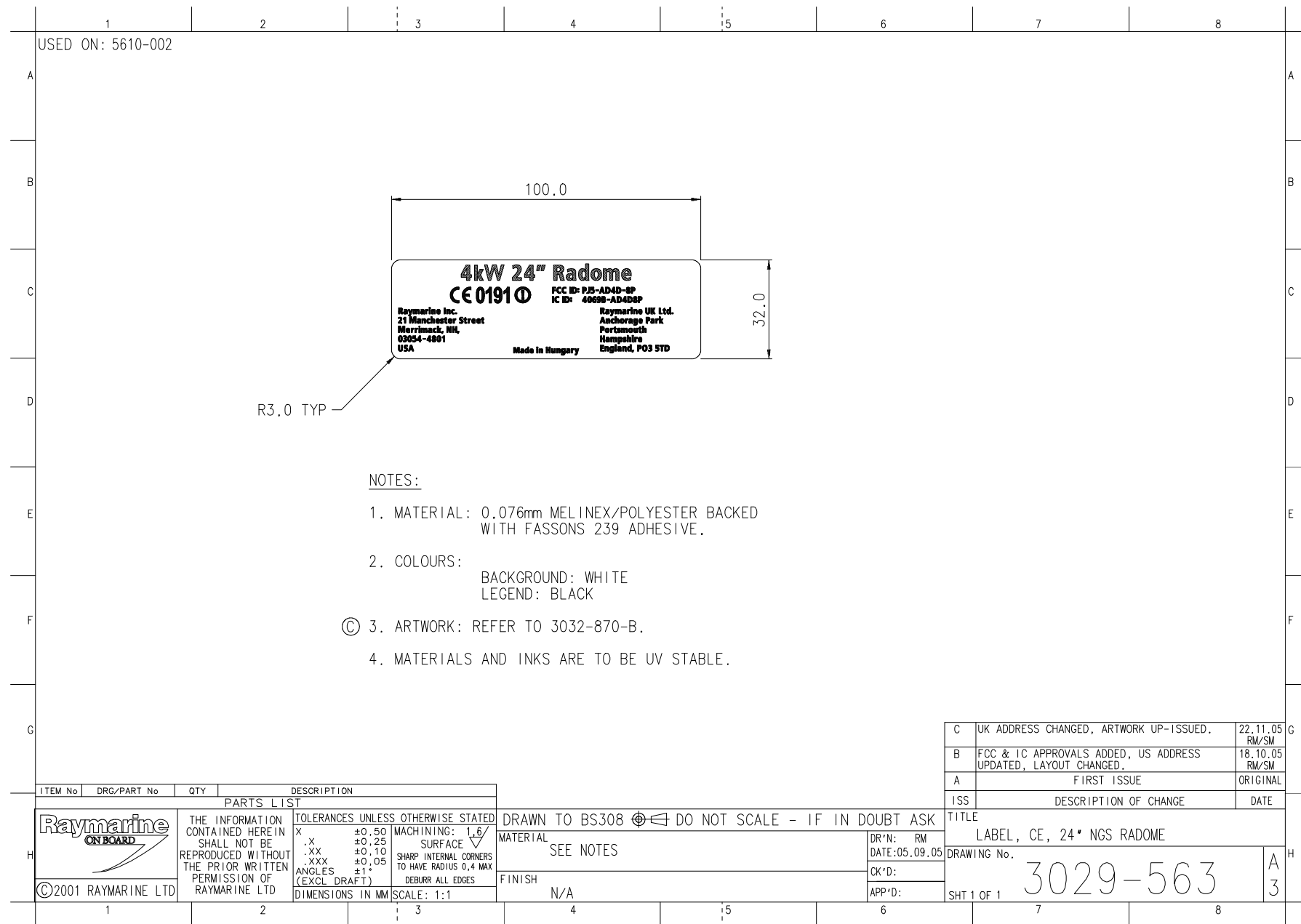
Product and Packaging Labels

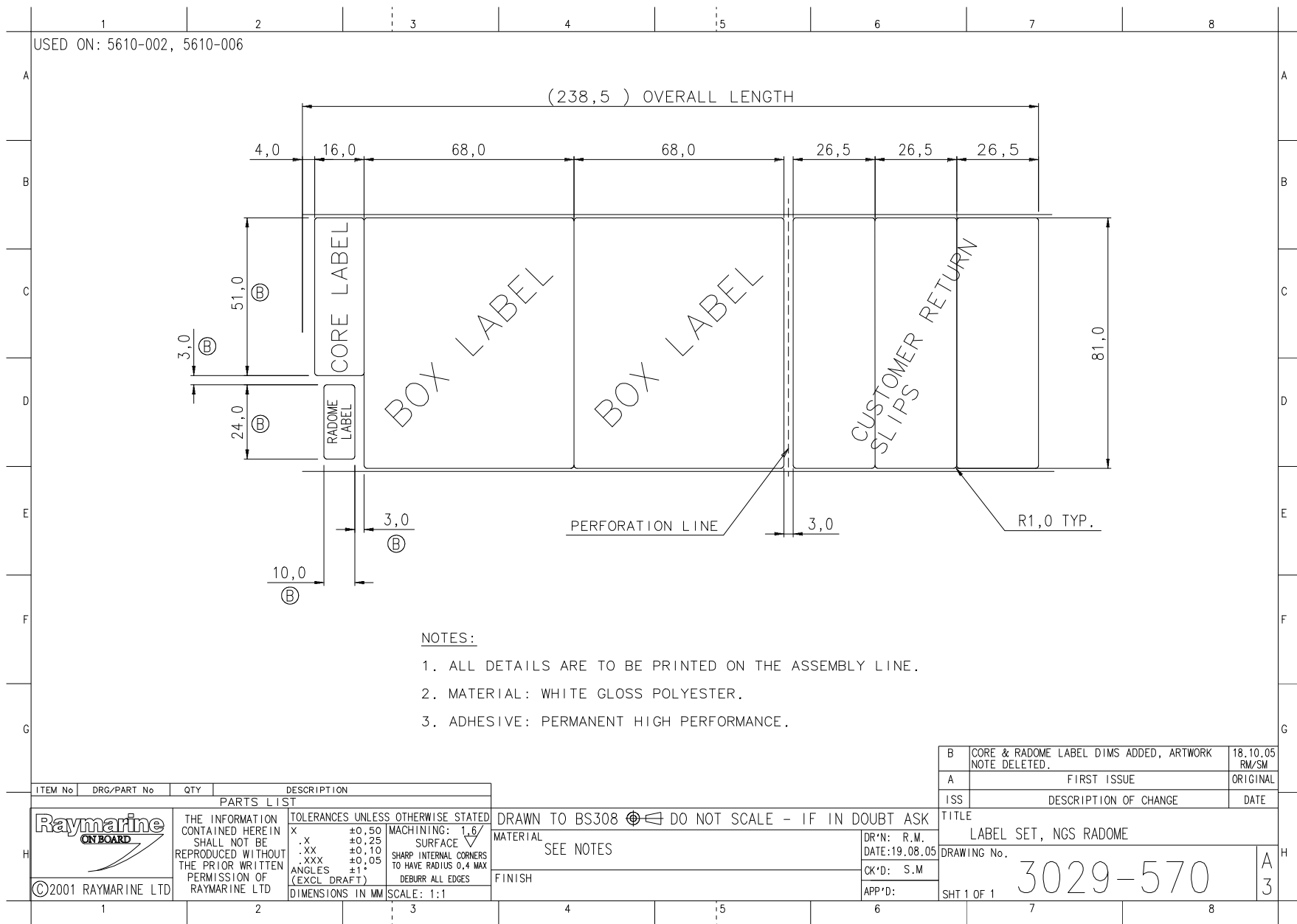
INDEX

Page No.	Description
3	Radome viewed from underside, showing positions of compliance and ratings labels.
4	Modulator cover showing position of part number and barcoded data label. Note: label shown is for a 2kW core - label size and positioning for 4kW core is identical.
5	Drawing of compliance label.
6	Drawing of Label Set. Comprises various labels which identify a specific radar.
7	Explanatory drawing, including facsimile of box label, for Label Set.
8	Drawing of Ratings label. Note outlined area for attachment of part/serial number label.









Label carries part number and core serial number and barcoding. Attached to modulator cover. See photograph above.



This label is identical to that shown on the left. Both are attached to the outer packaging of the product.

Carries part number and serial number. Label is positioned in outlined area on Ratings Label (See drawing 3029-560, below, and photograph above)

Three identical barcoded labels, which are inserted in the User Guide. They are used to mark the product and packaging in the event that it needs to be returned to the supplier for servicing or upgrade.

