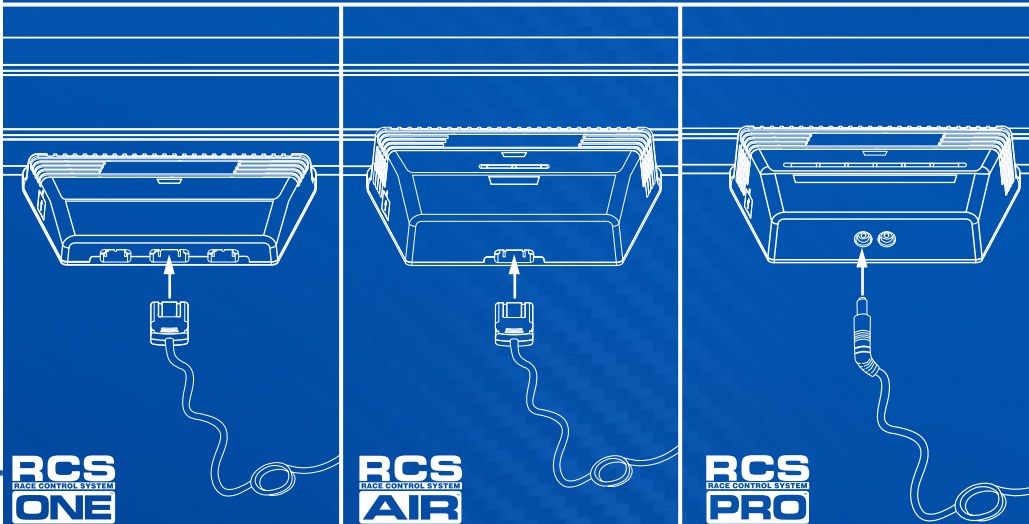


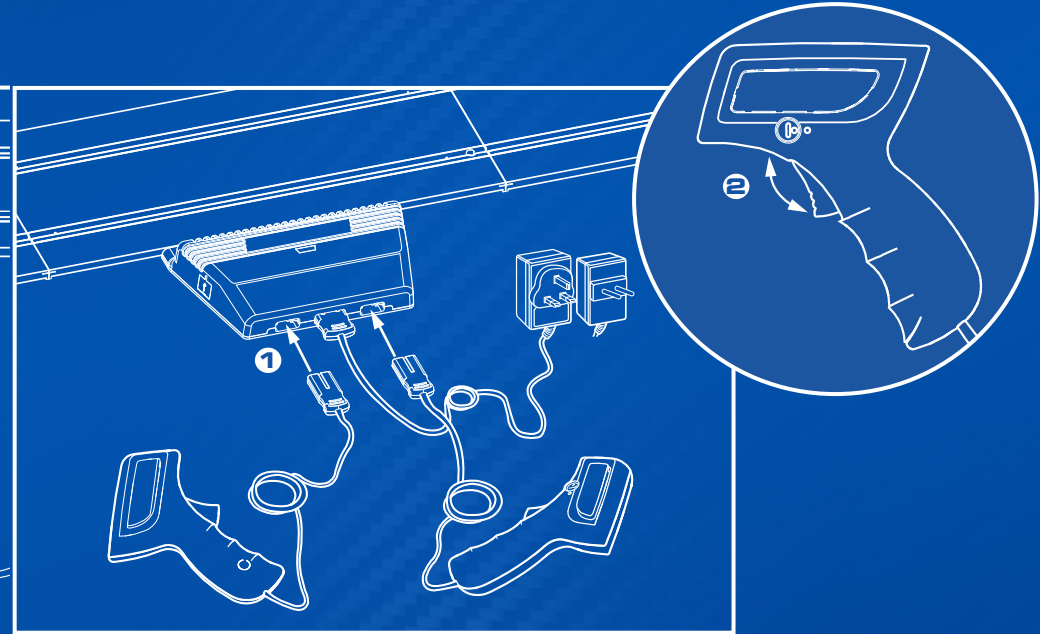
- ❶ Insert the rectangular plug or jack plug(s) into the Powerbase.
- ❷ Plug the transformer(s) into the wall and turn on.
- ❸ The powerbase power / Bluetooth LED will flash orange.



Wired Controllers



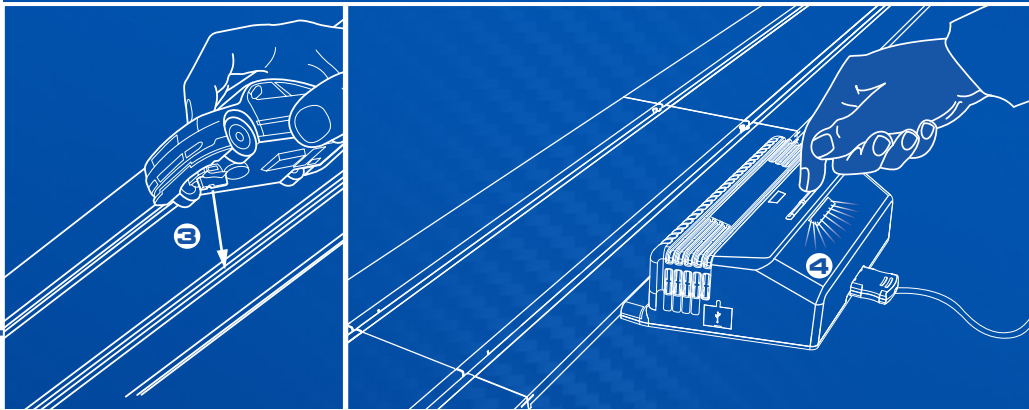
- ❶ Plug both controllers into the ports on the Powerbase.
- ❷ Test you have control of your cars by pressing the trigger.



Wireless Controllers



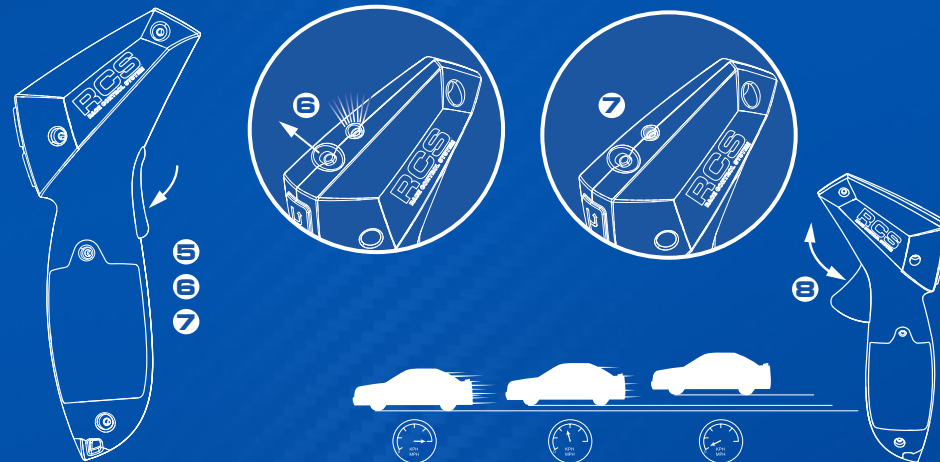
- ❶ Insert batteries (2 x AA) and check the hand controller powers on (green LED will flash when turned on for the first time).
- ❷ Turn off the controllers.
- ❸ Place only the car you want to assign to this controller on the track.
- ❹ Press binding button on the powerbase for the port you wish to connect to – LED will flash green to indicate binding mode.



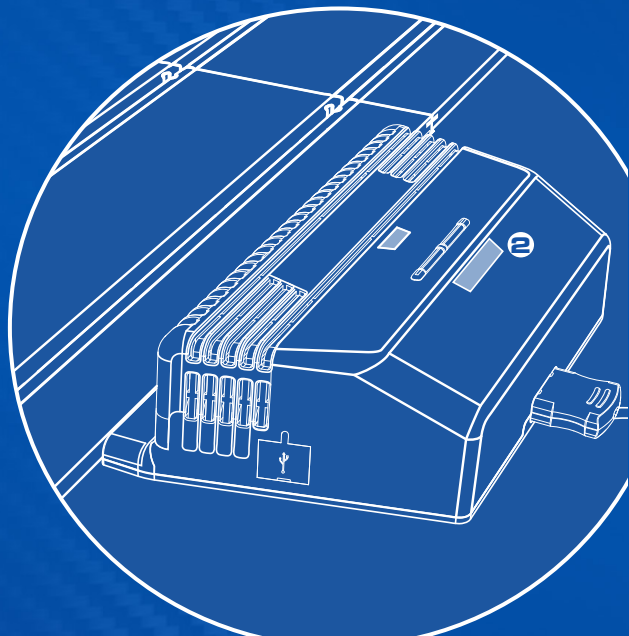
Wireless Controllers



- ❺ Fully depress and hold the trigger.
- ❻ Continue to hold the trigger, turn on the hand controller (LED will flash green)
- ❼ Continue to hold the trigger until LEDs on both devices go solid green.
- ❽ Release trigger and test you have control of your car.



- ① Open the App on your smart device and follow the on-screen instructions.
- ② When the power/bluetooth LED on the powerbase goes solid green, you are ready to race.



App Functionality

ONE

AIR

PRO

Racing modes

Quick start mode	✓	✓	✓
Drag racing	✓	✓	✓
Arcade mode		✓	✓
Practice	✓	✓	✓
Qualifying	✓	✓	✓
Tournament	✓	✓	✓
Grand Prix	✓	✓	✓
Endurance	✓	✓	✓
Pursuit game		✓	✓

In-race gameplay

Race start	✓	✓	✓
Yellow flag mode			✓
Jump start	✓	✓	✓
Start reaction times	✓	✓	✓
Lap counting	✓	✓	✓