

Tune-Up Procedure

This exhibit contains a copy of the Tune-Up Procedures for this equipment. The procedures will appear in a similar format in the manual which accompanies the Radio Service Software used for adjustment of this equipment.

A diagram is contained in this exhibit which shows the recommended test equipment required for adjusting this equipment and the means of connecting it to the unit being adjusted.

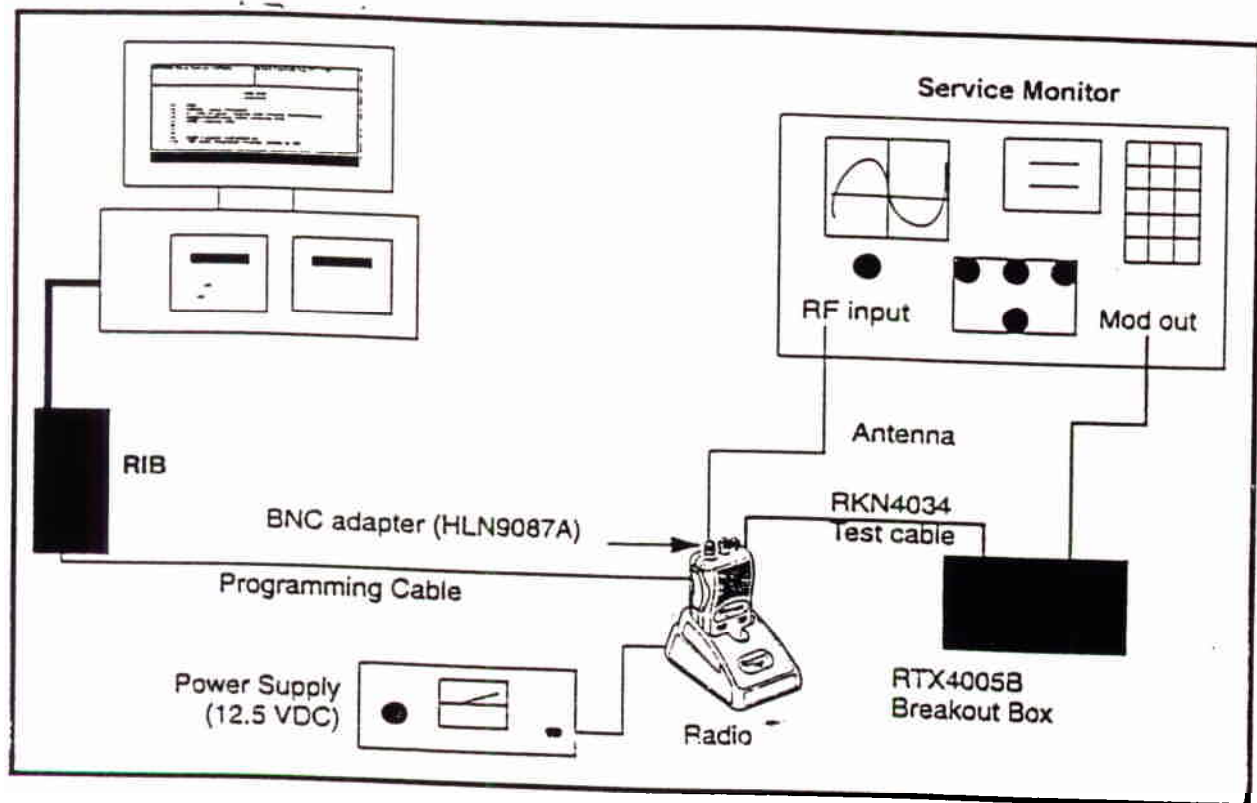
Tune-Up Procedure (continued)**List of Recommended Test Equipment for Servicing**

<u>Instrument</u>	<u>Recommended Type</u>	<u>Application</u>
RF Signal Generator*	HP 8656B or equivalent	Receiver Measurements
Modulation Analyzer*	HP 8901B or equivalent	Frequency and Deviation Measurements
Audio Analyzer*	HP 8903A or equivalent	Receiver Measurements
Power Meter*	HP 438A or equivalent	Transmitter Power Output
Power Sensor*	HP 8482A or equivalent	Transmitter Power Output
DC Power Supply	0 - 15 volts at 10 amps	
Attenuator Pad Measurements	50 ohms, 50 watts 30dB	Transmitter
DC Ammeter	30mA to 20 Amps	Current Drain Measurements
Audio Interface and Speaker Load	RTX4005B Test Box	Receiver and Transmitter Audio Measurements

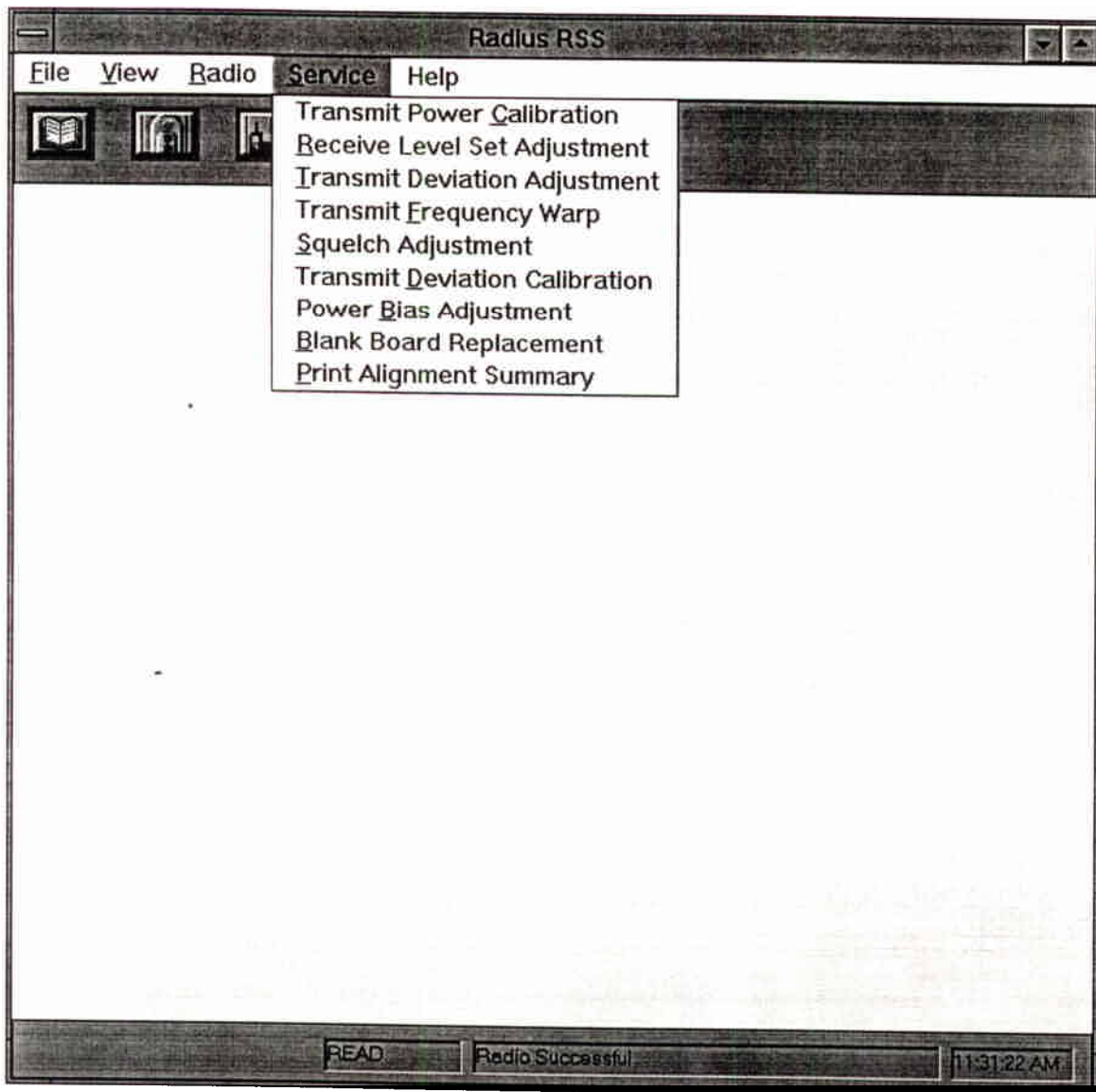
*These items can be replaced by a Motorola 2000-Series Communications Systems Analyzer.

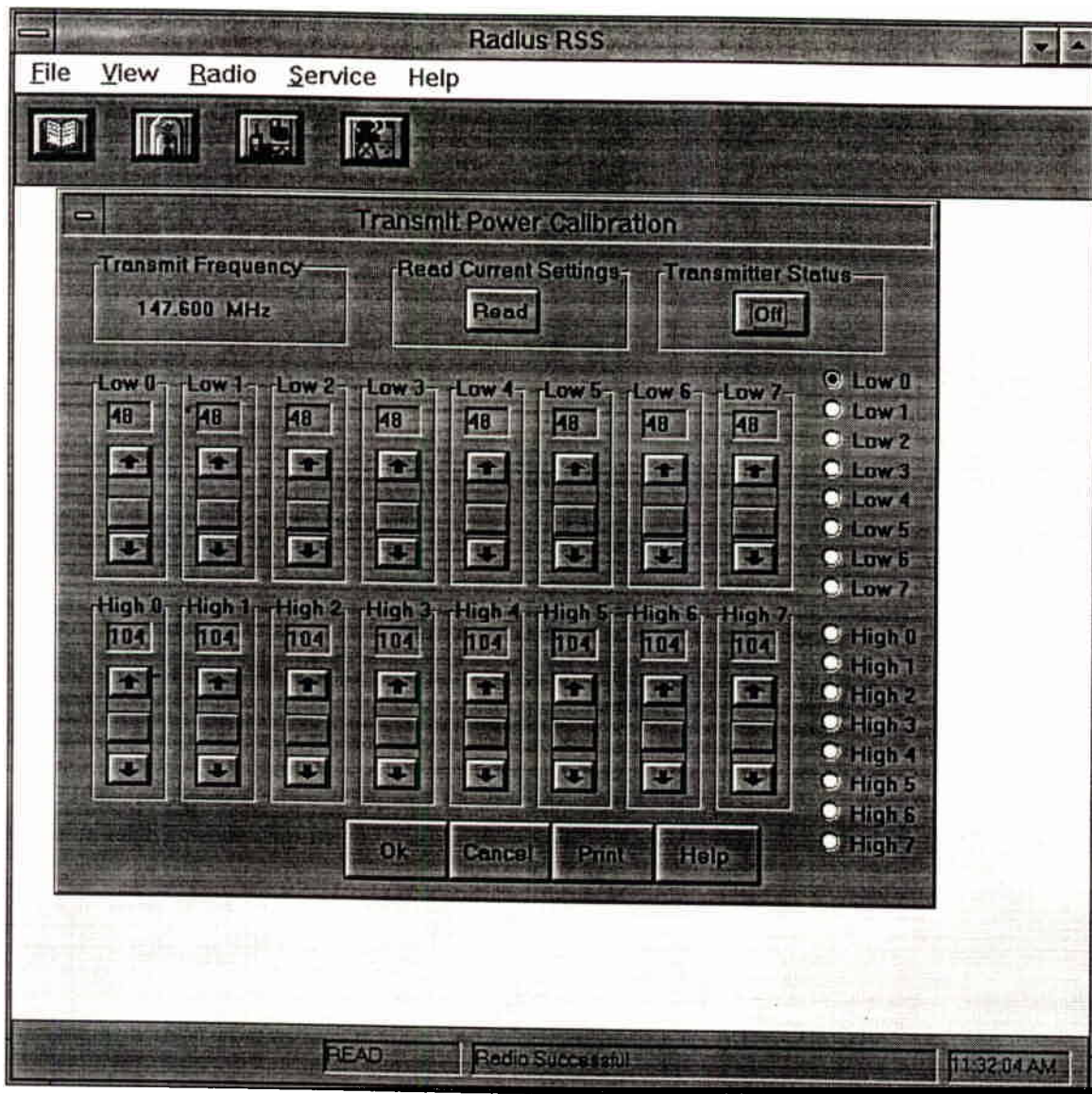
Configuring the Alignment and Calibration Equipment

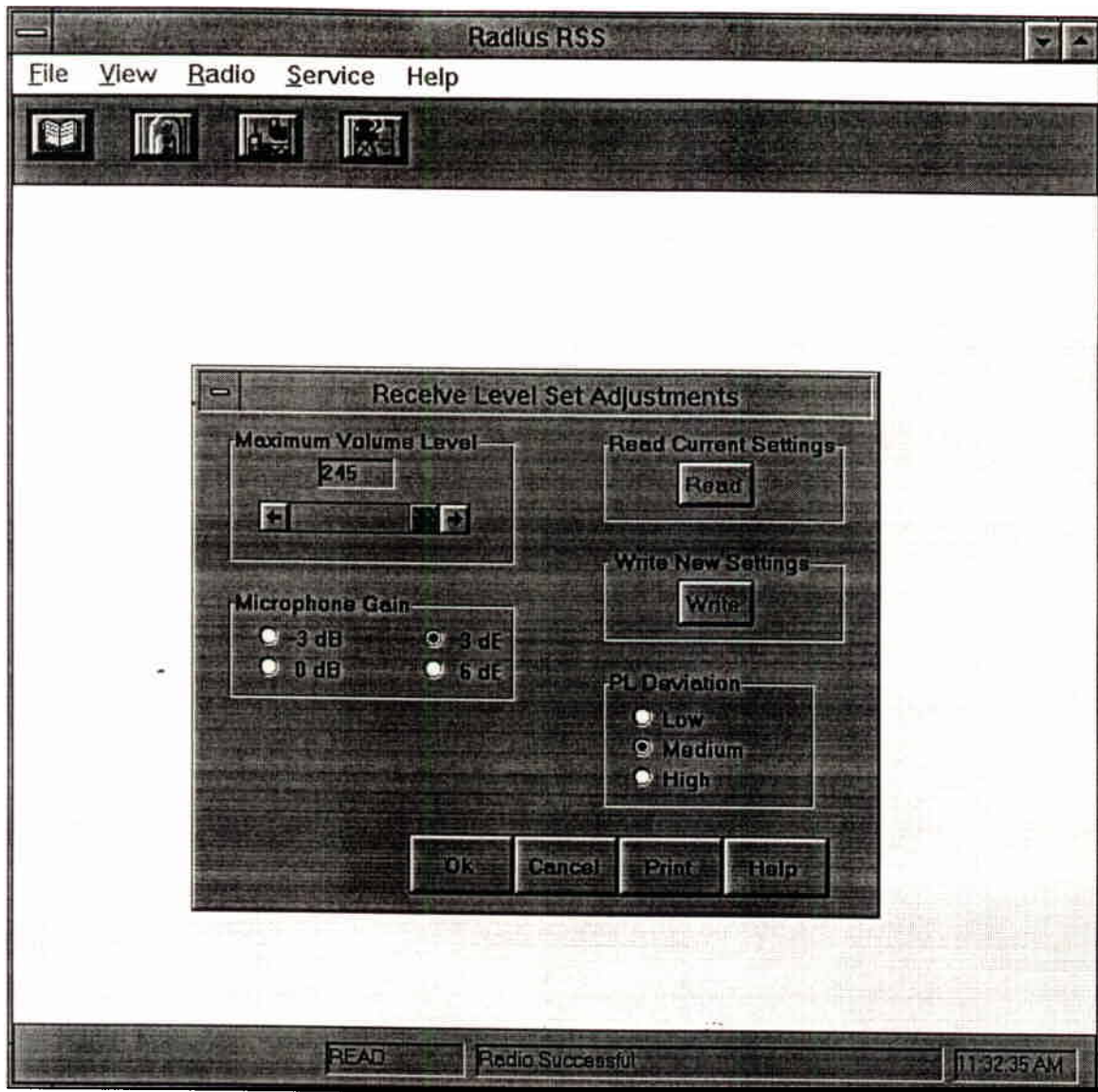
The frequency meter, deviation meter and power meter are all connected to the antenna connector of the radio depending on which tests are being performed. The audio generator is connected to the RIB to radio cable at the junction box with a BNC connector.

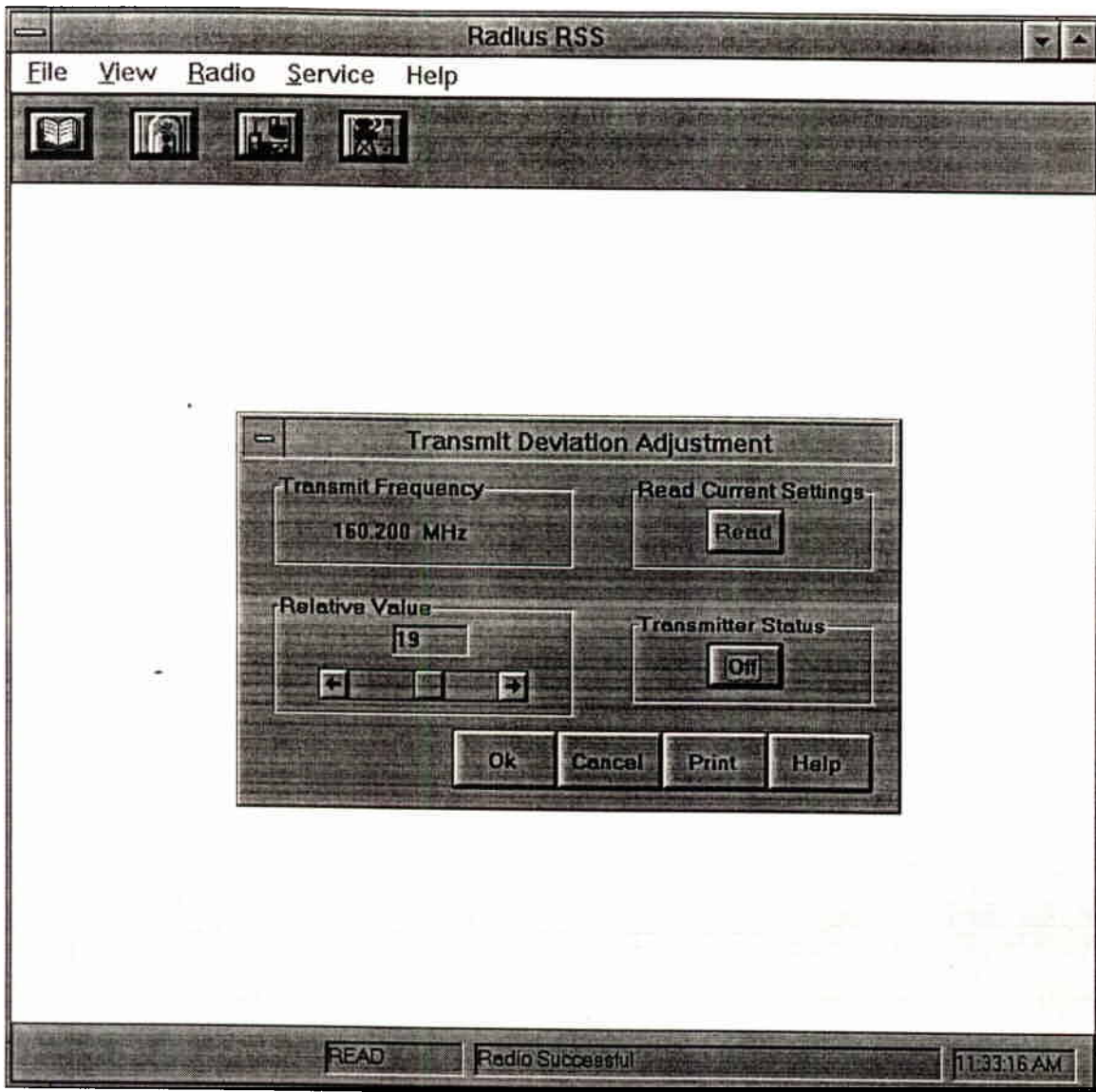


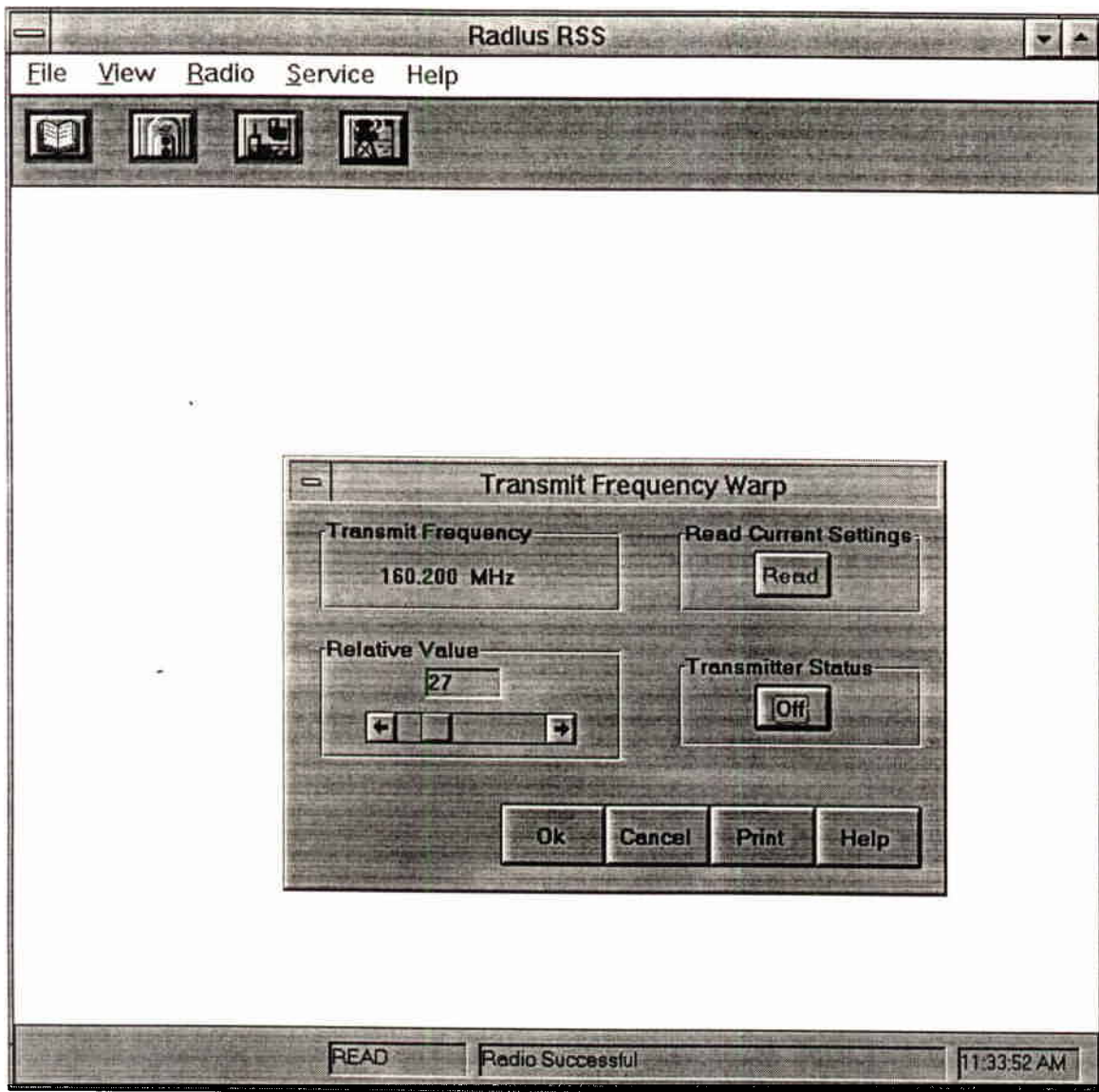
Test Equipment Configuration

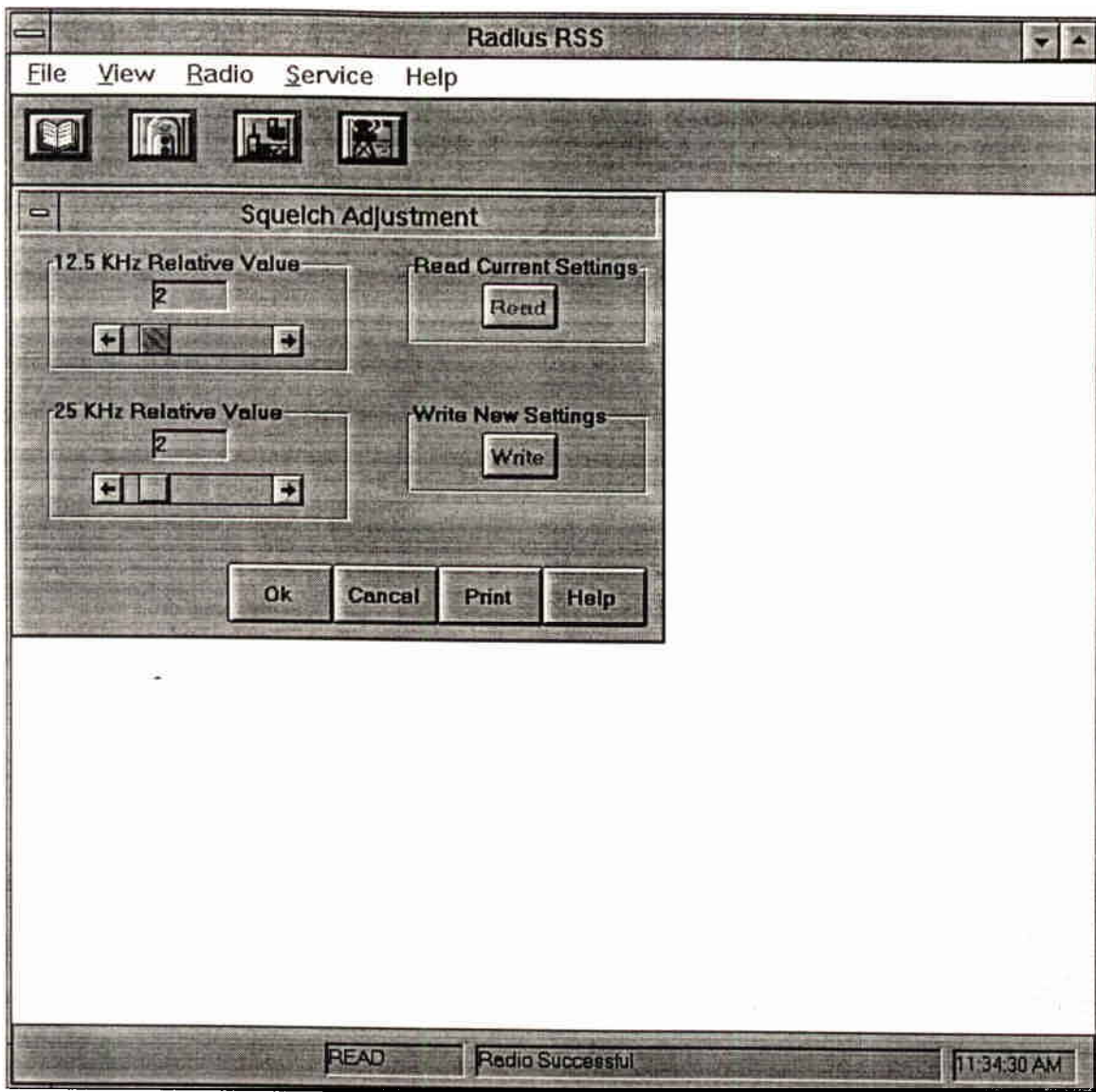


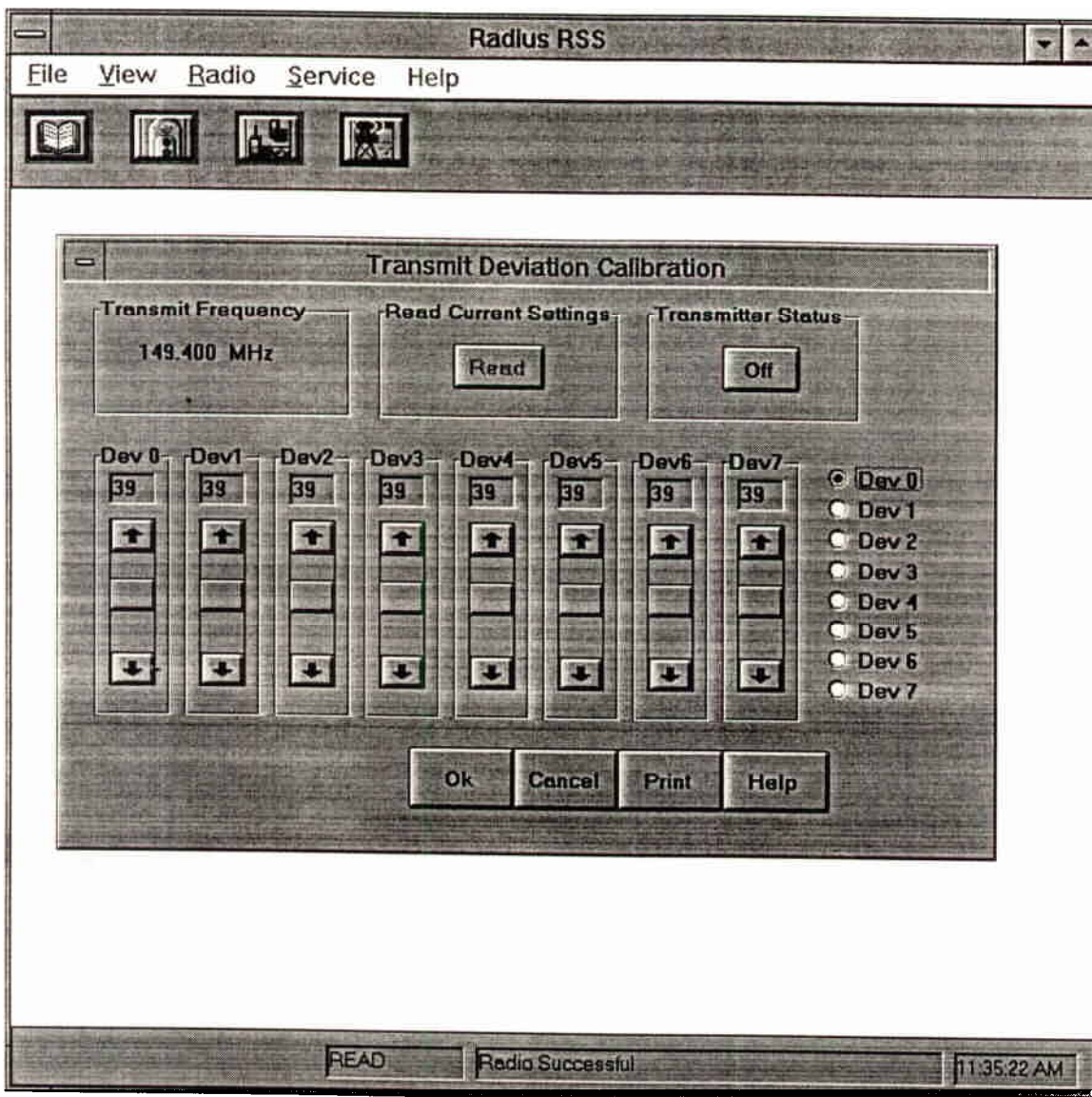


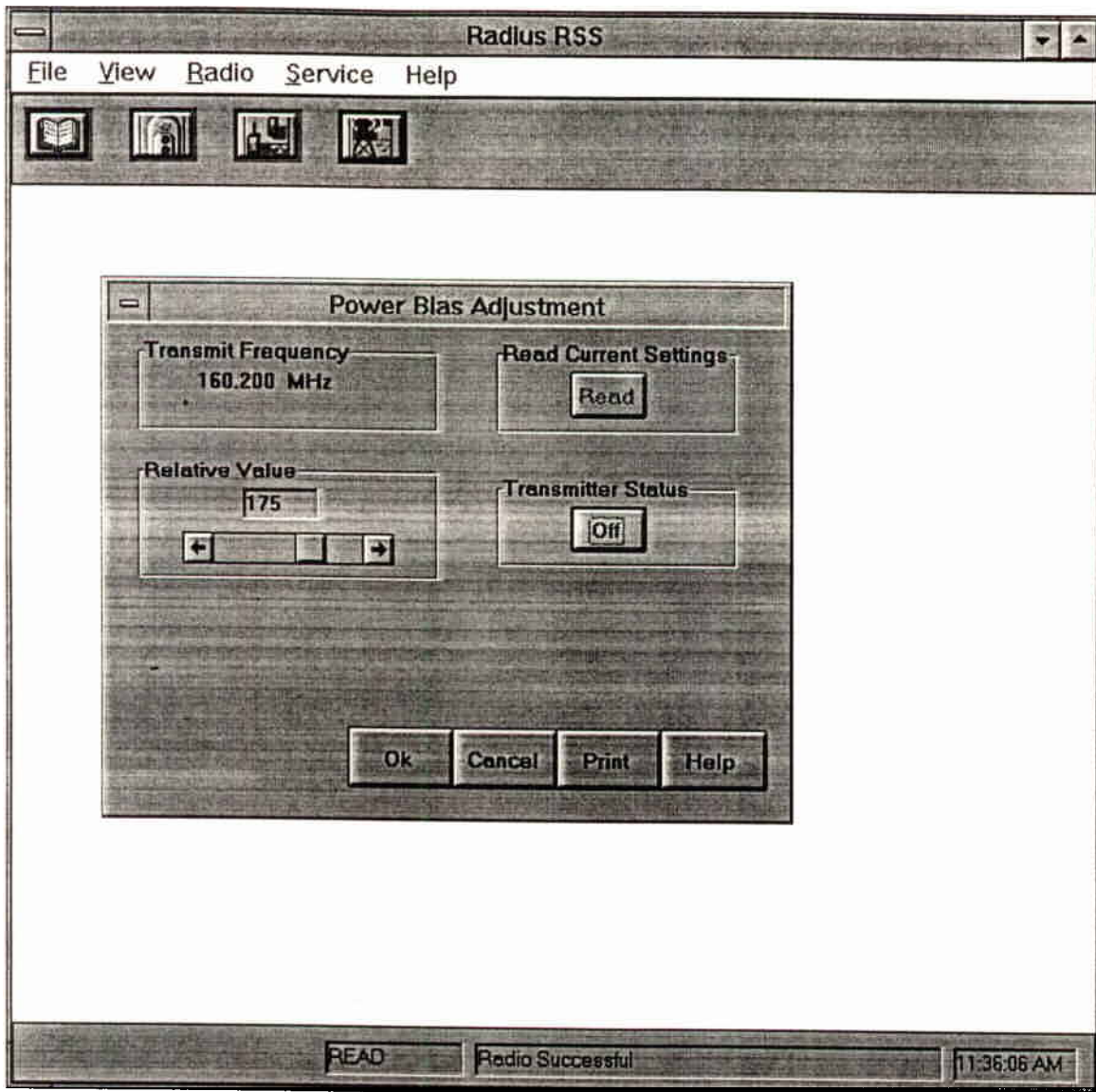












Radius RSS

File View Radio Service Help

Blank Board Initialization

Model Number P93ZPC90A2AA	Number of Modes 2
Model Name Radius PT225	Watts 5 Watts
Frequency Range 150-174 KHz	Panel Number 0
Serial Number PR0FWU0387	

Ok Cancel Print Help

11:41:32 AM