

Photo 7

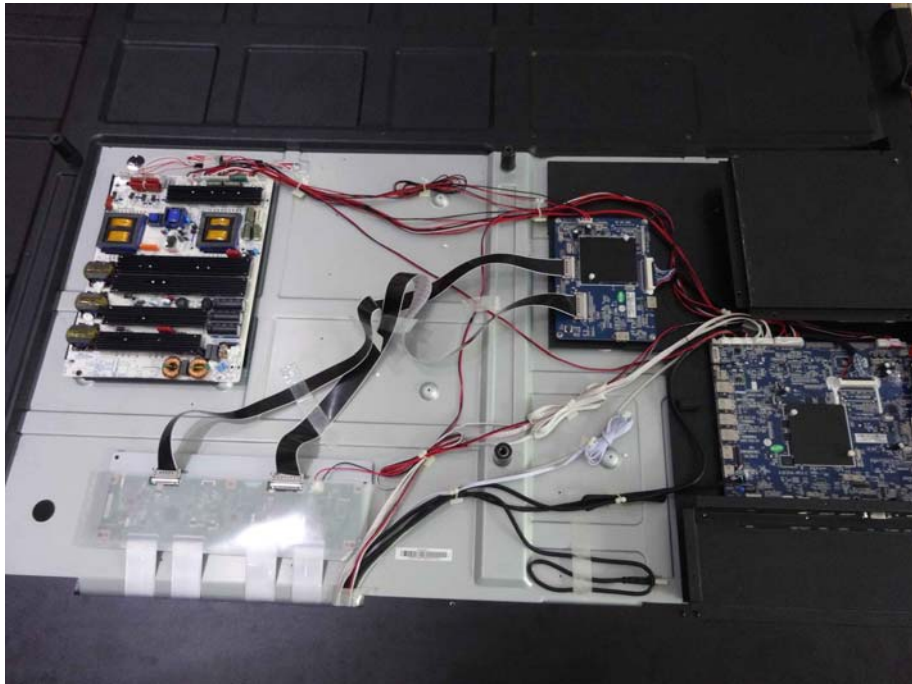


Photo 8

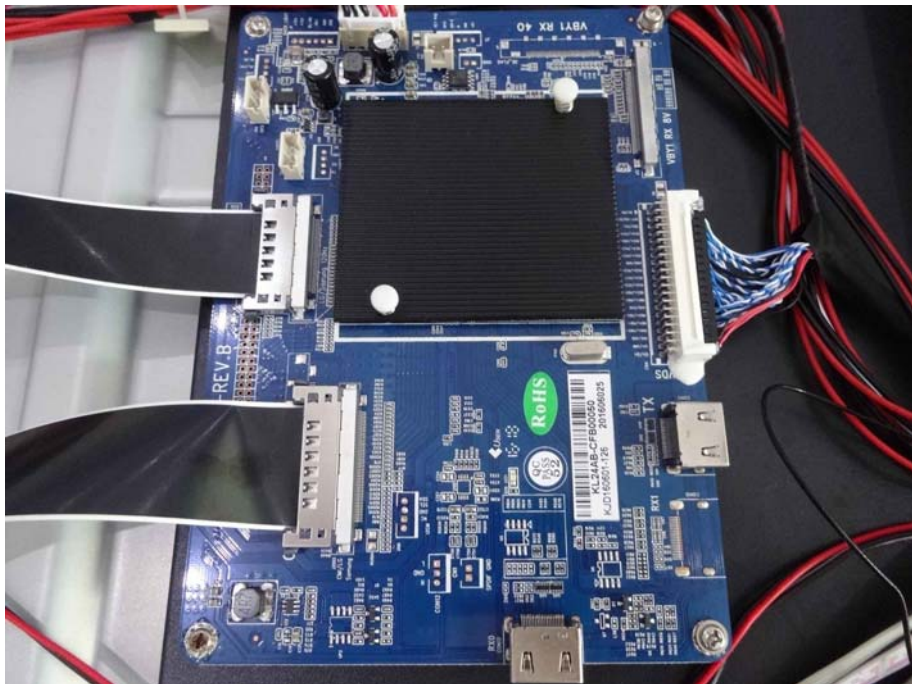
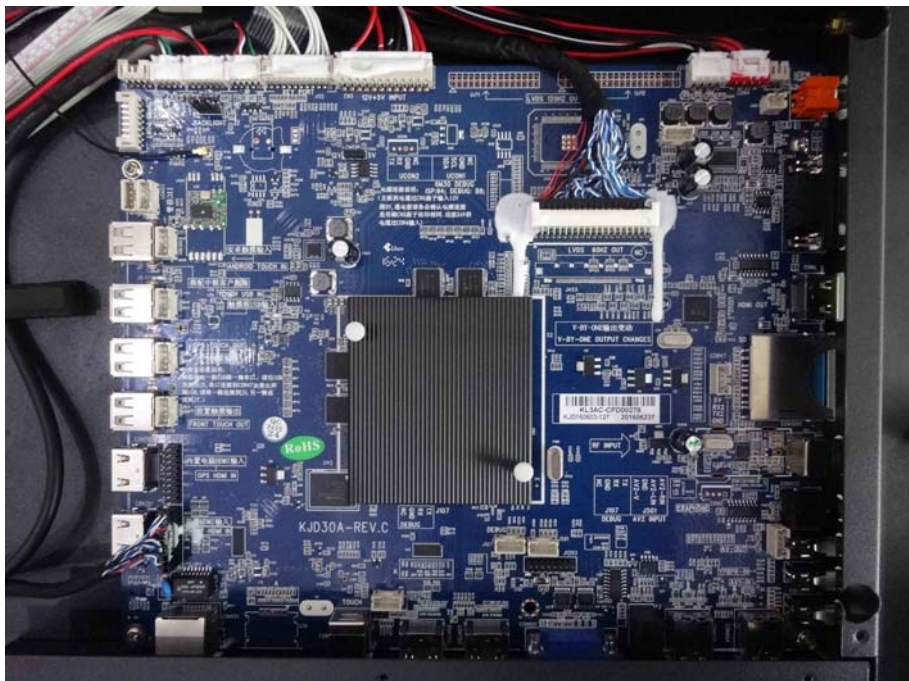


Photo 9



Photo 10





A close-up photograph of the PCB showing the location of the WIFI antenna. A red rectangular box highlights a small component on the right side of the board. An arrow points from the text "WIFI antenna" to this component. The PCB also features various connectors, including USB ports and a front touch input, and is marked with "RoHS" and "QC PASS 24".

Photo 13

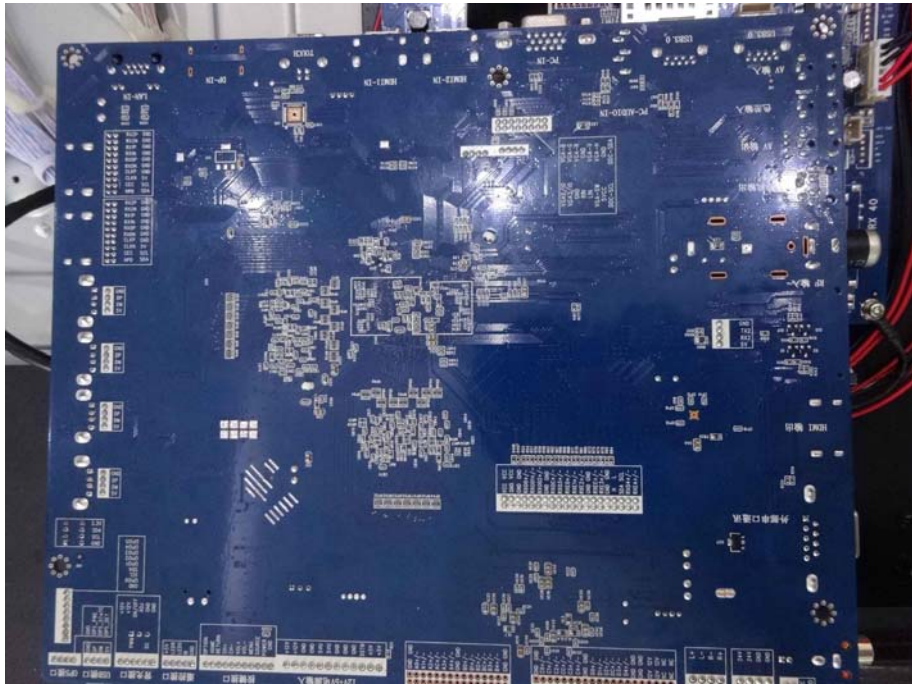


Photo 14

