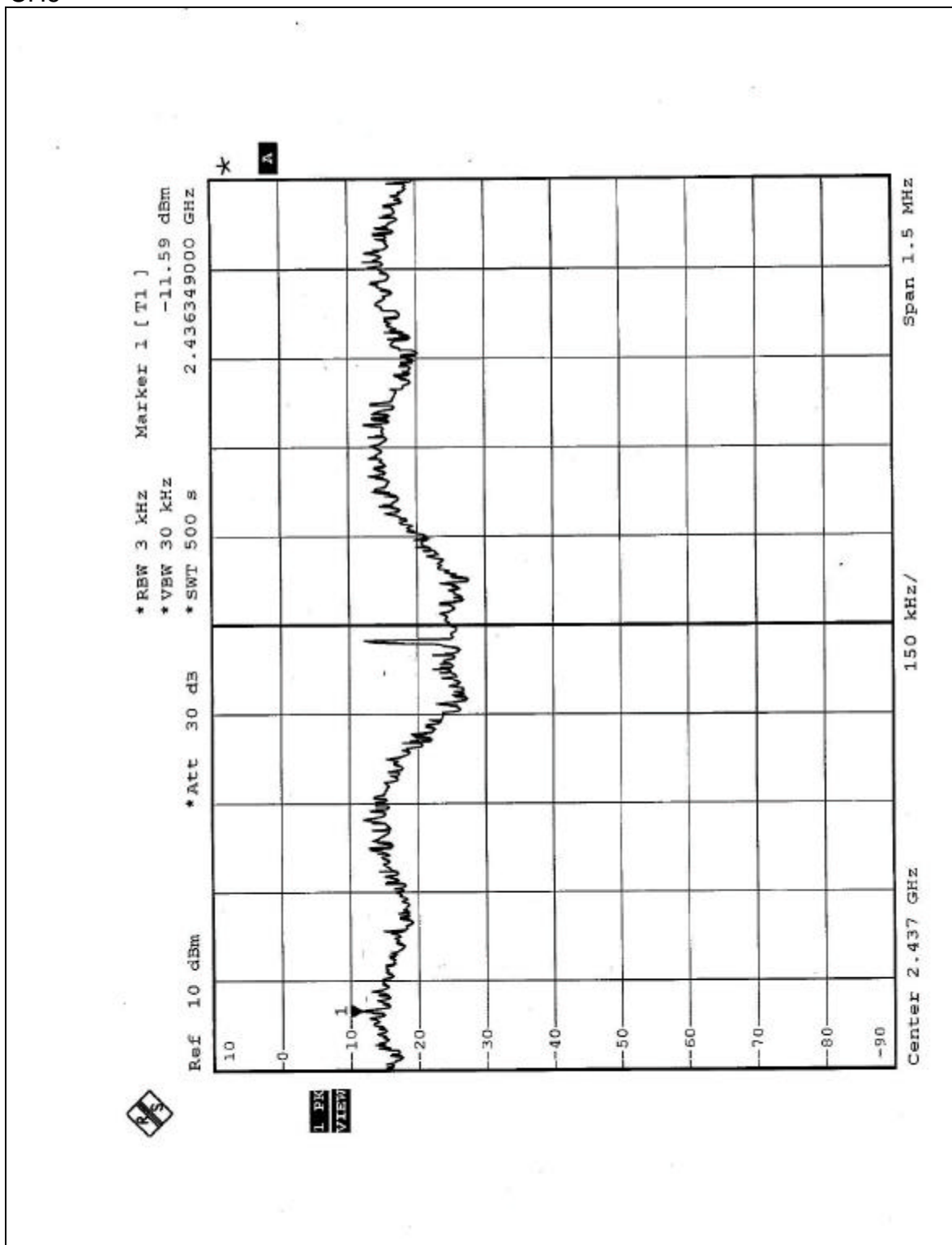
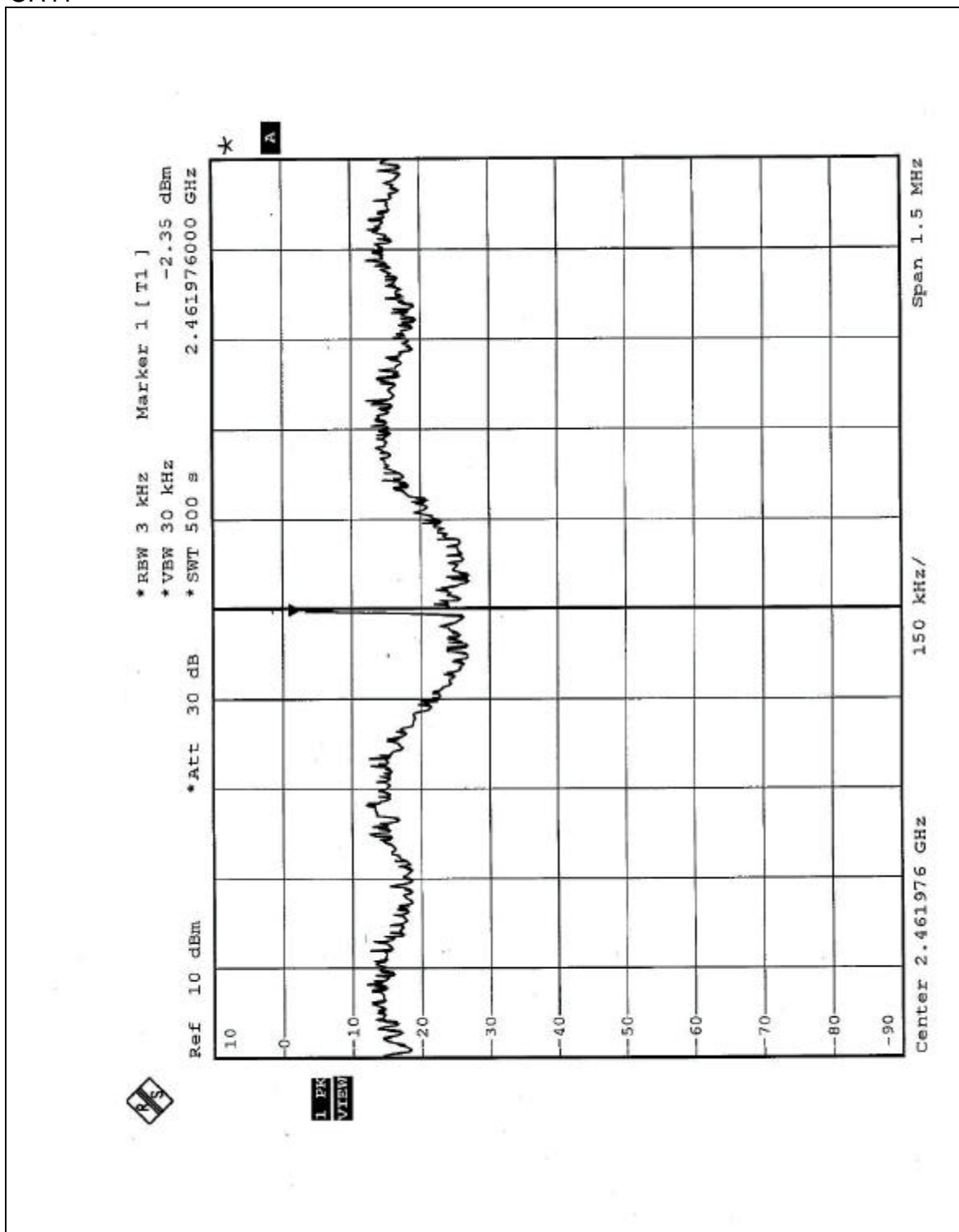


CH6



CH11



## 4.6 BAND EDGES MEASUREMENT

### 4.6.1 LIMITS OF BAND EDGES MEASUREMENT

Below -20dB of the highest emission level of operating band (in 100KHz Resolution Bandwidth).

### 4.6.2 TEST INSTRUMENTS

Description & Manufacturer	Model No.	Serial No.	Calibrated Until
R&S SPECTRUM ANALYZER	FSEK30	100049	Aug. 12, 2004

**NOTE:** The calibration interval of the above test instruments is 12 months and the calibrations are traceable to NML/ROC and NIST/USA.

### 4.6.3 TEST PROCEDURE

The transmitter output was connected to the spectrum analyzer via a low loss cable. Set both RBW and VBW of spectrum analyzer to 100kHz for CCK technique and RBW = 1MHz and VBW = 300Hz for OFDM technique with suitable frequency span including 100MHz bandwidth from band edge. The band edges were measured and recorded.

### 4.6.4 DEVIATION FROM TEST STANDARD

No deviation



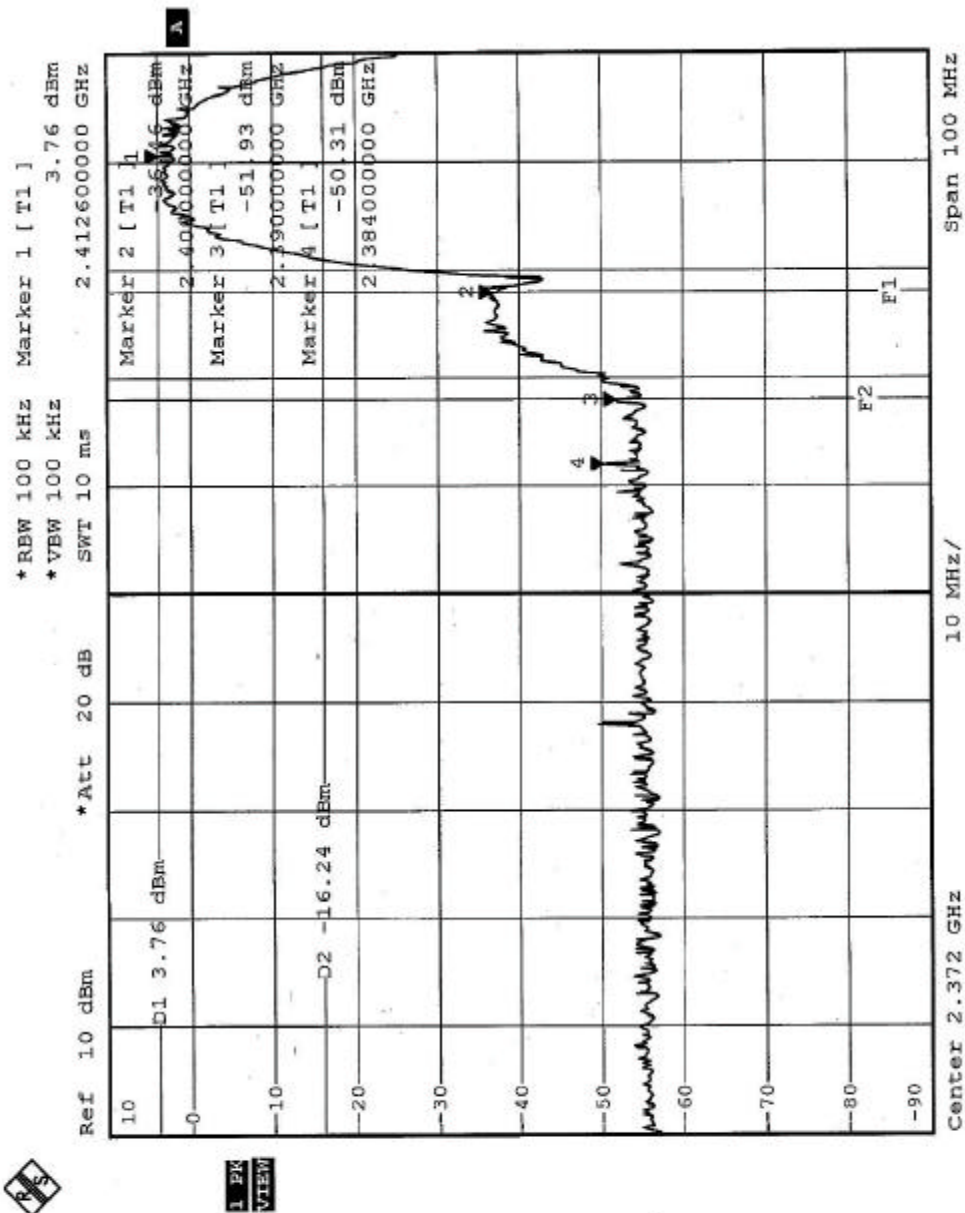
#### 4.6.5 EUT OPERATING CONDITION

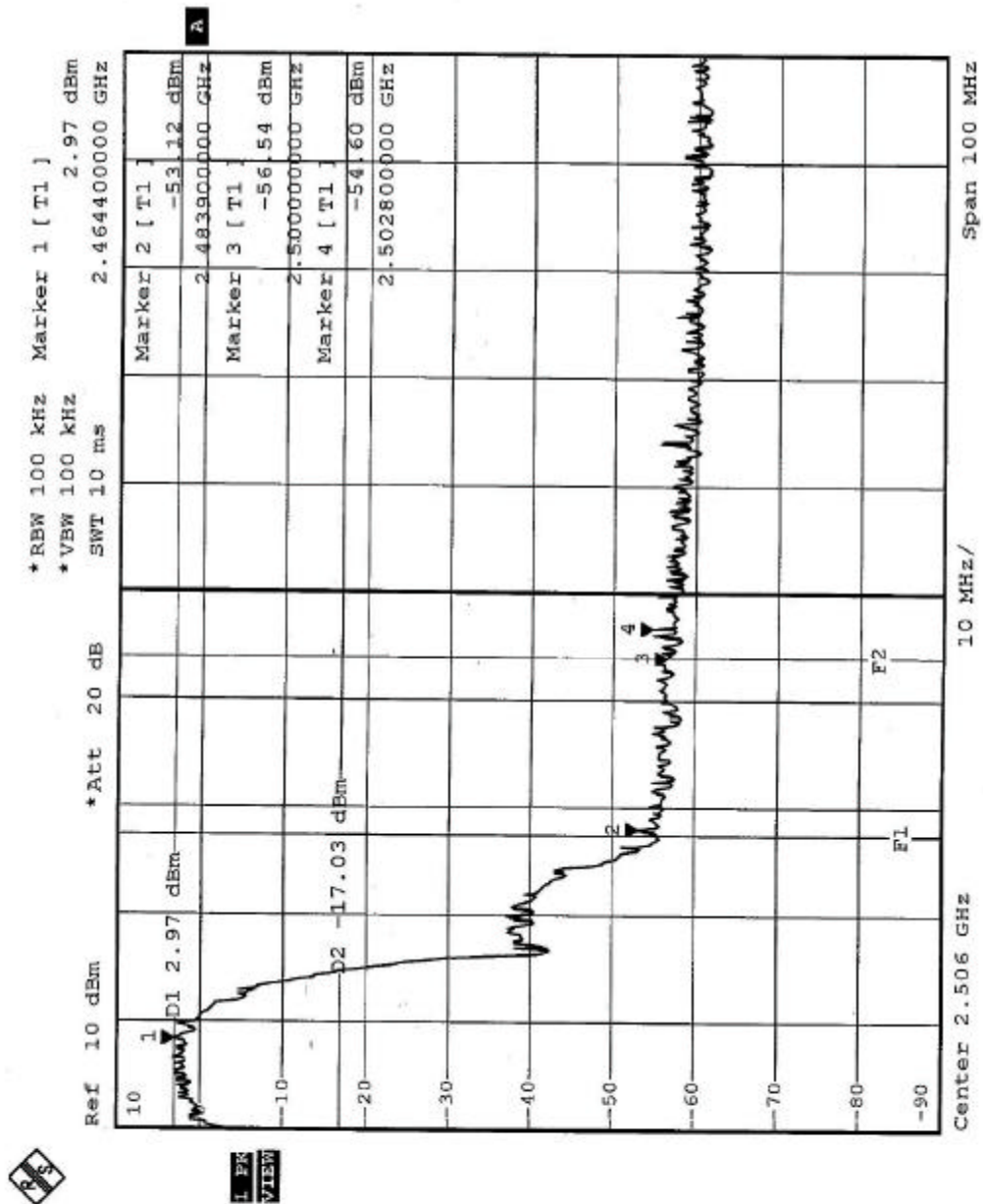
Same as Item 4.3.6

#### 4.6.6 TEST RESULTS

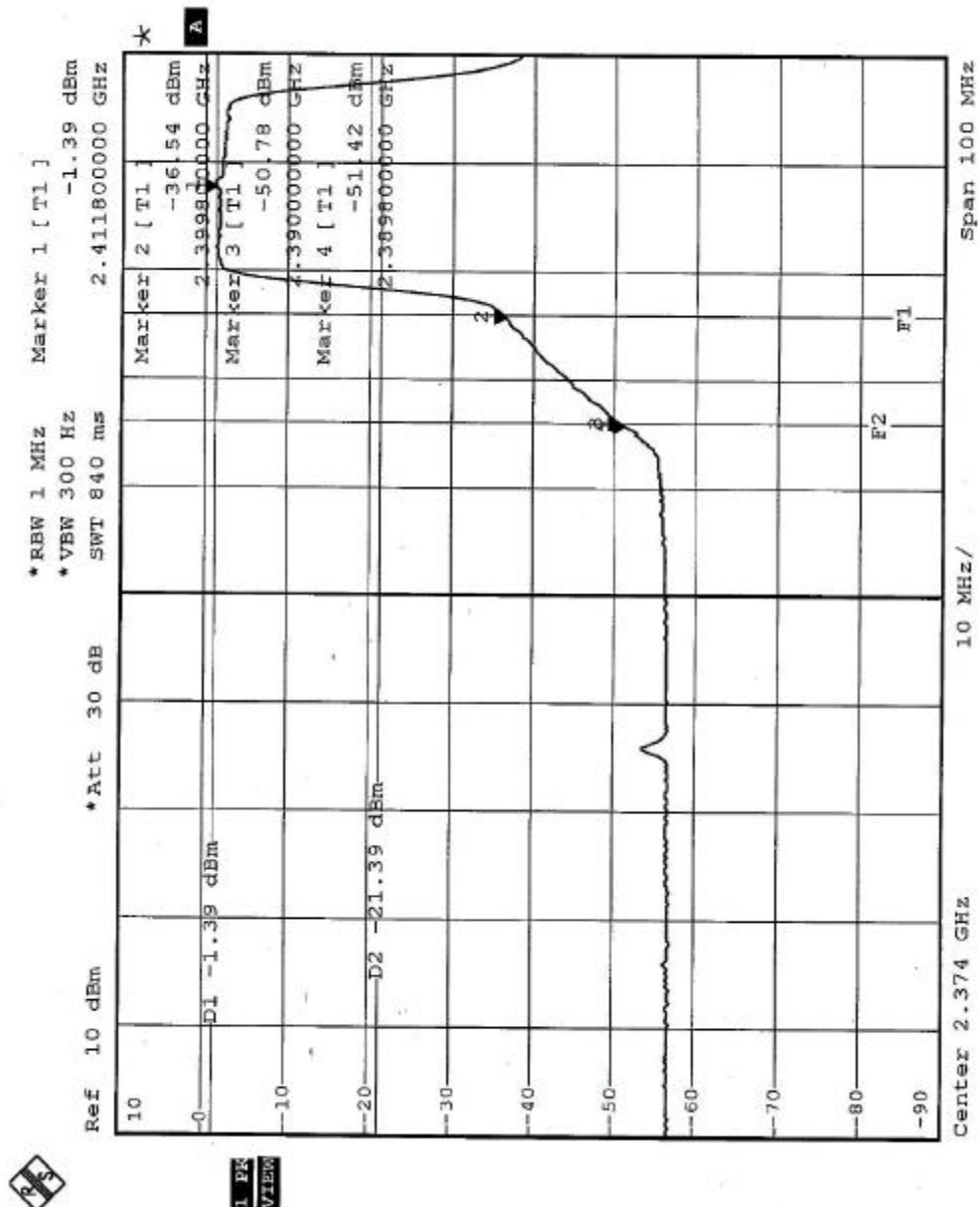
The spectrum plots are attached on the following 2 pages. D2 line indicates the highest level, D1 line indicates the 20dB offset below D2. It shows compliance with the requirement in part 15.247(C).

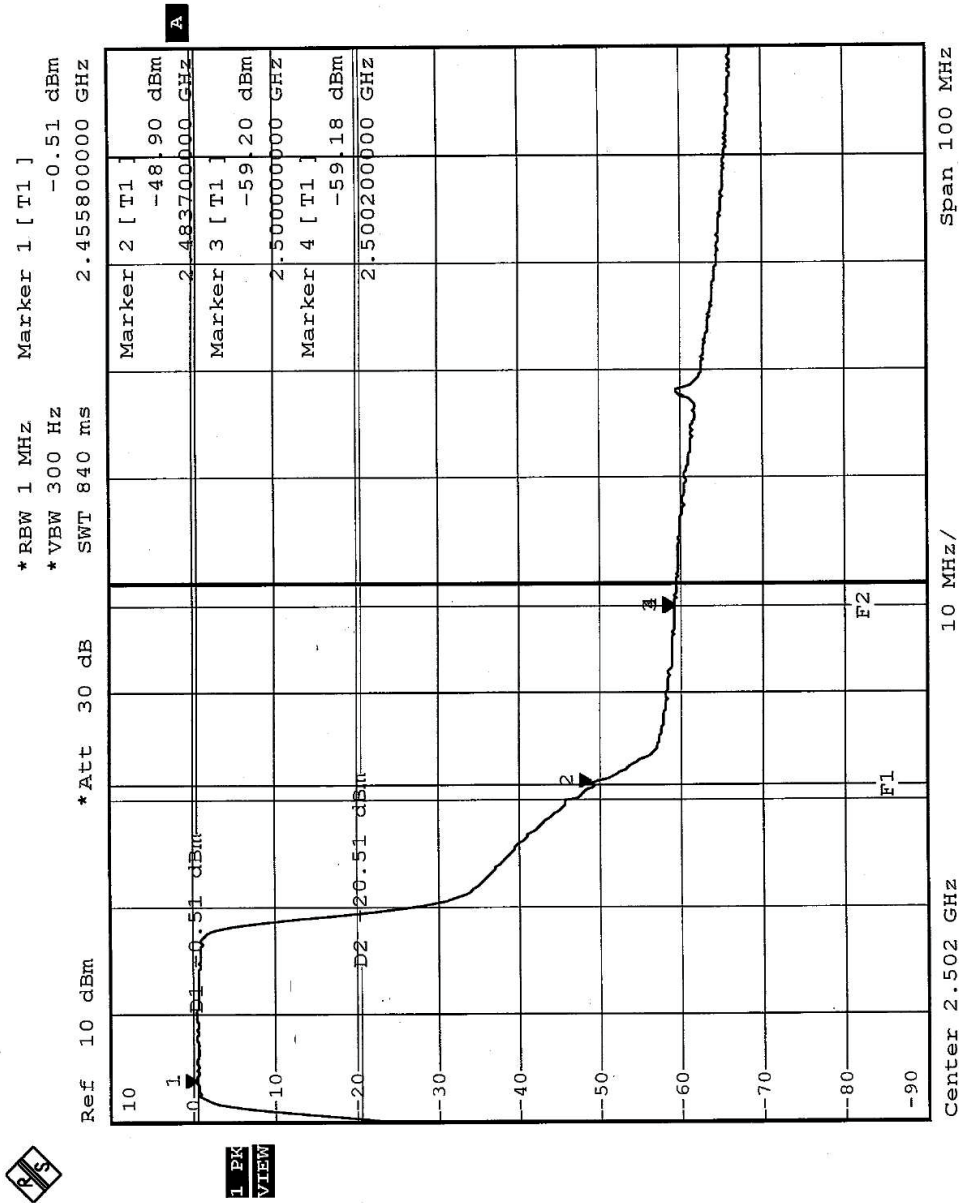
**NOTE 1:** The band edge emission plot of the CCK technique on the following two pages show 54.07dB/56.09dB delta between carrier maximum power and local maximum emission in restrict band (2.3840GHz/2.4839GHz). The emission of carrier strength list in the test result of channel 1 and 11 at the item 4.2.7 are 101.70dBuV/m and 101.20dBuV/m, so the maximum field strength in restrict band is  $101.70 - 54.07 = 47.63$ dBuV/m which is under 54dBuV/m limit.





**NOTE 2:** The band edge emission plot of the OFDM technique on the following two pages show 49.39dB/48.39dB delta between carrier maximum power and local maximum emission in restrict band (2.3900GHz/2.4837GHz). The emission of carrier strength list in the test result of channel 1 and 11 at the item 4.2.7 are 99.80dBuV/m and 100.30dBuV/m, so the maximum field strength in restrict band is  $100.3 - 48.39 = 51.91$  dBuV/m which is under 54dBuV/m limit.









## **4.7 ANTENNA REQUIREMENT**

### **4.7.1 STANDARD APPLICABLE**

For intentional device, according to FCC 47 CFR Section 15.203, an intentional radiator shall be designed to ensure that no antenna other than that furnished by the responsible party shall be used with the device.

And according to FCC 47 CFR Section 15.247 (b), if transmitting antennas of directional gain greater than 6dBi are used, the power shall be reduced by the amount in dB that the directional gain of the antenna exceeds 6dBi.

### **4.7.2 ANTENNA CONNECTED CONSTRUCTION**

The antenna type used in this product is Dipole Antenna without antenna connector. The maximum Gain of this antenna is only 2dBi.

## 5 PHOTOGRAPHS OF THE TEST CONFIGURATION

### CONDUCTED EMISSION TEST



## RADIATED EMISSION TEST





## 6 INFORMATION ON THE TESTING LABORATORIES

We, ADT Corp., were founded in 1988 to provide our best service in EMC and Safety consultation. Our laboratories are accredited and approved by the following approval agencies according to ISO/IEC 17025, Guide 25 or EN 45001:

<b>USA</b>	FCC, NVLAP
<b>Germany</b>	TUV Rheinland
<b>Japan</b>	VCCI
<b>New Zealand</b>	MoC
<b>Norway</b>	NEMKO
<b>R.O.C.</b>	BSMI, DGT, CNLA

Copies of accreditation certificates of our laboratories obtained from approval agencies can be downloaded from our web site:

[www.adt.com.tw/index.5/phtml](http://www.adt.com.tw/index.5/phtml).

If you have any comments, please feel free to contact us at the following:

**Lin Kou EMC Lab:**

Tel: 886-2-26052180

Fax: 886-2-26052943

**Hsin Chu EMC Lab:**

Tel: 886-35-935343

Fax: 886-35-935342

**Lin Kou Safety Lab:**

Tel: 886-2-26093195

Fax: 886-2-26093184

**Lin Kou RF&Telecom Lab**

Tel: 886-3-3270910

Fax: 886-3-3270892

**Email:** [service@mail.adt.com.tw](mailto:service@mail.adt.com.tw)

**Web Site:** [www.adt.com.tw](http://www.adt.com.tw)

The address and road map of all our labs can be found in our web site also.