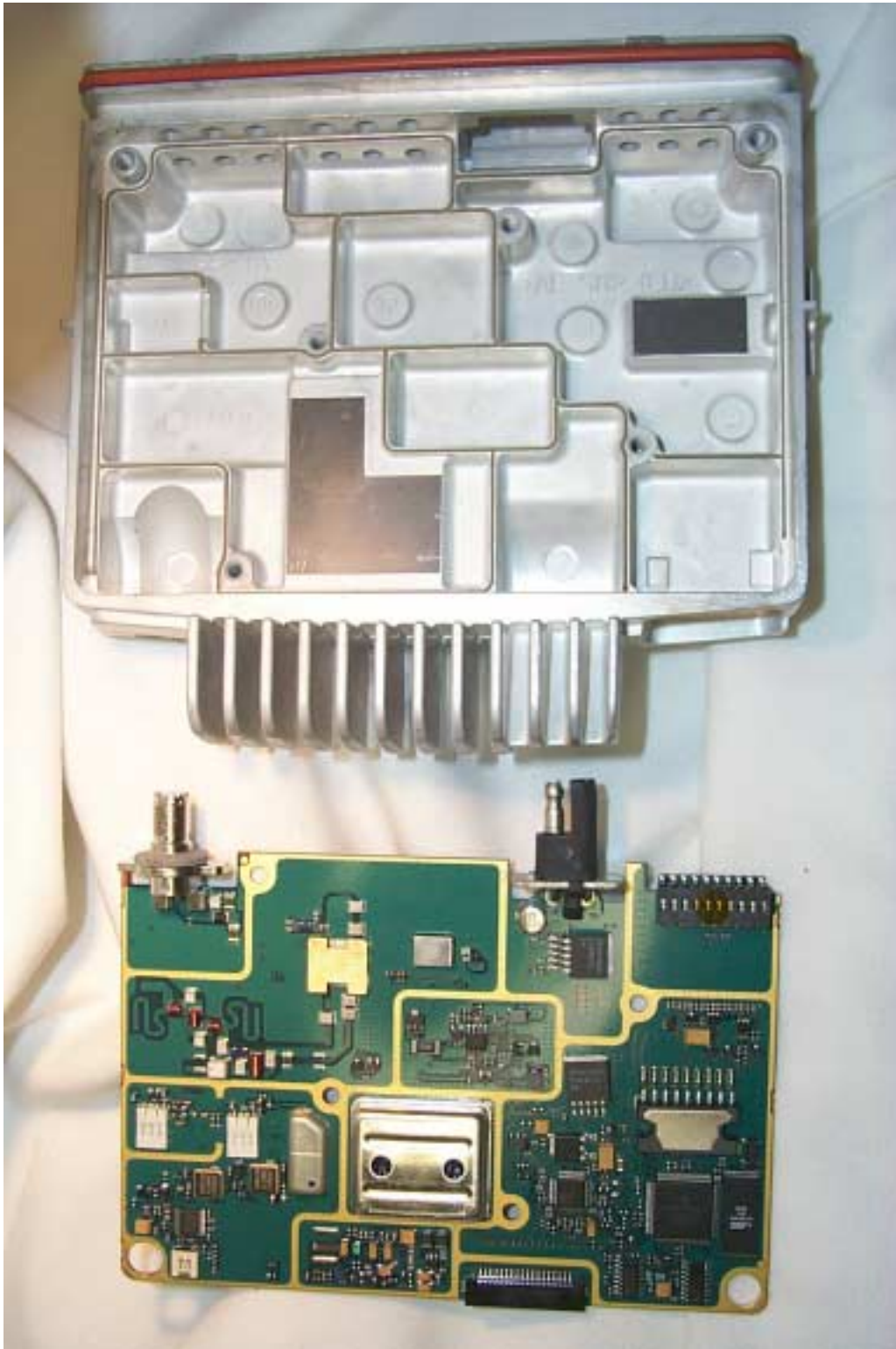


**TOP VIEW WITH CHASSIS TOP COVER REMOVED
(MATING SURFACES OF TOP COVER AND CIRCUIT BOARD IN CHASSIS ARE SHOWN)**



**TOP VIEW WITH CIRCUIT BOARD REMOVED FROM CHASSIS
(MATING SURFACES OF CIRCUIT BOARD AND CHASSIS ARE SHOWN)**