

NOTICE TO PERSONS RECEIVING THIS DRAWING AND/OR TECHNICAL INFORMATION:

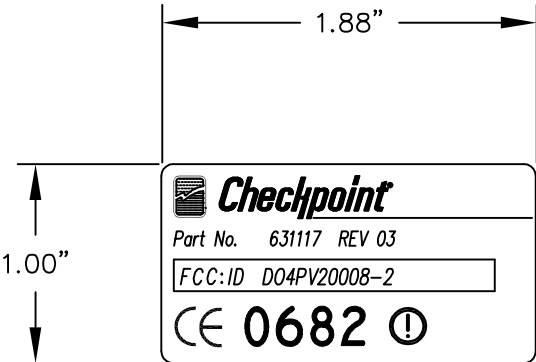
Checkpoint Systems claims proprietary rights to the material disclosed hereon. This drawing and/or technical information is issued in confidence for engineering information only and may not be reproduced or used to manufacture anything shown or referred to hereon without direct written permission from Checkpoint Systems to the user. This drawing and/or technical information is the property of Checkpoint Systems and is loaned for mutual assistance, to be returned when its purpose has been served.

THIS DRAWING AND/OR TECHNICAL INFORMATION IS THE PROPERTY OF CHECKPOINT SYSTEMS, INC.

NO DEVIATION OF THIS DRAWING WILL BE ACCEPTED UNLESS APPROVED BY CHECKPOINT SYSTEMS ENGINEERING DEPARTMENT.

REVISIONS


LEVEL	DESCRIPTION	DATE	APPROVED
00	ECN6895		C.WAPLES



This device complies with FCC Rules Part 15. Operation is subject to the following two conditions: (1) This device may not cause harmful interference and (2) this device must accept any interference that may be received, including interference that may cause undesired operation.

Note:

- 1. All lettering to be black.

		UNLESS OTHERWISE SPECIFIED TOLERANCES ON: .XXX ±.005 .XX ±.01 FRACTIONS ±1/2 ANGLES ±1/2° FLATNESS WITHIN ±1/2° BREAK ALL CORNERS AND EDGES REMOVE BURRS .015 MAX.	©1991 CHECKPOINT SYSTEMS, INC.		 Checkpoint®		
			DRAWN	R.BLASKO	DATE	03/16/01	LABEL, AGENCY PV2000 8.2MHz
			CHECKED	B.RICHIE	03/16/01		
			APPROVED				
631117	133303	MATERIAL			SIZE A	542725	
NEXT ASSY	USED ON	FINISH			SCALE: 1/1	SHEET 1 OF 1	
APPLICATION							