

Figure 5  
Internal View (Removed Back Cover)



Figure 6  
Internal View (Removed Metal Cover of Main Board & Power Board)





Figure 7  
Internal View (Main Board & Power Board)

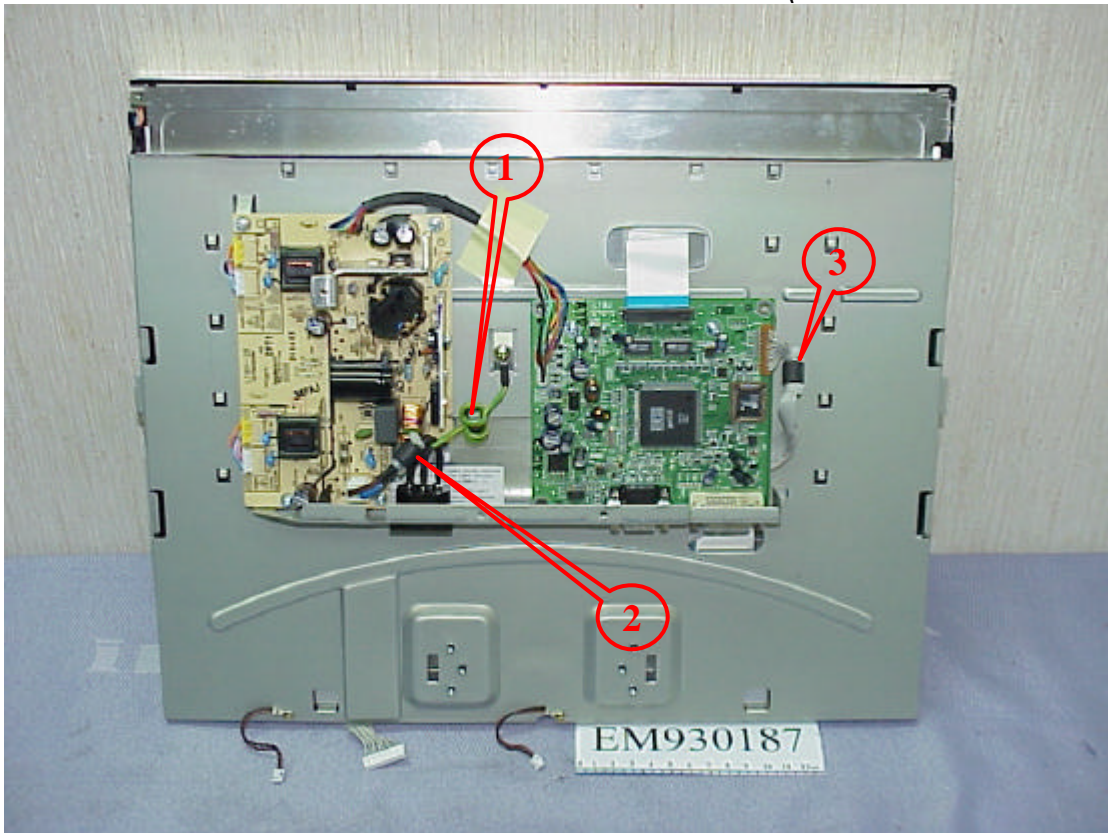


Figure 8  
Internal View (Main Board/Component Side)





Figure 9  
Internal View (Main Board/Foil Side)

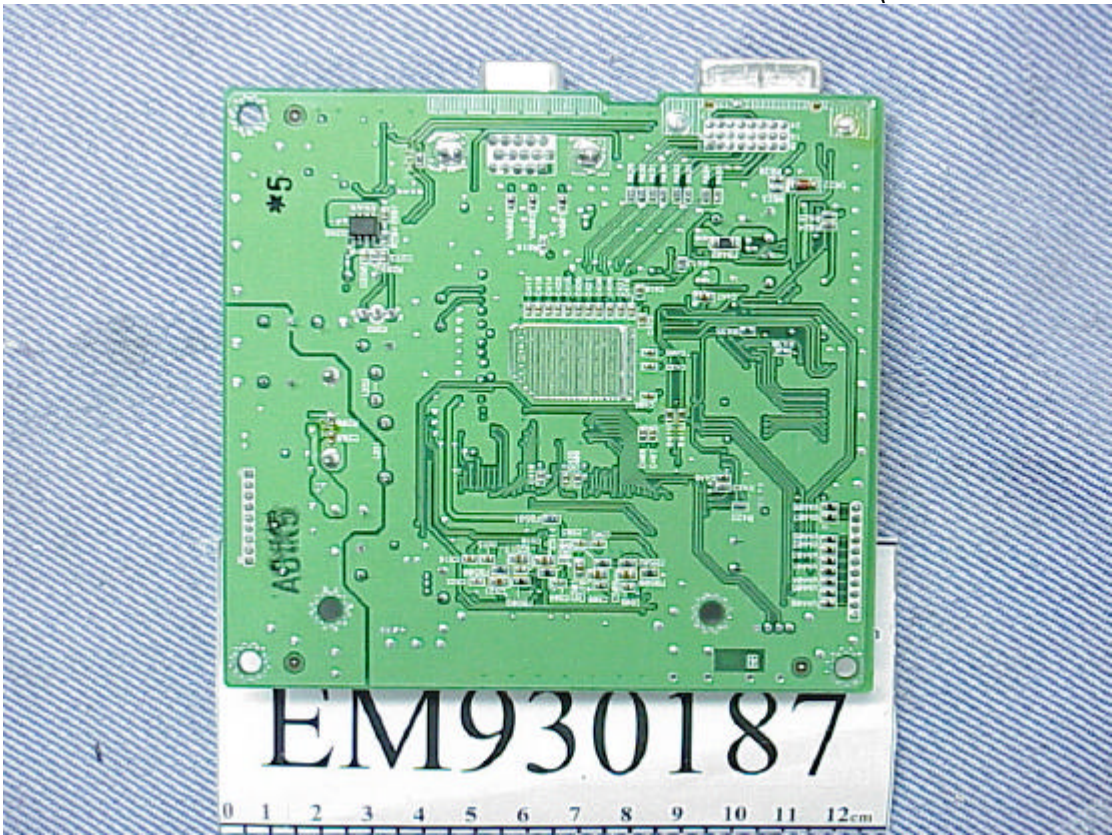


Figure 10  
Internal View (Power Board/Component Side)

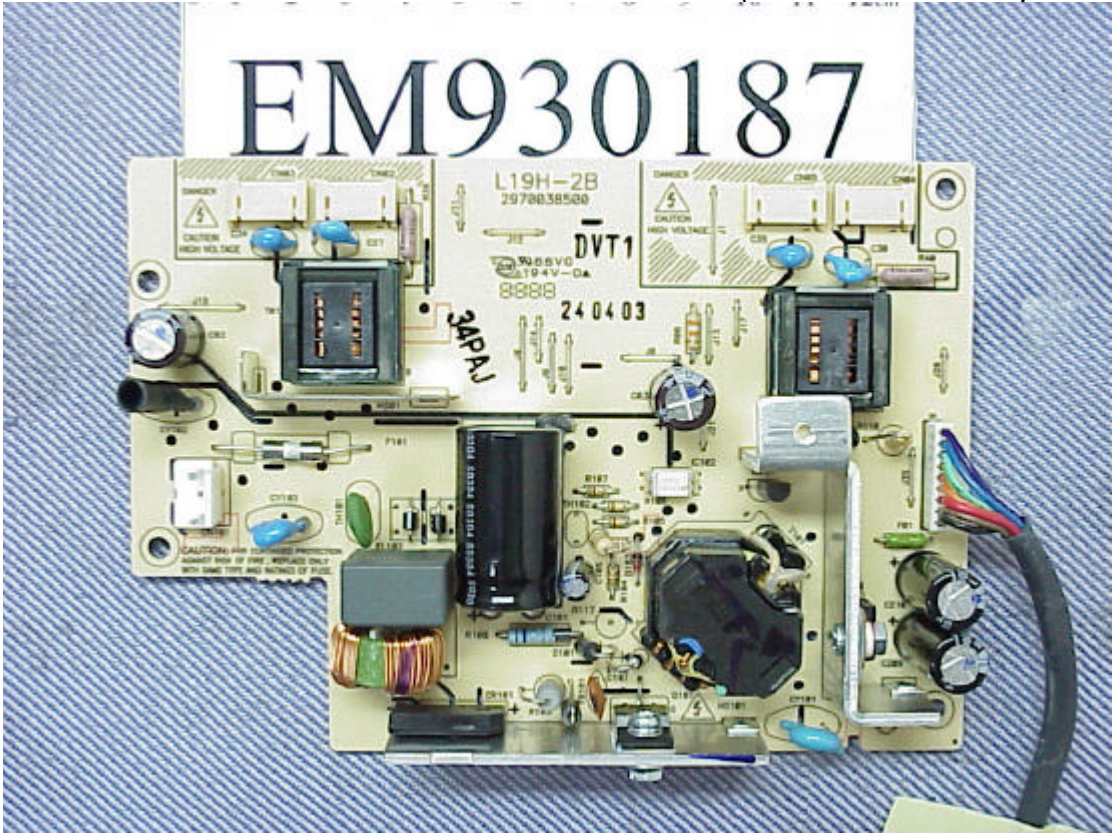




Figure 11  
Internal View (Power Board/Foil Side)



Figure 12  
Internal View (LCD Panel/Front View)





Figure 13  
Internal View (Function Control Board/Foil Side)

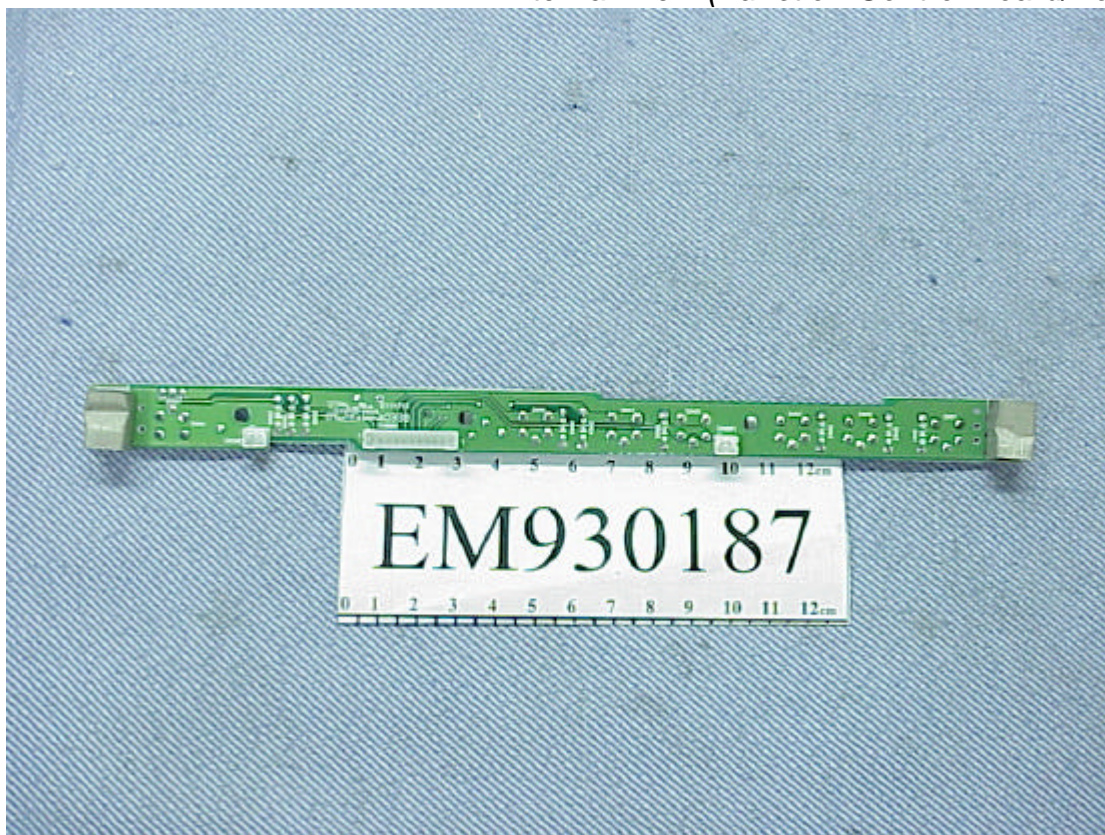


Figure 14  
Internal View (Function Control Board/Component Side)

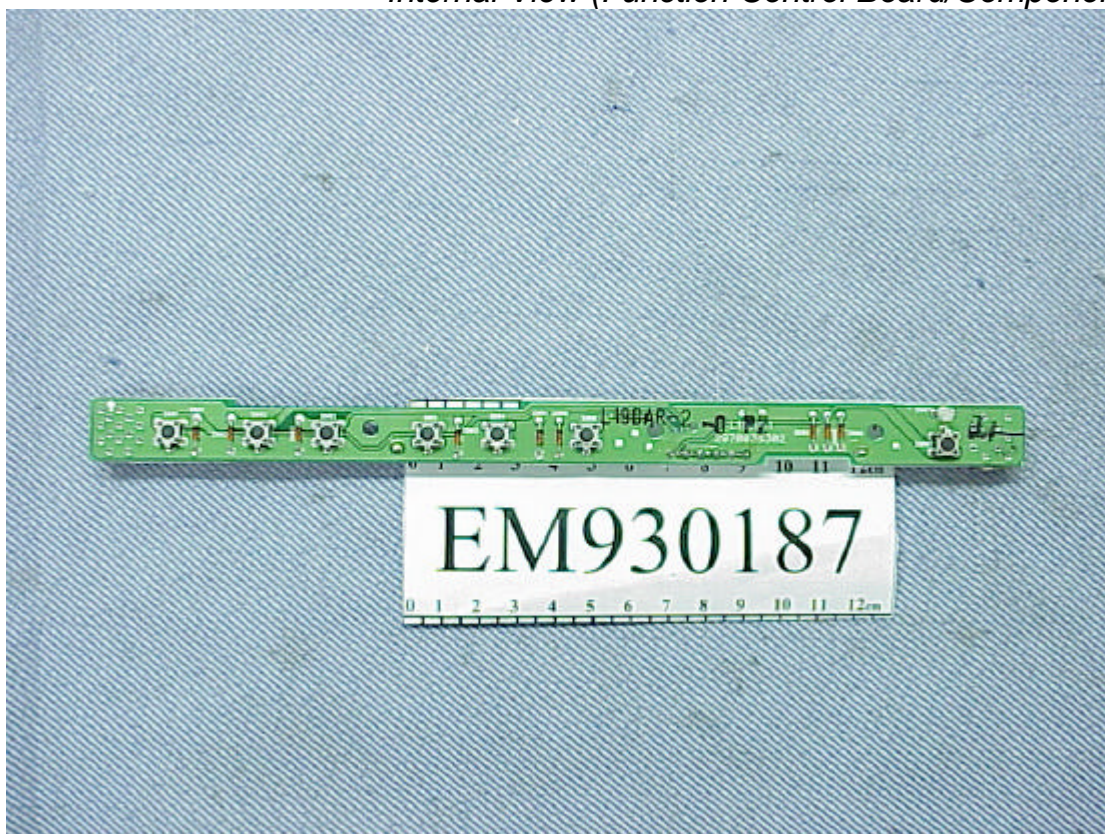




Figure 15  
Internal View (Rear View of LCD Panel)



Figure 16  
Internal View (Label of LCD Panel)





Figure 17  
Internal View (PCB of LCD Panel/Component Side)

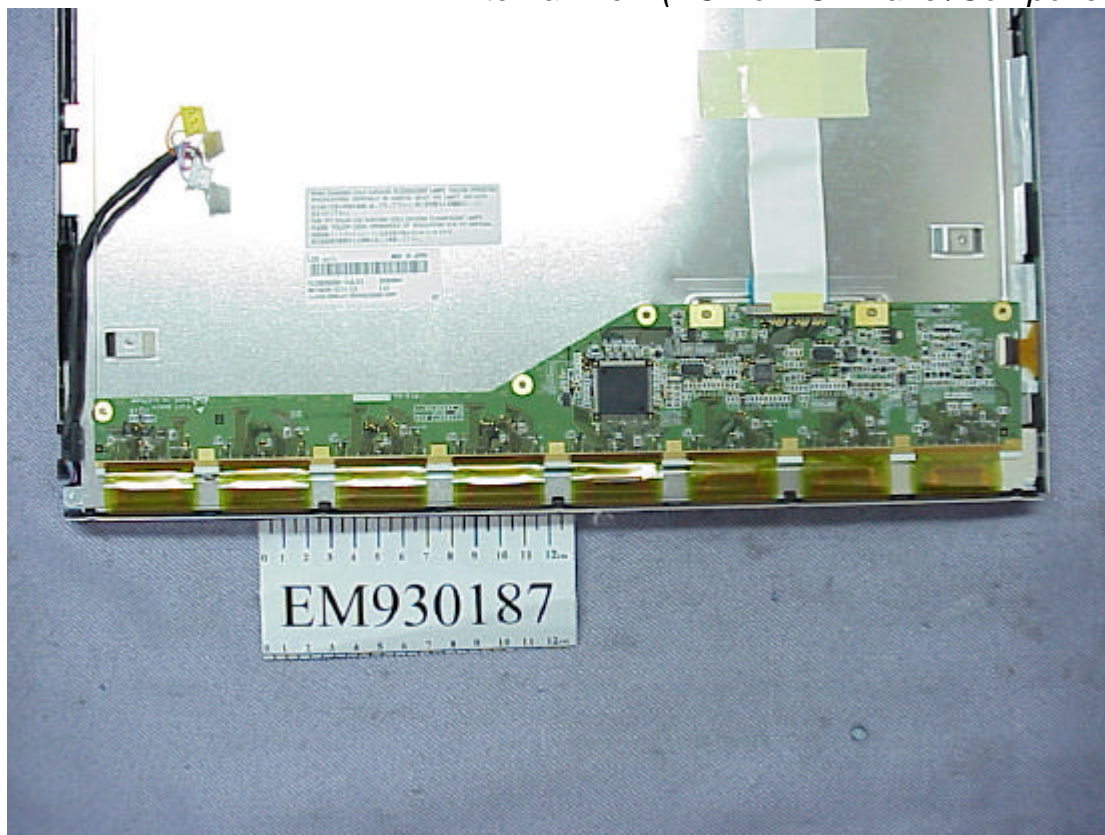


Figure 18  
Internal View (PCB of LCD Panel/Foil Side)

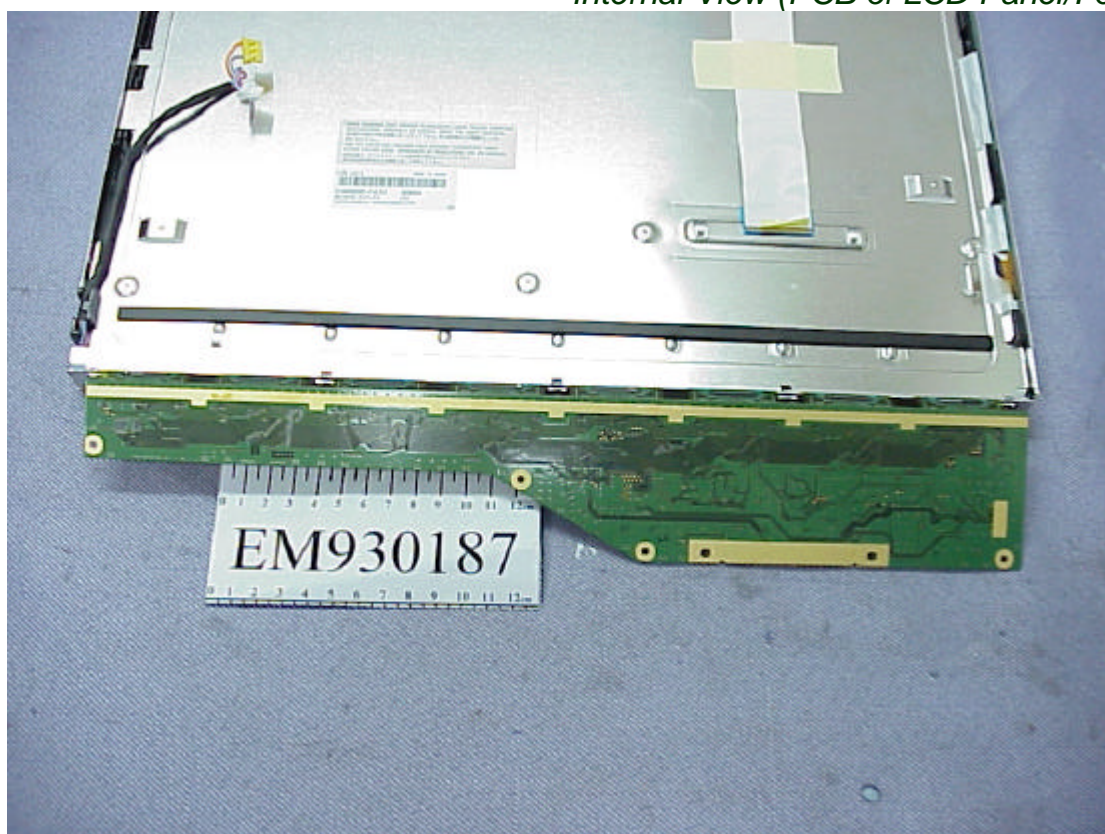




Figure 19  
D-Sub Data Cable

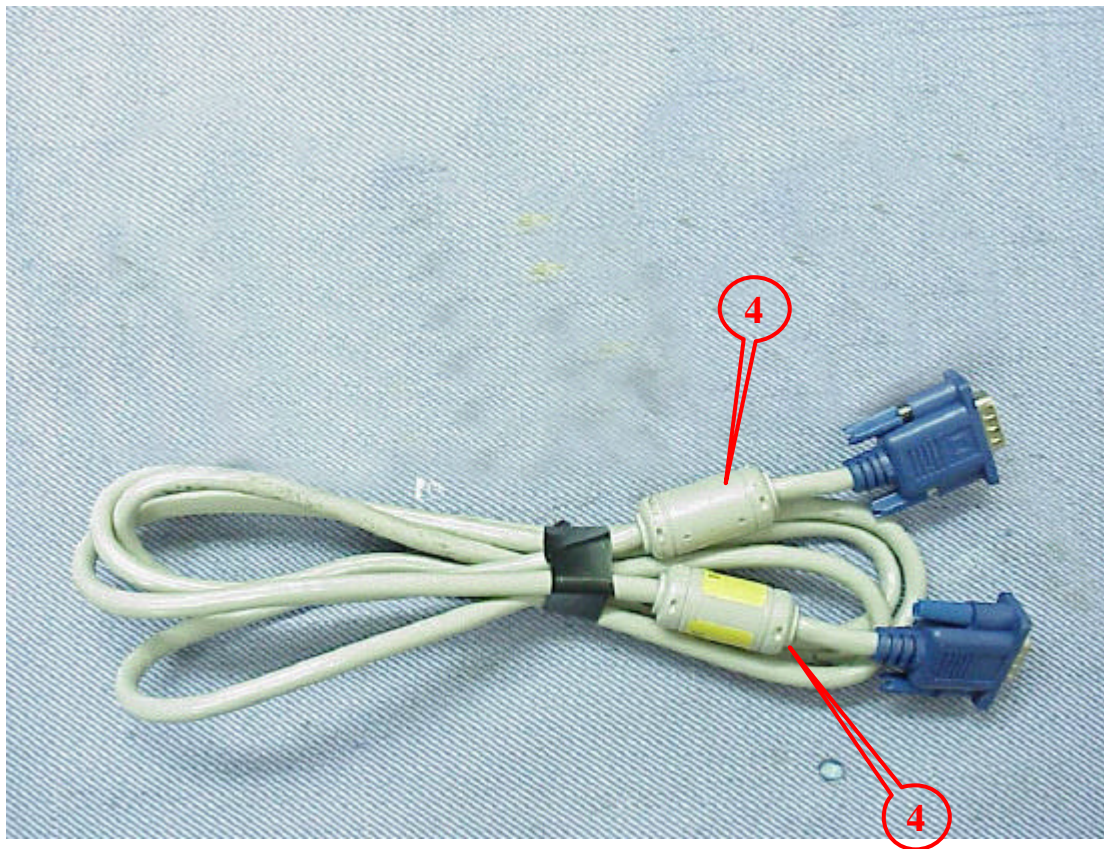


Figure 20  
DVI Data Cable

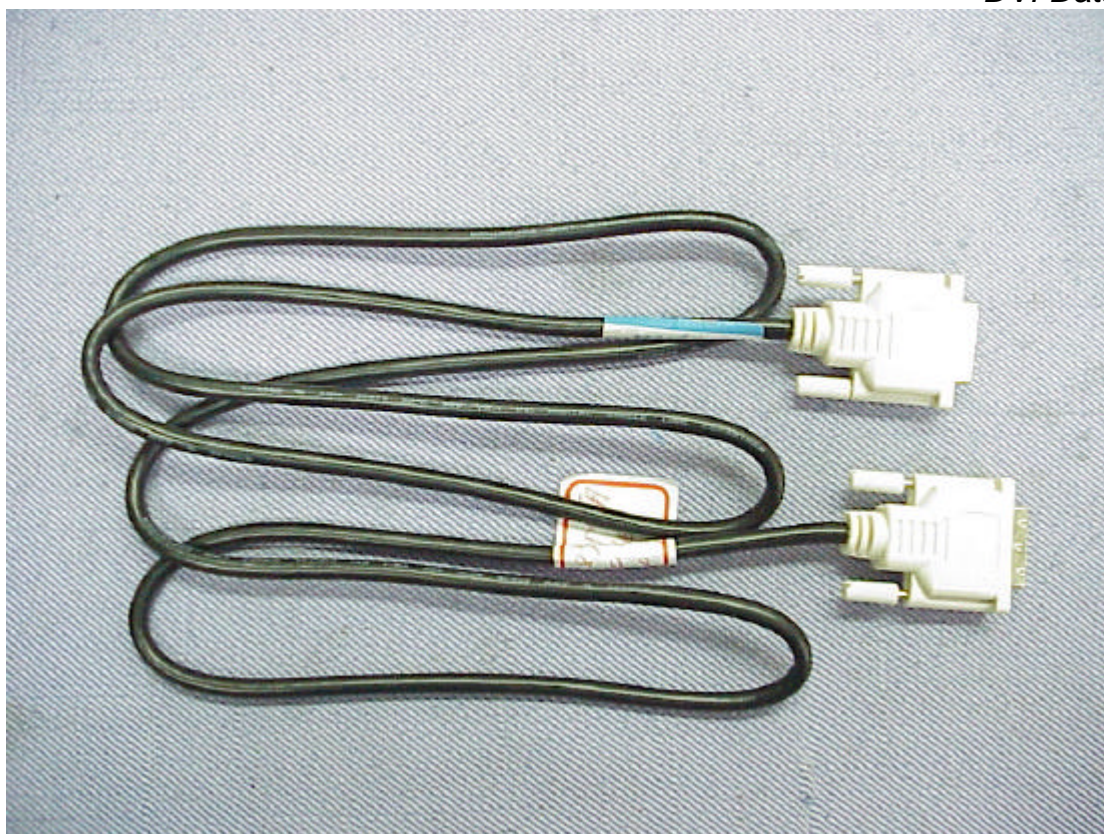




Figure 21  
Internal View (EMI Solution)

