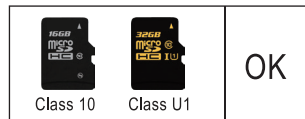


## CAUTIONS:

1. Please format the card first after inserting the card, otherwise there will be a video error and a stuck condition when playing back the video.
2. This product's power cable comes with power-off protection, and the car's flame-extinguishing machine is in the ignition-off state to enter the time lapses video and keep recording. When the voltage is low, the machine will stop recording automatically to avoid car engine can't start properly because of low voltage.
3. In the Wi-Fi interface, when mobile phone is connected to machine by Wi-Fi, video will display on mobile phone only, won't display on machine. If Wi-Fi is disconnected, video will display on machine automatically.
4. After the machine accidentally crash, long press “⏻” key to turn it off, and short press to start up again.
5. If you use OBD power, when you turn off the car, the recorder screen will remain on for about 3 minutes before turning off.
6. For the best performance and durability of video recording, we recommend to use C10 U1 level TF card or better.

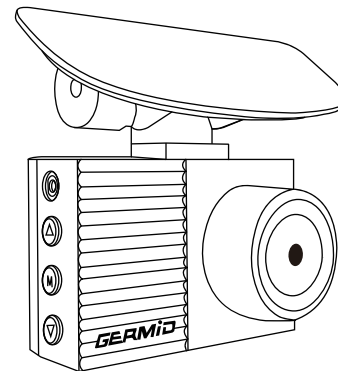


\* This manual is only for your reference, please check the actual product as the standard!

Serial No.: 2020M30610

# 2 Inch HD Steaming Media 4K Dash Camera

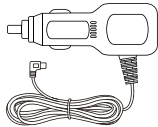
## USER MANUAL



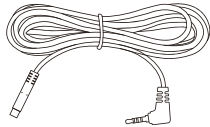
## PACKAGE



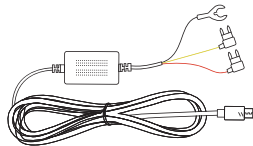
1. Dash camera



2. Car charger



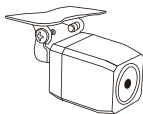
3. Extension cable



4. ACC wiring harness



5. SD Card



6. Rear camera



7. Suction cup bracket



8. User manual

## FEATURES

- 2 inch display
- Front 4K
- Rear FHD 1080P
- Wi-Fi connect
- F1.8 Large Aperture
- Easy installation
- parking monitor
- Super capacitor
- Loop Recording
- Super Night Vision
- Time-lapse Video
- G-sensor

## GENERAL INTRODUCTION

The machine uses a 2-inch display, the front lens adopts the SONY-IMX415 standard, can achieve 4K ultra-high-definition recording, supports up to 128GB memory card, and built-in 2.4G WI-FI module. You can connect to the mobile app to watch videos at any time.

## PRODUCT SPECIFICATION

<b>Front camera:</b> IMX415	<b>Front lens resolution:</b> 3840×2160P 4K
<b>Storage:</b> MAX 128GB, SD card	<b>Rear lens resolution:</b> 1920*1080P
<b>Display screen:</b> 2 inch, 240*320	<b>Video compression:</b> H.265 / H.264
<b>G-sensor:</b> Support	<b>Video format:</b> MP4
<b>powered by:</b> Car charger	<b>Power supply:</b> USB 5V 2A
<b>Wi-Fi:</b> support	<b>recording angle:</b> front 170°, rear 120°
<b>Backup camera display:</b> support	<b>Working current:</b> DC13V=500±20MA
<b>Parking monitor:</b> support	<b>Operating Voltage:</b> 12V-24V
<b>Capacitance:</b> 1.5F	<b>Operating temperature:</b> -20 °C~+65 °C

## PRODUCT INTRODUCTION

### EQUIPMENT INSTRUCTIONS



1: The red light flashing indicates the device is recording.

The blinking yellow light indicates that the current video is being locked.

2: Date and time display.

3: Memory card identification.

4: Recording sound or not.

5: The rear camera connected or not.

6: Wi-Fi status display.

7: Recording time.

8: WIFI name and password of the machine.

9: Video interface: Short press to switch the screen backlight;

Menu interface: short press to confirm OK Long press. function: switch machine.

10: Recording resolution display of front lens.



11: Front HD lens

12: Video interface: short press to lock the video, long press to turn on/off WIFI Enter the menu: short press to scroll up

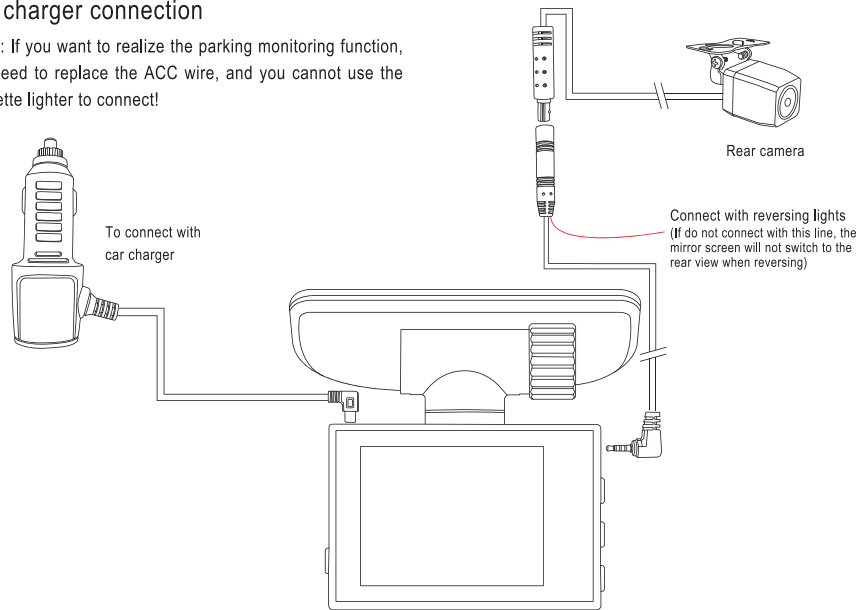
13: Video interface: short press to enter the menu / long press to switch the display screen Enter the menu interface: short press to return to the previous level/exit the menu

14: Video interface: short press to take photo; long press to turn off voice recording Enter the menu: short press to scroll

## HOW TO WIRE

### Car charger connection

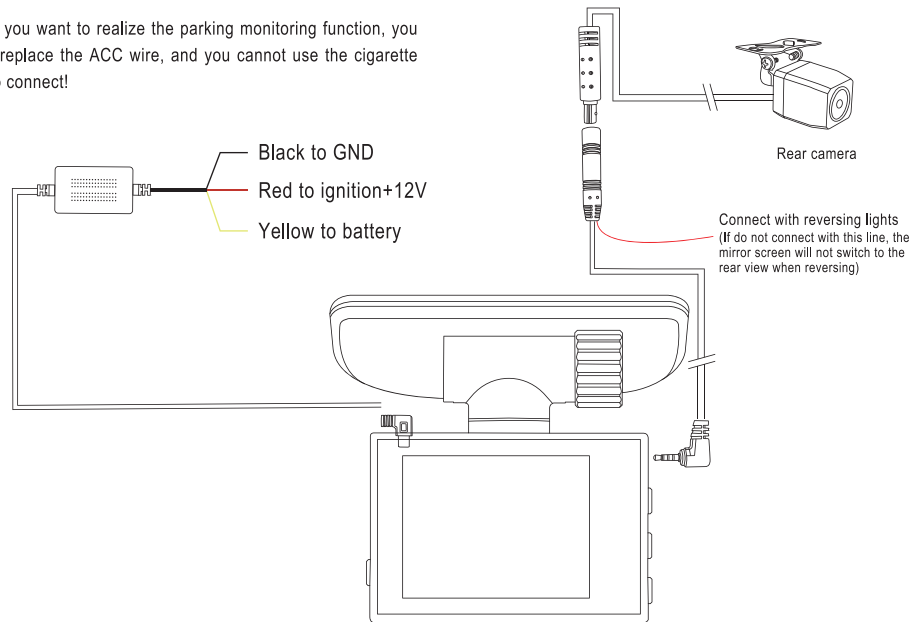
\*Note: If you want to realize the parking monitoring function, you need to replace the ACC wire, and you cannot use the cigarette lighter to connect!



## HOW TO WIRE

### Parking monitoring needs to connect ACC power control line

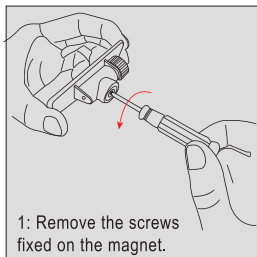
\*Note: If you want to realize the parking monitoring function, you need to replace the ACC wire, and you cannot use the cigarette lighter to connect!



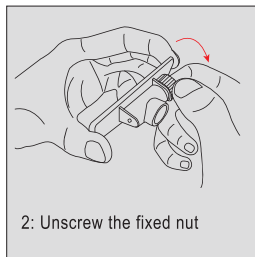
## REPLACE BRACKET

This dash cam has two optional brackets that can be replaced

Remove the rotating rod



1: Remove the screws fixed on the magnet.

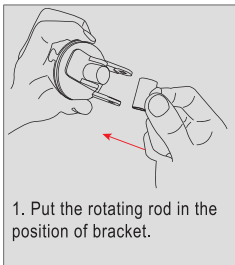


2: Unscrew the fixed nut

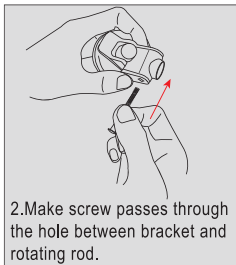


3: Pull out the screw with nut removed.

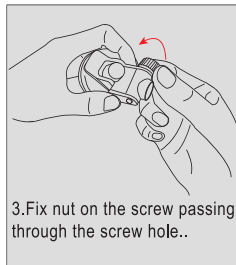
Install the rotating rod



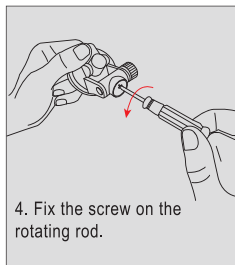
1. Put the rotating rod in the position of bracket.



2.Make screw passes through the hole between bracket and rotating rod.



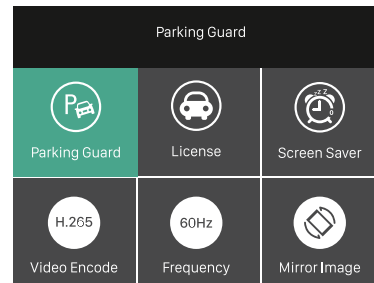
3.Fix nut on the screw passing through the screw hole..



4. Fix the screw on the rotating rod.

## MENU SETTING

Short press the side of the machine, short press the **M** button to enter the system menu setting interface.



**File playback:** Normal file", "Event file"and"Picture file" are optional. After entering the playback page, press " OK " button to switch to view the front / middle / rear channel video.

**Resolution:** 4K + 1080P or 2K + 1080P .

**Loop Record:** 1 minute / 3 minutes / 5 minutes.

**Time-lapse:** "Off" "1S" "2S" "3S".

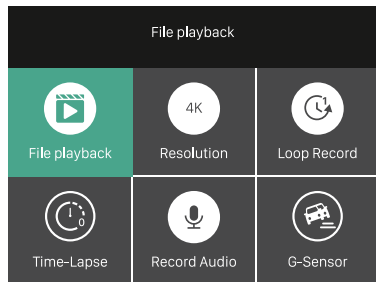
When "OFF" is selected, the device will shut down automatically when the ACC is disconnected.

Select "1S", "2S", and "3S": When ACC is disconnected, the device will automatically enter the time-lapse monitoring state and record as "1S frame", "2S frame", and "3S frame".

After the ACC is powered, the device exits the time-lapse monitoring and starts normal recording. **(This function can only be used when the wire is hard line , and this function cannot be used when power by cigarette lighter)**

**Record Audio:** On / off can be set; when set to "Off", there will be no sound in recording video.

**G-Sensor:** Off / High / Medium / Low can be set; when gravity sensor is turned on, the machine is subjected to collision during normal recording. When the collision acceleration value reaches the value set by G-Sensor (trigger sensitivity can be set as required), then the system will Lock the currently recorded video, and the locked video will not be covered by the loop system.



**Parking Monitor:** Off / High / Medium / Low can be set; when the dash cam is off, if it detects vibration of the car (trigger sensitivity can be set as required), then the recorder will automatically start recording for 20 seconds and then shut down.

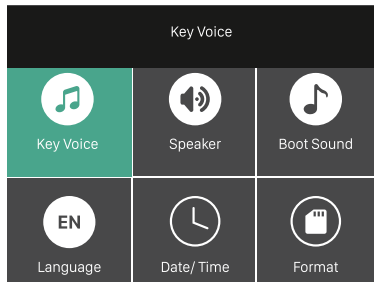
**License:** You can set your license plate number and then display it on the recording interface and the recorded video.

**Screen Saver:** Off / 1 minute / 3 minutes.

**Video Encode:** H.264 / H.265 can be set.

**Frequency:** 50Hz / 60Hz.

**Mirror Image:** ON / OFF



**Key Sound:** On / off can be set.

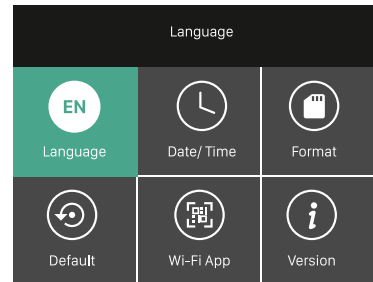
**Speaker:** Off / low / medium / high.

**Boot sound:** On / off can be set.

**Language:** 8 languages optional.

**Date/Time :** time / date / time format / date format can be set.

**Format:** If the files in the SD card are not important, user can clear all the files in the SD card with one click.



**Default:** After multiple custom settings, users can use this option to restore the recorder to the original factory setting.

**Wi-Fi App:** Scan the QR code to download the APP, and realize the wireless connection between the mobile phone and the device through Wi-Fi.

**Version:** Check the device version number.

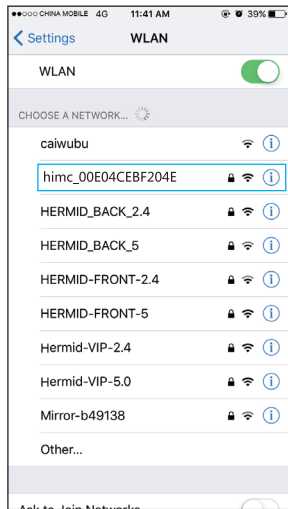
## WI-FI CONNECTION

Built-in Wi-Fi module, this machine can be connected to mobile phone through Android or IOS APP, please follow the instructions below.

1. Search "RoadCam" in the App store (Apple) or App Store (Android), or scan the QR code below to quickly install the APP.

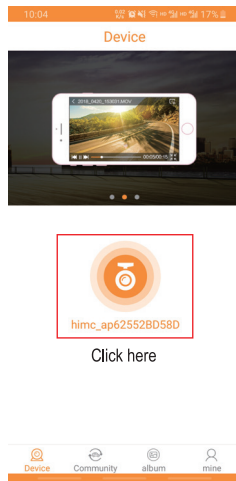


2. Turn on the Wi-Fi of the mobile phone, and connect the Wi-Fi ID (the default name is himc\_apxxxxxxx \_ \*), enter the initial password: 12345678.

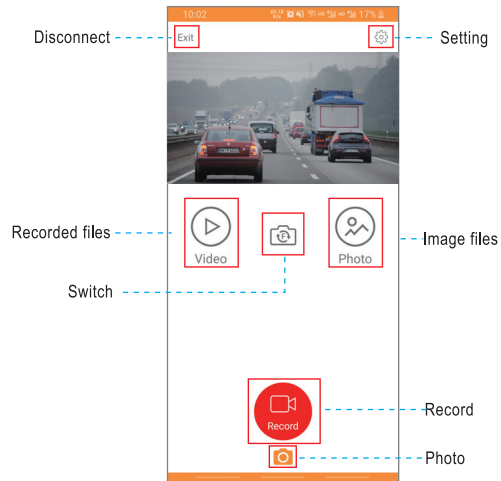


## WI-FI CONNECTION


3. Click the  icon to connect the phone and dash cam.

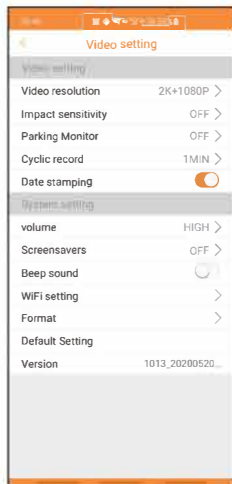


4. After connecting successfully, on the bottom right corner of the dash cam will display "Please operate in the App!" Users can view the video being recorded or make other settings on the mobile phone.

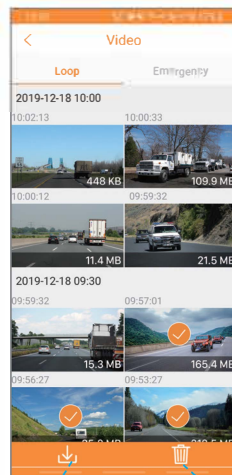
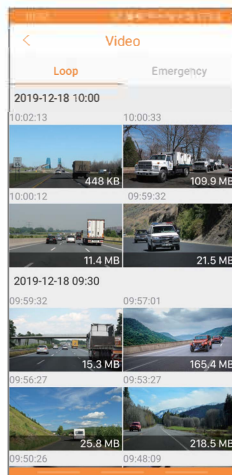


Recording interface

5. Click  to enter the recorded video interface, you can perform individual, batch deletion, or download to the local on the recorded video.



Setting interface



Download

Delete

## FCC STATEMENT

Changes or modifications not expressly approved by the party responsible for compliance could void the user's authority to operate the equipment.

This equipment has been tested and found to comply with the limits for a Class B digital device, pursuant to Part 15 of the FCC Rules. These limits are designed to provide reasonable protection against harmful interference in a residential installation. This equipment generates uses and can radiate radio frequency energy and, if not installed and used in accordance with the instructions, may cause harmful interference to radio communications. However, there is no guarantee that interference will not occur in a particular installation. If this equipment does cause harmful interference to radio or television reception, which can be determined by turning the equipment off and on, the user is encouraged to try to correct the interference by one or more of the following measures:

- Reorient or relocate the receiving antenna.
- Increase the separation between the equipment and receiver.
- == Connect the equipment into an outlet on a circuit different from that to which the receiver is connected.
- Consult the dealer or an experienced radio/TV technician for help

This device complies with part 15 of the FCC rules. Operation is subject to the following two conditions (1) this device may not cause harmful interference, and (2) this device must accept any interference received, including interference that may cause undesired operation.

This equipment complies with FCC radiation exposure limits set forth for an uncontrolled environment. This equipment should be installed and operated with minimum distance 20cm between the radiator & your body.