

⚠️ **WARNING**

- Chemical Burn Hazard. Keep batteries away from children. Do not ingest the battery.
- The remote control supplied with this product contains a coin/button cell battery. If the coin/button cell battery is swallowed, it can cause severe internal burns in just 2 hours and can lead to death.
- Keep new and used batteries away from children.
- If the battery compartment does not close securely, stop using the product and keep it away from children.
- If you think batteries might have been swallowed or placed inside any part of the body, seek immediate medical attention.

**Battery Warning:**

- Insert the battery in the proper direction as indicated by positive (+) and negative (-) markings in the battery holder.
- Remove a depleted battery promptly and recycle or dispose of it in accordance with Local and National Disposal Regulations.
- If a battery leaks, remove it and recycle or dispose of it in accordance with battery manufacturer’s instructions and Local and National Disposal Regulations. If fluid from the battery comes into contact with skin or clothes, flush with water immediately.
- Remove the battery if your device is to be stored for an extended period of time without being used.

**troubleshooting**

- If the sound bar is not working correctly, turn it on/off to restart
- If the sound bar won’t turn on, recharge the battery and try again
- If the sound bar makes no sound when using AUX or optical modes, make sure the sound bar is in the correct setting and the cables are properly connected
- If the sound bar still makes no sound make sure the device that you are plugged into is set to output AUX or optical in the settings
- If the sound bar won’t charge, make sure the power supply works, is 15V 1.6A, and is not damaged and is properly plugged in
- If the sound bar makes no sound or does not show as an available device, make sure it is in the correct mode and not paired, if it is paired, unpair and repair to the desired device
- If it makes no sound when using AUX or optical modes, make sure the sound bar is in the correct setting and the cables are properly connected
- If the sound bar still makes no sound when it is in optical mode, you may need to activate PCM audio output on your device
- This sound bar does not have a pairing code. If you are prompted for one make sure you are connecting to the correct device. If you are “forget” the device and repair. If you still prompted enter 0000.

**need some help?**

Can’t get the sound bar to pair? Have a question or comment?



call us at: 877-698-4883 or: 877-MyTgtTech



online at: TargetTechSupport.com

**safety**

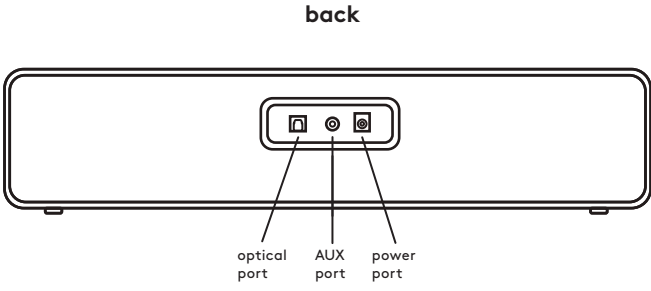
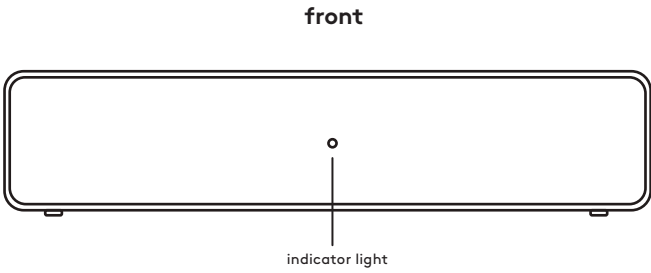
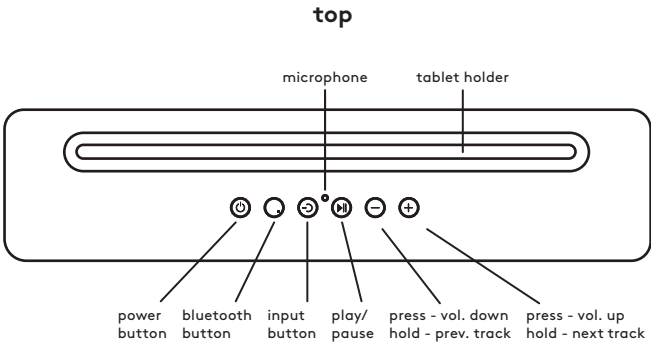
- Do not use near any water source
- Do not modify or repair this device
- Do not use in high temperatures or extreme weather
- Do not use chemical detergents to clean your device, use a soft dry cloth
- Do not drop the product and do not expose it to any major shocks.
- Do not operate the product outside the power limits given in the specifications.
- Protect the product from dirt, moisture and overheating and use it in dry rooms only.
- As with all electrical devices, this device should be kept out of the reach of children.

**heyday**

FCC ID: 2AC03-BTP58 Model: BTP58 Input: 15V 1.6A Max. AC/DC Adapter Input: 100-240V-50/60Hz 0.8A Output: 15.0V 1.6A Battery Capacity: 7.4V/2500mAh/18.5Wh Remote Connection Distance: 3 meters (9.84 feet) Made in China.  
This device complies with Part 15 of the FCC rules. Operation is subject to the following two conditions: 1) This device may not cause harmful interference, and 2) this device must accept any interference received, including interference that may cause undesired operation.  
Warning: Changes or modifications to this unit not expressly approved by the party responsible for compliance could void the user's authority to operate the equipment.  
NOTE: This equipment has been tested and found to comply with the limits for a Class B digital device, pursuant to Part 15 of the FCC Rules. These limits are designed to provide reasonable protection against harmful interference in a residential installation. If this equipment generates, uses and can radiate radio frequency energy and, if not installed and used in accordance with the instructions, may cause harmful interference to radio communications.  
However, there is no guarantee that interference will not occur in a particular installation. If this equipment does cause harmful interference to radio or television reception, which can be determined by turning the equipment off and on, the user is encouraged to try to correct the interference by one or more of the following measures:  
• Reorient or relocate the receiving antenna.  
• Increase the separation between the equipment and receiver.  
• Connect the equipment into an outlet on a circuit different from that to which the receiver is connected.  
• Consult the dealer or an experienced radio/TV technician for help.  
• The device has been evaluated to meet general RF exposure requirement. The device can be used in portable exposure condition without restriction.  
Target Corp. Mpls. MN, 55403 Phone: 1-612-304-6073

# sound bar

hey! welcome to your heyday™ sound bar.  
let's get you set up.



**included**

- Sound Bar
- Remote Control
- Power Adapter
- AUX Cable
- Optical Cable
- AUX to RCA Cable

**indicators**

- Rapid Flashing White - Pairing
- Solid Blue - Paired with playback
- Solid Yellow - AUX mode
- Solid Green - Optical mode
- Flashing Blue - Muted in bluetooth mode
- Flashing Yellow - Muted in AUX mode
- Flashing Green - Muted in optical mode
- Solid Red - Charging mode
- No Light - Power off/charging complete

- Ascending Tones - Power on
- Descending Tones - Power off
- Two Rapid Dings - Low battery
- Double Chime - Paired
- Medium Pitched Double Chime - AUX connected
- High Pitched Double Chime - Optical connected
- Three Rapid Tones - Disconnected
- Quick Ascending Tone - Max volume
- Quick Descending Tone - Min. volume
- Two Beeps - Incoming call

**using bluetooth**

- Press the power button to turn on the sound bar
- When turning on the sound bar for the first time it will automatically enter pairing mode
- The indicator light will flash white when it is ready to pair
- Use the bluetooth settings on your device to pair with HEYDAY SOUNDBAR 01
- The sound bar is connected the indicator light will start to flash blue, followed by a chime; the light will turn solid with playback
- The sound bar will automatically reconnect to the device it was most recently paired to when you turn the sound bar on and it is in bluetooth mode
- To re-enter pairing mode disconnect from your device using the bluetooth menu
- You can also re-enter pairing by holding the bluetooth button until you hear two rapid dings and the indicator light is flashing white; follow the above steps to connect your device again

**charging**

- Place the sound bar on a sturdy flat surface
- Plug the included power adapter into the power port and into a grounded wall outlet
- If you need to use a different power source make sure it is a power supply of DC 15V 1.6A minimum **warning:** please use UL compliant power supply
- Full charge requires approximately 3 hours and will provide 8 hours of use at 50% volume
- When the charging indicator turns off, charging is completed
- note:** The light will not indicate it is charging when the sound bar is in use

**AUX/line in/RCA**

- Insert 3.5mm AUX cable or AUX to RCA cable into the sound bar AUX port
- Insert opposite end of the AUX cable into your device
- Press the input button to switch to the AUX function, and switch your device to AUX

**optical**

- Remove the protective tip on the connectors
- Insert the optical cable into the back of the sound bar optical port
- Insert the opposite end of the optical cable into the back of your device
- Press the input button to switch to the optical function, and switch your device to optical
- note:** If optical is selected on your device and no sound comes out you may need to activate PCM audio output on your device
- When in optical mode and the sound bar is powered off, it will power back on in optical mode

**input**

- Press the input button to switch from bluetooth,AUX, and optical

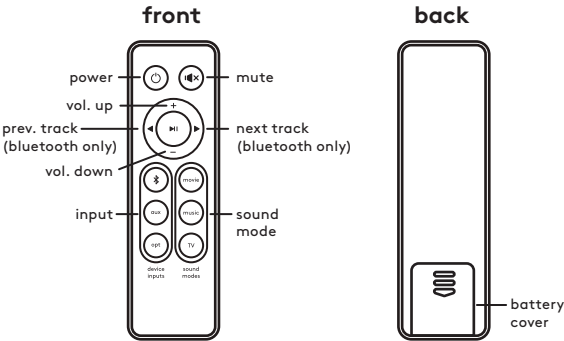
**phone calls**

- Press the play/pause button to answer/end incoming calls
- Hold the play/pause button to reject incoming calls

**using the tablet holder**

- The tablet holder fits most tablets, when using the holder be sure that the tablet is in landscape mode for the best stabilization

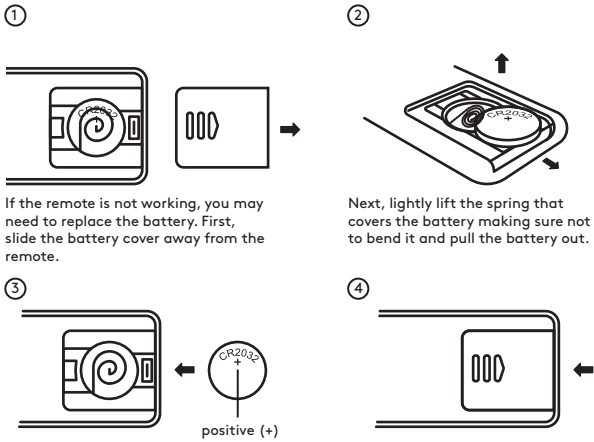
# using the remote



**sound bar remote**

- To switch to a different device input use the bluetooth, aux, and opt (optical) buttons
- When the sound bar is being used in battery mode and is turned 'off' the sound bar will fully power down after not receiving a signal for a few hours to conserve battery; when it powers down fully the sound bar will no longer receive signal from the remote and will need to be powered back on using the power button on the sound bar
- Use the sound modes to switch to specific sound profiles built into the sound bar that will best optimize the sound of the type of media you're planning to enjoy
- note:** When using the remote for the first time be sure to remove the protective film from the battery; the remote uses CR2032 batteries, if it is not working replace the battery

# battery installation



Again, lightly lift the spring that covers the battery making sure not to bend it and insert the new battery positive side up.

Replace the battery cover after the new battery is installed, making sure it “clicks” into place.