

# 1. Antenna Description:

Antenna type	Internal antenna
Model	Y15
Frequency range	2400-2500MHz
Manufacturer	Dongguan Langchen Technology Co.,Ltd.
Address	Room 704, No. 27 East, Wusha Xingfa South Road, Chang'an Town, Dongguan City, Guangdong Province, China
ANT Peak Gain	1.05 dBi

# 2. Antenna Photo:

Length:17.84mm  
Width:0.83mm



### 3. Test Equipment & Conditions

#### 3.1 Test instrument

VSWR is tested using Agilent E5071B connected to a hand mechanism, and the status is free space.

#### 3.2 Test environment and methods

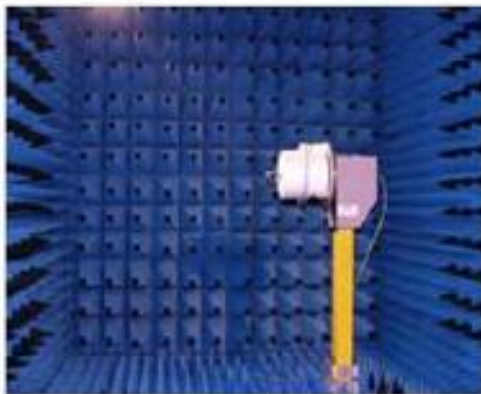
Dark room specifications: ETS-743

TD-SCDMA test equipment: StarPoint SP6010/Agilent 8960

LTE-TDD/FDD-SCDMA test equipment: StarPoint SP8011/CMW500

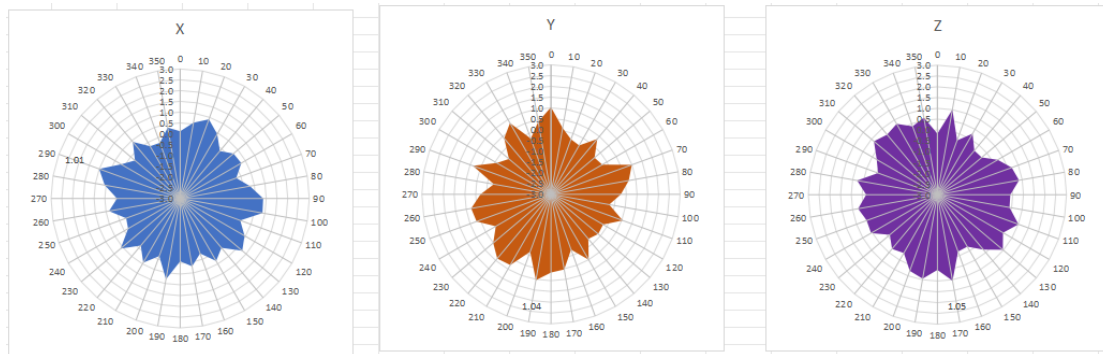
WCDMA/GSM/CDMA test equipment: Agilent 8960

Passive efficiency testing equipment: Agilent Technologies E5071B

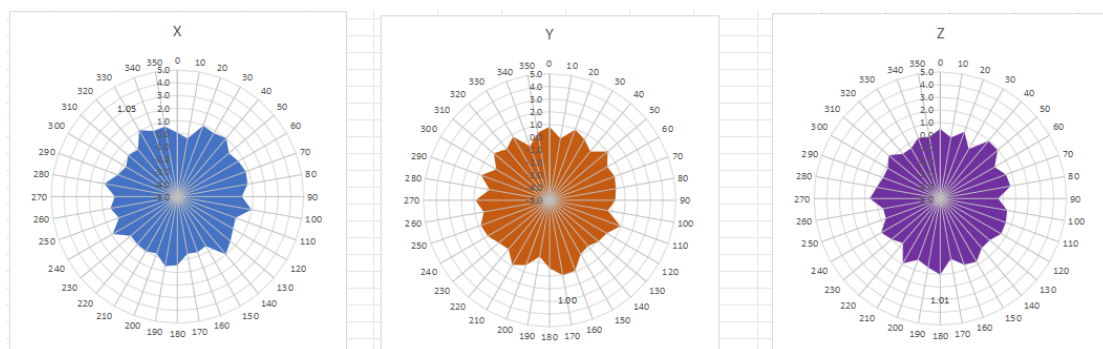


## 4 . Antenna Radiation Pattern

2400MHz



2450MHz



2500MHz

