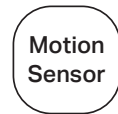


# Quick Start Guide

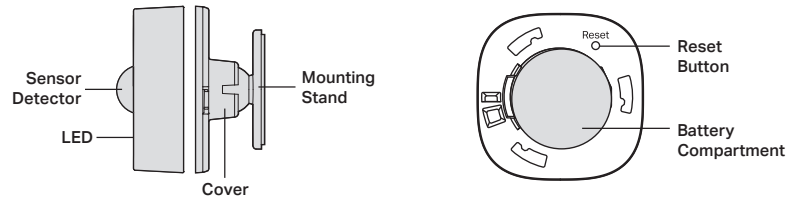


7106509249 REV1.0.0

Images may differ from actual products.

## Meet Your Motion Sensor

Motion Sensor detects movement in a certain area and triggers different actions in response to the movement, making your home even smarter.



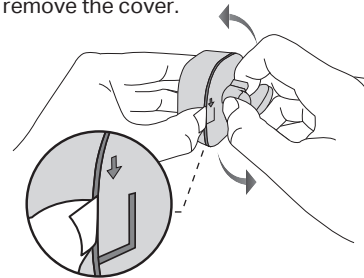
## Before You Start

A Tapo Hub is required. Make sure your Tapo Hub is successfully added via the Tapo app.

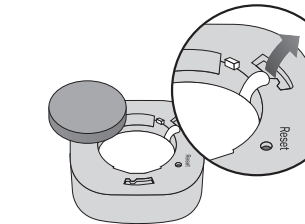


## 1. Power Up Your Sensor

a. Pull up the clip. Then twist the cover anticlockwise with your other hand to remove the cover.

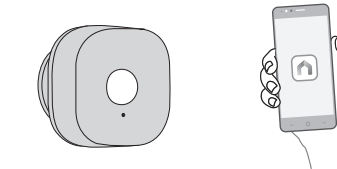


b. Remove the battery insulation tab to power up your sensor.



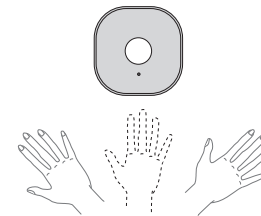
## 2. Set Up Your Sensor

Open the Tapo app, tap the ⊕ button in the app, and select your sensor. Follow the app instructions to complete the setup.



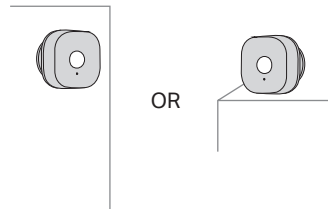
### 3. Test Your Sensor

Wave your hand in front of the sensor to test it. The Tapo app should show that the sensor has been triggered.

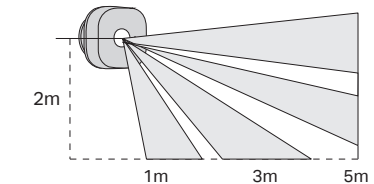


### 4. Place Your Sensor

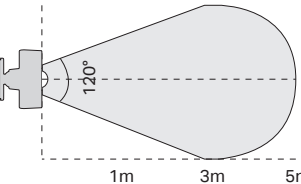
Place the sensor on a flat surface, or use the magnet base or the included 3M adhesive to stick your sensor nearly anywhere.



The recommended installation height is 1.5m to 2m. Outside these parameters will reduce the optimal performance of the sensor.



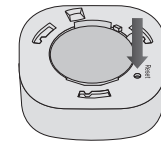
Detection Area - Side View



Detection Area - Top View

### How to enter pairing mode

Use a pin to press and hold the Reset button for 3 seconds until the front LED starts blinking.



?

### Need some help?

Visit [www.tapo.com/support/](http://www.tapo.com/support/) for technical support, user guides, FAQs, warranty & more

©2021 TP-Link

### Safety Information

Keep the device away from water, fire, humidity or hot environments.  
Do not attempt to disassemble, repair, or modify the device. If you need service, please contact us.  
Do not use the device where wireless devices are not allowed. Please read and follow the above safety information when operating the device. We cannot guarantee that no accidents or damage will occur due to improper use of the device.  
Please use this product with care and operate at your own risk.  
Do not ingest battery, Chemical Burn Hazard  
This product contains a coin / button cell battery. If the coin / button cell battery is swallowed, it can cause severe internal burns in just 2 hours and can lead to death.  
Keep new and used batteries away from children.  
If the battery compartment does not close securely, stop using the product and keep it away from children.  
If you think batteries might have been swallowed or placed inside any part of the body, seek immediate medical attention.

#### CAUTION!

Avoid replacement of a battery with an incorrect type that can defeat a safeguard.

Avoid disposal of a battery into fire or a hot oven, or mechanically crushing or cutting of a battery, that can result in an explosion.

Do not leave a battery in an extremely high temperature surrounding environment that can result in an explosion or the leakage of flammable liquid or gas; Do not leave a battery subjected to extremely low air pressure that may result in an explosion or the leakage of flammable liquid or gas.

Operating Frequency / max output power:

868MHz~868.6MHz / 25mW (e.r.p)

TP-Link hereby declares that the device is in compliance with the essential requirements and other relevant provisions of directives 2014/53/EU, 2009/125/EC, 2011/65/EU and (EU) 2015/863.

The original EU declaration of conformity may be

found at <https://www.tapo.com/en/support/ce/>

TP-Link hereby declares that the device is in compliance with the essential requirements and other relevant provisions of the Radio Equipment Regulations 2017.

The original UK declaration of conformity may be found at <https://www.tapo.com/support/ukca/>



#### FCC Statement

This equipment has been tested and found to comply with the limits for a Class B digital device, pursuant to part 15 of the FCC Rules. These limits are designed to provide reasonable protection against harmful interference in a residential installation. This equipment generates, uses and can radiate radio frequency energy and, if not installed and used in accordance with the instructions, may cause harmful interference to radio communications. However, there is no guarantee that interference will not occur in a particular installation. If this equipment does cause harmful interference to radio or television reception, which can be determined by turning the equipment off and on, the user is encouraged to try to correct the interference by one or more of the following measures:

—Reorient or relocate the receiving antenna.

—Increase the separation between the equipment and receiver.

—Connect the equipment into an outlet on a circuit different from that to which the receiver is connected.

—Consult the dealer or an experienced radio/TV technician for help.

#### FCC Radiation Exposure Statement

This device complies with FCC radiation exposure limits set forth for an uncontrolled environment and it also complies with Part 15 of the FCC RF Rules. This equipment must be installed and operated in accordance with provided instructions and the antenna(s) used for this transmitter must be installed to provide a separation distance of at least 20 cm from all persons and must not be co-located or operating in conjunction with any other antenna or transmitter.

End-users and installers must be provided with antenna installation instructions and consider removing the no-collocation statement.

This device complies with Part 15 of the FCC Rules. Operation is subject to the following two conditions:  
(1) this device may not cause harmful interference, and  
(2) this device must accept any interference received, including interference that may cause undesired operation.

#### Caution!

Any changes or modifications not expressly approved by the party responsible for compliance could void the user's authority to operate the equipment.