

User manual

Charger specifications

Tablet specs should refer to the input voltage/current show on back cover of the product you purchase.

- Please only use the charger meets above specification.
- Please do a fully recharge per 3 months if you don't use it for long time.
- The device must be charged above 30 mins before using if it has been placed for long time.

List of product contained hazardous substances and their contents

Component name	Hazardous substances					
	(Pb)	(Hg)	(Cd)	(Cr (VI))	(PBB)	(PBDE)
Device	×	○	○	○	○	○
Digital player	○	○	○	○	○	○

The sheet is made according to SJ/T 11364.

○: Means the content of this hazardous substances is under the limitation of GB/T 26572.

×: Means the content of this hazardous substances is over the limitation of GB/T 26572.

TPD8MALLATWB



This series of products following the national standard: GB 28380-2012 of Minimum Allowable Values of Energy Efficiency and Energy Grades for Microcomputers

Guangzhou Shangke Information Technology Limited
Teclast official website: <http://www.teclast.com/en/>
Technical support: aftersales@sk1999.com
Made in China

Caution

Thank you for purchasing Teclast product. Please read this manual carefully before using the product to gain maximum benefits.

1. The new battery is only able to achieve the best performance after two to three times fully charge and discharge.
2. To prevent data loss, it is recommended to backup important personal data regularly especially before performing firmware upgrade. We are not responsible for any losses caused by data loss.
3. Please don't disassemble the device by yourself as it has high precision.
4. Please avoid strong beat and splashing water drop on device as it will cause physical damages.
5. Please avoid using the device in the following environments: high temperature, low temperature, humid, dusty, powerful magnetic field and long-term exposure under sunlight.

<http://www.teclast.com>

1

6. Please only use the battery, charger and accessories which safety is approved by manufacturer. It will be violate the warranty regulations or may be dangerous if you use any other unqualified accessories.

Tips

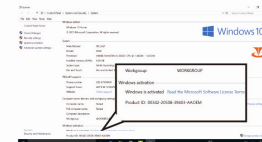
- ◆ Please note the nominal battery duration refers to the longest time can be achieved with minimum power consumption. The real time power duration might be varied in different usage scenario.
- ◆ Volume calculation:
1. The volume calculation is different between hardware manufacturer (1MB=1000KB) and operating system (1MB=1024KB).
- 2. Windows system occupies some of the disk space.
- ◆ The nominal battery capacity is count calculating the actual charge amount during charging and discharging, deviation exist by using third-party tools to detect the battery capacity.

First boot up guide

Boot up guide will help you to select system language, time zone, WiFi network, user name and device information during first boot up.



Windows can be activated automatically by connecting to internet



<http://www.teclast.com>

2

Button functions

● Power button:

- When device is off, keep pressing power button for 3 secs to turn on the device.
- When device is on, short press power button to turn on/off screen.
- When device is on, keep pressing power button for 3 secs to access to power off interface, keep pressing for 10 secs to forcibly power off the device.

Status bar

- Battery power display, click to set the screen brightness and switch power save mode, system takes control of screen brightness in power save mode.
- Wi-Fi signal strength, click to set Wi-Fi connection and switch on/off flight mode.
- System turns off Wi-Fi connection in flight mode.
- Volume status indicator, click to control the speaker volume.

Virtual button bar

- Press to directly go back to main screen.
- Press to go back to previous screen.
- Press to perform local & internet search.
- Press to switch or close all the background apps.
- Press to access to "standby", "power off" and "reboot" functions.
- Press to browse and open all installed apps.
- Press to change account settings and view the regular use apps.

<http://www.teclast.com>

3

Action center

- Press to turn on/off tablet mode.
- Press to search and connect to wireless display.
- Press to open all settings.
- Press to turn on/off Bluetooth.
- Press to turn on/off GPS.
- Press to access to VPN settings.
- Press to open OneNote (need to login Microsoft account).
- Press to turn on/off battery saver mode.
- Press to adjust screen brightness.
- Press to turn on/off Wi-Fi.
- Press to turn on/off airplane mode.

Gesture control

This function is only available for the device with touch screen.

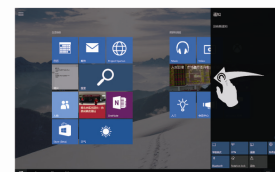
1. Use single finger to swipe from the left edge of screen to the middle can launch the background application list.



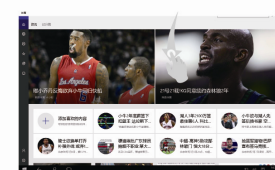
<http://www.teclast.com>

4

2. Use single finger to swipe from the right edge of screen to the middle can launch the action center.



3. Swipe down from the top of screen to open app close bar on application screen.



Factory reset

User can perform factory reset if the system performs unstable or system files are damaged, you can access to this function by following:

1. Open all settings—choose "Update & security".
2. Choose "Recovery" — "Reset the PC".
3. Choose "Remove everything" if you want to fully format the device.
4. Click "Reset" to take action.

Caution: Please connect device to charger before performing factory reset

<http://www.teclast.com>

5

FCC Warning

This device complies with Part 15 of the FCC Rules. Operation is subject to the following two conditions:

(1) This device may not cause harmful interference, and (2) this device must accept any interference received, including interference that may cause undesired operation.

NOTE 1: This equipment has been tested and found to comply with the limits for a Class B digital device, pursuant to part 15 of the FCC Rules. These limits are designed to provide reasonable protection against harmful interference in a residential installation. This equipment generates, uses and can radiate radio frequency energy and, if not installed and used in accordance with the instructions, may cause harmful interference to radio communications. However, there is no guarantee that interference will not occur in a particular installation. If this equipment does cause harmful interference to radio or television reception, which can be determined by turning the equipment off and on, the user is encouraged to try to correct the interference by one or more of the following measures:

- Reorient or relocate the receiving antenna.
- Increase the separation between the equipment and receiver.
- Connect the equipment into an outlet on a circuit different from that to which the receiver is connected.
- Consult the dealer or an experienced radio/TV technician for help.

NOTE 2: Any changes or modifications to this unit not expressly approved by the party responsible for compliance could void the user's authority to operate the equipment.

NOTE 3: This device could automatically discontinue transmission in case of absence of information to transmit, or operational failure. Note that this is not intended to prohibit transmission of control or signaling information or the use of repetitive codes where required by the technology.