

aiwa

WIRELESS LIGHT-UP KARAOKE SPEAKER

With Two Microphones

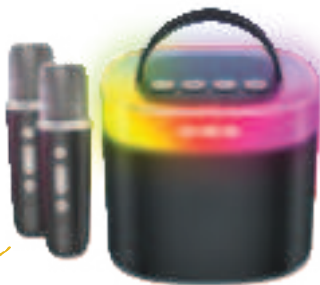
3
HOURS
Playtime†

6W
Sound Output


Multi-Color
Lighting


5 Fun
Voice Modes


Two Mics
Included



Bluetooth®

User's Manual
Item: AI6029

SAFETY PRECAUTIONS

When using your Aiwa Light-Up Wireless Karaoke Speaker with Two Microphones, basic safety precautions should always be followed including:

1. READ ALL INSTRUCTIONS BEFORE USING YOUR SPEAKER AND MICROPHONE.
2. Do not submerge the speaker and microphone in water. Do not place the speaker and microphone on wet surfaces.
3. Only clean using a clean, soft cloth.
4. Products may contain small pieces that can be a choking hazard. Parental supervision is advised.
5. Do not expose the speaker and microphone to excessive heat or fire.
6. Do not expose the speaker and microphone to extreme cold or hot temperatures to avoid battery damage.
7. Do not attempt to repair the speaker and microphone yourself. Contact a qualified service center if the product is in need of service.
8. Do not drop, crush, or expose the speaker and microphone to excessive physical force.
9. Do not charge while the speaker and microphone are in contact with water, as electric shock may occur.
10. Unplug charging cable when not in use or during thunderstorms.
11. Do not play music while the speaker and microphone are charging.
12. Do not point the microphone toward the speaker while turned ON.
13. Please recycle or dispose of your device properly based on the laws and rules of your municipality. Contact local recycling facilities and/or the manufacturer of your device for further information.

BATTERY WARNING:



CAUTION

- The device is equipped with an integrated lithium ion battery. The battery cannot be replaced. Do not attempt to remove the battery from the device.
- Do not dispose of in fire or expose to excessive heat.
- Do not crush, puncture, incinerate, or short circuit external contacts.
- Please recycle or dispose of the battery properly. Contact your local recycling facilities and/or the manufacturer for further information.

INTRODUCTION

Thank you for purchasing the Aiwa Light-Up Wireless Karaoke Speaker with Two Microphones, item AI6029. Please read this manual before using your Karaoke Speaker and Microphones.

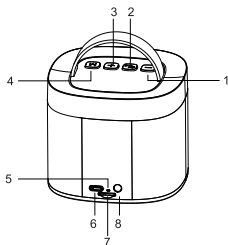
FEATURES

- Built-in handle to take your karaoke party wherever you go.
- Up to 3 hours total playtime
- Different voice modes
- Multi-color LED lights color your party

CONTENTS

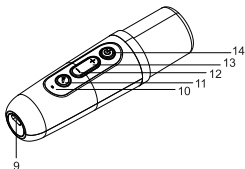
- Karaoke Speaker
- Wireless Mic x 2
- USB Charging Cable
- User's Manual with warranty Information

A QUICK LOOK



SPEAKER

- 1. Volume Down Button
- 2. Power Button
- 3. Volume Up Button
- 4. Mode Button
- 5. LED Indicator
- 6. USB-C Charging Input
- 7. microSD Port
- 8. Aux-in Port



MICROPHONE

- 9. USB-C Charging Input
- 10. LED Indicator
- 11. Voice Change Button
- 12. Volume Down Button
- 13. Volume Up Button
- 14. Power Button

NOTE: The speaker can be used on its own, but the microphone must be used while the speaker is ON.

CHARGING THE SPEAKER AND MICROPHONE

-To charge the microphone or speaker, attach the small end of the USB-C charging cable (included) to the unit's charging port.

-Attach the other end to a USB power port on a USB charging adapter.

The charging LED indicator lights emit a RED light while charging. Once charging is complete, the indicator lights turn OFF.

NOTE: The speaker will make a sound when the battery is low.

CAUTION: Do not play music while the units are charging.

PAIRING THE SPEAKER

-Press and hold the speaker's power button to pair your device. While ON and without an inserted microSD card, the speaker's LED indicator will flash blue as it enters pairing mode.

-Open your smartphone's Bluetooth menu to enable Bluetooth and search for Bluetooth devices. Select "AIWA AI6029" from the list of devices.



-After successfully pairing, the speaker's LED indicator will illuminate a steady blue.

-Press and hold the microphone's power button to power on the microphone. The microphone will automatically pair with the speaker while both devices are on. When successfully paired the microphone's LED Indicator will shine blue.

Notes:

-If a previously paired device is in range while the speaker is ON, the speaker will connect automatically.

-Keep the Bluetooth device at a close distance to the speaker (10 meters max).

USING THE SPEAKER AND MICROPHONE

Speaker's Power Button

- Press and hold to turn ON/OFF.
- Press to play/pause the current track.

Speaker's Volume Down Button

- Press and hold to play the previous track.
- Press to decrease the speaker's volume.

Speaker's Volume Up Button

- Press and hold to play the next track.
- Press to increase the speaker's volume.

Speaker's Mode Button

- Press to change the current mode. Modes available include BT, AUX IN, and microSD.
- Press and hold to turn on/off the light-up light.
- Press twice to change the current light-up light mode.

Microphone's Power Button

- Press and hold to turn ON/OFF. The microphone will automatically connect to the speaker when both devices are powered ON
- Press to cycle through volume-adjusting mode, reverberation volume-adjusting mode, and accompaniment music volume-adjusting mode. When in your desired mode, press the microphone's volume up and down buttons to adjust the volume of the selected mode.

Microphone's Volume Down Button

- Press to decrease the microphone's volume.

Microphone's Volume Up Button

- Press to increase the microphone's volume.

Microphone's Voice Change Button

- Press to cycle through the microphone's voice changing modes.
- Press twice to turn on/off vocal canceling mode.
- Press and hold to turn ON/OFF the microphone's sound.

USING THE AUX-IN PORT & MEMORY CARD SLOT

Your speaker has a TF/Micro SD Memory Card Slot and an AUX-IN port.

- Use a 3.5mm AUX cord (not included) and insert one end into the speaker and the other end into a music source device such as a computer or phone.

- When a TF or Micro SD memory card is inserted into the TF Card Slot, your speaker will play any .MP3 music file stored on the card.

SPECIFICATIONS

Speaker

- Memory Card Support: MAX 32GB
- Power Output: 2*3W
- Battery Capacity: DC 3.7V/1200mAh
- Power Input: 5V-1A MAX
- Charging Cable: USB-C
- Frequency: 2402-2480MHz
- Degree of Distortion: 1-8%
- Power Supply: Built-in Li-battery
- Bluetooth Version: V5.4
- Bluetooth Distance: 10 meters

Microphone

- Battery Capacity: DC 3.7V/400mAh
- Power Input: DV 5V-1A MAX
- Charging Cable: USB-C
- Voice Channel Response: 50Hz-13KHz
- Power Supply: Built-in Li-battery
- Connection: 2.4G wireless

FCC STATEMENT

Changes or modifications not expressly approved by the party responsible for compliance could void the user's authority to operate the equipment.

This device complies with Part 15 of the FCC Rules. Operation is subject to the following two conditions: (1) this device may not cause harmful interference, and (2) this device must accept any interference received, including interference that may cause undesired operation.

This equipment has been tested and found to comply with the limits for a Class B digital device, pursuant to Part 15 of the FCC Rules. These limits are designed to provide reasonable protection against harmful interference in a residential installation. This equipment generates, uses and can radiate radio frequency energy and, if not installed and used in accordance with the instructions, may cause harmful interference to radio communications. However, there is no guarantee that interference will not occur in a particular installation. If this equipment does cause harmful interference to radio or television reception, which can be determined by turning the equipment off and on, the user is encouraged to try to correct the interference by one or more of the following measures:

- Reorient or relocate the receiving antenna.
- Increase the separation between the equipment and receiver.
- Connect the equipment into an outlet on a circuit different from that to which the receiver is connected.
- Consult the dealer or an experienced radio/TV technician for help.

WARRANTY

This warranty covers the original consumer purchaser only and is not transferable.

This warranty covers products that fail to function properly UNDER NORMAL USAGE, due to defects in material or workmanship. Your product will be repaired or replaced at no charge for parts or labor for a period of one year.

What Is Not Covered By Warranty

Damages or malfunctions not resulting from defects in material or workmanship and damages or malfunctions from other than normal use, including, but not limited to, repair by unauthorized parties, tampering, modification or accident.

To Obtain Warranty Service and Troubleshooting Information:
Call 1-800-592-9541 or visit our website at www.aiwa.us.com

To receive Warranty service along with the name and address of an authorized product service center, the original consumer purchaser must contact us for problem determination and service procedures. Proof of purchase in the form of a bill of sale or receipted invoice, evidencing that the product is within the applicable Warranty period(s), MUST be presented in order to obtain the requested service. It is your responsibility to properly package and send any defective products along with a dated copy of proof of purchase, a written explanation of the problem, and a valid return address of the authorized service center at your expense. Do not include any other items or accessories with the defective product. Any products received by the authorized service center that are not covered by warranty will be returned unrepaired.



CONTACT US

1-800-592-9541

www.aiwa.us.com

AIWA

Edison, NJ 08817

© 2025 Aiwa Acquisitions LLC. All rights reserved. AIWA and associated marks are owned by Aiwa Acquisitions and used under license.

Keep all relevant information for future reference.

The Bluetooth® word mark and logos are registered trademarks owned by the Bluetooth SIG, Inc. and any use of such marks by Sakar International is under license. Other trademarks and trade names are those of their respective owners.